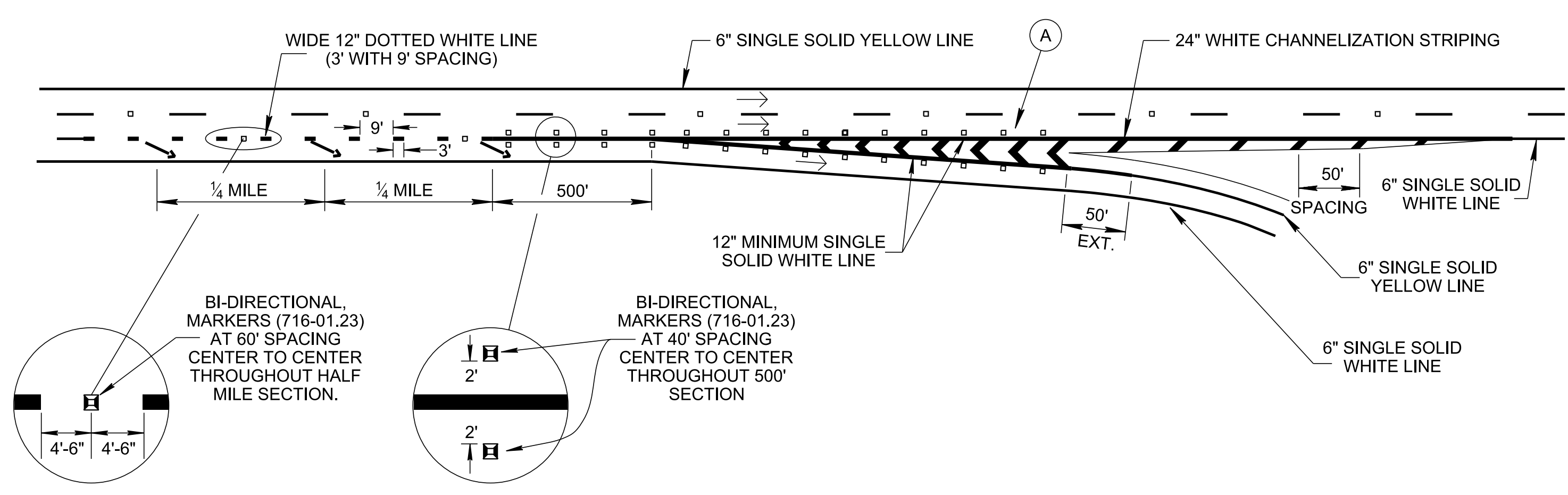
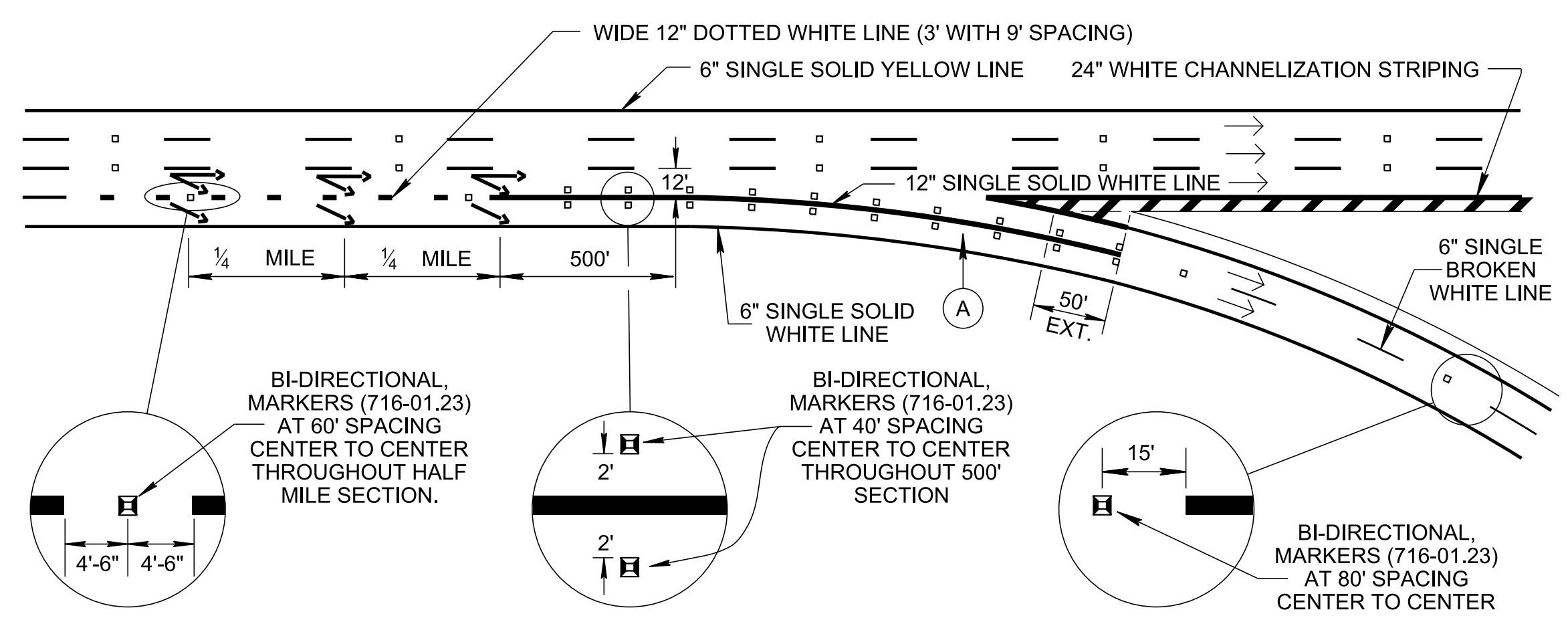


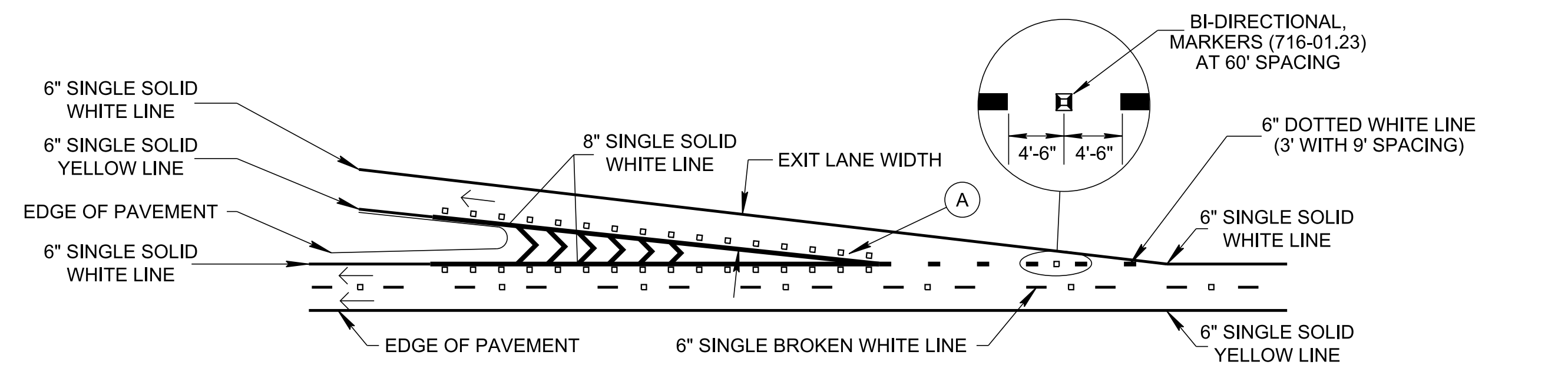
3/16/2023 2:54:26 PM P:\StandDraw\DESIGN STANDARDS\Standards Drawings\Standard Roadway Drawings - CURRENT\In Progress\10-107.00 Design - Traffic Control IP\170.01 Pavements Markings IP\T-M-20230301.DGN



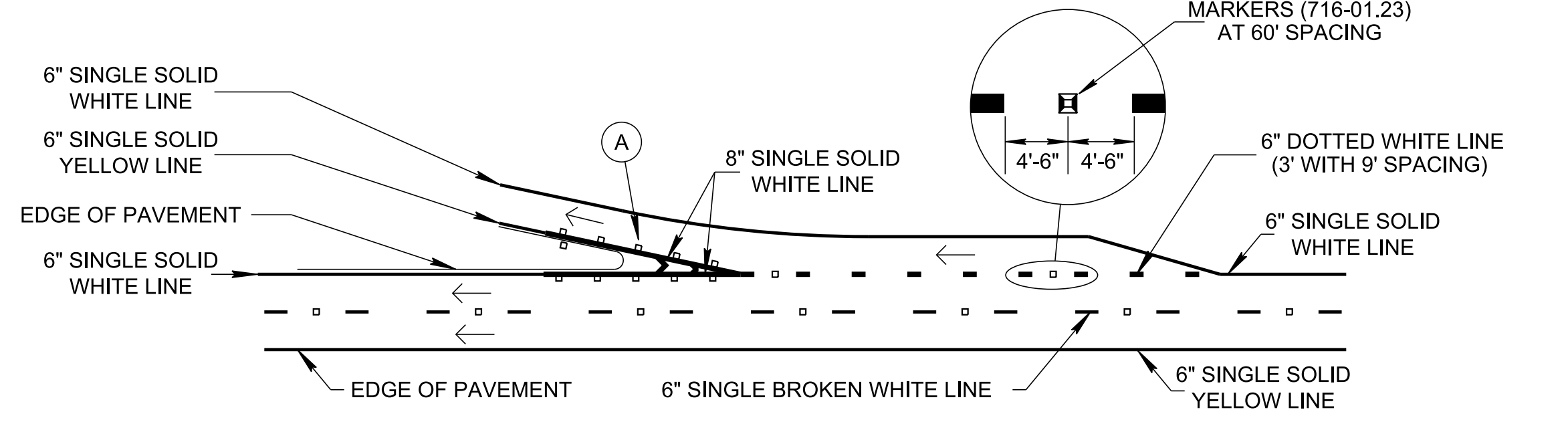
**EXIT ONLY LANE**



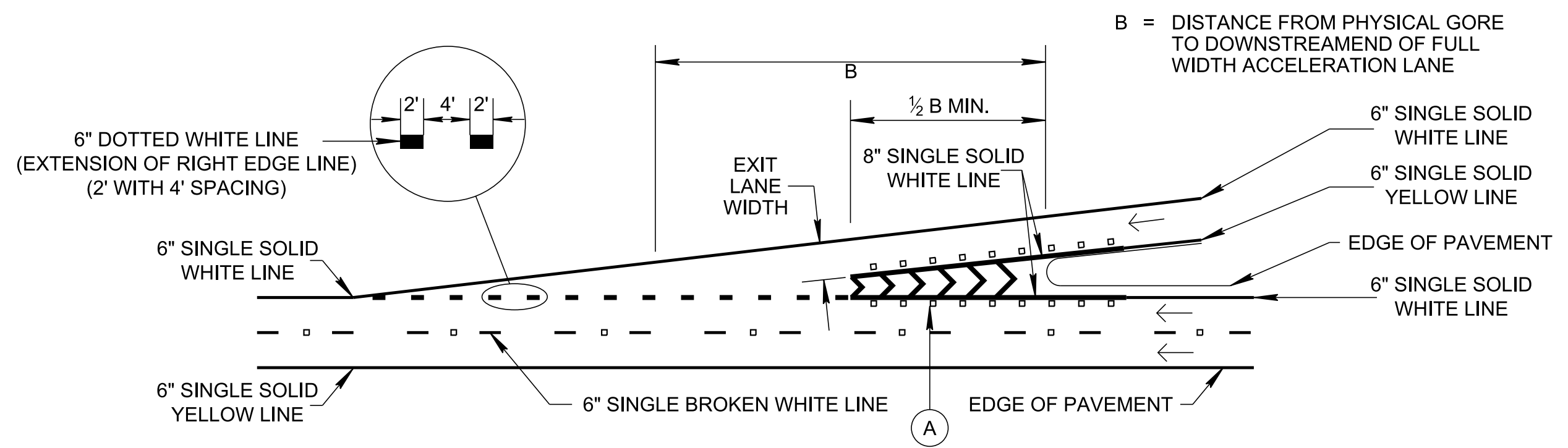
**EXIT ONLY LANE WITH OPTIONAL LANE**



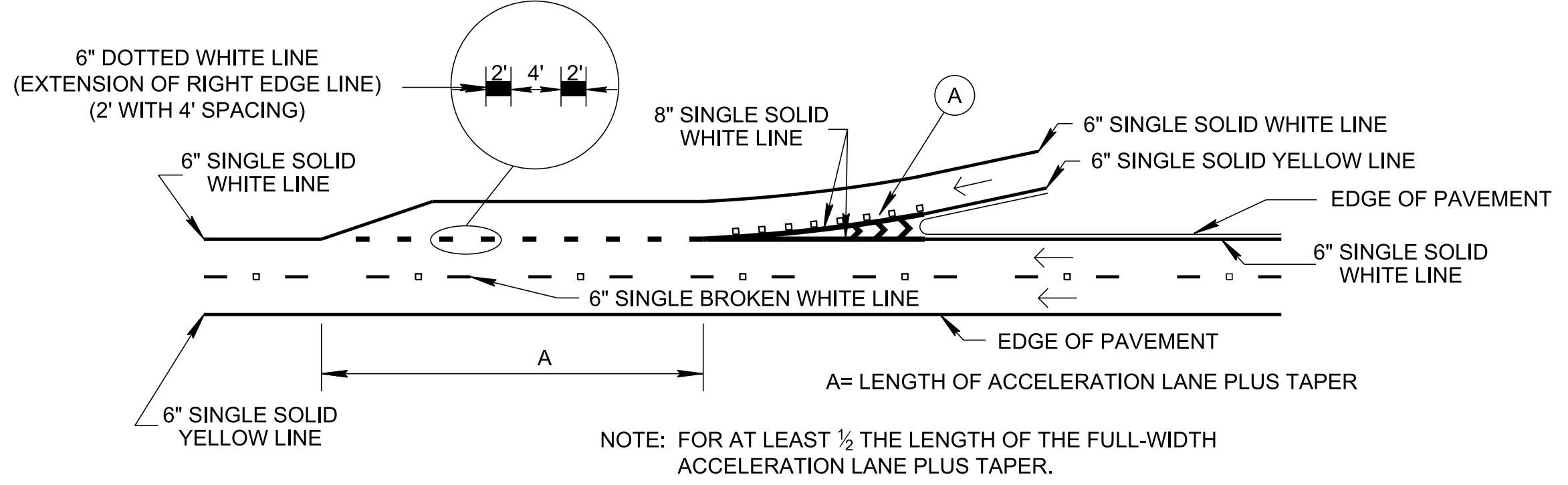
**TAPERED DECELERATION LANE EXIT RAMP**



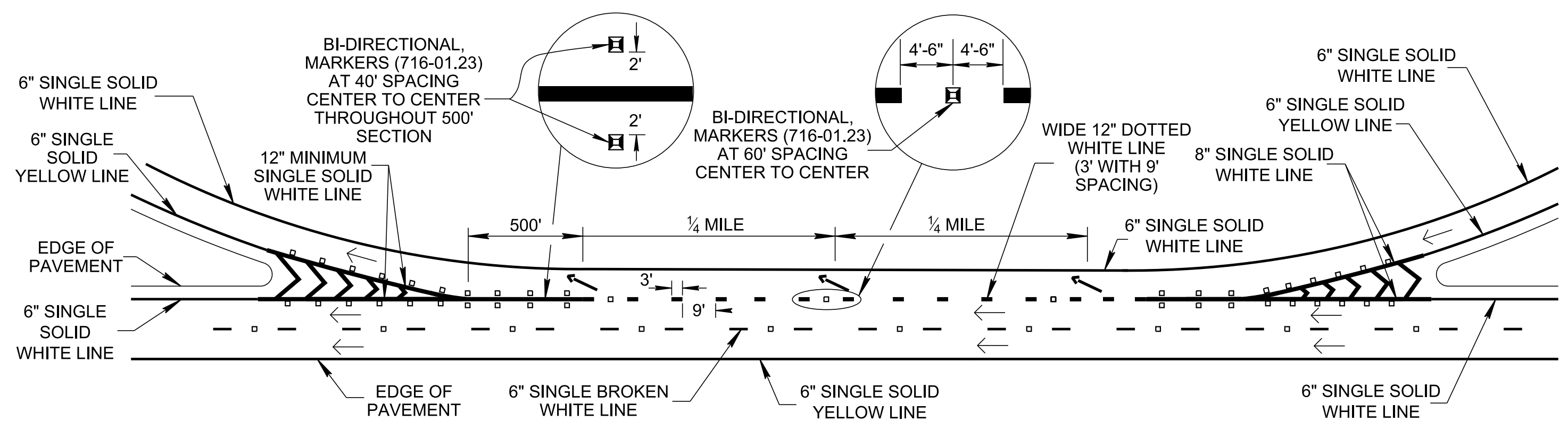
**PARALLEL DECELERATION LANE**



**TAPERED ACCELERATION LANE ENTRANCE RAMP**

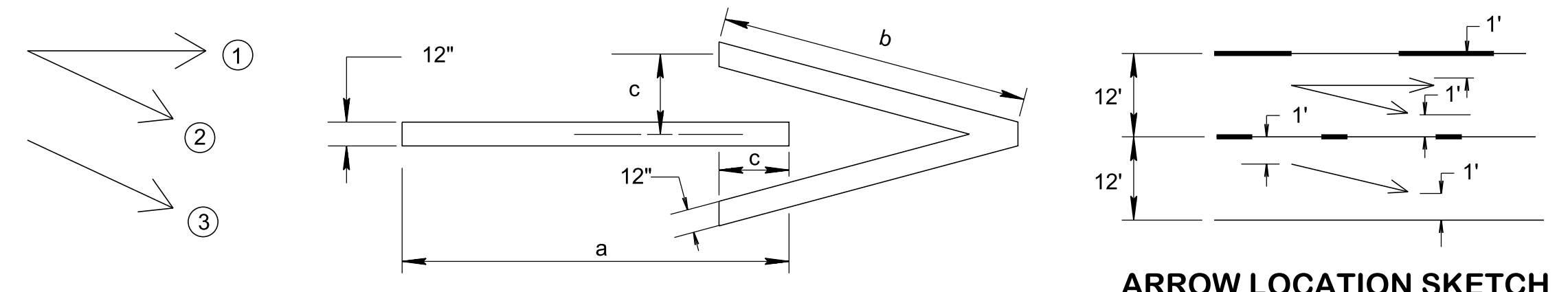


**PARALLEL ACCELERATION LANE**



**AUXILIARY LANE AT CLOSELY SPACED RAMP**

NOTE: USE THIS DETAIL WHERE DISTANCE FROM THEORETICAL GORE OF ENTRANCE RAMP TO THEORETICAL GORE OF EXIT RAMP IS LESS THAN OR EQUAL TO 1/4 MILE.



**ARROW LOCATION SKETCH**

| DIMENSIONS |        |        |       |
|------------|--------|--------|-------|
| ARROW      | a      | b      | c     |
| ①          | 14'-0" | 8'-6"  | 2'-2" |
| ②          | 10'-4" | 8'-6"  | 2'-2" |
| ③          | 16'-6" | 10'-0" | 2'-6" |

**DETAILS FOR EXIT PAVEMENT ARROWS AT 1/4 MILE SPACING**

PAY ITEM NOS.:  
 716-04.01, PLASTIC PAVEMENT MARKING (STRAIGHT-TURN ARROW), EACH EACH  
 716-04.05, PLASTIC PAVEMENT MARKING (STRAIGHT ARROW), EACH EACH  
 716-04.07, PLASTIC PAVEMENT MARKING (EXIT ONLY ARROW), EACH EACH

**LEGEND**  
 ← TRAFFIC FLOW ARROW  
 ↘ PLASTIC PAVEMENT MARKING ARROW

**FOOTNOTE**  
 (A) SEE STANDARD DRAWING NO. T-M-7 FOR GORE MARKING DETAILS.

- REV. 2-22-82: ADDED DETAIL FOR "EXIT ONLY" AND FOR PARALLEL ACCELERATION LANE MARKING. CHANGED SHEET TITLE AND DWG. NO. FROM T-M-3 TO T-M-6. ADDED NOTES. ADDED DETAILS FOR TWO LANE EXIT AND PAVEMENT ARROWS. ADDED DOTTED LINES AT EXIT RAMP.
- REV. 10-30-90: REDREW AND REORGANIZED SHEET, CHANGED WIDTH OF EXIT PAVEMENT ARROWS TO 12".
- REV. 03-29-91: ADDED MONO-DIRECTIONAL PAVEMENT MARKERS (CLEAR) TO EXIT ONLY LANE DETAIL AND TWO LANE EXIT WITH OPTIONAL LANE DETAIL. CHANGED GENERAL NOTES. ON REMAINDER OF SHEET CHANGED TYPE 2 PAVEMENT MARKERS (CLEAR) TO MONO-DIRECTIONAL PAVEMENT MARKERS (CLEAR).
- REV. 10-26-92: ADDED GENERAL NOTE (B).
- REV. 03-29-91: MOVED MONO-DIRECTIONAL PAVEMENT MARKERS (CLEAR) FROM INSIDE OF CHANNELIZATION MARKING TO OUTSIDE OF CHANNELIZATION MARKING.
- REV. 01-19-94: IN DETAIL FOR TWO LANE EXIT WITH OPTIONAL LANE, EXTEND RAMP AND ADD PAVEMENT MARKERS.
- REV. 07-29-98: CHANGED WIDTH OF CENTERLINES, EDGELINES AND DOTTED WHITE LANE LINES FROM 4 TO 6 INCHES. CHANGED USE OF DOTTED WHITE LANE LINES IN PARALLEL AND TAPERED ACCELERATION AND DECELERATION DETAILS.
- REV. 09-01-09: ADDED 6" BROKEN WHITE LINE TO PARALLEL ACCELERATION LANE.
- REV. 11-01-11: REVISED PAVEMENT MARKINGS FOR EXIT ONLY LANE DETAIL, EXIT ONLY WITH OPTIONAL LANE DETAIL, TAPERED ACCELERATION LANE DETAIL AND PARALLEL ACCELERATION LANE DETAIL. DELETED GENERAL NOTE (B).
- REV. 01-12-12: CHANGED SNOW PLOWABLE MARKERS FROM MONO-DIRECTIONAL TO BI-DIRECTIONAL 2-COLOR.
- REV. 05-24-12: REVISED PAVEMENT MARKINGS FOR TAPERED ENTRANCE AND EXIT AND PARALLEL ENTRANCE AND EXIT RAMP.
- REV. 06-22-12: REVISED SPACING FOR SNOW PLOWABLE MARKINGS IN EXIT ONLY DETAILS.
- REV. 01-07-19: REVISED DETAILS TAPERED ACCELERATION LANE ENTRANCE RAMP AND PARALLEL ACCELERATION LANE.
- REV. 06-28-19: REVISED SPACING FOR 6" DOTTED WHITE LINE ON DETAIL FOR TAPERED ACCELERATION LANE ENTRANCE RAMP AND PARALLEL ACCELERATION LANE. REDREW SHEET.
- REV. 06-15-21: ADDED AUXILIARY LANE AT CLOSELY SPACED RAMP DETAIL.
- REV. 03-01-23: THE FULL 3RD LANE WAS SHOWN ON THE EXIT ONLY LANE DRAWINGS.

MINOR REVISION -- FHWA APPROVAL NOT REQUIRED

STATE OF TENNESSEE  
 STANDARD DRAWING  
 DEPARTMENT OF TRANSPORTATION

**MARKING DETAIL FOR EXPRESSWAY AND FREEWAY INTERCHANGES**