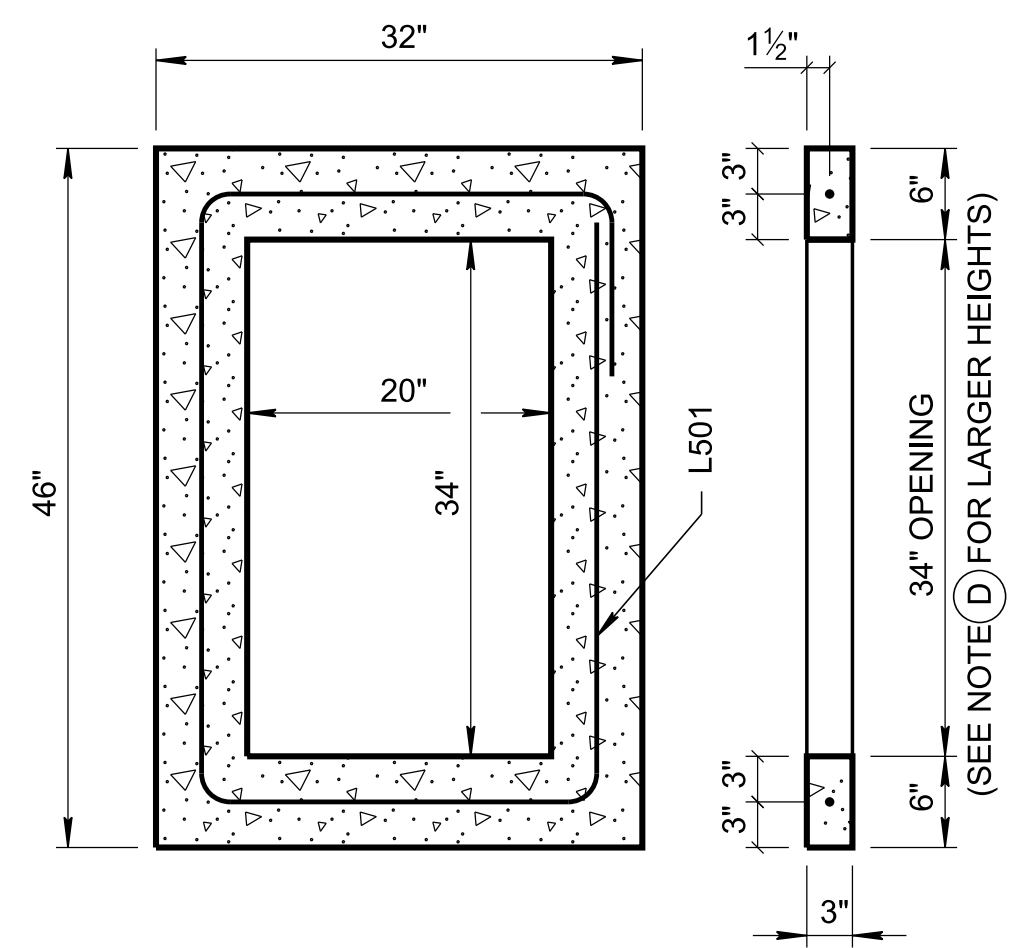
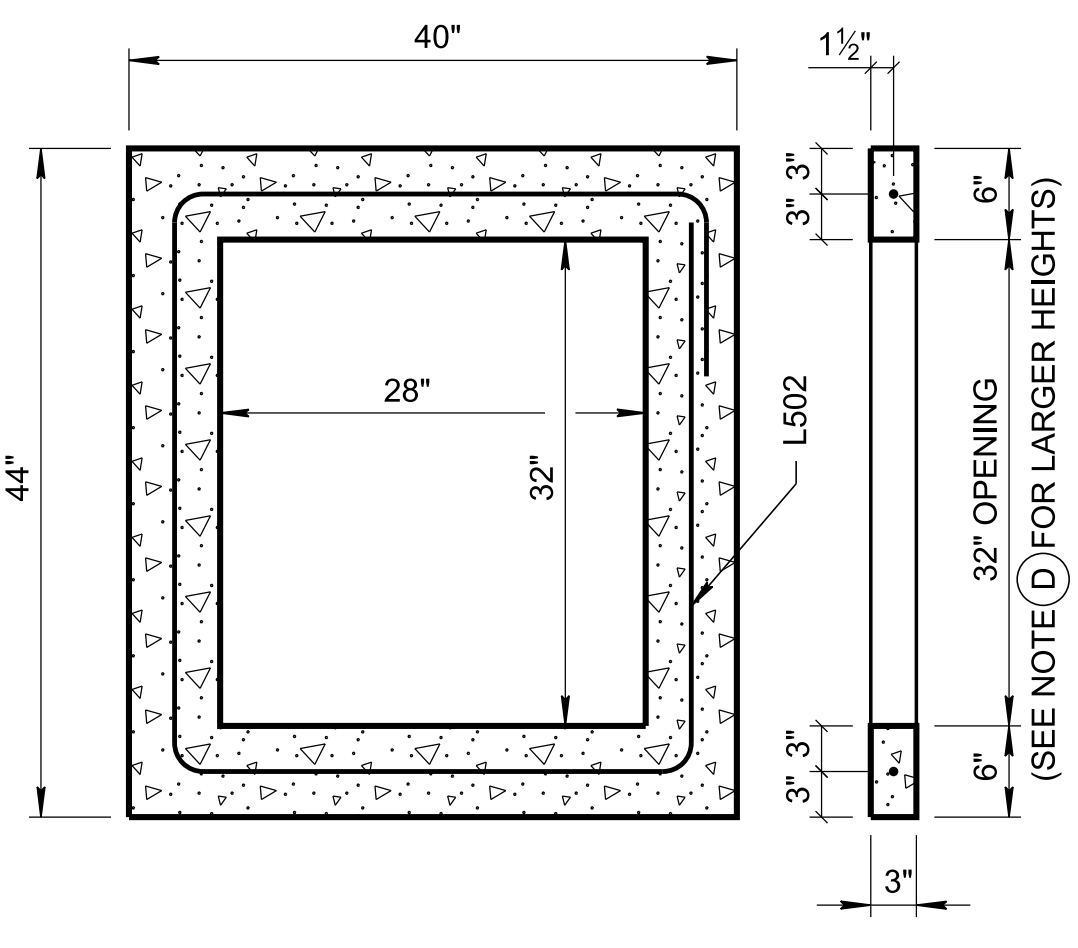


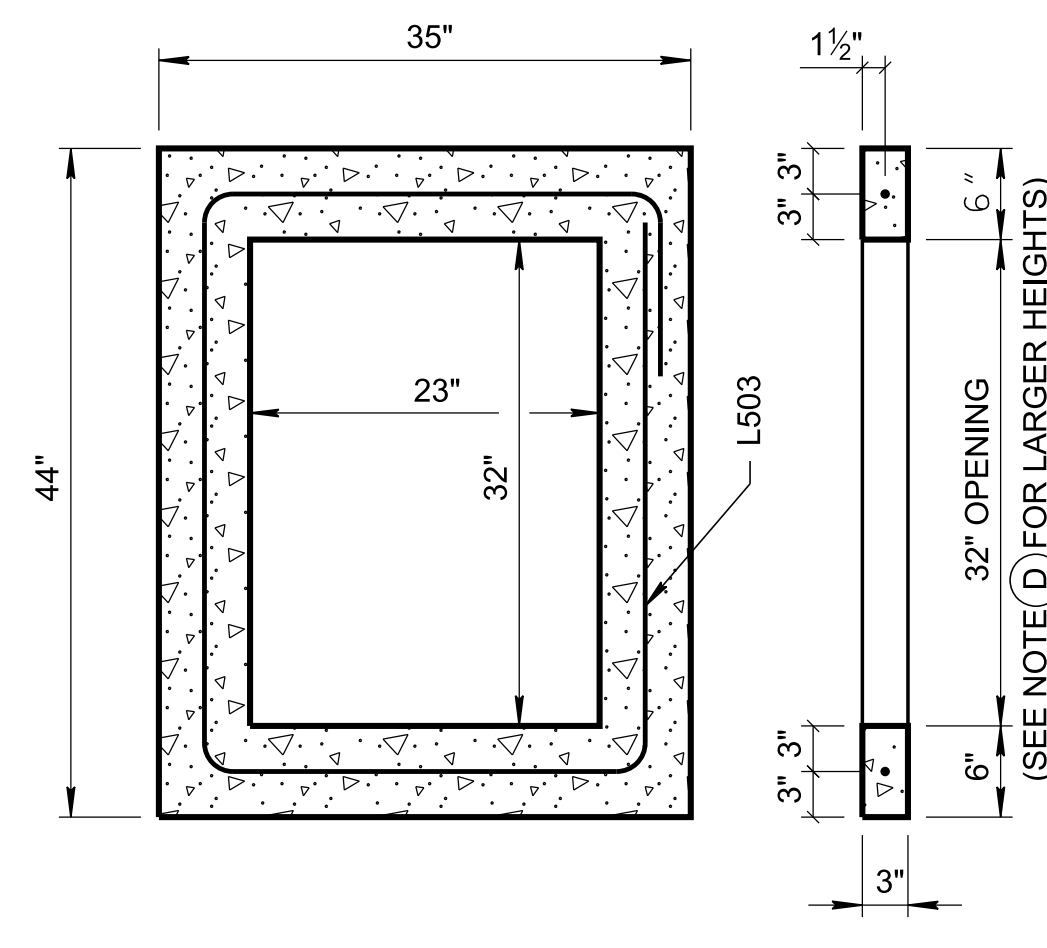
RISER A



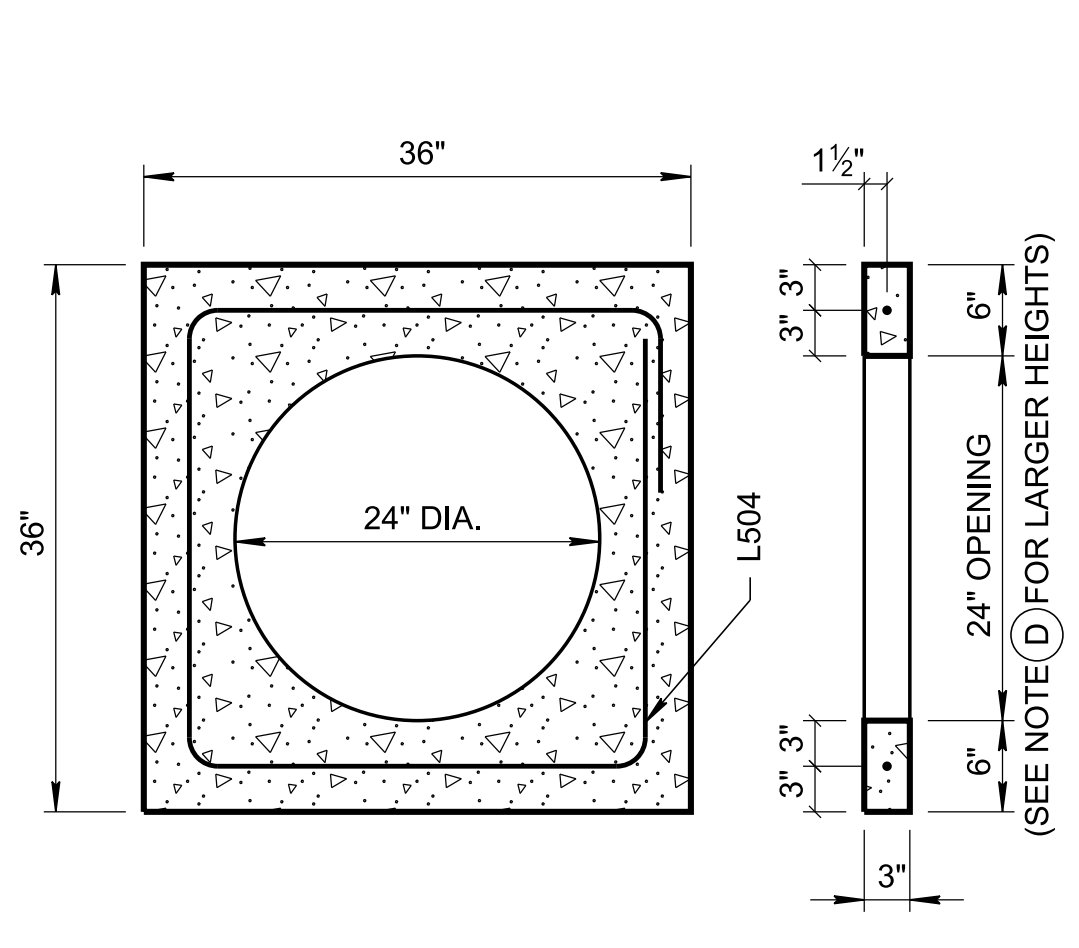
RISER B



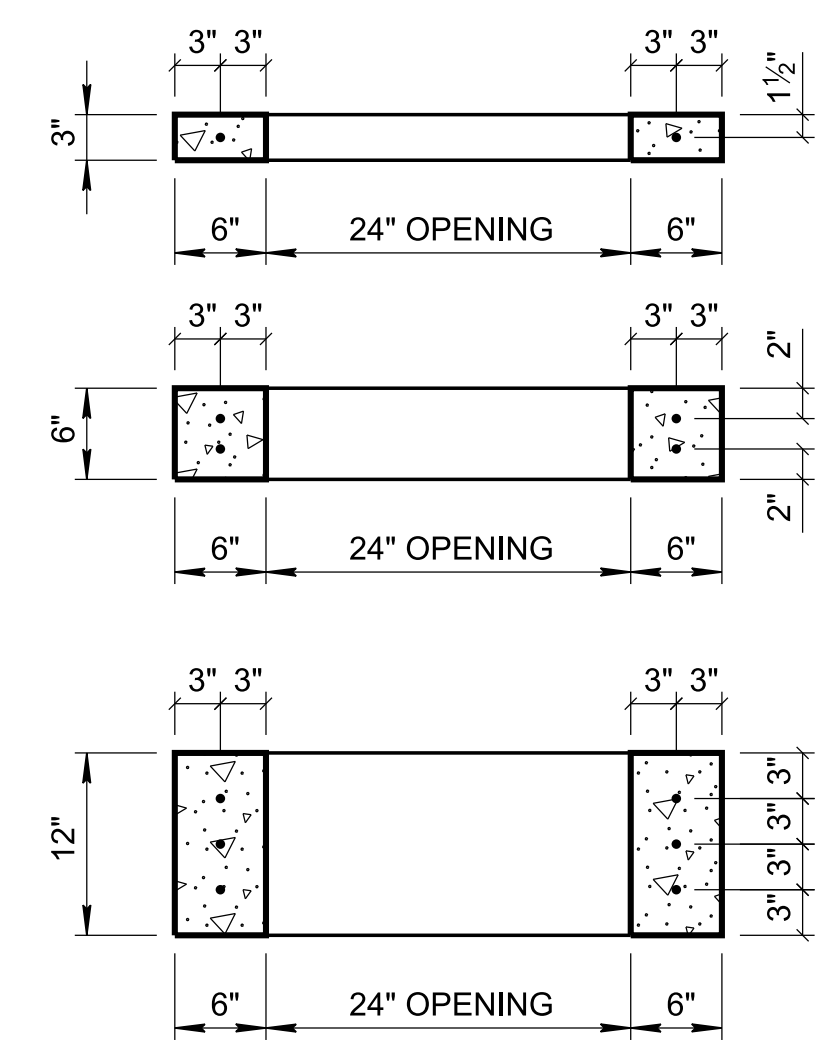
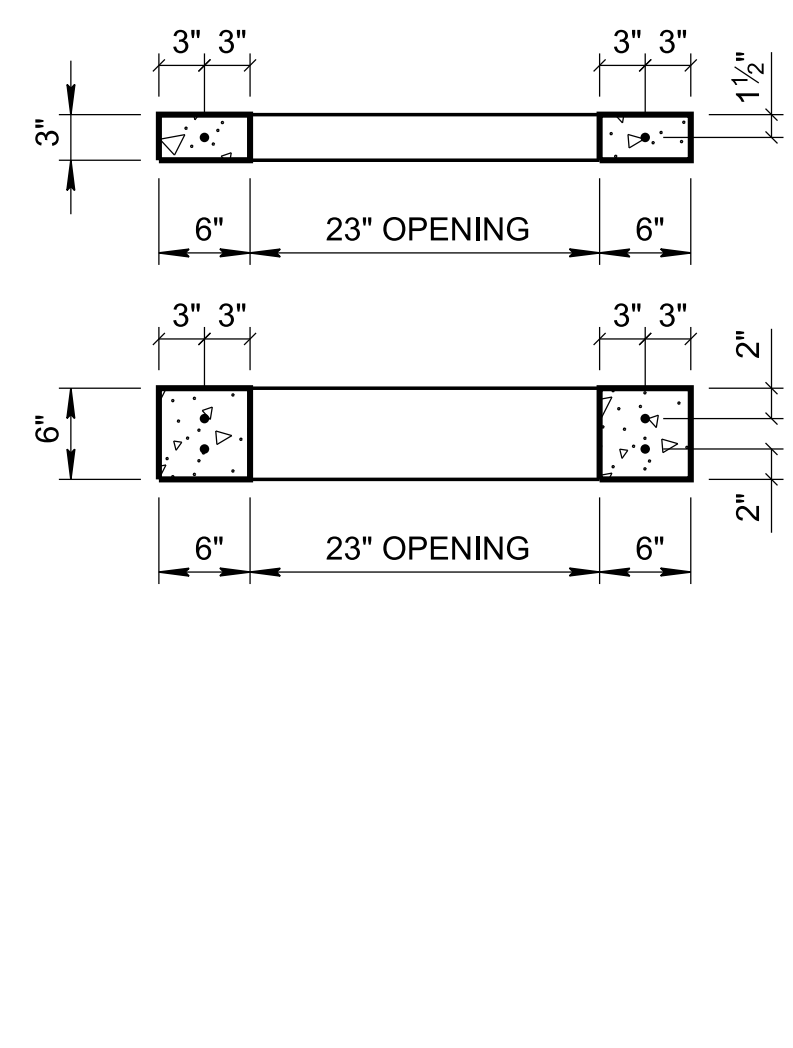
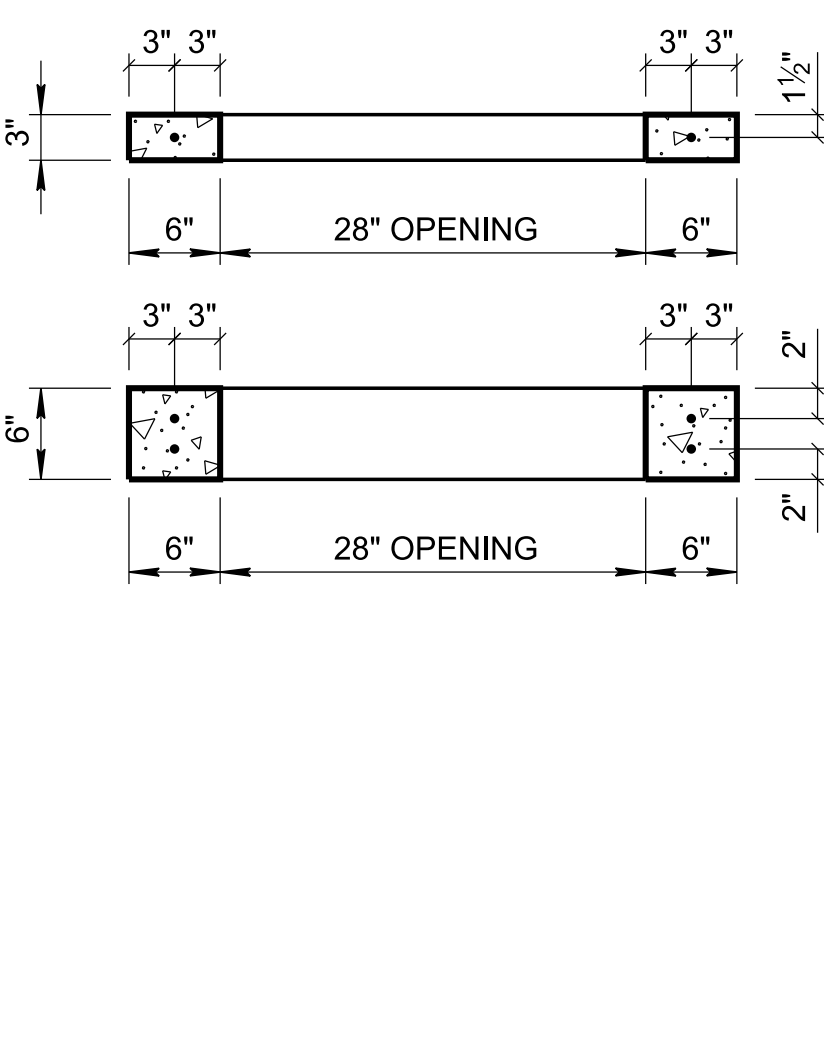
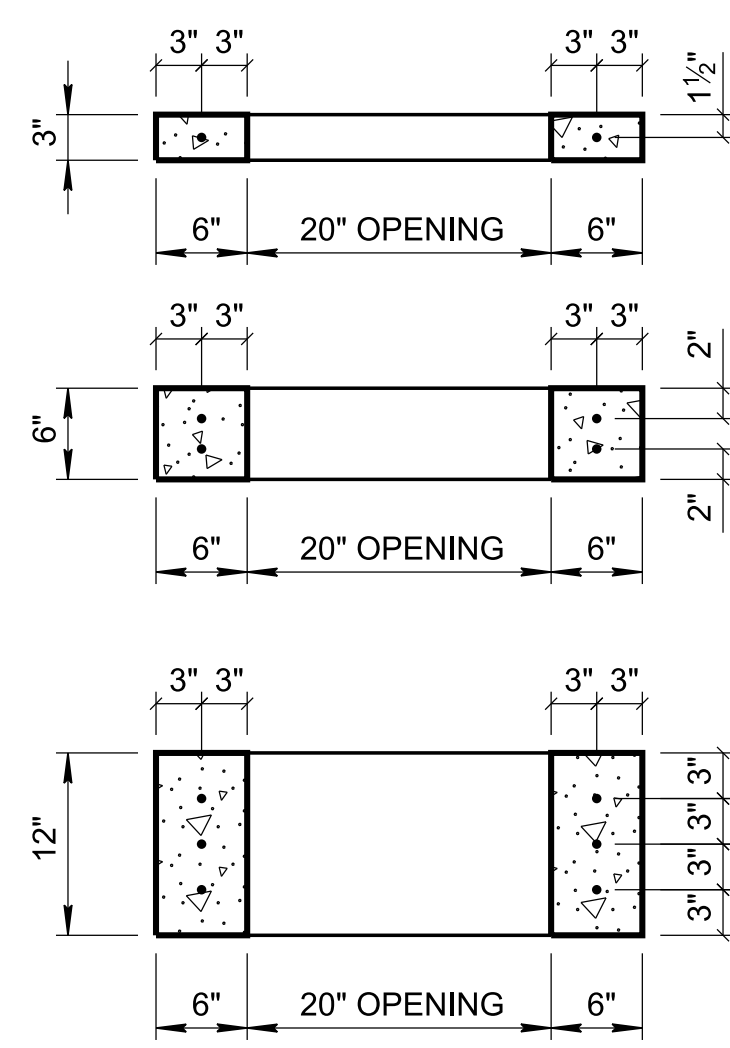
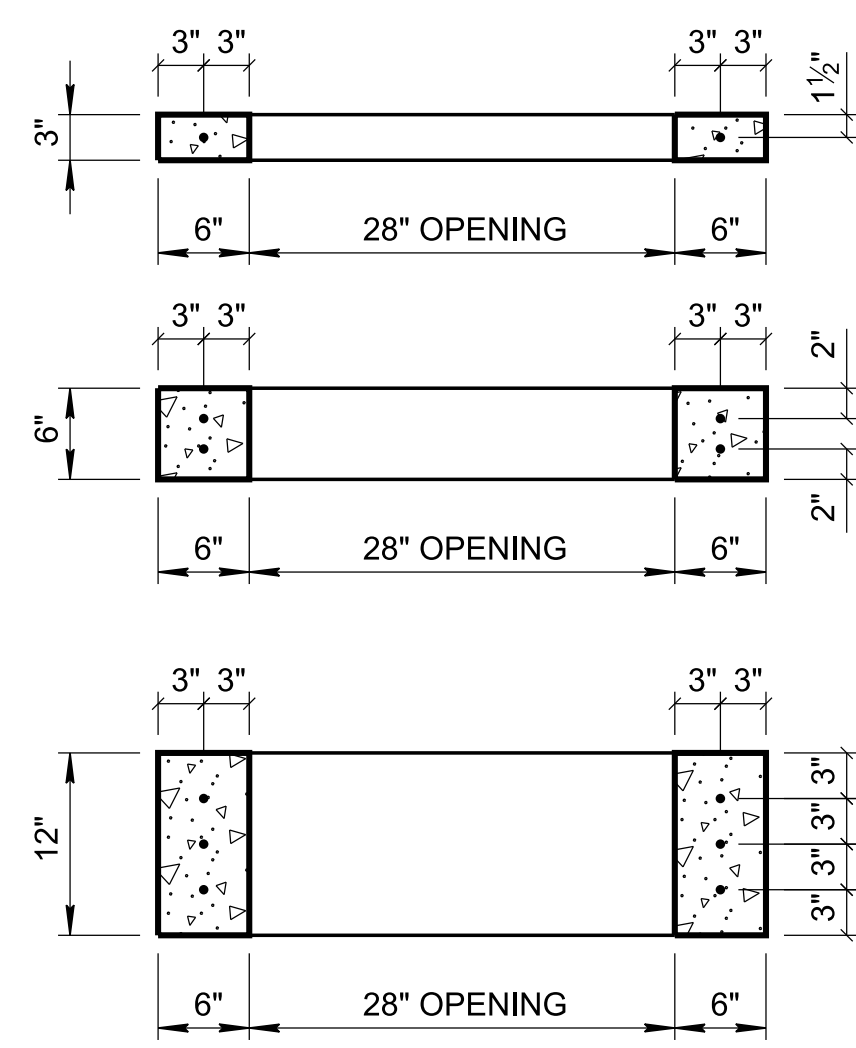
RISER C



RISER D



RISER E



RISER A MAY BE USED WITH THE FOLLOWING STANDARD DRAWINGS:

- D-CB-12P
- D-CB-12RA
- D-CB-12RB
- D-CB-12RC
- D-CB-12S
- D-CB-12SB
- D-CB-12SC
- D-CB-12SD
- D-CB-12SE
- D-CB-13P
- D-CB-13RA
- D-CB-13RB
- D-CB-13RC
- D-CB-13S
- D-CB-14P
- D-CB-14RB
- D-CB-14S
- D-CB-14SE
- D-CB-16S
- D-CB-17S
- D-CB-25P
- D-CB-25RA
- D-CB-25RB
- D-CB-25S
- D-CB-25SC
- D-CB-25SD
- D-CB-25SE
- D-CB-25SB
- D-CB-26P
- D-CB-26S
- D-CB-27S
- D-CB-31R
- D-CB-31SD
- D-CB-31SE
- D-CB-41P
- D-CB-41RB
- D-CB-41SC
- D-CB-41SE
- D-CB-41S
- D-CB-41SB
- D-CB-46SE
- D-CB-51SC
- D-CB-51SD
- D-CB-51SE
- D-CB-52SE

RISER B MAY BE USED WITH THE FOLLOWING STANDARD DRAWINGS:

- D-CB-10RA
- D-CB-10S
- D-CB-10SB

RISER C MAY BE USED WITH THE FOLLOWING STANDARD DRAWINGS:

- D-CB-12LP
- D-CB-25LP
- D-CB-41LP

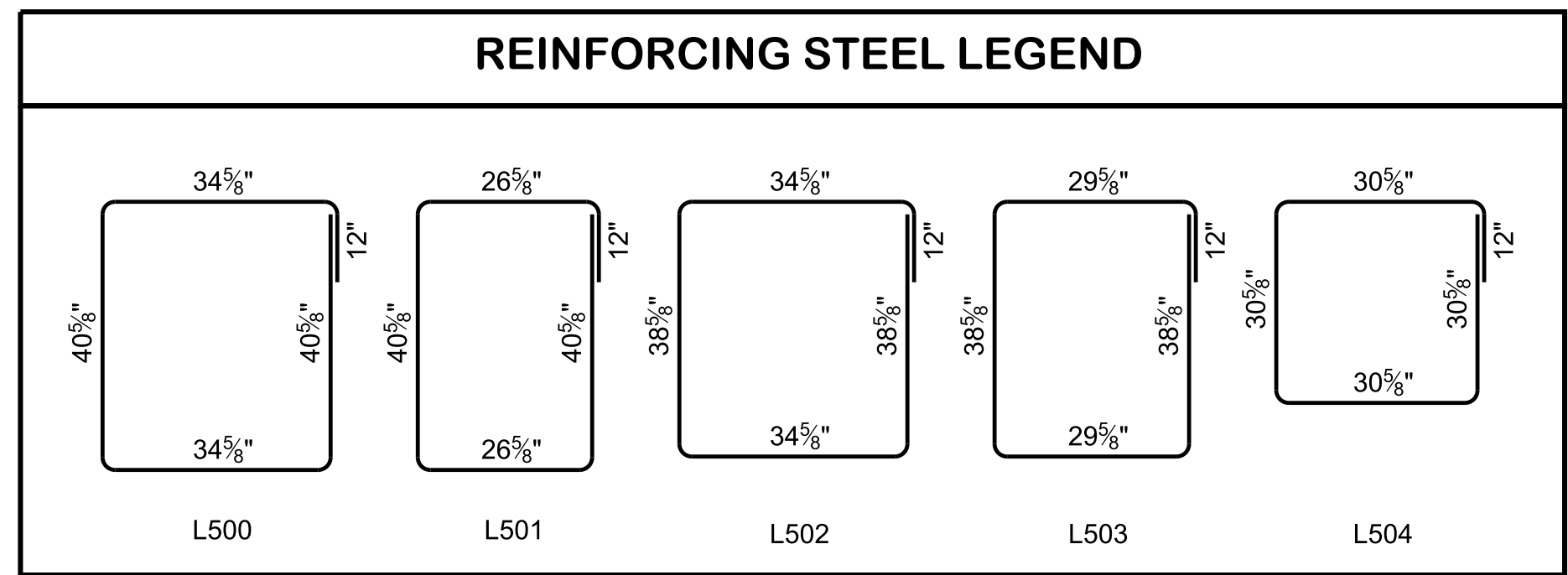
RISER D MAY BE USED WITH THE FOLLOWING STANDARD DRAWINGS:

- D-CB-10LPC

RISER E MAY BE USED WITH THE FOLLOWING STANDARD DRAWINGS:

- D-MH-5
- D-MH-6
- D-MH-7

NOTE:  
CIRCULAR RISER SECTION WITH A 24 INCH INSIDE DIAMETER AND A 30 INCH OUTSIDE DIAMETER WITH T500 DIA. 30% INCHES IS AN ACCEPTABLE ALTERNATE.



**GENERAL NOTES**

- (A) RISER FRAMES MAY BE USED TO SUBSTITUTE BRICK RISERS AS SHOWN ON STANDARD DRAWINGS. THE REQUIRED ADJUSTMENT HEIGHT MAY BE ACCOMPLISHED BY STACKING TWO RISER FRAMES. GROUT OR CONCRETE SEAL IS REQUIRED BETWEEN STACKED FRAMES.
- (B) CONCRETE:  $f'_c = 4,000$  POUNDS PER SQUARE INCH AT 28 DAYS  
REINFORCING STEEL: ASTM A615,  $F_y = 60,000$  POUNDS PER SQUARE INCH  
ALL REINFORCING IS TO BE INSTALLED AS DETAILED ON THIS DRAWING.  
MIN. 1" CONCRETE COVER SHALL BE MAINTAINED DURING MANUFACTURING.
- (C) PAYMENT OF PRECAST RISER FRAMES SHALL BE INCLUDED IN THE TOTAL COST OF STRUCTURE.
- (D) VERTICAL SPACING OF REINFORCING STEEL IS TYPICAL FOR ALL PRECAST RISER HEIGHTS.
- (E) MANHOLE STEPS SHALL BE INSTALLED AS NEEDED, AND THE COST SHALL BE INCLUDED IN THE PAYMENT OF THE PRECAST RISER. PRODUCTS LISTED ON THE DEPARTMENT'S QPL 18 WILL BE ACCEPTABLE.