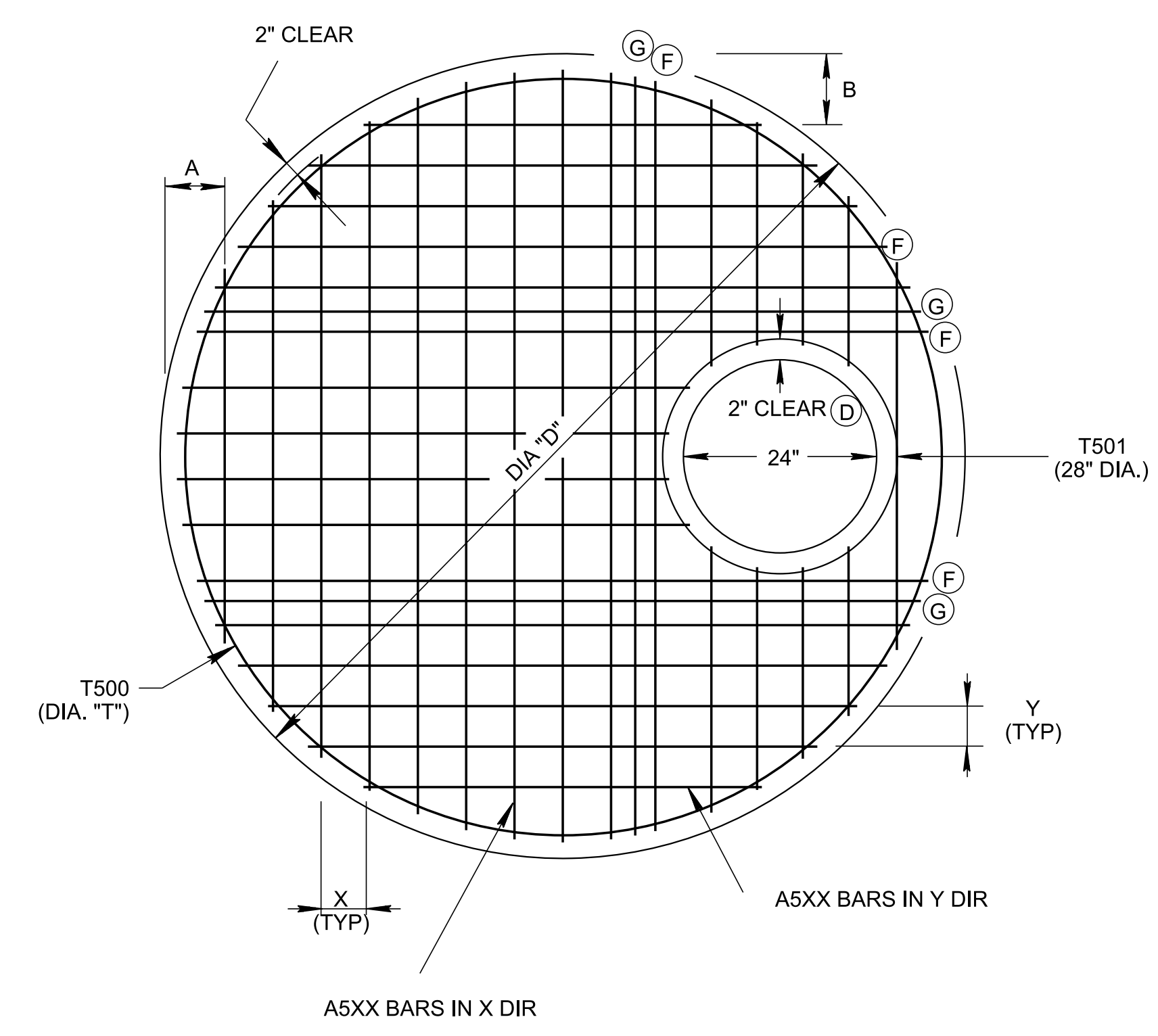


REV. 4-15-00: CHANGED LID THICKNESS FOR 96" DIAMETER.

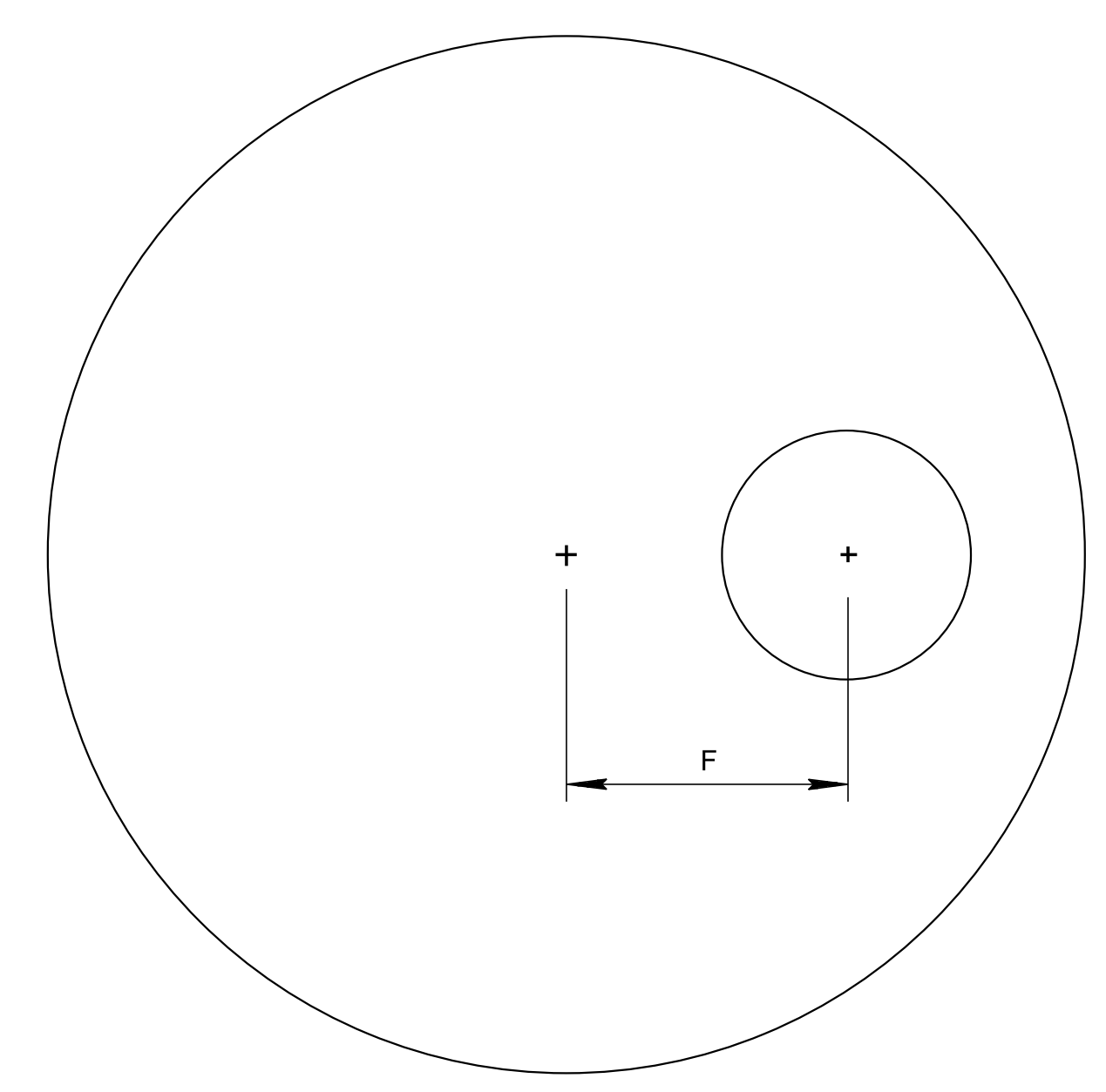
REV. 8-01-12: REVISED MANHOLE LIDS FOR COMPLIANCE WITH AASHTO LRFD BRIDGE DESIGN SPECIFICATIONS, 4TH EDITION WITH INTERIMS. REVISED REINFORCING AND ADDITIONAL MISC. DRAFTING EDITS. ADDED 48" MANHOLE LID & MOVED 96" MANHOLE LID TO STANDARD DRAWING D-MH-3A.

REV. 4-21-14: VOIDED D-MH-3A AND D-MH-3B REVISED REINFORCING DETAILS.

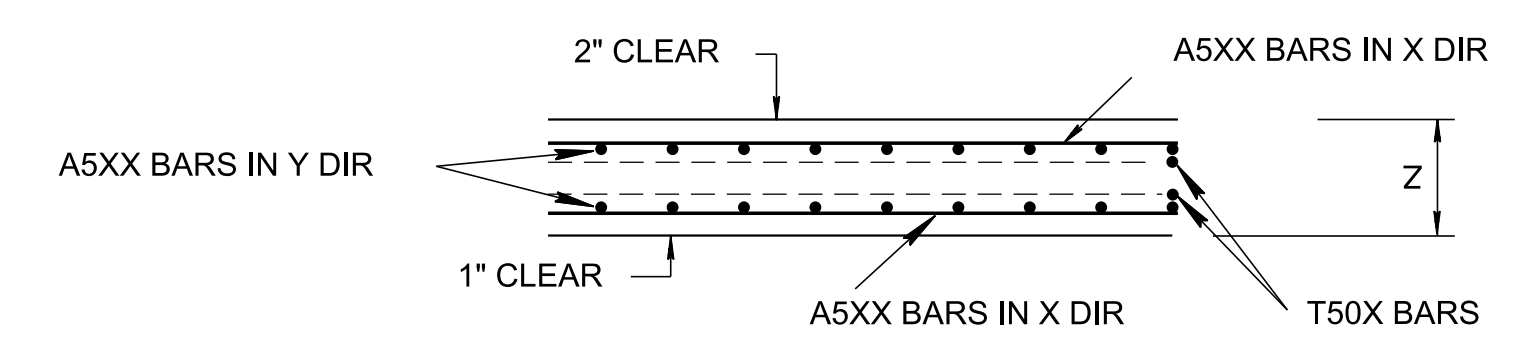
REV. 02-20-2020: REDREW SHEET.



TYPICAL REINFORCEMENT PLAN

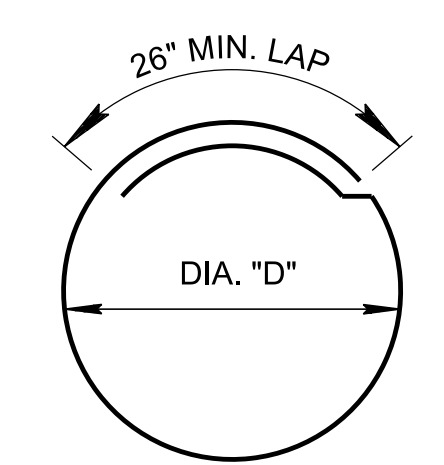


MANHOLE CUTOUT LOCATION



TYPICAL SECTION

T BAR DETAILS



LENGTH OF T BAR
 $L = \pi D + 26"$



A BARS DETAILS

MANHOLE DIMENSIONS TABLE								
MANHOLE SIZE	A (IN)	B (IN)	D (IN)	F (IN)	X (IN)	Y (IN)	Z (IN)	T (IN)
48"	6.5	5	58	9	5	6	8	51%
60"	5.75	6	72	15	5.5	6	8	65%
72"	7	8	86	21	6	6	9	79%
84"	8	8	100	27	6	6	9	93%
96"	9	9.75	114	33	6	6	10	107%
108"	7	11.5	128	39	6	6	10	121%
120"	8	10.5	142	45	6	6	10	135%

GENERAL NOTES

(A) THE FOLLOWING MATERIAL PROPERTIES ARE REQUIRED
 CONCRETE: $f'_c = 4,000$ POUNDS PER SQUARE INCH AT 28 DAYS
 REINFORCING STEEL: ASTM A615, $F_y = 60,000$ POUNDS PER SQUARE INCH
 ALL REINFORCING IS TO BE INSTALLED AS DETAILED ON THIS DRAWING.

(B) SEE D-MH-2 FOR OTHER NOTES.

(C) DETERMINATION OF THE LENGTH OF REINFORCING BARS IS THE RESPONSIBILITY OF THE MANUFACTURER BASED ON THE DIMENSIONS SHOWN ON THIS DRAWING.

(D) A BARS TO END SUCH THAT 2" CLEAR DISTANCE IS MAINTAINED AROUND THE PERIMETER OF THE LID AND AROUND THE MANHOLE CUTOUT.

(E) A BARS SHORTER THAN 9.5" MAY BE OMITTED.

(F) THE FIRST A BAR FROM THE CUTOUT HOLE SHALL BE SHIFTED TO THE 2" CLEAR IF IT WOULD OTHERWISE BE CLOSER THAN 2" TO THE CUTOUT HOLE IF THE TYPICAL SPACING WHERE FOLLOWED.

(G) ADD ONE BAR HALF WAY BETWEEN THE FIRST TWO BARS AROUND THE MANHOLE CUTOUT, THE EXTRA BAR IS NOT REQUIRED ON THE SHORT SIDE (SHOWN ON RIGHT SIDE ON THIS DRAWING).

(H) SEE D-CB-99 FOR JOINT DETAIL BETWEEN LID AND STRUCTURE.

APPROVED BY FHWA
 (ALL OTHERS APPROVED BY TDOT)

STATE OF TENNESSEE
 STANDARD DRAWING
 DEPARTMENT OF TRANSPORTATION

TYPICAL DESIGN
 OF LIDS FOR
 NO. 3 MANHOLE

3/23/2020 11:20:20 AM C:\Users\jj00547\Desktop\10-102.00 Catch Basins and Manholes IP\102.03 Manholes IP\DMH3-20200220.DGN