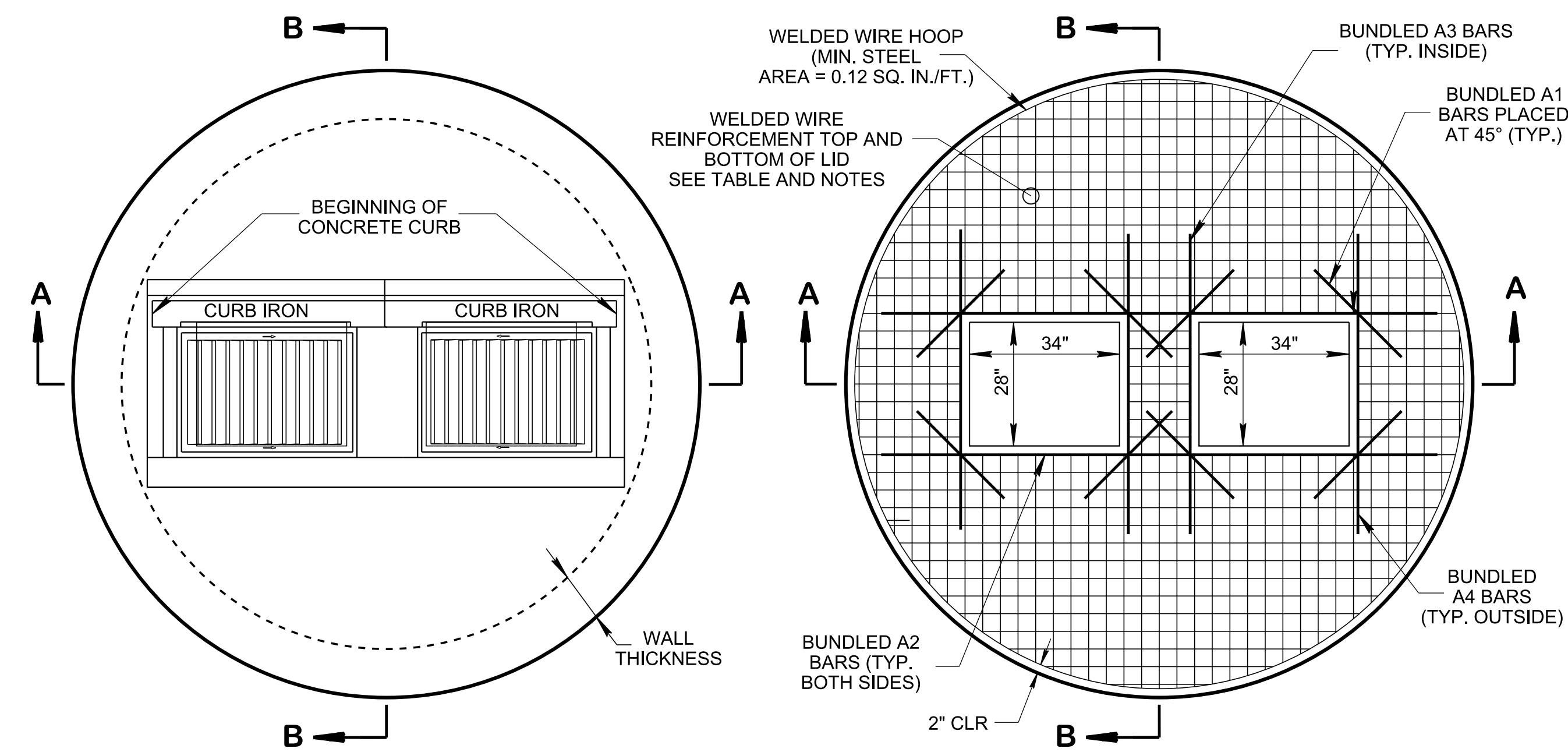


4/4/2024 11:00:33 AM P:\StandDraw\DESIGN STANDARDS\Standards Drawings Library\Standard Roadway Drawings - CURRENT\In Progress\10-103.00 Catch Basins and Manholes IP\Round Structure IP\DR2-20240106.dgn

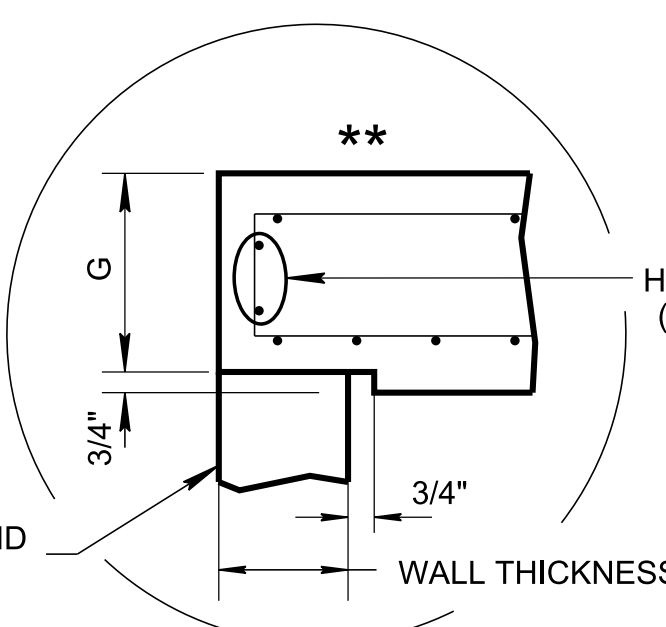


PLAN VIEW

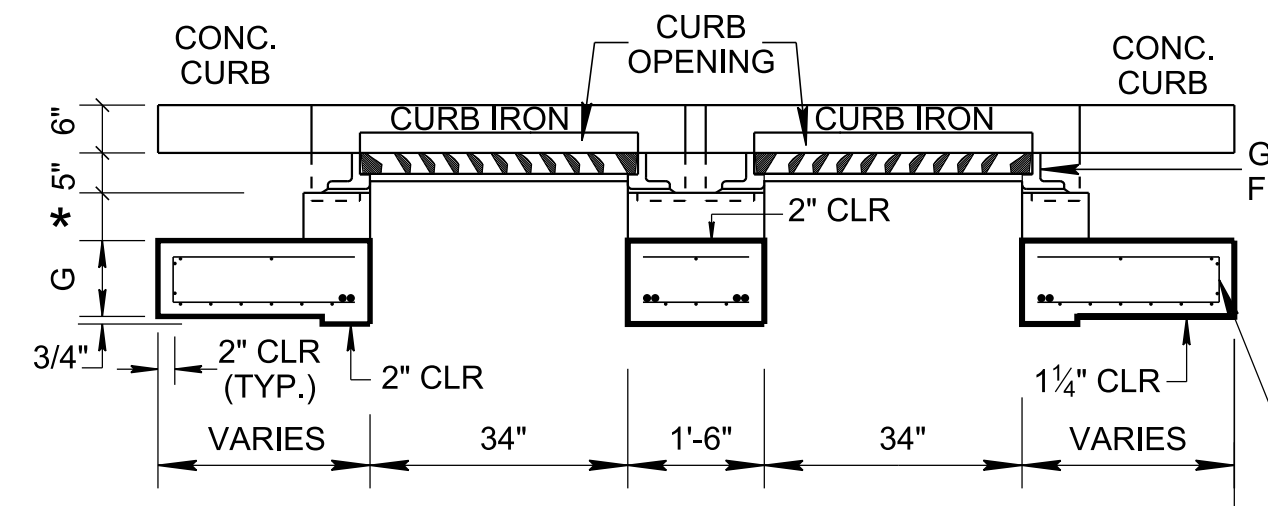
LID REINFORCING

A-BARS PLACED ON BOTTOM OF LID ONLY SHOWING BOTTOM OF LID

** ALTERNATIVE JOINT DETAILS MAY BE ACCEPTABLE. SEE STANDARD DRAWING D-RS-3 FOR ALTERNATIVE JOINT DETAILS.

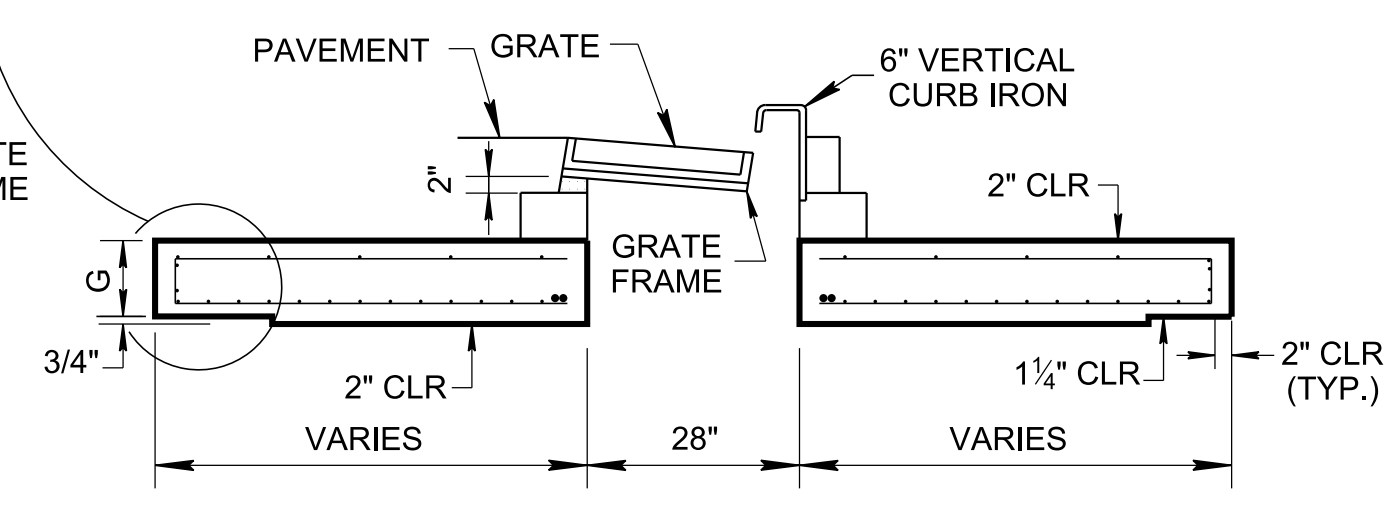


MINIMUM TWO HORIZONTAL WIRES (4" MAX. SPACING)



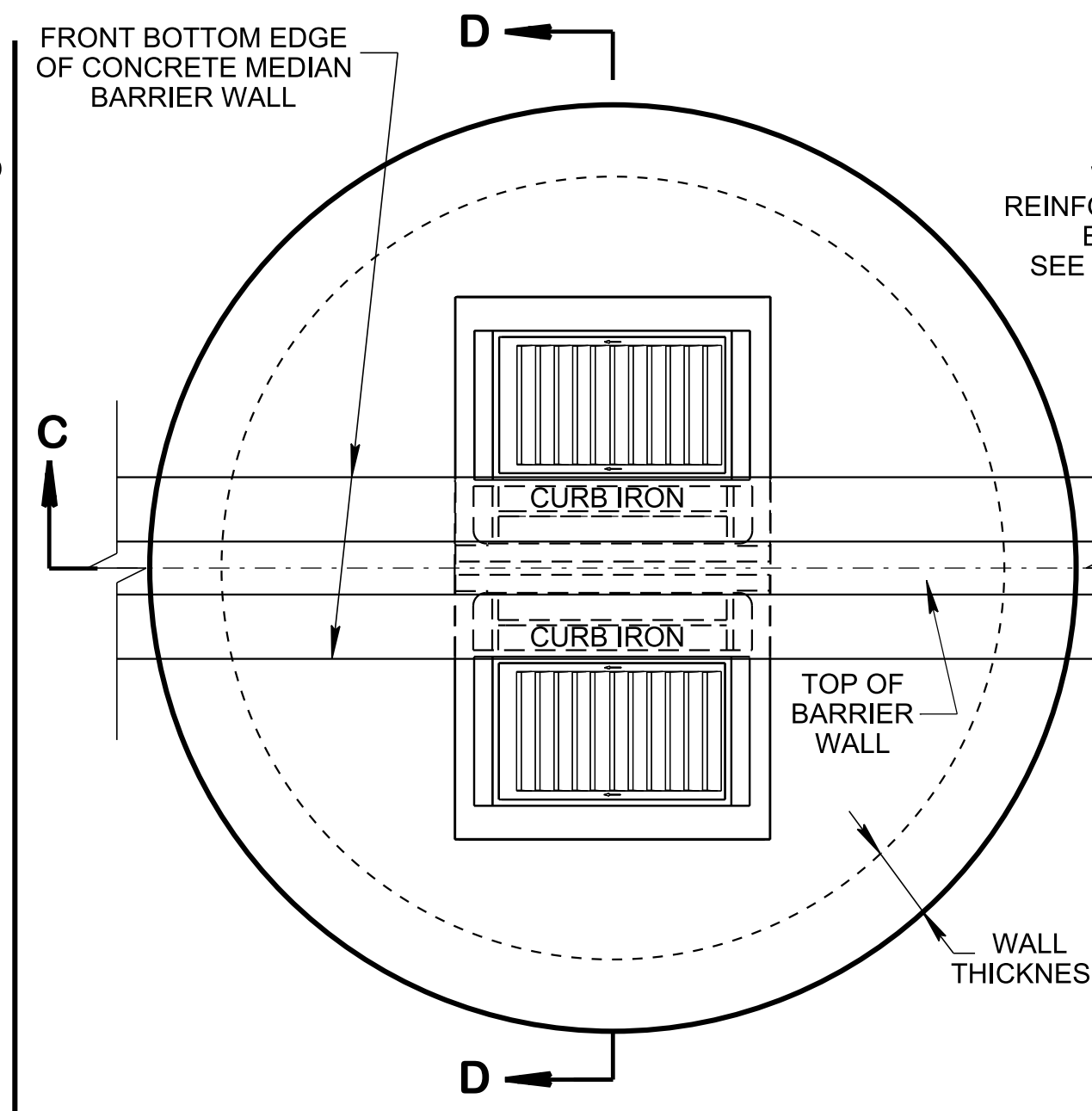
SECTION A-A

**DOUBLE OPENING CURB INLETS
USE FOR STRUCTURE NO. 14RB ONLY**



SECTION B-B

* THIS DIMENSION MAY VARY FROM A MINIMUM OF 0 INCHES TO A MAXIMUM OF 24 INCHES. THE CONTRACTOR HAS THE OPTION OF USING STANDARD PRECAST CONCRETE RISER FRAMES. PRECAST CONCRETE RISER FRAMES SHALL BE USED AS SHOWN ON STANDARD DRAWING D-RF-1.

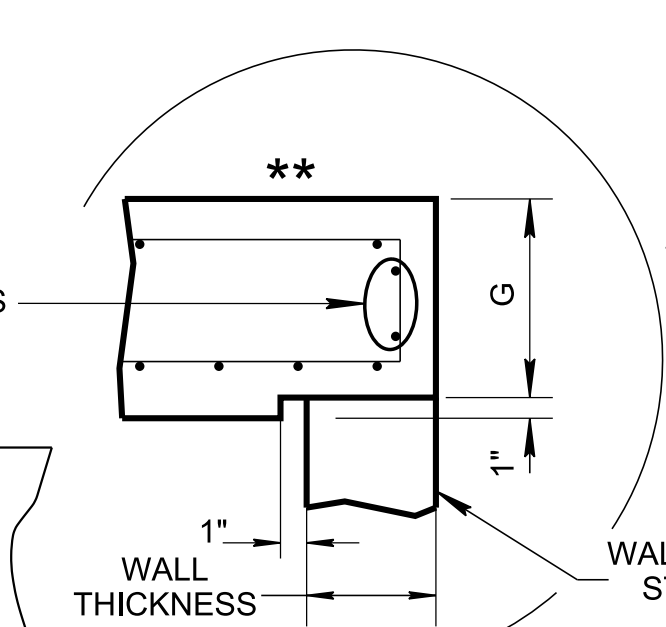


PLAN VIEW

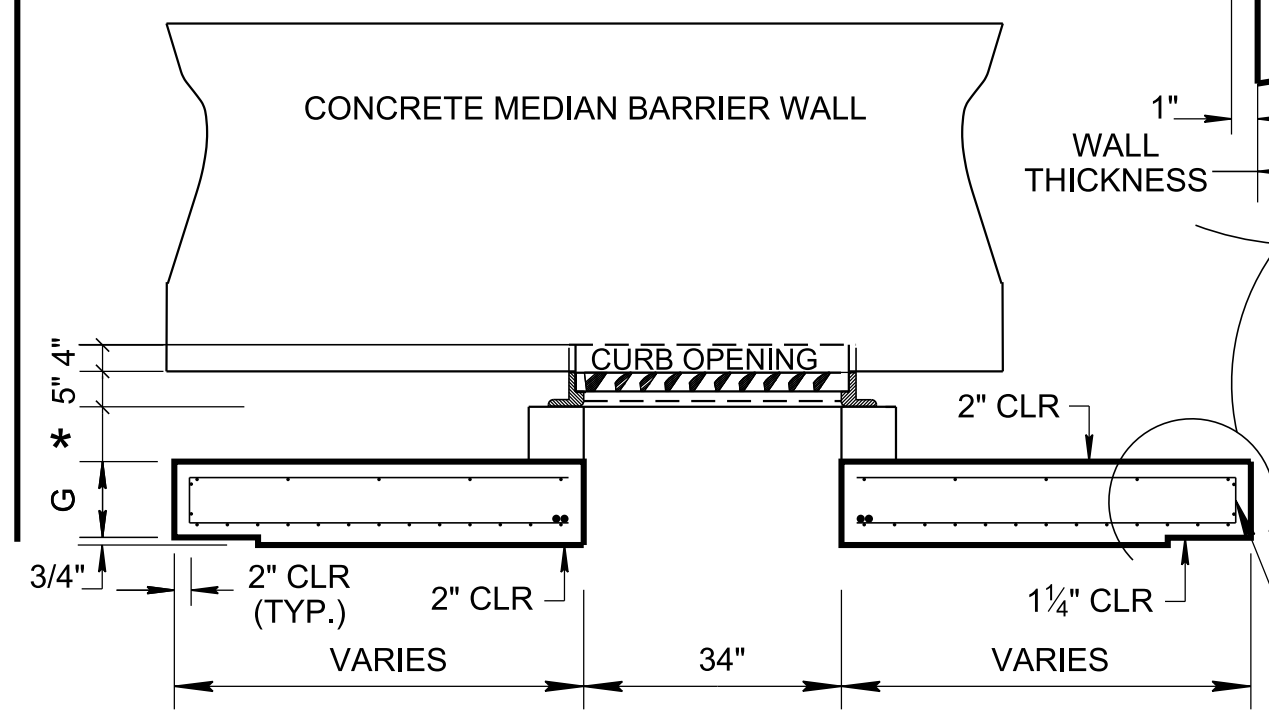
LID REINFORCING

A-BARS PLACED ON BOTTOM OF LID ONLY SHOWING BOTTOM OF LID

** ALTERNATIVE JOINT DETAILS MAY BE ACCEPTABLE. SEE STANDARD DRAWING D-RS-3 FOR ALTERNATIVE JOINT DETAILS.

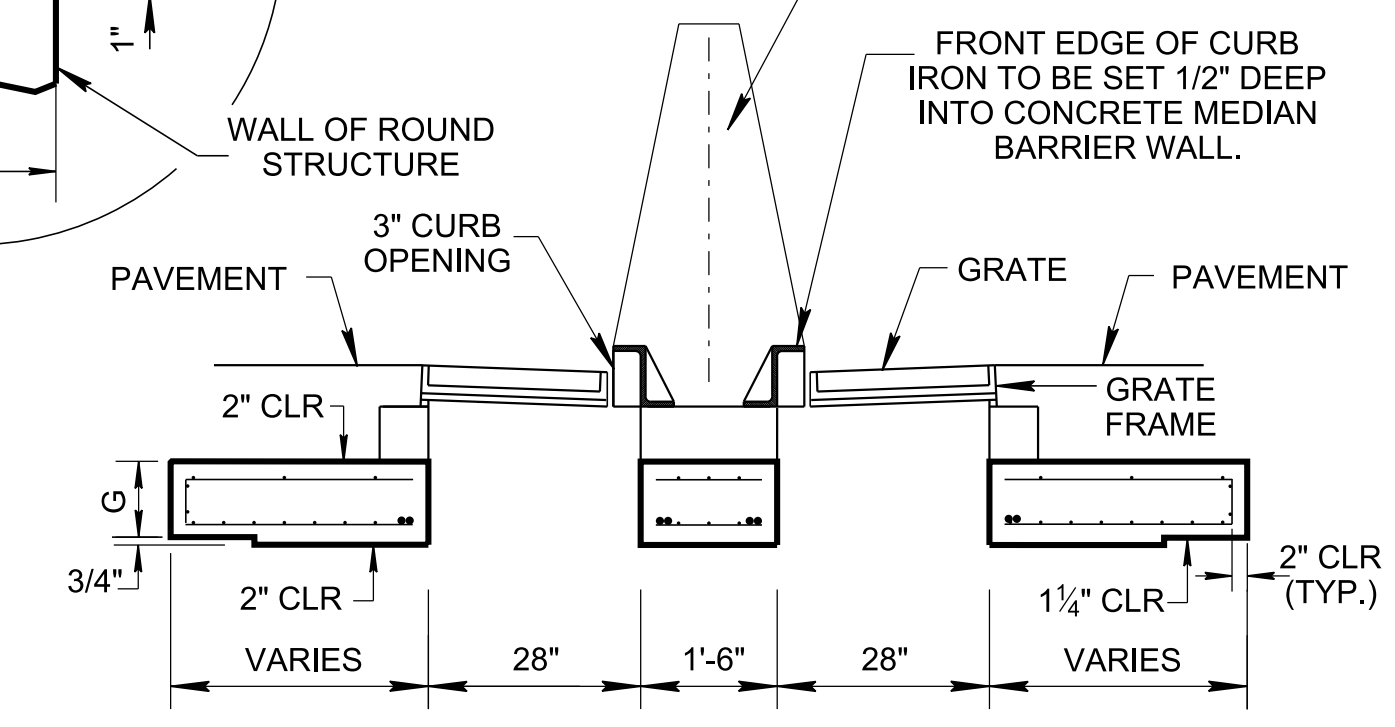


MINIMUM TWO HORIZONTAL WIRES (4" MAX. SPACING)

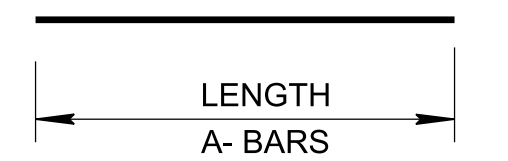


SECTION C-C

**DOUBLE OPENING WALL INLET
USE FOR STRUCTURE NO. 31R ONLY**



SECTION D-D



BAR SHAPE LEGEND
SEE TABLE FOR A-BAR LENGTHS

ROUND LID DIMENSIONS & REINFORCEMENT TABLE													
ROUND STRUCTURE INSIDE DIA. (ID)	WALL THICKNESS	STRUCTURE NUMBER	LID DIA.	G	MIN. STEEL AREA FOR LID				A-BAR SIZE	A1 BAR LENGTH	A2 BAR LENGTH	A3 BAR LENGTH	A4 BAR LENGTH
					BOTTOM MAT WWR		TOP MAT WWR						
					STEEL AREA (SQ. INCH/ FT)	SPACING (4" MAX.) & SIZE	STEEL AREA (SQ. INCH/ FT)	SPACING (4" MAX.) & SIZE					
84"	8"	31R	8'-4"	10"	0.41	4x4-D14xD14	0.12	4X4-D4xD4	(2) #4	1'-10"	7'-3"	5'-8"	4'-6"
96"	9"	14RB	9'-6"	10"	0.46	4x4-D16xD16	0.12	4X4-D4xD4	(2) #5	2'-4"	8'-8"	5'-8"	5'-1"
	9"	31R	9'-6"	10"	0.46	4x4-D16xD16	0.12	4X4-D4xD4	(2) #5	2'-4"	8'-6"	6'-2"	6'-2"
108"	10"	14RB	10'-8"	10"	0.51	4x4-D17xD17	0.12	4X4-D4xD4	(2) #5	2'-4"	9'-11"	5'-8"	5'-8"
	10"	31R	10'-8"	10"	0.52	4x4-D18xD18	0.12	4X4-D4xD4	(2) #5	2'-4"	9'-6"	6'-2"	6'-2"
120"	11"	14RB	11'-10"	10"	0.56	4x4-D19xD19	0.12	4X4-D4xD4	(2) #5	2'-4"	10'-6"	5'-8"	5'-8"
	11"	31R	11'-10"	10"	0.58	4x4-D20xD20	0.12	4X4-D4xD4	(2) #5	2'-4"	9'-6"	6'-2"	6'-2"

- GENERAL NOTES**
- (A) ALL PRECAST ELEMENTS TO MEET ASTM C478 (CURRENT EDITION) AND AASHTO M199 (CURRENT EDITION) AND AASHTO LRFD UNLESS SUPERSEDED BY THE STANDARD DRAWINGS.
 - (B) THE FOLLOWING MATERIAL PROPERTIES ARE REQUIRED FOR PRECAST STRUCTURES:
 CONCRETE: $f'_c = 4,000$ POUNDS PER SQUARE INCH AT 28 DAYS
 WWR MEETING ASTM A1064, $F_y = 70,000$ POUNDS PER SQUARE INCH. DEFORMED WIRE SHALL BE USED FOR ALL LIDS.
 REINFORCING STEEL: ASTM A615, $F_y = 60,000$ POUNDS PER SQUARE INCH
 ALL REINFORCING IS TO BE INSTALLED AS DETAILED.
 - (C) BOTTOM MAT OF WWR IN LIDS SHALL HAVE A MAXIMUM SPACING OF 4 INCHES IN EACH DIRECTION. IF REBAR IS USED, MAX. SPACING = 12" EACH DIRECTION.
 - (D) TOP MAT OF WWR SHALL HAVE A MINIMUM OF 0.12 SQ. INCH PER FT IN BOTH DIRECTIONS.
 - (E) PAYMENT OF LID, GRATE, FRAME AND CURB IRON SHALL BE INCLUDED IN THE PRICE BID FOR ROUND STRUCTURES. SEE STANDARD DRAWING D-RS-1 FOR GENERAL NOTES & PAY ITEM NUMBERS.
 - (F) REFER TO STANDARD DRAWINGS D-RS-2 AND D-RS-3 FOR ROUND STRUCTURES BASE DETAIL.

STATE OF TENNESSEE
STANDARD DRAWING
DEPARTMENT OF TRANSPORTATION

**ROUND LID DETAILS
FOR DOUBLE CURB
AND WALL INLET**

01-06-2024 D-RL-2