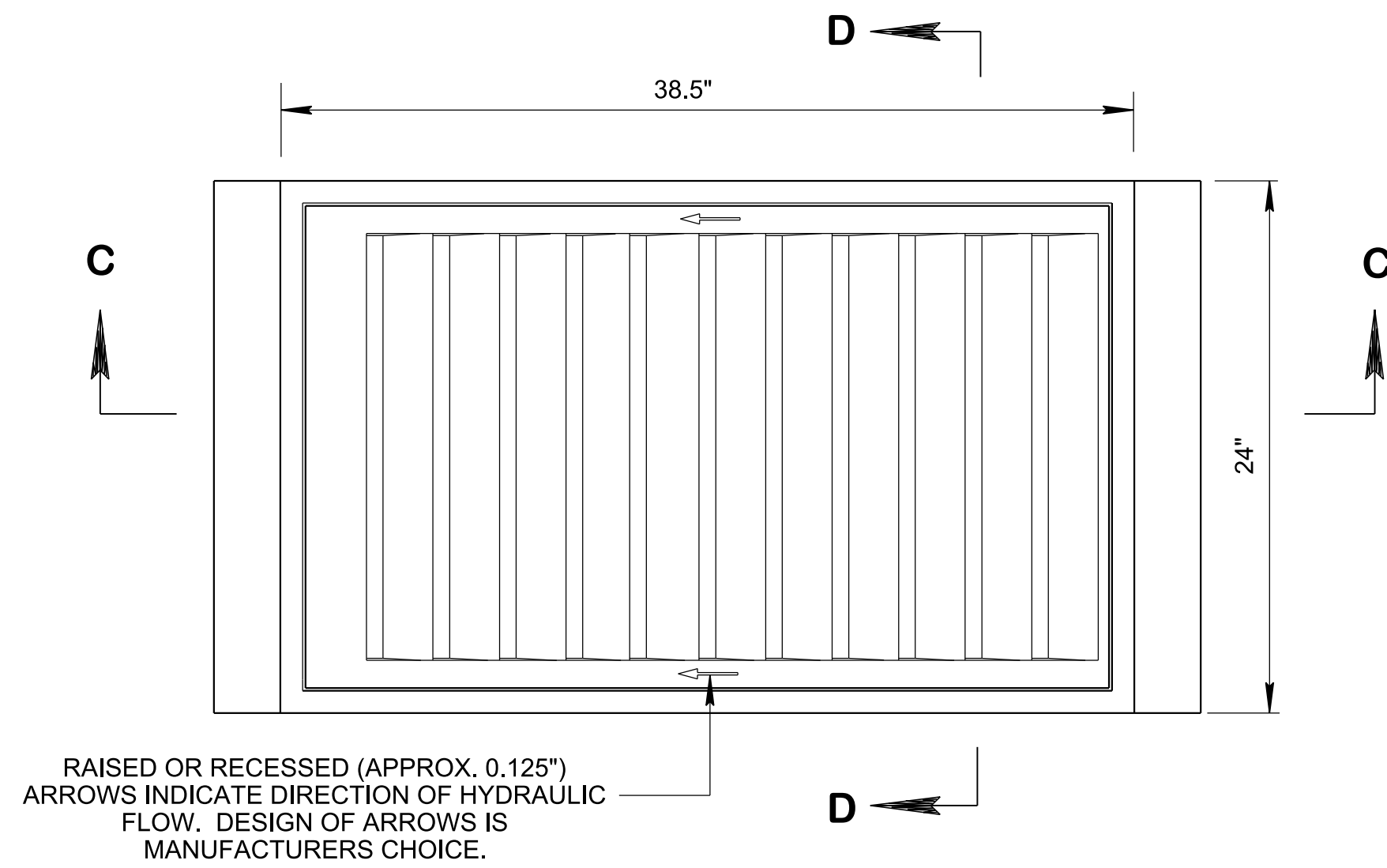
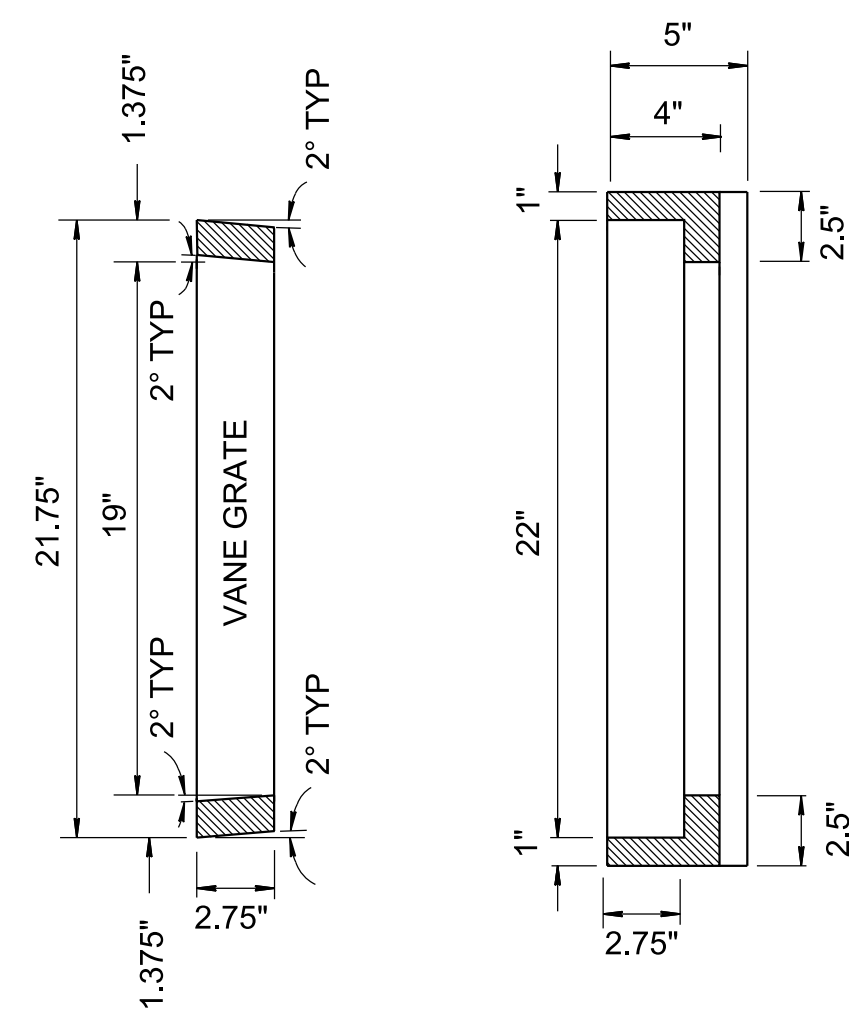


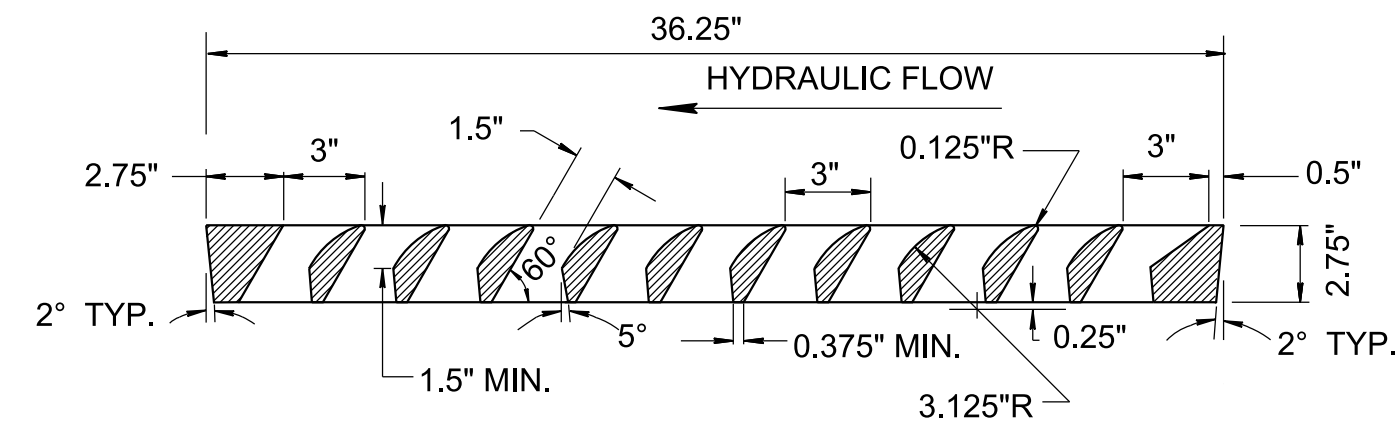
2/24/2020 8:50:19 AM P:\StandDraw\DESIGN STANDARDS\Standards Drawings Library\Standard Roadway Drawings - CURRENT\10-102.00 Catch Basins and Manholes --1102.01 Catch Basins\DCBB13-20190628.dgn



PLAN VIEW

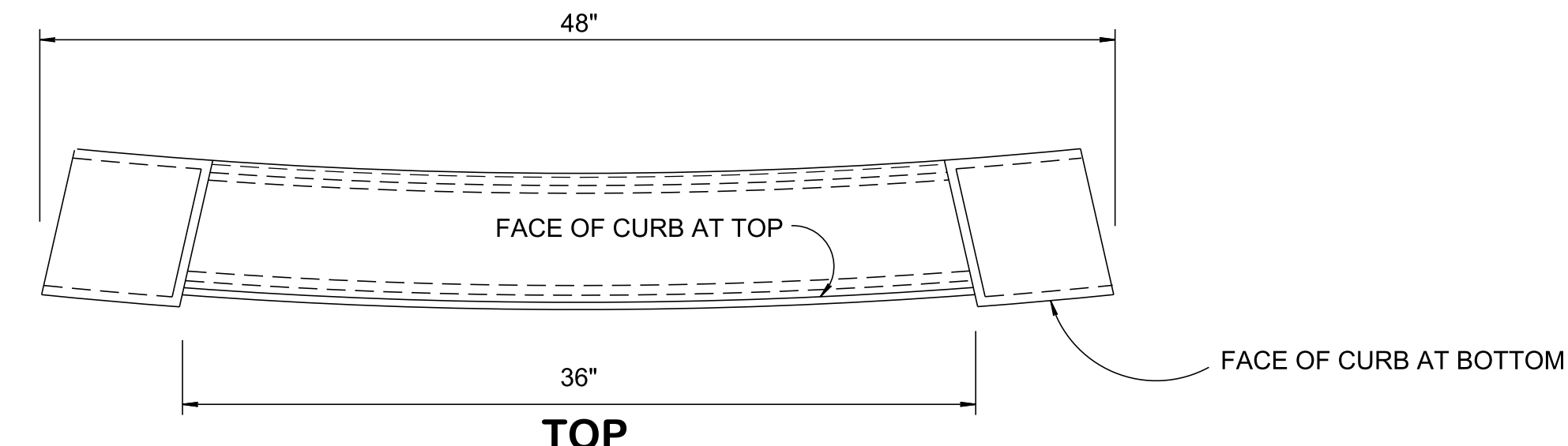


SECTION D-D

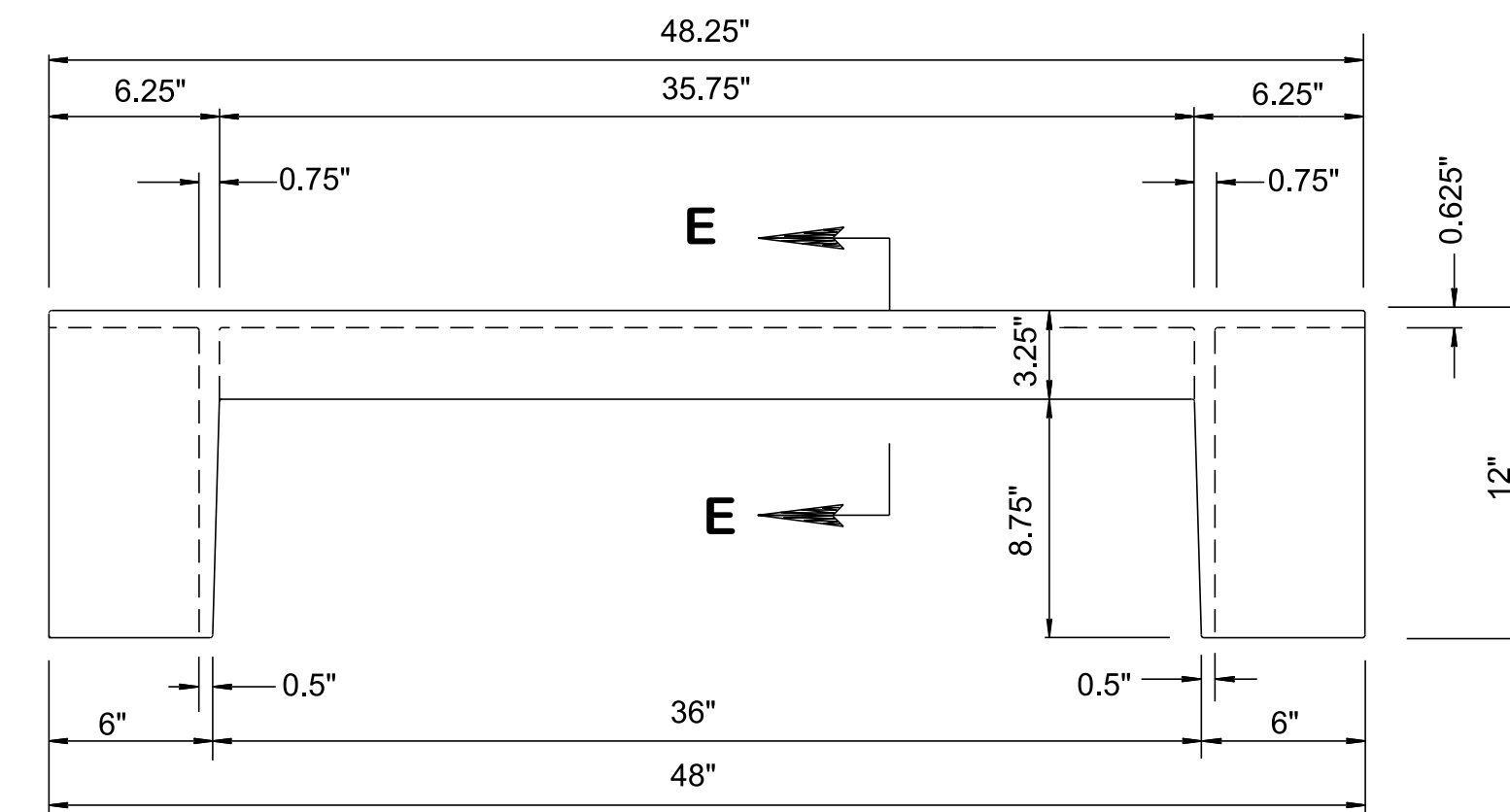


SECTION C-C

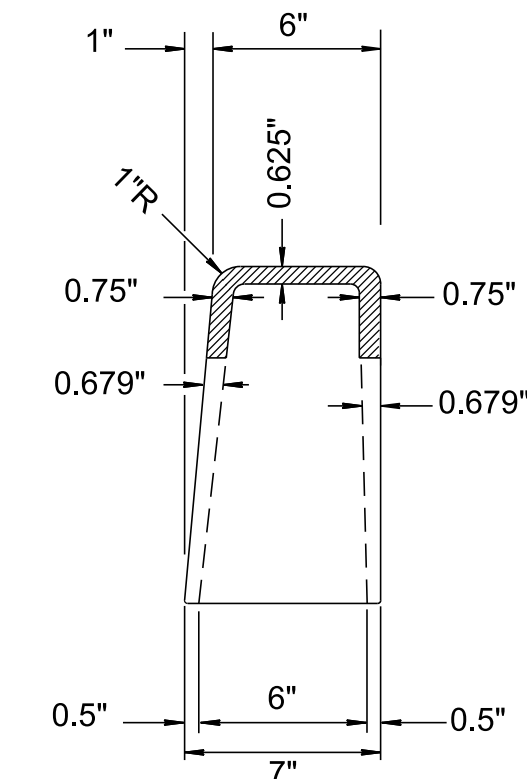
GRATE AND FRAME DETAILS



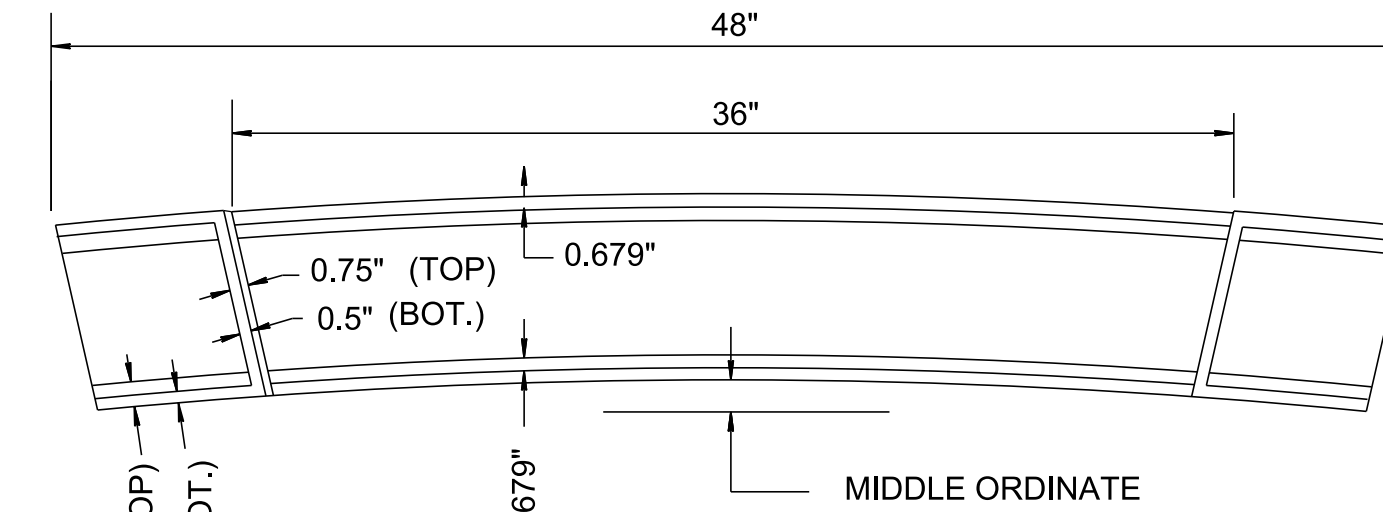
TOP



FRONT



SECTION E-E



BOTTOM

CURB INLET CASTING

WEIGHTS FOR SINGLE GRATE CATCH BASIN	
FRAME -----	265 LBS.
GRATE -----	250 LBS.
CURB INLET -----	155 LBS.
TOTAL -----	670 LBS. *

NOTE:
* FOR NO. 11 CATCH BASIN, DEDUCT 155 LBS. PER " GRATE ", SINCE NO CURB INLET IS REQUIRED.

FRACTION TABLE	
1/8"	- 0.125"
1/4"	- 0.250"
3/8"	- 0.375"
1/2"	- 0.500"
5/8"	- 0.625"
3/4"	- 0.750"
13/16"	- 0.813"

MIDDLE ORDINATES OF INLET CASTINGS FOR VARIOUS CURB RETURN RADIUS	
① ② CURB RADIUS	MIDDLE ORDINATE
10'	2.406"
15' TO 24'	1.375"

- ① CURB RADIUS FOR INLET CURB CASTING TO MATCH RADIUS SHOWN ON PLANS.
- ② FOR RADIUS GREATER THAN 25' USE TYPE 12 CATCH BASINS.

GENERAL NOTES	
(A)	WHEN A SIX (6) INCH VERTICAL CURB IS REQUIRED USE THIS DRAWING ON ALL VARIATIONS OF NUMBER 13 CATCH BASIN CONTAINED IN THIS SECTION OF THE STANDARD DRAWINGS.
(B)	FOR CLEARNESS, ALL CORNERS ARE SHOWN ON THIS DRAWING BY STRAIGHT LINES WITH THE EXCEPTION OF THE 1" RADIUS AT THE TOP OF FACE OF CURB. ALL INSIDE CORNERS SHOULD BE MADE WITH 1/2" x 1/2" FILLETS OR 3/4" RADIUS FILLETS FOR EASE IN MOLDING.
(C)	IF PAID FOR SEPARATELY CAST IRON USED IN CASTINGS IS TO BE PAID FOR UNDER ITEM NO. 611-03.04, GRAY IRON CASTINGS (CATCH BASIN), LB.
(D)	IF CATCH BASIN IS PAID FOR UNDER EACH, THEN COST OF CAST IRON USED IN CASTINGS IS TO BE PAID FOR UNDER THE ITEM BID FOR TYPE 13 CATCH BASIN. SEE VARIOUS STANDARD DRAWINGS FOR TYPE 13 CATCH BASIN FOR APPLICABLE PAY ITEMS.

- REV. 7-1-76: CHANGED DEPARTMENT NAME.
- REV. 1-1-76: CHANGED DRAWING NO. FROM S-C-13a(68) TO D-CBC-13.
- REV. 3-15-76: DELETED REFERENCE TO OLD DRAWING NUMBER AND SUBSTITUTED NEW DRAWING NUMBER.
- REV. 9-05-94: REDREW SHEET, REORGANIZED SHEET AND CHANGED FRAME AND GRATE FROM TYPE "C" TO "B". CHANGED DRAWING NO. FROM D-CBC-13 TO D-CBB-13.
- REV. 5-27-95: CHANGED GENERAL NOTE (A).
- REV. 2-28-97: CHANGED GENERAL NOTE (A).
- REV. 5-27-97: CHANGED DESCRIPTION IN RIGHT LOWER CORNER BLOCK.
- REV. 3-20-00: IN MIDDLE ORDINATES OF INLET CASTINGS FOR VARIOUS CURB RETURN RADIUS TABLES ELIMINATED 25' TO 35' CURB DATA, ON RADIUS GREATER THAN 25' TYPE 13 CATCH BASIN ARE NO LONGER USED. ADDED FOOTNOTE (2).
- REV. 5-27-01: CHANGED GENERAL NOTE (D).
- REV. 06-28-19: REVISED DRAWING NAME AND GENERAL NOTE (A) BY CHANGING NONMOUNTABLE TO VERTICAL. REDREW SHEET.

MINOR REVISION -- FHWA APPROVAL NOT REQUIRED

STATE OF TENNESSEE
STANDARD DRAWING
DEPARTMENT OF TRANSPORTATION

TYPE 'B'
CAST IRON
FRAME, GRATE
& VERTICAL INLET
DETAILS FOR NO. 13
TYPE CATCH BASINS