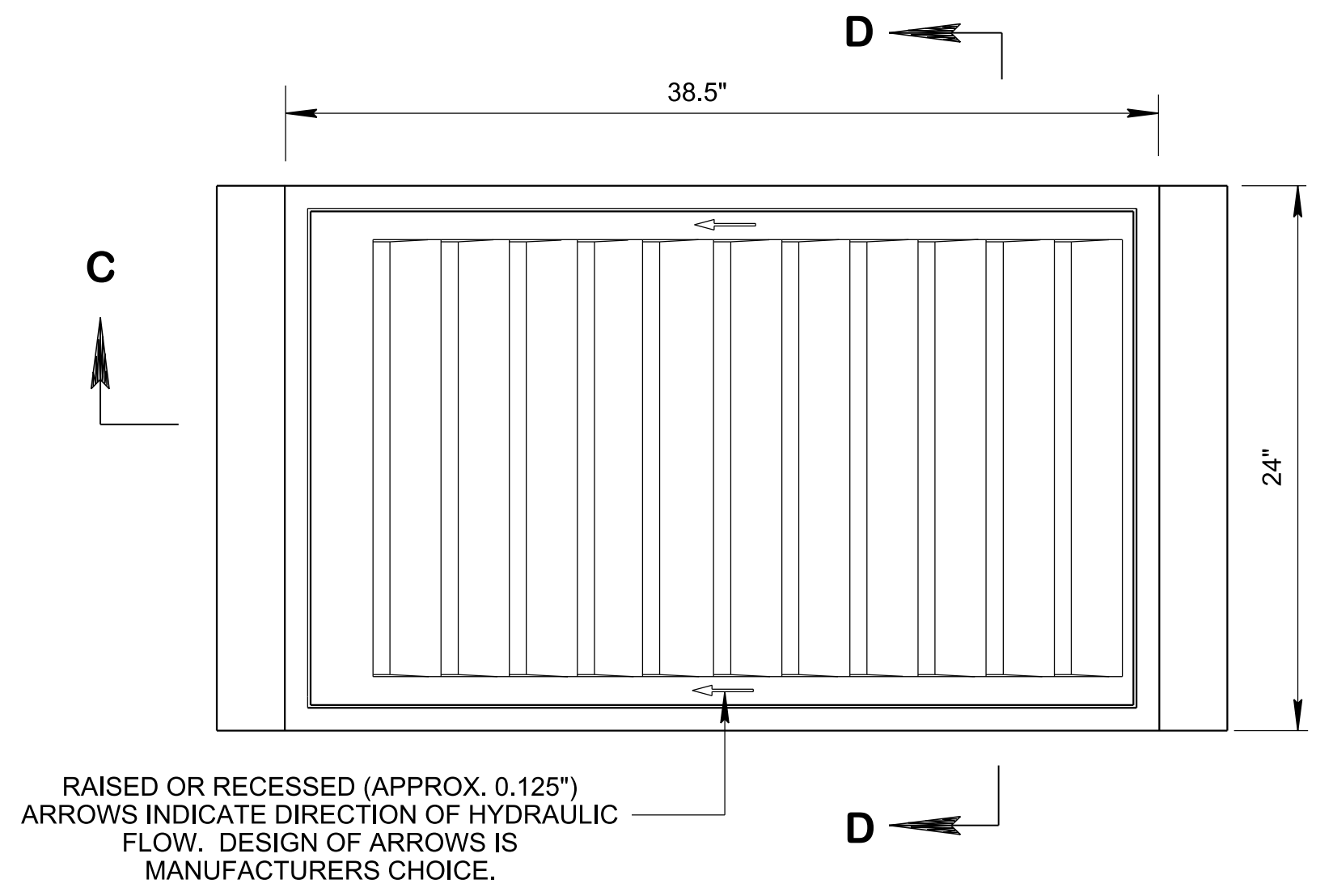
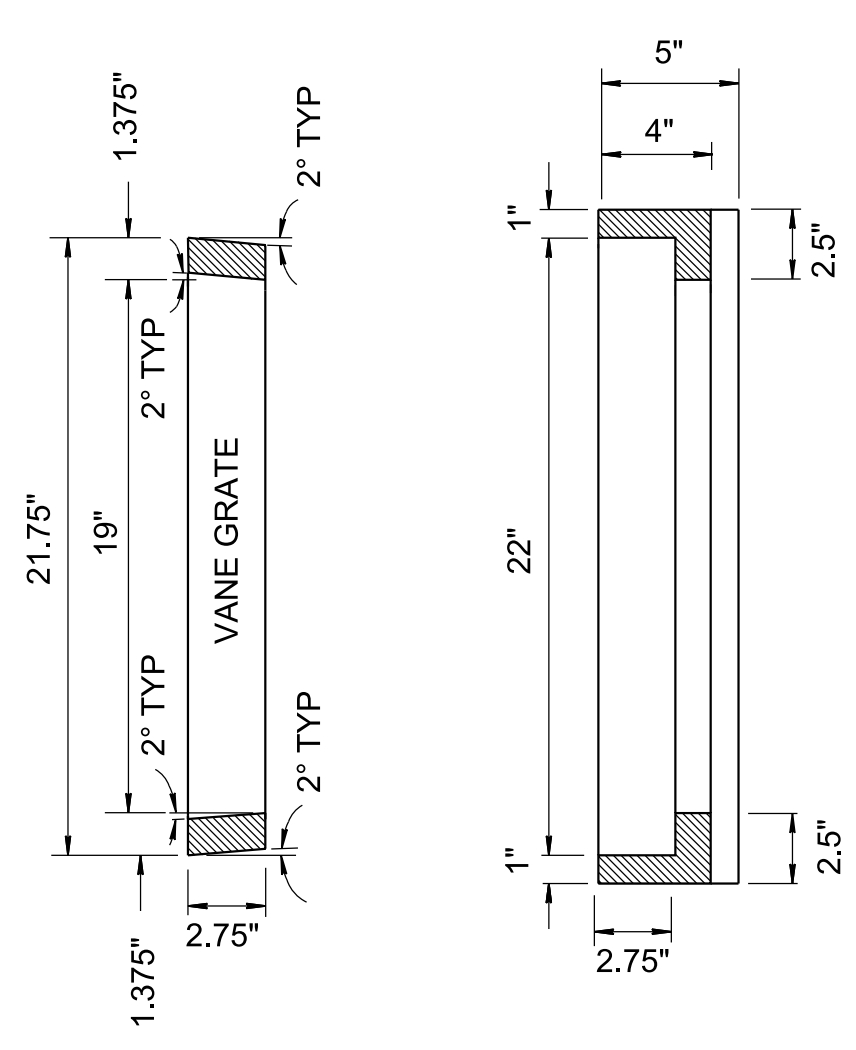


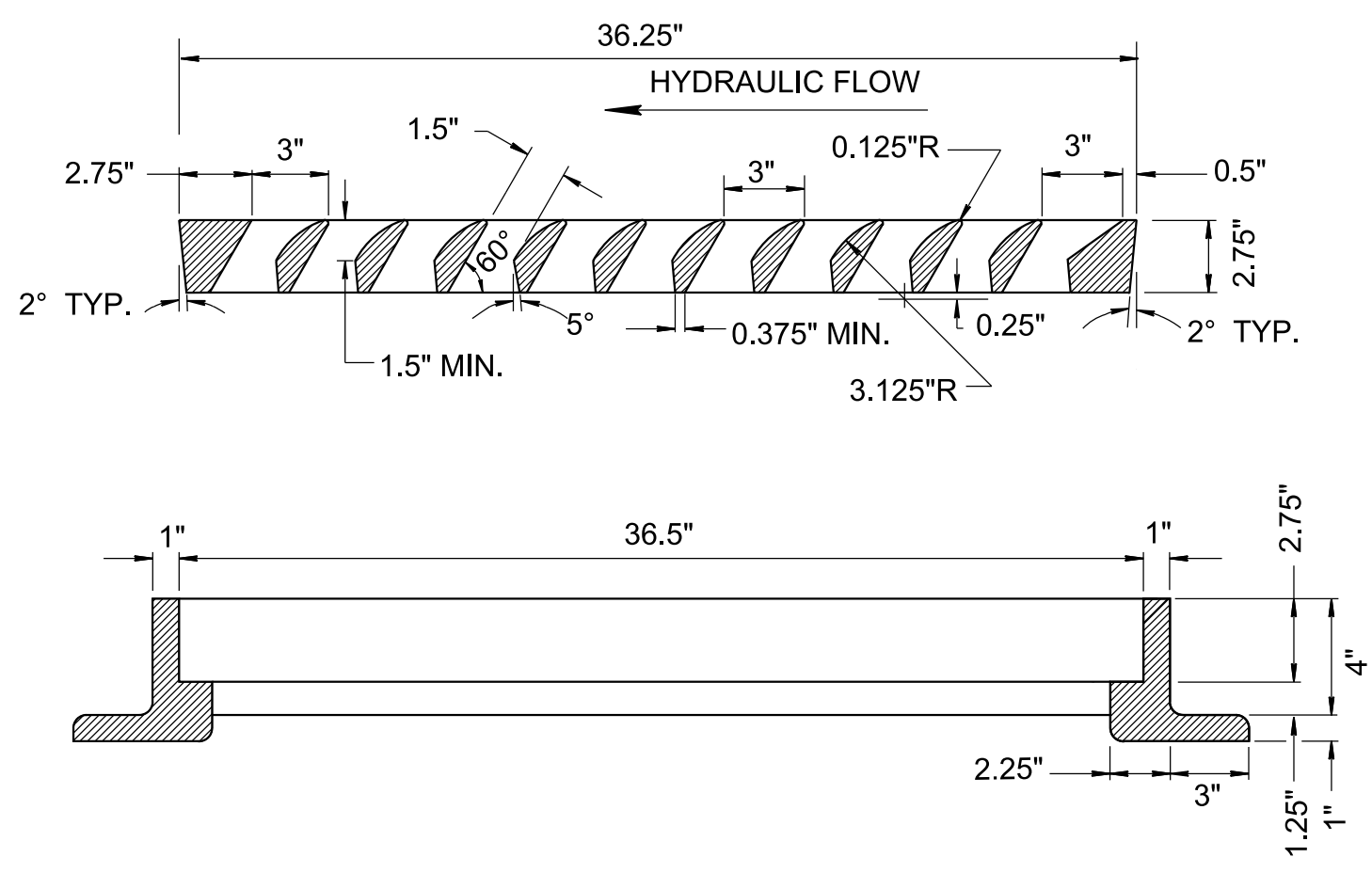
2/24/2020 8:48:44 AM P:\StandDraw\DESIGN STANDARDS\Standards Drawings Library\Standard Roadway Drawings - CURRENT\10-102.00 Catch Basins and Manholes --1102.01 Catch Basins\DCBB12B-20190628.dgn



PLAN VIEW



SECTION D-D

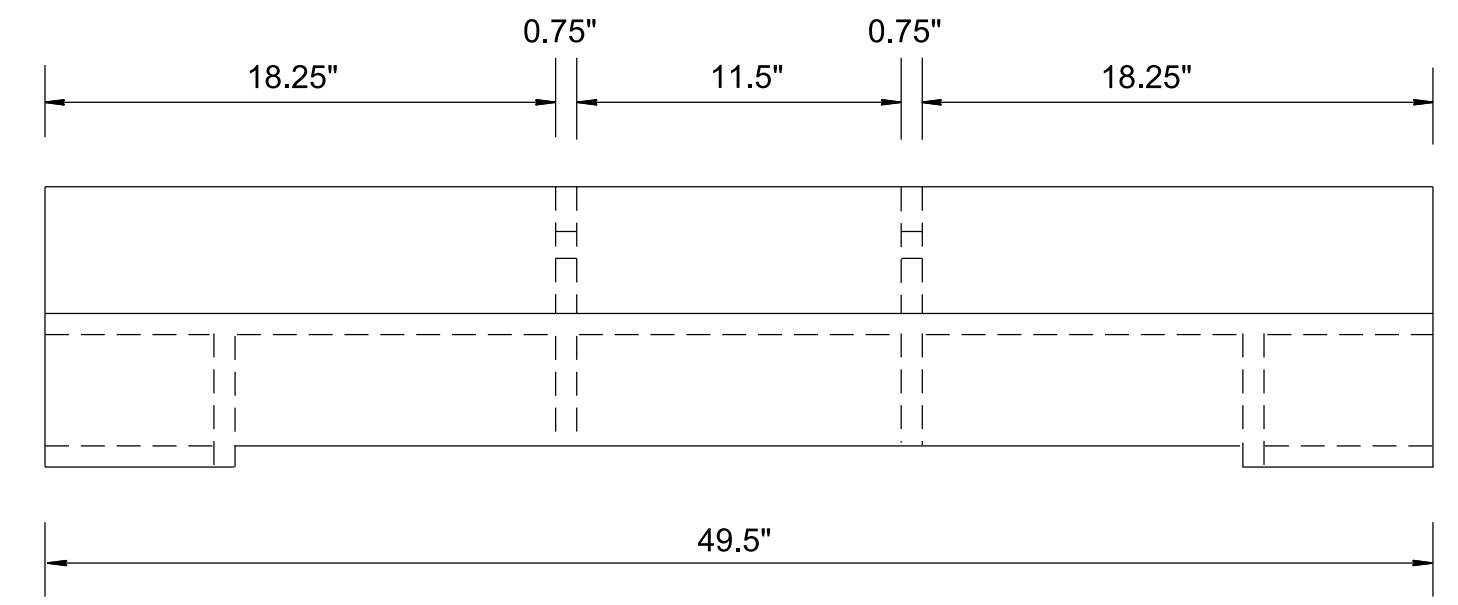


SECTION C-C

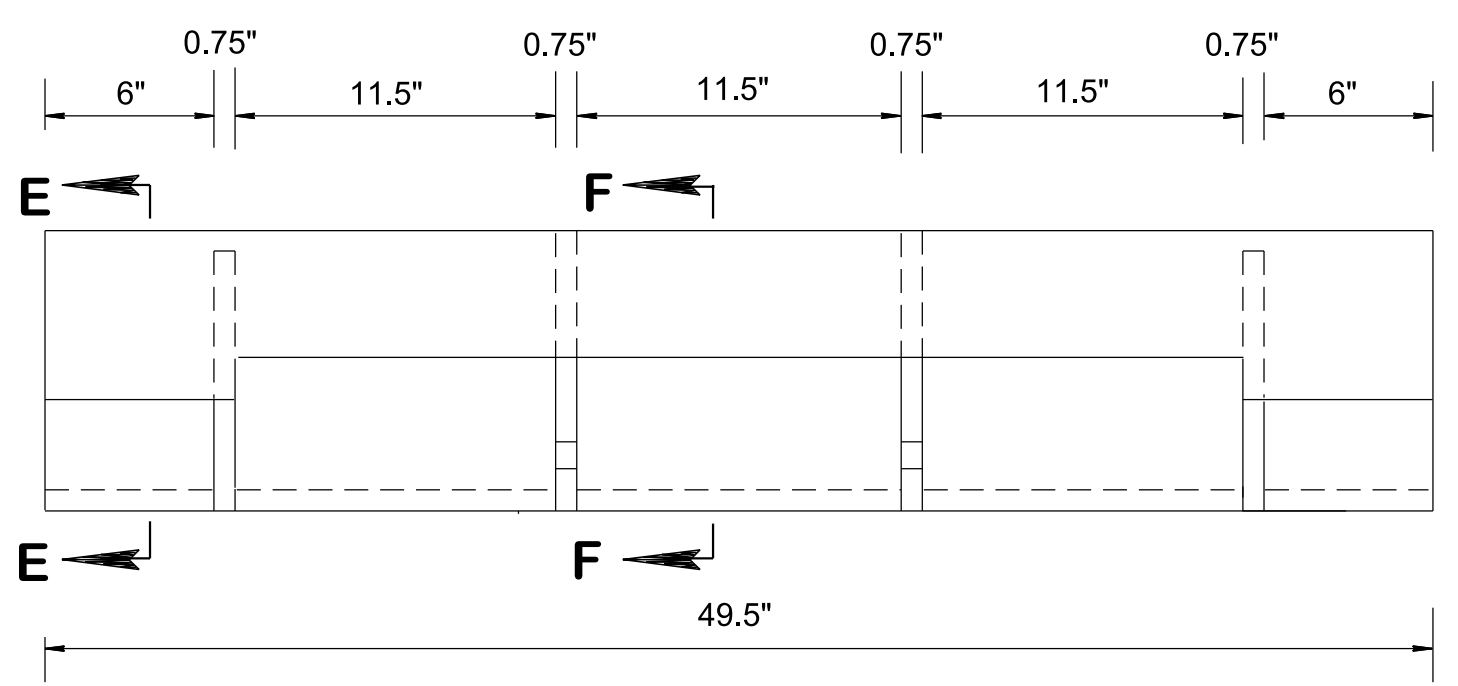
GRATE AND FRAME DETAILS

WEIGHTS FOR SINGLE GRATE CATCH BASIN	
FRAME -----	265 LBS.
GRATE -----	250 LBS.
CURB INLET -----	215 LBS.
<hr/>	
TOTAL -----	730 LBS.

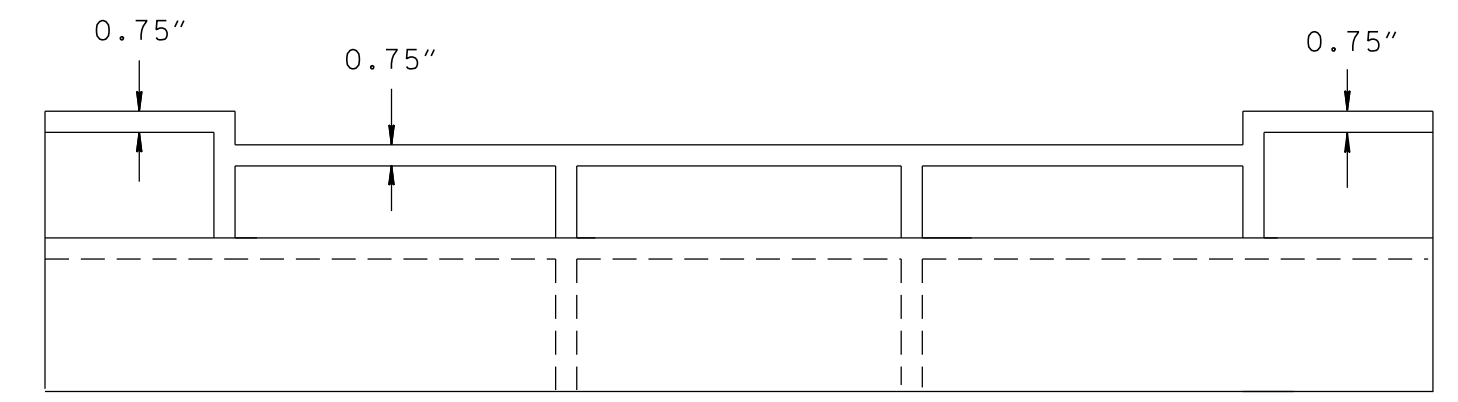
FRACTION TABLE	
1/8"	- 0.125"
1/4"	- 0.250"
3/8"	- 0.375"
1/2"	- 0.500"
5/8"	- 0.625"
11/16"	- 0.688"
3/4"	- 0.750"
7/8"	- 0.875"



TOP

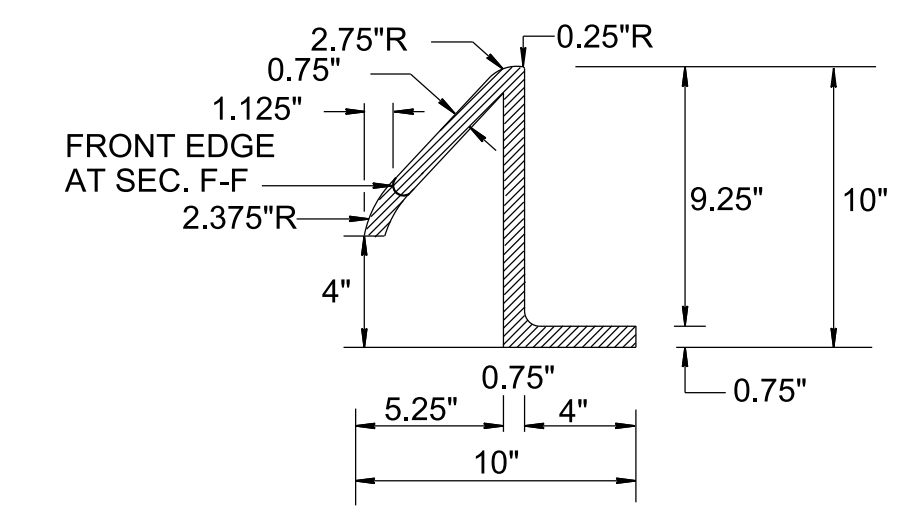


FRONT

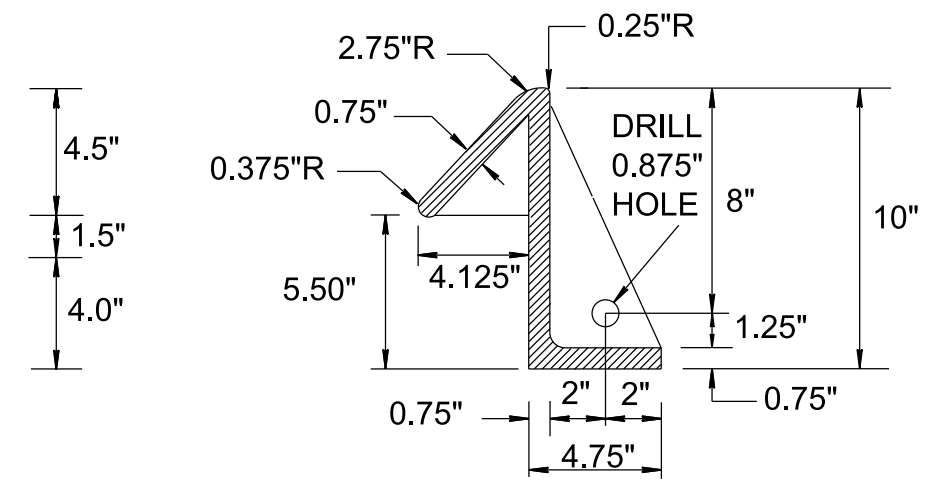


BOTTOM

CURB INLET CASTING



SECTION E-E



SECTION F-F

GENERAL NOTES	
(A)	WHEN A SIX (6) INCH SLOPING CURB IS REQUIRED USE THIS DRAWING ON ALL VARIATIONS OF NUMBER 25, 26, AND 27 CATCH BASINS CONTAINED IN THIS SECTION OF THE STANDARD DRAWINGS.
(B)	FOR CLEARNESS, ALL CORNERS ARE SHOWN ON THIS DRAWING BY STRAIGHT LINES WITH THE EXCEPTION OF THE 1" RADIUS AT THE TOP OF FACE OF CURB. ALL INSIDE CORNERS SHOULD BE MADE WITH 1/2" x 1/2" FILLETS OR 3/4" RADIUS FILLETS FOR EASE IN MOLDING.
(C)	IF PAID FOR SEPARATELY CAST IRON USED IN CASTINGS IS TO BE PAID FOR UNDER ITEM NO. 611-03.04, GRAY IRON CASTINGS (CATCH BASIN), LB.
(D)	IF CATCH BASIN IS PAID FOR UNDER EACH, THEN COST OF CAST IRON USED IN CASTINGS IS TO BE PAID FOR UNDER THE SPECIFIC ITEM BID FOR THAT CATCH BASIN. SEE STANDARD DRAWINGS FOR TYPE 25, 26 AND 27 CATCH BASINS FOR APPLICABLE PAY ITEMS FOR EACH TYPE OF CATCH BASIN.

- REV. 10-26-93: DREW NEW SHEET COMBINING MATERIAL FROM STANDARD DRAWING NOS. D-CB-12-32 AND D-CBB-12A.
- REV. 9-05-94: CHANGED DRAWING NAME BY ADDING 6" DESIGNATION. CHANGED DRAWING NO. FROM D-CBB-12M TO D-CBB-12B.
- REV. 5-27-95: CHANGED SHEET NAME AND GENERAL NOTE (A).
- REV. 1-19-96: CHANGED SHEET NAME AND GENERAL NOTE (A).
- REV. 10-26-00: CHANGED SHEET NAME AND GENERAL NOTE (A).
- REV. 5-27-01: CHANGED GENERAL NOTE (D).
- REV. 06-28-19: REVISED DRAWING NAME AND GENERAL NOTE (A) BY CHANGING MOUNTABLE TO SLOPING. REDREW SHEET.

MINOR REVISION -- FHWA APPROVAL NOT REQUIRED

STATE OF TENNESSEE
STANDARD DRAWING
DEPARTMENT OF TRANSPORTATION

TYPE 'B' CAST IRON FRAME, GRATE & 6" SLOPING INLET DETAILS FOR NOS. 25, 26 & 27 TYPE CATCH BASINS