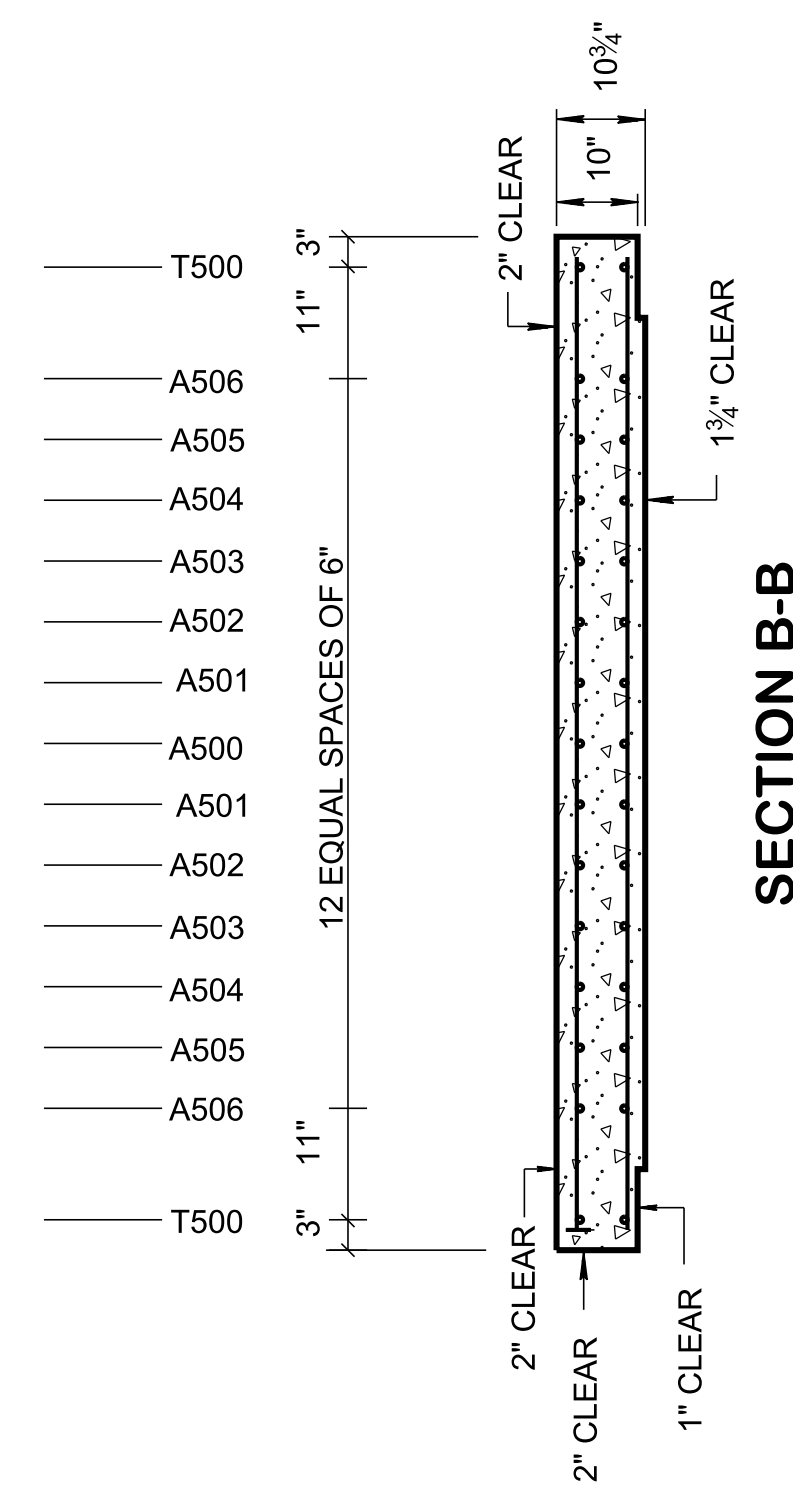
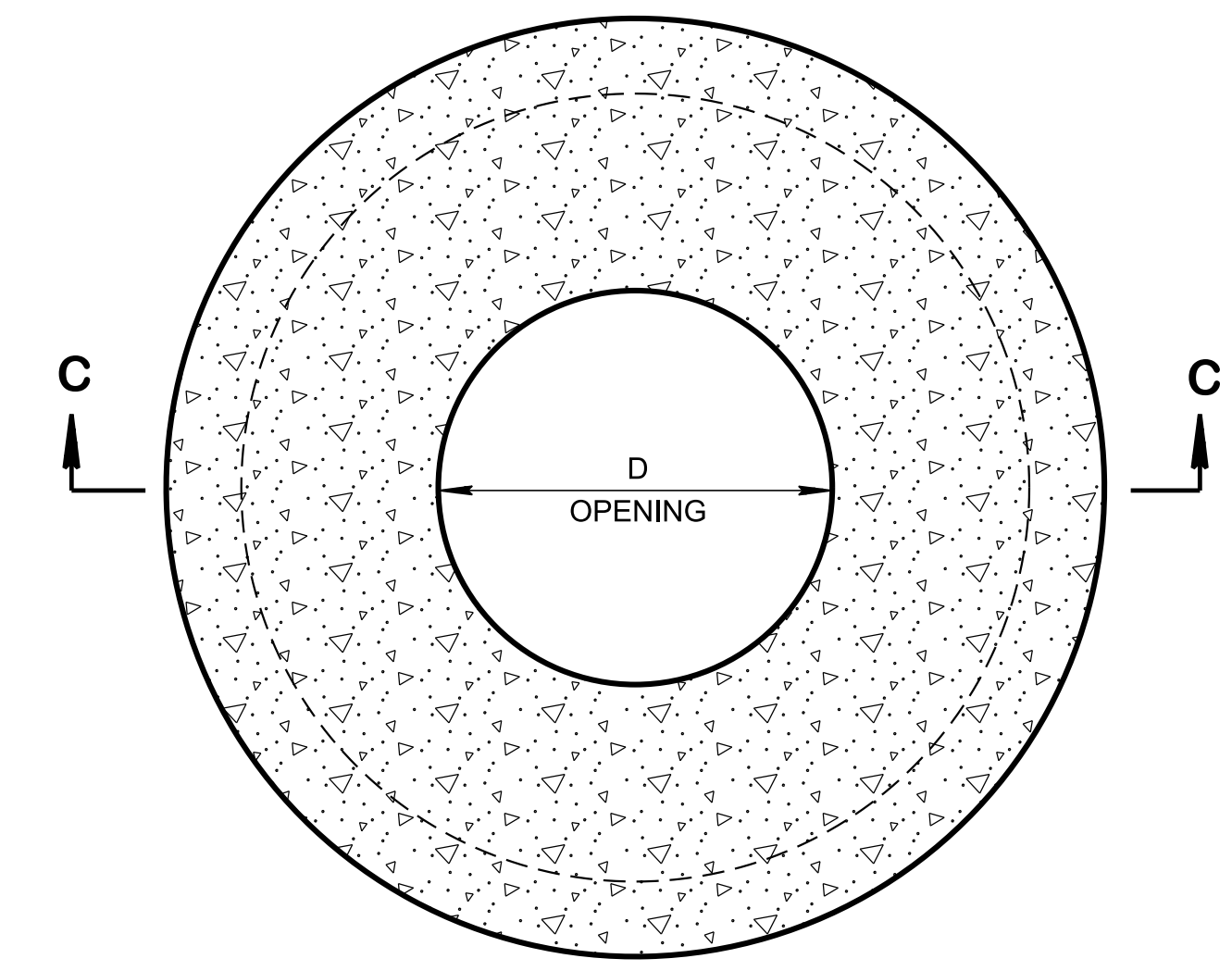


LID REINFORCING

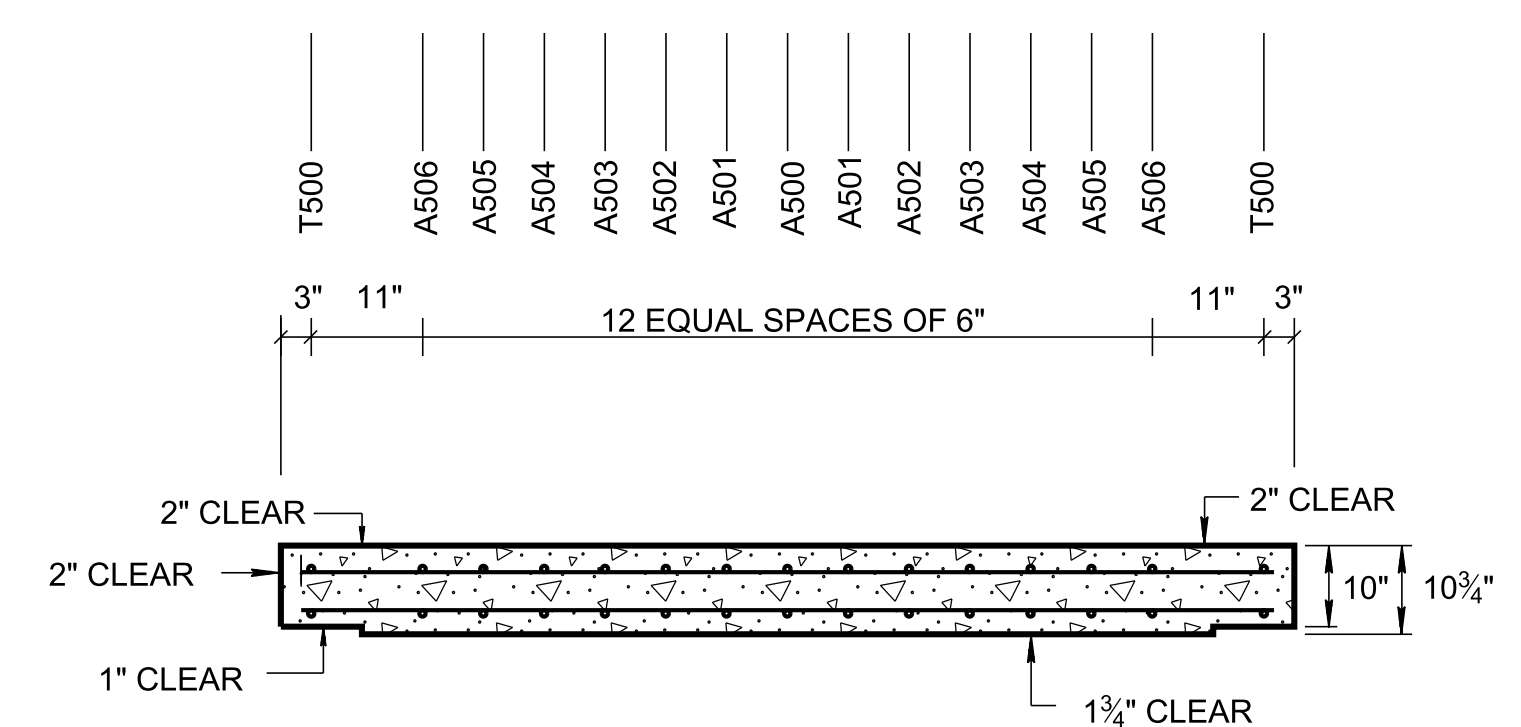


SECTION B-B

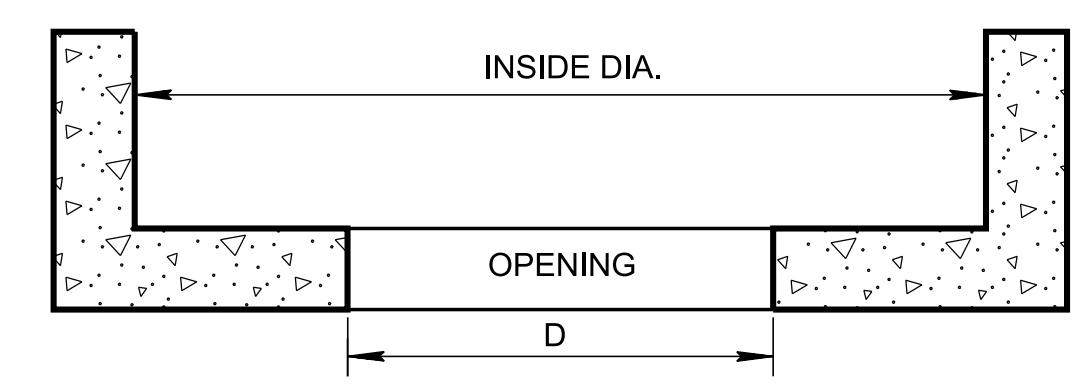


PLAN VIEW

SPRING BOX OPENING	
INSIDE DIA. (INCHES) (D)	
48	
60	
72	
84	
96	
108	
120	



SECTION A-A
SPECIAL LID DETAIL
FOR ROUND JUNCTION BOXES AND SPRING BOX



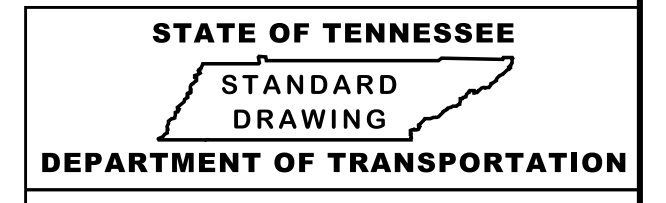
SECTION C-C
ROUND SPRING BOX BOTTOM SLAB DETAIL

JUNCTION BOX AND SPRING BOX SECTION TABLE		
INSIDE DIA. (INCHES)	LID DIA. (INCHES)	REFERENCE CATCH BASIN DRAWING (B)
48	58	D-CB-12RA
60	72	D-CB-12RB
72	86	D-CB-12RB
84	100	D-CB-12RC
96	114	D-CB-12RC
108	128	D-CB-12RC
120	142	D-CB-12RC

BILL OF STEEL FOR LID (INCHES)											
LID DIA.	T500	A500	A501	A502	A503	A504	A505	A506	A507	A508	A509
58	160X2	54X4	52 ³ / ₁₆ X8	48 ³ / ₁₆ X8	41 ¹ / ₂ X8	28 ⁹ / ₁₆ X8					
72	204X2	68X4	67X8	63 ³ / ₁₆ X8	58 ³ / ₁₆ X8	49 ⁹ / ₁₆ X8					
86	248 ³ / ₁₆ X2	82X4	81 ³ / ₁₆ X8	78 ³ / ₁₆ X8	74 ¹ / ₁₆ X8	67 ³ / ₁₆ X8	57 ⁹ / ₁₆ X8				
100	292 ¹ / ₂ X2	96X4	95 ¹ / ₄ X8	93 ¹ / ₁₆ X8	89 ¹ / ₄ X8	83 ³ / ₁₆ X8	76X8	65 ³ / ₁₆ X8			
114	336 ¹ / ₂ X2	110X4	109 ³ / ₁₆ X8	107 ³ / ₁₆ X8	104 ¹ / ₈ X8	99 ³ / ₁₆ X8	92 ¹ / ₁₆ X8	84 ³ / ₁₆ X8	73X8		
128	380 ¹ / ₂ X2	124X4	123 ³ / ₁₆ X8	121 ³ / ₁₆ X8	118 ⁷ / ₁₆ X8	114 ³ / ₁₆ X8	109 ¹ / ₈ X8	101 ¹ / ₈ X8	92 ¹ / ₁₆ X8	80 ⁵ / ₁₆ X8	
142	424 ¹ / ₂ X2	138X4	137 ¹ / ₁₆ X8	135 ¹ / ₁₆ X8	133 ³ / ₁₆ X8	129 ³ / ₁₆ X8	124 ³ / ₁₆ X8	118 ³ / ₁₆ X8	110 ¹ / ₈ X8	100 ⁵ / ₁₆ X8	88 ¹ / ₁₆ X8

TABLE KEY	
LENGTH OF BARS	160 X 2
NUMBER OF BARS	

- GENERAL NOTES**
- (A) ROUND JUNCTION OR SPRING DRAIN BOXES TO BE BUILT USING STANDARD ROUND CATCH BASIN EXCEPT FOR LID AND SPRING DRAIN BOX BOTTOM SLAB.
 - (B) SEE REFERENCED CATCH BASIN STANDARD FOR ALL STRUCTURE DETAILS EXCEPT LID AND SPRING DRAIN BOX BOTTOM SLAB.
 - (C) SEE D-CB-99R FOR OTHER DETAILS AND PIPE OPENINGS.
 - (D) 100" DIA LID SHOWN, OTHER SIMILAR. SEE BILL OF STEEL FOR REQUIRED BARS. ADDITIONAL BARS TO BE ADDED AS REQUIRED BY BILL OF STEEL AT 6" SPACING C-C.



ROUND JUNCTION BOX SPRING DRAIN BOX

3/23/2020 9:22:15 AM C:\Users\jj00547\Desktop\10-102.00 Catch Basins and Manholes IP\102.01 Catch Basins IP\DCB99RB-20200220.DGN