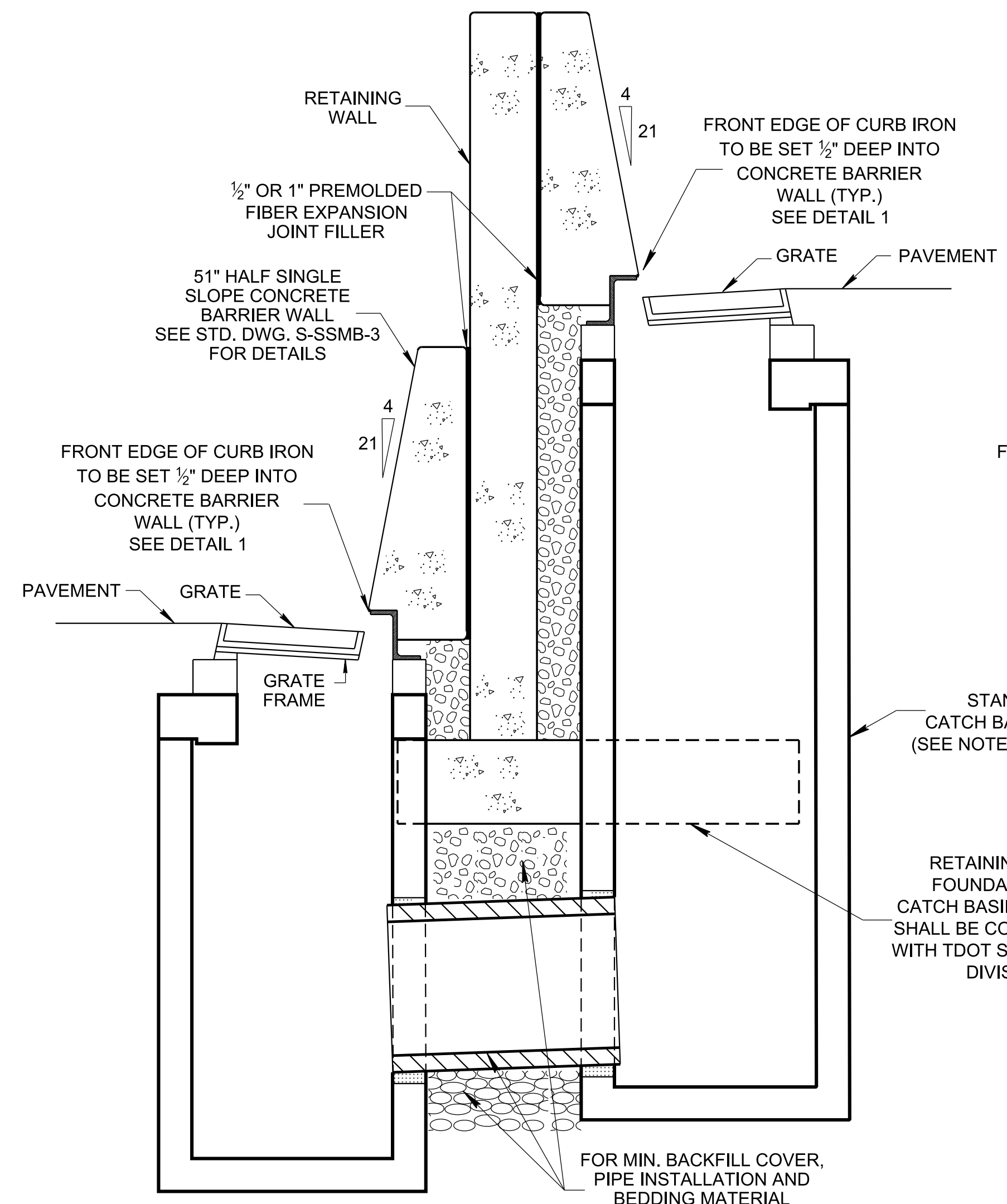
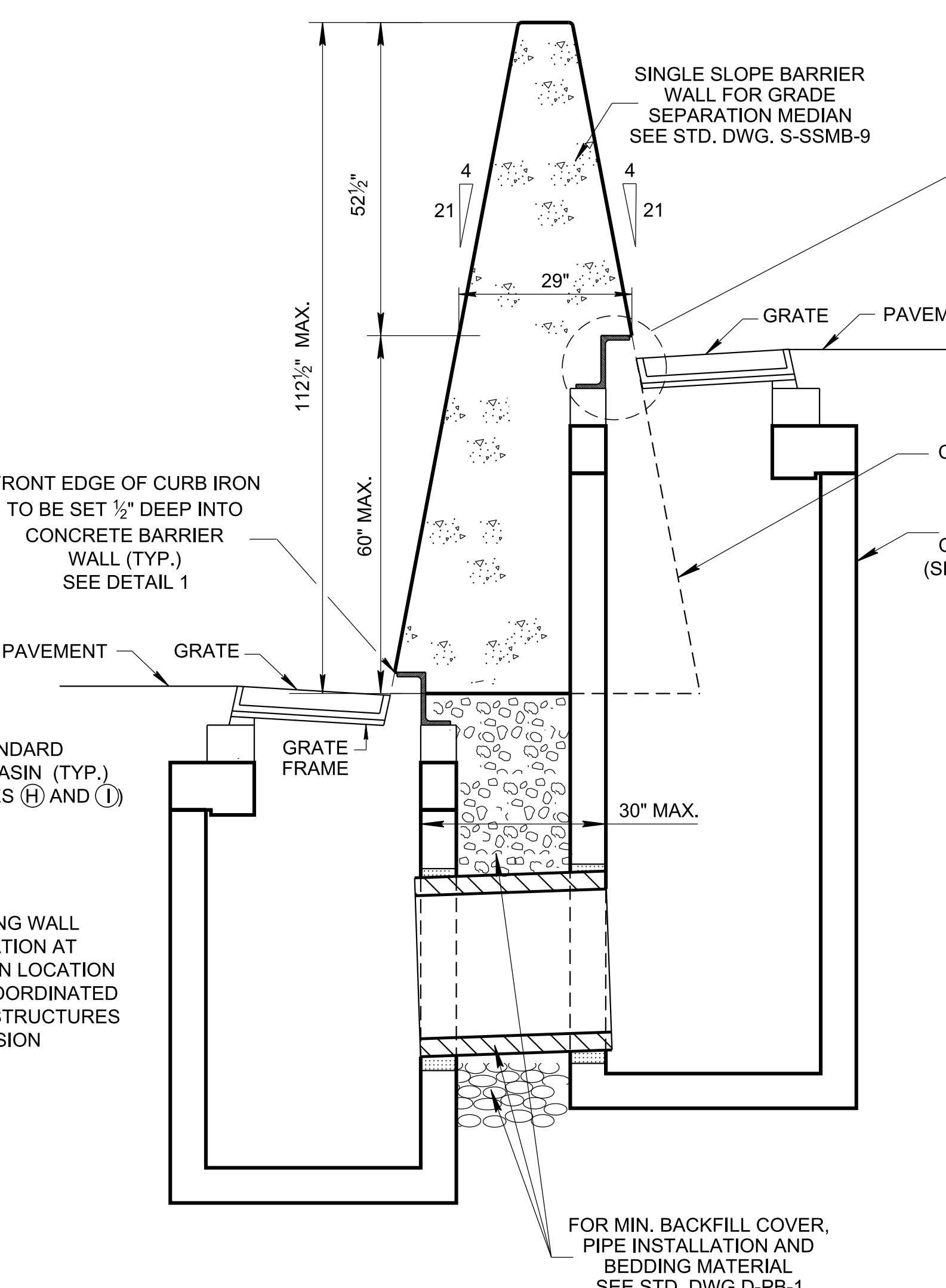


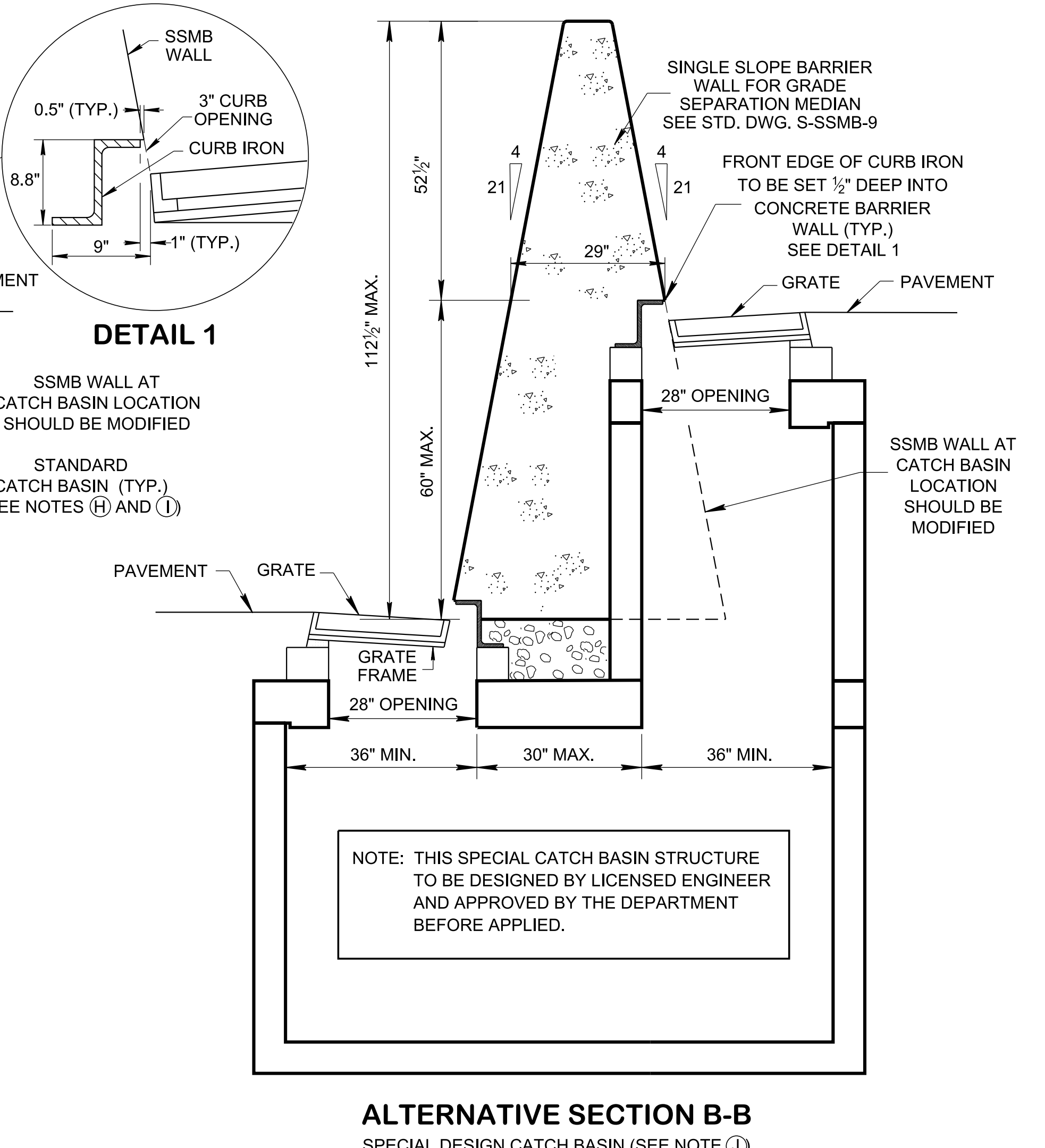
1/9/2024 10:02:07 AM  
 P:\StandDraw\DESIGN STANDARDS\Standards Drawings\Standard Roadway Drawings - CURRENT\In Progress\10-103.00 Catch Basins and Manholes\103.01 Catch Basins and Manholes\IPIDCB99GS-20240109.dgn



**SECTION A-A**

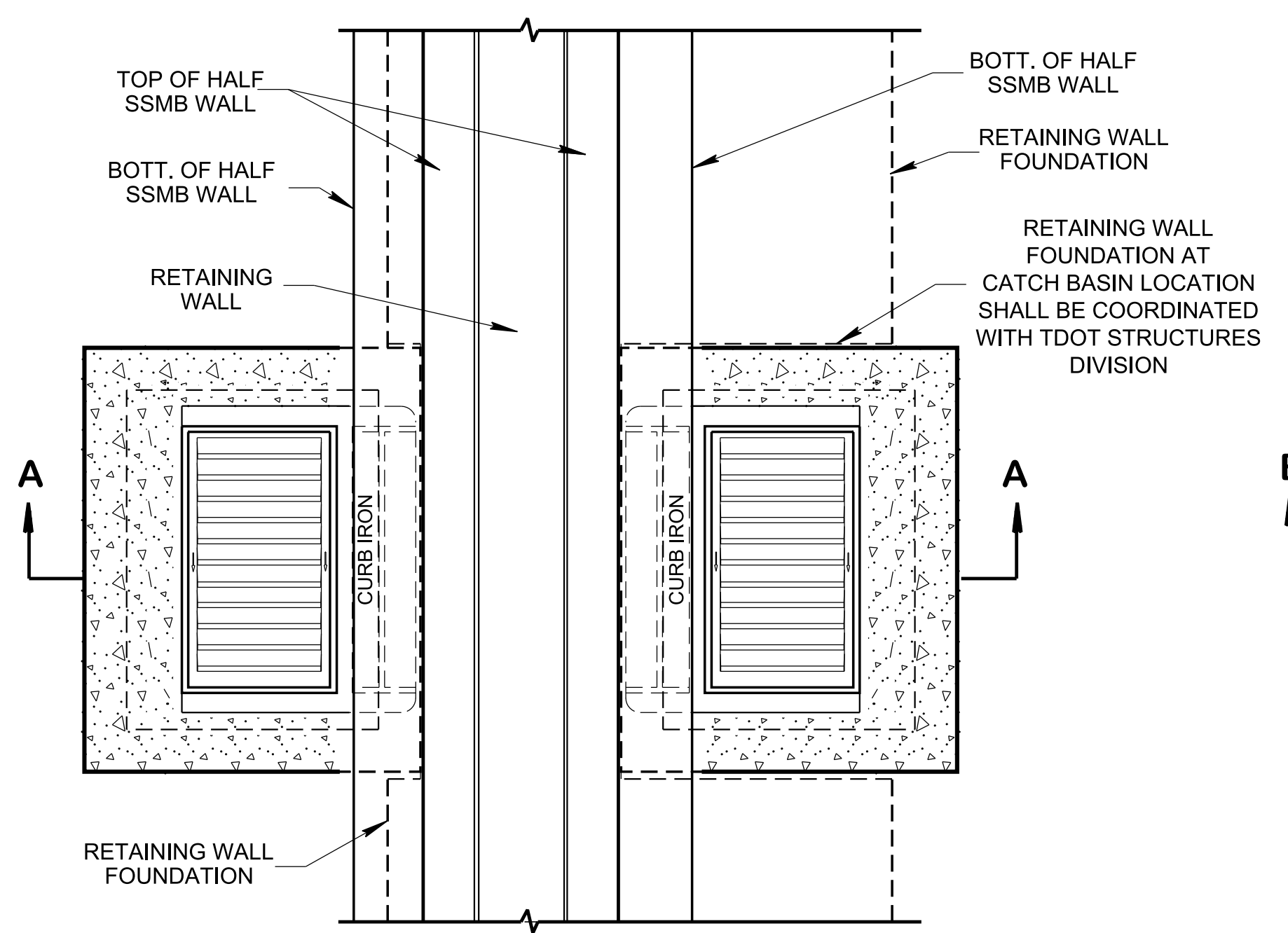


**SECTION B-B**

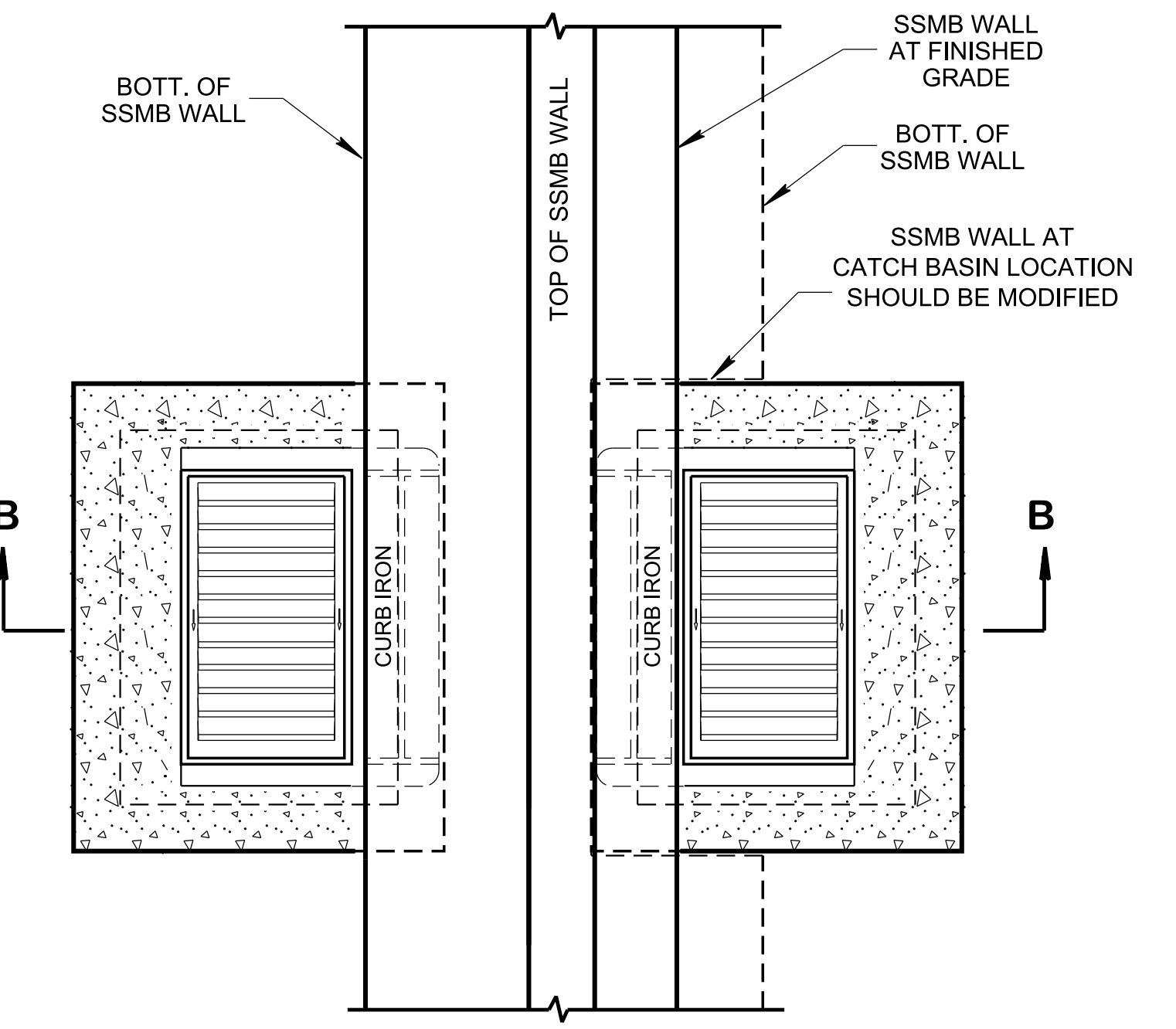


**ALTERNATIVE SECTION B-B**  
SPECIAL DESIGN CATCH BASIN (SEE NOTE J)

**DETAIL 1**



**PLAN VIEW FOR CATCH BASINS WITH RETAINING WALL**



**PLAN VIEW FOR CATCH BASINS WITH SSMB WALL**

**GENERAL NOTES**

- (A) CONCRETE BARRIER WALL SHALL BE CONSTRUCTED IN ACCORDANCE WITH STANDARD SPECIFICATIONS FOR ROAD AND BRIDGE CONSTRUCTION, SECTION 711 AND/OR CURRENT SPECIAL PROVISIONS.
- (B) REFER TO STANDARD DRAWINGS S-SSMB-9 FOR SINGLE SLOPE BARRIER WALL FOR GRADE SEPARATED MEDIAN, S-SSMB-3 FOR 51" HALF SINGLE SLOPE CONCRETE BARRIER WALL AND S-SSMB-5 FOR SINGLE SLOPE MEDIAN BARRIER WALL CATCH BASIN DETAILS. IF GRADE SEPARATION IS LESS THAN 2', USE STANDARD 51" SINGLE SLOPE CONCRETE BARRIER WALL STANDARD DRAWING S-SSMB-2.
- (C) CAST-IN-PLACE CONCRETE CATCH BASINS SHALL BE CONSTRUCTED IN ACCORDANCE WITH STANDARD SPECIFICATIONS, SECTION 611 AND/OR SPECIAL PROVISIONS UNLESS SUPERSEDED BY THIS DRAWING. THE CONTRACTOR MAY, WITH PERMISSION FROM THE ENGINEER, SUBSTITUTE PRECAST CATCH BASINS FOR CAST-IN-PLACE CATCH BASINS PROVIDED THAT ALL PRECAST ELEMENTS MEET ASTM C913 (CURRENT EDITION) UNLESS SUPERSEDED BY THIS DRAWING.
- (D) THE FOLLOWING MATERIAL PROPERTIES ARE REQUIRED FOR BOTH CAST-IN-PLACE AND PRECAST STRUCTURES:  
 CONCRETE:  $f_c = 4,000$  POUNDS PER SQUARE INCH AT 28 DAYS  
 REINFORCING STEEL: ASTM A615,  $F_y = 60,000$  POUNDS PER SQUARE INCH  
 ALL REINFORCING IS TO BE INSTALLED AS DETAILED ON THIS DRAWING.
- (E) ALTERNATIVE CATCH BASIN JOINT DETAILS MAY BE ACCEPTABLE. SEE STANDARD DRAWING D-CB-99 FOR ADDITIONAL DETAILS.
- (F) SEE ROADWAY PLANS DRAINAGE TABULATION FOR PIPE INLET AND OUTLET ELEVATIONS. IF NEEDED, INVERT ELEVATIONS MAY BE ADJUSTED AS DIRECTED BY THE ENGINEER IN ORDER TO ACCOMMODATE INLET AND OUTLET PIPES.
- (G) FOR CASES WHERE THE OUTLET PIPE DIAMETER IS LARGER THAN THE INLET PIPE DIAMETER, A MINIMUM 23 INCH DEPTH SHALL BE MAINTAINED ABOVE THE OUTLET PIPE.
- (H) REFER TO STANDARD DRAWINGS D-CB-41 SERIES FOR STANDARD CATCH BASIN FOR USE UNDER CONCRETE MEDIAN BARRIER WALL, AND D-CB-51 SERIES STANDARD CATCH BASIN FOR USE IN FRONT OF CONCRETE RETAINING WALL.
- (I) PAYMENT BASED ON MEASUREMENT DEPTH MADE FROM TOP OF GRATE TO THE BOTTOM SLAB. PAYMENT INCLUDES RISER SECTION AND GRATE. PAYMENT FOR CATCH BASIN WILL BE MADE UNDER ITEM NUMBER:  
 611-90.01 CATCH BASINS, (TYPE \_\_\_\_\_' DEPTH) EACH
- (J) PAYMENT FOR SPECIAL DESIGN CATCH BASIN AT GRADE SEPARATION WILL BE MADE AS FOLLOWS:  
 604-01.02 STEEL BAR REINFORCEMENT (ROADWAY) LB.  
 604-03.31 CLASS D CONCRETE (DESCRIPTION) C.Y.  
 611-03.04 GRAY IRON CASTINGS (CATCH BASIN) LB.

NOTE: THIS SPECIAL CATCH BASIN STRUCTURE TO BE DESIGNED BY LICENSED ENGINEER AND APPROVED BY THE DEPARTMENT BEFORE APPLIED.

**STATE OF TENNESSEE**  
 STANDARD  
 DRAWING  
**DEPARTMENT OF TRANSPORTATION**  
  
**CATCH BASIN  
 DETAILS FOR  
 GRADE SEPARATION  
 WALL**