

| CATCH BASIN DIMENSIONS | | | | FOR DESIGN USE ONLY CATCH BASIN MINIMUM DESIGN DEPTH (FEET) |
|--------------------------------------|------------------------------|------------------------------------|--------------------------------------|--|
| INSIDE DIAMETER (D) OF PIPE (INCHES) | PIPE WALL THICKNESS (INCHES) | DIAMETER OF CUT-OUT HOLES (INCHES) | BOX SECTION MINIMUM HEIGHTS (INCHES) | |
| 18 | 2½ | 25 | 42¾ | 3.77 |
| 24 | 3 | 32 | 49¾ | 4.31 |

- ① CUT-OUT HOLES BASED ON REINFORCED CONCRETE PIPE ITH WALL TYPE "B".
- ② ALL FLEXIBLE PIPE MATERIALS REQUIRE GASKET. SEE STANDARD DRAWING D-PB-2.
- ③ CUT-OUT HOLES FOR PRECAST STRUCTURES TO BE FORMED IN ORDER TO OBTAIN A SMOOTH EDGED HOLE. SCORED OR ETCHED HOLES WITH REINFORCING STEEL LEFT UN-CUT WILL NOT BE PERMITTED.
- ④ THE SUM OF BOX SECTION HEIGHT & RISER SECTION HEIGHT SHALL NOT EXCEED 61".

REV. 5-27-99: MODIFIED CATCH BASIN MINIMUM DEPTH TABLE. CHANGED PRECAST CONCRETE SPECIFICATION. ADDED CATCH BASIN MAXIMUM DEPTH REQUIREMENT NOTE.

REV. 7-29-99: MODIFIED REINFORCING STEEL.

REV. 12-18-00: CHANGED DRAWING NO. FROM D-CB-41SA TO D-CB-41LP.

REV. 5-27-01: CHANGED PAY ITEMS IN GENERAL NOTE ④.

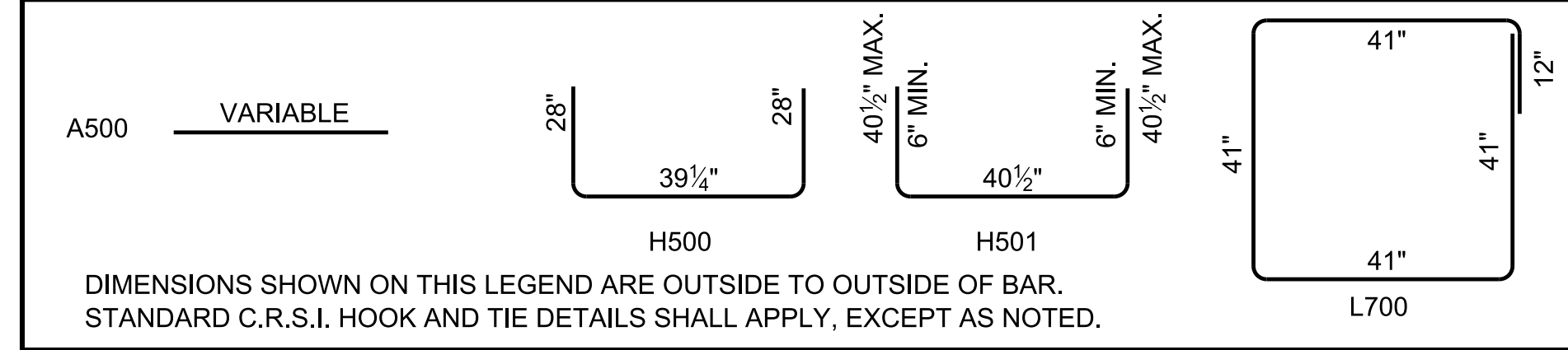
REV. 7-29-04: CHANGED GENERAL NOTE ①

REV. 8-01-12: REVISED CATCH BASIN FOR COMPLIANCE WITH AASHTO LRFD BRIDGE DESIGN SPECIFICATIONS, 4TH EDITION WITH INTERIMS. REVISED REINFORCING, GENERAL NOTES, LEGEND AND ADDITIONAL MISC. DRAFTING EDITS.

REV. 05-15-18: REVISED CATCH BASIN MINIMUM DESIGN DEPTH VALUES. CORRECTED STANDARD SPECIFICATIONS SECTION NUMBER TO 921 FOR NON-SHRINK GROUT. ADDED DIMENSION IN SECTION VIEW A-A FOR MINIMUM DESIGN DEPTH.

REV. 02-20-2020: REDREW SHEET.

REINFORCING STEEL LEGEND

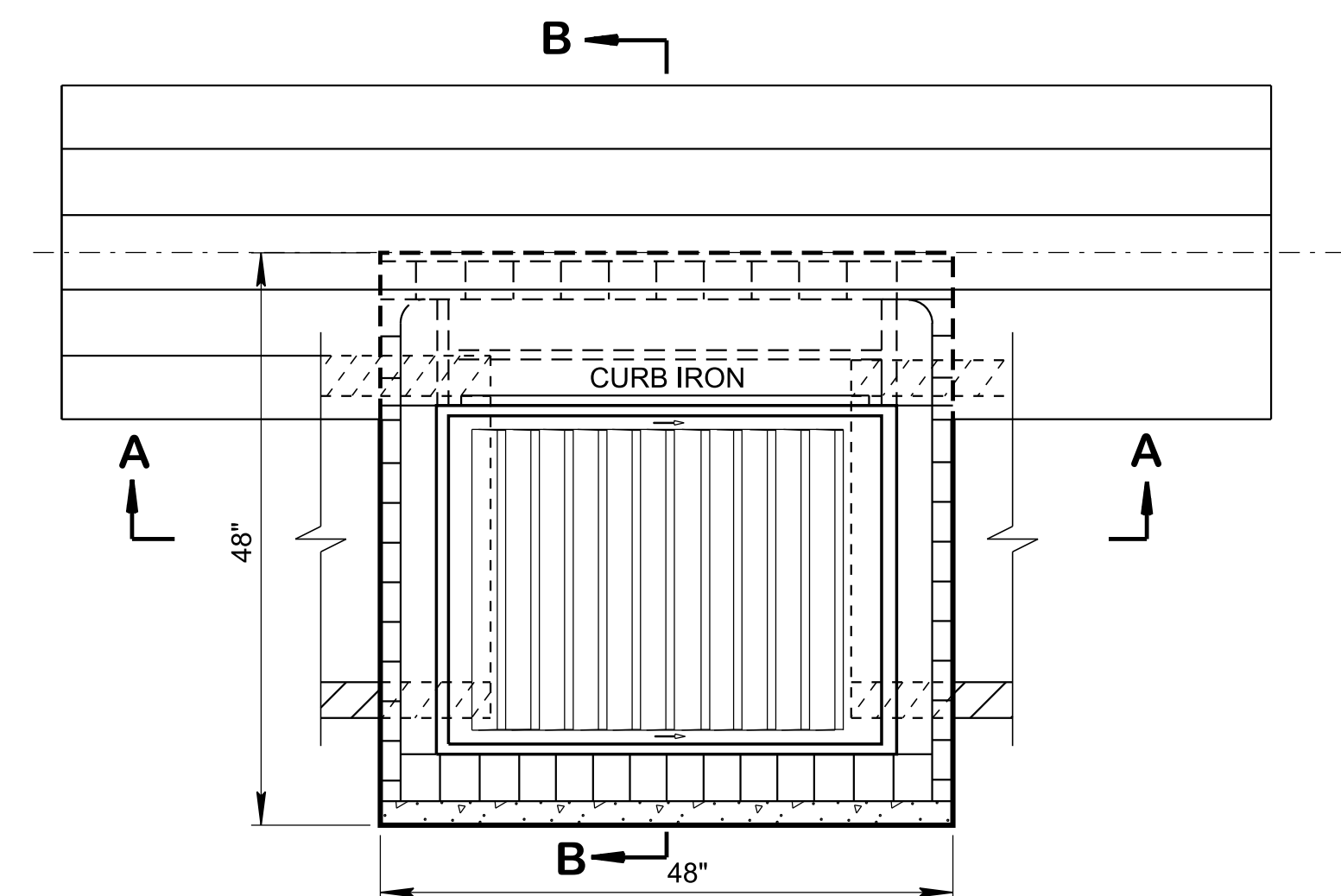


GENERAL NOTES

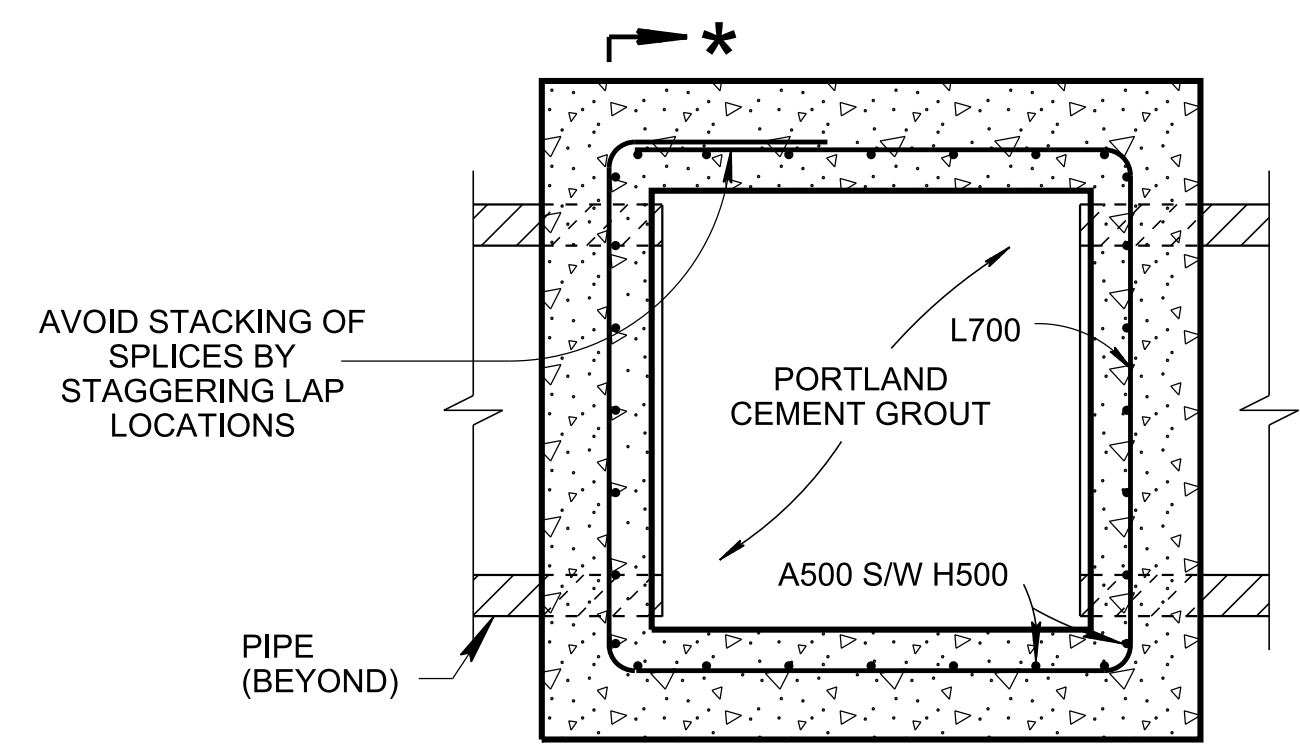
- (A) DRAWING TO BE USED FOR ALL CAST-IN-PLACE NO. 41LP (LOW PROFILE) AND ALL PRECAST NO. 41LP (LOW PROFILE) CONCRETE CATCH BASINS. SEE STANDARD DRAWING D-CB-99 FOR ADDITIONAL CONSTRUCTION NOTES & DETAILS.
- (B) THIS DIMENSION MAY VARY FROM A MINIMUM OF 0 INCHES TO A MAXIMUM OF 9 INCHES AS LONG AS 22 INCHES IS SATISFIED. THE CONTRACTOR HAS THE OPTION OF USING BRICK OR STANDARD PRECAST CONCRETE RISER FRAMES. THE USE OF BRICK SHALL BE LIMITED TO 6 INCHES. IF THIS DIMENSION EXCEEDS 6 INCHES, PRECAST CONCRETE RISER FRAMES SHALL BE USED AS SHOWN ON STANDARD DRAWING D-RF-1.
- (C) CAST-IN-PLACE CONCRETE CATCH BASINS SHALL BE CONSTRUCTED IN ACCORDANCE WITH STANDARD SPECIFICATIONS, SECTION 611 AND/OR SPECIAL PROVISIONS UNLESS SUPERSEDED BY THIS DRAWING. THE CONTRACTOR MAY, WITH PERMISSION FROM THE ENGINEER, SUBSTITUTE PRECAST CATCH BASINS FOR CAST-IN-PLACE CATCH BASINS PROVIDED THAT ALL PRECAST ELEMENTS MEET ASTM C913 (CURRENT EDITION) UNLESS SUPERSEDED BY THIS DRAWING.
- (D) THE FOLLOWING MATERIAL PROPERTIES ARE REQUIRED FOR BOTH CAST-IN-PLACE AND PRECAST STRUCTURES:

 CONCRETE: $f_c = 4,000$ POUNDS PER SQUARE INCH AT 28 DAYS
 REINFORCING STEEL: ASTM A615, $F_y = 60,000$ POUNDS PER SQUARE INCH
 ALL REINFORCING IS TO BE INSTALLED AS DETAILED ON THIS DRAWING.
- (E) PRECAST CATCH BASIN UNITS WHICH ARE DAMAGED DURING SHIPMENT OR INSTALLATION WILL BE REJECTED. IT SHALL BE THE RESPONSIBILITY OF THE CONTRACTOR TO REPLACE DAMAGED CATCH BASIN UNITS AT THEIR OWN EXPENSE.
- (F) APPROPRIATE SIZING AND LOCATION OF LIFTING DEVICES SHALL BE THE RESPONSIBILITY OF THE FABRICATOR.
- (G) THE CONTRACTOR IS TO PATCH ALL LIFTING DEVICE HOLES WITH GROUT AND PLACE A MINIMUM OF ONE (1) INCH OF COVER OVER THE HARDWARE OF THESE DEVICES ON BOTH TOP AND BOTTOM SURFACES.
- (H) SEE ROADWAY PLANS DRAINAGE TABULATION FOR PIPE INLET AND OUTLET ELEVATIONS. IF NEEDED, INVERT ELEVATIONS MAY BE ADJUSTED AS DIRECTED BY THE ENGINEER IN ORDER TO ACCOMMODATE INLET AND OUTLET PIPES.
- (I) FOR CASES WHERE THE OUTLET PIPE DIAMETER IS LARGER THAN THE INLET PIPE DIAMETER, A MINIMUM 22 INCH DEPTH SHALL BE MAINTAINED ABOVE THE OUTLET PIPE.
- (J) SEE STANDARD DRAWING D-CBB-31 FOR DETAILS REGARDING CAST IRON GRATES, FRAMES AND CURB INLETS.
- (K) THE CONTRACTOR MAY ELIMINATE THE A500 BARS BY LENGTHENING THE VERTICAL LEG OF THE H500 BARS SO THAT 2 INCHES OF CLEAR COVER IS PROVIDED AT THE TOP OF THE STRUCTURE.
- (L) PAY DEPTH MEASUREMENT MADE FROM TOP OF GRATE TO OUTLET FLOW ELEVATION. PAYMENT INCLUDES RISER SECTION AND GRATE. PAYMENT FOR CATCH BASIN WILL BE MADE UNDER ITEM NUMBERS:

 611-41.01, CATCH BASINS, TYPE 41, 0'-4" DEPTH, EACH,
 611-41.02, CATCH BASINS, TYPE 41, > 4'-8" DEPTH, EACH.



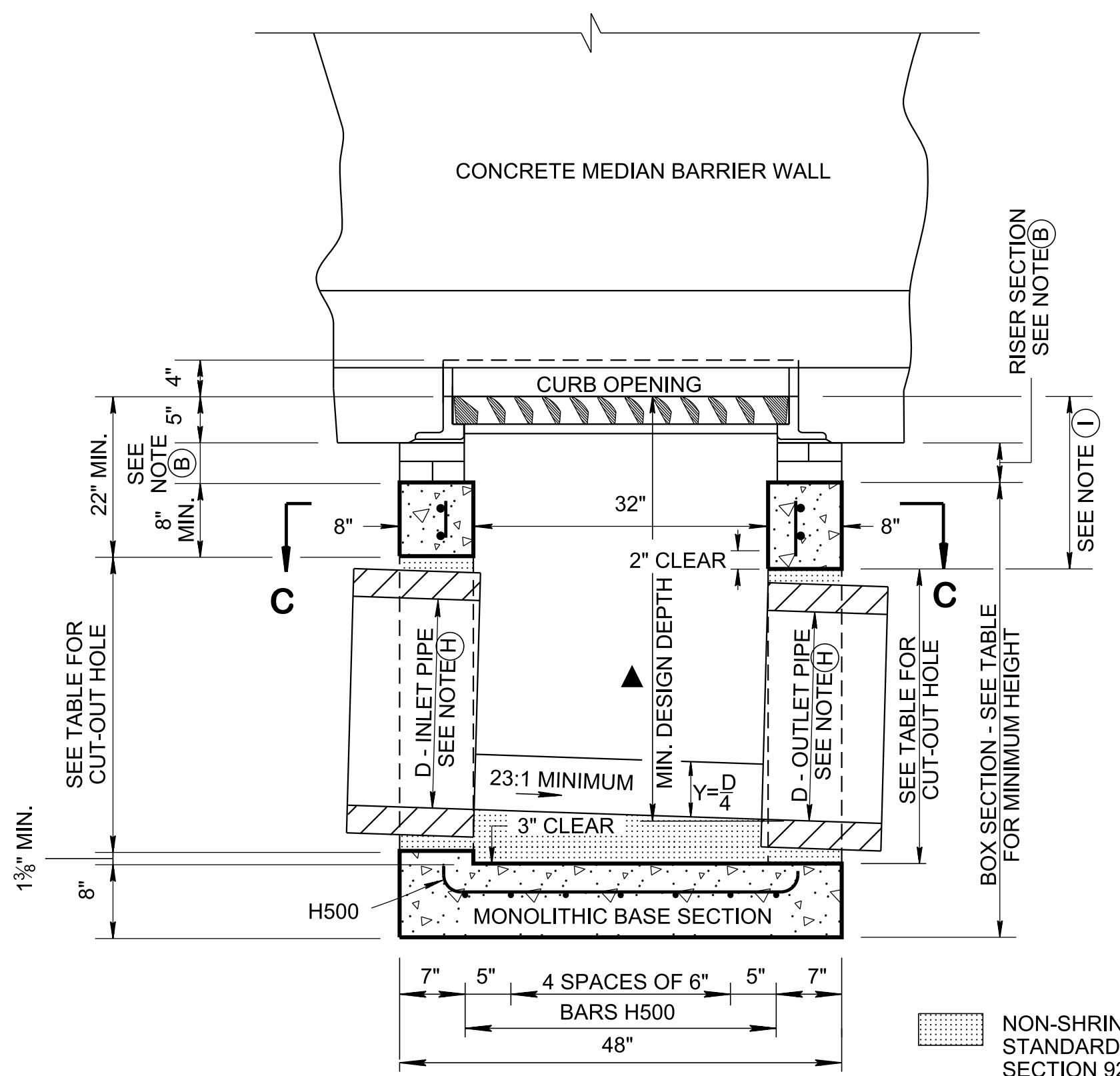
PLAN VIEW



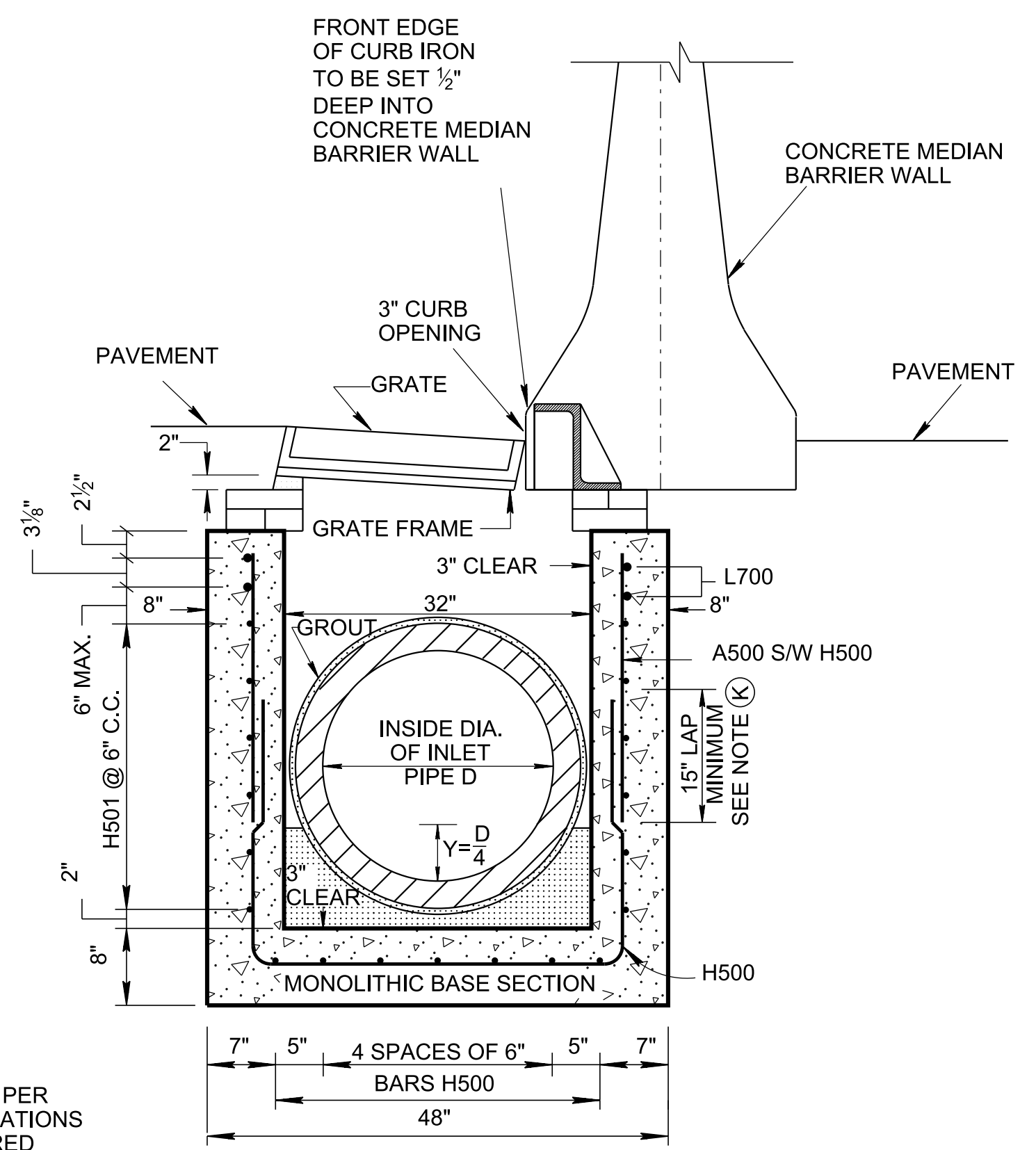
SECTION C-C

SECTION *-*

ELEV. VIEW IS PROVIDED ON STANDARD DRAWING D-CB-99 SHOWING REINFORCEMENT REQUIREMENTS AROUND PIPE OPENINGS



SECTION A-A



SECTION B-B

3/23/2020 9:04:01 AM C:\Users\jj00547\Desktop\10-102.00 Catch Basins and Manholes IP\102.01 Catch Basins IP\DCB41LP-20200220.DGN

NOT TO SCALE

APPROVED BY FHWA (ALL OTHERS APPROVED BY TDOT)

STATE OF TENNESSEE
STANDARD DRAWING
DEPARTMENT OF TRANSPORTATION

**LOW PROFILE
32" X 32' SQUARE
CONCRETE NO. 41LP
CATCH BASIN**
(FOR USE UNDER CONCRETE MEDIAN BARRIER WALL)