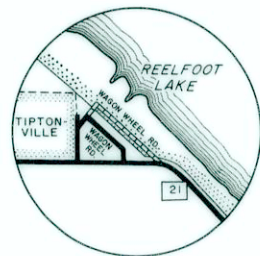
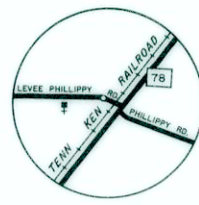


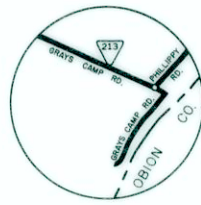
REELFOOT
1



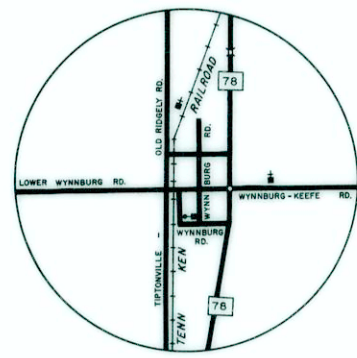
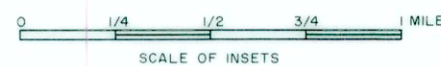
AREA E. OF TIPTONVILLE
2



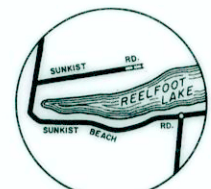
PHILLIPPY
3



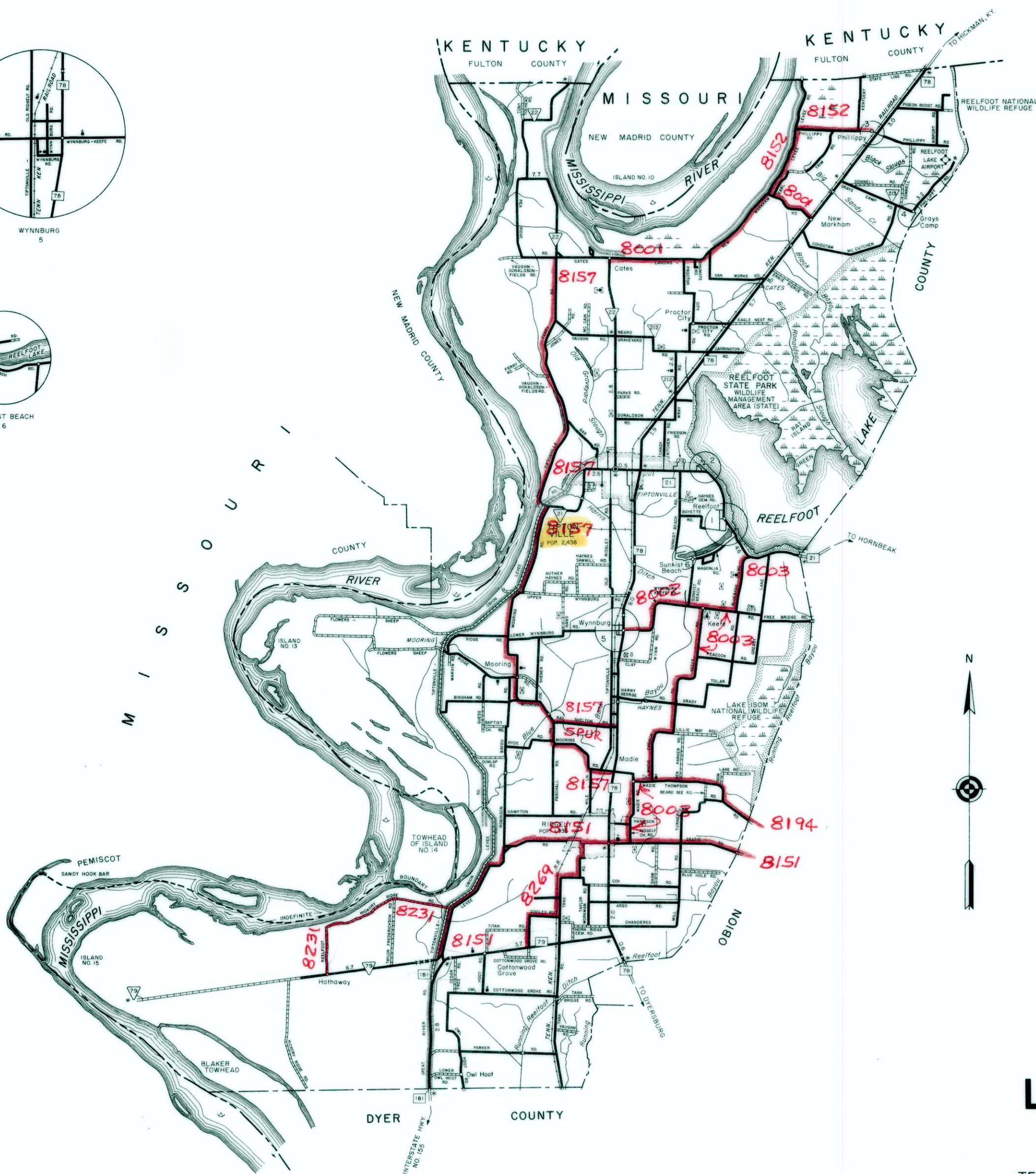
GRAYS CAMP
4



WYNNBURG
5

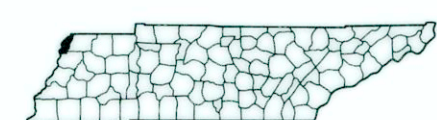


SUNKIST BEACH
6



- LEGEND**
- SCHOOL
 - CHURCH
 - CHURCH WITH CEMETERY
 - CEMETERY
 - POST OFFICE
 - HOSPITAL
 - TOWN HALL OR COMMUNITY CENTER
 - HIGHWAY PATROL STATION
 - HIGHWAY GARAGE (S-STATE, C-COUNTY)
 - WEIGHT STATION
 - AIRPORT, COMPLETE FACILITIES
 - AIRPORT, LIMITED FACILITIES
 - LANDING AREA OR STRIP
 - TRIANGULATION STATION
 - OBSERVATION OR LOOKOUT TOWER
 - COUNTY SEAT
 - OTHER CITIES AND VILLAGES
 - POWER PLANT
 - RADIO OR TELEVISION STATION
 - DOT TO INDICATE LOCATION OF ANY CULTURAL FEATURE OUT OF PLACE
 - INTERSTATE HIGHWAY MARKER
 - U.S. NUMBERED HIGHWAY MARKER
 - STATE HIGHWAY MARKER (FEDERAL AID PRIMARY SYSTEM)
 - STATE HIGHWAY MARKER (FEDERAL AID SECONDARY SYSTEM)
 - PROMINENT PEAK WITH ELEVATION
 - LAKE WITH DAM
 - RESERVOIR, POND OR LAKE
 - LEVEE OR DYKE
 - DRAINAGE CANAL
 - NARROW STREAM
 - WIDE STREAM
 - DAM WITH LOCK
 - HEAD OF NAVIGATION
 - NAVIGABLE STREAM
 - RAILROAD STATION
 - GRADE CROSSING
 - UNDERPASS ROAD BELOW
 - OVERHEAD ROAD ABOVE
 - RAILROAD TUNNEL
 - HIGHWAY GRADE SEPARATION
 - HIGHWAY BRIDGE OVER 20 FEET
 - FORD
 - LOW WATER BRIDGE
 - FREE FERRY OR TOLL FERRY
 - HIGHWAY BRIDGE LONG RIVER CROSSING (CONCRETE, STEEL, WOOD)
 - PRIMITIVE OR UNIMPROVED ROAD
 - GRADED AND DRAINED ROAD
 - SOIL, GRAVEL OR STONE SURFACED ROAD
 - PAVED ROAD
 - DIVIDED HIGHWAY
 - DISTANCE IN MILES BETWEEN DESIGNATED POINTS (FCA)
 - FULL CONTROL OF ACCESS (NPS)
 - NATIONAL PARK SERVICE HIGHWAY
 - HIGHWAY INTERCHANGE
 - COUNTY LINE
 - STATE LINE
 - MONUMENTED BOUNDARY MARKER
 - INCORPORATED CITY BOUNDARY
 - RESERVATION BOUNDARY

FEDERAL AID SECONDARY ROUTES SHOWN IN RED ARE BASED ON SYSTEM ROUTE INFORMATION CIRCA 1976, THE YEAR THE PROGRAM ENDED.



GENERAL HIGHWAY MAP LAKE COUNTY TENNESSEE

PREPARED BY THE
TENNESSEE DEPARTMENT OF TRANSPORTATION
BUREAU OF PLANNING AND DEVELOPMENT
PLANNING DIVISION
IN COOPERATION WITH THE
U.S. DEPARTMENT OF TRANSPORTATION
FEDERAL HIGHWAY ADMINISTRATION



1989

MAP RECORD	
FIELD DATA OBTAINED IN 1987	
FIELD EXAMINATION MADE IN 1989	
REVISIONS	DATE
FEATURE	DATE

POLYCONIC PROJECTION

1 COUNTY MAP SHEET WITH
2 SUPPLEMENTAL CITY MAP SHEETS
RIDGELY
TIPTONVILLE

POPULATION OF LAKE COUNTY
7,455 (1980 CENSUS)

THE COUNTY COMMISSION HAS REVIEWED
AND ADOPTED THIS GENERAL HIGHWAY MAP AS
THE OFFICIAL MAP FOR THE COUNTY BY RESOLUTION

AUTHORIZATION NO. 4090894800