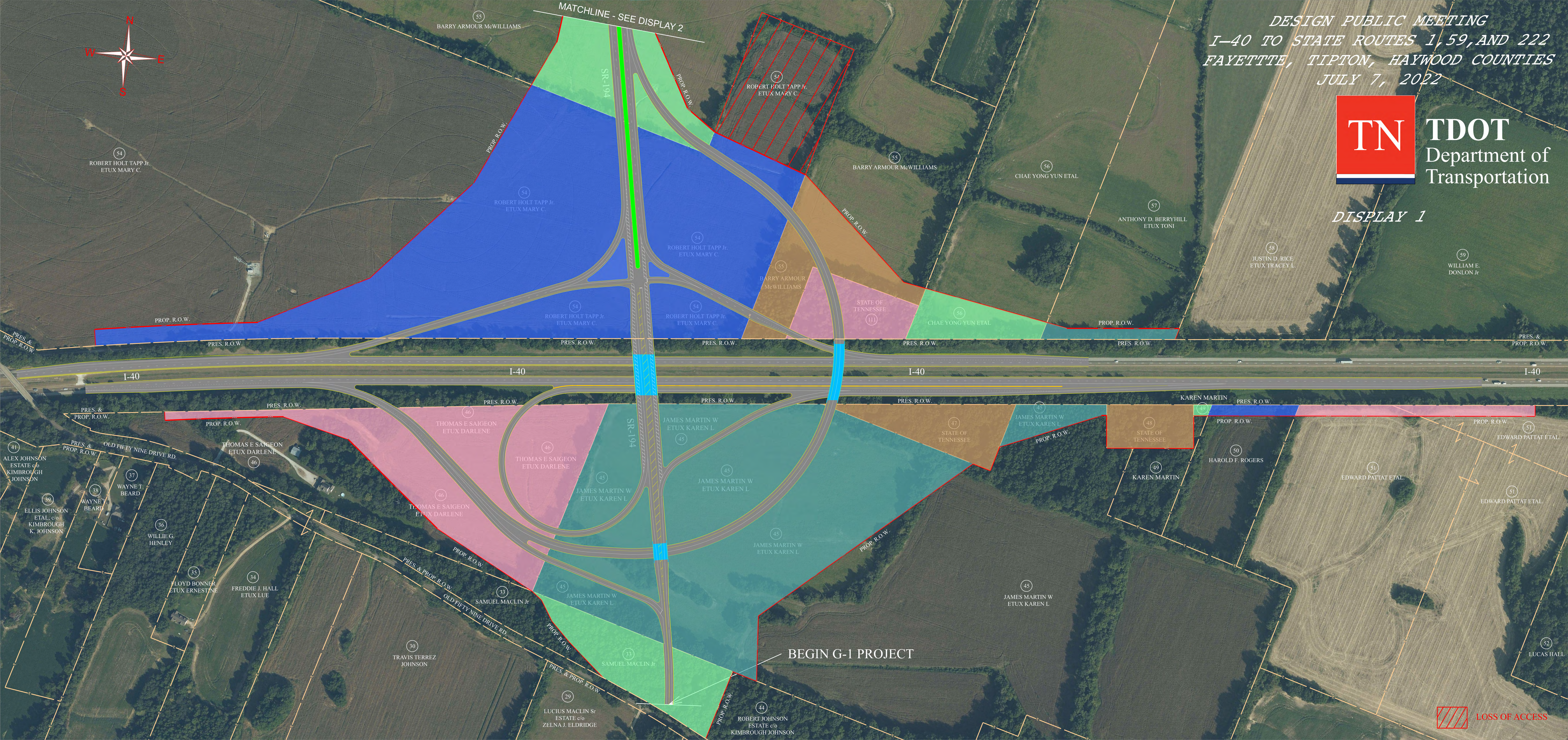


DESIGN PUBLIC MEETING
I-40 TO STATE ROUTES 1, 59, AND 222
FAYETTE, TIPTON, HAYWOOD COUNTIES
JULY 7, 2022



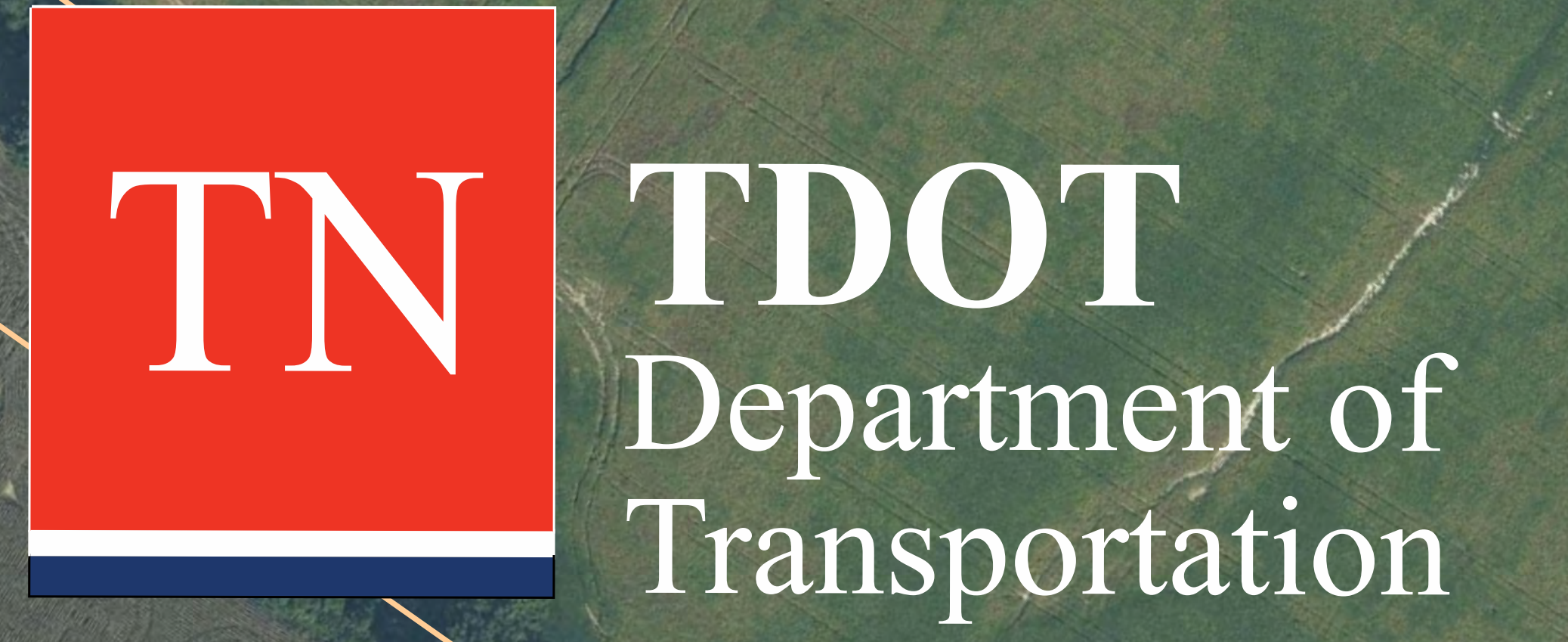
DISPLAY 1



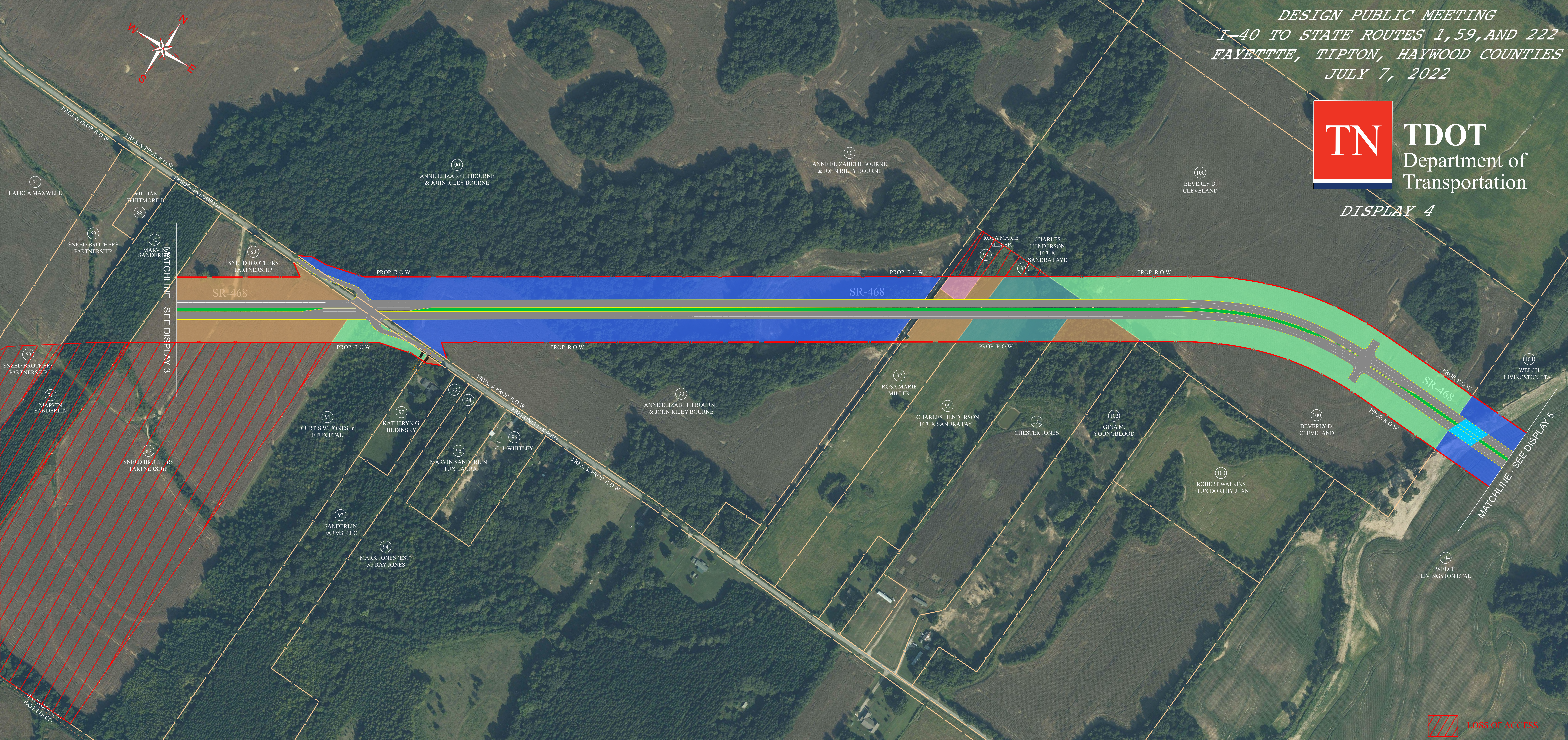


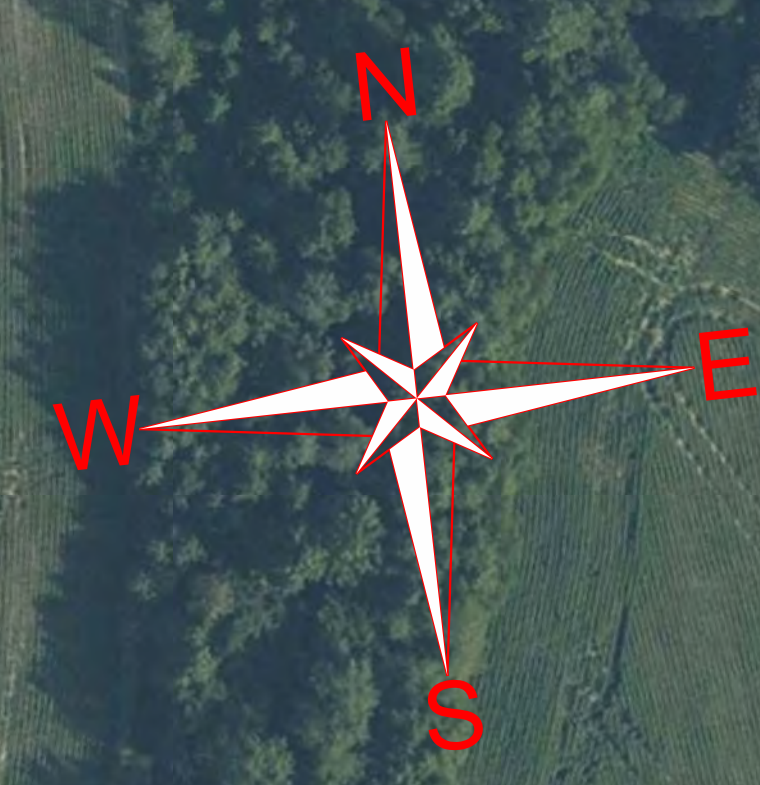
DISPLAY 3

DESIGN PUBLIC MEETING
I-40 TO STATE ROUTES 1, 59, AND 222
FAYETTE, TIPTON, HAYWOOD COUNTIES
JULY 7, 2022



DISPLAY 4





MATCHLINE - SEE DISPLAY 4

MATCHLINE - SEE DISPLAY 6

104
WELCH LIVINGSTON ETAL

105
STATE OF TENNESSEE
WM SNODGRASS TOWER 22ND FL

105
STATE OF TENNESSEE
WM SNODGRASS TOWER 22ND FL

105
STATE OF TENNESSEE
WM SNODGRASS TOWER 22ND FL

105
STATE OF TENNESSEE
WM SNODGRASS TOWER 22ND FL

104
WELCH LIVINGSTON ETAL

105
STATE OF TENNESSEE
WM SNODGRASS TOWER 22ND FL

105
STATE OF TENNESSEE
WM SNODGRASS TOWER 22ND FL

104
WELCH LIVINGSTON ETAL

106
SNEED BROTHERS
PARTNERSHIP

107
GROVER HARWELL
ETUX, FLOZELL

108
CHRISTER LEE WILLIAMS
ETAL, SHIRLEY ANN WILLIAMS

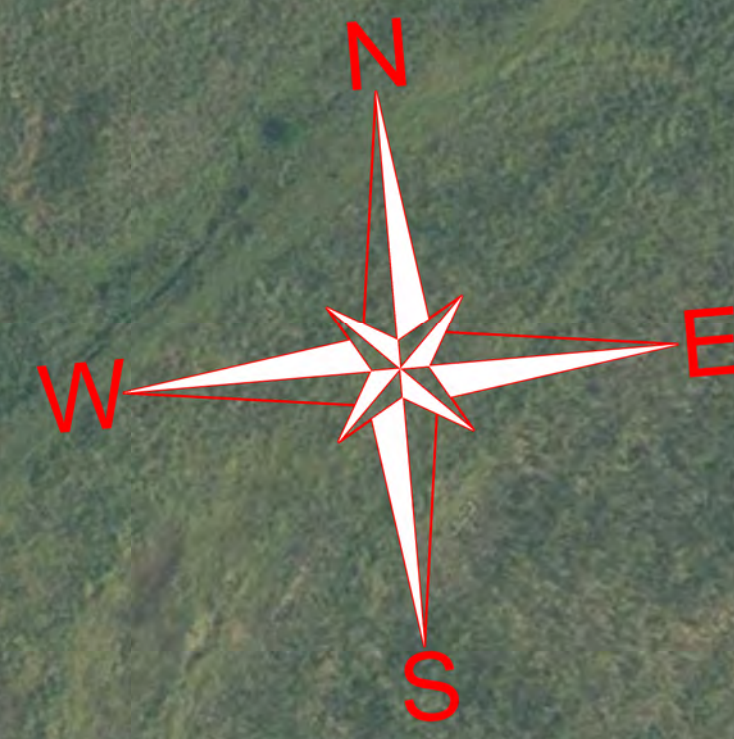
*DESIGN PUBLIC MEETING
I-40 TO STATE ROUTES 1, 59, AND 222
FAYETTE, TIPTON, HAYWOOD COUNTIES
JULY 7, 2022*



TDOT
Department of
Transportation



DISPLAY 5



(105)
STATE OF TENNESSEE
WM SNODGRASS TOWER 22ND FL

(105)
STATE OF TENNESSEE
WM SNODGRASS TOWER 22ND FL

(105)
STATE OF TENNESSEE
WM SNODGRASS TOWER 22ND FL

(105)
STATE OF TENNESSEE
WM SNODGRASS TOWER 22ND FL

(105)
STATE OF TENNESSEE
WM SNODGRASS TOWER 22ND FL

(105)
STATE OF TENNESSEE
WM SNODGRASS TOWER 22ND FL

(105)
STATE OF TENNESSEE
WM SNODGRASS TOWER 22ND FL

(105)
STATE OF TENNESSEE
WM SNODGRASS TOWER 22ND FL

(100)
STUART LEGACY
PROPERTIES LP
c/o PHILLIP STUART

(110) HAYWOOD COUNTY

(110) HAYWOOD COUNTY

MATCHLINE - SEE DISPLAY 5

PROP. R.O.W. SR-468

PROP. R.O.W.

PROP. R.O.W.

PROP. R.O.W.

PROP. R.O.W.

SR-468

PROP. R.O.W.

STANTON SOMERVELL RD.
PRES. & PROP. R.O.W.

STANTON SOMERVELL RD.
PRES. & PROP. R.O.W.

PRES. & PROP. R.O.W.

SR-222

PRES. & PROP. R.O.W.

SR-222
PRES. & PROP. R.O.W.

DESIGN PUBLIC MEETING
I-40 TO STATE ROUTES 1, 59, AND 222
FAYETTE, TIPTON, HAYWOOD COUNTIES
JULY 7, 2022



TDOT
Department of
Transportation

DISPLAY 6



LOSS OF ACCESS