

## REMEMBER...

## Your comments are very important to us!

How to comment:

- Submit written comments on the provided comment cards
  - Fill out a comment card tonight
  - Take a comment card with you and mail it in within 21 days
  - Mail in a letter with your comments within 21 days
- Provide verbal comments to the court reporter
- Comments will be included in the official record

### Notes:

---

---

---

---

---

---

---

---

---

---

---

---

---

---

---

---

---

---

---

---

---

---

---

### For more information, please contact:

Shane Hester, P.E., Director  
 TDOT, Region 3 Project Development  
 (615) 350-4300  
 Shane.Hester@tn.gov

Sharon Schutz P.E., C.E. Manager 2  
 TDOT, Region 3 Project Development  
 (615) 350-4250  
 Sharon.Schutz@tn.gov

# Design Public Meeting

Widening SR- 96, From East of SR-252 (Wilson Pike) to I-840

### Thank you for attending the State Route 96 Design Public Meeting!

This 5.5 mile project includes widening of SR-96 to four lanes with a center turn-lane extending from east of State Route 252 (Wilson Pike) to I-840 and includes widening SR-11 for approx. 0.65 miles through Triune.

This project is the second segment of the SR-96 corridor widening project between the cities of Franklin and Murfreesboro.

### Purpose of Meeting

- Discuss proposed SR-96 widening from SR-252 to I-840, Including SR-11 widening through Triune
- Provide preliminary plans for public review
- Receive input from the public
  - Comment cards
  - Court Reporter
- Answer questions and address concerns

### Purpose & Need of Project

The primary purpose of the project is to improve local and regional mobility by improving traffic flow on SR-96 between the cities of Franklin and Murfreesboro.

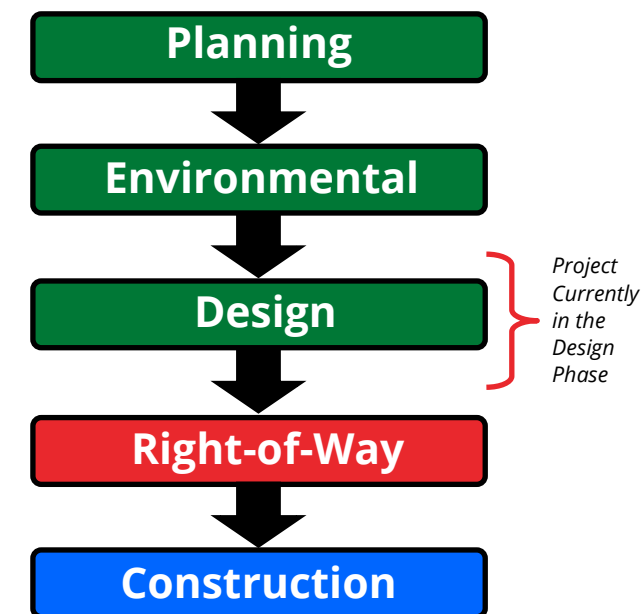
This project will address safety, traffic congestion, and geometric deficiencies.

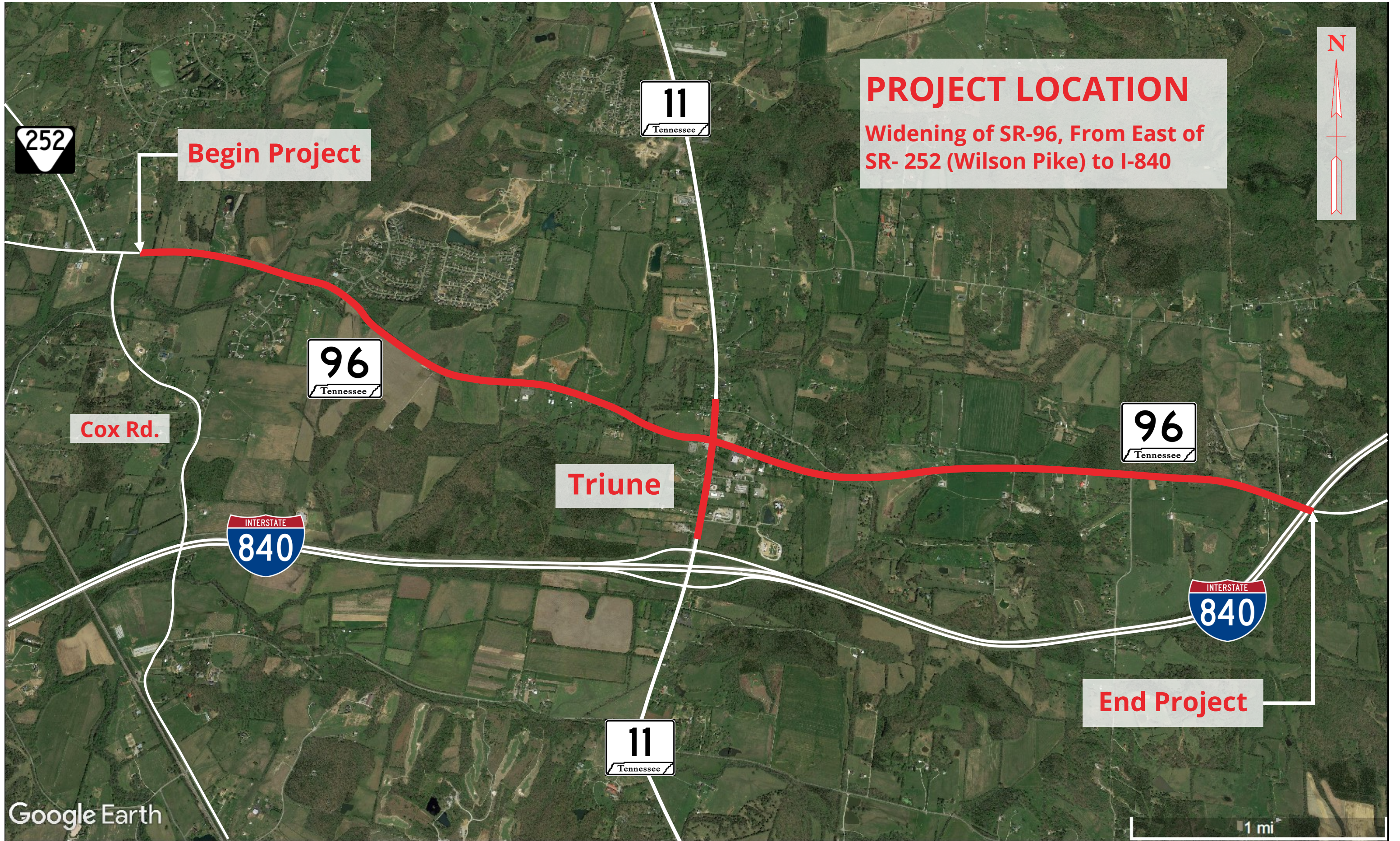
- ✓Safety
- ✓Transportation Demand
- ✓System Linkage
- ✓Traffic and Capacity
- ✓Roadway Deficiencies

### Tonight's Schedule

6:15 p.m.	↓	Formal Presentation
7:00 p.m.	↓	Question and Answer Open House
	↓	Gather Feedback <ul style="list-style-type: none"> <li>• Staff located at displays to answer questions</li> </ul>
	↓	Adourn
8:00 p.m.	↓	

### Project Status





**PROJECT LOCATION**  
Widening of SR-96, From East of SR- 252 (Wilson Pike) to I-840

**Begin Project**

**End Project**

**Cox Rd.**

**Triune**

Google Earth

1 mi