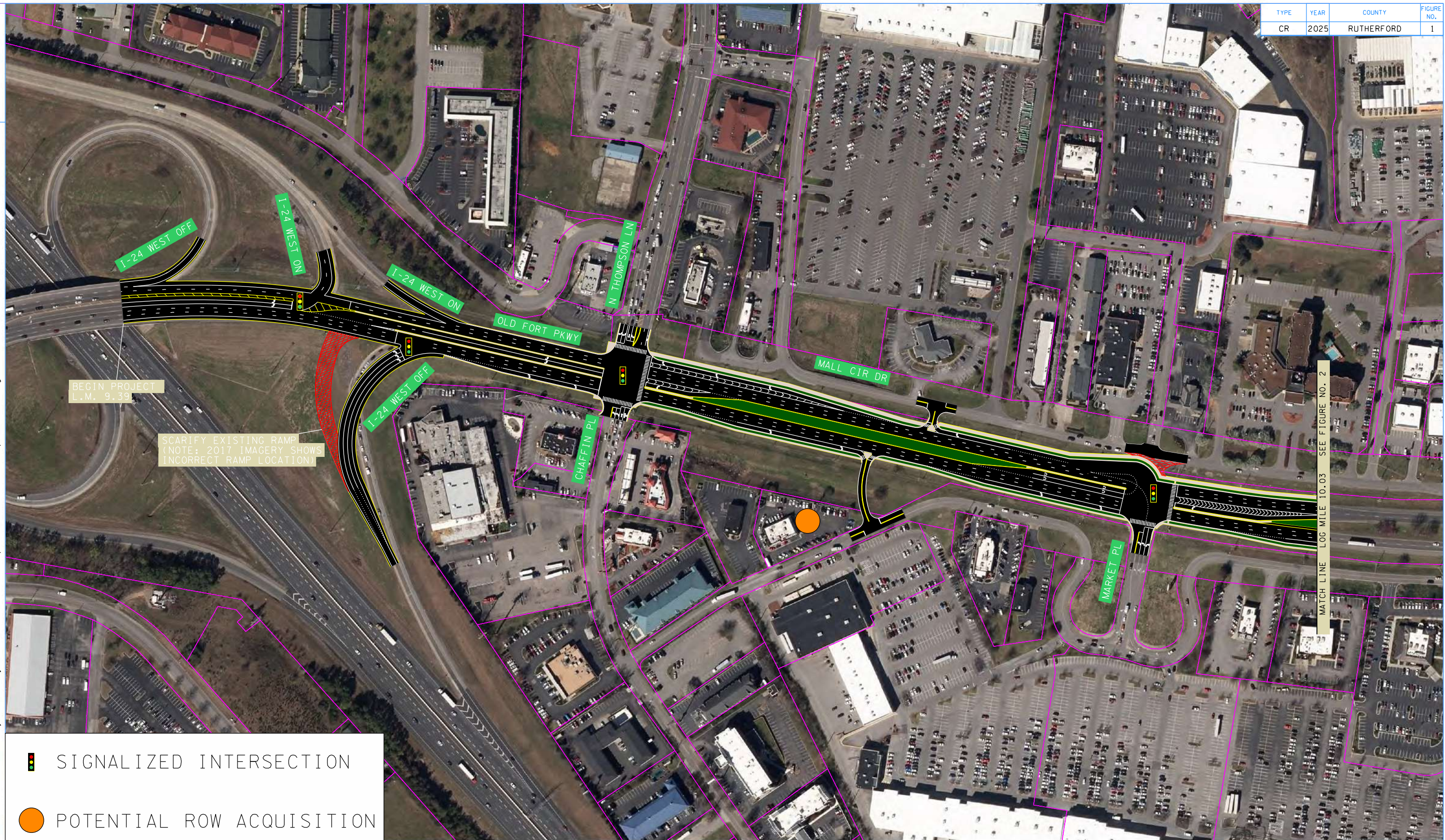






TYPE	YEAR	COUNTY	FIGURE NO.
CR	2025	RUTHERFORD	1

I:\26\2025 10\05\52 AM X:\Projects\Rutherford\SR 96\From I-24 to US-41\LocalProject-SP\Project-SP\Project-SP\Conceptual Plans (DCN & PDF)\Proposed\Sheet 1.dgn



 SIGNALIZED INTERSECTION  
 POTENTIAL ROW ACQUISITION

0'    250'    500'    750'  




# CONCEPT REPORT

STATE ROUTE 35  
L.M. 9.39 TO L.M. 11.33  
RUTHERFORD COUNTY

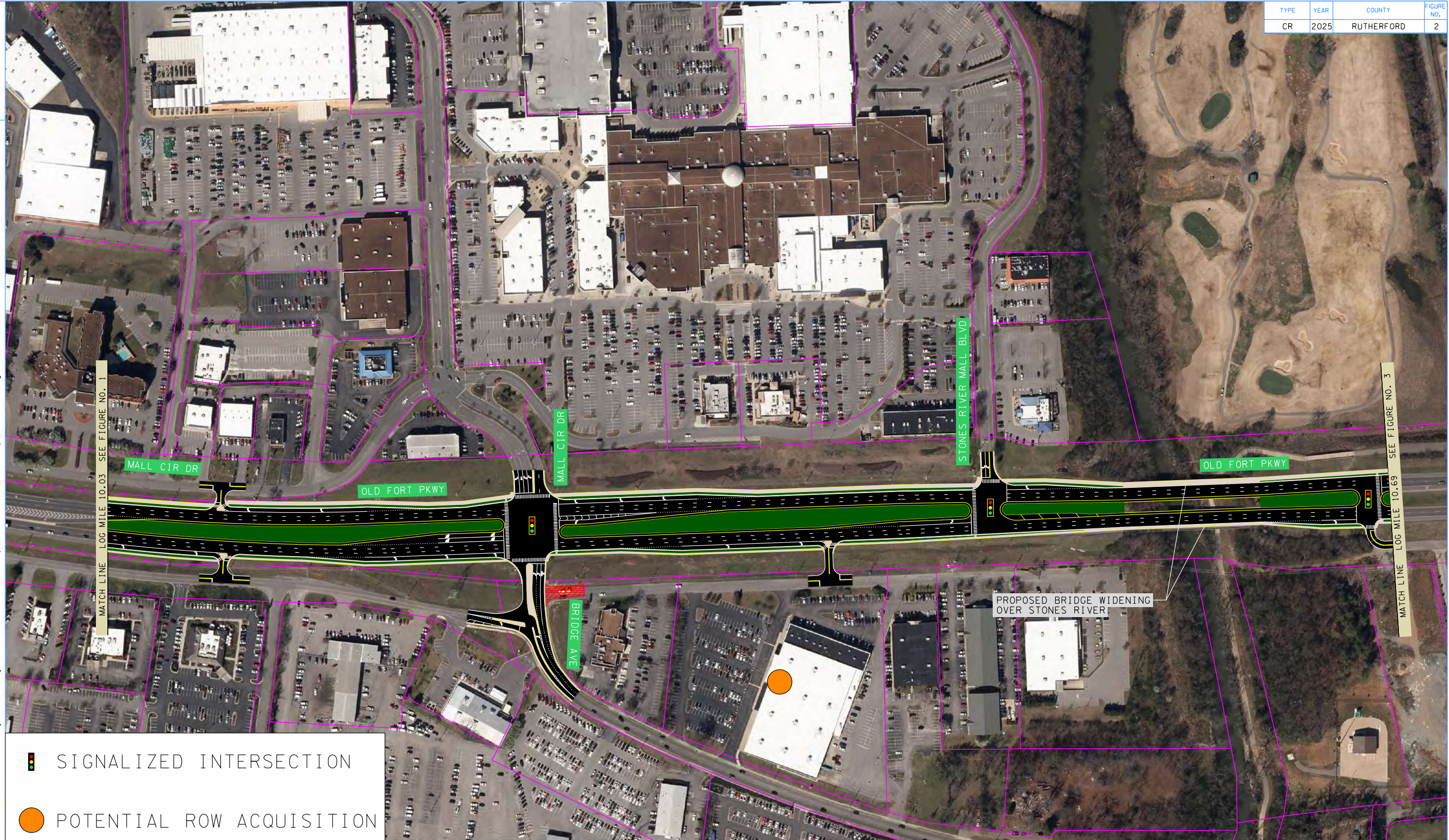
**CAUTION!**  
PRELIMINARY  
PLANS  
SUBJECT TO  
CHANGE



STATE OF TENNESSEE  
DEPARTMENT OF TRANSPORTATION

FIGURE 1  
S.R. 35  
L.M. 9.39 to  
L.M. 10.03

TYPE	YEAR	COUNTY	FIGURE NO.
CR	2025	RUTHERFORD	2

I:\26\2025 9:26:59 AM X:\Projects\Rutherford\SR 96\From I-24 to US-41\LocalProject-SP\Project Files\Microstation\Conceptual Plans (DGN & PDF)\Proposed\Sheet 2.dgn



-  SIGNALIZED INTERSECTION
-  POTENTIAL ROW ACQUISITION

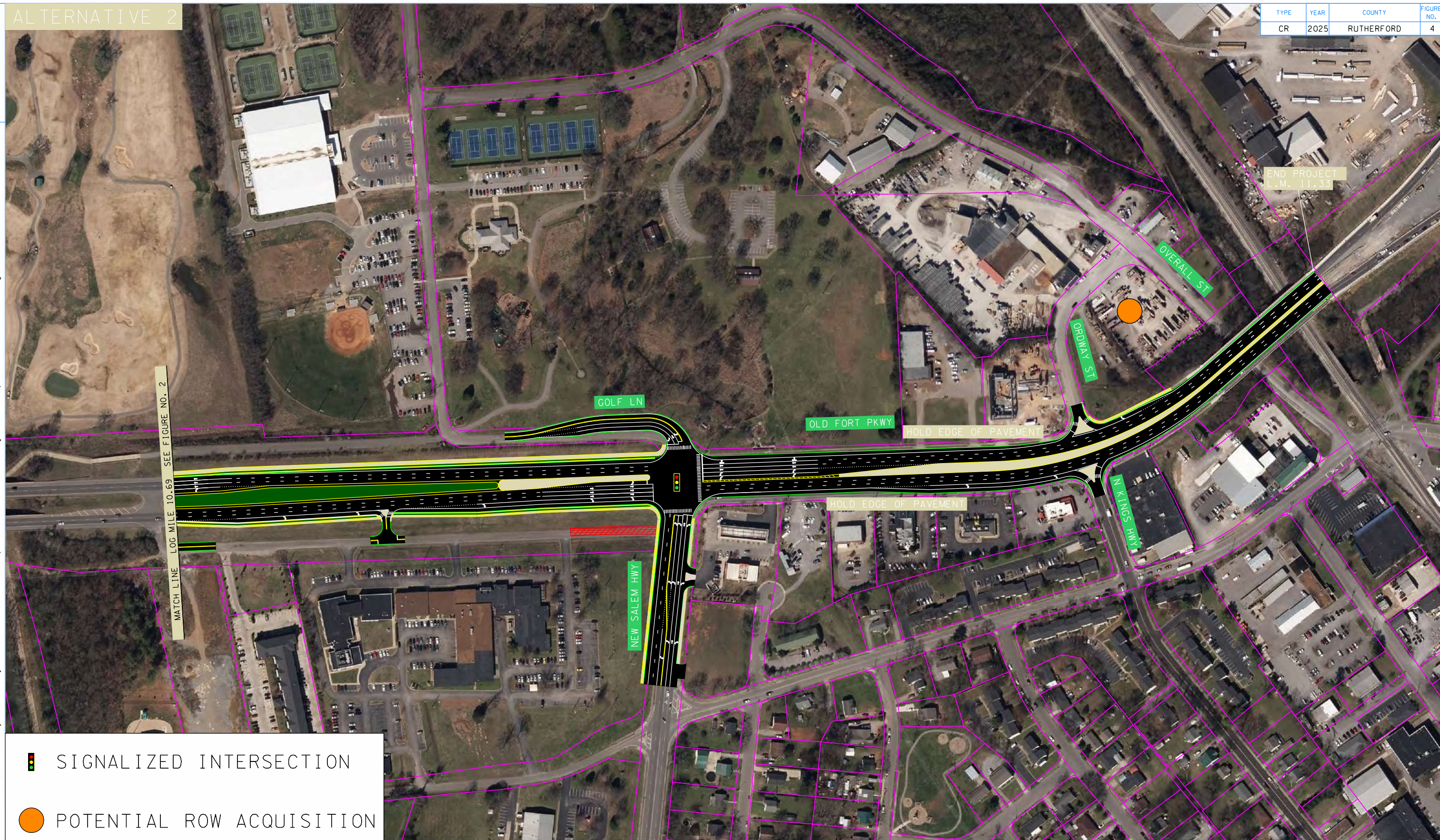


**CONCEPT REPORT**  
 STATE ROUTE 35  
 L.M. 9.39 TO L.M. 11.33  
 RUTHERFORD COUNTY

**CAUTION!**  
 PRELIMINARY  
 PLANS  
 SUBJECT TO  
 CHANGE

TYPE	YEAR	COUNTY	FIGURE NO.
CR	2025	RUTHERFORD	4

2/16/2025 10:40:55 AM X:\Projects\Rutherford\SR 96\From I-24 to US-41\LocalProject-SP\Project Files\Microstation\ConceptualPlans (DGN & PDF)\Kinley Horn Concept Altered\Alternative 2.dgn



END PROJECT  
L.M. 11.33

MATCH LINE LOG MILE 10.69 SEE FIGURE NO. 2

- SIGNALIZED INTERSECTION
- POTENTIAL ROW ACQUISITION



**CONCEPT REPORT**  
 STATE ROUTE 35  
 L.M. 9.39 TO L.M. 11.33  
 RUTHERFORD COUNTY

**CAUTION!**  
 PRELIMINARY  
 PLANS  
 SUBJECT TO  
 CHANGE

STATE OF TENNESSEE  
 DEPARTMENT OF TRANSPORTATION

FIGURE 4  
 S.R. 35  
 L.M. 10.69 to  
 L.M. 11.33