

Project Facts

Bridge Closure

July 2023 – Sept. 2023

Construction Contract

\$71,900,000

Contractor

Kiewit Corporation

Average Daily Traffic

29,530 in 2023

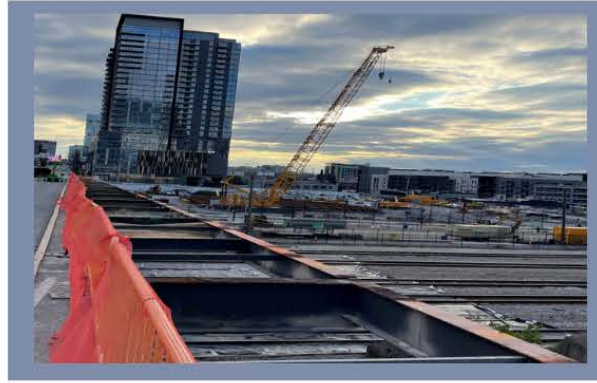
Project Timeline

- Early Construction: Sept. 2022 – June 2023
- Closure Window: July 2023 – Sept. 2023
- Post Closure: Sept. 2023 – Oct. 2023
- Project completion: Oct. 31, 2023

Website &
Email Subscription



Broadway Viaduct Replacement



Completed Work

- Bent 4 – 1 and 4 Columns
- Bent 1 – 3 and 4 Footings
- East Abutment Wall Pour

Ongoing Work

- Remaining N. Sidewalk Demo.
- East abutment construction
- West Abutment Production Pile

Lane Closures March 23 - 29

State Route 1 / Broadway

- Continuous: A permanent traffic switch on SR 1 (Broadway) between 10th Ave S and 12th Ave S for bridge demolition reduces the bridge down to 2 lanes in each direction and a single pedestrian path across the bridge.
- Nightly, 8 p.m. – 5 a.m., excluding weekends, There will be a double right lane closure on SR-1 (Broadway) WB between 10th Ave S and 12th Ave to begin demolition.

11th Avenue

- Nightly, 8 p.m. - 5 a.m., (excluding weekends) Full Closure from Porter St. to McGavock St.
- Continuous Full Greenway Closure