



# I-40 at Central Pike (SR 265)

New Diverging Diamond Interchange  
Design Public Meeting  
Providence Church, 2293 S. Rutland Road, Mt. Juliet, TN 37122

# TONIGHT'S SCHEDULE

5:15 p.m.

Presentation

5:30 p.m.

Open House

- Staff available at displays to answer questions
- Complete comment cards and provide verbal statements to staff

7:00 p.m.

Adjourn

# PURPOSE OF MEETING

- Discuss new Diverging Diamond Interchange for Interstate 40 at SR-265 (Central Pike)
- Provide preliminary plans for public review
- Receive input from the public
  - Comment cards
  - Court reporter
- Answer questions

# PROJECT TEAM INTRODUCTION

- TDOT Project Management
- TDOT Environmental Division
- TDOT Right-of-Way
- TDOT Preconstruction
- HDR, INC. (Design Consultant)



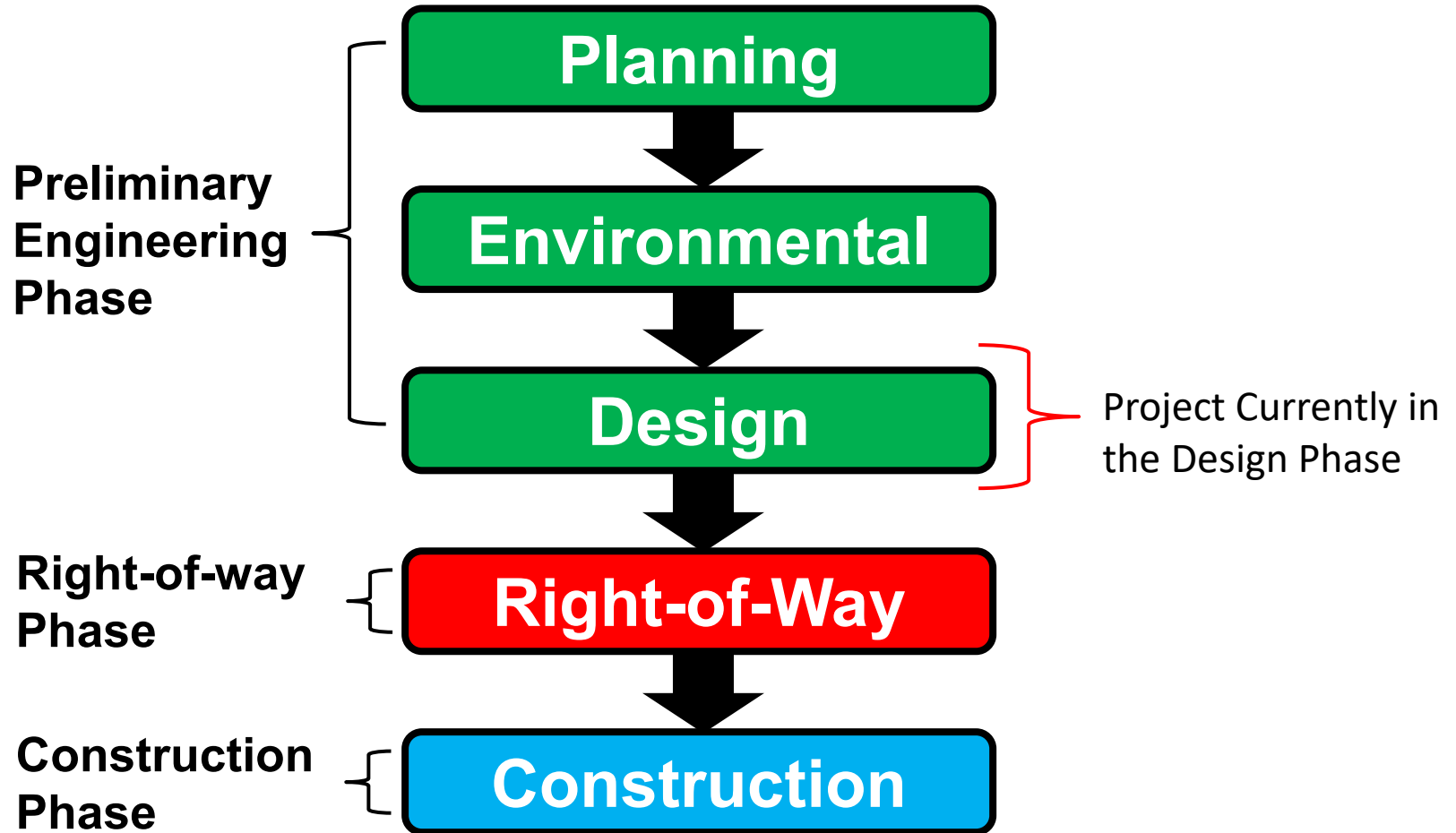
# PROJECT BUDGET AND TIMELINE

- This project is identified in TDOT's 10-Year Project Plan and is funded as a Statewide Partnership Program (SPP) project with a mix of traditional state, TMA state, federal and local dollars.
- The 10-Year Plan can be viewed on TDOT's "Build with Us" website.
- <https://www.tn.gov/tdot/build-with-us.html>

# PROJECT BUDGET AND TIMELINE

- The state and federal dollar budget for the project is up to \$45.2 million.
- The City of Mt. Juliet has committed to contributing additional funds.

# PROJECT BUDGET AND TIMELINE



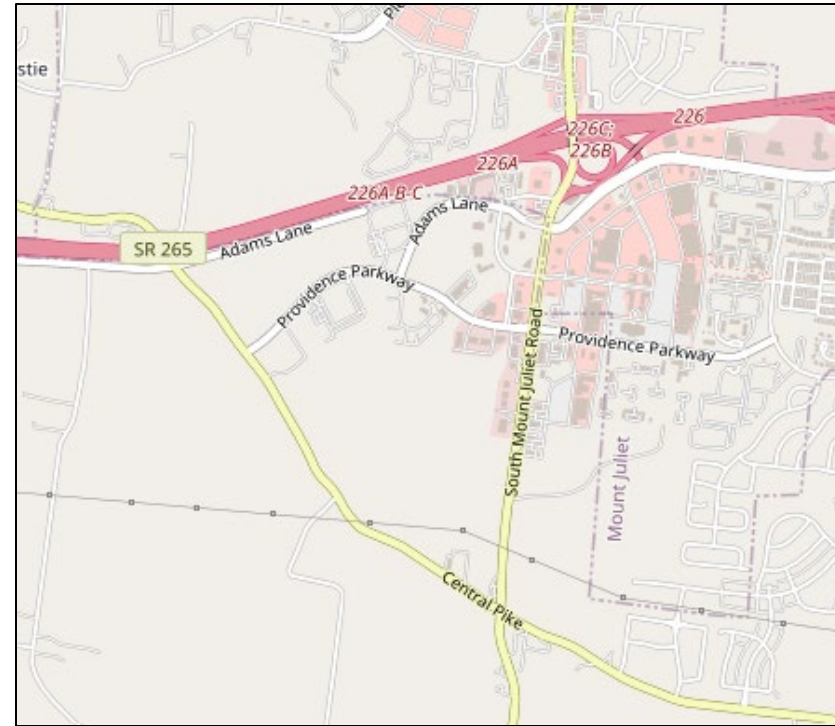
# PROJECT BUDGET AND TIMELINE

- We are currently in early survey and design.
- Right-of-way acquisitions are scheduled to begin in 2027.
- Construction is scheduled to begin in 2030.
- As the project proceeds in design, changes may be necessary to remain within the budget.
  - Sideroad connections shown are indicative of future full build-out of the network to accommodate planned developments.



# OTHER NEARBY PROGRAMMED PROJECTS

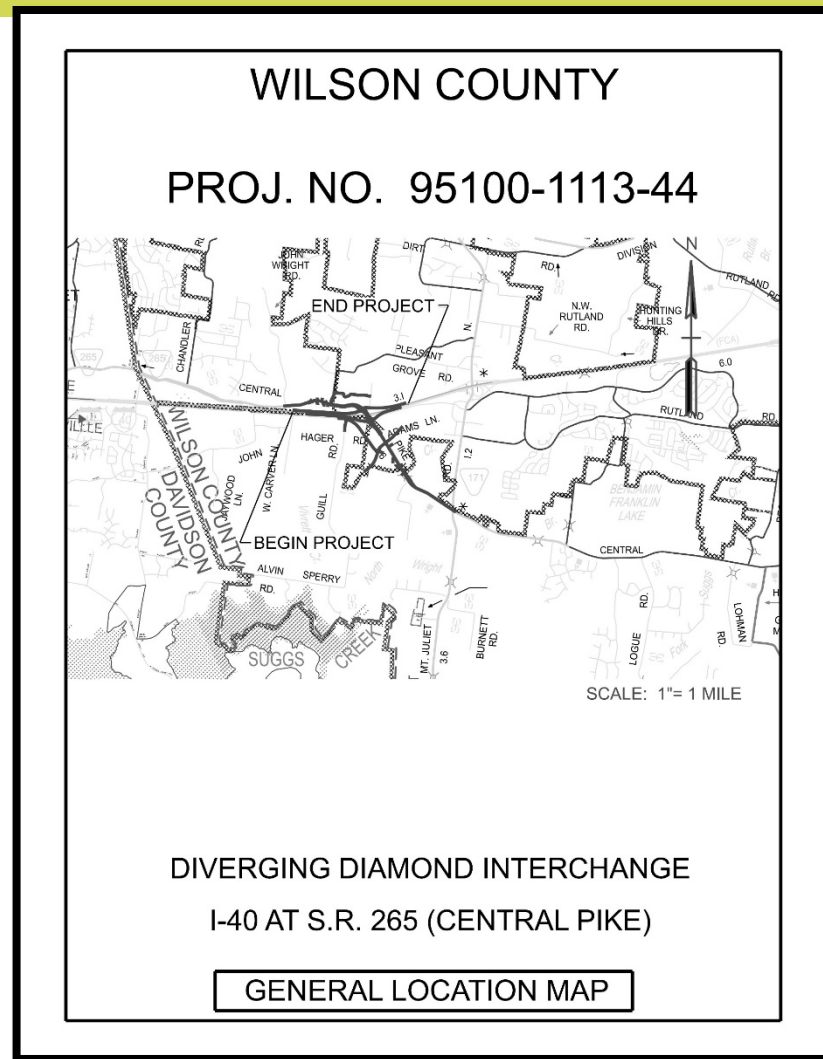
- S. Mt. Juliet Road from existing 5-lane section to SR 265.
  - ROW acquisitions are ongoing, Construction scheduled to begin in 2032 (City project with State and Federal Funding)
- SR 265 widening from south of the I-40 Interchange to S. Mt. Juliet Road.
  - Design is starting, ROW acquisitions scheduled to begin in 2027, Construction scheduled to begin in 2030



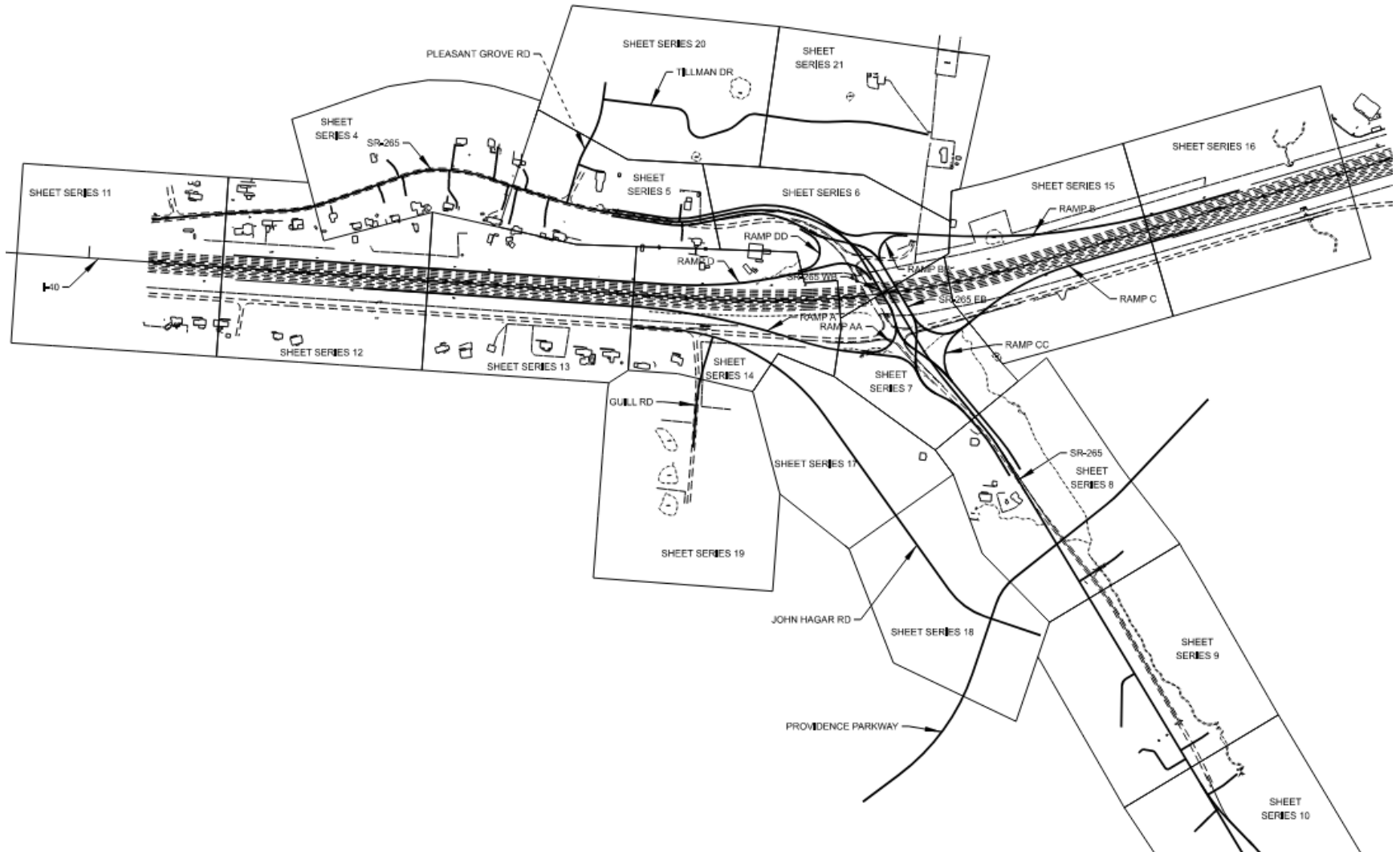
# PURPOSE AND NEED OF PROJECT

- The City of Mt. Juliet, Wilson County and the Nashville Area MPO initiated the request for a new interchange along I-40 to accommodate future traffic demands and relieve existing and anticipated capacity deficiencies at the I-40 Exit 226 (SR-171) interchange.
  - *Interstate Access Request (IAR), November 2017*

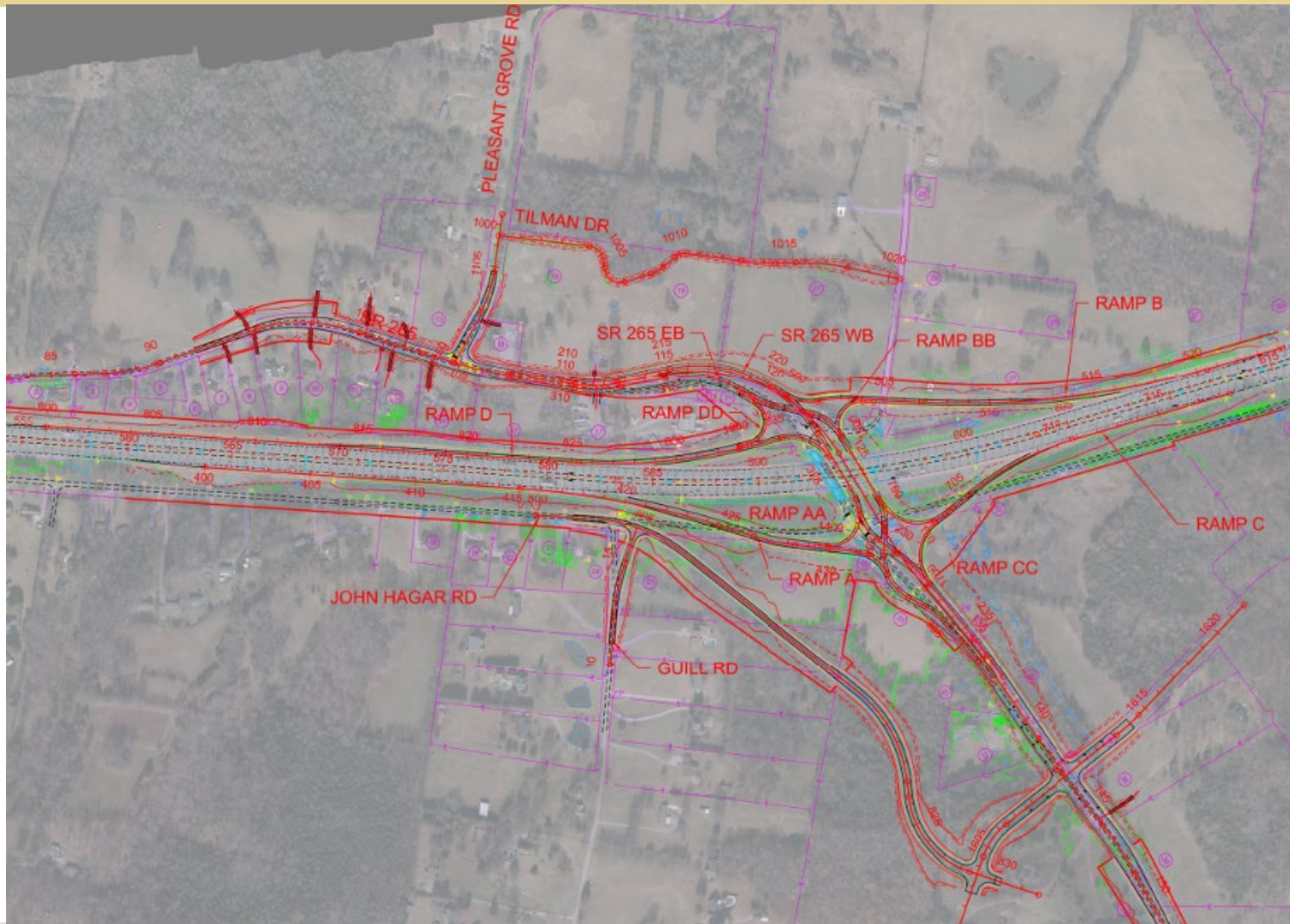
# PROJECT LOCATION MAP



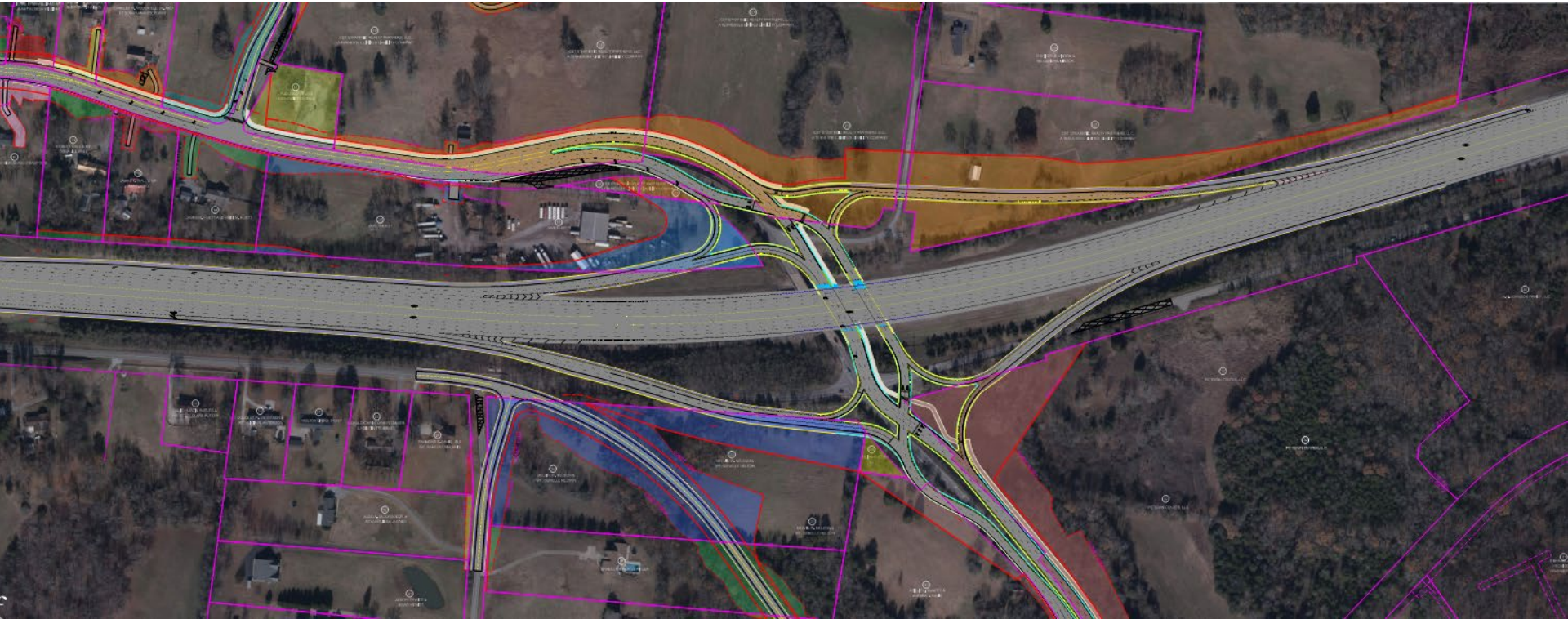
# PROPOSED IMPROVEMENTS



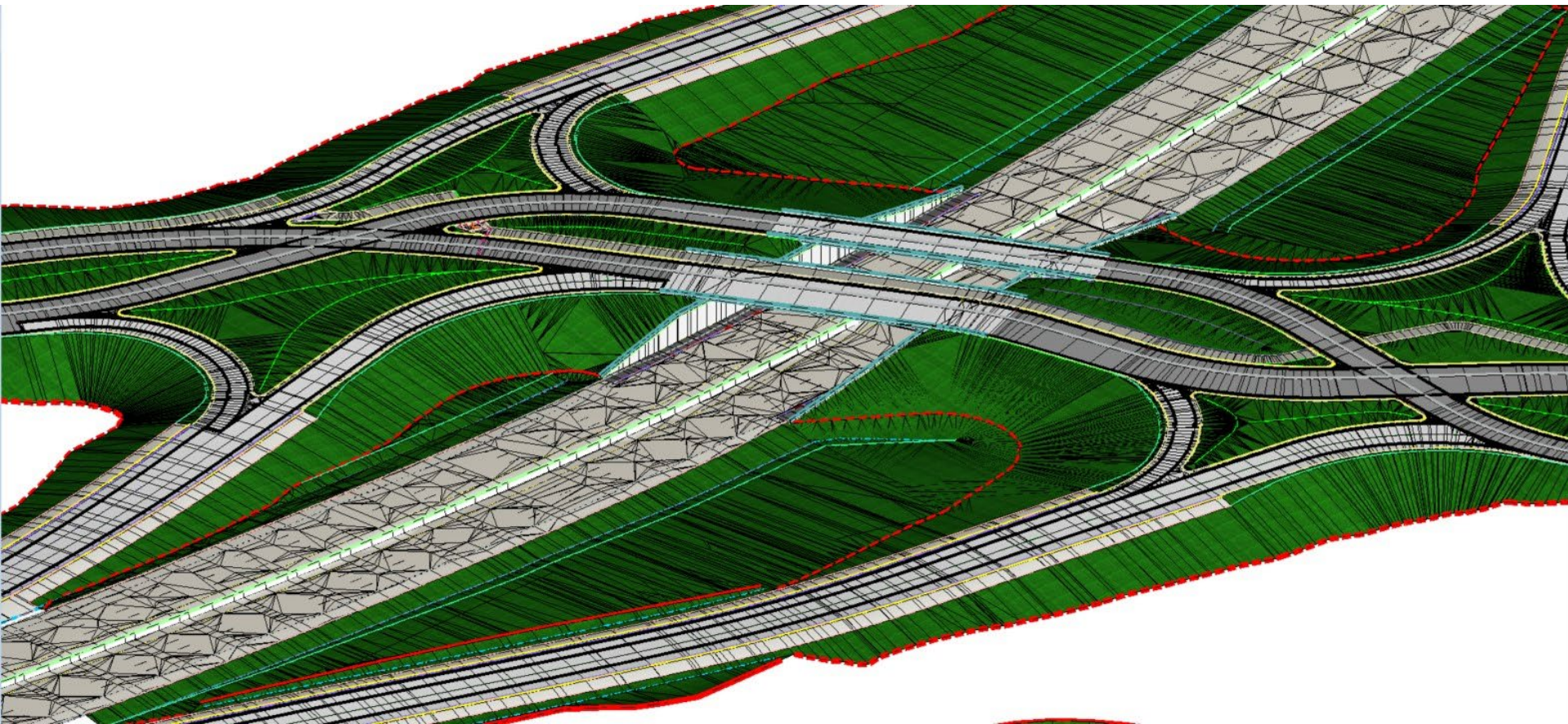
# PROPOSED IMPROVEMENTS



# PROPOSED IMPROVEMENTS



# PROPOSED IMPROVEMENTS



# PROPOSED IMPROVEMENTS

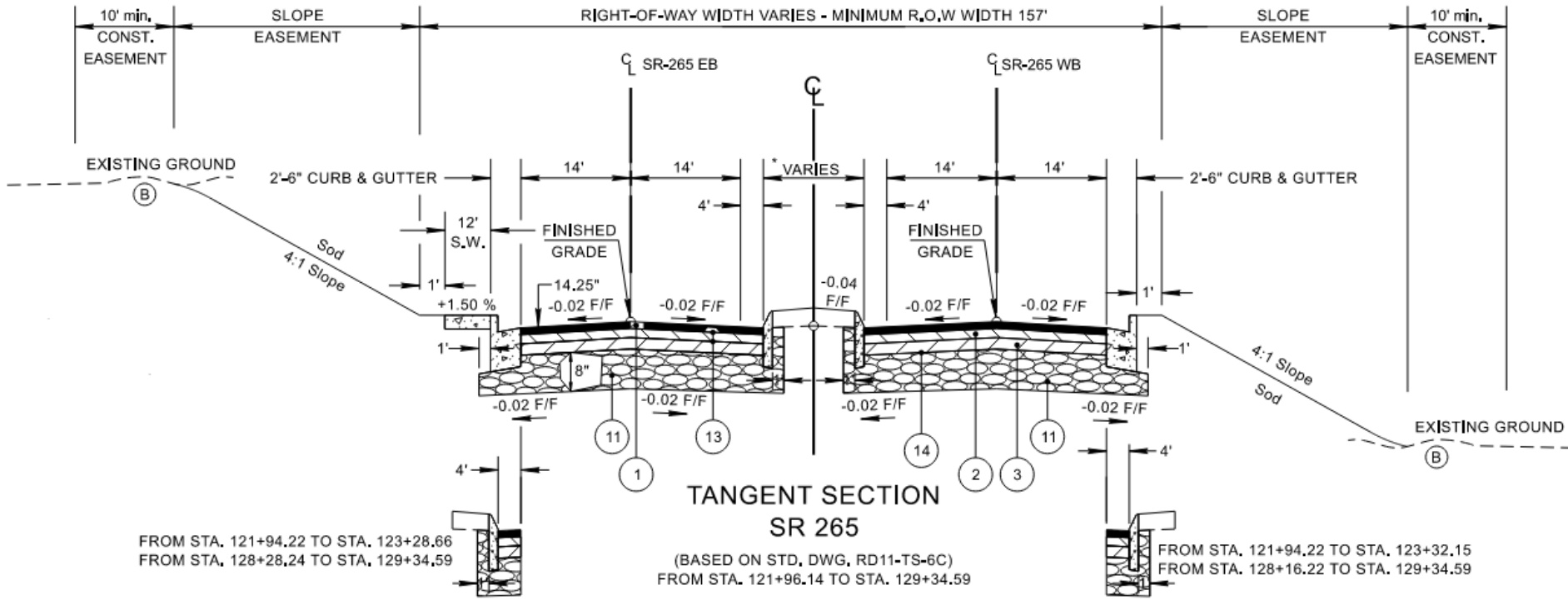




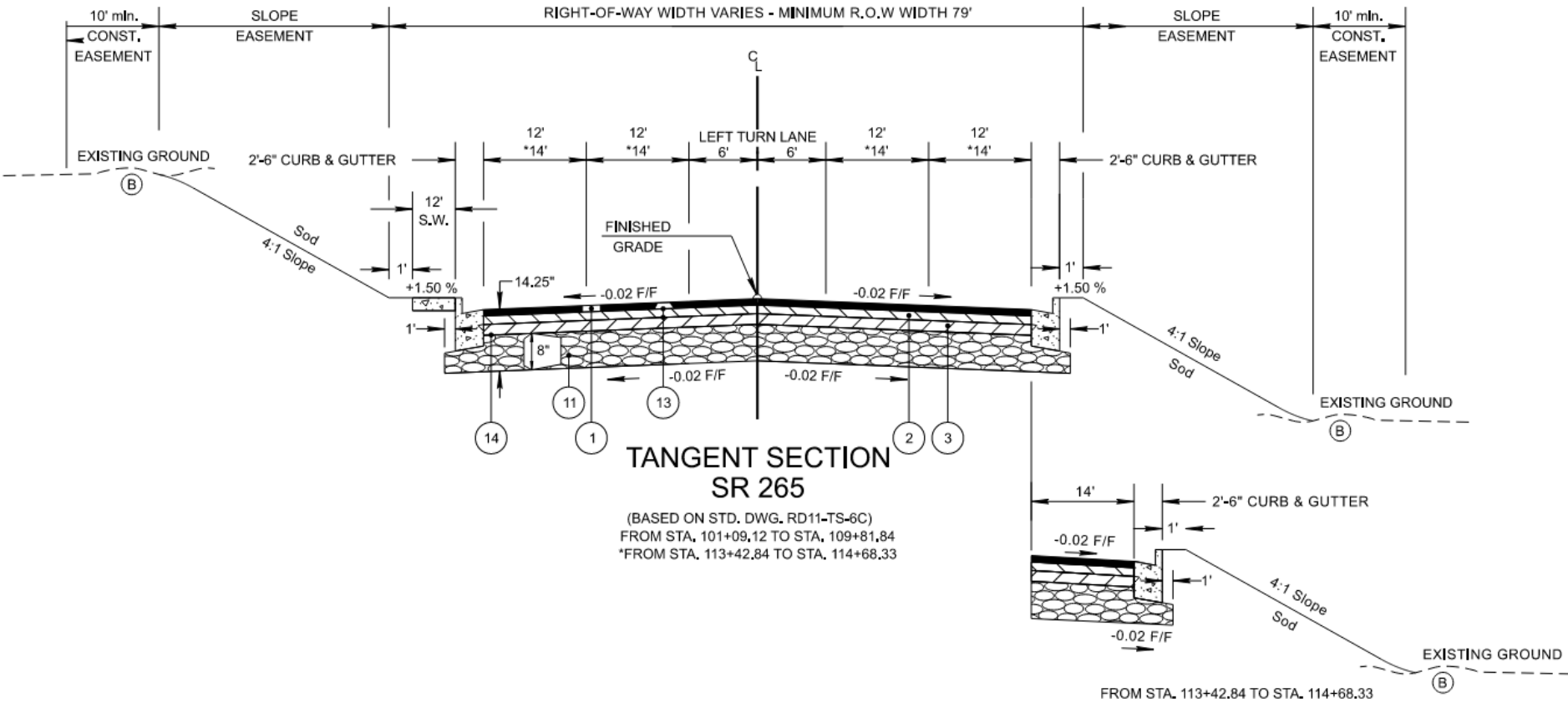
# PROPOSED IMPROVEMENTS



# TYPICAL SECTION: CENTRAL PIKE (SR-265)



# TYPICAL SECTION: CENTRAL PIKE (SR-265)



# COMMENTS

## REMEMBER...

Your comments are very important to us!

How to comment:

- Give a statement to the court reporter
- Fill out a comment card tonight
- Mail us a letter or comment card within 21 days
- Tell us your concerns
- Comments will be included in the official record

# COMMENTS

- OPEN HOUSE SESSION
  - Answer project questions
  - Clarify presentation
  - Identify appropriate staff resources
  - Assist with property owner concerns

# PROJECT INFORMATION

**COMMENTS  
OR  
QUESTIONS**



[TDOT.Comments@tn.gov](mailto:TDOT.Comments@tn.gov)

**TDOT  
PROJECT  
WEBSITE**



<https://www.tn.gov/tdot/projects/region-3/sr-265-central-pike.html>

# CONTACT

For more information, please contact:

Jon Storey, P.E.

Director, Project Management – Region 3

615-350-4300

[jon.storey@tn.gov](mailto:jon.storey@tn.gov)

Bradley Martin, P.E.

Project Manager 3 – Legislative Projects

615-350-4219

[bradley.martin@tn.gov](mailto:bradley.martin@tn.gov)