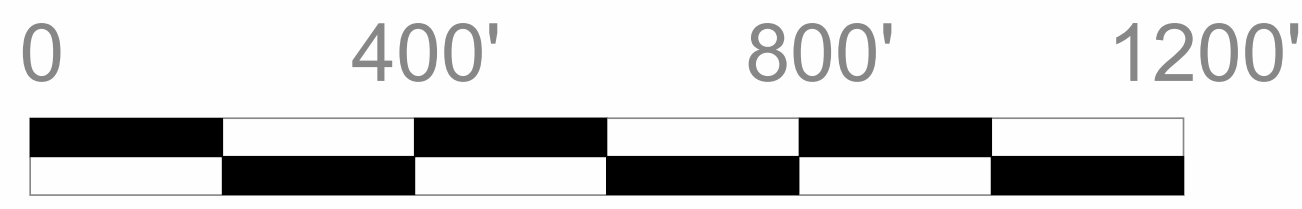


I-24 - FROM NEAR I-59 TO NEAR US-27
HAMILTON COUNTY
PROJECT NO. NH-I-24-3(95); 33002-0174-44
PIN: 124072.00
SHEET 1 OF 5



33002-0174-44 (GA - MM 2.1)
BEGIN PROJECT NO. NH-I-24-3(95) LINE & GRADE
I24WB STA. 1190+65.76
N 202376.77832 E 2195017.8326

LIMIT OF CONSTRUCTION LINE & GRADE
I24EB STA. 1195+27.65
N 201877.9287 E 2195260.8199

BEGIN RAMP C CONST.
STA. 55+55.38 RAMP C= I24WB
STA. 1277+56.47
RAMP C
END RAMP C CONST.
STA. 50+00.00

END RAMP D CONST.
STA. 36+30.34

RAMP D

BEGIN RAMP D CONST.
STA. 20+00.00 RAMP D= I24WB
STA. 1254+70.07

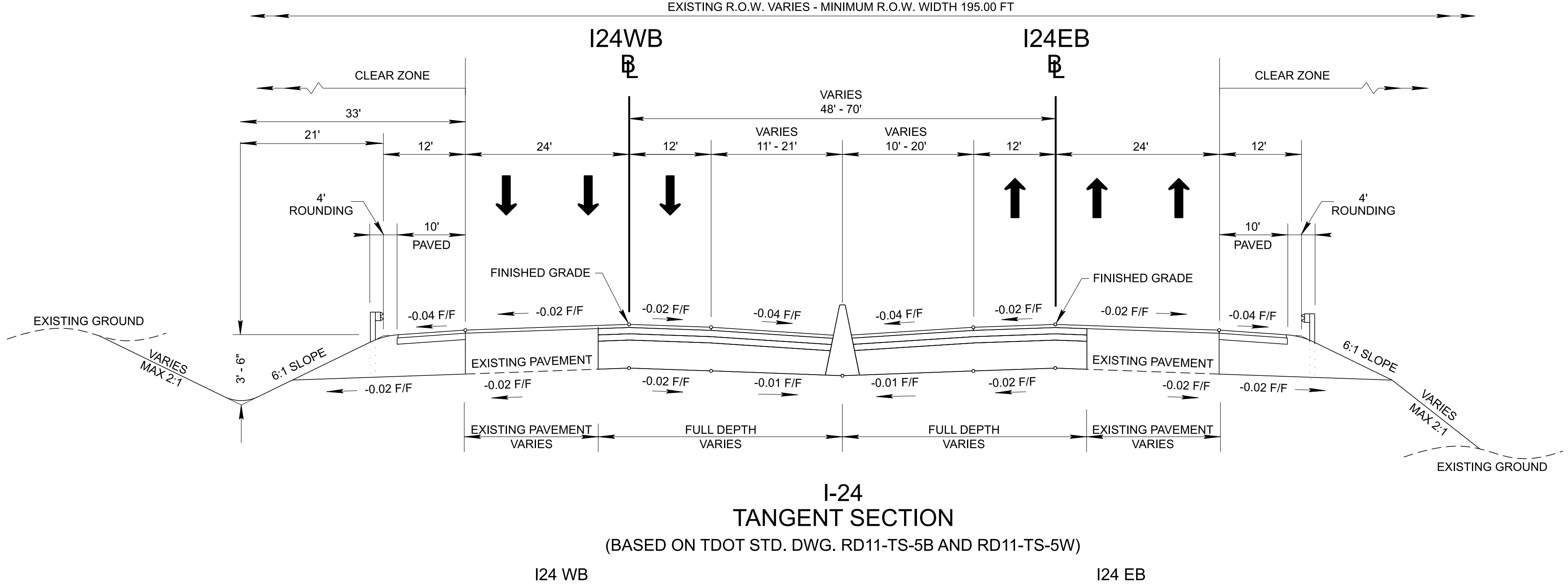
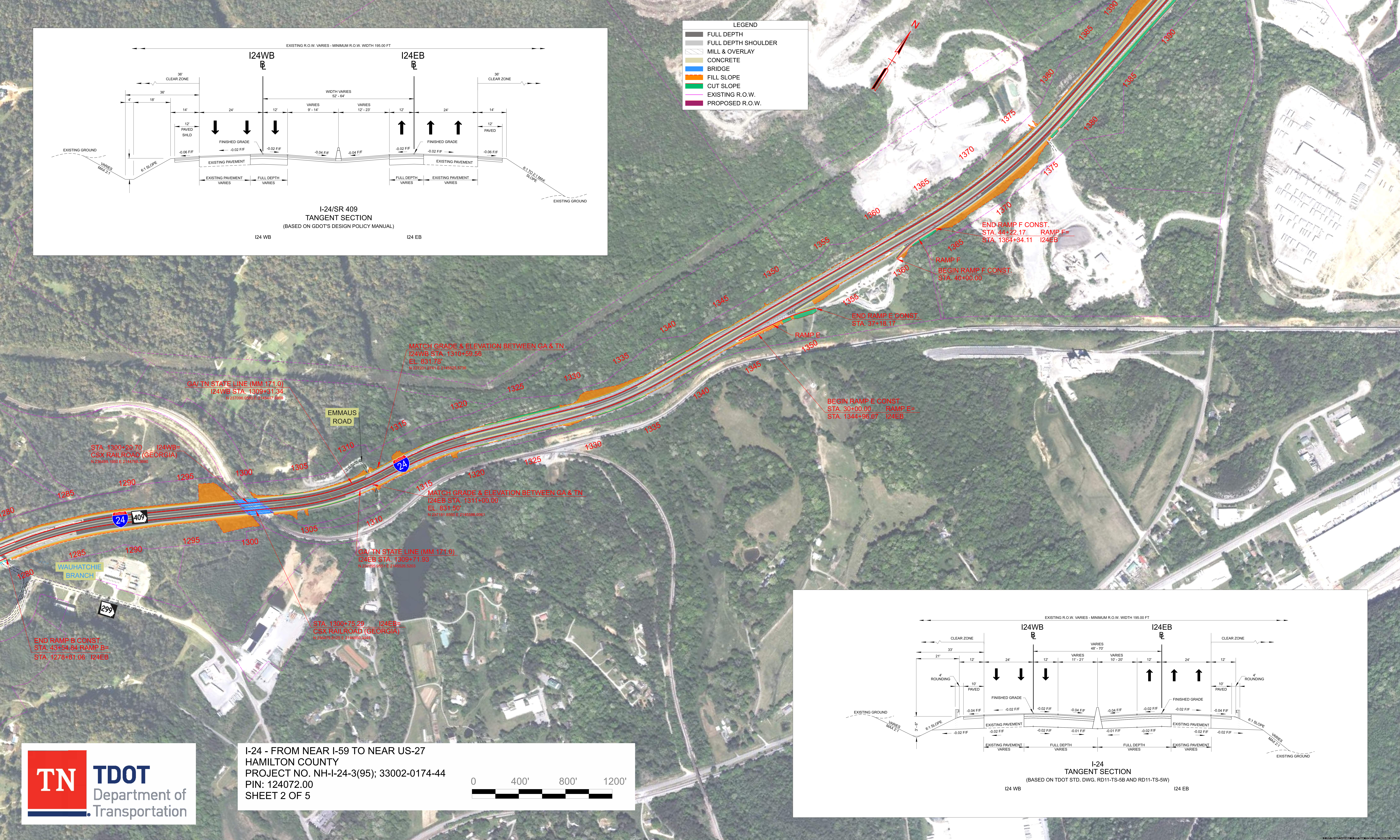
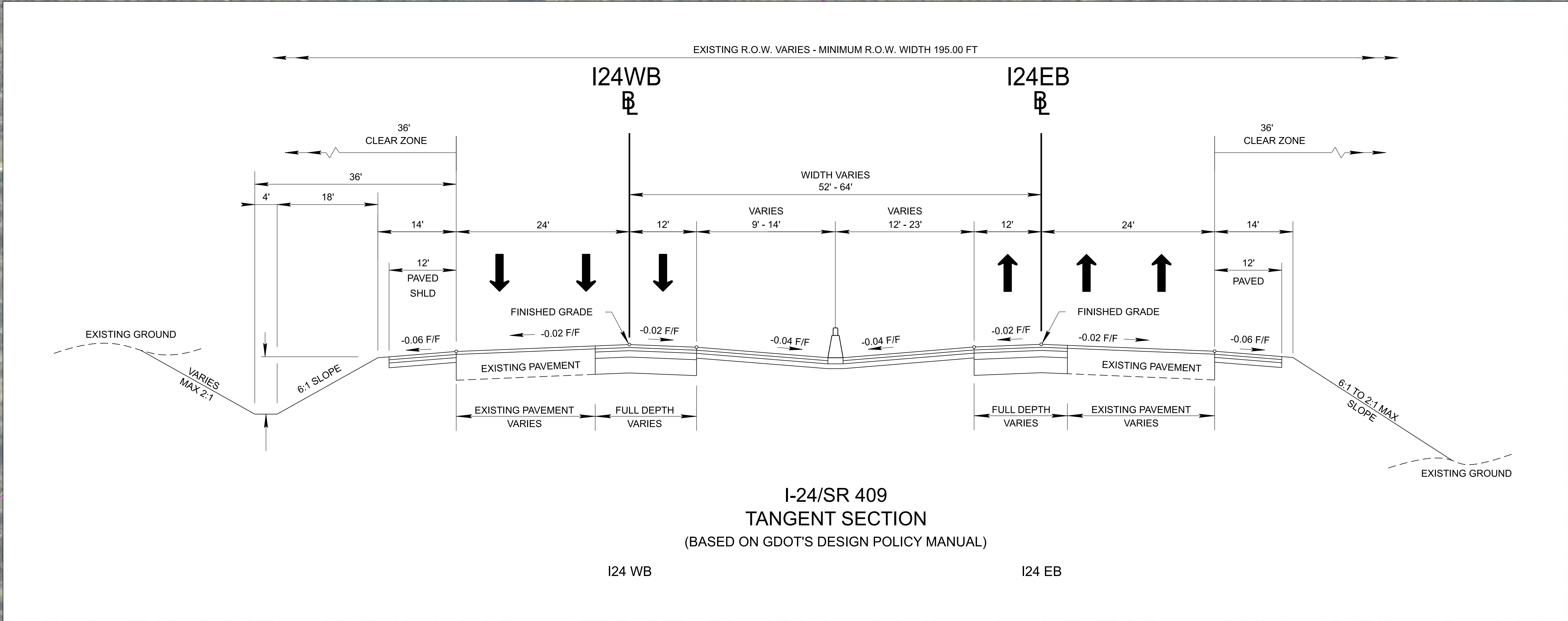
RAMP A

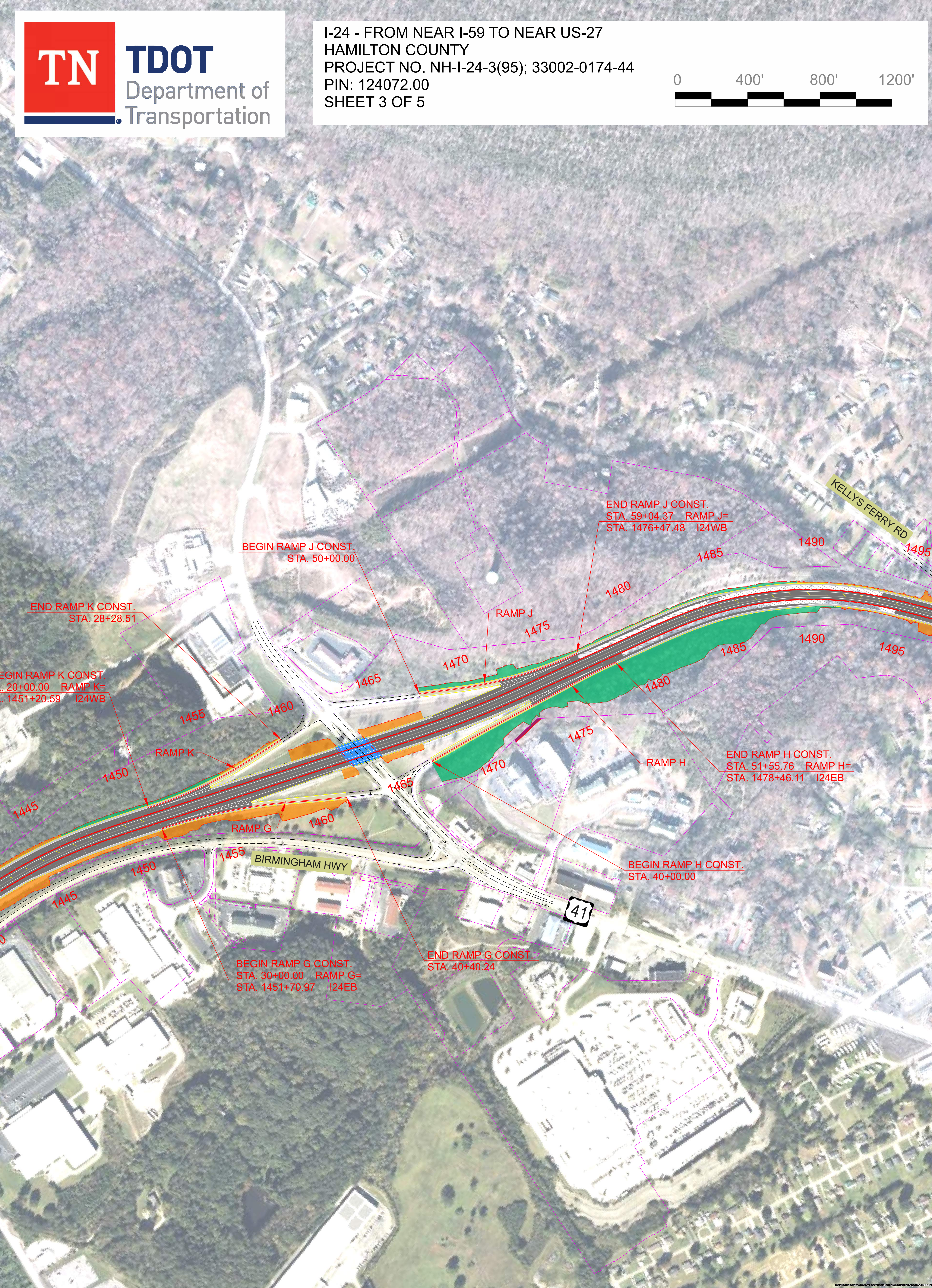
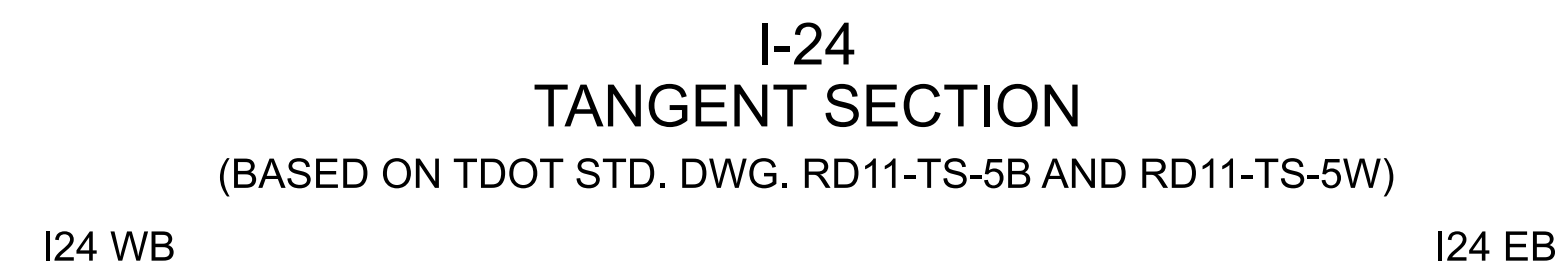
END RAMP A CONST.
STA. 34+25.03

BEGIN RAMP A CONST.
STA. 30+00.00 RAMP A= I24EB
STA. 1264+68.18

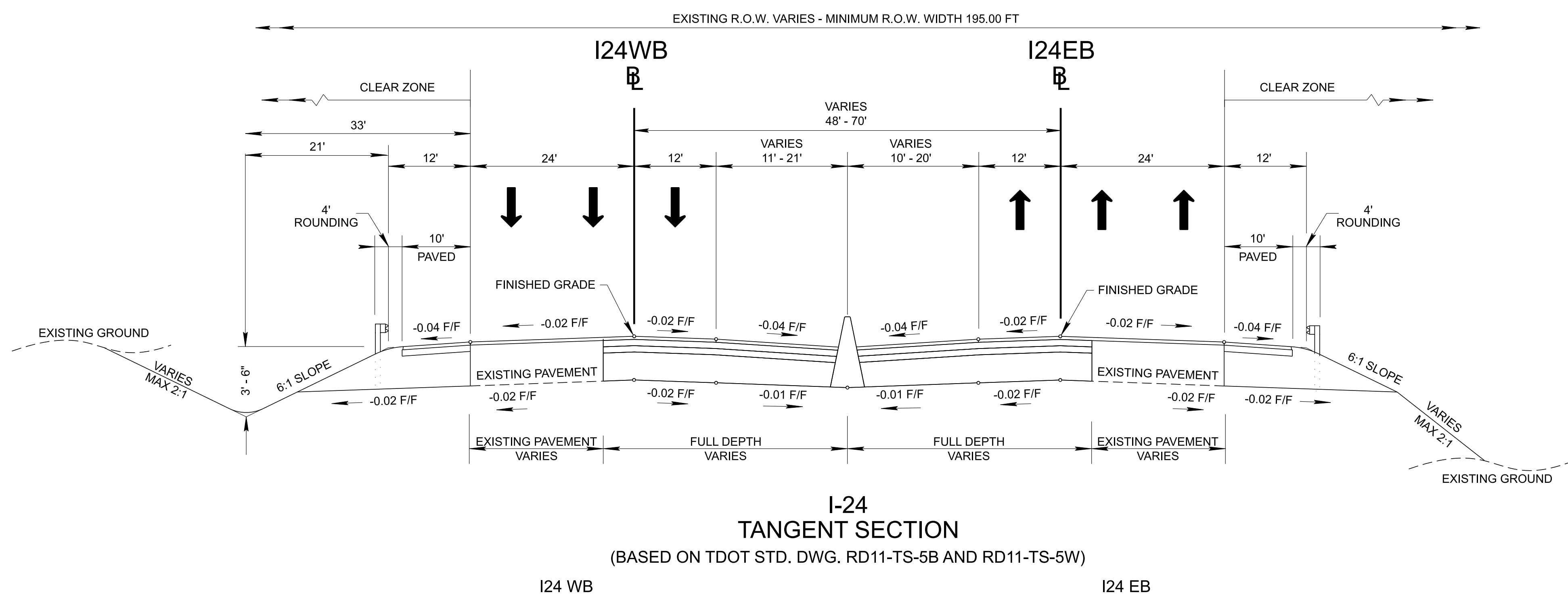
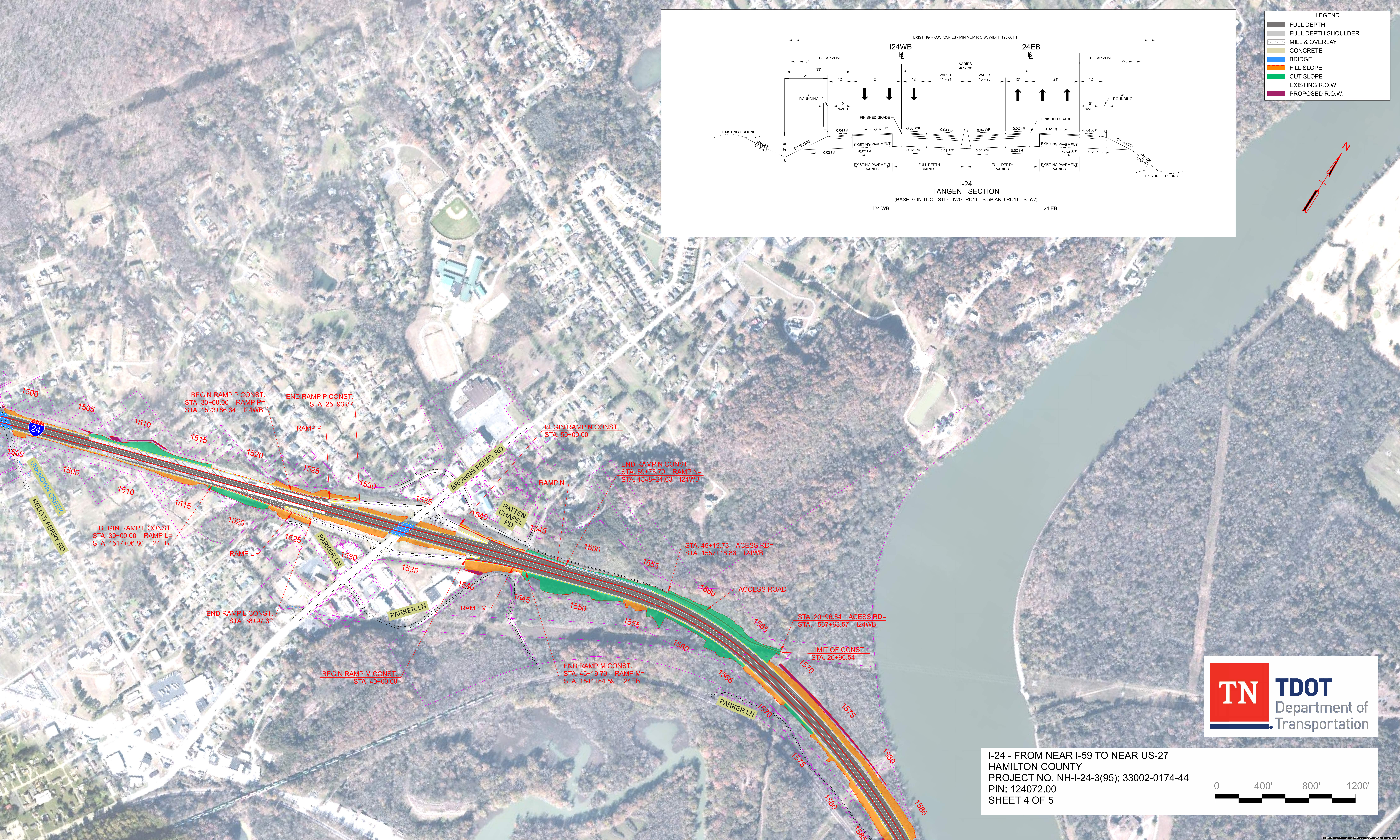
END RAMP B CONST.
STA. 40+00.00

RAMP B

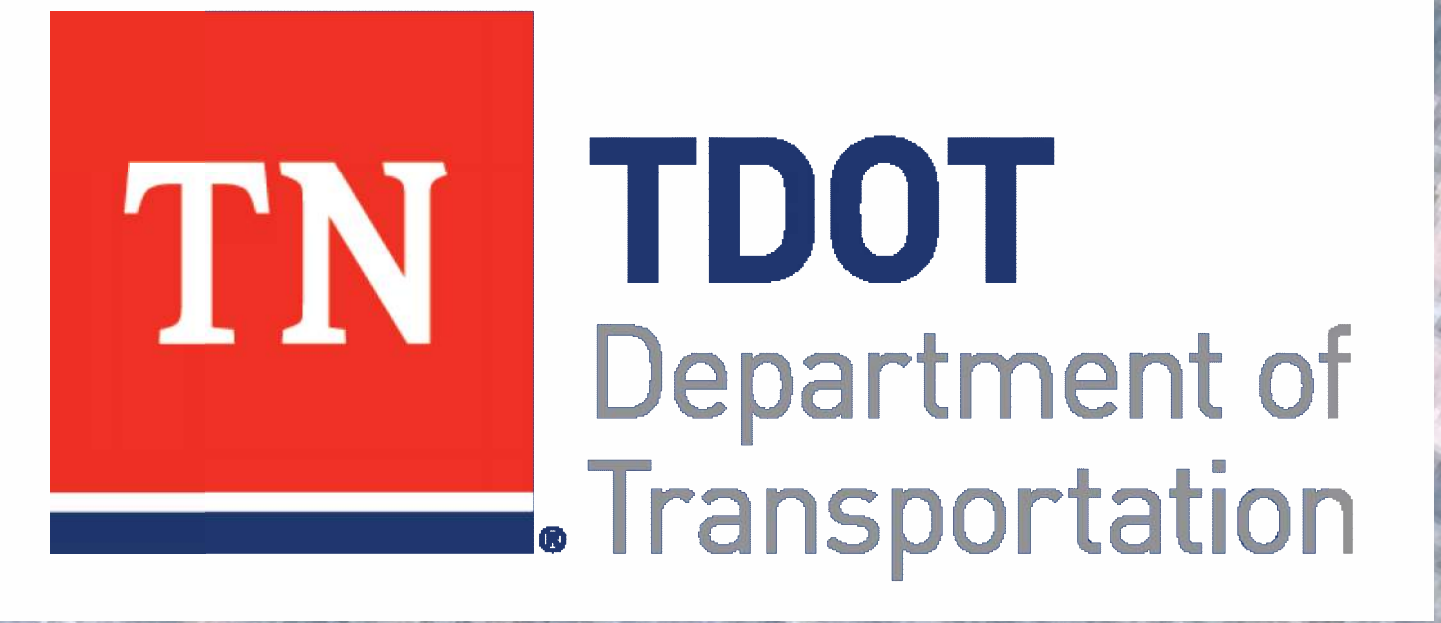




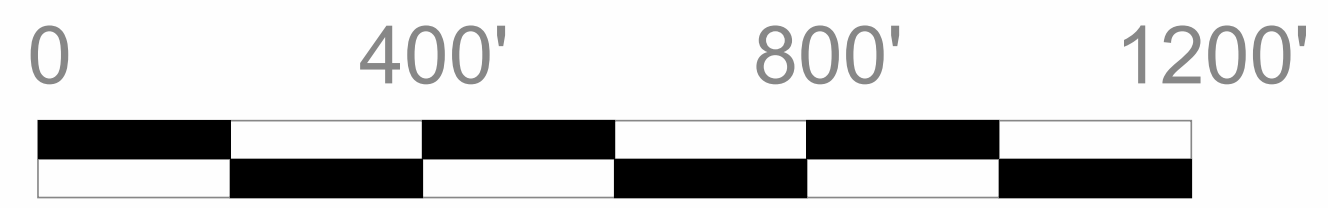
0 400' 800' 1200'

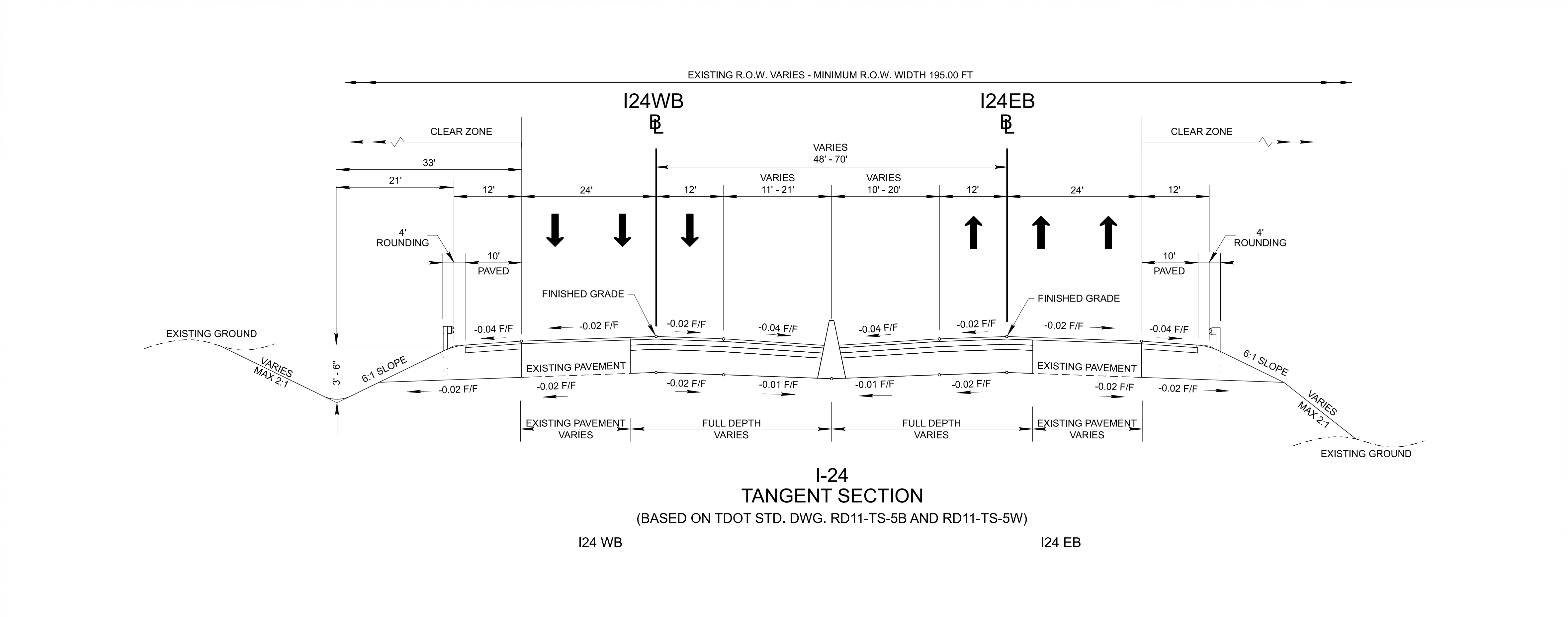
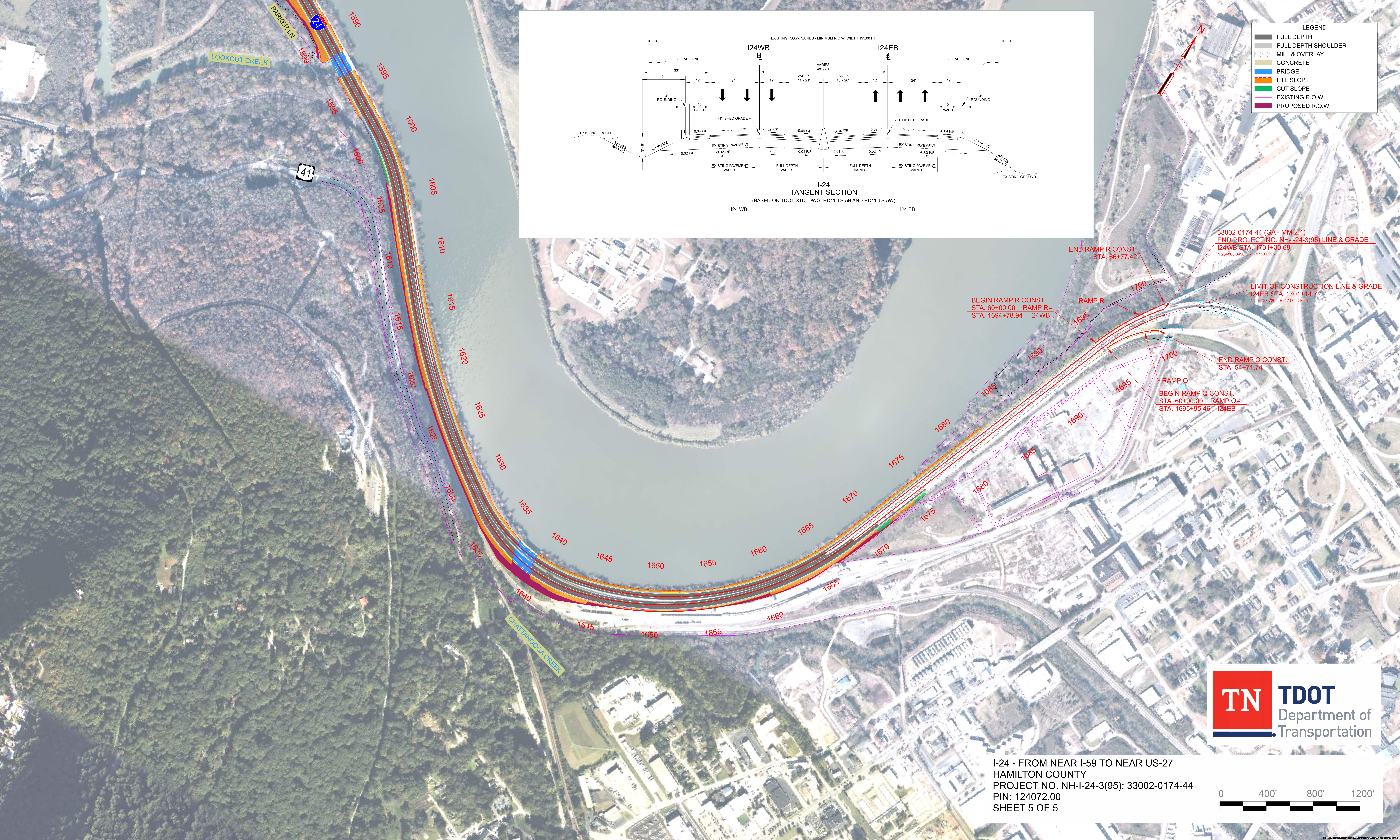


- LEGEND
- FULL DEPTH
 - FULL DEPTH SHOULDER
 - MILL & OVERLAY
 - CONCRETE
 - BRIDGE
 - FILL SLOPE
 - CUT SLOPE
 - EXISTING R.O.W.
 - PROPOSED R.O.W.



I-24 - FROM NEAR I-59 TO NEAR US-27
HAMILTON COUNTY
PROJECT NO. NH-I-24-3(95); 33002-0174-44
PIN: 124072.00
SHEET 4 OF 5





LEGEND	
	FULL DEPTH
	FULL DEPTH SHOULDER
	MILL & OVERLAY
	CONCRETE
	BRIDGE
	FILL SLOPE
	CUT SLOPE
	EXISTING R.O.W.
	PROPOSED R.O.W.

33002-0174-44 (GA - MM 2:1)
END PROJECT NO. NH-I-24-3(95) LINE & GRADE
I24WB STA. 1701+30.68
N 254808.8450 E 2171750.6296

END RAMP R CONST.
STA. 66+77.42

LIMIT OF CONSTRUCTION LINE & GRADE
I24EB STA. 1701+14.72
N 254727.7205 E 2171744.1603

BEGIN RAMP R CONST.
STA. 60+00.00 RAMP R=
STA. 1694+78.94 I24WB

RAMP R

END RAMP Q CONST.
STA. 54+71.74

RAMP Q

BEGIN RAMP Q CONST.
STA. 60+00.00 RAMP Q=
STA. 1695+95.46 I24EB



I-24 - FROM NEAR I-59 TO NEAR US-27
HAMILTON COUNTY
PROJECT NO. NH-I-24-3(95); 33002-0174-44
PIN: 124072.00
SHEET 5 OF 5

