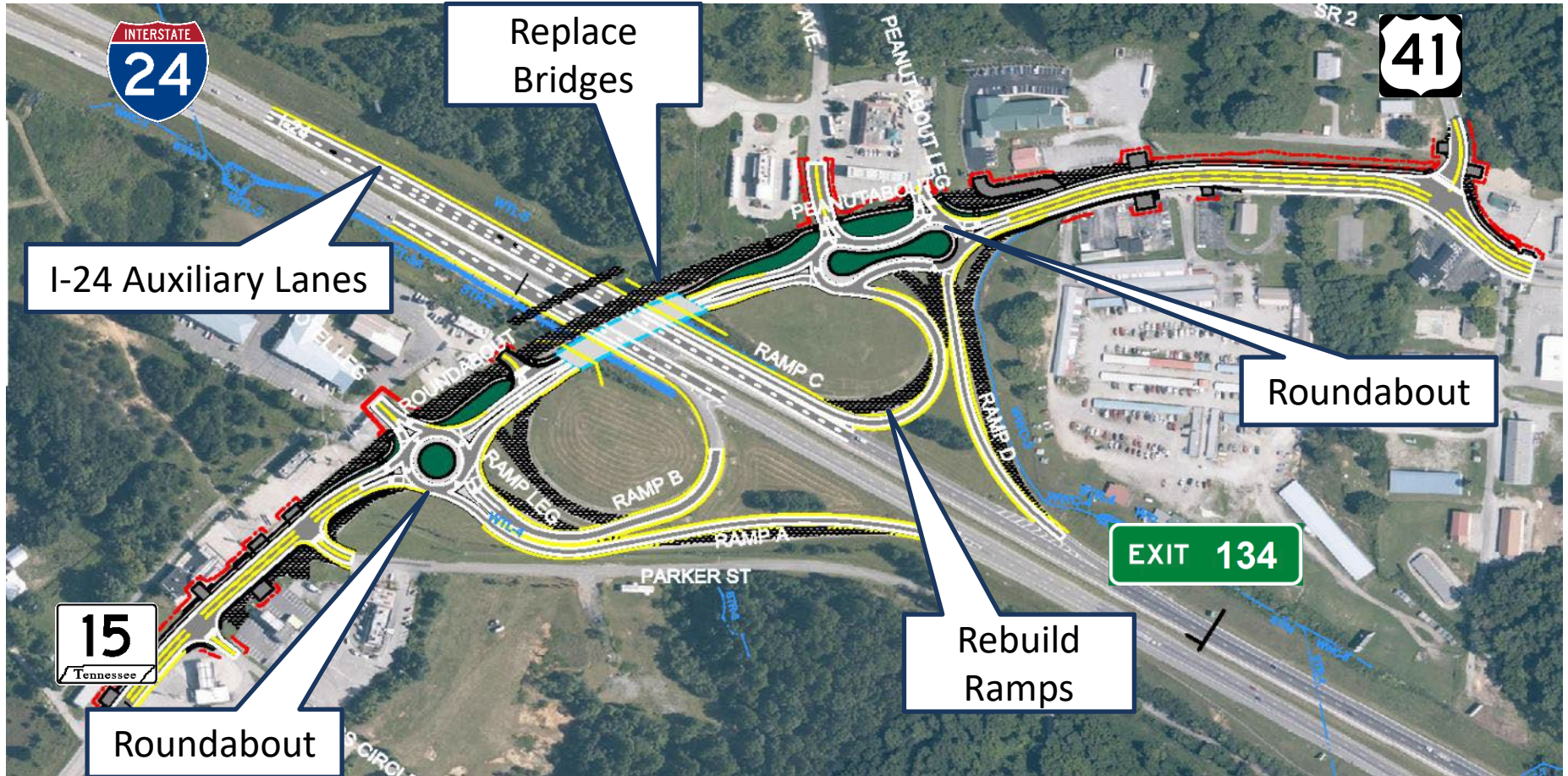




# I-24 at SR-15 Interchange Design Public Meeting

September 11, 2025

# Project Overview



# Project History

- Bridge Replacement
  - Developed Right of Way Plans in 2022
- Mountain Goat Trail
  - Dollar General to Indigo Lane, this project, further east
- Governor's FY23 Rural Interchange Improvement Program
  - Reviewed operations, capacity, safety, community
- FHWA & Environmental Document Approval
  - Operational Analysis 10/31/24, TEER 6/3/25

# Project Schedule

- Environmental Document is Complete
- Preliminary Engineering is 75% Complete
- Right of Way Phase began July 2025
- Construction is scheduled to begin early 2027

## PROJECT STAGES

133134.00 I-24 at SR-15

▸ STAGE 0 - PLANNING

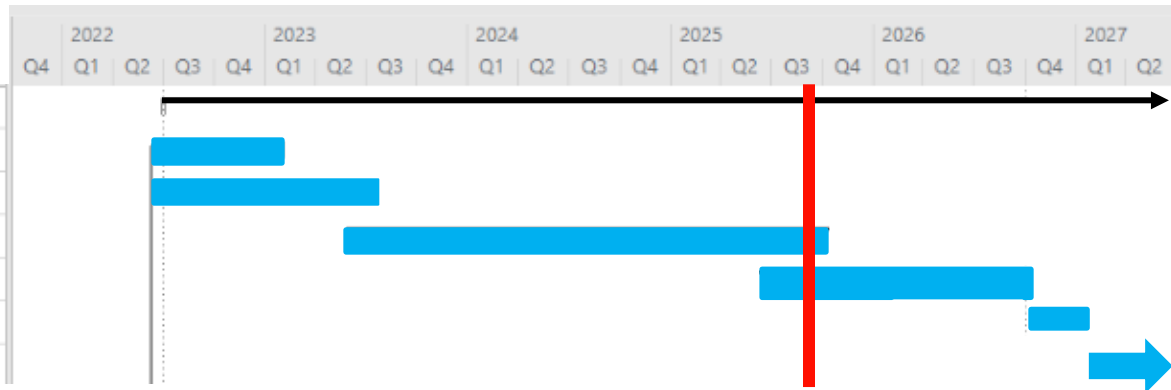
▸ STAGE 1- SETUP/CONTEXT/SCOPING

▸ STAGE 2- FOOTPRINT ESTABLISHED

▸ STAGE 3- PLAN-IN-HAND

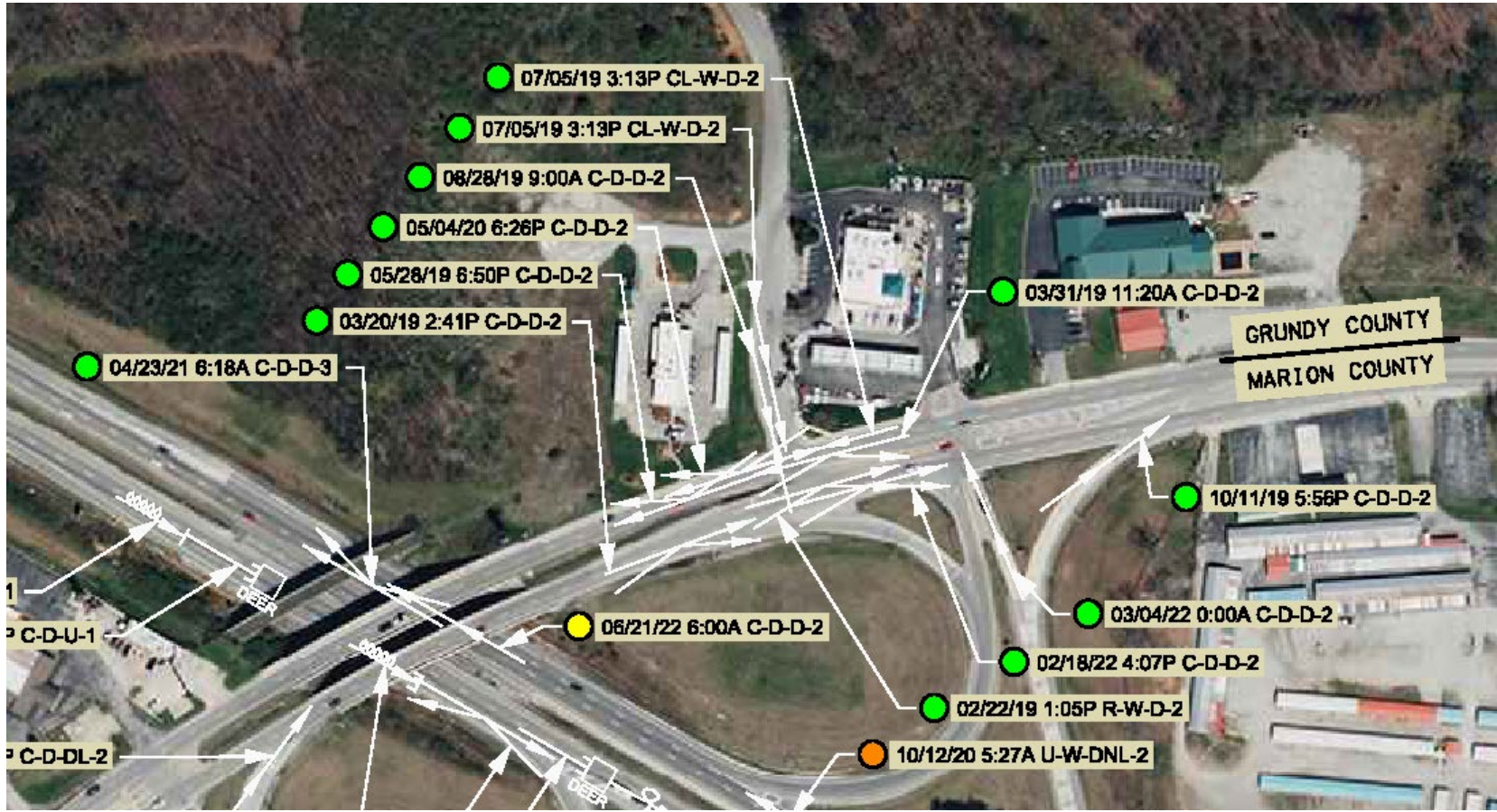
▸ STAGE 4- PS&E

▸ CONSTRUCTION



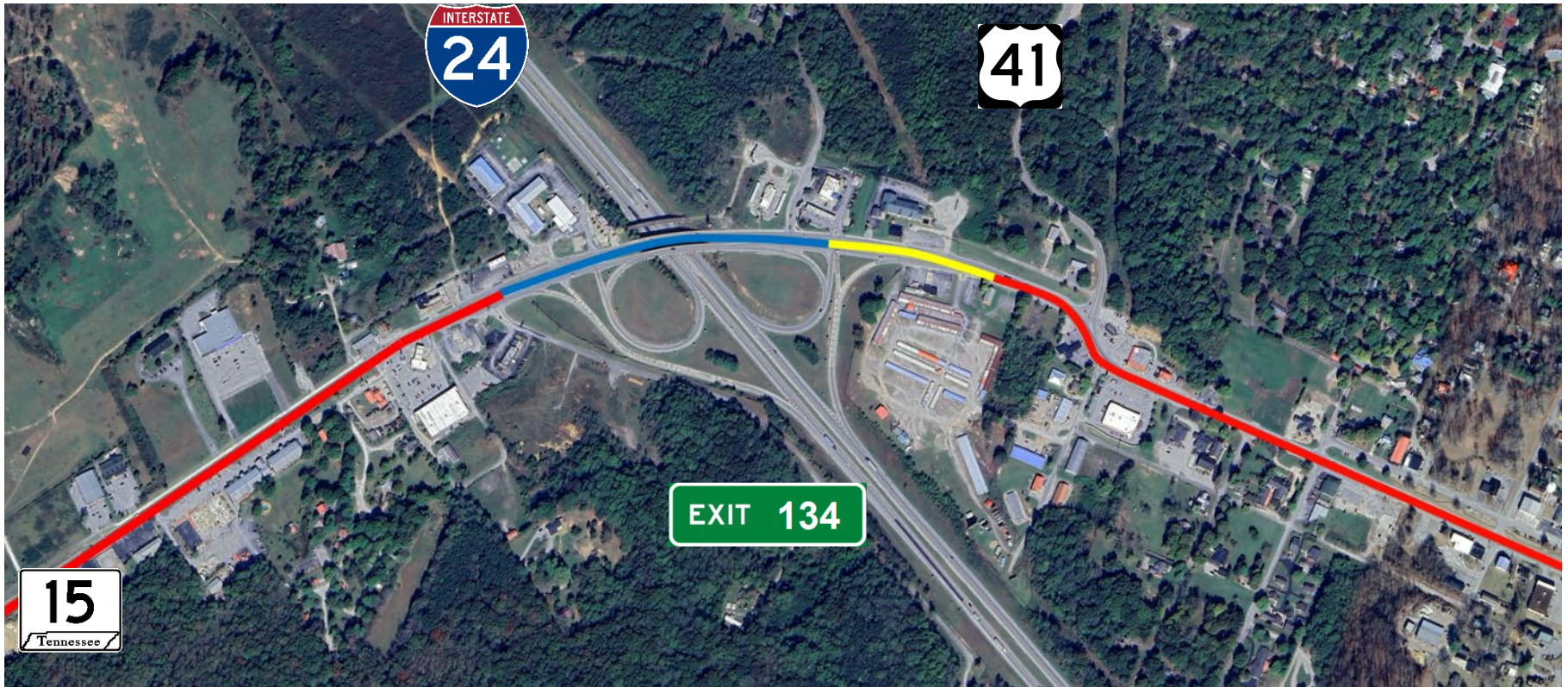
# Areas of Interest

- SR-15 at Westbound Ramps/Wrens Nest (11 Crashes)



# Areas of Interest

- SR-15 Corridor



— 3-Lanes    — 4-Lane w/ Median    — 5-Lanes

# Areas of Interest

- SR-15 Typical Section (Traffic Volume)

TRAFFIC ASSIGNMENT:

|     | BASE YEAR |      | DESIGN YEAR |       |    |      | DESIGN ROADWAY % TRUCKS |     | DESIGN AVERAGE DAILY LOADS |       |       |
|-----|-----------|------|-------------|-------|----|------|-------------------------|-----|----------------------------|-------|-------|
|     | AADT      | YEAR | AADT        | DHV   | %  | YEAR | DIR.DIST.               | DHV | AADT                       | FLEX  | RIGID |
| [1] | 9,990     | 2027 | 14,660      | 1,518 | 10 | 2047 | 55-45                   | 4   | 6                          | 360   | 536   |
| [2] | 51,810    | 2027 | 77,340      | 5,207 | 7  | 2047 | 60-40                   | 14  | 21                         | 4,589 | 7,314 |

REQUESTED BY: NAME DAVID DUNCAN DATE 3/7/23  
 DIVISION S.T.I.D.  
 ADDRESS 1000 J. K. POLK BUILDING  
NASHVILLE TN 37243

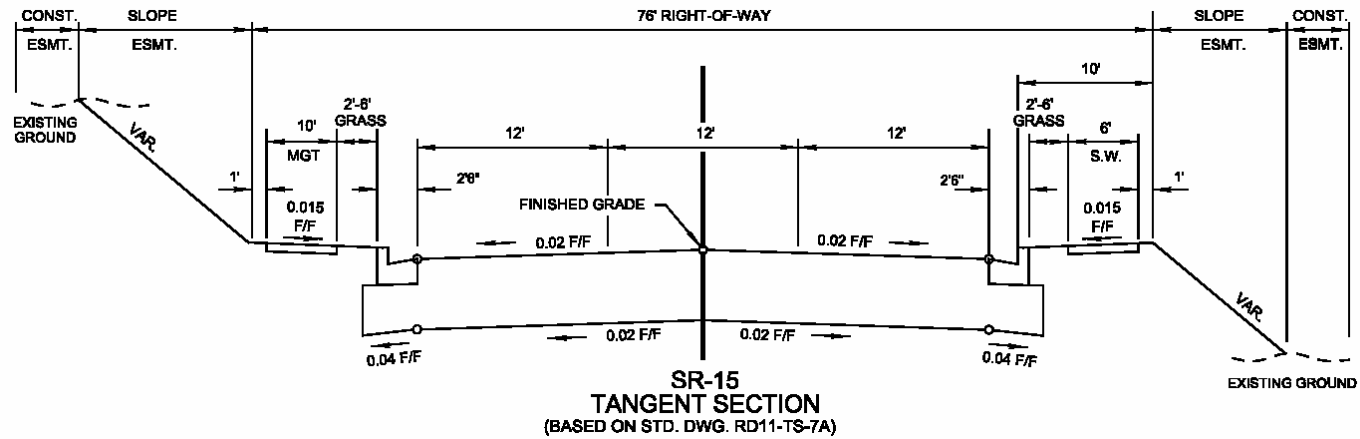
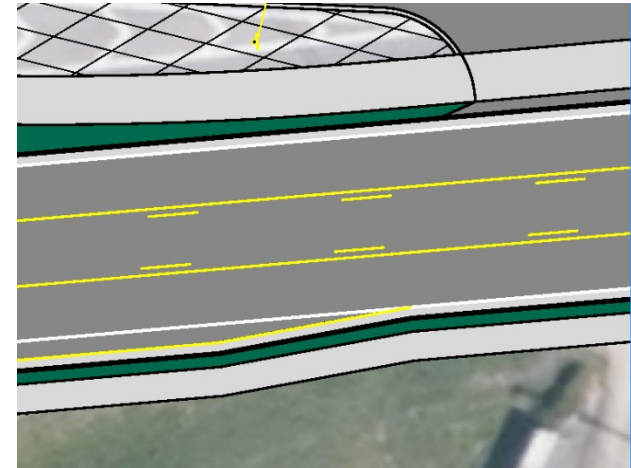
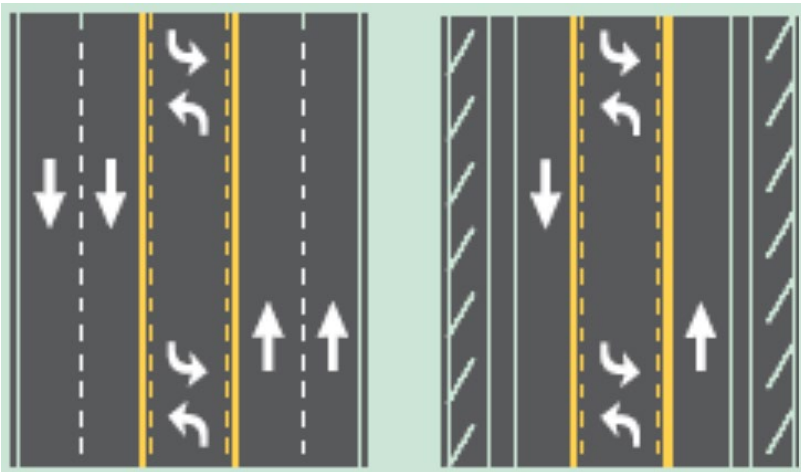
REVIEWED BY: RANDY BOGUSKIE *Randy Boguskie* DATE 3/7/2023  
 TRANSPORTATION MANAGER 1  
 SUITE 1000, JAMES K. POLK BUILDING

APPROVED BY: TONY ARMSTRONG *Tony Armstrong* DATE 3/7/2023  
 TRANSPORTATION MANAGER 2  
 SUITE 1000, JAMES K. POLK BUILDING

- Existing Lighting System

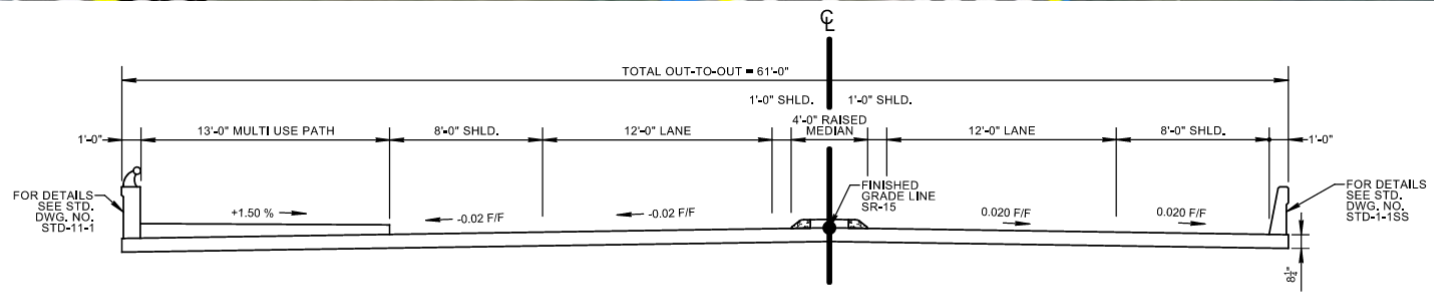
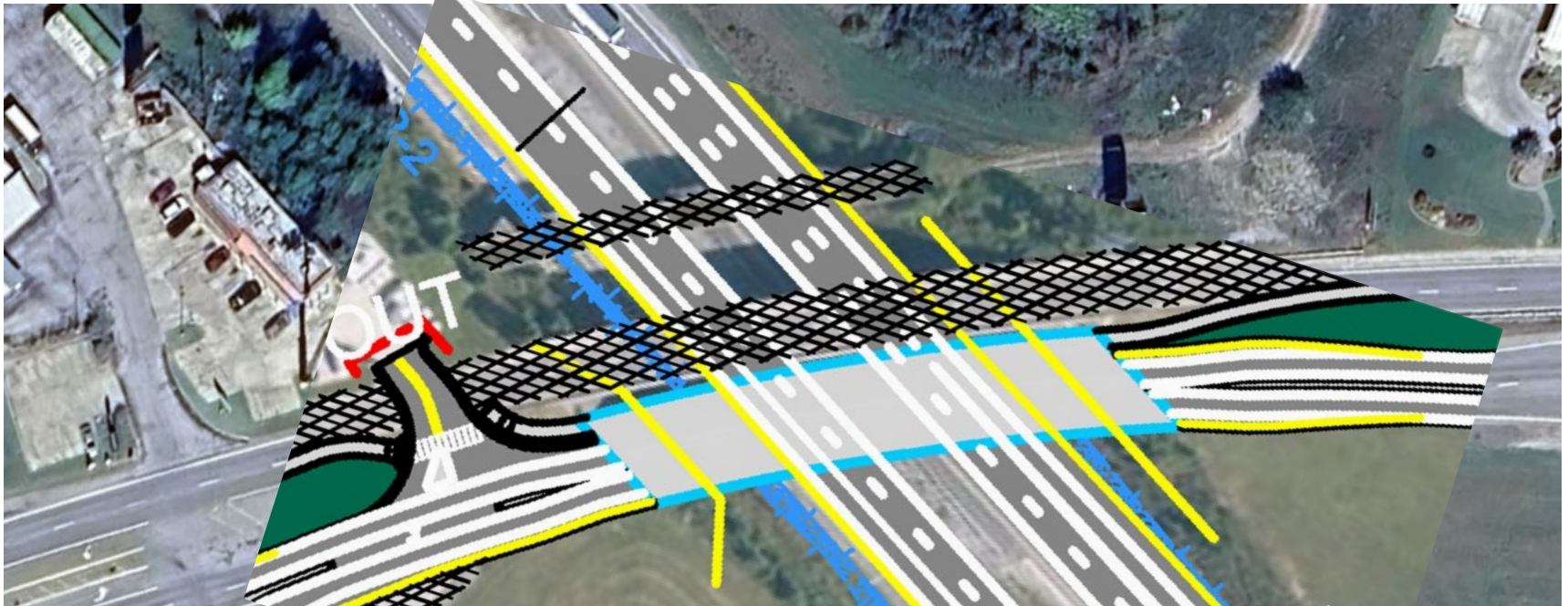
# Project Solutions – Corridor Utilization

- SR-15 Typical Section – Rebalancing to 3-lanes



# Project Solutions – New Bridge

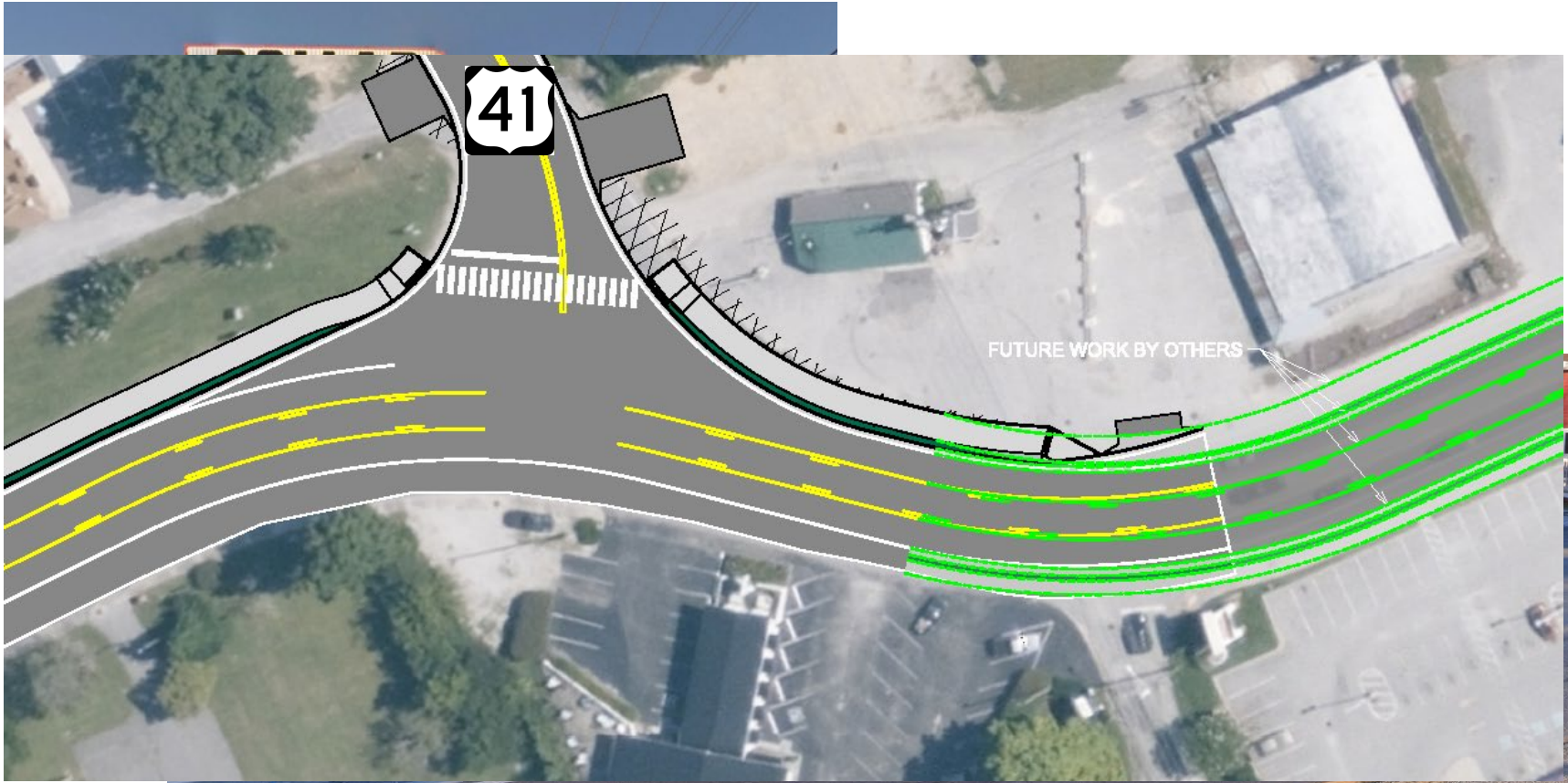
- SR-15 Typical Section – 2-lanes, New Bridge



BRIDGE SECTION  
(SR-15)

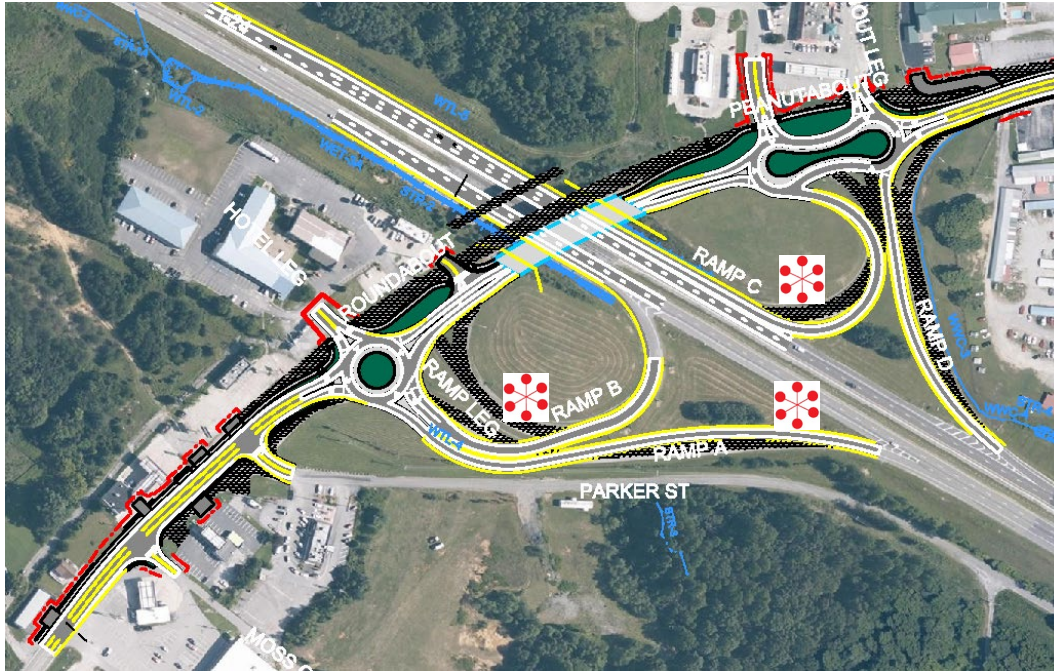
# Project Solutions – Pedestrians

- SR-15 Typical Section – Mountain Goat Trail

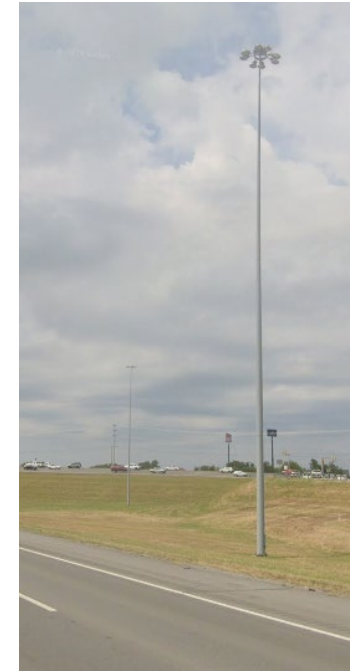


# Project Solutions – Interchange Lighting

- Combination of High Mast and Roadside



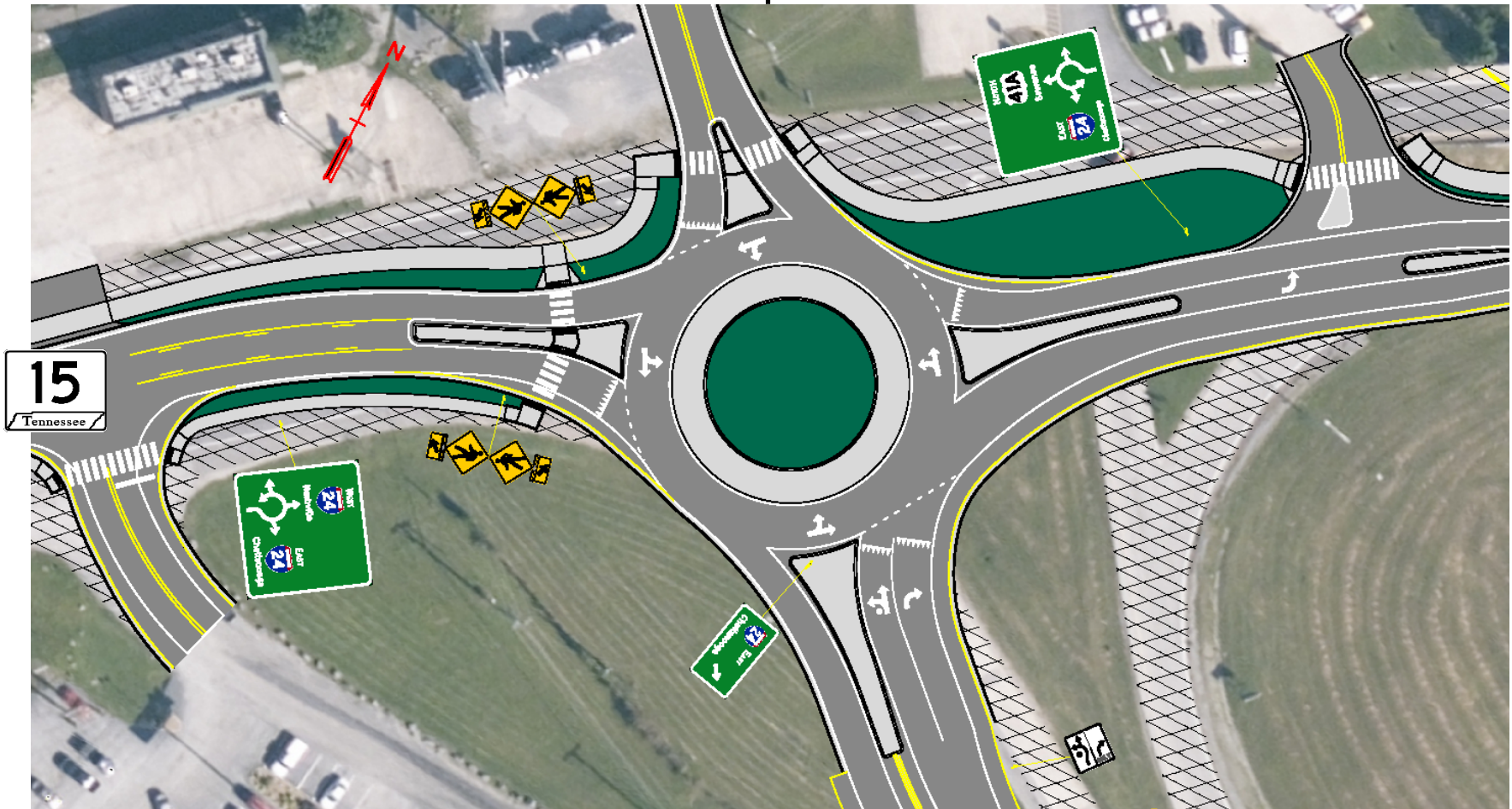
Along SR-15 and  
Interstate 24



❖ 3 Locations

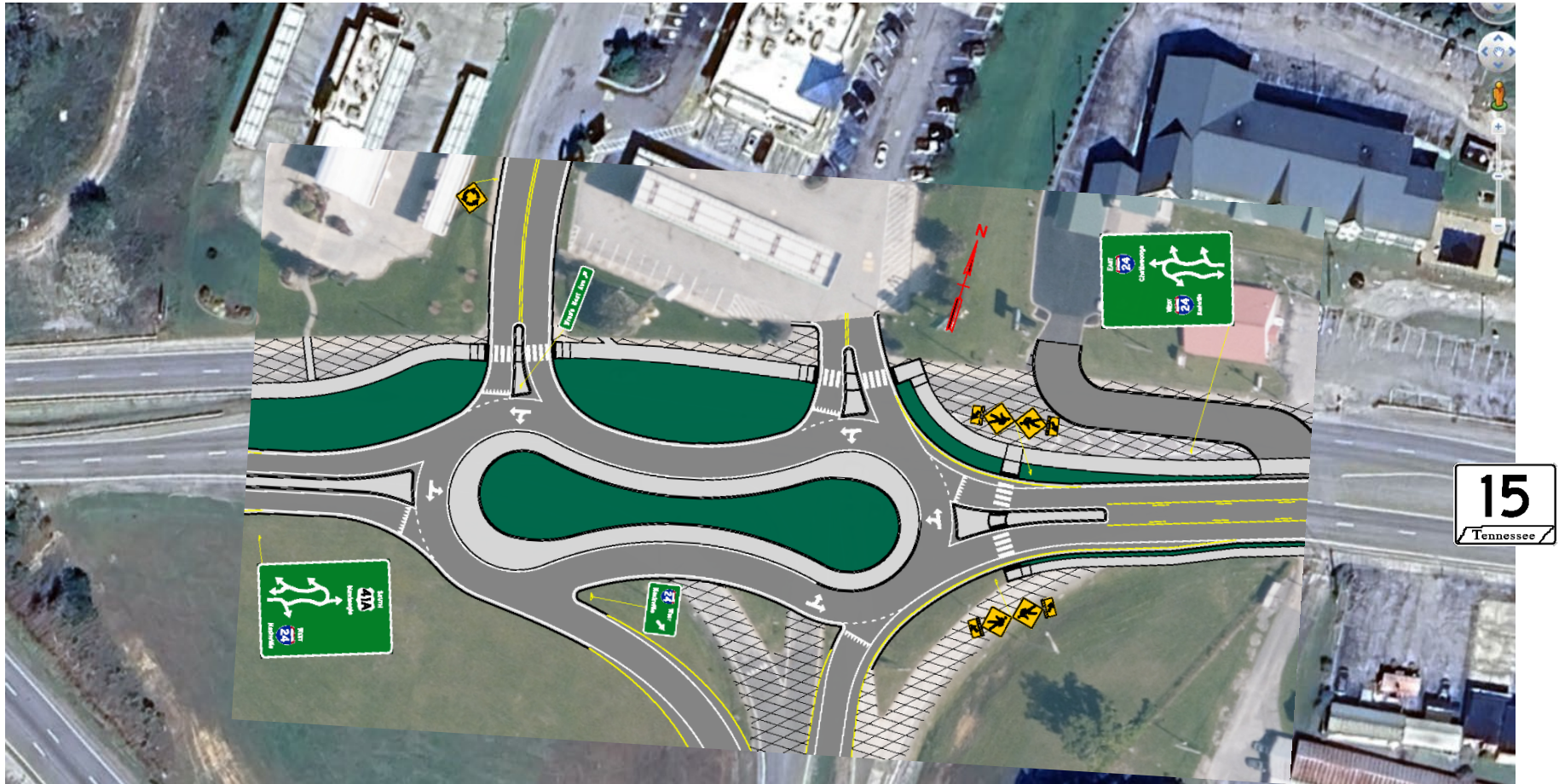
# Project Solutions – I-24 EB Intersection Control

- SR-15 / I-24 Eastbound Ramps



# Project Solutions – I-24 WB Intersections Control

- SR-15 / I-24 Westbound Ramps / Wrens Nest



# Right of Way Phase – What to Expect

TDOT will provide advance notification of proposed right-of-way acquisition.

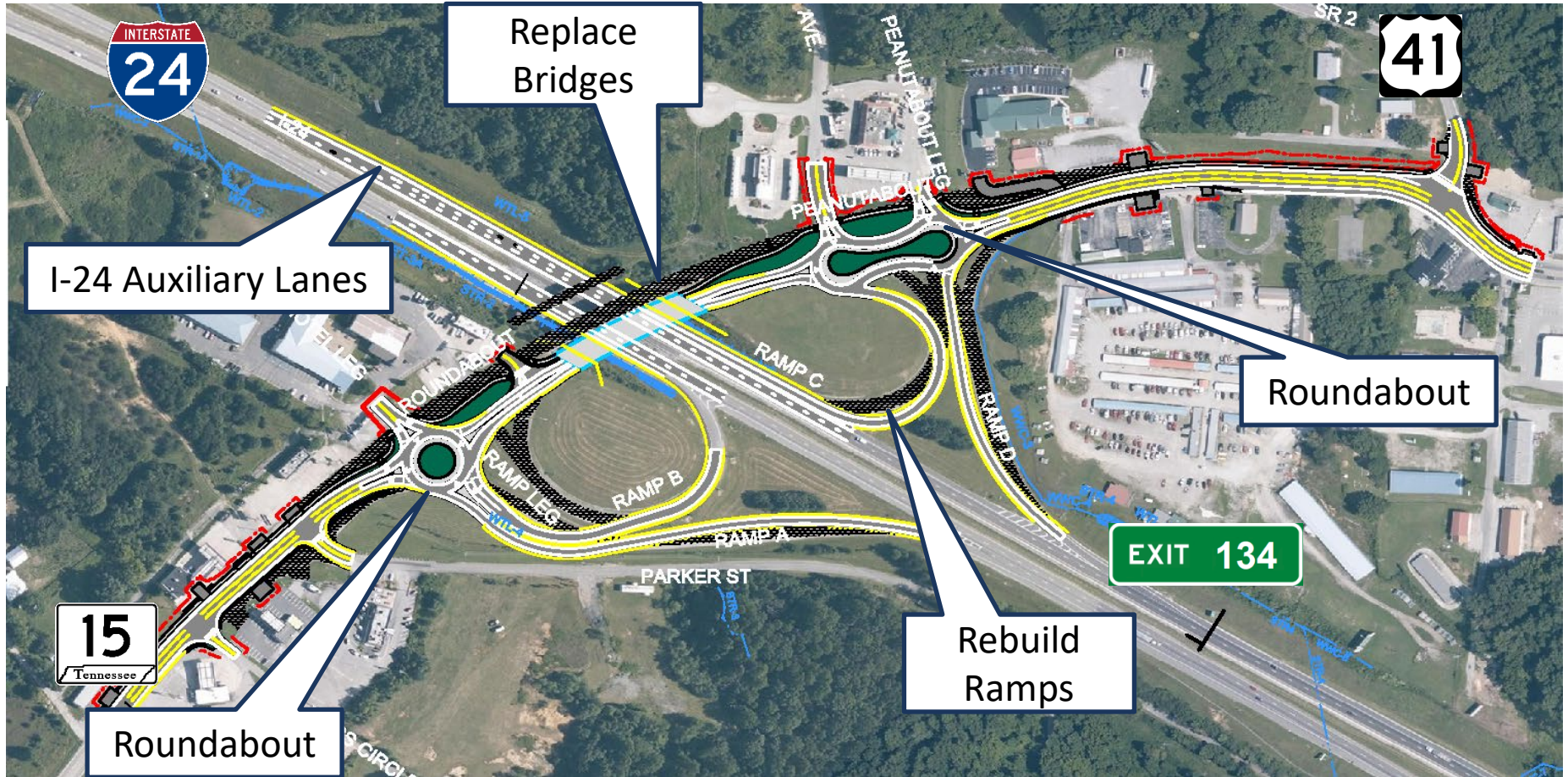
TDOT follows a federally mandated process to acquire property, which includes:

- Notice to property owners
- Independent Third-Party Conducted Appraisals
- Fair Market Value offered for proposed acquisitions
- Relocation Assistance Program for eligible affected property owners

Full details of TDOT's Right-of-Way Acquisition process can be found in the TDOT ROW Manual at:

**[www.tn.gov/content/dam/tn/tdot/right-of-way-division/ROW\\_Procedures\\_Manual.pdf](http://www.tn.gov/content/dam/tn/tdot/right-of-way-division/ROW_Procedures_Manual.pdf)**

# Project Overview



# Construction Phase – What to Expect

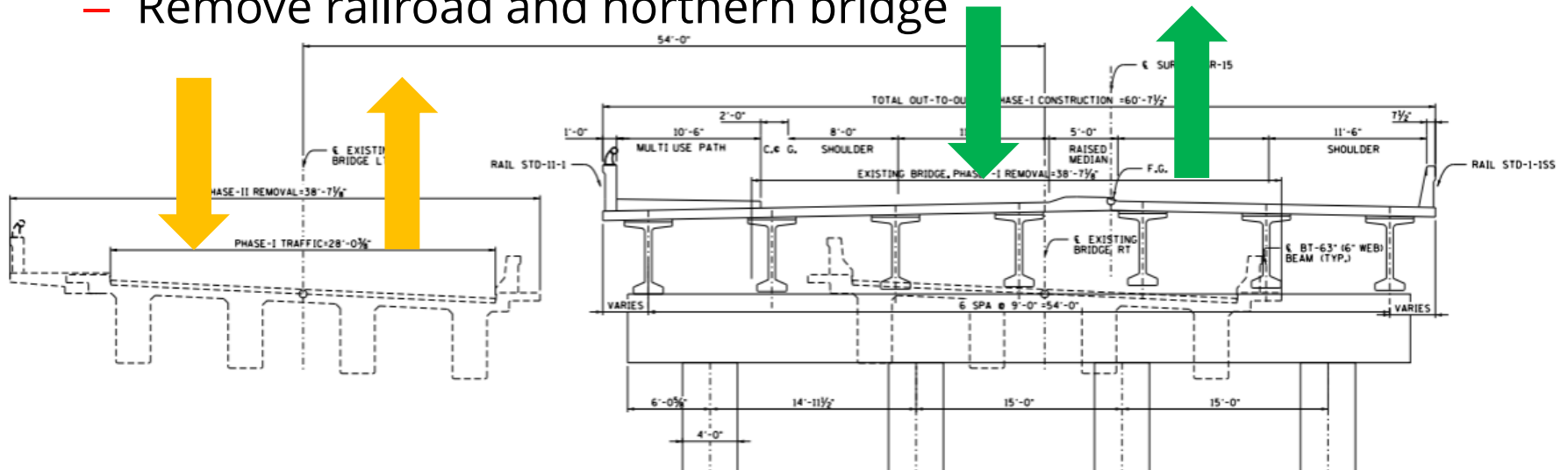
- Challenges include:
  - Removal of existing bridges
  - Limited detour options
  - Phased construction of roundabouts
- Solutions include:
  - Discussed the project with several contractors
  - Limited weekend lane reduction on I-24
  - Contract limitations of working periods
  - Coordinate with area events

# Construction Phase – What to Expect

- SR-15: Continuous full access to and from Monteagle and Sewanee
- I-24: Typically two lanes of traffic
  - Limited restrictions where I-24 may be reduced to one lane temporarily for specific work
- I-24 Ramps
  - Temporary short-term closures/detours for specific work
  - Extended directional closures/detours for bridge demolition
  - Detours to Exit 135 during closures
- US-41 will NOT be a signed detour

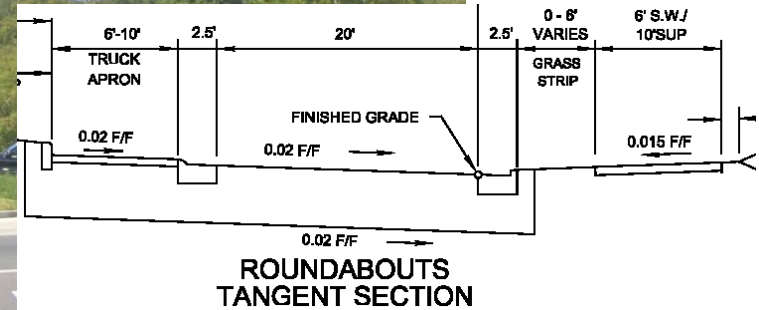
# Construction Phase – What to Expect

- SR-15 Phasing
  - Reduce to a two-lane two-way section to permit work on shoulder and bridge removal (Orange)
  - Remove southern bridge
  - Construct new bridge entirely and shift traffic to it (Green)
  - Complete and Open Roundabouts
  - Remove railroad and northern bridge



# Frequently Asked Questions

- What about emergency vehicles?
  - FHWA Bulletin - <https://highways.dot.gov/sites/fhwa.dot.gov/files/2022-06/fhwasa14098.pdf>
  - Clear width for passing where there are median islands
- What about trucks?
  - Designed with a truck apron for larger vehicles

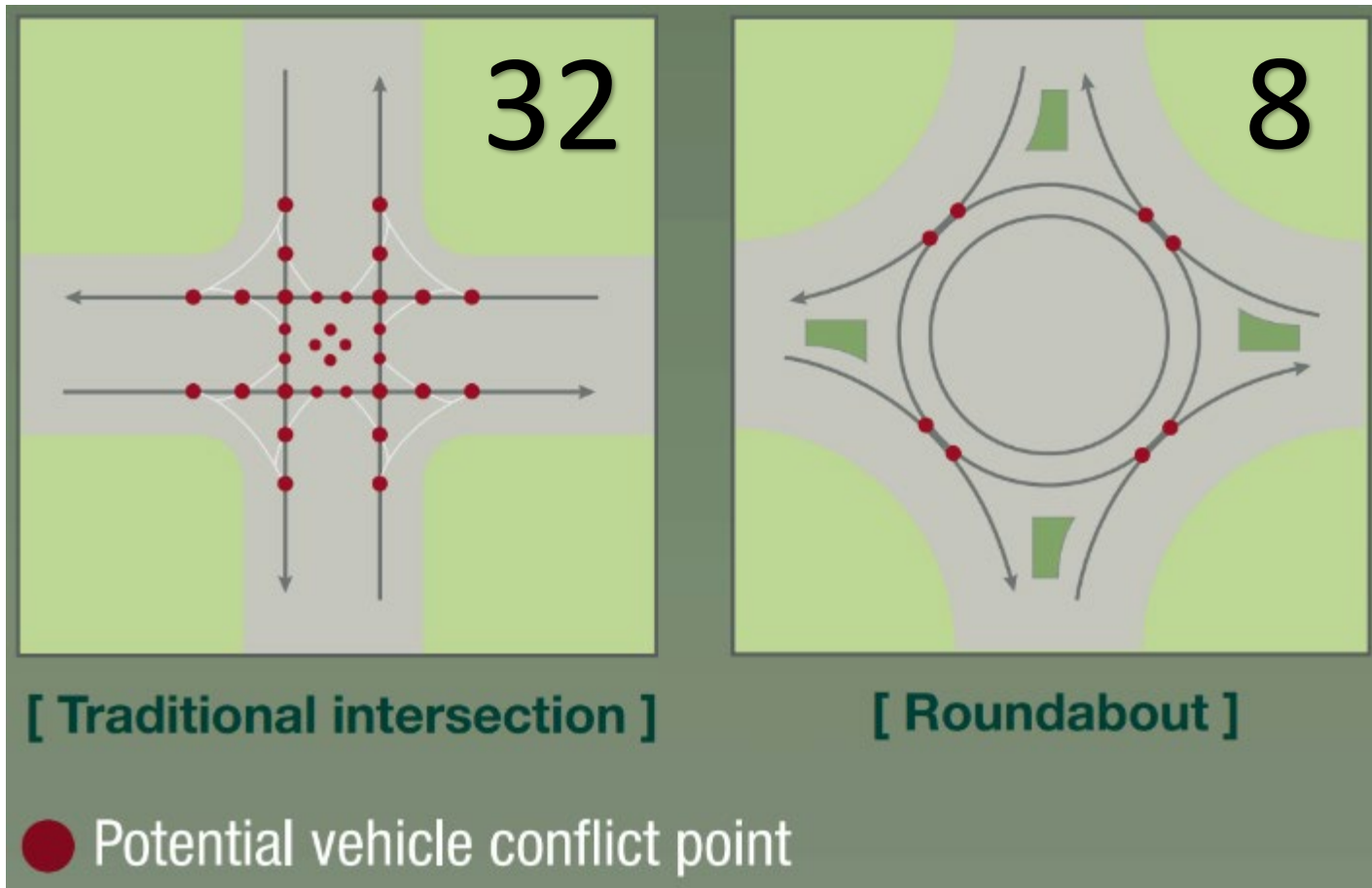


# Project Solutions - Why Roundabouts?

- Efficiency
  - Yielding Entry, Otherwise Free Flow thus less delay
  - Traffic Signals Not Warranted
  - Accommodates Trucks
- Safety
  - 90% Reduction in Fatalities, 76% Reduction in Injuries
  - 35% Reduction in All Crashes
  - Slower Speeds
  - Pedestrian Safety
  - Deters Wrong Way Driving
- Nearby Example
  - SR-50 SW of Winchester

# Project Solutions - Why Roundabouts?

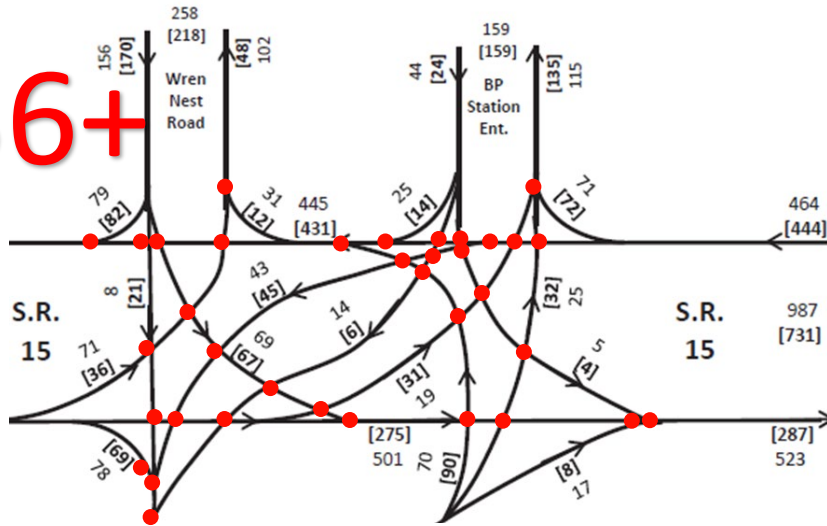
- Intersection Control – Vehicle Conflict Points



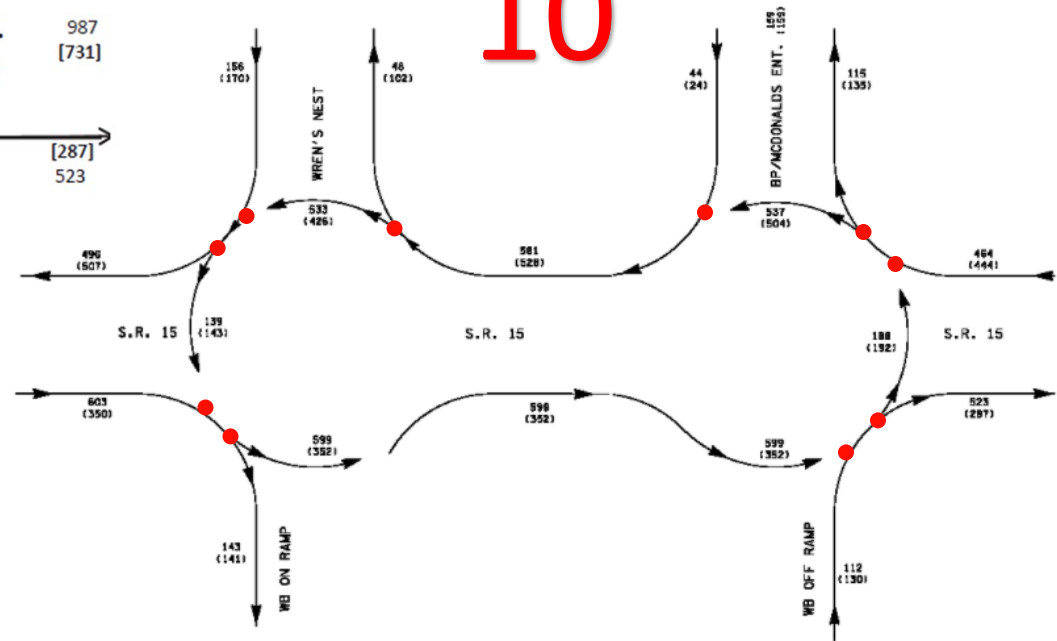
# Project Solutions - Why Roundabouts?

- Intersection Control – Vehicle Conflict Points

36+

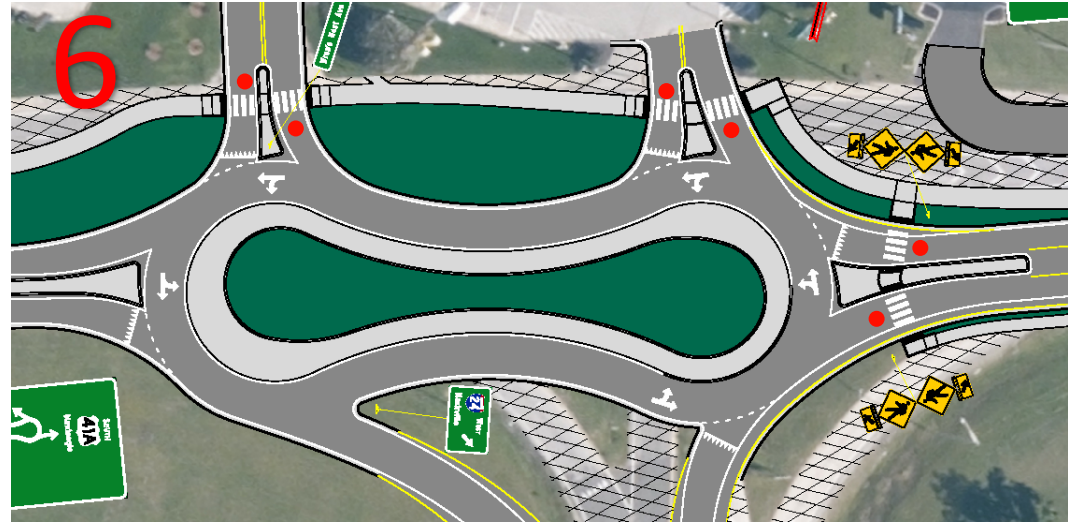
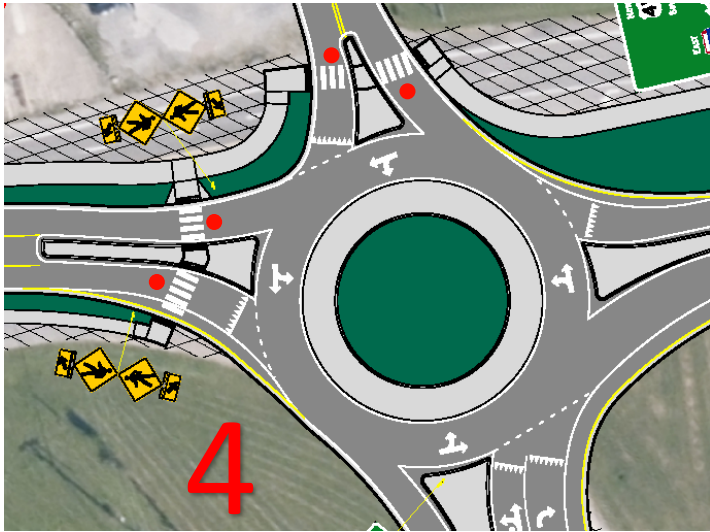


10



# Project Solutions - Why Roundabouts?

- Intersection Control – Pedestrian Conflict Points
- Flashing Beacons
- No Interstate Ramp Crossings



# Questions and Follow-up

- Contact Information / Project Information Sheets
  - Michael O'Donnell, TDOT Project Manager
  - [Email: michael.odonnell@tn.gov](mailto:michael.odonnell@tn.gov)
  - Phone: 423-634-8622
- Project Website
  - <https://www.tn.gov/tdot/projects/region-2/i-24-interchange-sr15-monteagle.html>

