



ADDENDUM NO. 1

ISSUED: **December 11, 2024**

RE: **Resurfacing of Paul Huff Parkway N.W. from SR-60 (Georgetown Rd. N.W.) to SR-2 (North Lee Highway); Stuart Road N.E. from SR-2 (North Lee Highway) to Hardwick Farms Parkway N.W.**

FROM: **City of Cleveland
190 Church Street NE
Cleveland, TN 37311**

TO: Lisa Dougan

This addendum forms a part of the Contract Documents and modifies the original Bidding Document distributed on November 19, 2024, prepared by HMB Professional Engineers, LLC to the same extent as all other documents. This addendum is issued to make certain revisions, clarifications, and/or alterations to the Plans, Specifications, and/or Contract Documents for the Project. Acknowledge receipt of this Addendum by including it in the submitted bid documents.

- I. PLEASE SEE ATTACHMENT**
- II. SUBMIT REVISED BID TAB WITH BIDDING PACKET**

1620 Gateway Boulevard,
Suite 201
Murfreesboro, TN 37129
Office: (615) 278-1500
www.hmbpe.com

- Civil Engineering
- Transportation Engineering
- Highway Engineering
- Structural Engineering
- Surveying
- Mobile Lidar
- Construction Engineering
- Construction Inspection
- Water & Wastewater
- Water Management
- Planning
- Traffic Engineering
- Signal Engineering
- Right-of-Way
- Environmental Compliance
- Environmental Permitting
- Environmental Remediation
- Archaeology & Cultural Historic
- Project Management

ESTIMATED ROADWAY QUANTITIES

This project is to be constructed under the Standard Specifications of the Tennessee Department of Transportation Dated: January 1, 2021

ITEM NO.	DESCRIPTION	UNIT	TOTAL QUANTITY	Unit Price	Amount
202-03	REMOVAL OF RIGID PAVEMENT, SIDEWALK, ETC.	S.Y.	2731		
202-08.15	REMOVAL OF CURB AND GUTTER (SEE FOOTNOTE)	L.F.	10		
208-01.05	BROOMING & DEGRASSING SHOULDERS	L.M.	1.2		
307-03.08	ASPHALT CONCRETE MIX (PG76-22) (BPMP-HM) GRADING B-M2	TON	309		
307-03.10	ASPHALT CONCRETE MIX (PG76-22) (BPMP-HM) GR CS	TON	2823		
403-02.01	TRACKLESS TACK COAT	TON	52		
411-03.10	ACS MIX (PG76-22) GRADING D	TON	6638		
415-01.01	COLD PLANING BITUMINOUS PAVEMENT	TON	9020		
502-03.24	FULL DEPTH PCC PAVEMENT REPAIR HIGH EARLY (4" WHITETOPPING)	C.Y.	8		
502-08.02	RESEALING JOINTS (SILICONE SEALANT)	L.F.	6650		
611-01.20	ADJUSTMENT OF EXISTING MANHOLE	EACH	2		
611-01.23	ADJUSTMENT OF WATER VALVE	EACH	1		
611-09.01	ADJUSTMENT OF EXISTING CATCHBASIN	EACH	6		
701-02.01	CONCRETE CURB RAMP (RETROFIT)	S.F.	525		
702-03	CONCRETE COMBINED CURB & GUTTER	C.Y.	1		
705-02.10	GUARDRAIL TRANSITION 27IN TO 31IN	EACH	7		
705-06.01	W BEAM GR (TYPE 2) MASH TL3	L.F.	825		
705-06.10	GR TERMINAL TRIALING END (TYPE 13) MASH TL-13	EACH	2		
705-06.11	GR TERMINAL TRIALING END (IN-INLINE) MASH TL-13	EACH	3		
705-06.20	TANGENT ENERGY ABSORBING TERM MASH TL-3	EACH	7		
706-01	GUARDRAIL REMOVED	L.F.	1420		
706-06.03	RADIUS RAIL	L.F.	169		
712-01	TRAFFIC CONTROL	LS	1		
712-06	SIGNS (CONSTRUCTION)	S.F.	545		
712-08.03	ARROW BOARD (TYPE C)	EACH	2		
716-02.04	PLASTIC PAVEMENT MARKING (CHANELIZATION STRIPING)	S.Y.	546		
716-02.05	PLASTIC PAVEMENT MARKING (STOP LINE)	L.F.	844		
716-02.06	PLASTIC PAVEMENT MARKING (TURN LANE ARROW)	EACH	76		
716-02.08	PLASTIC PAVEMENT MARKING (8" DOTTED LINE)	L.F.	628		
716-02.12	PLASTIC PAVEMENT MARKING (8IN LINE)	L.M.	2		
716-04.01	PLASTIC PAVEMENT MARKING (STRAIGHT-TURN ARROW)	EACH	1		
716-04.02	PLASTIC PAVEMENT MARKING (DOUBLE-TURN ARROW)	EACH	1		
716-04.05	PLASTIC PAVEMENT MARKING (STRAIGHT ARROW)	EACH	5		
716-04.12	PLASTIC PAVEMENT MARKING (YIELD LINE)	S.F.	108		
716-05.01	PAINTED PAVEMENT MARKING (4" LINE)	L.M.	8.6		
716-08.32	HYDROBLAST REMOVAL OF PAVEMENT MARKING (6" LINES & STOP BARS)	L.F.	2203		
716-08.33	HYDROBLAST REMOVAL OF PAVEMENT MARKING (ARROWS)	EACH	8		
716-09.86	CONTRAST PAVEMENT MARKING 6"	L.M.	0.6		
716-09.89	CONTRAST PAVEMENT MARKING 12"	L.F.	385		
716-13.02	SPRAY THERMO PVMT MRKING (60 MIL) (6IN LINE)	L.M.	12.7		
717-01	MOBILIZATION	LS	1		
TOTAL					

TOTAL WRITTEN

ROADWAY INDEX

SHEET NAME	SHEET NO.
TITLE SHEET	1
ROADWAY INDEX AND STANDARD ROADWAY DRAWINGS.....	1A
ESTIMATED ROADWAY QUANTITIES	2
TYPICAL SECTIONS.....	2B, 2B1
TYPICAL SECTIONS AND PAVEMENT SCHEDULE	2B2
GENERAL NOTES.....	2C
ENVIRONMENTAL NOTES.....	2E
TABULATED QUANTITIES	2F, 2F1
DETAIL SHEET.....	2G
UTILITY NOTES AND UTILITY OWNERS.....	3
PAVEMENT MARKING PLAN.....	4 – 9
PAVEMENT EDGE DROP OFF NOTES	T-1

NOTE: THE ALPHABETICAL LETTERS "I", "O" & "Q" ARE NOT USED IN THE NUMBERING OF SHEETS.

NO PROJECT COMMITMENTS SHEET (1B) INCLUDED IN THIS PLAN SET.

STANDARD ROADWAY DRAWINGS

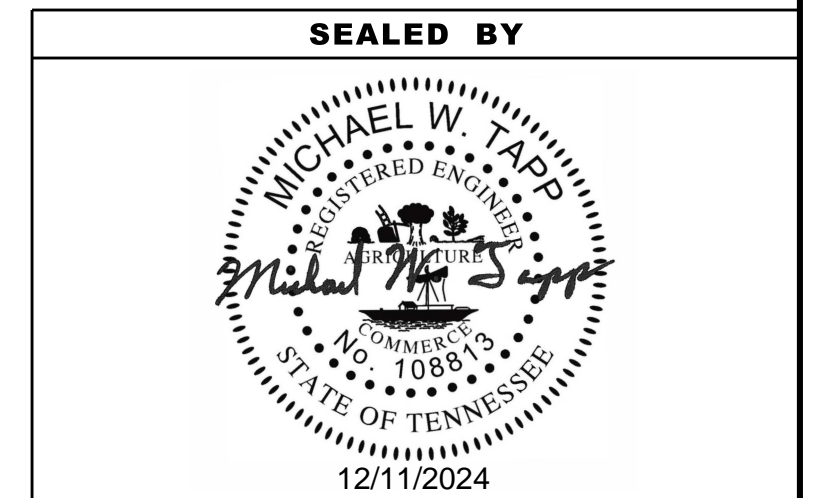
DWG.	REV.	DESCRIPTION
10-100.00 STANDARD ROADWAY TITLE SHEET, ABBREVIATIONS, AND LEGENDS		
RD-A-1	02-20-20	STANDARD ABBREVIATIONS A THROUGH L
RD-A-2		STANDARD ABBREVIATIONS M THROUGH Z
RD-L-1	02-20-20	STANDARD LEGEND
10-103.00 CATCH BASINS AND MANHOLES		
D-CB-12S	02-20-20	STANDARD RECTANGULAR CONCRETE NO. 12 CATCH BASIN
D-CBB-12A	06-28-19	TYPE 'B' CAST IRON FRAME, GRATE & VERTICAL INLET DETAILS FOR NOS. 10, 12, 14, 16, & 17 TYPE CATCH BASINS
10-105.00 ROADWAY, PAVEMENT APPURTANANCES, AND FENCES		
RP-VC-10	03-04-21	VERTICAL CONCRETE CURB AND CURB AND GUTTER (FOR 8" TO 12" GUTTER DEPTH)
RP-VC-11	03-04-21	VERTICAL CONCRETE CURB AND CURB AND GUTTER (FOR 6" & 7" GUTTER DEPTH)
10-106.00 MULTIMODAL		
MM-CR-1	06-28-19	DETECTABLE WARNING SURFACE PLACEMENT ON CURB RAMPS
MM-CR-5	06-28-19	SINGLE CROSSING CURB RAMP IN CURVE
10-107.00 SAFETY DESIGN AND GUARDRAILS		
S-CZ-1	06-28-19	CLEAR ZONE CRITERIA
S-PL-1	03-01-23	SAFETY PLAN FOR BARRIER LENGTH OF NEED
S-PL-1A	03-01-23	SAFETY PLAN FOR BARRIER LENGTH OF NEED (FOR RIGID OBJECTS)
S-PL-3	03-01-23	SAFETY PLAN MINIMUM INSTALLATION AT BRIDGE ENDS
S-PL-6	06-15-21	SAFETY PLAN SAFETY HARDWARE PLACEMENT ON OUTSIDE EDGE
S-GR31-1	06-15-21	GUARDRAIL DETAILS
S-GR31-1A	06-28-19	GUARDRAIL AND BLOCK-OUT DETAILS
S-GR31-1B		GUARDRAIL FASTENING HARDWARE
S-GR31-1C	07-07-23	GUARDRAIL GENERAL NOTES AND POST DETAILS
S-GR31-1D	03-01-23	GUARDRAIL POST PLACEMENT IN ROCK
S-GRS-4	05-04-22	SPECIAL CASE GUARDRAIL HEIGHT TRANSITION DETAIL
S-GRS-6		SPECIAL CASE FLEXIBILTLY ON GUARDRAIL POST INSTALLATIONS
S-GRT-2	06-28-19	TYPE 38 GUARDRAIL END TERMINAL
S-GRT-2R	06-28-19	EARTH PAD FOR TYPE 38 AND TYPE 21 TERMINAL (RETROFIT)
S-GRA-3	06-15-21	TYPE 13 GUARDRAIL ANCHOR
S-GRA-4	03-01-23	IN-LINE GUARDRAIL ANCHOR TO PRIVATE DRIVE
S-PL-2M		SAFETY PLAN AT SIDEROADS OR PRIVATE DRIVES

10-108.00 DESIGN - TRAFFIC CONTROL

DWG.	REV.	DESCRIPTION
T-M-1	06-28-19	DETAILS OF PAVEMENT MARKINGS FOR CONVENTIONAL ROADS AND MARKING ABBREVIATIONS
T-M-2	01-09-24	DETAILS OF PAVEMENT MARKINGS FOR CONVENTIONAL ROADS
T-M-3	07-07-23	MARKING STANDARDS FOR TRAFFIC ISLANDS, PAVED SHOULDERS AND MEDIANS FOR CONVENTIONAL ROADS
T-M-4	07-17-20	STANDARD INTERSECTION PAVEMENT MARKINGS
T-M-5	03-01-23	MARKING DETAIL FOR FREEWAYS
T-WZ-60		FREEWAY RESURFACING SIGNING LAYOUT
T-WZ-FAB1		FLASHING YELLOW ARROW BOARD

TYPE	YEAR	PROJECT NO.	SHEET NO.
R.O.W.	2023	STP-M-NH-9203(26)	1A
CONST.	2024	STP-M-NH-9203(26)	1A

REV. 12-11-24: REMOVED STD. DWGS. S-GRS-7 AND S-GRS-7A. ADDED STD. DWGS. S-GRA-4 AND S-PL-2M.



CITY OF CLEVELAND

ROADWAY INDEX
AND
STANDARD
ROADWAY
DRAWINGS

TYPE	YEAR	PROJECT NO.	SHEET NO.
R.O.W.	2023	STP-M-NH-9203(26)	2
CONST.	2024	STP-M-NH-9203(26)	2

REV. 12-11-24: ELIMINATED ITEM NOS. 705-06.17, 705-06.19, AND 706-10.26. ADDED ITEM NOS. 705-06.10, 705-06.11, AND 706-06.03. REVISED QUANTITY FOR 705-06.01.

ESTIMATED ROADWAY QUANTITIES

ITEM NO.	DESCRIPTION	UNIT	QUANTITY
			06LPLM-F3-082
(1)	202-03 REMOVAL OF RIGID PAVEMENT, SIDEWALK, ETC.	S.Y.	2731
(2)	202-08.15 REMOVAL OF CURB AND GUTTER (SEE FOOTNOTE)	L.F.	10
	208-01.05 BROOMING & DEGRASSING SHOULDERS	L.M.	1.2
	307-03.08 ASPHALT CONCRETE MIX (PG76-22) (BPMB-HM) GRADING B-M2	TON	309
	307-03.10 ASPHALT CONCRETE MIX (PG76-22)(BPMB-HM) GR CS	TON	2823
(3)	403-02.01 TRACKLESS TACK COAT	TON	52
	411-03.10 ACS MIX(PG76-22) GRADING D	TON	6638
(4)	415-01.01 COLD PLANING BITUMINOUS PAVEMENT	TON	9020
(5)	502-03.24 FULL DEPTH PCC PAVEMENT REPAIR HIGH EARLY (4" WHITETOPPING)	C.Y.	8
(6)	502-08.02 RESEALING JOINTS (SILICONE SEALANT)	L.F.	6650
(7)	611-01.20 ADJUSTMENT OF EXISTING MANHOLE	EACH	2
(7)	611-01.23 ADJUSTMENT OF WATER VALVE	EACH	1
(7)	611-09.01 ADJUSTMENT OF EXISTING CATCHBASIN	EACH	6
(7)	701-02.01 CONCRETE CURB RAMP (RETROFIT)	S.F.	525
(2)	702-03 CONCRETE COMBINED CURB & GUTTER	C.Y.	1
	705-02.10 GUARDRAIL TRANSITION 27IN TO 31IN	EACH	7
	705-06.01 W BEAM GR (TYPE 2) MASH TL3	L.F.	825
	705-06.10 GR TERMINAL TRAILING END (TYPE 13) MASH TL3	EACH	2
	705-06.11 GR TERMINAL (IN-INLINE) MASH TL3	EACH	3
	705-06.20 TANGENT ENERGY ABSORBING TERM MASH TL-3	EACH	7
(8)	706-01 GUARDRAIL REMOVED	L.F.	1420
	706-06.03 RADIUS RAIL	L.F.	169
	712-01 TRAFFIC CONTROL	LS	1
(9)	712-06 SIGNS (CONSTRUCTION)	S.F.	545
	712-08.03 ARROW BOARD (TYPE C)	EACH	2
(10)(11)	716-02.04 PLASTIC PAVEMENT MARKING(CHANNELIZATION STRIPING)	S.Y.	546
(10)(11)	716-02.05 PLASTIC PAVEMENT MARKING (STOP LINE)	L.F.	844
(10)(11)	716-02.06 PLASTIC PAVEMENT MARKING (TURN LANE ARROW)	EACH	76
(10)	716-02.08 PLASTIC PAVEMENT MARKING (8" DOTTED LINE)	L.F.	628
(10)	716-02.12 PLASTIC PAVEMENT MARKING (8IN LINE)	L.M.	2
(10)(11)	716-04.01 PLASTIC PAVEMENT MARKING (STRAIGHT-TURN ARROW)	EACH	1
(10)(11)	716-04.02 PLASTIC PAVEMENT MARKING(DOUBLE TURNING ARROW)	EACH	1
(10)(11)	716-04.05 PLASTIC PAVEMENT MARKING (STRAIGHT ARROW)	EACH	5
(10)(11)	716-04.12 PLASTIC PAVEMENT MARKING (YIELD LINE)	S.F.	108
	716-05.01 PAINTED PAVEMENT MARKING (4" LINE)	L.M.	8.6
(12)	716-08.32 HYDROBLAST REMOVAL OF PAVEMENT MARKING (6" LINES & STOP BARS)	L.F.	2203
	716-08.33 HYDROBLAST REMOVAL OF PAVEMENT MARKING (ARROWS)	EACH	8
(10)(13)	716-09.86 CONTRAST PAVEMENT MARKING 6"	L.M.	0.6
(10)	716-09.89 CONTRAST PAVEMENT MARKING 12"	L.F.	385
(10)(14)	716-13.02 SPRAY THERMO PVMT MRKNG (60 MIL) (6IN LINE)	L.M.	12.7
	717-01 MOBILIZATION	LS	1

FOOTNOTES

- (1) REMOVAL OF 4" WHITETOPPING AT THE INTERSECTION OF PAUL HUFF PKWY AND MOUSE CREEK RD AND REMOVAL OF DAMAGED PANELS AT INTERSECTION OF PAUL HUFF PKWY/ STUART RD. AND N. LEE HWY.
- (2) FOR THE ADJUSTMENT OF EXISTING CURB INLET AND CURB AND GUTTER LOCATED APPROX 200 L.F. EAST OF PEERLESS ROAD NW AT 69+91, 32' LT. CURB INLET IS TO BE ADJUSTED DOWN AND THE CURB AND GUTTER REWORKED TO MATCH THE GENERAL SLOPE OF CURB AND GUTTER ALONG PAUL HUFF PKWY.
- (3) DUE TO EXISTING PAVEMENT CONDITIONS, ITEM CALCULATED AT A RATE OF 0.12 GAL/SY FOR MILLED SURFACES.
- (4) ALL MILLED SURFACES TO BE VACUUMED AND FREE OF DUST AND DEBRIS PRIOR TO INSTALLATION OF ITEM NO. 307-03.10, ASPHALT CONCRETE MIX (PG76-22) (BPMB) GR CS. HARD TO CLEAN CRACKS MAY REQUIRE THE USE OF A HOSE OR OTHER METHODS FOR PROPER CLEANING.
- (5) FOR 4' X 4' CONCRETE WHITETOPPING SQUARES THAT NEED REPAIR OR REPLACEMENT AT NORTH LEE HWY INTERSECTION. SEE REPAIR PLAN AND DETAIL ON SHEET 2G.
- (6) FOR SEALING OF LONGITUDINAL AND TRANSVERSE JOINTS FOR WHITETOPPING AT NORTH LEE HWY INTERSECTION.
- (7) SEE SHEET 2F1 FOR LOCATIONS.
- (8) REMOVED GUARDRAIL TO BECOME PROPERTY OF CONTRACTOR.
- (9) SEE SIGN TABULATION BLOCK ON SHEET 2F.
- (10) TO BE USED FOR PERMANENT PAVEMENT MARKING ONLY.
- (11) CONTRACTOR MAY ELECT TO SUBSTITUTE PREFORMED PLASTIC FOR THERMOPLASTIC. PREFORMED PLASTIC SHALL BE PAID FOR AT THE SAME UNIT PRICE AS BID FOR THERMOPLASTIC.
- (12) INCLUDES 288 L.F. FOR STOP BARS AND 1915 L.F FOR ALL 6" LINES ON CONCRETE BRIDGE AND WHITETOPPING AT N. LEE HIGHWAY INTERSECTION.
- (13) FOR PAVEMENT MARKINGS ON CONCRETE.
- (14) INCLUDES 1.22 LM FOR 6" SBWL, 4.51 LM FOR 6" SSSL, 6.19 LM FOR 6" DSYL, AND 0.78 LM FOR 6" SBYL.

SEALED BY



CITY OF CLEVELAND

ESTIMATED
ROADWAY
QUANTITIES

TYPE	YEAR	PROJECT NO.	SHEET NO.
R.O.W.	2023	STP-M-NH-9203(26)	2F
CONST.	2024	STP-M-NH-9203(26)	2F

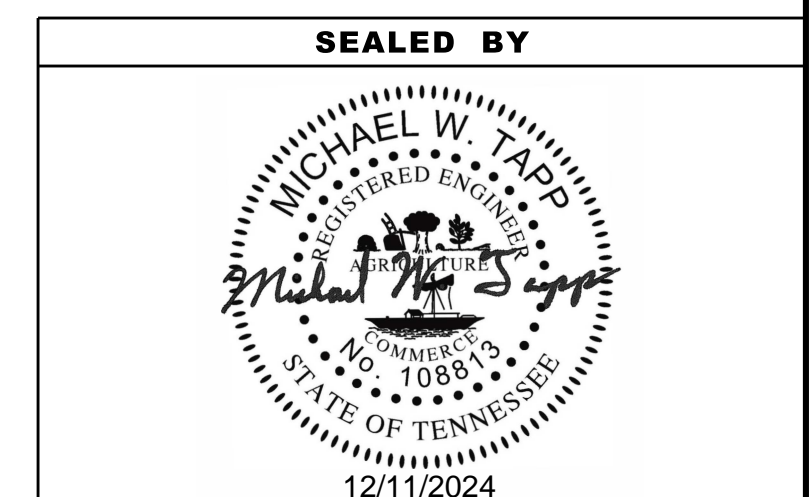
REV. 12-11-24: ELIMINATED ITEM NOS. 705-06.17, 705-06.19, AND 706-10.26. ADDED ITEM NOS. 705-06.10, 705-06.11, AND 706-06.03. REVISED QUANTITY FOR 705-06.01.

PAVEMENT MARKING QUANTITIES			
ITEM NO.	DESCRIPTION	UNIT	QUANTITY
			06LPLM-F3-082
716-02.04	PLASTIC PAVEMENT MARKING(CHANNELIZATION STRIPING)	S.Y.	546
716-02.05	PLASTIC PAVEMENT MARKING (STOP LINE)	L.F.	844
716-02.06	PLASTIC PAVEMENT MARKING (TURN LANE ARROW)	EACH	76
716-02.08	PLASTIC PAVEMENT MARKING (8" DOTTED LINE)	L.F.	628
716-02.12	PLASTIC PAVEMENT MARKING (8IN LINE)	L.M.	2
716-04.01	PLASTIC PAVEMENT MARKING (STRAIGHT-TURN ARROW)	EACH	1
716-04.02	PLASTIC PAVEMENT MARKING(DOUBLE TURNING ARROW)	EACH	1
716-04.05	PLASTIC PAVEMENT MARKING (STRAIGHT ARROW)	EACH	5
716-04.12	PLASTIC PAVEMENT MARKING (YIELD LINE)	S.F.	108
716-08.32	HYDROBLAST REMOVAL OF PAVEMENT MARKING (6" LINE/STOP BAR)	L.F.	2203
716-08.33	HYDROPLAST REMOVAL OF PAVEMENT MARKING (ARROWS)	EACH	8
716-09.86	CONTRAST PAVEMENT MARKING 6"	L.M.	0.6
716-09.89	CONTRAST PAVEMENT MARKING 12"	L.F.	385
716-13.02	SPRAY THERMO PVMT MRKNG (60 MIL) (6IN LINE)	L.M.	12.7

TRAFFIC CONTROL SIGN TABULATION (RESURFACING)					
M.U.T.C.D.	LEGEND \ DESCRIPTION	SIZE IN INCHES	S.F.	TOTAL NUMBER REQUIRED	ITEM NO. 712-06 S.F.
SIGN NO.		L x W			
G20-1	ROAD WORK NEXT 2.7 MILES	36" x 36"	9	2	18
G20-2	END ROAD WORK	36" x 18"	5	19	86
R2-1	SPEED LIMIT	36" x 24"	6	6	36
W8-11	UNEVEN LANES	36" x 36"	9	6	54
W8-15	GROOVED PAVEMENT	36" x 36"	9	6	54
W8-15P	MOTORCYCLE (PLAQUE)	24" x 18"	3	6	18
W20-1	ROAD WORK AHEAD	36" x 36"	9	19	171
W20-1	ROAD WORK 1/2 MILE	36" x 36"	9	1	9
W20-1	ROAD WORK 1 MILE	36" x 36"	9	1	9
W20-1	ROAD WORK 300 FT	36" x 36"	9	1	9
W20-1	ROAD WORK 1000 FT	36" x 36"	9	1	9
(1) W20-7	FLAGGER	36" x 36"	9	2	18
W21-2	BE PREPARED TO STOP	36" x 36"	9	4	36
W3-4	FRESH OIL	36" x 36"	9	2	18
				TOTAL	545

(1) FLAGGER SIGN TO BE REMOVED OR COVERED WHEN A FLAGGER IS NOT CONTROLLING TRAFFIC.

PROPOSED GUARDRAIL (RESURFACING)												
SIDE	LOG MILE		GUARDRAIL			TERMINAL ANCHORS			GUARDRAIL REMOVED	REMARKS		
	LT	RT	FROM	TO	GUARDRAIL TRANSITION TO EXIST. (25') 705-02.10 (EACH)	W BEAM GR (TYPE 2) MASH TL3 705-06.01 (L.F.)	RADIUS RAIL 706-06.03 (L.F.)	TYPE 13 MASH TL3 (9.375') 705-06.10 (EACH)			IN-LINE MASH TL3 705-06.11 (EACH)	TYPE 38 MASH TL3 (46.875') 705-06.20 (EACH)
X			52+26.54	52+97.89	1					1	63.00	NW OF I-75 / EXIST. WALL CONNECTION TO REMAIN
X	X		52+26.54	52+97.89	1					1	49.00	SW OF I-75 / EXIST. WALL CONNECTION TO REMAIN
X			54+80.81	55+52.68	1					1	49.00	NE OF I-75 / EXIST. WALL CONNECTION TO REMAIN
	X		54+80.81	55+52.68	1					1	48.00	SE OF I-75 / EXIST. WALL CONNECTION TO REMAIN
X			92+74.39	94+92.33	1	143.75	68.75		1	1	295.00	TIE IN TO EXIST. GUARDRAIL ON FREEDOM PKWY
	X		94+36.91	96+46.29	1	137.50				1	208.00	MOUSE CREEK / EXIST. BRIDGE CONNECTION TO REMAIN
X			98+33.96	99+05.39	1					1	72.00	MOUSE CREEK / EXIST. BRIDGE CONNECTION TO REMAIN
	X		121+89.48	127+61.99		543.75	100	2	2		636.00	WALMART
TOTALS					7	825	169	2	3	7	1420	

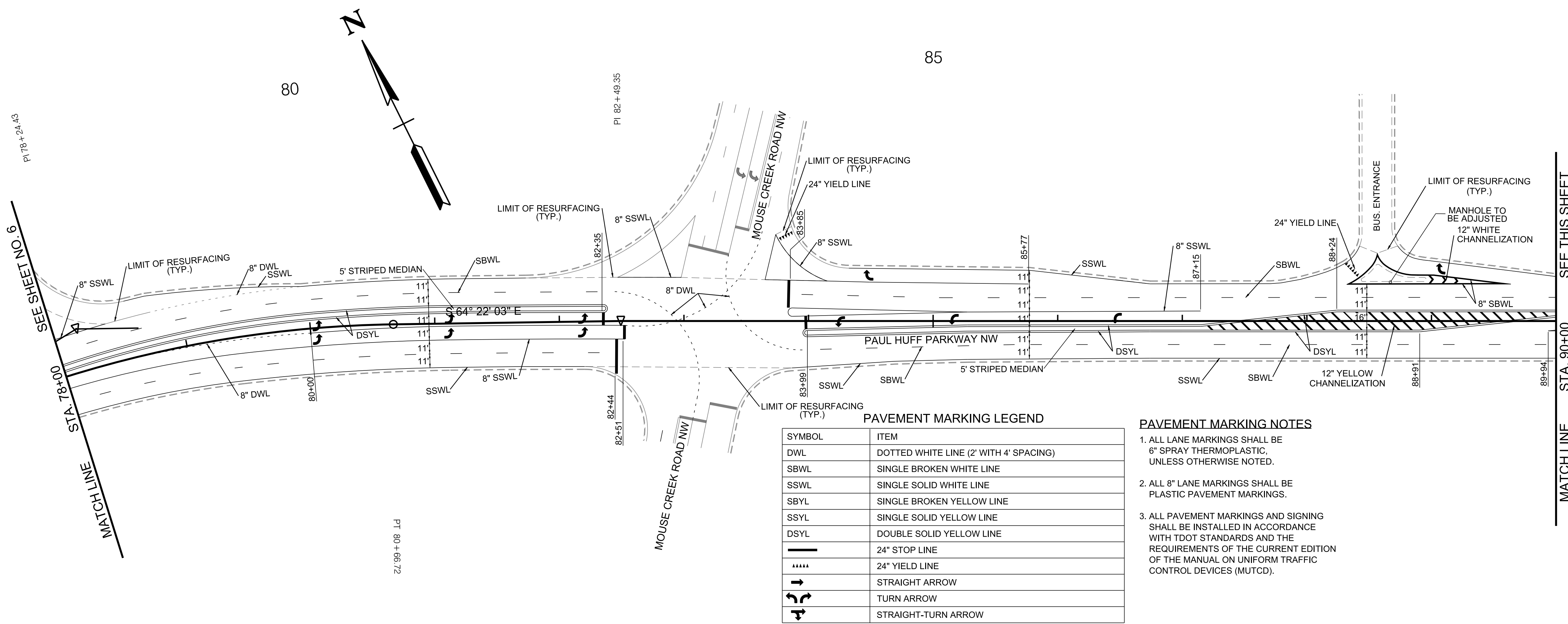


CITY OF CLEVELAND

TABULATED QUANTITIES

TYPE	YEAR	PROJECT NO.	SHEET NO.
CONST.	2024	STP-M-NH-9203(26)	7

REV. 12-11-24: REVISED GUARDRAIL.

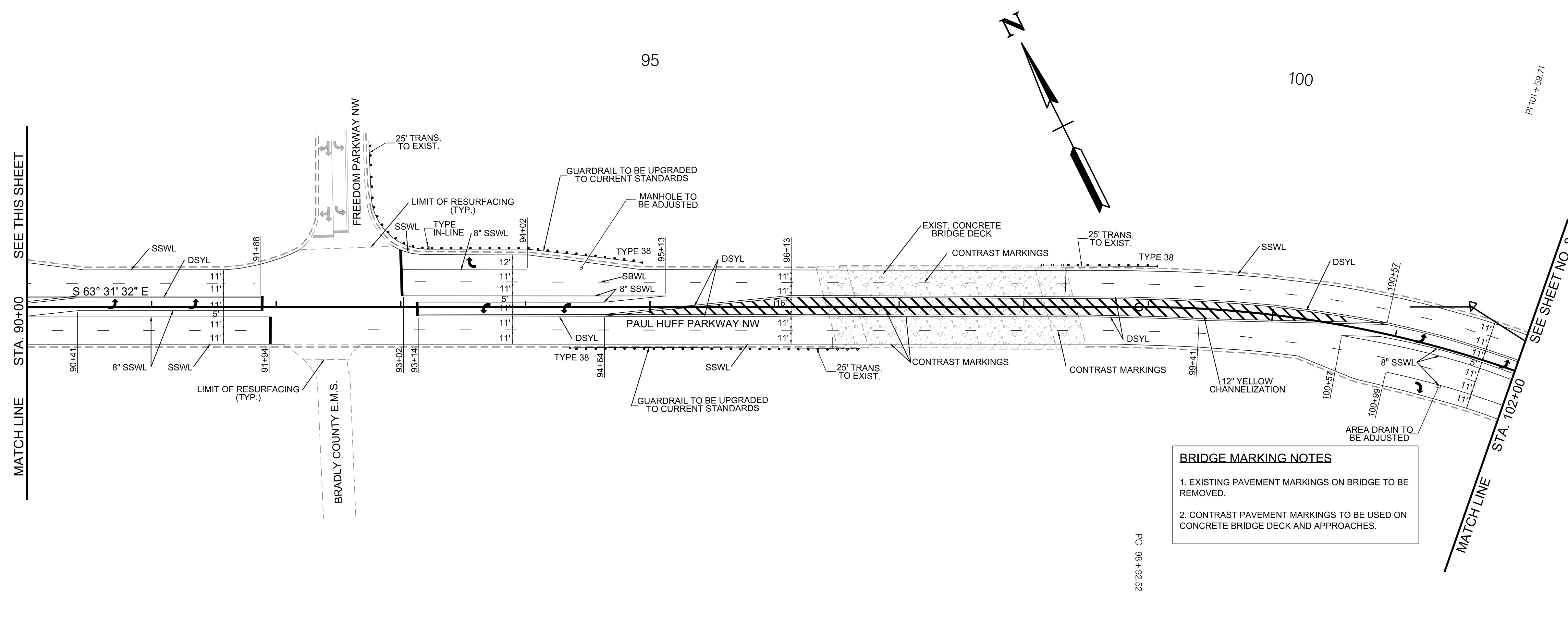


PAVEMENT MARKING LEGEND

SYMBOL	ITEM
---	DOTTED WHITE LINE (2' WITH 4' SPACING)
- - - -	SINGLE BROKEN WHITE LINE
—	SINGLE SOLID WHITE LINE
- - - -	SINGLE BROKEN YELLOW LINE
—	SINGLE SOLID YELLOW LINE
—	DOUBLE SOLID YELLOW LINE
—	24" STOP LINE
----	24" YIELD LINE
→	STRAIGHT ARROW
↪	TURN ARROW
↪	STRAIGHT-TURN ARROW

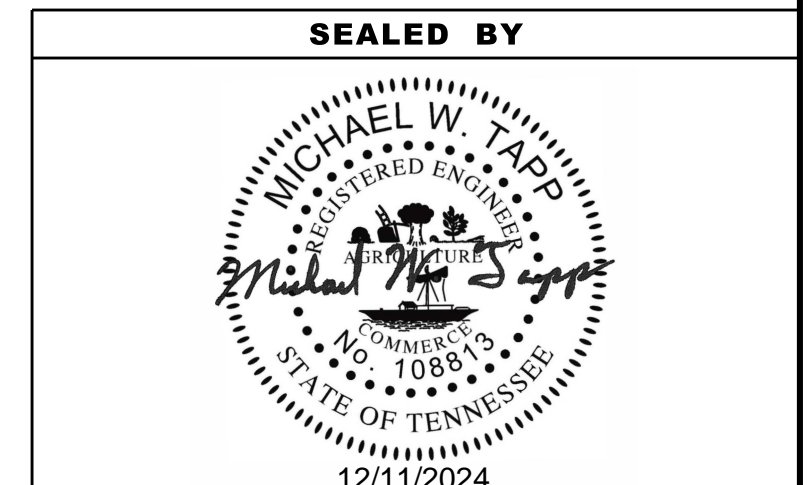
PAVEMENT MARKING NOTES

- ALL LANE MARKINGS SHALL BE 6" SPRAY THERMOPLASTIC, UNLESS OTHERWISE NOTED.
- ALL 8" LANE MARKINGS SHALL BE PLASTIC PAVEMENT MARKINGS.
- ALL PAVEMENT MARKINGS AND SIGNING SHALL BE INSTALLED IN ACCORDANCE WITH TDOT STANDARDS AND THE REQUIREMENTS OF THE CURRENT EDITION OF THE MANUAL ON UNIFORM TRAFFIC CONTROL DEVICES (MUTCD).



BRIDGE MARKING NOTES

- EXISTING PAVEMENT MARKINGS ON BRIDGE TO BE REMOVED.
- CONTRAST PAVEMENT MARKINGS TO BE USED ON CONCRETE BRIDGE DECK AND APPROACHES.



COORDINATES ARE NAD 83(1995), ARE DATUM ADJUSTED BY THE FACTOR OF 1.00003 AND TIED TO THE TGRN. ALL ELEVATIONS ARE REFERENCED TO THE NAVD 1988 WITH GEOID 03.

CITY OF CLEVELAND

PAVEMENT MARKING PLAN

STA. 78+00 TO STA. 102+00
SCALE: 1"= 50'

12/11/2024 09:14:22 P:\2022 Projects\22-200 Cleveland-Paul Huff Pkwy\Transportation\Sheets\06PaulHuff-SHT-007-Pavement04.dgn

TYPE	YEAR	PROJECT NO.	SHEET NO.
CONST.	2024	STP-M-NH-9203(26)	8

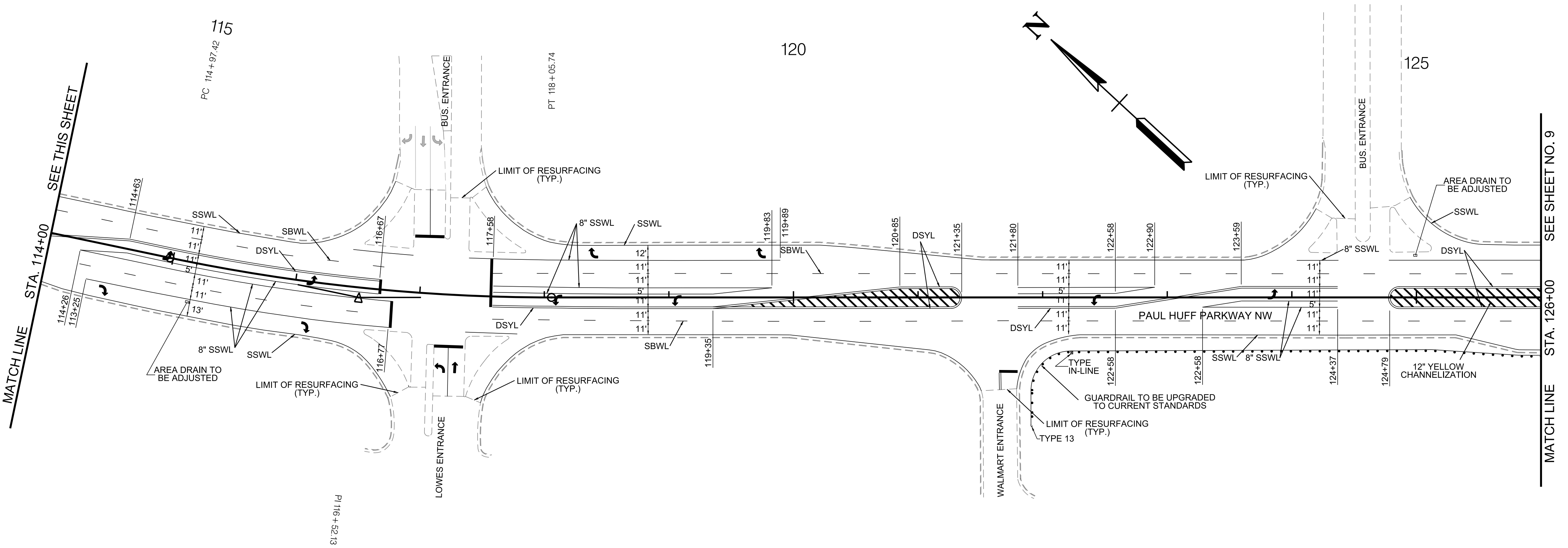
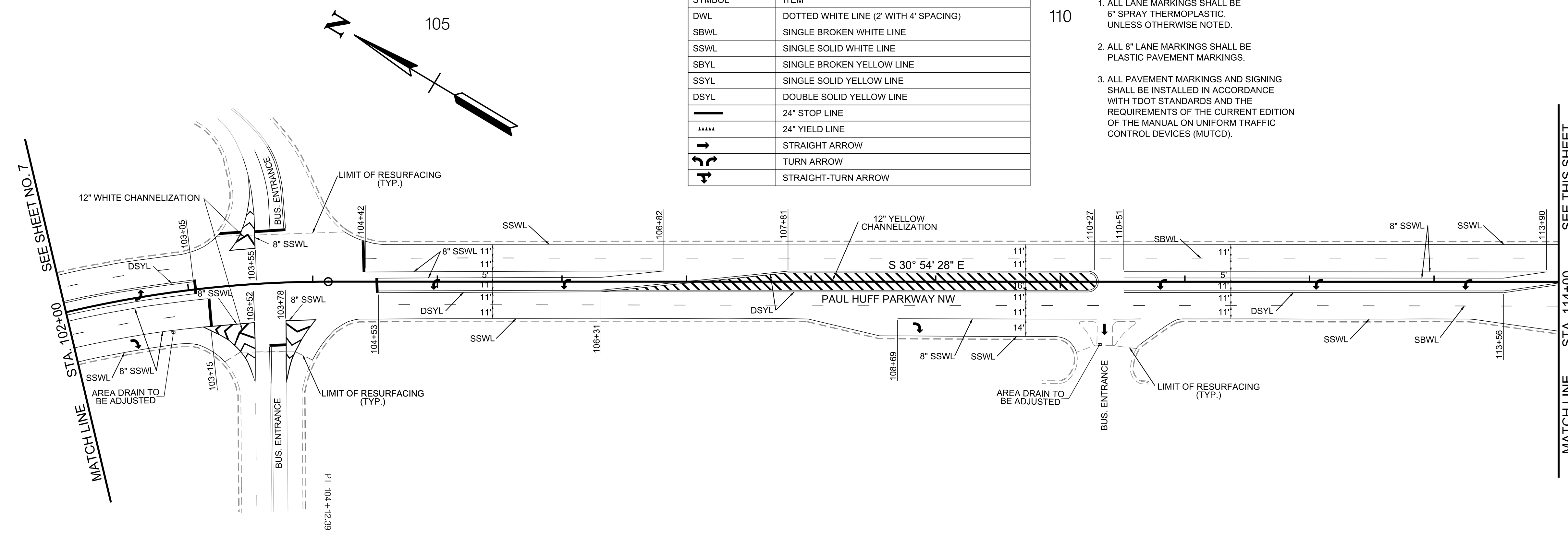
REV. 12-11-24: REVISED GUARDRAIL.

PAVEMENT MARKING LEGEND

SYMBOL	ITEM
---	DOTTED WHITE LINE (2" WITH 4' SPACING)
- - - -	SINGLE BROKEN WHITE LINE
—	SINGLE SOLID WHITE LINE
- - - -	SINGLE BROKEN YELLOW LINE
—	SINGLE SOLID YELLOW LINE
— — — —	DOUBLE SOLID YELLOW LINE
—	24" STOP LINE
----	24" YIELD LINE
→	STRAIGHT ARROW
↘ ↙	TURN ARROW
→ ↘ ↙	STRAIGHT-TURN ARROW

PAVEMENT MARKING NOTES

- ALL LANE MARKINGS SHALL BE 6" SPRAY THERMOPLASTIC, UNLESS OTHERWISE NOTED.
- ALL 8" LANE MARKINGS SHALL BE PLASTIC PAVEMENT MARKINGS.
- ALL PAVEMENT MARKINGS AND SIGNING SHALL BE INSTALLED IN ACCORDANCE WITH TDOT STANDARDS AND THE REQUIREMENTS OF THE CURRENT EDITION OF THE MANUAL ON UNIFORM TRAFFIC CONTROL DEVICES (MUTCD).



SEALED BY

COORDINATES ARE NAD 83(1995), ARE DATUM ADJUSTED BY THE FACTOR OF 1.00003 AND TIED TO THE TGRN. ALL ELEVATIONS ARE REFERENCED TO THE NAVD 1988 WITH GEOID 03.

CITY OF CLEVELAND

PAVEMENT MARKING PLAN

STA. 102+00 TO STA. 126+00.00
SCALE: 1"= 50'

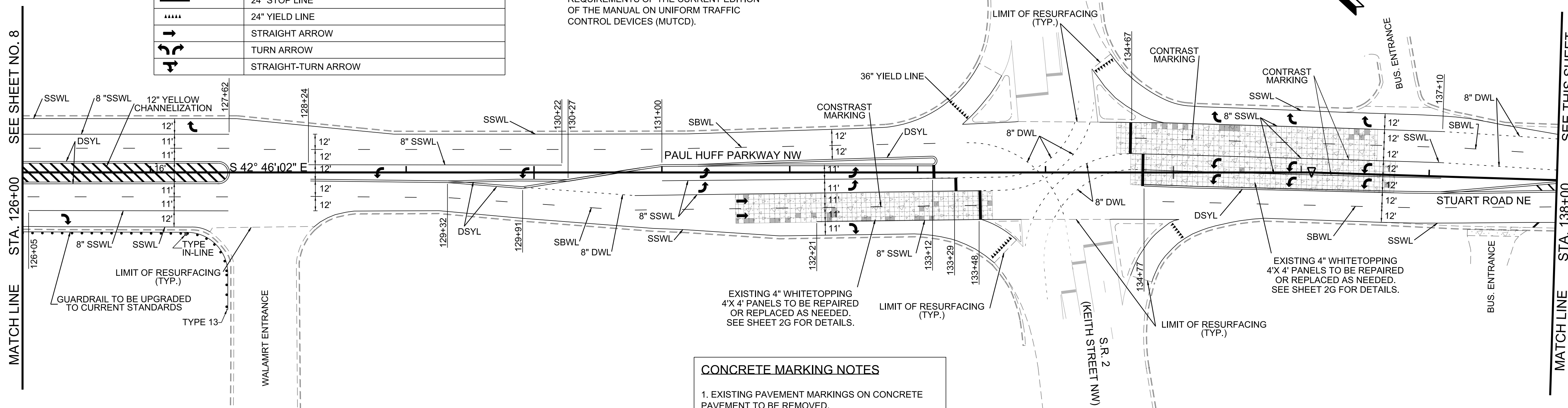
12/11/2024 09:14:22 P:\2022 Projects\22-200 Cleveland-Paul Huff Pkwy\Transportation\Sheets\06PaulHuff-SHT-008-Pavement05.dgn

TYPE	YEAR	PROJECT NO.	SHEET NO.
CONST.	2024	STP-M-NH-9203(26)	9

REV. 12-11-24: REVISED GUARDRAIL.

PAVEMENT MARKING LEGEND	
SYMBOL	ITEM
DWL	DOTTED WHITE LINE (2' WITH 4' SPACING)
SBWL	SINGLE BROKEN WHITE LINE
SSWL	SINGLE SOLID WHITE LINE
SBYL	SINGLE BROKEN YELLOW LINE
SSYL	SINGLE SOLID YELLOW LINE
DSYL	DOUBLE SOLID YELLOW LINE
—	24" STOP LINE
----	24" YIELD LINE
→	STRAIGHT ARROW
↪	TURN ARROW
↪	STRAIGHT-TURN ARROW

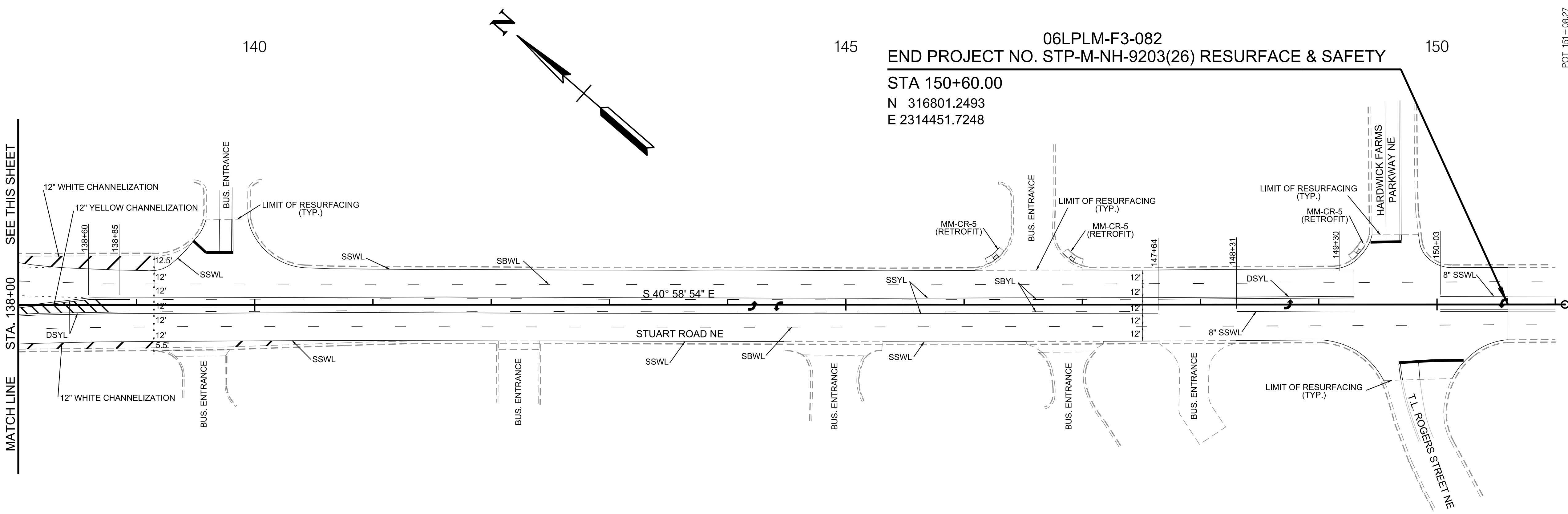
- PAVEMENT MARKING NOTES**
- ALL LANE MARKINGS SHALL BE 6" SPRAY THERMOPLASTIC, UNLESS OTHERWISE NOTED.
 - ALL 8" LANE MARKINGS SHALL BE PLASTIC PAVEMENT MARKINGS.
 - ALL PAVEMENT MARKINGS AND SIGNING SHALL BE INSTALLED IN ACCORDANCE WITH TDOT STANDARDS AND THE REQUIREMENTS OF THE CURRENT EDITION OF THE MANUAL ON UNIFORM TRAFFIC CONTROL DEVICES (MUTCD).



CONCRETE MARKING NOTES

- EXISTING PAVEMENT MARKINGS ON CONCRETE PAVEMENT TO BE REMOVED.
- CONTRAST PAVEMENT MARKINGS TO BE USED ON CONCRETE WHITETOPPING.

12/11/2024 09:14:22 P:\2022 Projects\22-200 Cleveland-Paul Huff Pkwy\Transportation\Sheets\06PaulHuff-SHT-009-Pavement06.dgn



06LPLM-F3-082
 END PROJECT NO. STP-M-NH-9203(26) RESURFACE & SAFETY
 STA 150+60.00
 N 316801.2493
 E 2314451.7248



COORDINATES ARE NAD 83(1995), ARE DATUM ADJUSTED BY THE FACTOR OF 1.00003 AND TIED TO THE TGRN. ALL ELEVATIONS ARE REFERENCED TO THE NAVD 1988 WITH GEOID 03.

CITY OF CLEVELAND

PAVEMENT MARKING PLAN

STA.126+00 TO STA.150+60.00
 SCALE: 1"= 50'

POT 151+08.27