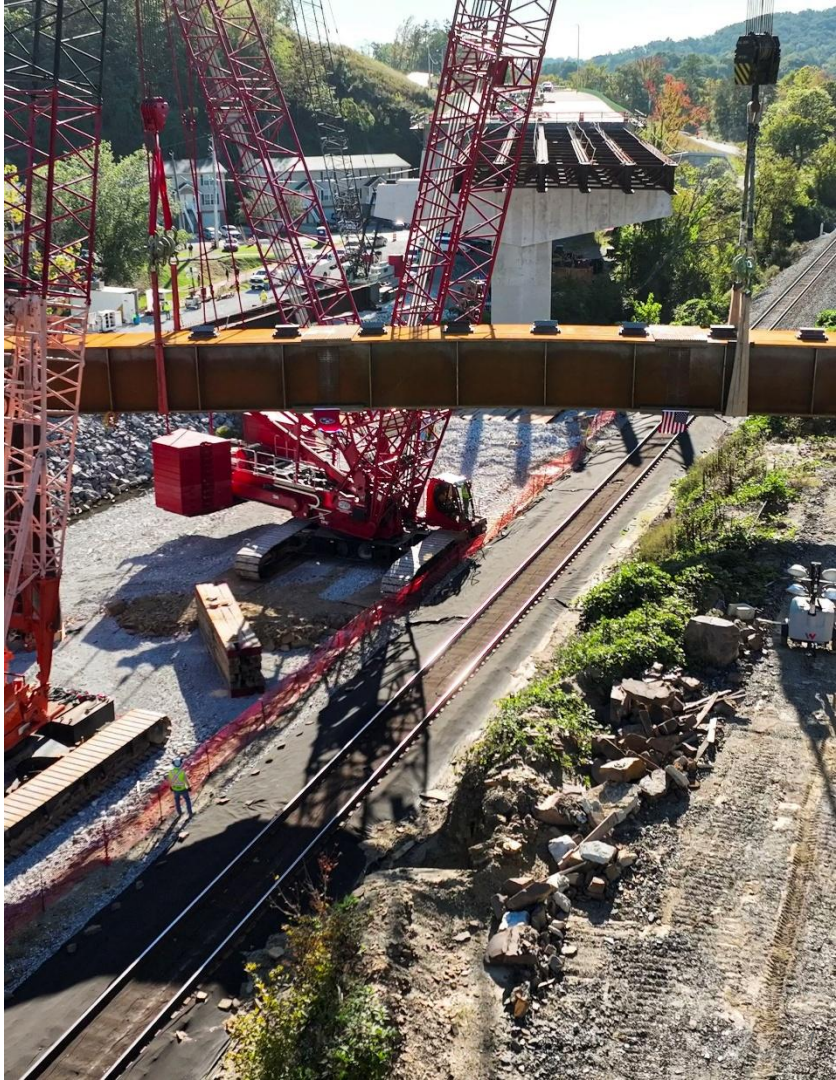


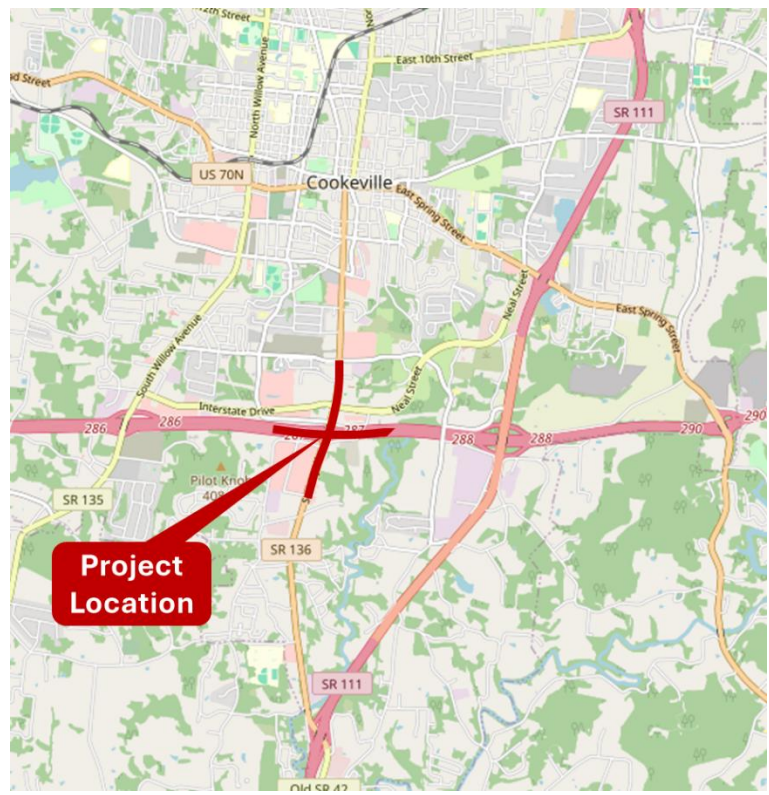


TDOT
Department of
Transportation

Region 2



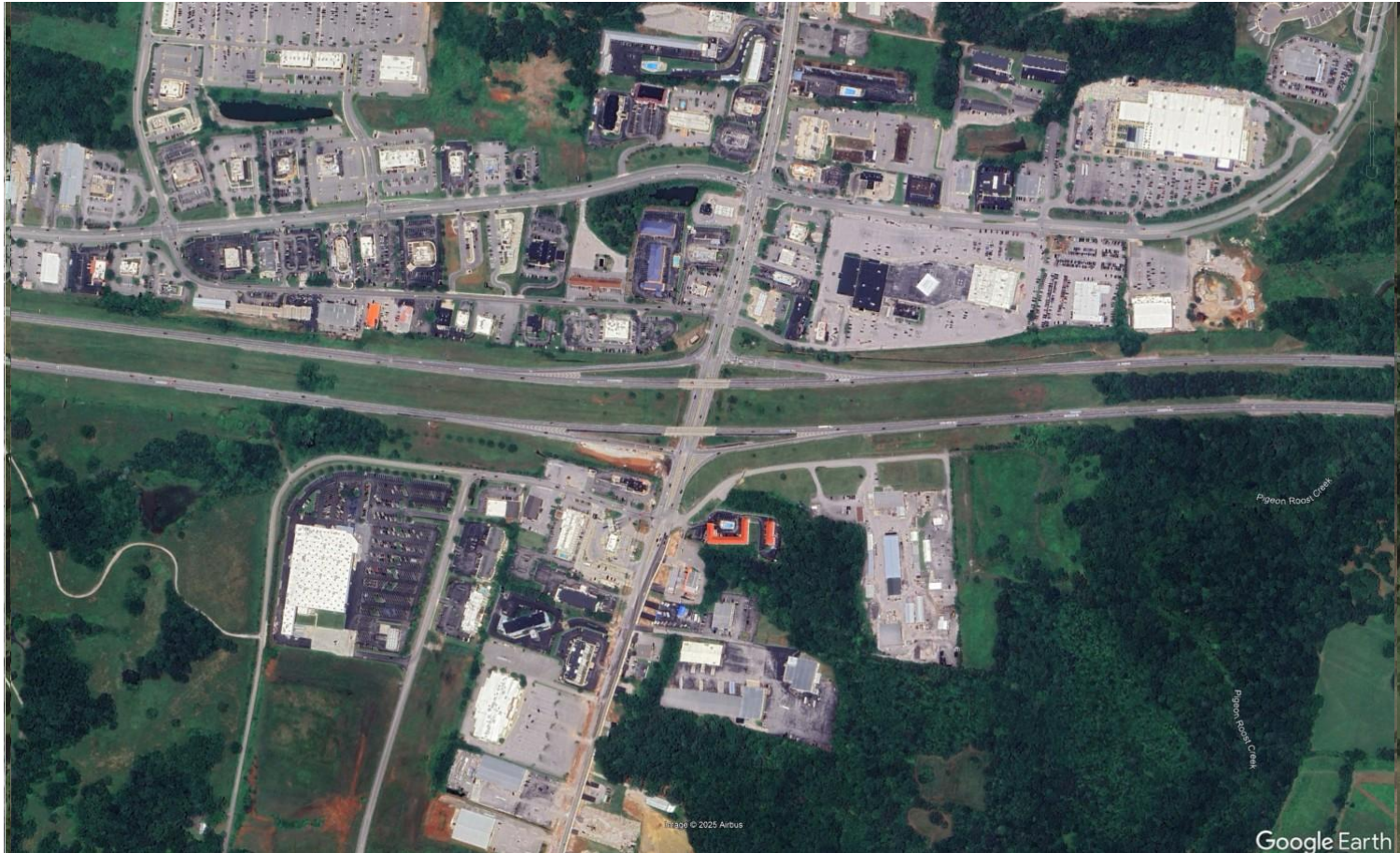
I-40 at SR-136, Exit 287, Putnam County



I-40 at SR-136, Exit 287, Putnam County

- **Known Issues**
 - **Rapid urbanization of Cookeville.**
 - **Increased traffic volumes and conflicting turning movements are causing significant traffic issues during peak times.**
 - **New commercial development on Interstate Drive has increased peak time traffic.**

I-40 at SR-136, Exit 287, Putnam County



I-40 at SR-136, Exit 287, Putnam County



Geometric Data



I-40 at SR-136, Exit 287, Putnam County

- **Technical Disciplines**
 - **Field Work**
 - Survey, Environmental, Geotechnical, Utilities
 - **Traffic/Safety Analysis & Concepts**
 - Counts and Forecasts will be provided
 - **Design**
 - Roadway, Structures, Traffic
 - **ROW**
 - Appraisals & Acquisition
 - **Permitting & Coordination**
 - **Project Management**

I-40 at SR-136, Exit 287, Putnam County

- **Current Schedule**
 - Preliminary Engineering – FY 26
 - Right-of-Way – FY 29
 - Construction – FY 32
- **Method of Payment**
 - Cost Plus Fixed Fee
 - Federal Funds

I-40 at SR-136, Exit 287, Putnam County

- **Project Website**

- Interstate 40 Interchange at State Route 136
- South Jefferson Avenue (State Route 136)

- **Contact Information**

- **Bryan A. Williams - Professional Services,**
- **Email: TDOT.PSAdvertisements@tn.gov**
- **Office: 615-253-3997**

I-40 at SR-136, Exit 287, Putnam County

• Advertisement Schedule

	Deadline
Questions	April 2, 2026, 4:00 pm (CST)
Letter of Interest	April 7, 2026, 4:00 pm (CST)
Phase I Selection Results	April 24, 2026 (Anticipated)
Request for Proposals	Provided as Phase I Selection
Phase II Interviews	Week of May 4, 2026 (<i>Chattanooga</i>)

• Contact Information

- **Bryan A. Williams – Professional Services,**
- **Email: TDOT.PSAdvertisements@tn.gov**
- **Office: 615-253-3997**

I-40 at SR-136, Exit 287, Putnam County

- **Phase I**
 - Firm Overview
 - Project Fit
 - Qualification Type
- **Phase II**
 - Team capability & work experience
 - Technical approach
 - Amount of work under contract (*on file w/TDOT*)
 - Oral Interview (*details in ad*)



Questions

