

LAMTPO Wayfinding Sign Project

Background

- Morristown Planning Staff saw a need for a wayfinding sign project back in 2000
- Started as a Morristown, TN project (requested \$250,000 (\$200,000 STP, \$50,000 local) in October 2012
- LAMTPO TAC and Executive Board approved this to be a regional type project, in December 2012 (total funds \$450,000 (\$400,000 STP, \$50,000 local match)

Objectives

- To help tourists get to desired locations easier
- To have conformity in signs (same color for same destination)
- Be more informative of what is here

Destinations

- Historical
 - Longstreet Museum
 - Bethesda Church and Cemetery

Public Places

Municipal bldgs

County Courthouses

Parks

Schools

Other

Hospitals

Entertainment (golf, shopping, etc)

Process

- Staff met with each entity to discuss what type of signs, and where the signs should be located
- Added online map
<http://www.arcgis.com/home/webmap/viewer.html?webmap=69e8edfifce343abacfia2987c6d6da1>
- Advertisements was sent to 5 local newspapers to hire a consultant for the work to be done (start to finish)
- A Wayfinding Selection Committee (made up of the local governing agencies of LAMTPO to select the consultant
9 different consulting firms applied, Kimley-Horn Associates, with DAWA Inc, received the contract

Issues

- Too Many signs, not enough funds
 - Estimated costs for all signs approximately \$810,000
- How many signs for each entity
 - Broken down by percentage of signs per local entity
 - Also depends on how much local match the local agency is willing to pay

Number of Signs per entity

Location	type of sign	# signs
White Pine	Gateway	4
	Directional	10
Jefferson City	Gateway	4
	Directional	17
Morristown	Gateway	6
	Directional	52
Hamblen County	Gateway	0
	directional	4
LAMTPO		97

Gateway Sign



G1 - High Profile
Gateway

Directional Sign



D1 - Directional
(60" wide copy area, 6" cap-heights)

D2 - Directional
(42" wide copy area, 4" cap-heights)





05/22/2017



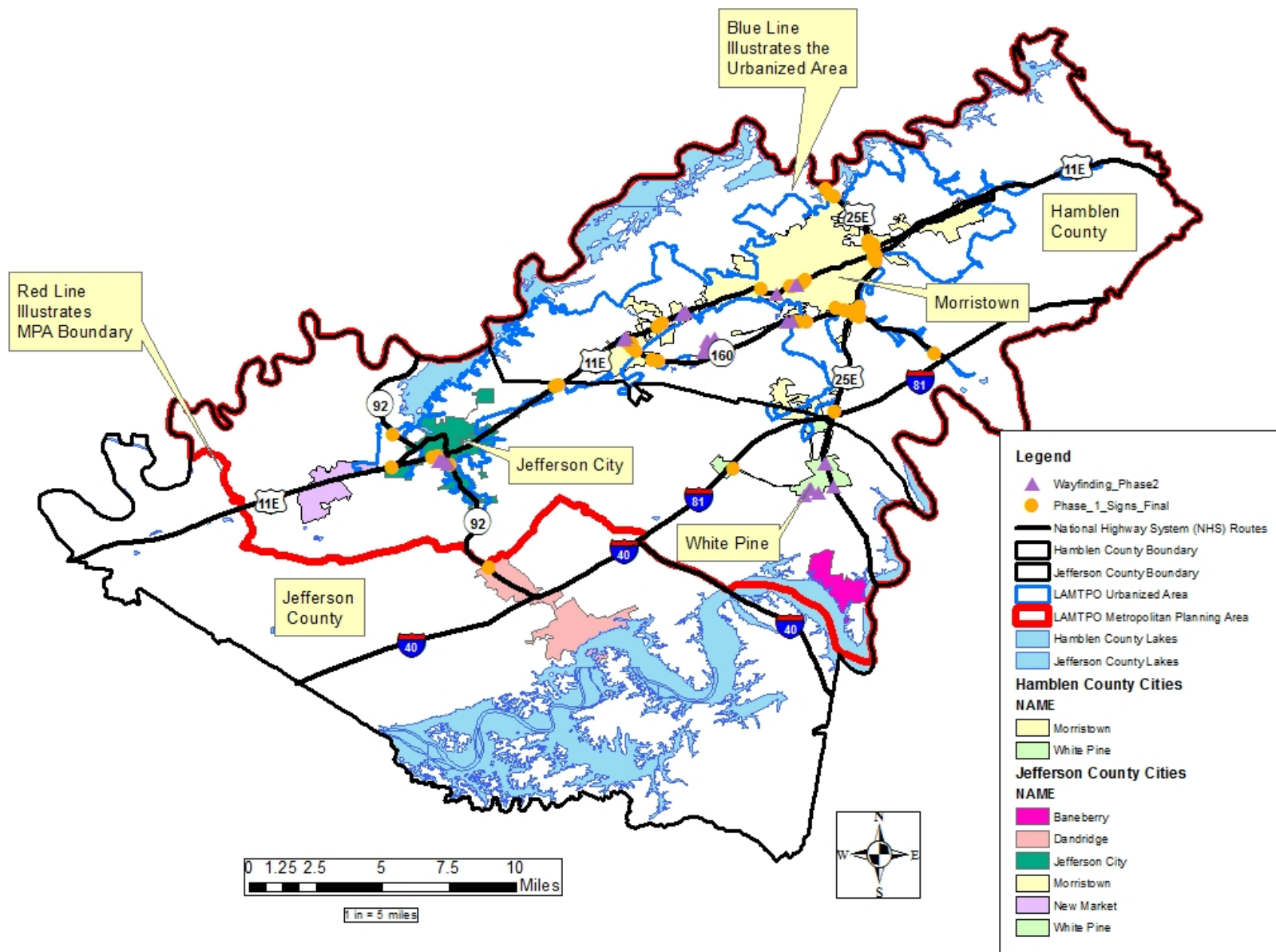
05/22/2017







LAMTPO Wayfinding Sign Project



Questions / Comments

