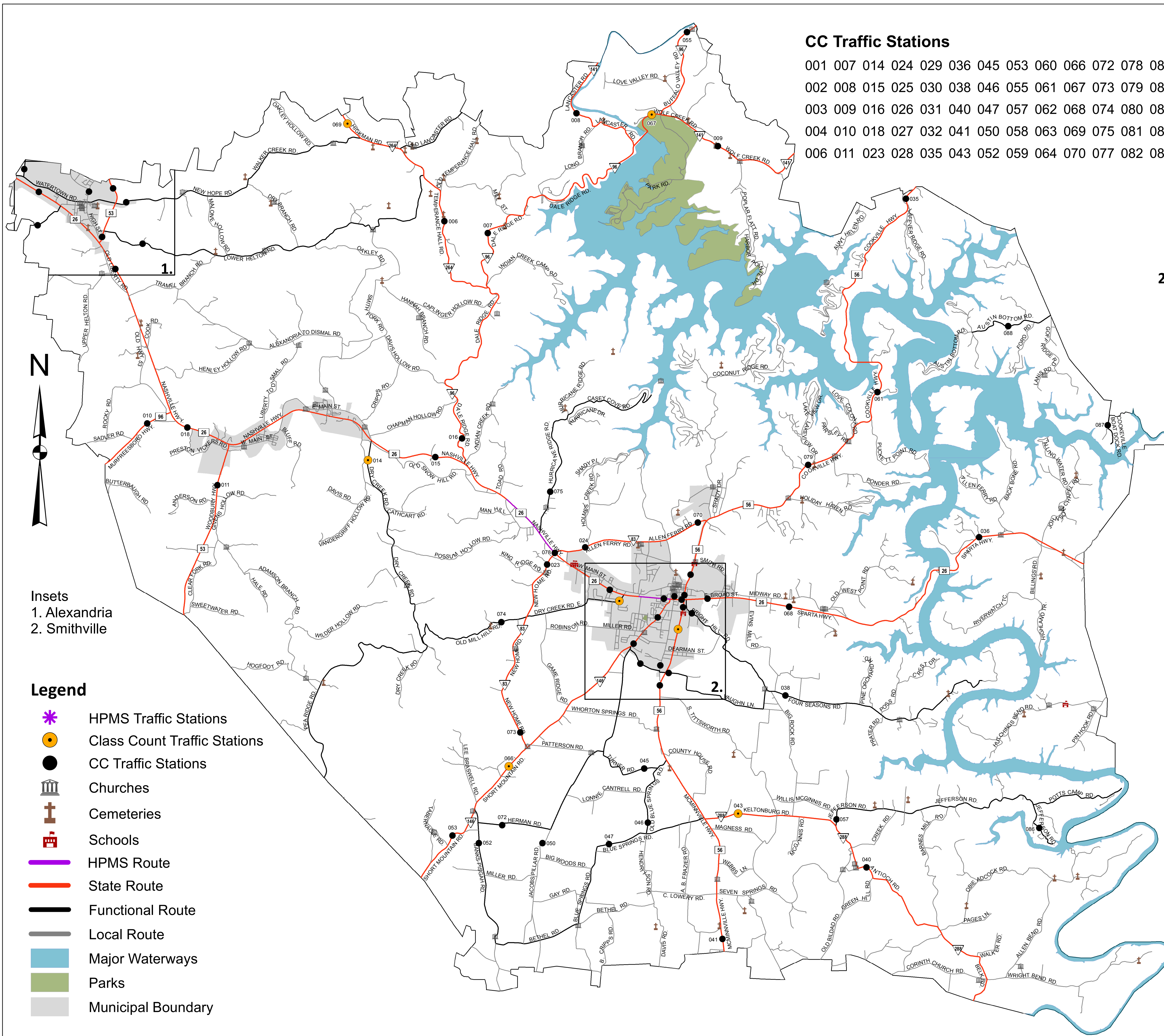


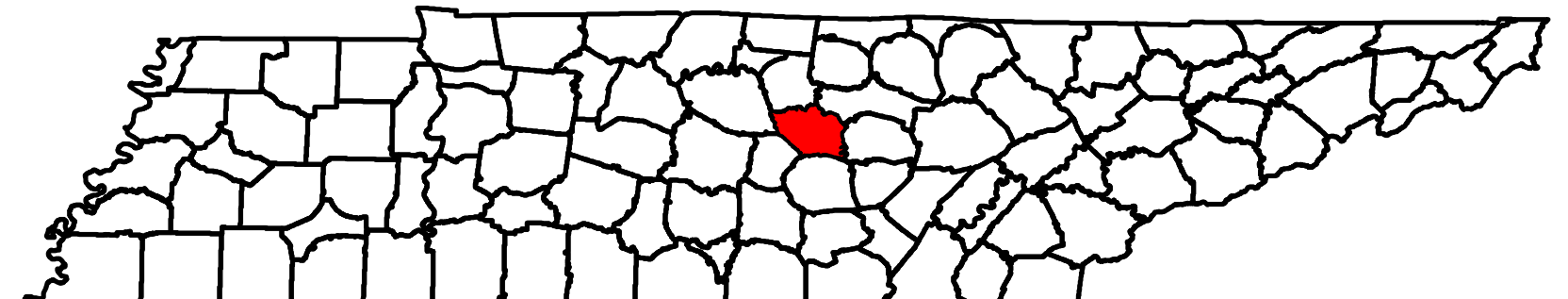
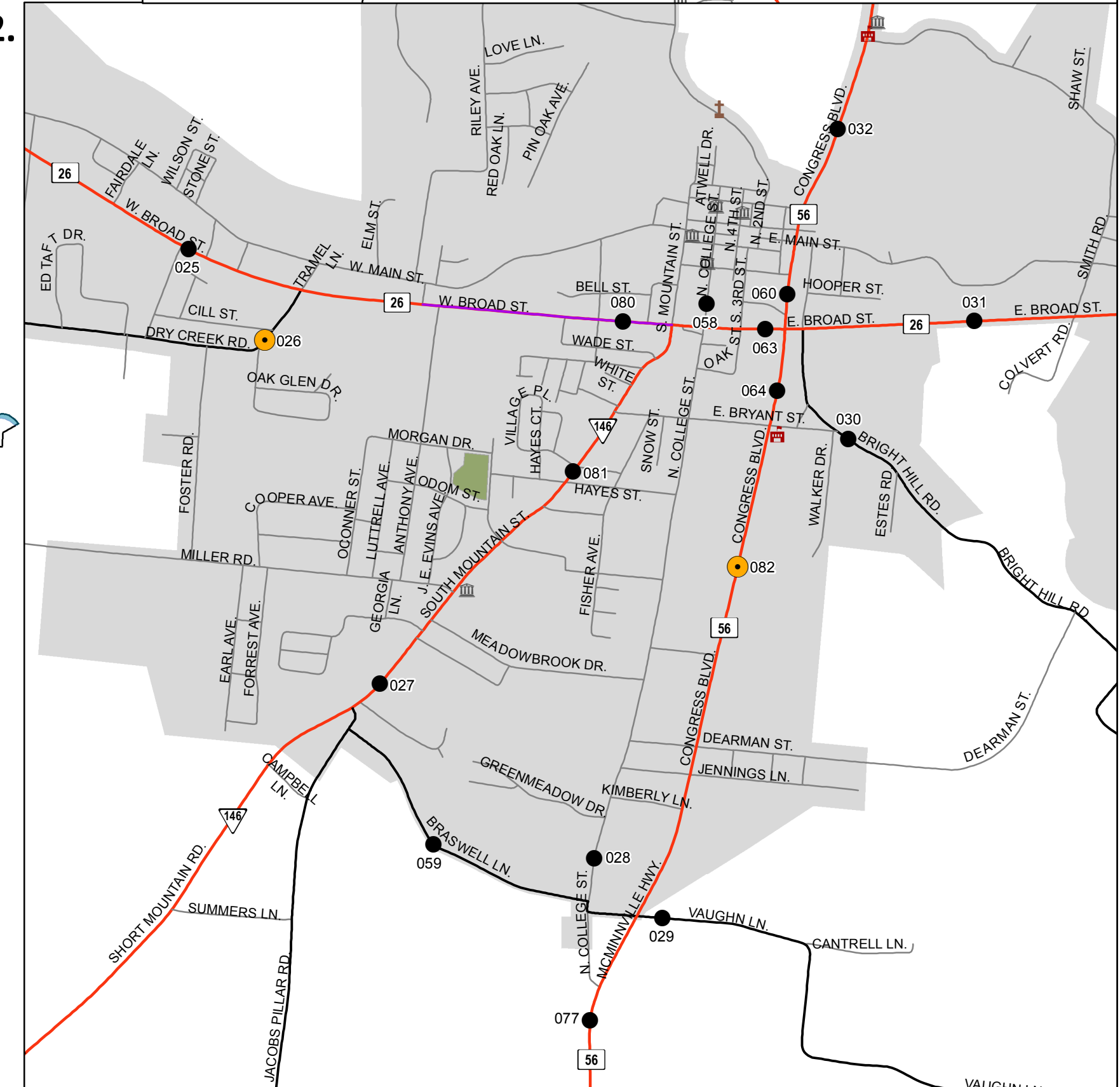
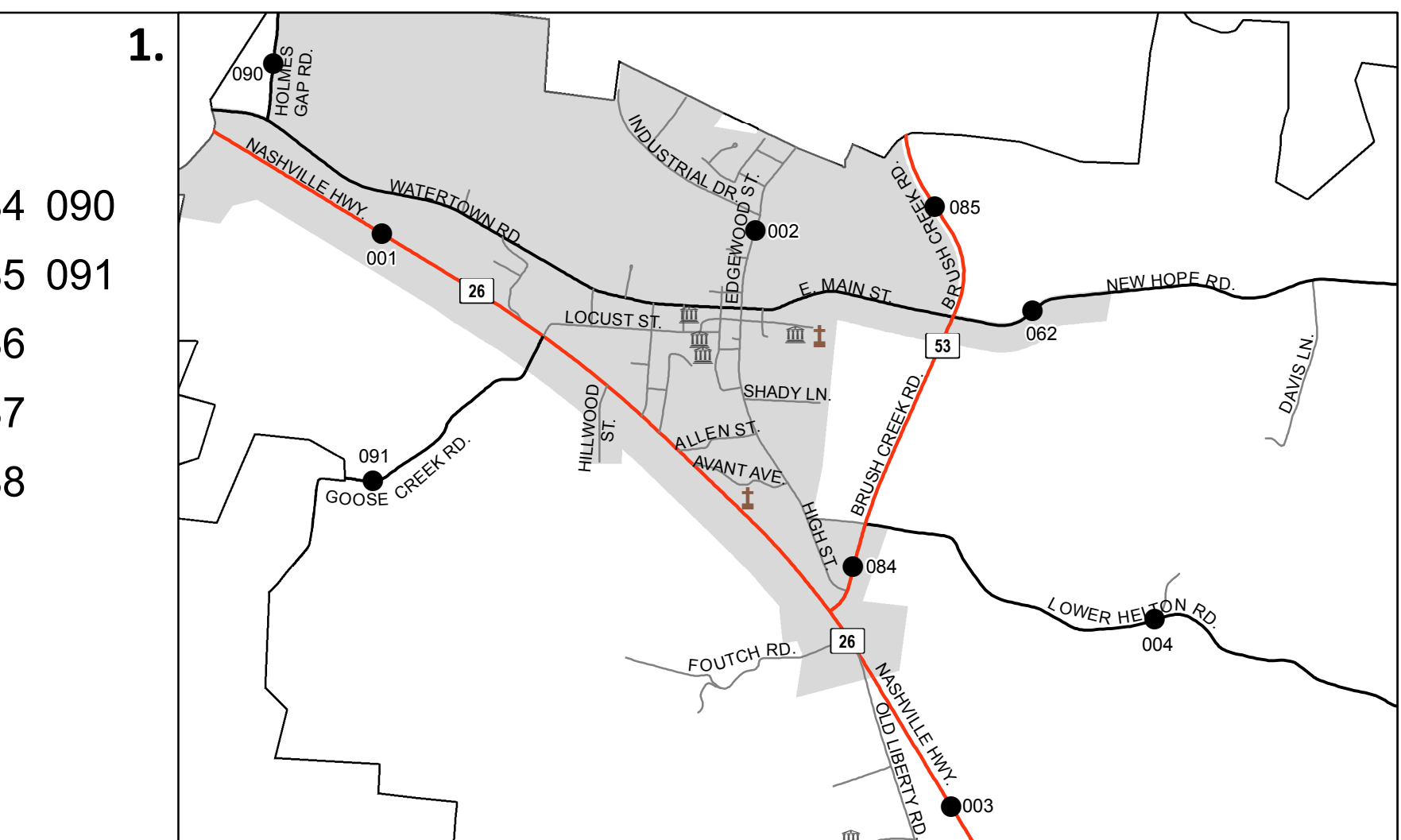
CC Traffic Stations

001 007 014 024 029 036 045 053 060 066 072 078 084 090
 002 008 015 025 030 038 046 055 061 067 073 079 085 091
 003 009 016 026 031 040 047 057 062 068 074 080 086
 004 010 018 027 032 041 050 058 063 069 075 081 087
 006 011 023 028 035 043 052 059 064 070 077 082 088

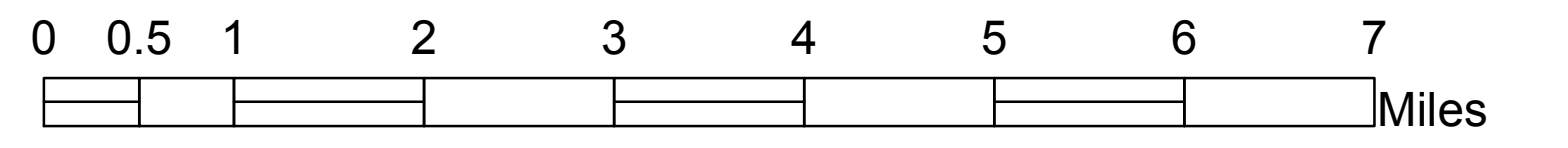


Insets
 1. Alexandria
 2. Smithville

- Legend**
- HPMS Traffic Stations
 - Class Count Traffic Stations
 - CC Traffic Stations
 - Churches
 - Cemeteries
 - Schools
 - HPMS Route
 - State Route
 - Functional Route
 - Local Route
 - Major Waterways
 - Parks
 - Municipal Boundary



**2017 Traffic Map
 DeKalb County
 Tennessee**
 Prepared by the
 Tennessee Department of Transportation
 Long Range Planning Division
 Office of Data Visualization



DeKalb County 2016 AADT

Station #	AADT
001	3,620
002	918
003	5,049
004	450
006	520
007	342
008	163
009	410
010	3,160
011	1,140
014	320
015	6,369
016	887
018	6,756
023	1,724
024	2,192
025	10,998
026	951
027	3,769
028	1,030
029	1,132
030	1,264
031	7,532
032	6,521
035	4,129
036	3,105
038	979
040	654
041	4,370
043	1,422
045	311
046	403
047	475
050	326
052	507
053	1,508
055	770
057	470
058	1,003
059	760
060	8,273
061	3,690
062	685
063	13,284
064	11,727
066	2,394
067	839
068	4,348
069	560
070	2,461
072	110
073	912
074	476
075	745
077	7,059
078	9,857
079	3,848
080	12,340
081	5,186
082	7,718

Station #	AADT
084	3,097
085	2,279
086	194
087	337
088	422
090	100
091	303