

McMinn County





- X Ramp Counter
- Control Point
- Traffic Station

Sources: Esri, DeLorme, HERE, USGS, Intermap, increment P Corp., NRCAN, Esri Japan, METI, Esri China (Hong Kong), Esri (Thailand), TomTom



Prepared by
Tennessee Dept. of Transportation
Long Range Planning Division

Date: 7/15/2014

McMinn County Interstate 75 Exit No: 36



Traffic Counter Location Ramp Interchange Diagram

54100750010036





Sources: Esri, DeLorme, HERE, USGS, Intermap, increment P Corp., NRCAN, Esri Japan, METI, Esri China (Hong Kong), Esri (Thailand), TomTom



Prepared by
Tennessee Dept. of Transportation
Long Range Planning Division

Date: 7/8/2014

McMinn County

Interstate 75

Exit No: 42



Traffic Counter Location Ramp Interchange Diagram

54100750010042





Sources: Esri, DeLorme, HERE, USGS, Intermap, increment P Corp., NRCAN, Esri Japan, METI, Esri China (Hong Kong), Esri (Thailand), TomTom

- Ramp Counter
- Control Point
- Traffic Station



Prepared by
Tennessee Dept. of Transportation
Long Range Planning Division

Date: 7/8/2014

McMinn County

Interstate 75

Exit No: 49



Traffic Counter Location Ramp Interchange Diagram

54100750010049





Sources: Esri, DeLorme, HERE, USGS, Intermap, increment P Corp., NRCAN, Esri Japan, METI, Esri China (Hong Kong), Esri (Thailand), TomTom



Prepared by
Tennessee Dept. of Transportation
Long Range Planning Division

Date: 7/8/2014

McMinn County

Interstate 75

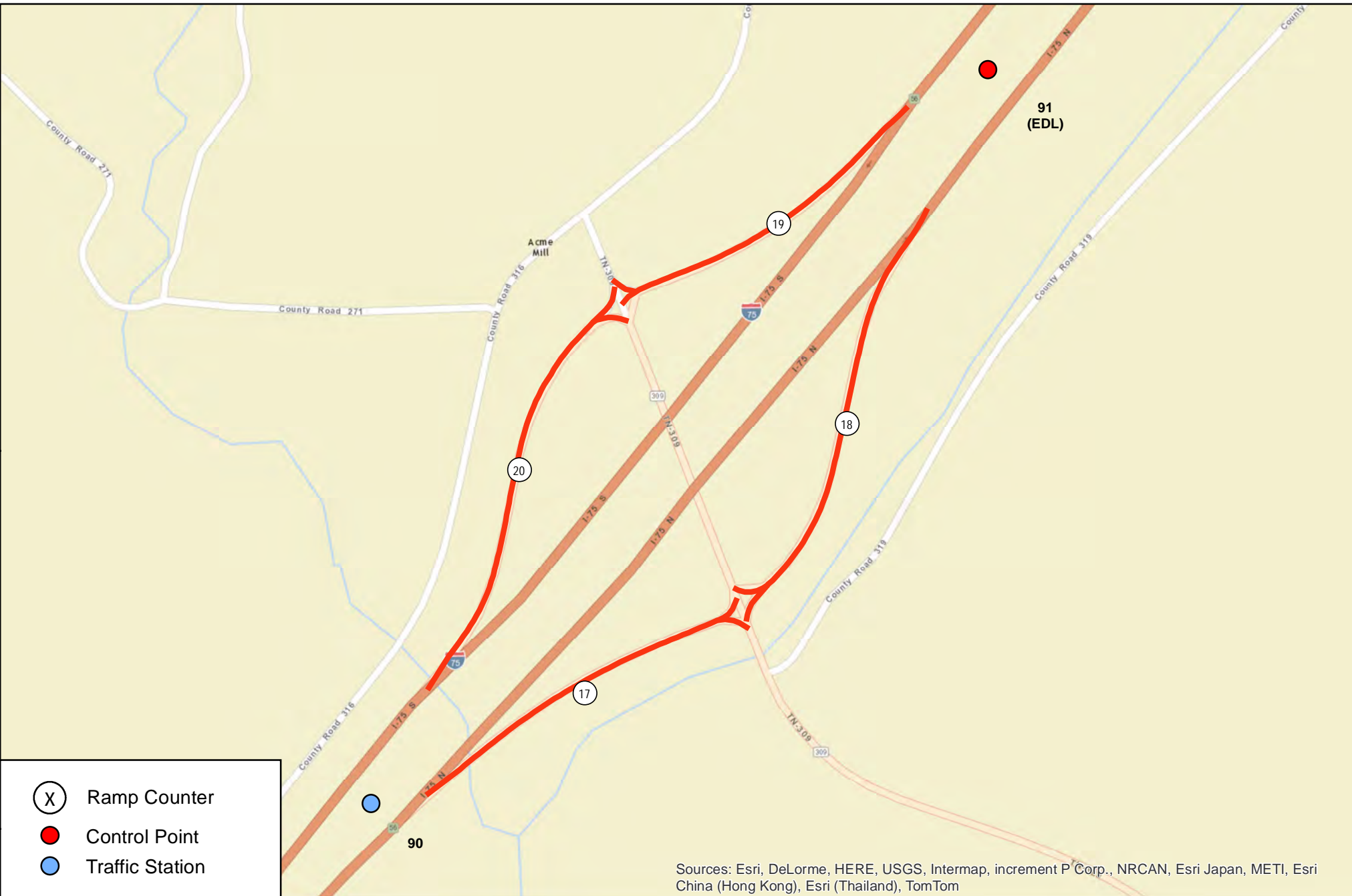
Exit No: 52



Traffic Counter Location Ramp Interchange Diagram

54100750010052





- X Ramp Counter
- Control Point
- Traffic Station

Sources: Esri, DeLorme, HERE, USGS, Intermap, increment P Corp., NRCAN, Esri Japan, METI, Esri China (Hong Kong), Esri (Thailand), TomTom



Prepared by
Tennessee Dept. of Transportation
Long Range Planning Division

Date: 7/8/2014

McMinn County

Interstate 75

Exit No: 56



Traffic Counter Location

Ramp Interchange Diagram

54100750010056



McMinn Ramp Counter Stations

Counter #	AADT
1	1,440
2	690
3	620
4	1,490
5	1,370
6	460
7	400
8	1,300
9	2,730
10	3,280
11	3,230
12	2,670
13	1,890
14	2,000
15	2,170
16	1,910

Counter #	AADT
17	2,140
18	1,890
19	1,580
20	1,820