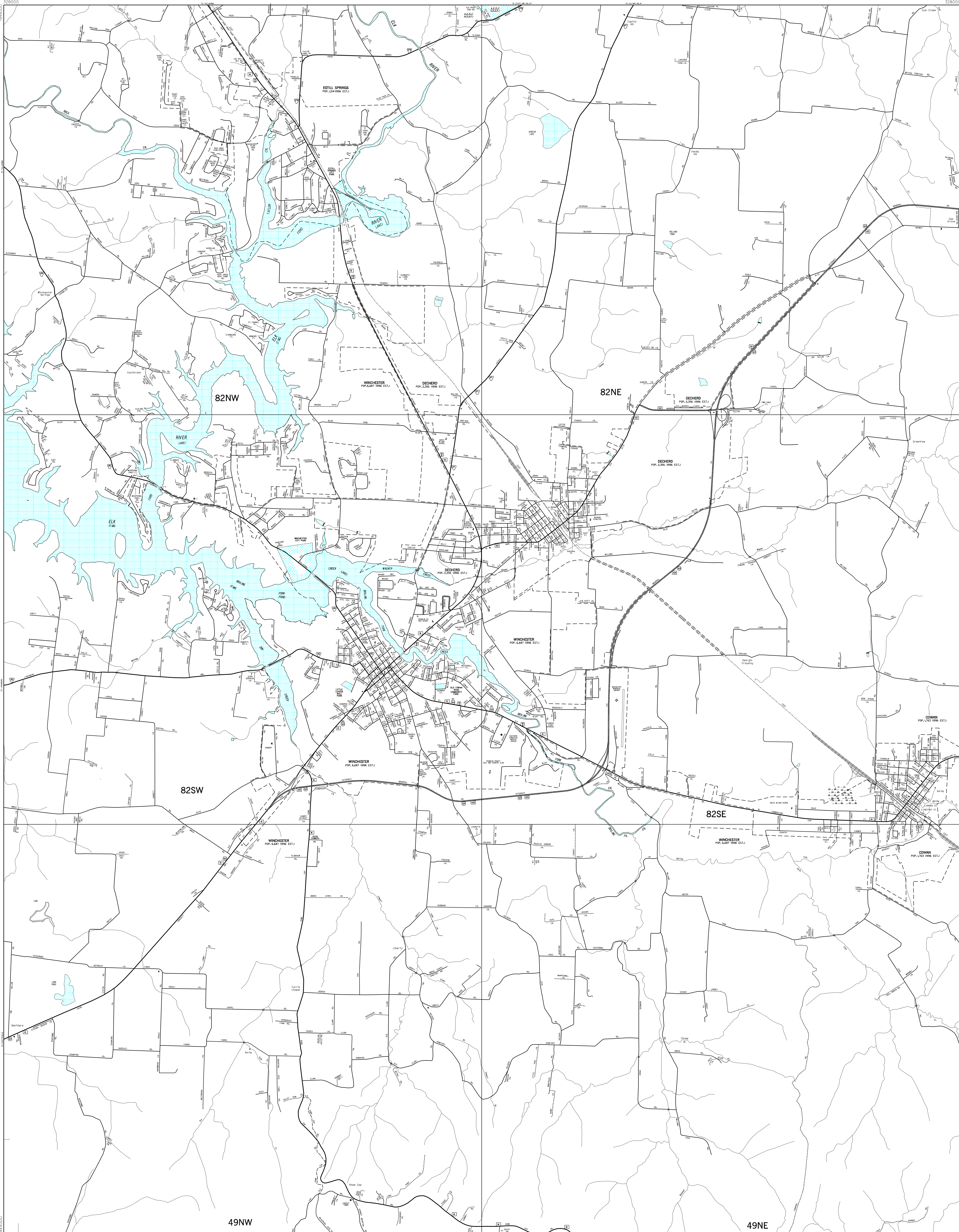


MAP RECORD	
FIELD DATA OBTAINED IN 1994	
FIELD EXAMINATION MADE IN 1997	
REVISIONS	
FEATURE	DATE



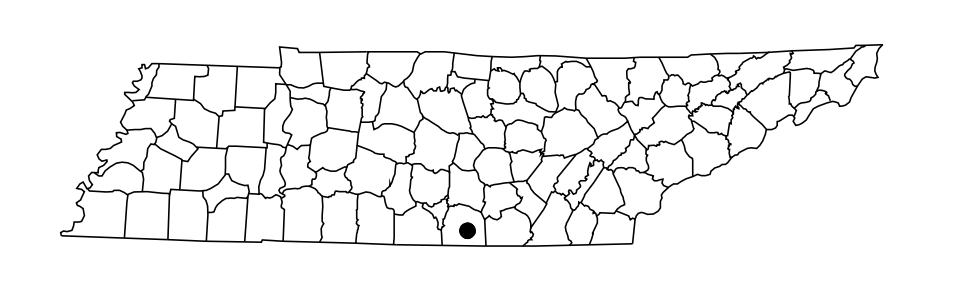
LEGEND

- SCHOOL
- HOSPITAL
- POST OFFICE
- COURTHOUSE
- CITY HALL OR COMMUNITY CENTER
- MONUMENT
- AIRPORT - COMPLETE FACILITIES
- AIRPORT - LIMITED FACILITIES
- LANDING AREA OR STRIP
- OBSERVATION OR LOOKOUT TOWER
- ARMORY
- HIGHWAY GARAGE (S-STATE, C-COUNTY)
- POINTS OF INTEREST
- INTERSTATE HIGHWAY
- U.S. NUMBERED HIGHWAY
- STATE HIGHWAY
- STATE HIGHWAY
- LAKE WITH DAM
- RESERVOIR, POND OR LAKE
- LEVEE OR DYKE
- NARROW STREAM
- WIDE STREAM
- DAM WITH LOCK
- HEAD OF NAVIGATION
- NAVIGABLE STREAM
- GRADE CROSSING
- UNDERPASS-ROAD BELOW
- OVERHEAD-ROAD ABOVE
- RAILROAD TUNNEL
- GRADE SEPARATION
- FORD
- LOW WATER BRIDGE
- FREE FERRY OR TOLL FERRY
- HIGHWAY BRIDGE-OVER 20 FEET
- HIGHWAY BRIDGE-LONG RIVER CROSSING
- PRIMITIVE OR UNIMPROVED ROAD
- GRADED AND DRAINED, SOIL, GRAVEL OR STONE SURFACED ROAD
- PAVED ROAD
- GRADED AND DRAINED, SOIL, GRAVEL OR STONE SURFACED HIGHWAY
- PAVED HIGHWAY
- DIVIDED ROADWAY
- DISTANCE IN MILES BETWEEN DESIGNATED POINTS
- FULL CONTROL OF ACCESS
- NATIONAL PARK SERVICE HIGHWAY
- COUNTY LINE
- STATE LINE
- INCORPORATED CITY BOUNDARY
- RESERVATION BOUNDARY
- PAVED OR GRAVEL PUBLIC ROAD MAINTENANCE NOT CITY OR COUNTY RESPONSIBILITY

INDEX TO ADJOINING STATEWIDE PLANIMETRIC MAPS

82NW	82NE
82SW	82SE
49NW	49NE

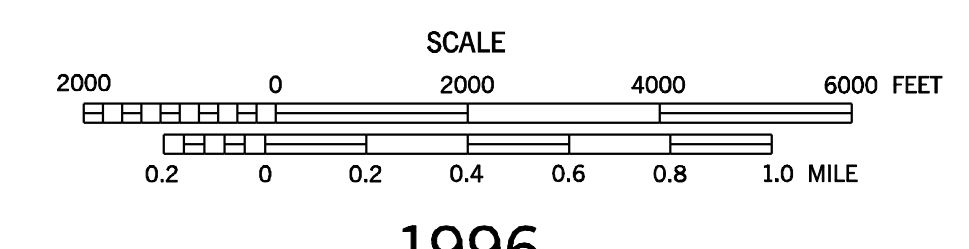
INDIVIDUAL MAP SHEETS AVAILABLE AT THE SCALE OF 1 INCH EQUALS 1,000 FEET



STATEWIDE PLANIMETRIC MAP

COWAN, DECHERD, ESTILL SPGS. & WINCHESTER
FRANKLIN COUNTY
TENNESSEE

PREPARED BY THE
TENNESSEE DEPARTMENT OF TRANSPORTATION
LONG RANGE PLANNING DIVISION
IN COOPERATION WITH THE
U.S. DEPARTMENT OF TRANSPORTATION
FEDERAL HIGHWAY ADMINISTRATION



1996

AUTHORIZATION NO. 401901962650