

# Pavement Management 2019 Data



Regions 1 & 2:

Interstates and State Routes on the NHS

Regions 3 & 4:

Interstates and All State Routes

# Contents

- Explanation of Terms ..... 1
- 1. Statewide Pavement Conditions..... 3
  - 1.1 Interstates..... 3
  - 1.2 State Routes..... 5
- 2. Region 1 Pavement Conditions (*Average of One Mile Segments*)..... 6
  - 2.1 Region 1 Interstates..... 8
  - 2.2 Region 1 State Routes..... 10
  - 2.3 Region 1 State Routes, 2018..... 11
- 3. Region 2 Pavement Conditions (*Average of One Mile Segments*)..... 12
  - 3.1 Region 2 Interstates..... 13
  - 3.2 Region 2 State Routes..... 15
  - 3.3 Region 2 State Routes, 2018..... 16
- 4. Region 3 Pavement Conditions (*Average of One Mile Segments*)..... 17
  - 4.1 Region 3 Interstates..... 18
  - 4.2 Region 3 State Routes..... 20
- 5. Region 4 Pavement Conditions (*Average of One Mile Segments*)..... 22
  - 5.1 Region 4 Interstates..... 23
  - 5.2 Region 4 State Routes..... 25
- Appendix I: List of segments in poor condition (1-mile segment) ..... 27
- Appendix II: List of segments in poor condition (Project segment)..... 36

## Explanation of Terms

### IRI – International Roughness Index

- Measurement of the number of vertical deviations over a section of road.
- Measured in inches/mile
- Perfect is a “0”

### HC IRI – Half-Car IRI

- Half-Car IRI is used by TDOT’s profilers for construction acceptance testing. The standard method that is collected by our consultants is Quarter-Car IRI. Half-Car IRI values tend to be slightly better than Quarter-Car IRI values obtained from the same location.

### PSI – Pavement Smoothness Index

- Measure of the ROUGHNESS of the road on a scale of 0 – 5.
- Perfect is a “5”
- Roughness is defined as: “The deviations of a pavement surface from a true planar surface with characteristic dimensions that affect vehicle dynamics, ride quality, dynamic loads, and drainage; for example, longitudinal profile, transverse profile, and cross slope.”
- Relates to IRI through:  $PSI = 5 * e^{(-0.0055*IRI)}$

### PDI – Pavement Distress Index

- A measurement of the roadway DISTRESS on a scale from 0 – 5.
- Perfect is a “5”
- Distresses that are evaluated include the following: Fatigue, Rutting, Longitudinal Cracks in the Wheel Path, Patching, Block Cracking, Raveling, Transverse Cracks, & Longitudinal Cracks (Non-Wheel Path).
- Each individual distress mentioned above receives a DEDUCT VALUE based on the severity & number of distresses on a given stretch of road surface.
- All of the D.V.s are given a weight and subtracted from 5.

## PQI – Pavement Quality Index

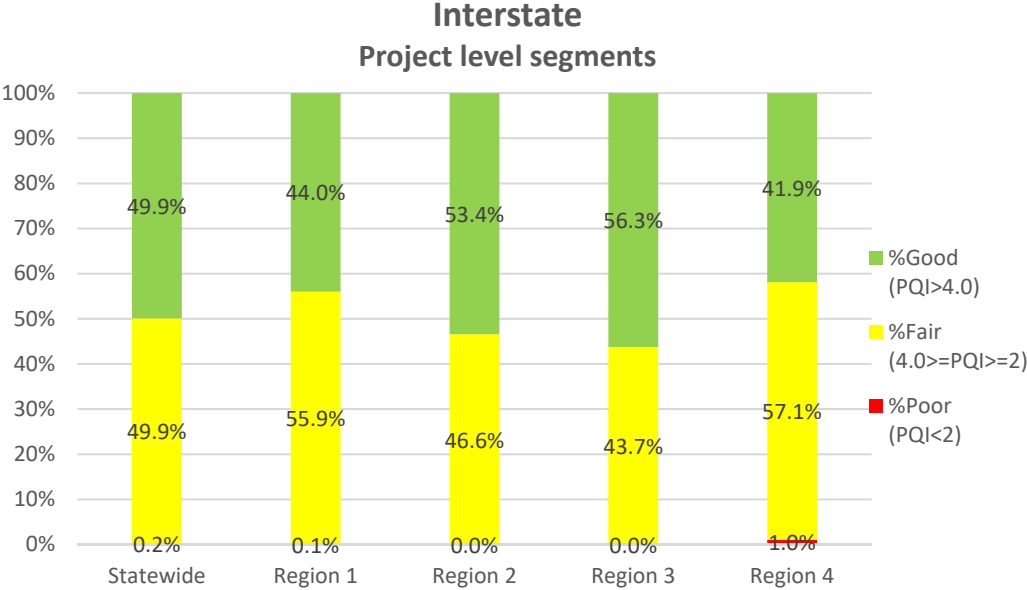
- Overall Index of the roadway on a scale from 0 – 5.
- Perfect is a “5”
- $PQI = PDI^{0.7} * PSI^{0.3}$
- PDI encompasses the largest portion of this index because Pavement Distresses indicate current problems and future deterioration of the roadway surface.

## Additional Notes for Consideration

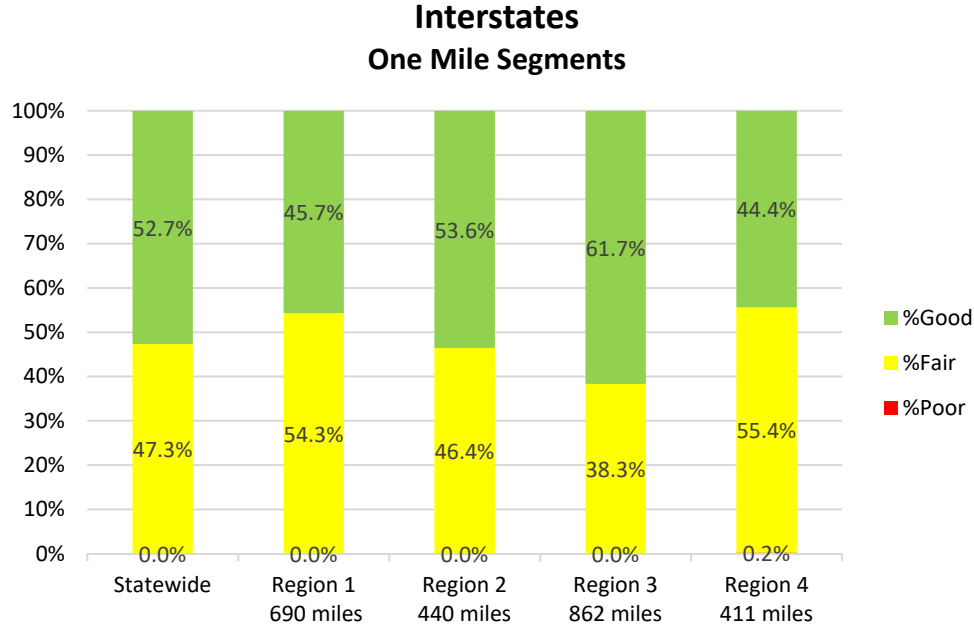
- Project length segments are created by breaking the roadway network into various-length “segments”, creating a new segment break at:
  - County lines
  - Changes in NHS/Non-NHS designation
  - Termini of known historical projects
  - Changes in pavement type (Concrete/Asphalt)
- Project length data and percentages are summarized by lane miles. One-mile segment data is processed by centerline miles.
- More information on TDOT’s definition of State of Good Repair including targets and calculation of good, fair and poor can be found in [TDOT’s Transportation Asset Management Plan \(TAMP\)](#).
- Non-NHS state route condition is collected biennially, or every other year. Region 1 and 2 non-NHS state routes are collected in even years and Regions 3 and 4 are collected in odd years. Interstate and NHS routes are collected every year. In an effort to provide a comprehensive report, full extent data from the previous years’ report is provided for off-cycle regions.

# 1. Statewide Pavement Conditions

## 1.1 Interstates

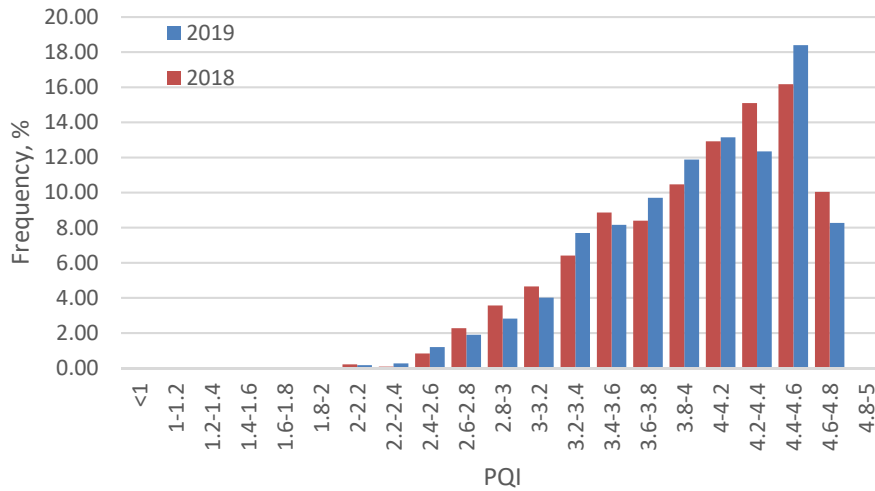
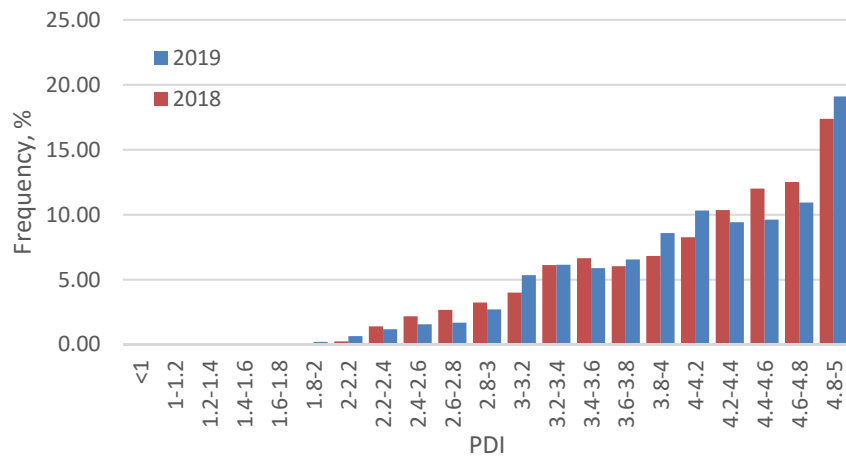
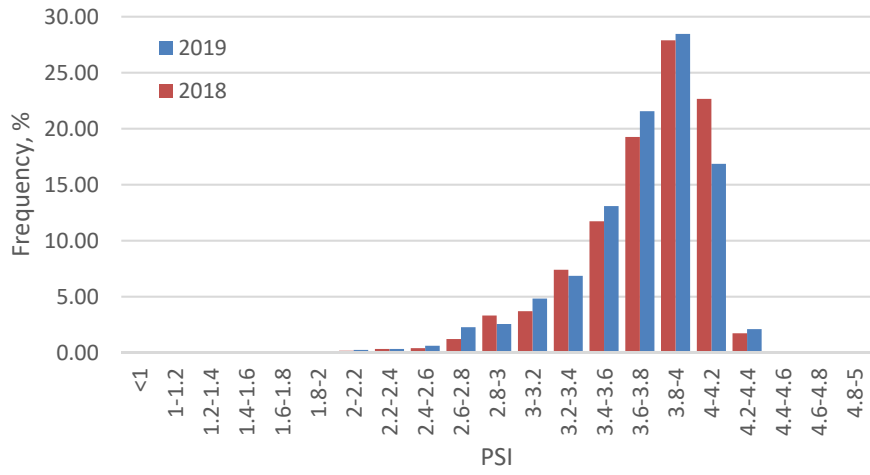


**(Average PQI=3.946 for 5.645 lane miles)**

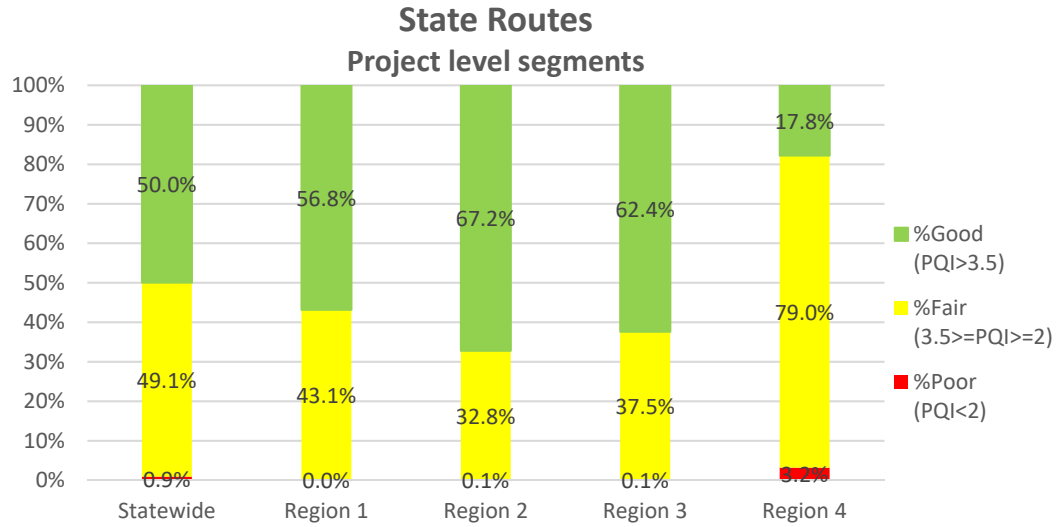


**(Average PQI=3.950 for 2403 centerline miles)**

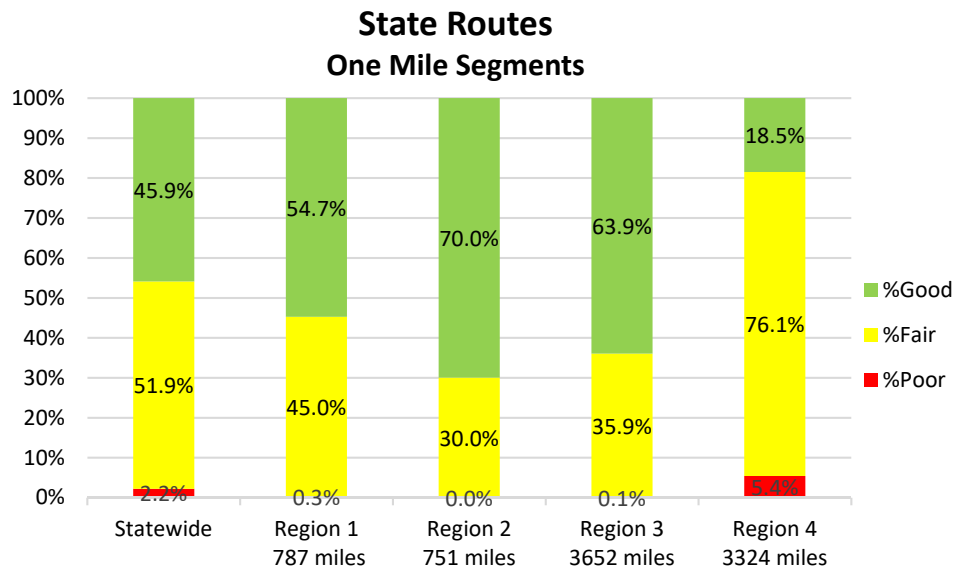
# Distribution of Interstate Pavement Condition Indices - (One Mile Segments)



## 1.2 State Routes

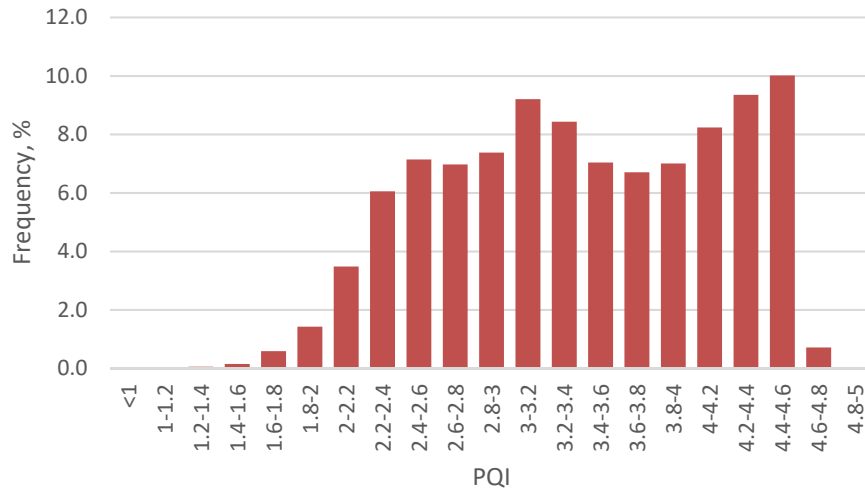
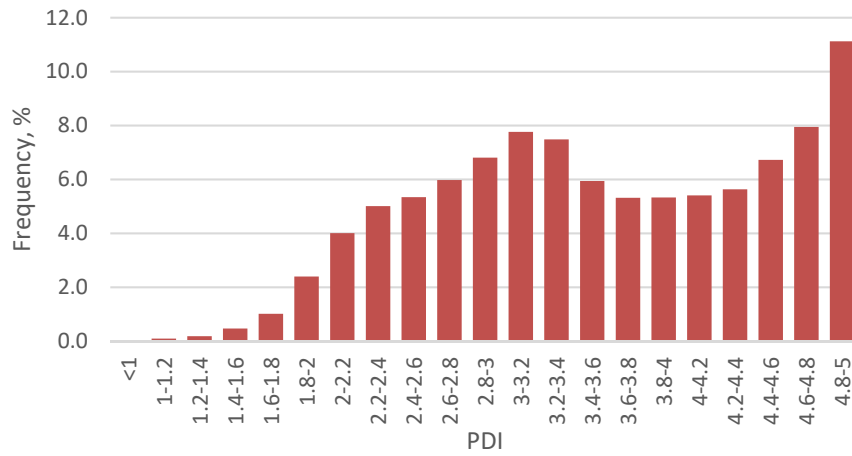
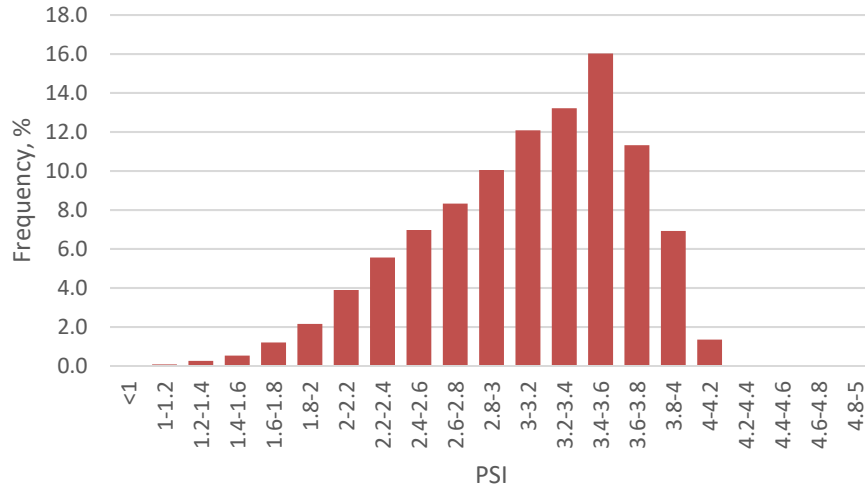


**(Average PQI=3.480 for 31,413 lane miles)**



**(Average PQI=3.393 for 8515 centerline miles)**

# Distribution of State Route Pavement Condition Indices (One Mile Segments)





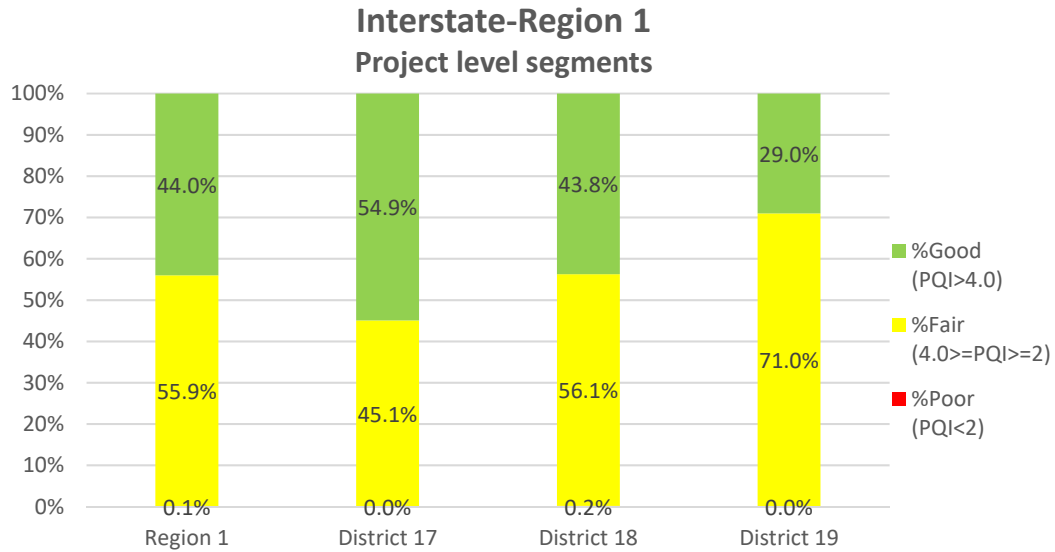
## 2. Region 1 Pavement Conditions *(Average of One Mile Segments)*

2019 Region 1 by District		Interstate				NHS State Route		
District	County	Average PSI	Average PDI	Average PQI	IRI<94 in./mi.*	Average PSI	Average PDI	Average PQI
17	10 CARTER	3.605	4.523	4.224	88.85%	3.451	4.000	3.821
17	30 GREENE	3.935	4.275	4.165	98.91%	3.636	3.833	3.752
17	32 HAMBLEN	3.992	4.119	4.079	98.99%	3.293	3.160	3.137
17	34 HANCOCK							
17	37 HAWKINS					3.471	3.137	3.216
17	46 JOHNSON					3.602	4.369	4.124
17	82 SULLIVAN	3.786	3.696	3.715	95.77%	3.256	3.494	3.401
17	86 UNICOI	3.651	3.816	3.761	89.04%			
17	90 WASHINGTON	3.935	4.780	4.507	96.07%	3.489	4.222	3.981
<b>Average</b>		<b>3.831</b>	<b>4.095</b>	<b>4.007</b>	<b>95.28%</b>	<b>3.396</b>	<b>3.621</b>	<b>3.528</b>
18	1 ANDERSON	3.745	4.422	4.197	95.46%	3.274	3.526	3.431
18	15 COCKE	3.649	4.054	3.914	91.01%	3.091	3.540	3.384
18	29 GRAINGER					3.556	4.037	3.865
18	45 JEFFERSON	3.603	3.836	3.755	92.06%	3.574	3.595	3.575
18	47 KNOX	3.528	3.908	3.774	84.73%	3.112	3.671	3.477
18	78 SEVIER	3.800	3.965	3.909	97.27%	3.371	4.256	3.962
18	87 UNION							
<b>Average</b>		<b>3.592</b>	<b>3.965</b>	<b>3.836</b>	<b>88.65%</b>	<b>3.251</b>	<b>3.797</b>	<b>3.609</b>
19	5 BLOUNT	3.034	2.887	2.924	61.11%	3.296	3.834	3.645
19	7 CAMPBELL	3.496	3.618	3.564	81.61%	3.485	3.593	3.540
19	13 CLAIBORNE					3.536	3.477	3.481
19	53 LOUDON	3.673	3.623	3.625	91.09%	3.116	3.357	3.270
19	62 MONROE	3.916	4.958	4.619	99.23%	3.371	3.856	3.692
19	65 MORGAN					3.184	3.564	3.427
19	73 ROANE	3.664	3.964	3.861	91.56%	3.540	4.130	3.932
19	76 SCOTT					3.386	3.638	3.526
<b>Average</b>		<b>3.608</b>	<b>3.791</b>	<b>3.721</b>	<b>87.61%</b>	<b>3.370</b>	<b>3.727</b>	<b>3.598</b>
<b>Region 1</b>				<b>3.867</b>	<b>90.74%</b>			<b>3.575</b>

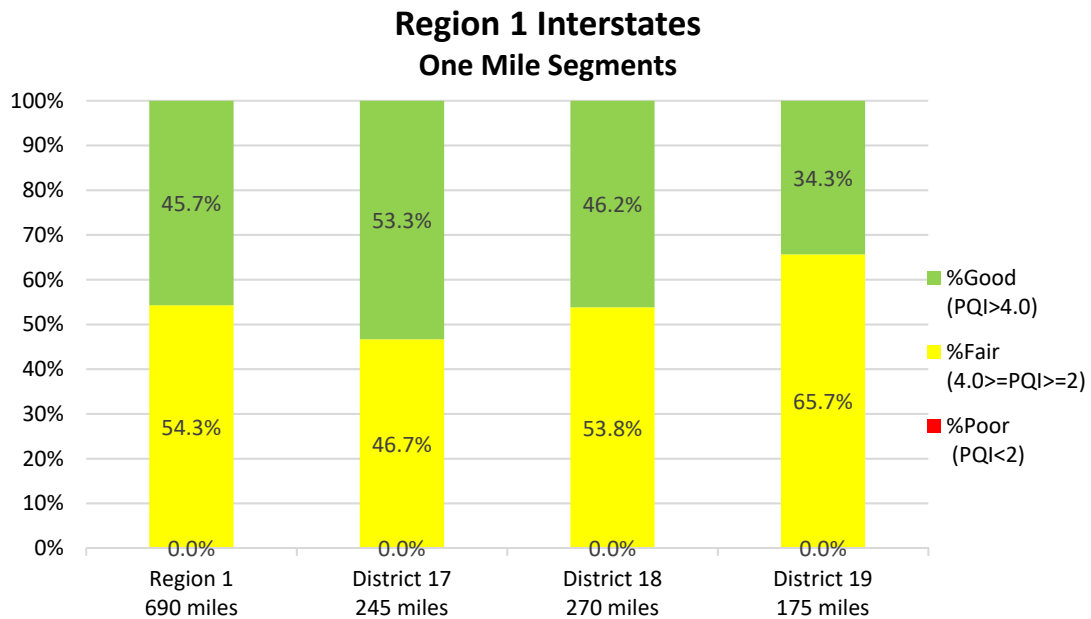
\*Only NHS State Routes were collected in Region 1 for 2019

Note: Percentage of IRI<=94 in./mi. is calculated based on unit length of 0.1 mile.

## 2.1 Region 1 Interstates

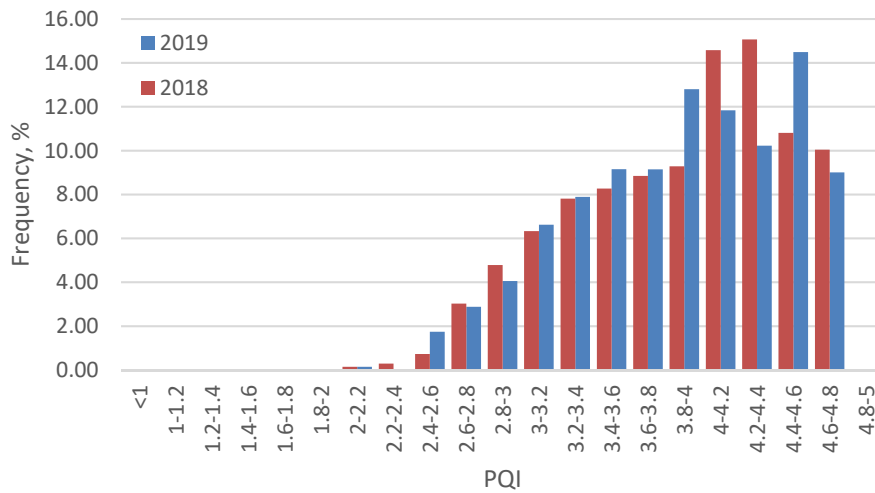
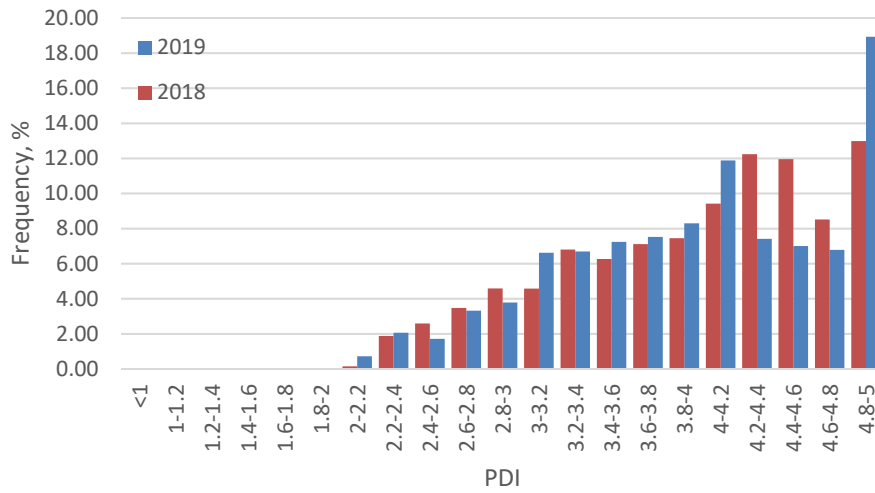
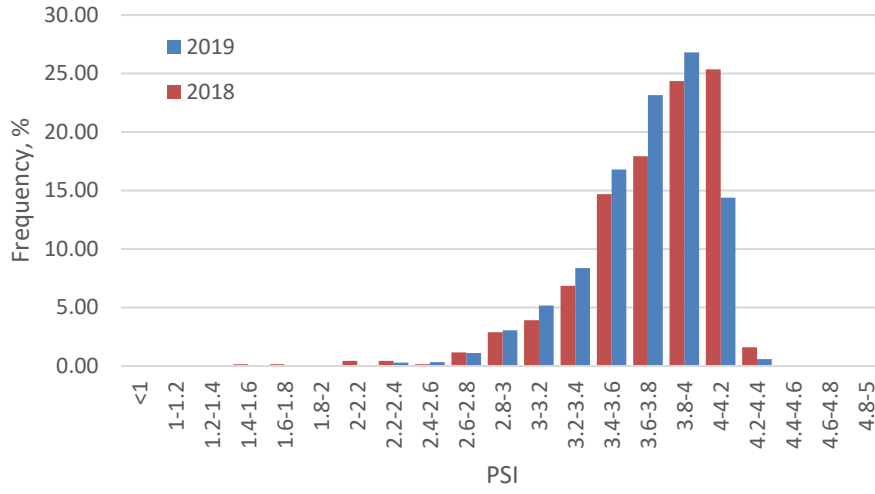


**(Average PQI=3.875 for 1,559 lane miles)**



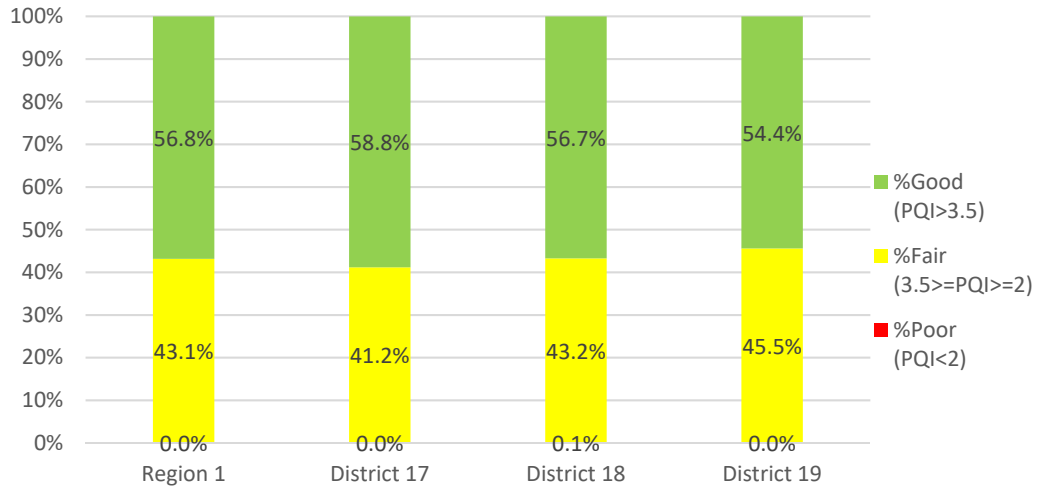
**(Average PQI=3.867 for 690 centerline miles)**

# Distribution of Pavement Condition Indices- Region 1 Interstates (One Mile Segments)



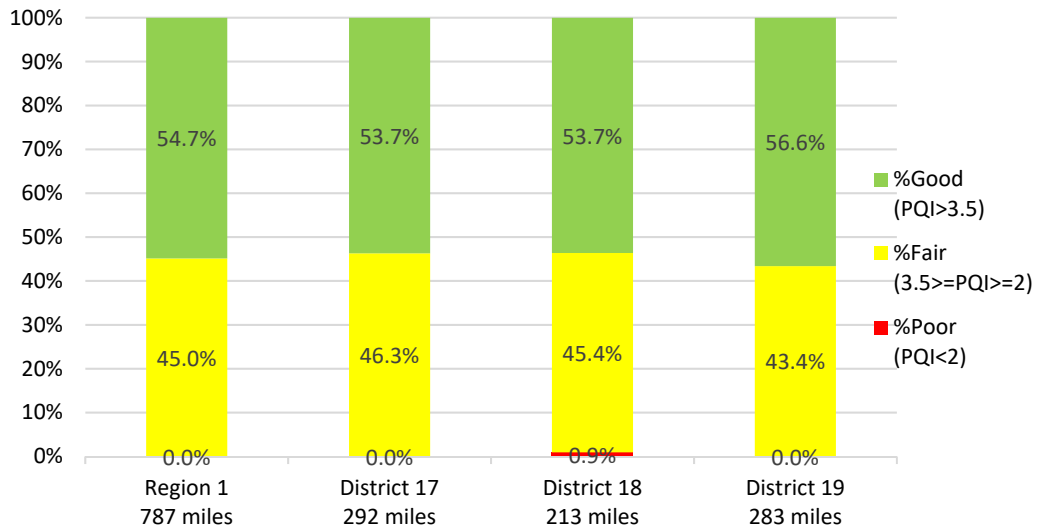
## 2.2 Region 1 State Routes

**State Routes-Region 1  
Project level segments**



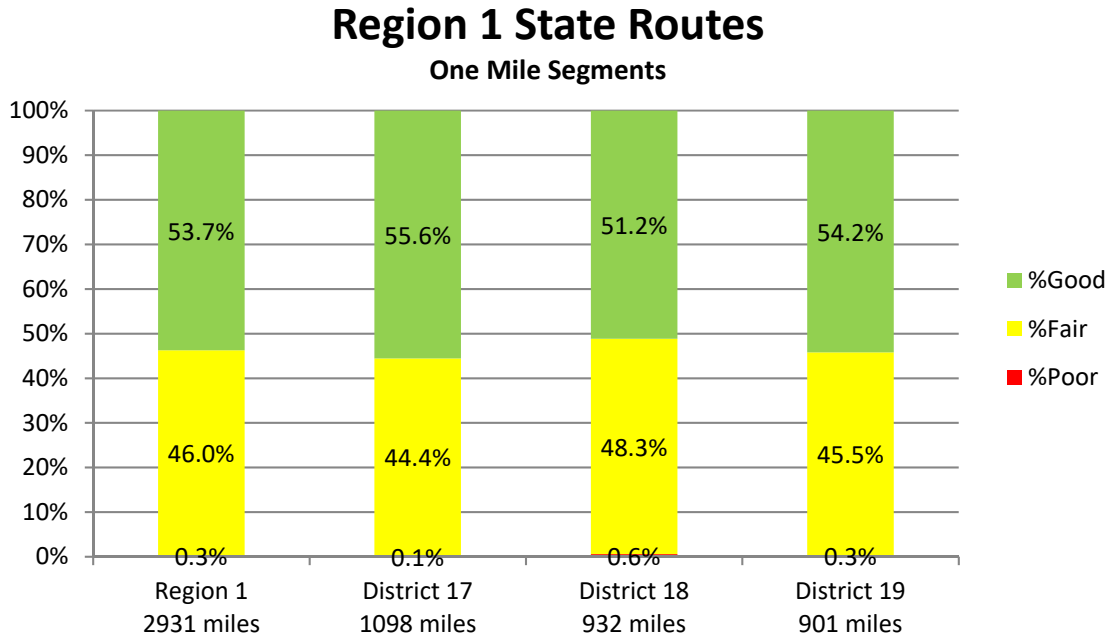
**(Average PQI=3.635 for 7,428 lane miles)**

**Region 1 NHS State Routes  
One Mile Segments**



**(Average PQI=3.575 for 787 centerline miles)**

## 2.3 Region 1 State Routes, 2018



**(Average PQI=3.556 for 2931 centerline miles)**

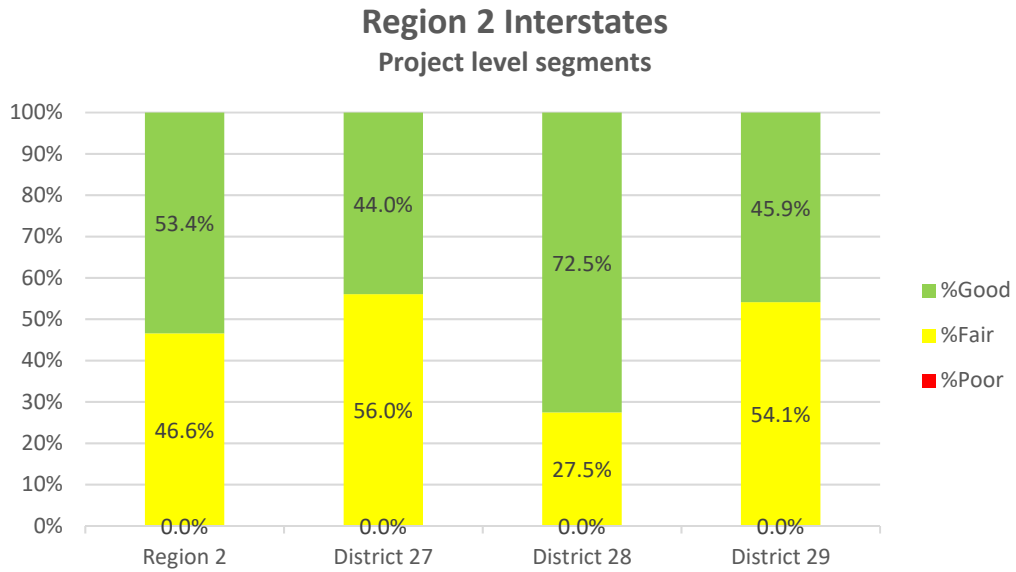
Data from the figure on this page were from 2018 pavement data delivery

### 3. Region 2 Pavement Conditions *(Average of One Mile Segments)*

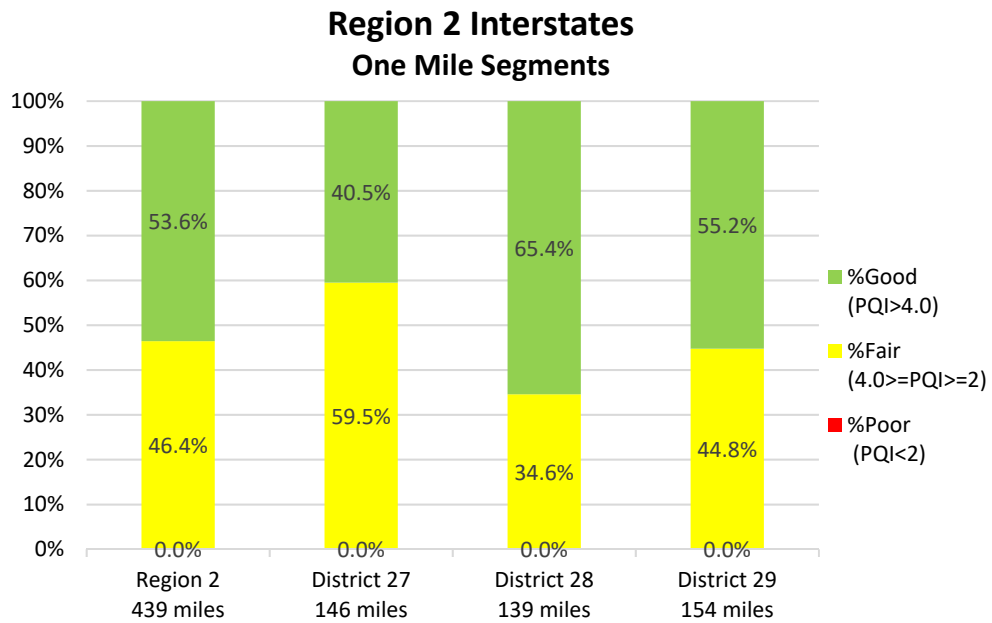
2019 Region 2 by District		Interstate				NHS State Route		
District	County	Average PSI	Average PDI	Average PQI	IRI<94 In./mi.	Average PSI	Average PDI	Average PQI
27	14 CLAY					3.406	4.109	3.880
27	18 CUMBERLAND	4.050	3.760	3.836	99.03%	3.489	3.742	3.643
27	21 DEKALB							
27	25 FENTRESS					3.337	3.675	3.563
27	44 JACKSON							
27	67 OVERTON					3.836	4.330	4.170
27	69 PICKETT					3.655	4.475	4.209
27	71 PUTNAM	4.069	3.795	3.869	99.33%	3.366	3.950	3.761
27	93 WHITE					3.632	4.201	4.004
<b>Average</b>		<b>4.060</b>	<b>3.778</b>	<b>3.853</b>	<b>99.18%</b>	<b>3.533</b>	<b>4.042</b>	<b>3.871</b>
28	4 BLEDSOE					3.651	4.111	3.963
28	8 CANNON					3.668	3.792	3.747
28	16 COFFEE	3.902	4.195	4.099	98.24%	3.520	3.565	3.540
28	26 FRANKLIN					3.509	3.816	3.710
28	31 GRUNDY	3.773	3.763	3.763	91.11%	3.050	3.830	3.580
28	58 MARION	3.900	4.380	4.223	97.67%	3.381	3.837	3.692
28	77 SEQUATCHIE					3.535	3.753	3.670
28	88 VAN BUREN					3.953	3.976	3.961
28	89 WARREN					3.653	3.641	3.640
<b>Average</b>		<b>3.887</b>	<b>4.235</b>	<b>4.121</b>	<b>97.23%</b>	<b>3.593</b>	<b>3.796</b>	<b>3.724</b>
29	6 BRADLEY	3.813	4.276	4.128	99.72%	3.542	4.193	3.980
29	33 HAMILTON	3.231	4.068	3.781	67.04%	3.130	3.947	3.669
29	54 MCMINN	3.816	4.935	4.567	99.40%	3.385	3.686	3.569
29	61 MEIGS					3.404	4.173	3.923
29	70 POLK					3.421	4.250	3.977
29	72 RHEA					3.328	4.004	3.774
<b>Average</b>		<b>3.567</b>	<b>4.402</b>	<b>4.124</b>	<b>85.76%</b>	<b>3.291</b>	<b>4.027</b>	<b>3.778</b>
<b>Region 2</b>				<b>4.033</b>	<b>93.86%</b>			<b>3.785</b>

\*Only NHS State Routes were collected in Region 2 for 2019

### 3.1 Region 2 Interstates

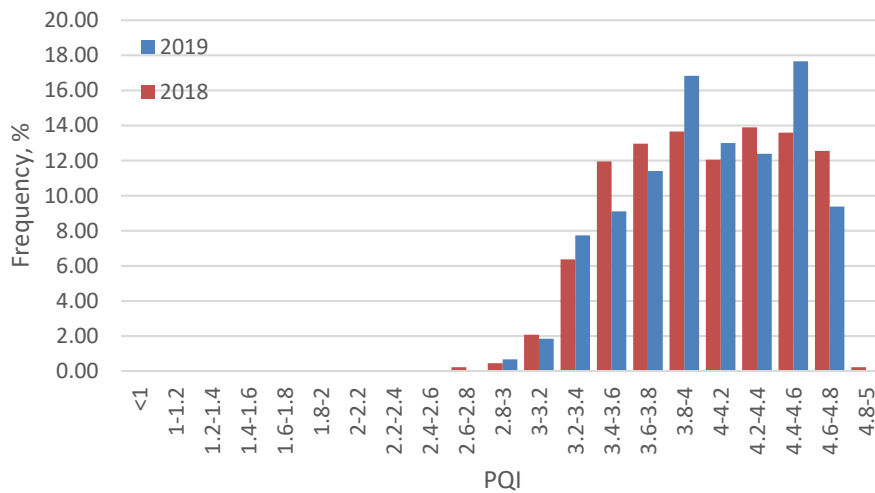
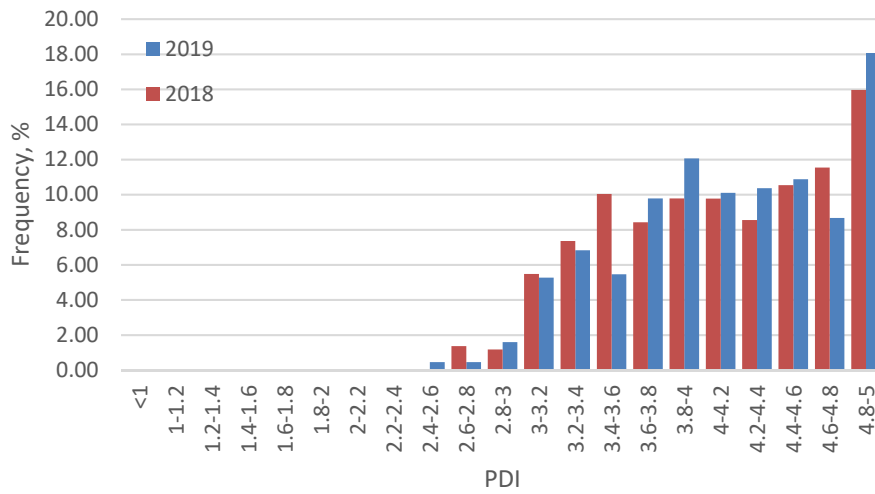
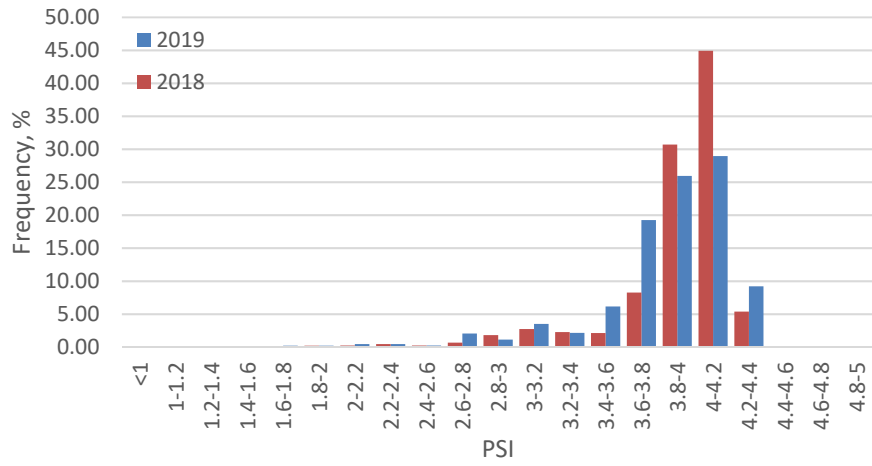


**(Average PQI=4.016 for 960 lane miles)**



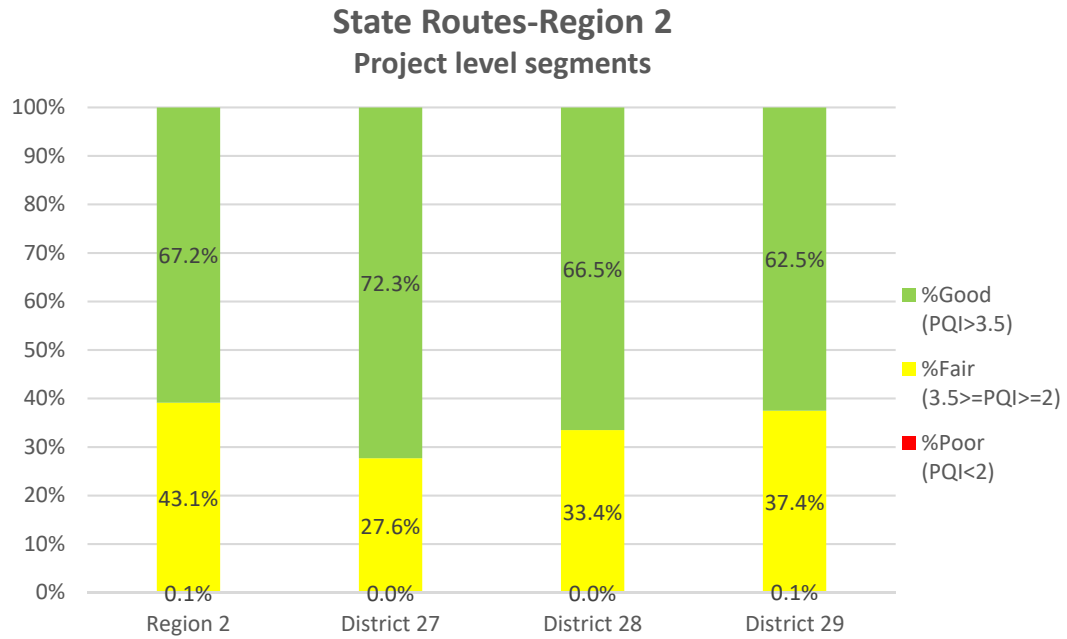
**(Average PQI=4.033 for 439 centerline miles)**

## Distribution of Pavement Condition Indices- Region 2 Interstates (One Mile Segments)

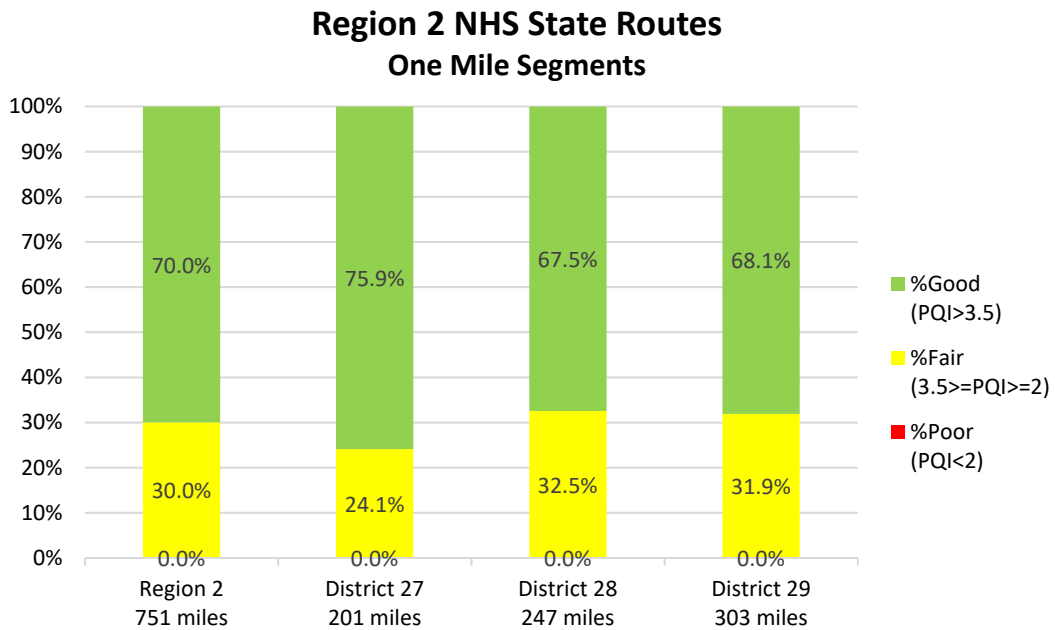




### 3.2 Region 2 State Routes

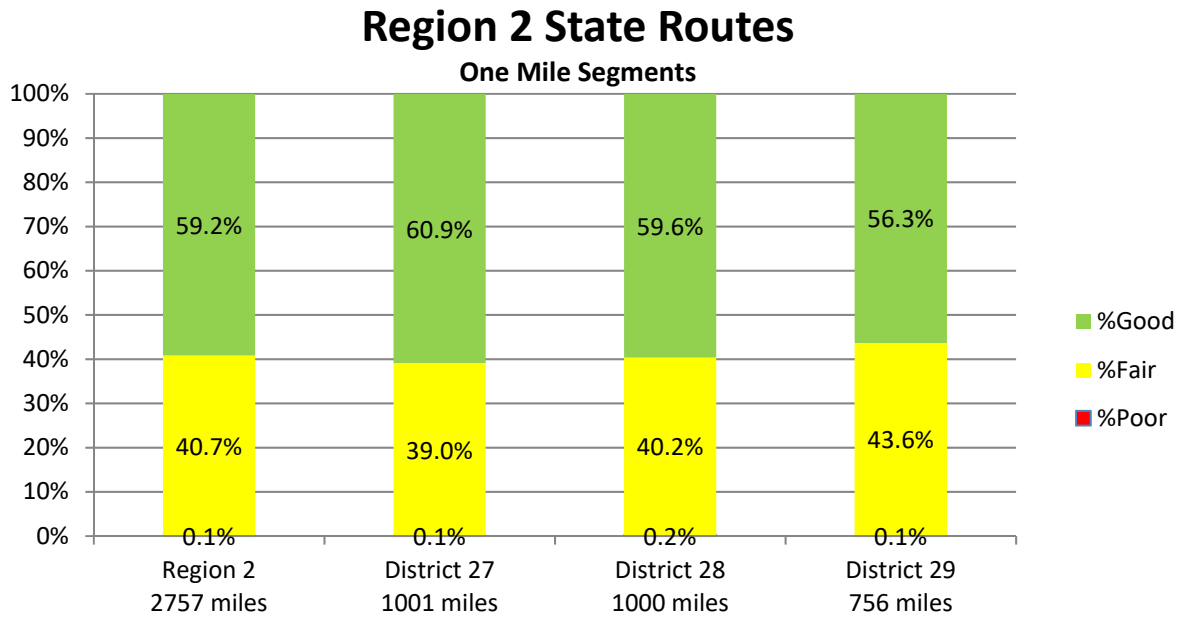


**(Average PQI=3.744 for 6.667 lane miles)**



**(Average PQI=3.785 for 751 centerline miles)**

### 3.3 Region 2 State Routes, 2018



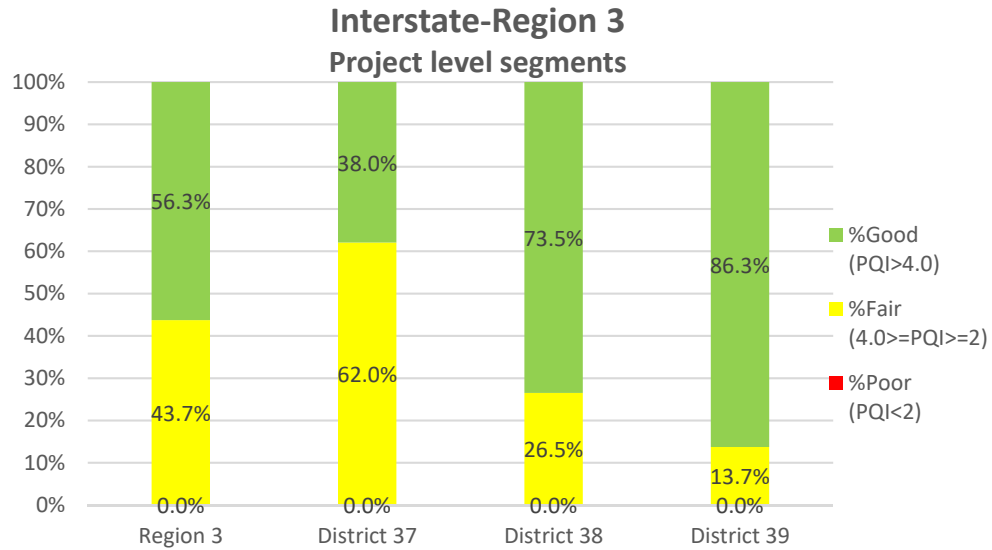
**(Average PQI=3.624 for 2757 centerline miles)**

Data from the figure in this page were from 2018 pavement data delivery

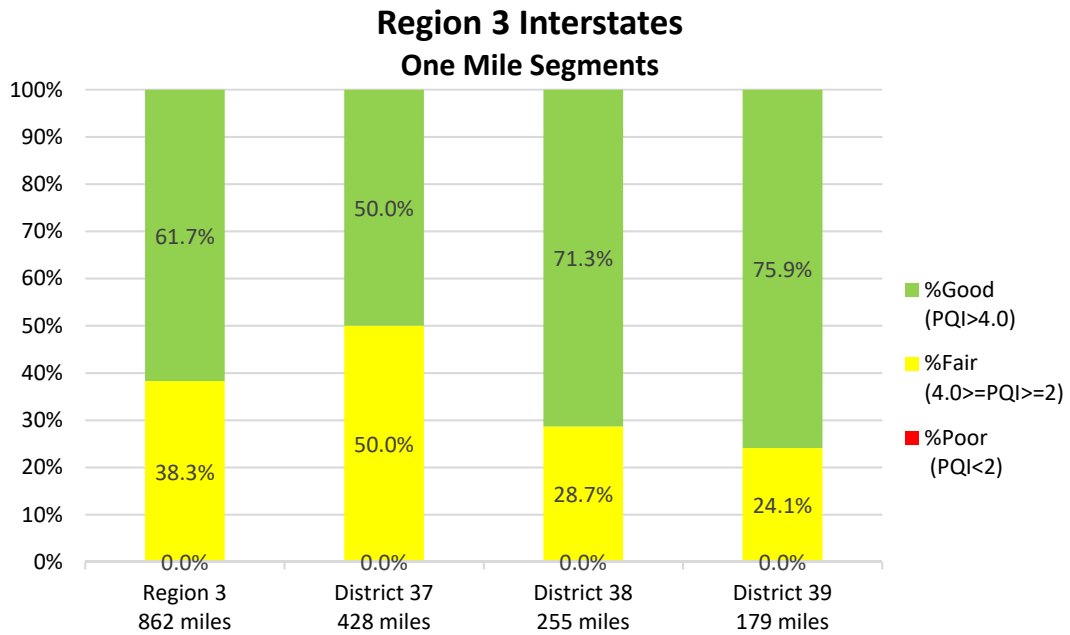
#### 4. Region 3 Pavement Conditions *(Average of One Mile Segments)*

2019 Region 3 by District		Interstate				State Route		
District	County	Average PSI	Average PDI	Average PQI	IRI< 94in./mi.	Average PSI	Average PDI	Average PQI
37	19 DAVIDSON	3.457	4.087	3.873	78.19%	2.982	3.713	3.462
37	56 MACON					3.152	4.334	3.929
37	80 SMITH	3.977	3.901	3.913	97.12%	3.163	4.257	3.886
37	83 SUMNER	3.601	3.259	3.346	91.55%	3.254	3.680	3.521
37	85 TROUSDALE					3.265	4.065	3.801
37	94 WILLIAMSON	3.558	4.411	4.128	87.36%	3.157	3.951	3.682
37	95 WILSON	3.789	4.248	4.099	94.83%	3.112	3.915	3.642
<b>Average</b>		<b>3.592</b>	<b>4.174</b>	<b>3.978</b>	<b>85.79%</b>	<b>3.131</b>	<b>3.899</b>	<b>3.634</b>
38	11 CHEATHAM	3.783	4.629	4.356	95.65%	3.591	4.356	4.102
38	22 DICKSON	3.829	4.124	4.021	93.15%	3.586	4.297	4.062
38	41 HICKMAN	3.807	4.277	4.121	92.41%	3.509	4.153	3.941
38	42 HOUSTON					3.593	4.560	4.243
38	43 HUMPHREYS	3.768	4.427	4.217	92.40%	3.607	4.216	4.017
38	60 MAURY	3.899	4.615	4.384	98.87%	3.339	3.878	3.693
38	63 MONTGOMERY	3.924	4.562	4.358	99.13%	3.332	3.695	3.545
38	74 ROBERTSON	3.583	3.959	3.827	87.64%	3.349	4.011	3.787
38	81 STEWART					3.296	4.053	3.800
<b>Average</b>		<b>3.783</b>	<b>4.312</b>	<b>4.137</b>	<b>93.57%</b>	<b>3.441</b>	<b>4.065</b>	<b>3.856</b>
39	2 BEDFORD	3.305	3.955	3.750	83.33%	3.387	4.082	3.847
39	28 GILES	3.739	4.251	4.088	95.67%	3.348	4.043	3.803
39	50 LAWRENCE					3.365	4.035	3.808
39	51 LEWIS					3.447	4.282	4.001
39	52 LINCOLN					3.250	3.740	3.568
39	59 MARSHALL	3.962	4.366	4.237	98.44%	3.277	3.969	3.737
39	64 MOORE					3.248	3.905	3.685
39	68 PERRY					3.311	4.259	3.942
39	75 RUTHERFORD	3.794	4.495	4.267	95.36%	3.246	3.798	3.604
39	91 WAYNE					3.143	3.910	3.646
<b>Average</b>		<b>3.802</b>	<b>4.413</b>	<b>4.216</b>	<b>95.82%</b>	<b>3.296</b>	<b>3.971</b>	<b>3.740</b>
<b>Region 3</b>				<b>4.075</b>	<b>90.18%</b>			<b>3.746</b>

## 4.1 Region 3 Interstates

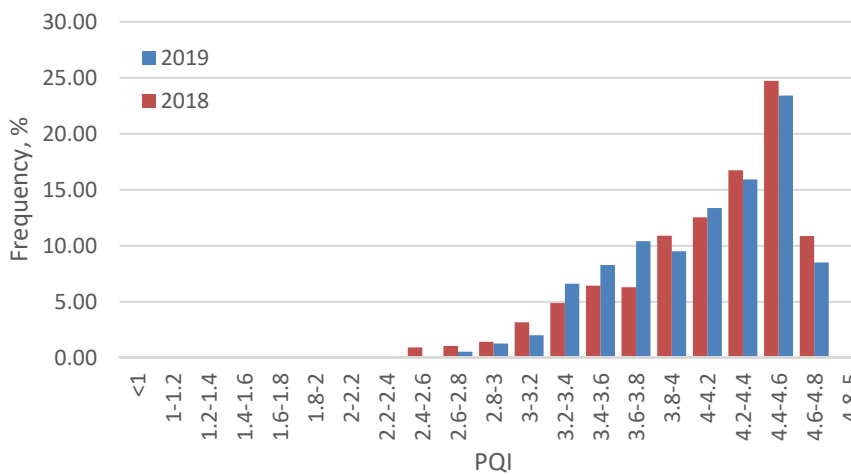
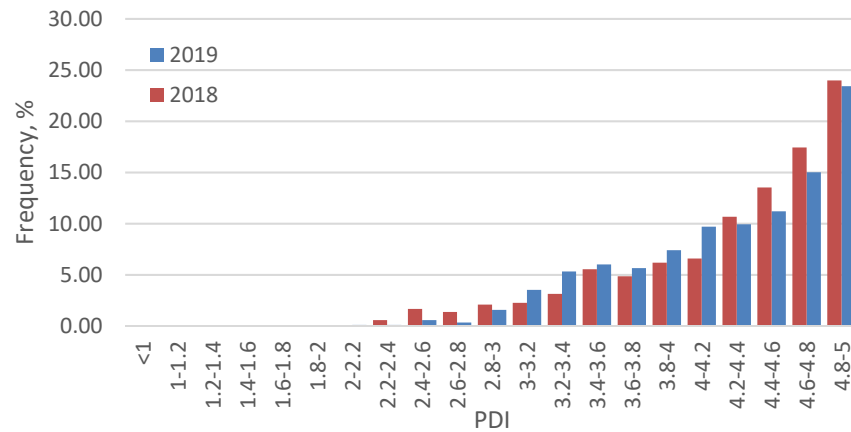
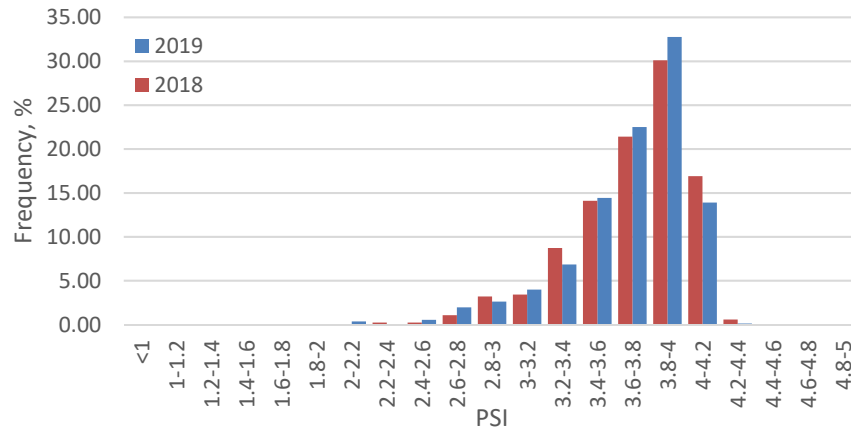


**(Average PQI=4.051 for 2.156 lane miles)**

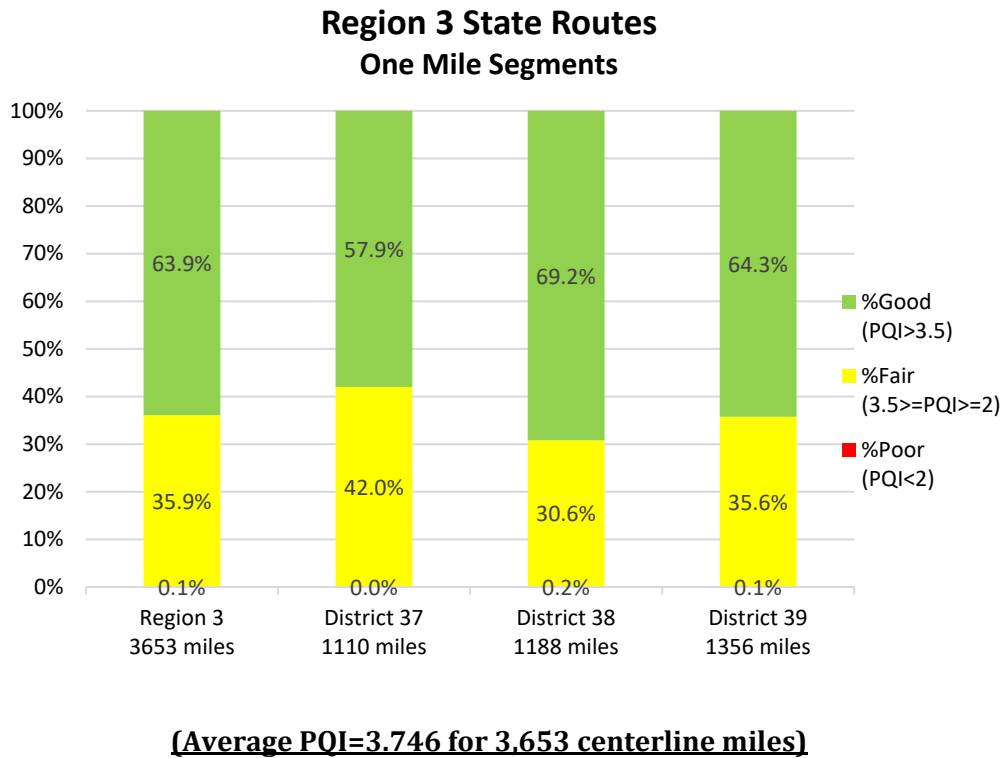
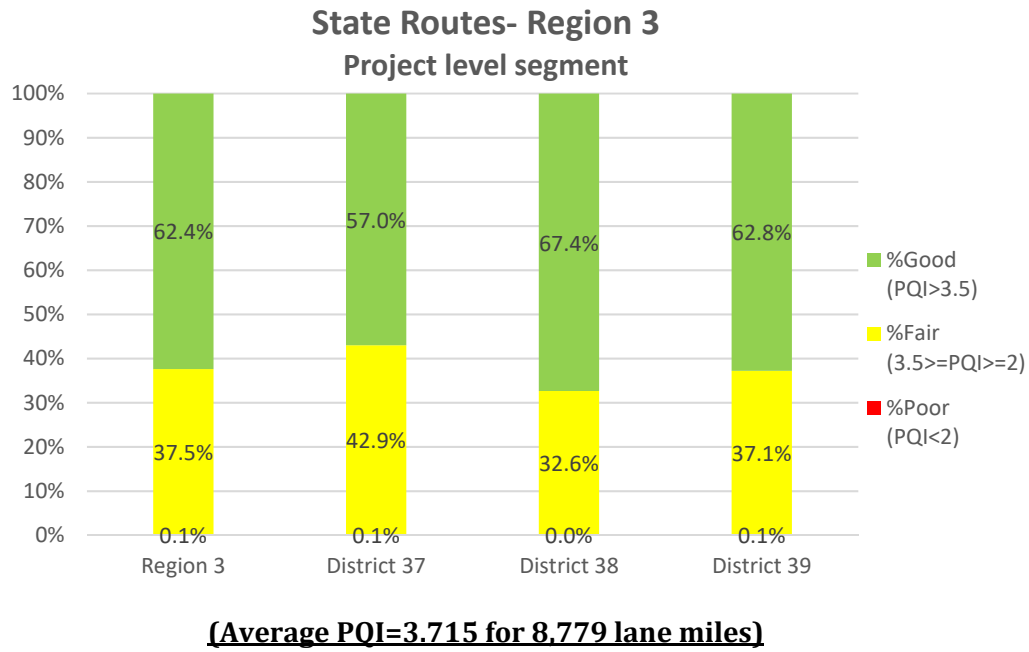


**(Average PQI=4.075 for 862 centerline miles)**

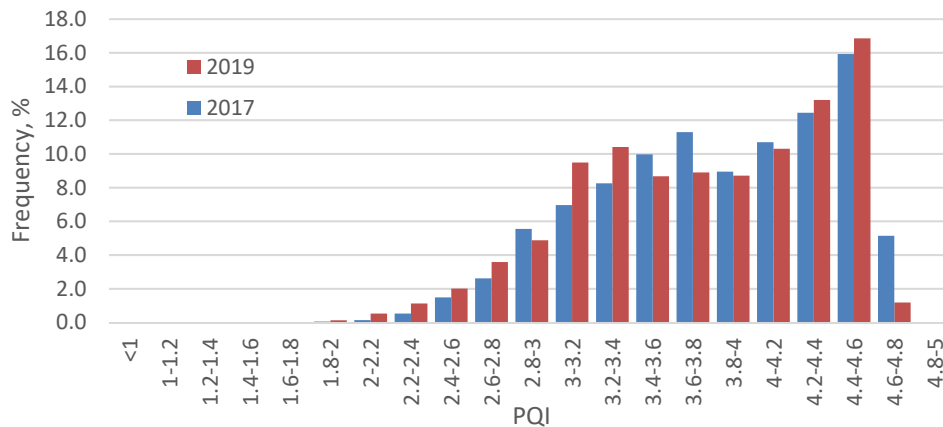
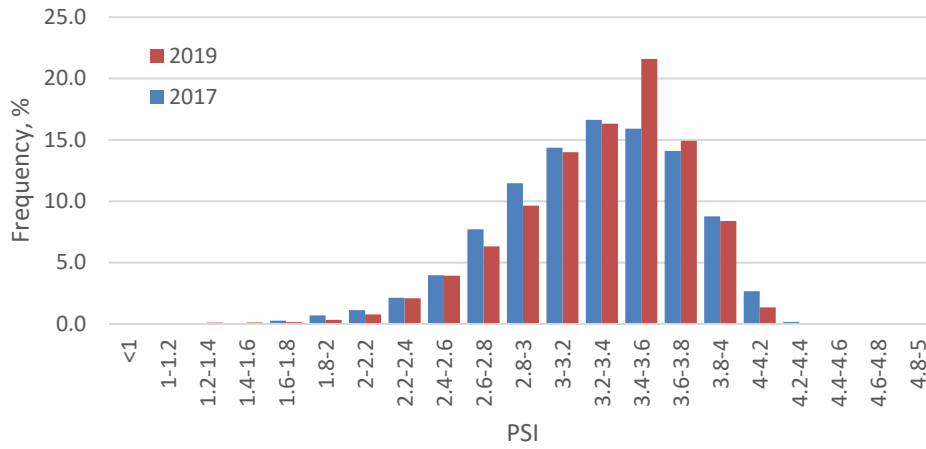
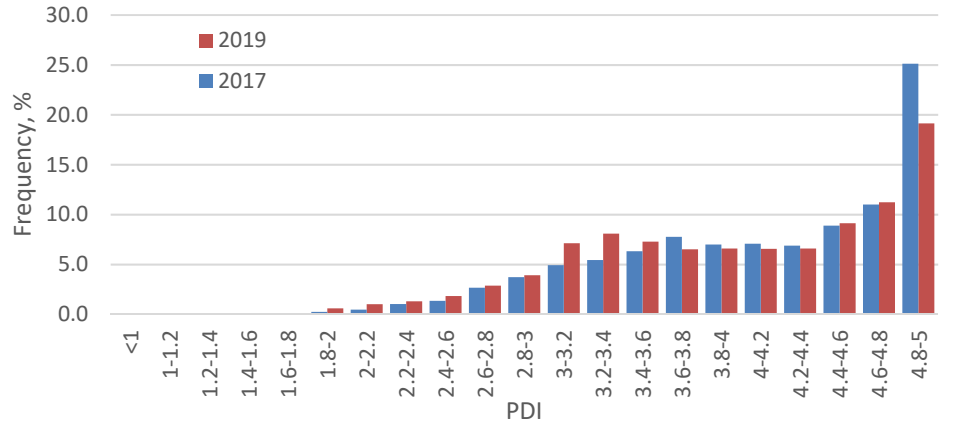
# Distribution of Pavement Condition Indices- Region 3 Interstates, One Mile Segments



## 4.2 Region 3 State Routes



## Distribution of Pavement Condition Indices - Region 3 State Routes (One Mile Segments)

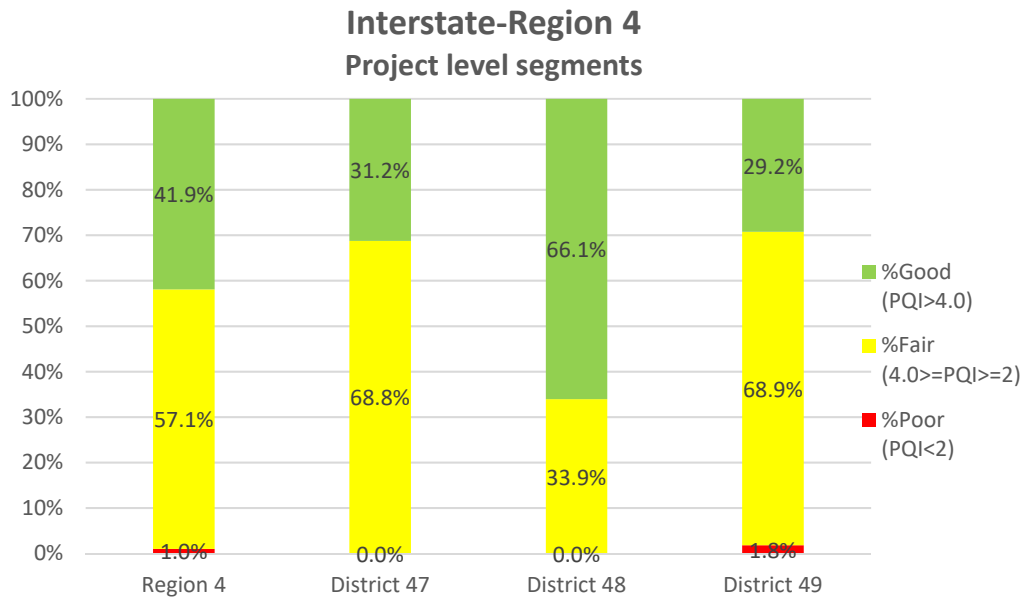


## 5. Region 4 Pavement Conditions *(Average of One Mile Segments)*

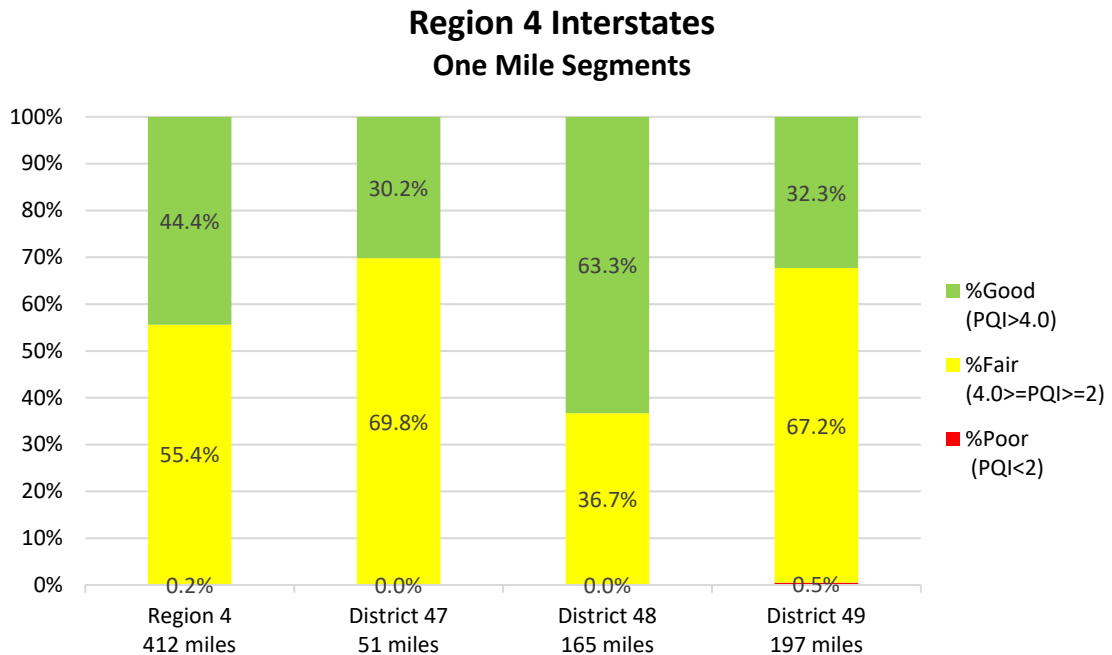
2019 Region 4 by District		Interstate				State Route		
District	County	Average PSI	Average PDI	Average PQI	IRI<94 In./mi.	Average PSI	Average PDI	Average PQI
47	3 BENTON	3.892	4.497	4.303	92.82%	2.993	3.171	3.096
47	9 CARROLL	4.150	4.800	4.590	83.33%	2.612	2.838	2.751
47	23 DYER	3.690	2.702	2.942	89.33%	2.648	2.594	2.593
47	27 GIBSON					2.662	2.753	2.712
47	40 HENRY					2.807	2.684	2.676
47	48 LAKE					2.449	2.836	2.703
47	66 OBION					2.740	2.853	2.795
47	92 WEAKLEY					2.716	3.076	2.940
<b>Average</b>		<b>3.772</b>	<b>3.377</b>	<b>3.456</b>	<b>90.39%</b>	<b>2.708</b>	<b>2.833</b>	<b>2.775</b>
48	12 CHESTER					2.968	3.402	3.238
48	17 CROCKETT					2.825	2.716	2.730
48	20 DECATUR	3.921	2.322	2.714	98.24%	2.738	3.039	2.927
48	35 HARDEMAN					2.891	3.154	3.050
48	36 HARDIN					2.871	2.842	2.824
48	38 HAYWOOD	3.952	4.421	4.266	97.49%	2.565	2.850	2.749
48	39 HENDERSON	3.964	4.530	4.349	97.16%	2.794	3.100	2.979
48	55 MCNAIRY					2.682	2.988	2.875
48	57 MADISON	3.262	3.836	3.649	70.86%	2.800	3.071	2.964
<b>Average</b>		<b>3.719</b>	<b>4.110</b>	<b>3.974</b>	<b>88.39%</b>	<b>2.787</b>	<b>3.011</b>	<b>2.920</b>
49	24 FAYETTE	3.574	3.279	3.344	89.98%	2.965	3.169	3.087
49	49 LAUDERDALE					2.840	3.155	3.040
49	79 SHELBY	3.378	3.870	3.705	75.99%	2.496	3.123	2.897
49	84 TIPTON					2.718	3.132	2.966
<b>Average</b>		<b>3.425</b>	<b>3.728</b>	<b>3.619</b>	<b>79.35%</b>	<b>2.719</b>	<b>3.142</b>	<b>2.984</b>
<b>Region 4</b>				<b>3.741</b>	<b>84.32%</b>			<b>2.874</b>



## 5.1 Region 4 Interstates

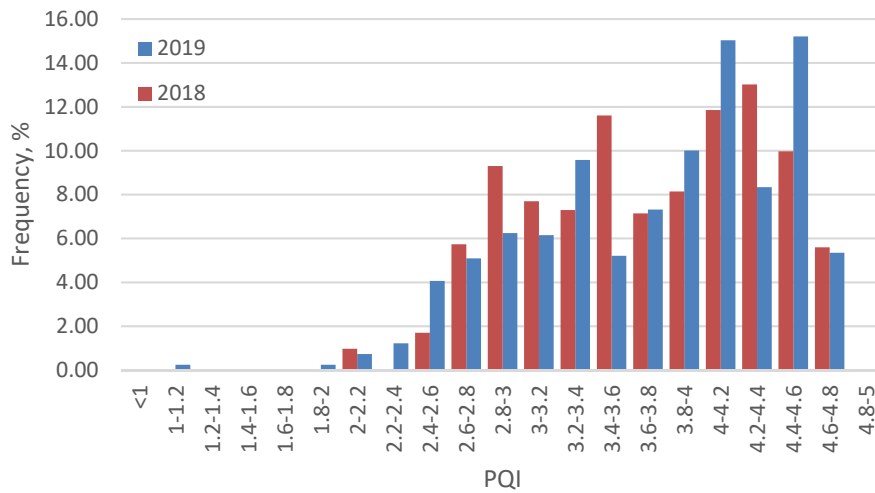
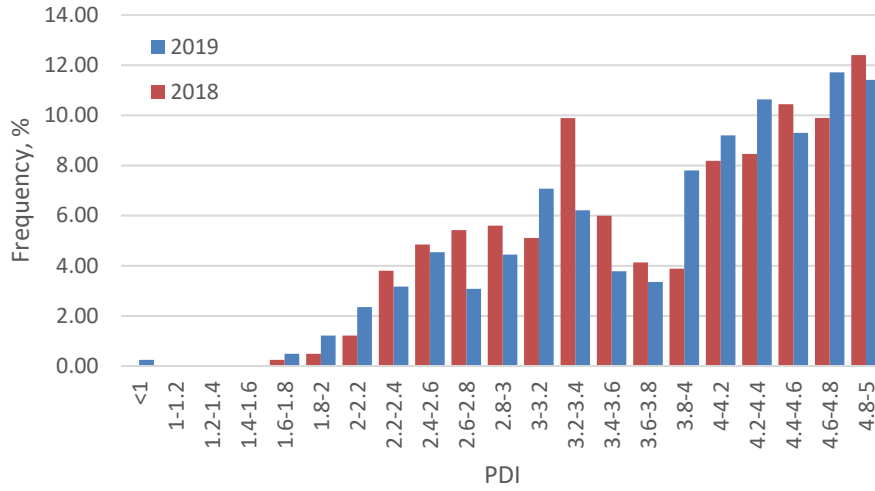
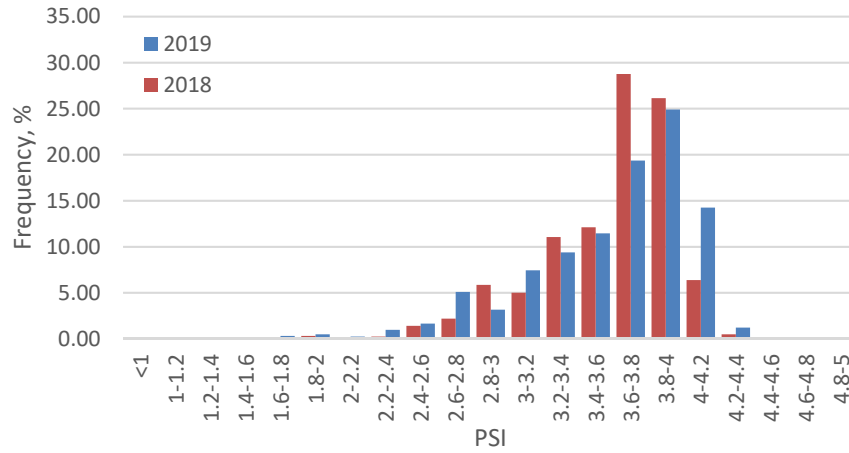


**(Average PQI=3.759 for 971 lane miles)**



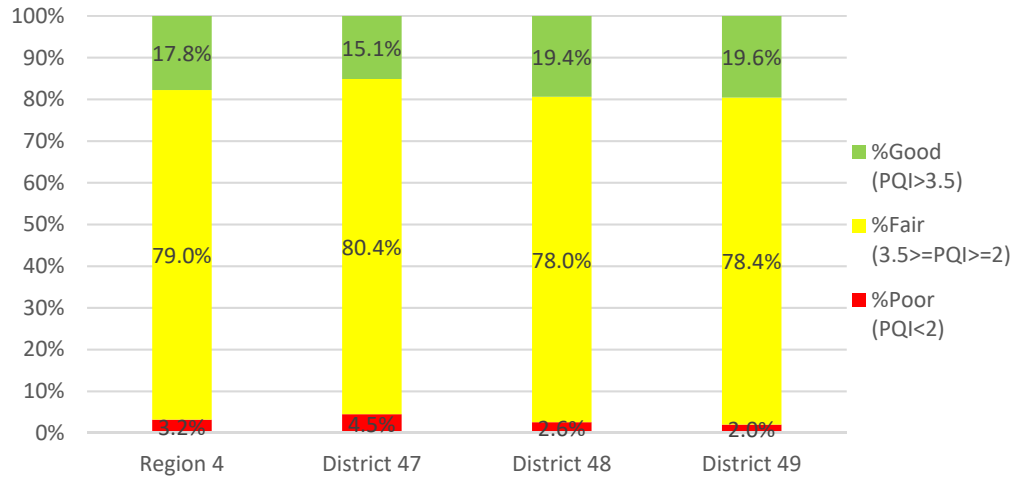
**(Average PQI=3.741 for 411 centerline miles)**

# Distribution of Pavement Condition Indices- Region 4 Interstates, One Mile Segments



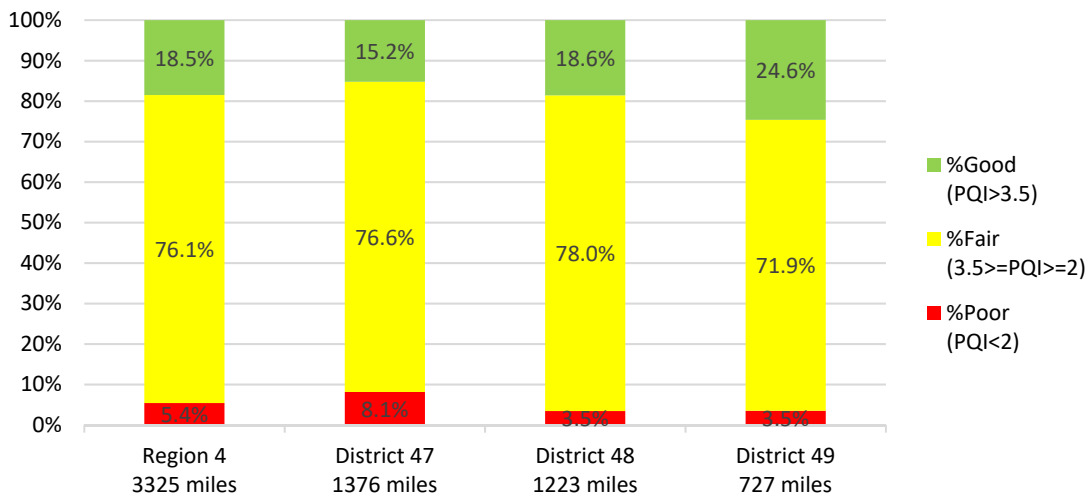
## 5.2 Region 4 State Routes

**State Routes- Region 4  
Project level segments**



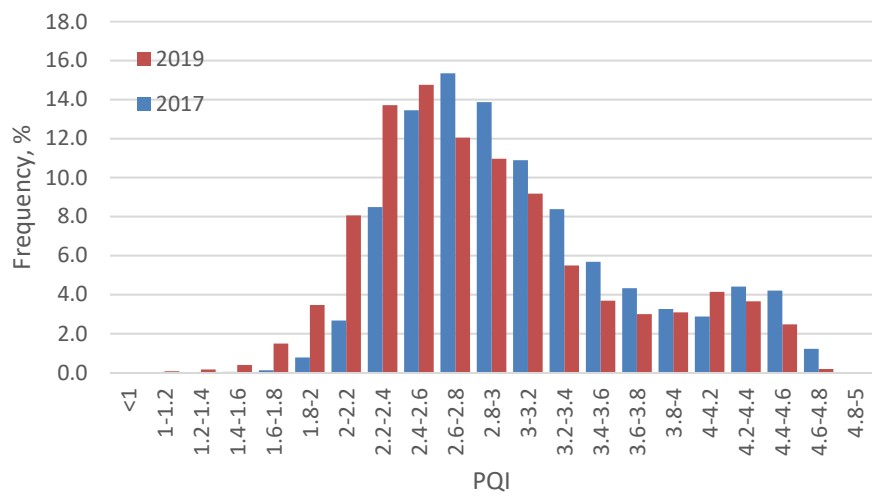
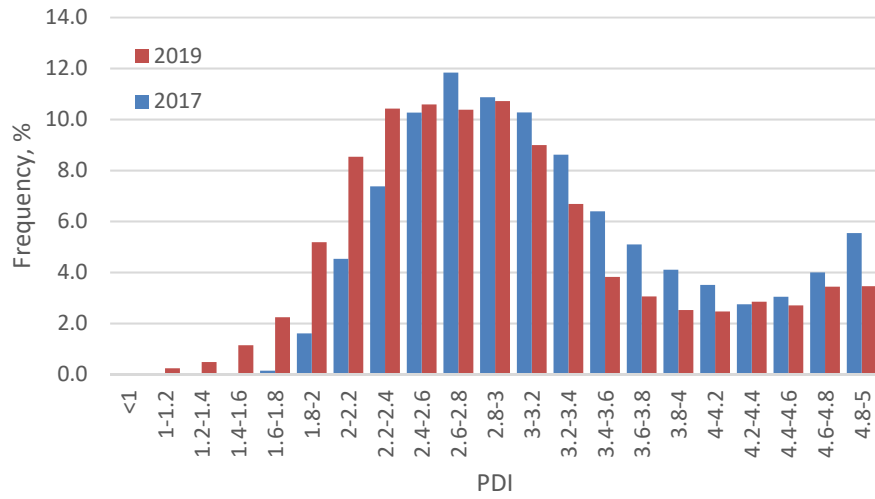
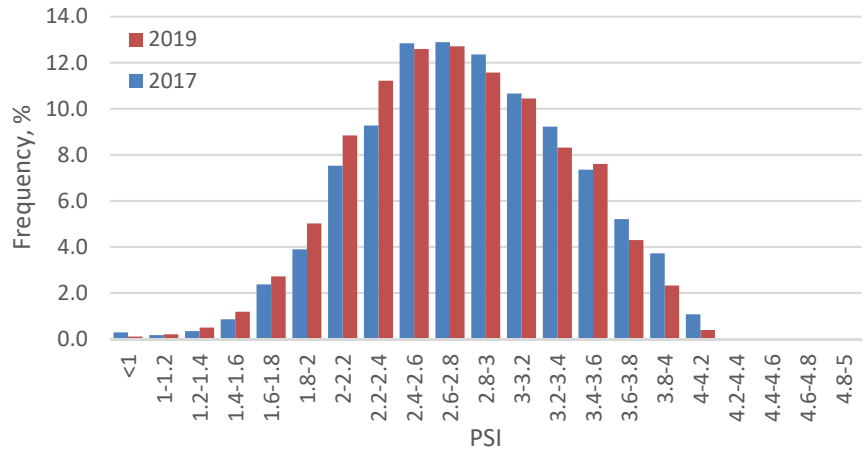
**(Average PQI=2.897 for 8,540 lane miles)**

**Region 4 State Routes  
One Mile Segments**



**(Average PQI=2.874 for 3,324 centerline miles)**

# Distribution of Pavement Condition Indices- Region 4 State Routes, One Mile Segments



## Appendix I: List of segments in poor condition (1-mile segment)

County #	COUNTY	Region	District	Route Type	Route Number	County Sequence	Special Case	Direction	Begin Log Mile	End Log Mile	IRI	HCIRI	Rut Depth	PSI	PDI	PQI
79	SHELBY	4	49	I	40	1		P	5	6	191.92	167.11	0.12	1.74	0.92	1.11
3	BENTON	4	47	SR	1	1		P	9	10	121.71	95.67	0.26	2.56	1.31	1.6
3	BENTON	4	47	SR	1	1		P	10	11	97.17	74.6	0.18	2.93	1.44	1.78
3	BENTON	4	47	SR	1	1		P	11	12	115.43	95.11	0.17	2.65	1.51	1.79
3	BENTON	4	47	SR	191	1	SB	P	0	0.06	388.56	366.4	0.17	0.59	1.76	1.27
3	BENTON	4	47	SR	391	1		P	2	3	106.07	87.85	0.11	2.79	1.55	1.85
3	BENTON	4	47	SR	391	1		P	5	5.31	106.72	84.97	0.13	2.78	1.73	1.99
9	CARROLL	4	47	SR	1	1		P	10	11	103.48	86.72	0.22	2.83	1.68	1.96
9	CARROLL	4	47	SR	1	1		P	11	12	118.9	99.16	0.17	2.6	1.52	1.79
9	CARROLL	4	47	SR	1	1		P	12	13	122.43	103.55	0.13	2.55	1.72	1.94
9	CARROLL	4	47	SR	22	1		P	6	7	180.77	147.51	0.13	1.85	2.06	1.99
9	CARROLL	4	47	SR	22	1	BYP	P	0	1	126.03	95.64	0.22	2.5	1.81	1.99
9	CARROLL	4	47	SR	22	1	BYP	P	1	2	123.14	94.91	0.22	2.54	1.08	1.4
9	CARROLL	4	47	SR	22	1	BYP	P	2	3	138.83	101.46	0.17	2.33	1.71	1.88
9	CARROLL	4	47	SR	22	1	BYP	P	3	3.59	147.62	107.88	0.18	2.22	1.33	1.55
9	CARROLL	4	47	SR	76	1		P	15	16	112.03	91.2	0.16	2.7	1.27	1.59
9	CARROLL	4	47	SR	77	1		P	7	8	146.81	116.45	0.15	2.23	1.86	1.96
9	CARROLL	4	47	SR	77	1		P	8	9	130.44	102.98	0.12	2.44	1.82	1.99
9	CARROLL	4	47	SR	105	1		P	9	9.07	354.9	325.2	0.14	0.71	2.3	1.62
9	CARROLL	4	47	SR	124	1		P	0	1	206.04	175.4	0.22	1.61	1.96	1.85
9	CARROLL	4	47	SR	190	1		P	3	4	178.82	165.88	0.12	1.87	1.89	1.88
9	CARROLL	4	47	SR	364	1		P	3	3.28	142.77	110.92	0.16	2.28	1.86	1.98
12	CHESTER	4	48	SR	100	1		P	6	7	182.75	154.74	0.27	1.83	1.52	1.61
17	CROCKETT	4	48	SR	88	1		P	6	7	161.22	110.34	0.19	2.06	1.8	1.87
17	CROCKETT	4	48	SR	188	1		P	3	4	172.14	137.39	0.15	1.94	1.61	1.7

County #	COUNTY	Region	District	Route Type	Route Number	County Sequence	Special Case	Direction	Begin Log Mile	End Log Mile	IRI	HCIRI	Rut Depth	PSI	PDI	PQI
17	CROCKETT	4	48	SR	188	1		P	4	5	170.27	136.15	0.16	1.96	1.94	1.95
17	CROCKETT	4	48	SR	188	1		P	5	6	154.3	122.49	0.21	2.14	1.52	1.68
17	CROCKETT	4	48	SR	188	1		P	6	7	168.43	134.19	0.16	1.98	1.88	1.91
17	CROCKETT	4	48	SR	188	1		P	7	8	158.6	127	0.18	2.09	1.4	1.58
17	CROCKETT	4	48	SR	188	1		P	8	9	177.85	143.04	0.13	1.88	1.65	1.72
17	CROCKETT	4	48	SR	188	1		P	9	10	150.93	123.16	0.13	2.18	1.89	1.97
19	DAVIDSON	3	37	SR	6	1		P	13	14	69.05	54.53	0.23	3.42	1.54	1.96
23	DYER	4	47	SR	3	1		P	9	10	127.49	101.88	0.18	2.48	1.25	1.54
23	DYER	4	47	SR	78	1		P	12	13	102.2	82.35	0.25	2.85	1.47	1.79
23	DYER	4	47	SR	104	1		P	1	2	200.48	168.45	0.1	1.66	2.1	1.96
23	DYER	4	47	SR	104	1		P	2	3	203.79	166.11	0.11	1.63	2.03	1.9
23	DYER	4	47	SR	104	1		P	3	4	249.17	224.26	0.12	1.27	1.82	1.63
23	DYER	4	47	SR	104	1		P	4	5	236.72	199.48	0.14	1.36	1.73	1.61
23	DYER	4	47	SR	104	1		P	24	25	104.77	78.18	0.19	2.81	1.72	1.99
23	DYER	4	47	SR	181	1		P	0	1	223.82	191.95	0.27	1.46	1.82	1.7
23	DYER	4	47	SR	181	1		P	1	2	230.15	196.31	0.27	1.41	2.18	1.91
23	DYER	4	47	SR	181	1		P	2	3	223.82	188.13	0.29	1.46	2.05	1.85
23	DYER	4	47	SR	181	1		P	6	7	182.75	150.19	0.28	1.83	1.16	1.33
23	DYER	4	47	SR	181	1		P	9	10	201.58	168.39	0.24	1.65	2.02	1.9
23	DYER	4	47	SR	181	1		P	11	12	206.04	167.61	0.36	1.61	1.76	1.71
23	DYER	4	47	SR	181	1		P	12	13	158.6	127.69	0.42	2.09	1.65	1.77
23	DYER	4	47	SR	181	1		P	13	14	209.46	175.2	0.44	1.58	1.5	1.52
23	DYER	4	47	SR	181	1		P	14	15	211.77	174.23	0.32	1.56	1.97	1.84
23	DYER	4	47	SR	181	1		P	16	17	214.12	162.95	0.33	1.54	1.82	1.73
23	DYER	4	47	SR	181	1		P	17	18	182.75	142.64	0.18	1.83	2.07	1.99
23	DYER	4	47	SR	181	1		P	20	21	203.79	159.46	0.24	1.63	2.06	1.92
23	DYER	4	47	SR	210	1		P	4	5	156.86	122.83	0.28	2.11	1.69	1.81
24	FAYETTE	4	49	SR	57	1		P	18	19	93.48	73.75	0.26	2.99	1.66	1.98

County #	COUNTY	Region	District	Route Type	Route Number	County Sequence	Special Case	Direction	Begin Log Mile	End Log Mile	IRI	HCIRI	Rut Depth	PSI	PDI	PQI
24	FAYETTE	4	49	SR	196	1		P	14	15	115.43	95.14	0.23	2.65	1.61	1.87
24	FAYETTE	4	49	SR	196	1		P	15	16	115.43	91.47	0.25	2.65	1.51	1.79
27	GIBSON	4	47	SR	5	1		P	13	14	139.61	114.67	0.22	2.32	1.53	1.73
27	GIBSON	4	47	SR	5	1		P	14	15	134.97	107.53	0.19	2.38	1.74	1.91
27	GIBSON	4	47	SR	5	1		P	17.17	18.17	103.48	86	0.15	2.83	1.41	1.74
27	GIBSON	4	47	SR	43	1		P	5	6	83.43	69.75	0.14	3.16	1.44	1.82
27	GIBSON	4	47	SR	43	1		P	6	7	65.37	53.73	0.15	3.49	1.15	1.6
27	GIBSON	4	47	SR	54	1		P	16	17	165.69	140.56	0.11	2.01	1.75	1.82
27	GIBSON	4	47	SR	77	1		P	9	9.16	240.77	211.41	0.15	1.33	2.34	1.98
27	GIBSON	4	47	SR	77	1		P	11.16	12.16	147.62	113.72	0.31	2.22	1.79	1.91
27	GIBSON	4	47	SR	77	1		P	20.16	20.23	347.37	538.3	0.12	0.74	2.74	1.85
27	GIBSON	4	47	SR	152	3		P	7	8	116.12	93.75	0.14	2.64	1.75	1.98
27	GIBSON	4	47	SR	152	3		P	9	10	125.3	100.38	0.14	2.51	1.19	1.49
27	GIBSON	4	47	SR	152	3		P	10	11	143.57	119.71	0.13	2.27	1.78	1.91
27	GIBSON	4	47	SR	186	1		P	15	15.11	262.53	201.18	0.28	1.18	2.44	1.96
27	GIBSON	4	47	SR	367	1		P	2	3	156.86	131.41	0.15	2.11	1.79	1.88
35	HARDEMAN	4	48	SR	18	1		P	10	11	142.77	109.25	0.19	2.28	1.74	1.89
35	HARDEMAN	4	48	SR	18	1		P	11	12	154.3	114.17	0.16	2.14	1.78	1.88
35	HARDEMAN	4	48	SR	18	1		P	12	13	121.01	89.21	0.16	2.57	1.75	1.96
35	HARDEMAN	4	48	SR	100	1		P	5	6	124.58	92.5	0.24	2.52	1.7	1.91
35	HARDEMAN	4	48	SR	100	1		P	6	7	108.04	78.09	0.26	2.76	1.59	1.88
35	HARDEMAN	4	48	SR	179	1		P	7	7.1	240.77	198.4	0.16	1.33	2.18	1.88
36	HARDIN	4	48	SR	69	1		P	3	4	104.77	79.75	0.14	2.81	1.71	1.98
36	HARDIN	4	48	SR	69	1		P	15	16	129.7	102.01	0.17	2.45	1.64	1.85
36	HARDIN	4	48	SR	104	1		P	3	3.01	776.13	709.6	0.17	0.07	4.37	1.26
36	HARDIN	4	48	SR	128	1		P	23.22	24.22	216.5	183.68	0.17	1.52	2.23	1.99
36	HARDIN	4	48	SR	128	1		P	24.22	24.42	259.48	231.41	0.19	1.2	2.34	1.92
38	HAYWOOD	4	48	SR	54	1		P	10	11	105.42	89.66	0.25	2.8	1.69	1.97

County #	COUNTY	Region	District	Route Type	Route Number	County Sequence	Special Case	Direction	Begin Log Mile	End Log Mile	IRI	HCIRI	Rut Depth	PSI	PDI	PQI
38	HAYWOOD	4	48	SR	54	1		P	11	12	153.45	127.57	0.18	2.15	1.53	1.69
38	HAYWOOD	4	48	SR	54	1	SB	P	0	0.06	333.2	295	0.15	0.8	1.77	1.39
38	HAYWOOD	4	48	SR	76	1		P	0	1	104.77	79.34	0.2	2.81	1.36	1.69
38	HAYWOOD	4	48	SR	76	1		P	15	16	135.74	119.03	0.18	2.37	1.77	1.93
39	HENDERSON	4	48	SR	20	1		P	4	5	88.09	73.72	0.17	3.08	1.54	1.9
39	HENDERSON	4	48	SR	20	1		P	5	6	68.52	57.74	0.15	3.43	1.56	1.98
39	HENDERSON	4	48	SR	20	1		P	6	7	65.89	54.13	0.15	3.48	1.51	1.94
39	HENDERSON	4	48	SR	20	1		P	7	8	66.42	52.24	0.15	3.47	1.49	1.92
39	HENDERSON	4	48	SR	20	1		P	8	9	73.9	62.07	0.17	3.33	1.52	1.92
39	HENDERSON	4	48	SR	20	1		P	9	10	82.28	67.1	0.15	3.18	1.36	1.75
39	HENDERSON	4	48	SR	100	1		P	2	3	118.9	91.22	0.22	2.6	1.68	1.92
39	HENDERSON	4	48	SR	104	1		P	17	18	185.75	156.67	0.14	1.8	2.06	1.98
39	HENDERSON	4	48	SR	104	1		P	18	19	195.08	163.89	0.16	1.71	1.68	1.69
40	HENRY	4	47	SR	54	1		P	0	1	125.3	110.46	0.12	2.51	1.79	1.98
40	HENRY	4	47	SR	54	1		P	3	4	157.73	142.93	0.13	2.1	1.78	1.87
40	HENRY	4	47	SR	54	1		P	4	5	150.93	137.15	0.13	2.18	1.87	1.96
40	HENRY	4	47	SR	54	1		P	7	8	148.44	128.59	0.13	2.21	1.74	1.87
40	HENRY	4	47	SR	54	1		P	10	11	145.99	123.64	0.17	2.24	1.84	1.95
40	HENRY	4	47	SR	54	1		P	12	13	119.6	99.77	0.23	2.59	1.48	1.75
40	HENRY	4	47	SR	54	1		P	19	20	100.93	77.86	0.15	2.87	1.26	1.61
40	HENRY	4	47	SR	54	1		P	20	21	97.79	78.55	0.15	2.92	1.49	1.82
40	HENRY	4	47	SR	54	1		P	21	22	81.14	61.89	0.14	3.2	1.26	1.67
40	HENRY	4	47	SR	54	1		P	23	24	69.59	50.46	0.13	3.41	1.51	1.93
40	HENRY	4	47	SR	54	1		P	24	24.93	73.9	53.66	0.14	3.33	1.59	1.98
40	HENRY	4	47	SR	69	1	ALT	P	7	8	134.97	97.36	0.17	2.38	1.61	1.81
40	HENRY	4	47	SR	69	1	ALT	P	8	9	130.44	90.68	0.19	2.44	1.79	1.96
40	HENRY	4	47	SR	69	1	ALT	P	9	10	123.14	87.15	0.18	2.54	1.6	1.84
40	HENRY	4	47	SR	69	1	ALT	P	10	11	124.58	95.11	0.15	2.52	1.67	1.89



County #	COUNTY	Region	District	Route Type	Route Number	County Sequence	Special Case	Direction	Begin Log Mile	End Log Mile	IRI	HCIRI	Rut Depth	PSI	PDI	PQI
40	HENRY	4	47	SR	69	1	ALT	P	11	12	131.94	98.49	0.18	2.42	1.66	1.86
40	HENRY	4	47	SR	69	1	ALT	P	12	12.54	125.3	104.71	0.16	2.51	1.74	1.94
40	HENRY	4	47	SR	77	1		P	10	10.35	141.19	113.54	0.14	2.3	1.54	1.74
40	HENRY	4	47	SR	114	1		P	6	6.03	429.9	359.9	0.19	0.47	2.09	1.34
40	HENRY	4	47	SR	140	1		P	18	19	132.69	110.27	0.09	2.41	1.43	1.67
40	HENRY	4	47	SR	140	1		P	19	20	162.11	144.22	0.09	2.05	1.76	1.84
40	HENRY	4	47	SR	218	1		P	17	18	154.3	119.02	0.12	2.14	1.87	1.95
40	HENRY	4	47	SR	356	1		P	0	0.95	201.58	167.65	0.18	1.65	1.76	1.73
47	KNOX	1	18	SR	1	1		P	22	23	146.81	127.3	0.17	2.23	1.86	1.96
47	KNOX	1	18	SR	1	1		P	23	24	130.44	110.19	0.2	2.44	1.77	1.95
48	LAKE	4	47	SR	22	1		P	7	8	191.92	151.43	0.09	1.74	2.09	1.98
48	LAKE	4	47	SR	22	1		P	9	10	207.17	165.54	0.09	1.6	2.17	1.98
48	LAKE	4	47	SR	78	1		P	12	13	204.91	172.58	0.16	1.62	1.47	1.51
48	LAKE	4	47	SR	78	1		P	13	14	212.94	178.57	0.16	1.55	1.76	1.69
48	LAKE	4	47	SR	78	1		P	14	15	174.97	142.19	0.13	1.91	1.58	1.67
48	LAKE	4	47	SR	78	1		P	15	16	189.84	157	0.12	1.76	1.95	1.89
49	LAUDERDALE	4	49	SR	19	1		P	7	8	200.48	167.92	0.12	1.66	2.06	1.93
49	LAUDERDALE	4	49	SR	19	1		P	9	10	206.04	176.95	0.16	1.61	1.83	1.76
49	LAUDERDALE	4	49	SR	19	1		P	10	11	203.79	182.7	0.18	1.63	1.6	1.61
49	LAUDERDALE	4	49	SR	19	1		P	12	13	174.02	144.88	0.17	1.92	1.71	1.77
49	LAUDERDALE	4	49	SR	19	1		P	24	25	172.14	147.94	0.2	1.94	1.63	1.72
55	MCNAIRY	4	48	SR	15	1		P	11	12	134.21	122.57	0.16	2.39	1.81	1.97
55	MCNAIRY	4	48	SR	199	1		P	3	4	163	137.4	0.14	2.04	1.83	1.89
57	MADISON	4	48	SR	1	1		P	8	9	152.61	126.94	0.21	2.16	1.92	1.99
57	MADISON	4	48	SR	1	1		P	28	29	142.77	116.27	0.26	2.28	1.76	1.9
57	MADISON	4	48	SR	1	1		P	30	31	157.73	116.88	0.29	2.1	1.87	1.94
57	MADISON	4	48	SR	18	1		P	5	6	106.72	84.55	0.17	2.78	1.49	1.8
57	MADISON	4	48	SR	18	1		P	6	7	121.71	99.15	0.2	2.56	1.39	1.67

County #	COUNTY	Region	District	Route Type	Route Number	County Sequence	Special Case	Direction	Begin Log Mile	End Log Mile	IRI	HCIRI	Rut Depth	PSI	PDI	PQI
57	MADISON	4	48	SR	18	1		P	7	8	101.57	77.86	0.16	2.86	1.3	1.65
57	MADISON	4	48	SR	18	1		P	8	9	91.07	71.8	0.19	3.03	1.41	1.77
57	MADISON	4	48	SR	18	1		P	9	9.83	116.81	102.27	0.18	2.63	1.56	1.82
57	MADISON	4	48	SR	186	1		P	0	1	185.75	170.6	0.17	1.8	1.8	1.8
57	MADISON	4	48	SR	223	1		P	14	15	123.86	104.98	0.24	2.53	1.62	1.85
63	MONTGOMERY	3	38	SR	13	1		P	20	21	177.85	154.78	0.3	1.88	1.77	1.8
63	MONTGOMERY	3	38	SR	112	1		P	15	15.03	379.54	371.3	0.18	0.62	3.12	1.92
64	MOORE	3	39	SR	129	1		P	0	0.05	711.28	686.8	0.07	0.1	3.21	1.13
66	OBION	4	47	SR	3	1		P	10	11	89.28	74.05	0.24	3.06	1.4	1.77
66	OBION	4	47	SR	3	1		P	11	12	86.33	68.77	0.23	3.11	1.52	1.88
66	OBION	4	47	SR	3	1		P	14	15	65.89	48.42	0.25	3.48	1.57	1.99
66	OBION	4	47	SR	3	1	SRC	P	0	0.02	437.81	374	0.11	0.45	3.48	1.88
66	OBION	4	47	SR	21	1		P	25	26	153.45	108.66	0.18	2.15	1.6	1.75
66	OBION	4	47	SR	22	1		P	6	7	137.28	111.31	0.38	2.35	1.67	1.85
66	OBION	4	47	SR	22	1		P	10	11	120.3	95.51	0.35	2.58	1.58	1.83
66	OBION	4	47	SR	22	1		P	11	12	119.6	93.06	0.33	2.59	1.5	1.77
66	OBION	4	47	SR	78	1		P	0	1	106.07	98.43	0.17	2.79	1.71	1.98
66	OBION	4	47	SR	78	1		P	1	1.01	354.9	339	0.09	0.71	3.02	1.96
66	OBION	4	47	SR	183	1		P	10	11	168.43	115.67	0.2	1.98	1.88	1.91
66	OBION	4	47	SR	183	1		P	11	12	183.75	131.48	0.19	1.82	1.95	1.91
66	OBION	4	47	SR	183	1		P	12	13	198.3	137.58	0.18	1.68	1.94	1.86
66	OBION	4	47	SR	183	1		P	13	14	202.68	136.99	0.17	1.64	2.1	1.95
66	OBION	4	47	SR	184	1		P	1	2	198.3	153.52	0.14	1.68	1.71	1.7
66	OBION	4	47	SR	184	1		P	2	3	200.48	157.66	0.13	1.66	1.63	1.64
66	OBION	4	47	SR	184	1		P	3	4	238.06	200.62	0.15	1.35	1.9	1.71
66	OBION	4	47	SR	184	1		P	4	5	189.84	152.69	0.14	1.76	1.89	1.85
66	OBION	4	47	SR	184	1		P	5	6	195.08	152.17	0.14	1.71	1.87	1.82
66	OBION	4	47	SR	184	1		P	6	7	243.53	196.76	0.16	1.31	1.89	1.69

County #	COUNTY	Region	District	Route Type	Route Number	County Sequence	Special Case	Direction	Begin Log Mile	End Log Mile	IRI	HCIRI	Rut Depth	PSI	PDI	PQI
66	OBION	4	47	SR	214	1		P	1	2	170.27	140.32	0.29	1.96	1.74	1.8
66	OBION	4	47	SR	214	1		P	3	4	195.08	160.54	0.21	1.71	2.05	1.94
66	OBION	4	47	SR	214	1		P	4	5	150.93	129.49	0.14	2.18	1.29	1.51
66	OBION	4	47	SR	214	1		P	5	6	179.79	158.85	0.13	1.86	1.93	1.91
66	OBION	4	47	SR	216	1		P	1	2	214.12	183.63	0.1	1.54	2.22	1.99
74	ROBERTSON	3	38	SR	65	1		P	0	1	126.76	109.33	0.18	2.49	1.68	1.89
75	RUTHERFORD	3	39	SR	452	1		P	0	0.91	150.1	125.17	0.36	2.19	1.91	1.99
79	SHELBY	4	49	SR	1	1		P	10	11	244.92	216.25	0.21	1.3	2.3	1.94
79	SHELBY	4	49	SR	1	1		P	11	12	200.48	171.59	0.17	1.66	2.12	1.97
79	SHELBY	4	49	SR	3	1		P	7	8	301.95	270.95	0.5	0.95	2.52	1.88
79	SHELBY	4	49	SR	3	1		P	9	10	276.96	238.72	0.32	1.09	2.44	1.92
79	SHELBY	4	49	SR	3	1		P	11	12	320.05	318.61	0.2	0.86	1.87	1.48
79	SHELBY	4	49	SR	3	1	SB	P	0	1	228.87	213.11	0.14	1.42	2.26	1.97
79	SHELBY	4	49	SR	4	1		P	0	1	131.19	110.61	0.34	2.43	1.39	1.64
79	SHELBY	4	49	SR	4	1		P	1	2	223.82	192.55	0.48	1.46	1.16	1.24
79	SHELBY	4	49	SR	4	1		P	2	3	257.97	241.07	0.65	1.21	1.2	1.2
79	SHELBY	4	49	SR	14	1		P	10	11	301.95	273.77	0.2	0.95	2.59	1.92
79	SHELBY	4	49	SR	15	1		P	16	16.3	98.42	83.27	0.2	2.91	1.22	1.58
79	SHELBY	4	49	SR	23	1		P	3	4	223.82	180.63	0.25	1.46	2.08	1.87
79	SHELBY	4	49	SR	23	1		P	4	5	210.61	177.8	0.23	1.57	2.16	1.96
79	SHELBY	4	49	SR	57	1		P	6	7	252.05	232.2	0.25	1.25	2.41	1.98
79	SHELBY	4	49	SR	57	1		P	7	8	278.63	243.99	0.26	1.08	2.47	1.93
79	SHELBY	4	49	SR	57	1		P	19	20	273.65	256.22	0.27	1.11	2.24	1.81
79	SHELBY	4	49	SR	175	1		P	18	19	210.61	164.45	0.43	1.57	2.1	1.92
84	TIPTON	4	49	SR	54	1	SB	P	0	0.25	537.55	538.26	0.19	0.26	1.82	1.02
84	TIPTON	4	49	SR	59	1		P	14	15	180.77	148.95	0.23	1.85	2.02	1.97
91	WAYNE	3	39	SR	69	1		P	3	3.71	113.39	87.15	0.14	2.68	1.56	1.83
92	WEAKLEY	4	47	SR	22	1	SRC	P	0	0.5	190.88	145.5	0.14	1.75	1.96	1.89

County #	COUNTY	Region	District	Route Type	Route Number	County Sequence	Special Case	Direction	Begin Log Mile	End Log Mile	IRI	HCIRI	Rut Depth	PSI	PDI	PQI
92	WEAKLEY	4	47	SR	54	1		P	7	8	137.28	109.35	0.17	2.35	1.12	1.4
92	WEAKLEY	4	47	SR	54	1		P	8	9	148.44	128.1	0.17	2.21	1.56	1.73
92	WEAKLEY	4	47	SR	54	1		P	9	10	125.3	101.99	0.16	2.51	1.79	1.98
92	WEAKLEY	4	47	SR	54	1		P	13	14	133.45	107.38	0.2	2.4	0.78	1.09
92	WEAKLEY	4	47	SR	54	1		P	15	16	138.05	116.72	0.19	2.34	1.43	1.66
92	WEAKLEY	4	47	SR	54	1		P	16	17	143.57	119.04	0.19	2.27	1.33	1.56
92	WEAKLEY	4	47	SR	54	1		P	17	18	141.98	116.51	0.19	2.29	1.31	1.55
92	WEAKLEY	4	47	SR	54	1		P	20	21	138.05	106.04	0.18	2.34	1.82	1.96
92	WEAKLEY	4	47	SR	54	1		P	22	22.14	151.77	111.74	0.2	2.17	1.31	1.52
92	WEAKLEY	4	47	SR	89	1		P	8	9	211.77	184.57	0.2	1.56	2.14	1.95
92	WEAKLEY	4	47	SR	190	1		P	15	16	161.22	140.7	0.13	2.06	1.82	1.89
92	WEAKLEY	4	47	SR	190	1		P	16	17	136.5	101.51	0.14	2.36	1.8	1.95
92	WEAKLEY	4	47	SR	372	1		P	0	1	183.75	154.83	0.24	1.82	1.17	1.34
92	WEAKLEY	4	47	SR	372	1		P	1	2	179.79	146.44	0.3	1.86	1.69	1.74
33	HAMILTON	2	29	OA	346	1		P	0	0.271	376.63	346.51	0.09	0.63	1.19	0.98
33	HAMILTON	2	29	OA	655	1		P	0	0.32	256.47	204.97	0.21	1.22	1.59	1.47
79	SHELBY	4	49	OF	392	1		P	0	0.508	146.81	115.84	0.2	2.23	1.84	1.95
79	SHELBY	4	49	0	804	1		P	0	1	247.74	216.7	0.29	1.28	1.75	1.59
79	SHELBY	4	49	0	804	1		P	2	3	181.76	160.73	0.4	1.84	1.2	1.36
79	SHELBY	4	49	0	804	1		P	3	4	194.02	173.48	0.42	1.72	1.18	1.32
79	SHELBY	4	49	0	804	1		P	4	4.09	511.53	431.5	0.52	0.3	2.29	1.24
79	SHELBY	4	49	0	2803	1		P	1	2	256.47	225.94	0.38	1.22	2.13	1.8
79	SHELBY	4	49	0	2813	1		P	3	4	301.95	267.95	0.39	0.95	2.07	1.64
79	SHELBY	4	49	0	2824	1		P	4.95	5.04	483.5	539.89	0.32	0.35	2.46	1.37
79	SHELBY	4	49	0	2830	1		P	10	10.3	256.47	274.57	0.2	1.22	1.91	1.67
79	SHELBY	4	49	0	2841	1		P	2	3	223.82	179.19	0.31	1.46	1.17	1.25
79	SHELBY	4	49	0	2841	1		P	3	4	186.77	152.73	0.42	1.79	1.72	1.74
79	SHELBY	4	49	0	2841	1		P	4	4.1	246.33	204.1	0.34	1.29	2.17	1.86

County #	COUNTY	Region	District	Route Type	Route Number	County Sequence	Special Case	Direction	Begin Log Mile	End Log Mile	IRI	HCIRI	Rut Depth	PSI	PDI	PQI
19	DAVIDSON	3	37	0	3241	1		P	0	0.39	268.8	239.35	0.2	1.14	2.4	1.92
33	HAMILTON	2	29	0	3570	1		P	0	0.69	280.32	249.54	0.25	1.07	2.44	1.91
33	HAMILTON	2	29	0	3620	1		P	0	0.76	313.81	268.59	0.27	0.89	1.57	1.32
79	SHELBY	4	49	0	4385	1		P	2	3	162.11	138.09	0.37	2.05	1.46	1.62
33	HAMILTON	2	29	0	4418	1		P	0	0.39	365.44	290.87	0.31	0.67	1.84	1.36
79	SHELBY	4	49	0	4471	1		P	0	0.28	337.8	363.21	0.15	0.78	2.55	1.79
79	SHELBY	4	49	0	5092	1		P	1	1.03	454.73	386.2	0.11	0.41	3.21	1.73
79	SHELBY	4	49	0	5185	1		P	0.38	0.75	307.79	256.4	0.12	0.92	2.77	1.99
79	SHELBY	4	49	0	5346	1		P	2	2.02	488.77	479	0.2	0.34	3.72	1.81
33	HAMILTON	2	29	0	5404	1		P	1	2	254.99	242.09	0.22	1.23	2.02	1.74
33	HAMILTON	2	29	0	5404	1		P	2	2.84	254.99	217.23	0.25	1.23	1.87	1.65
33	HAMILTON	2	29	0	5405	1		P	0	0.2	207.17	172.7	0.18	1.6	2.04	1.9

## Appendix II: List of segments in poor condition (Project segment)

County #	COUNTY	Region	District	Route Type	Route Number	County Sequence	Special Case	Direction	From Log Mile	To Log Mile	IRI	HCIRI	Rut Depth	PSI	PDI	Year	PQI	NHS
47	KNOX	1	18	I	140	1		M	0	0.56	147.62	136.25	0.21	2.22	1.76	2019	1.89	1
79	SHELBY	4	49	I	40	1		P	5.16	7.29	169.35	156.81	0.11	1.97	1.48	2019	1.61	1
79	SHELBY	4	49	I	40	1		M	7.29	7.5	199.38	184.4	0.12	1.67	1.87	2019	1.81	1
79	SHELBY	4	49	I	40	1		P	7.29	7.5	330.94	290.96	0.14	0.81	0.01	2019	0.04	1
79	SHELBY	4	49	I	40	1		M	7.5	7.53	194.02	161.6	0.12	1.72	1.37	2019	1.47	1
1	ANDERSON	1	18	SR	71	4		P	0.76	1.21	161.22	140.94	0.16	2.06	1.17	2018	1.39	0
2	BEDFORD	3	39	SR	269	1		P	3.95	4.45	382.5	335.06	0.19	0.61	2.92	2019	1.83	0
3	BENTON	4	47	SR	1	1		P	8.54	12.65	113.39	89.1	0.2	2.68	1.74	2019	1.98	0
3	BENTON	4	47	SR	191	1	SB	P	0	0.06	388.56	366.4	0.17	0.59	1.76	2019	1.27	0
3	BENTON	4	47	SR	191	1		P	15.17	15.37	226.33	233.3	0.16	1.44	2.28	2019	1.99	0
4	BLEDSON	2	28	SR	28	1		P	13.64	13.82	133.45	116.21	0.2	2.4	1.76	2019	1.93	1
4	BLEDSON	2	28	SR	28	1		P	15.34	15.36	152.61	134.3	0.22	2.16	1.69	2019	1.82	1
9	CARROLL	4	47	SR	1	1		P	9.55	13.27	117.5	99.6	0.17	2.62	1.7	2019	1.94	0
9	CARROLL	4	47	SR	22	1	BYP	P	0	3.59	131.94	99.04	0.2	2.42	1.5	2019	1.73	1
9	CARROLL	4	47	SR	77	1		P	13.7	13.9	163	127.85	0.15	2.04	1.66	2019	1.77	0
9	CARROLL	4	47	SR	105	1		P	5.48	5.49	505.57	481.9	0.17	0.31	2.89	2019	1.48	0
9	CARROLL	4	47	SR	124	1		P	1.4	1.43	276.96	220.2	0.21	1.09	1.61	2019	1.43	0
11	CHEATHAM	3	38	SR	249	1		P	16.5	16.52	604.41	595.6	0.07	0.18	4.38	2019	1.68	0
12	CHESTER	4	48	SR	22	1		P	7.81	7.82	398.05	333.3	0.28	0.56	2.05	2019	1.39	0
12	CHESTER	4	48	SR	197	1		P	2.21	2.22	537.55	539.8	0.13	0.26	3.37	2019	1.56	0
18	CUMBERLAND	2	27	SR	24	1		P	16.78	16.79	253.51	225.4	0.19	1.24	2.1	2019	1.79	1
19	DAVIDSON	3	37	SR	6	1		P	8.44	8.66	347.37	297.2	0.16	0.74	2.88	2019	1.92	1
19	DAVIDSON	3	37	SR	6	1		P	18.57	18.59	426.07	352.7	0.17	0.48	3.24	2019	1.83	1
19	DAVIDSON	3	37	SR	100	1		P	12.08	12.17	169.35	157.77	0.33	1.97	1.73	2019	1.8	1
23	DYER	4	47	SR	104	1		P	0	4.89	212.94	182.61	0.12	1.55	1.99	2019	1.85	0

County #	COUNTY	Region	District	Route Type	Route Number	County Sequence	Special Case	Direction	From Log Mile	To Log Mile	IRI	HCIRI	Rut Depth	PSI	PDI	Year	PQI	NHS
23	DYER	4	47	SR	181	1		P	0	21.91	188.81	154.9	0.28	1.77	2.05	2019	1.96	0
24	FAYETTE	4	49	SR	76	1		P	6.9	6.91	159.47	132.9	0.4	2.08	1.9	2019	1.95	0
27	GIBSON	4	47	SR	43	1		P	4.82	6.88	81.14	68.56	0.15	3.2	1.27	2019	1.68	1
27	GIBSON	4	47	SR	76	1		P	1.06	1.08	370.95	344.4	0.1	0.65	2.99	2019	1.89	0
27	GIBSON	4	47	SR	77	1		P	9	9.16	240.77	211.41	0.15	1.33	2.34	2019	1.98	0
33	HAMILTON	2	29	SR	8	1		P	8.33	8.5	365.44	393.74	0.18	0.67	2.85	2019	1.85	1
33	HAMILTON	2	29	SR	8	1		P	8.5	8.83	404.66	353.28	0.22	0.54	2.73	2019	1.68	1
35	HARDEMAN	4	48	SR	15	1		P	13.8	13.86	262.53	234.6	0.19	1.18	2.08	2019	1.75	1
35	HARDEMAN	4	48	SR	18	1		P	9.02	17.37	135.74	103.47	0.18	2.37	1.85	2019	1.99	0
35	HARDEMAN	4	48	SR	18	1		P	17.37	17.39	216.5	210.8	0.18	1.52	1.7	2019	1.64	1
35	HARDEMAN	4	48	SR	125	1		P	19.69	19.72	301.95	301.6	0.17	0.95	2.43	2019	1.83	1
36	HARDIN	4	48	SR	15	1		P	6.29	6.95	117.5	112.27	0.15	2.62	1.57	2019	1.83	1
36	HARDIN	4	48	SR	69	1		P	17.94	18	138.05	110.2	0.23	2.34	1.7	2019	1.87	0
38	HAYWOOD	4	48	SR	54	1	SB	P	0	0.06	333.2	295	0.15	0.8	1.77	2019	1.39	0
38	HAYWOOD	4	48	SR	54	1		P	8.62	8.68	190.88	151.2	0.24	1.75	1.75	2019	1.75	0
38	HAYWOOD	4	48	SR	54	1		P	8.68	12.64	126.03	107.46	0.21	2.5	1.79	2019	1.98	0
39	HENDERSON	4	48	SR	20	1		P	4.33	10.9	75.55	62.72	0.15	3.3	1.5	2019	1.9	1
39	HENDERSON	4	48	SR	22	1		P	9.06	9.15	180.77	151.7	0.2	1.85	1.52	2019	1.61	1
39	HENDERSON	4	48	SR	22	1	ALT	P	10.55	10.57	282.03	239.5	0.18	1.06	1.83	2019	1.55	0
39	HENDERSON	4	48	SR	100	1		P	10.57	10.58	144.38	119.6	0.19	2.26	0.61	2019	0.9	0
39	HENDERSON	4	48	SR	104	1		P	17.6	18.8	214.12	179.28	0.17	1.54	1.47	2019	1.49	0
40	HENRY	4	47	SR	69	1	ALT	P	6.21	12.54	128.22	95.13	0.17	2.47	1.68	2019	1.89	0
40	HENRY	4	47	SR	69	1		P	22.95	23.05	216.5	166.6	0.14	1.52	1.65	2019	1.61	0
40	HENRY	4	47	SR	76	1		P	13.09	13.29	90.47	76.75	0.11	3.04	1.51	2019	1.86	1
40	HENRY	4	47	SR	356	1		P	0	0.95	201.58	167.65	0.18	1.65	1.76	2019	1.73	1
41	HICKMAN	3	38	SR	50	1		P	17.68	17.69	524.07	515.3	0.09	0.28	3.95	2019	1.79	0
46	JOHNSON	1	17	SR	167	1		P	13.94	13.95	317.95	294.9	0.14	0.87	2.79	2018	1.97	0

County #	COUNTY	Region	District	Route Type	Route Number	County Sequence	Special Case	Direction	From Log Mile	To Log Mile	IRI	HCIRI	Rut Depth	PSI	PDI	Year	PQI	NHS
47	KNOX	1	18	SR	131	1		P	11.98	12	182.75	166	0.11	1.83	2.01	2018	1.95	0
48	LAKE	4	47	SR	78	1		P	10.64	15.59	178.82	151.15	0.14	1.87	1.89	2019	1.88	0
48	LAKE	4	47	SR	78	1		P	21.25	21.285	200.48	155.2	0.12	1.66	2.07	2019	1.94	0
48	LAKE	4	47	SR	212	1		P	2.42	2.43	804.15	679	0.16	0.06	2.82	2019	0.89	0
49	LAUDERDALE	4	49	SR	19	1		P	7.95	8	212.94	158.1	0.15	1.55	2.22	2019	1.99	0
49	LAUDERDALE	4	49	SR	19	1		P	8	12.4	184.75	155.98	0.16	1.81	1.87	2019	1.85	0
55	MCNAIRY	4	48	SR	15	1		P	11.56	12.3	131.19	113.19	0.18	2.43	1.42	2019	1.67	0
55	MCNAIRY	4	48	SR	57	1		P	14.4	14.64	250.6	222.89	0.18	1.26	2.28	2019	1.91	0
55	MCNAIRY	4	48	SR	57	1		P	19.79	19.8	71.73	53.3	0.29	3.37	0.9	2019	1.34	0
55	MCNAIRY	4	48	SR	69	1		P	0	0.26	131.94	112.2	0.19	2.42	1.37	2019	1.62	0
57	MADISON	4	48	SR	1	1		P	15.48	15.51	259.48	234.8	0.15	1.2	2.14	2019	1.8	1
57	MADISON	4	48	SR	18	1		P	4.7	9.62	105.42	83.85	0.18	2.8	1.42	2019	1.74	0
57	MADISON	4	48	SR	18	1		P	9.81	9.83	429.9	389.5	0.17	0.47	2.96	2019	1.7	1
57	MADISON	4	48	SR	20	1		P	9.39	9.42	301.95	312.1	0.27	0.95	0.97	2019	0.96	1
57	MADISON	4	48	SR	20	1		P	9.42	9.72	303.88	267.52	0.35	0.94	1.6	2019	1.36	1
57	MADISON	4	48	SR	223	1		P	11.4	12.63	192.97	157.76	0.28	1.73	2.08	2019	1.97	0
57	MADISON	4	48	SR	223	1		P	14.42	15.07	118.2	100.96	0.22	2.61	1.3	2019	1.6	0
58	MARION	2	28	SR	56	1		P	0	0.01	483.5	447.3	0.1	0.35	2.87	2018	1.53	0
60	MAURY	3	38	SR	99	1		P	16.4	16.82	234.06	196.08	0.22	1.38	2.24	2019	1.94	1
63	MONTGOMERY	3	38	SR	112	1		P	15	15.03	379.54	371.3	0.18	0.62	3.12	2019	1.92	0
64	MOORE	3	39	SR	129	1		P	0	0.05	711.28	686.8	0.07	0.1	3.21	2019	1.13	0
66	OBION	4	47	SR	3	1	SRC	P	0	0.02	437.81	374	0.11	0.45	3.48	2019	1.88	0
66	OBION	4	47	SR	5	1		P	16.93	17	337.8	311.4	0.15	0.78	2.11	2019	1.57	1
66	OBION	4	47	SR	21	1		P	22.3	22.36	349.85	325.3	0.13	0.73	2.52	2019	1.74	0
66	OBION	4	47	SR	21	1		P	26.32	26.34	225.07	205.4	0.31	1.45	1.41	2019	1.42	0
66	OBION	4	47	SR	78	1		P	0	0.99	106.07	98.49	0.17	2.79	1.71	2019	1.98	0
66	OBION	4	47	SR	183	1		P	9.37	14.17	183.75	130.31	0.19	1.82	1.98	2019	1.93	0



County #	COUNTY	Region	District	Route Type	Route Number	County Sequence	Special Case	Direction	From Log Mile	To Log Mile	IRI	HCIRI	Rut Depth	PSI	PDI	Year	PQI	NHS
66	OBION	4	47	SR	184	1		P	0.17	6.08	202.68	163.35	0.14	1.64	1.82	2019	1.76	0
66	OBION	4	47	SR	184	1		P	6.08	6.11	239.41	178.47	0.13	1.34	1.62	2019	1.53	0
66	OBION	4	47	SR	184	1		P	8.83	8.86	326.5	302.9	0.13	0.83	2.77	2019	1.93	0
67	OVERTON	2	27	SR	292	1		P	3.4	3.41	454.73	379.5	0.17	0.41	3.62	2018	1.88	0
70	POLK	2	29	SR	68	1		P	4.83	4.92	116.81	95.63	0.1	2.63	1.55	2018	1.82	0
70	POLK	2	29	SR	163	1		P	0.92	0.93	499.79	496.1	0.11	0.32	3.29	2018	1.64	0
71	PUTNAM	2	27	SR	135	1		P	8.39	8.53	175.92	145.66	0.17	1.9	1.19	2019	1.37	1
73	ROANE	1	19	SR	327	1		P	5.71	5.73	463.83	436.5	0.16	0.39	3.45	2018	1.79	0
73	ROANE	1	19	SR	330	1		P	0	0.38	168.43	157.69	0.11	1.98	1.91	2018	1.93	0
75	RUTHERFORD	3	39	SR	452	1		P	0	0.91	150.1	125.17	0.36	2.19	1.91	2019	1.99	0
76	SCOTT	1	19	SR	29	1		P	12.71	12.74	105.42	88.5	0.14	2.8	1.64	2019	1.93	1
79	SHELBY	4	49	SR	1	1		P	9.34	12.04	228.87	200.96	0.2	1.42	2.3	2019	1.99	1
79	SHELBY	4	49	SR	1	1		P	19.93	20.04	158.6	133.59	0.31	2.09	1.27	2019	1.47	1
79	SHELBY	4	49	SR	3	1		P	9	9.9	292.63	248.82	0.33	1	2.43	2019	1.86	0
79	SHELBY	4	49	SR	3	1		P	10.77	11.46	382.5	353.2	0.22	0.61	1.88	2019	1.34	1
79	SHELBY	4	49	SR	3	1		P	11.46	11.66	326.5	290.23	0.25	0.83	1.64	2019	1.34	0
79	SHELBY	4	49	SR	4	1		P	0	2.1	177.85	159	0.41	1.88	1.33	2019	1.48	1
79	SHELBY	4	49	SR	4	1		P	7.05	7.37	201.58	178.13	0.31	1.65	1.36	2019	1.44	1
79	SHELBY	4	49	SR	15	1		P	0	0.11	294.45	259.12	0.27	0.99	2.35	2019	1.81	0
79	SHELBY	4	49	SR	15	1		P	16.12	16.18	91.67	75.3	0.21	3.02	1.45	2019	1.81	1
79	SHELBY	4	49	SR	15	1		P	16.18	16.3	86.33	69.72	0.19	3.11	0.68	2019	1.07	1
79	SHELBY	4	49	SR	57	1		P	1.21	1.22	352.35	249.9	0.31	0.72	2.65	2019	1.79	1
79	SHELBY	4	49	SR	57	1		P	4.58	4.7	267.21	256.48	0.22	1.15	2.42	2019	1.94	1
82	SULLIVAN	1	17	SR	137	1		P	0	0.02	107.38	93.2	0.1	2.77	1.44	2019	1.75	1
83	SUMNER	3	37	SR	6	1		P	14.88	14.9	92.88	72.7	0.15	3	0.63	2019	1.01	1
83	SUMNER	3	37	SR	11	1		P	1.35	1.36	398.05	297.3	0.25	0.56	2.6	2019	1.64	1
84	TIPTON	4	49	SR	54	1		P	0	0.2	415.05	285.7	0.13	0.51	3.01	2019	1.77	1

County #	COUNTY	Region	District	Route Type	Route Number	County Sequence	Special Case	Direction	From Log Mile	To Log Mile	IRI	HCIRI	Rut Depth	PSI	PDI	Year	PQI	NHS
84	TIPTON	4	49	SR	54	1	SB	P	0	0.25	537.55	538.26	0.19	0.26	1.82	2019	1.02	1
92	WEAKLEY	4	47	SR	22	1	SRC	P	0	0.5	190.88	145.5	0.14	1.75	1.96	2019	1.89	0
92	WEAKLEY	4	47	SR	54	1		P	21.77	22.14	132.69	99.96	0.21	2.41	1.65	2019	1.85	0
92	WEAKLEY	4	47	SR	372	1		P	0	1.91	182.75	151.19	0.28	1.83	1.29	2019	1.43	0
92	WEAKLEY	4	47	SR	431	1		P	2.87	2.96	275.3	247.3	0.21	1.1	2.34	2019	1.87	0
92	WEAKLEY	4	47	SR	431	1		P	5.26	5.37	218.9	184.38	0.18	1.5	1.81	2019	1.71	0
94	WILLIAMSON	3	37	SR	246	1		P	12.97	13.5	173.08	146.11	0.13	1.93	2.01	2019	1.99	0