

Includes All Responders

Reporting Period: January 1, 2020 to December 31, 2020

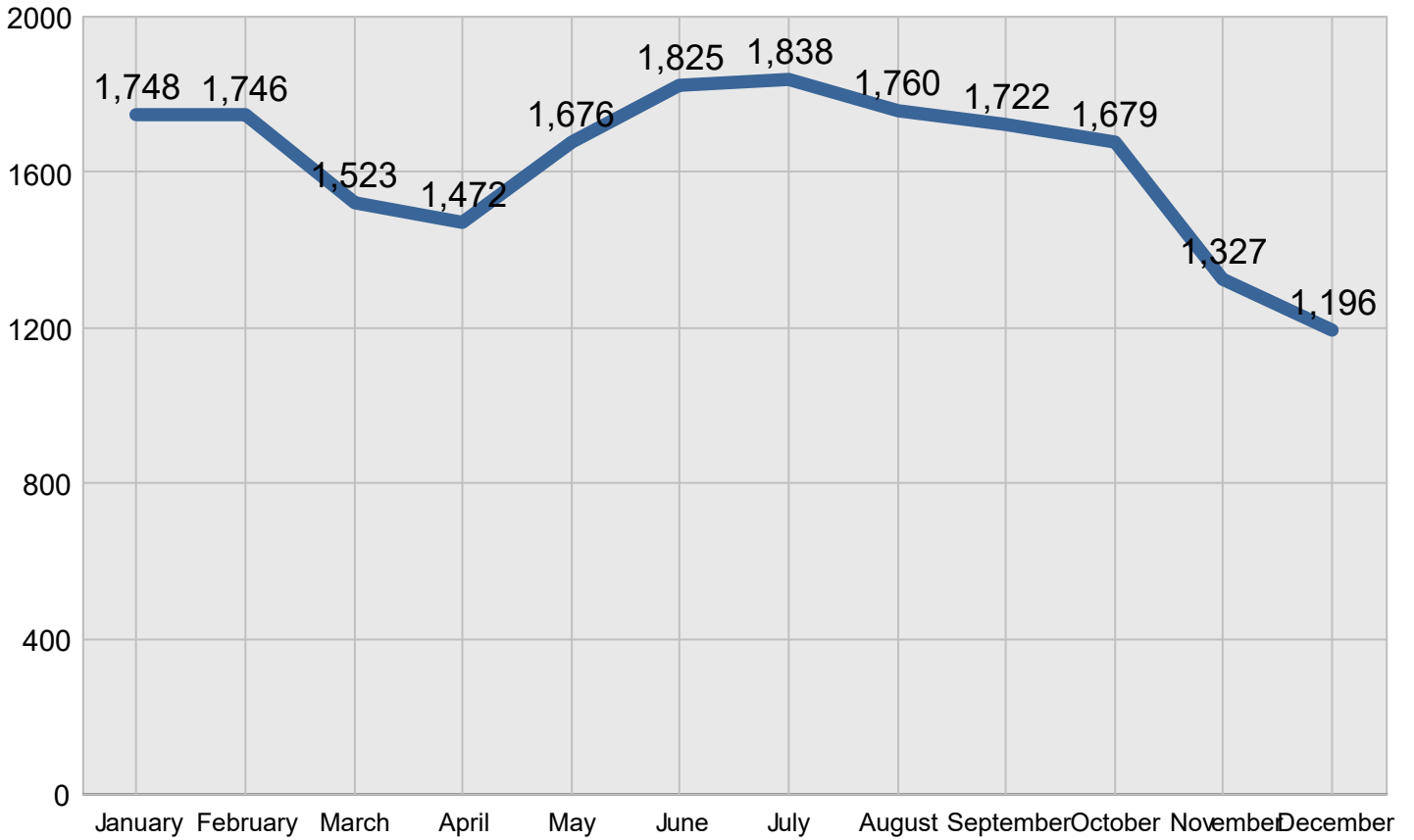
Region 2

Created on: June 15, 2022 3:32 pm County: All Counties Report Template version 2.0

Total Incidents Managed This Year 19,512

Incidents Managed

Incidents Managed - Monthly



Performance Measures Summary

Incidents Overall Response

	January	February	March	April	May	June	July	August	September	October	November	December	Total
Events included	307	340	304	305	351	387	379	384	367	340	275	235	3,974
Notification Duration (min.)*	0.0	0.0	0.0	0.0	0.0	0.0	0.0	0.0	0.0	0.0	0.0	0.0	0.0
Verification Duration (min.)	0.0	0.0	0.0	0.0	0.0	0.0	0.0	0.0	0.0	0.0	0.0	0.0	0.0
Response Duration (min.)	8.7	7.8	6.8	6.9	6.8	8.1	6.3	11.2	6.5	8.2	7.9	6.1	7.7
Open Roads Duration (min.)	32.6	17.8	21.6	12.7	28.7	13.6	14.3	15.8	14.2	29.0	30.3	29.5	21.1
Departure Duration (min.)	19.1	16.7	14.9	7.6	12.5	12.0	10.4	12.4	28.5	25.2	55.5	31.8	19.9
Roadway Clearance Duration (min.)	41.3	25.6	28.4	19.6	35.5	21.7	20.6	27.0	20.7	37.2	38.3	35.5	28.8
Incident Clearance Duration (min.)	60.4	42.2	43.2	27.1	47.9	33.7	31.0	39.4	49.2	62.3	93.8	67.4	48.7

* THP data is not available for Notification Duration

Note:

Response Duration (min.): [First Notification to First Arrival]

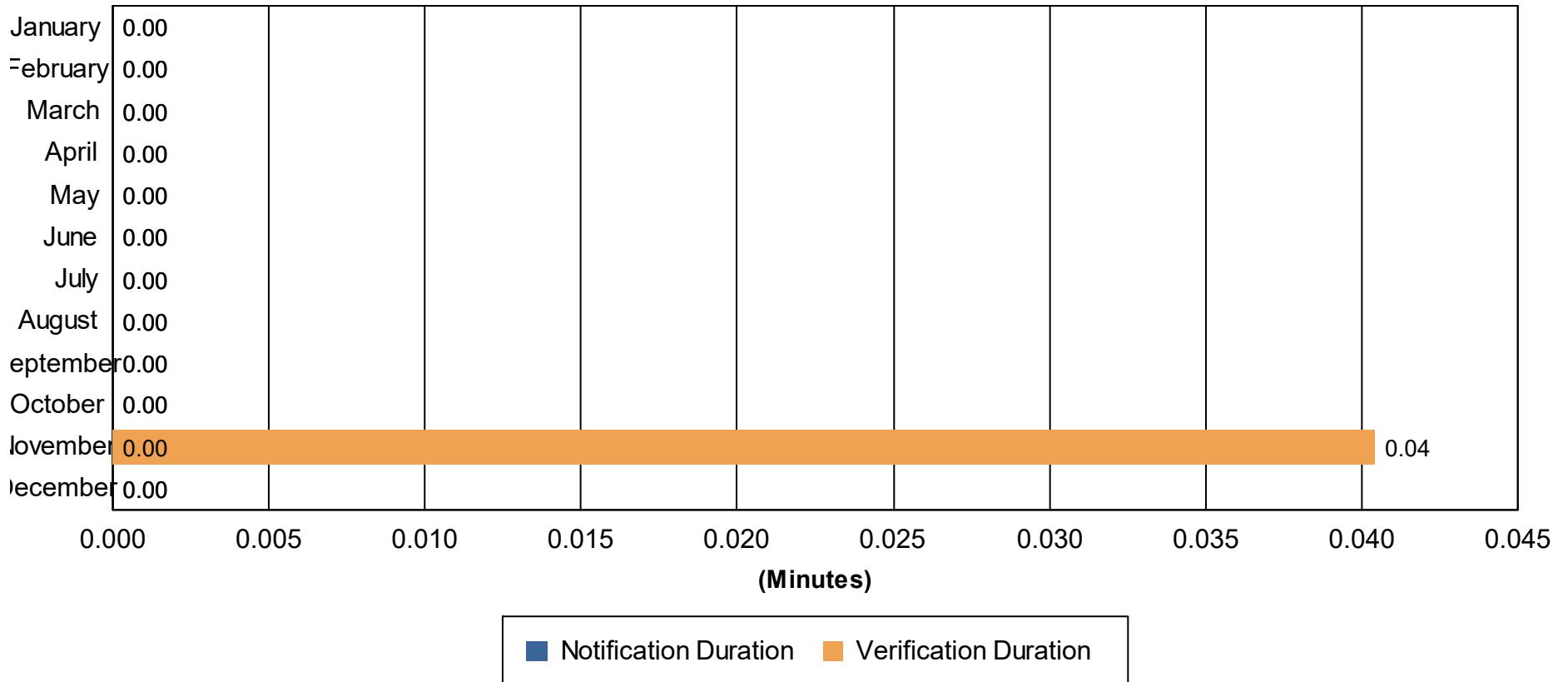
Open Roads Duration (min.): [First Arrival to Travel Lanes Cleared]

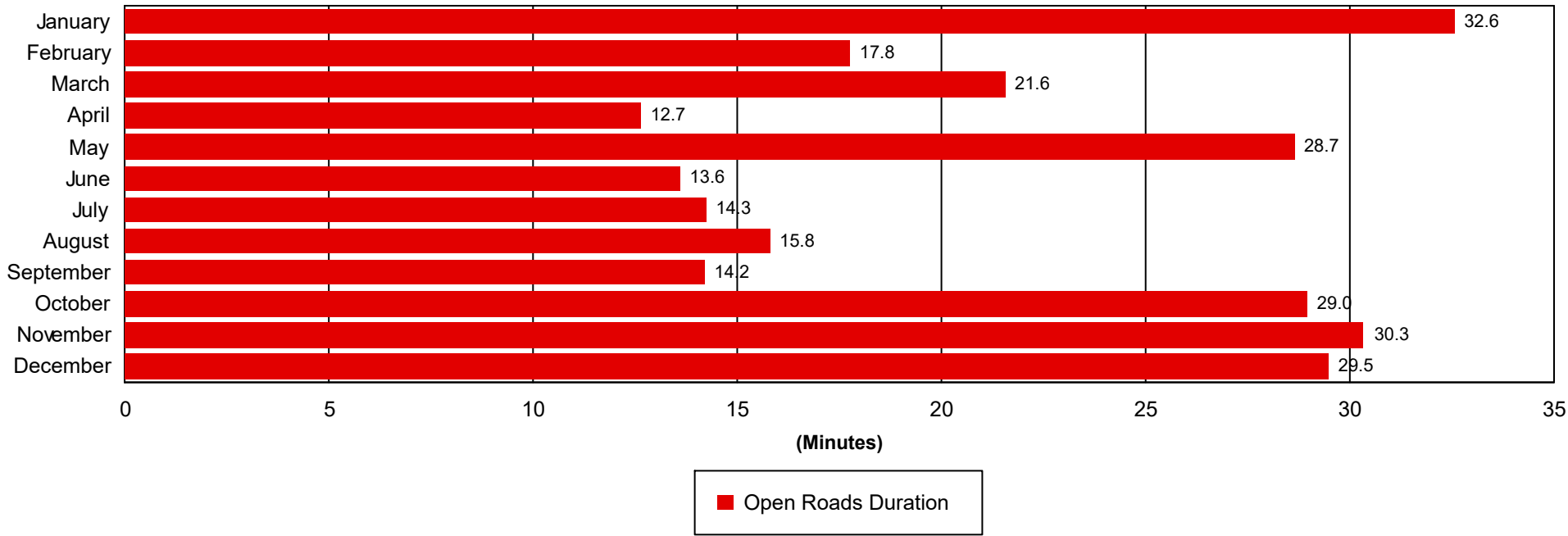
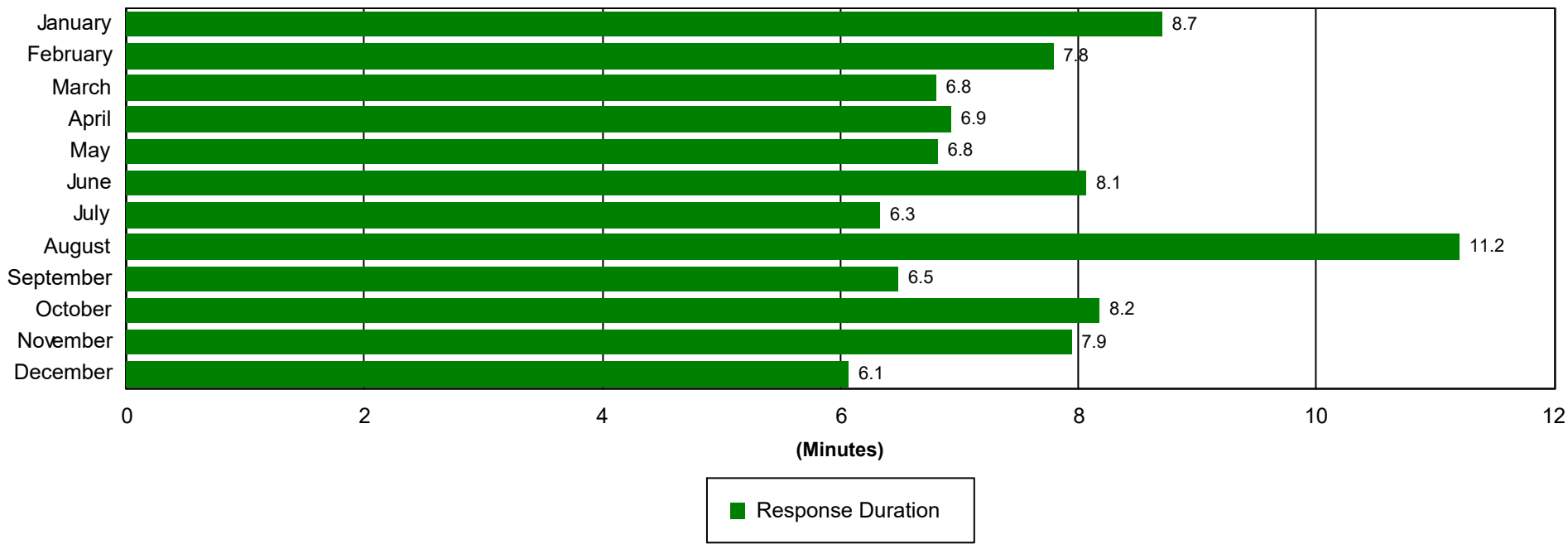
Departure Duration (min.): [Travel Lanes Cleared to Last Departure]

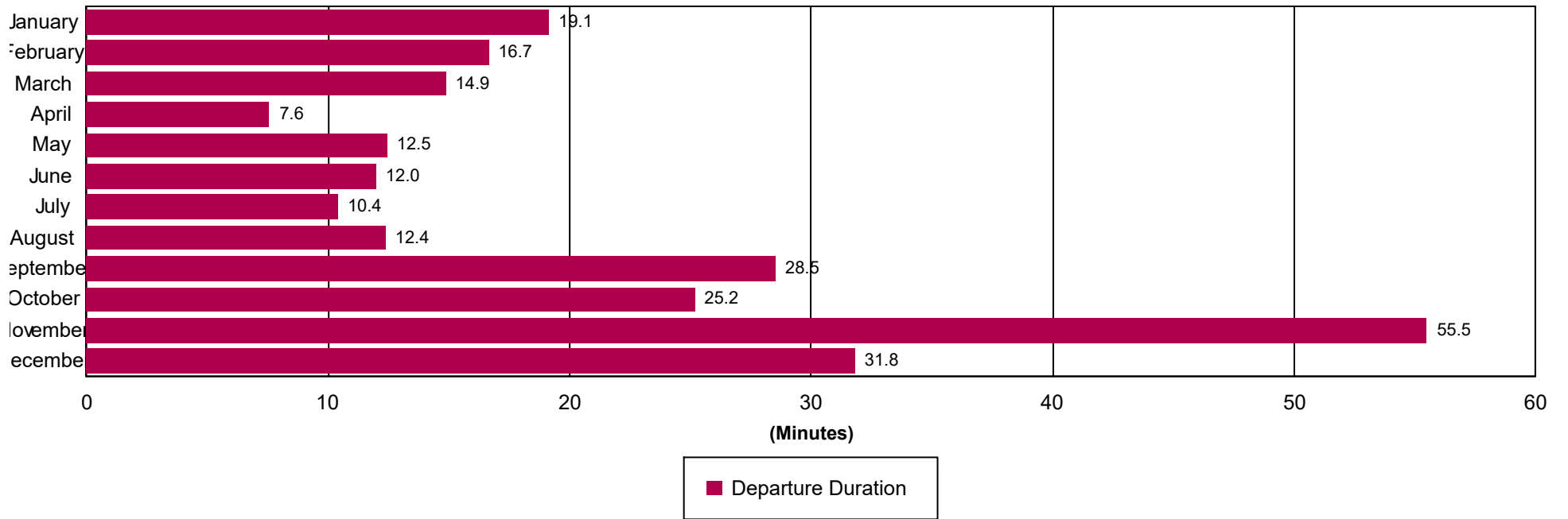
Roadway Clearance Duration (min.): [First Notif to Travel Lanes Cleared]

Incident Clearance Duration (min.): [First Notif to Last Departure]

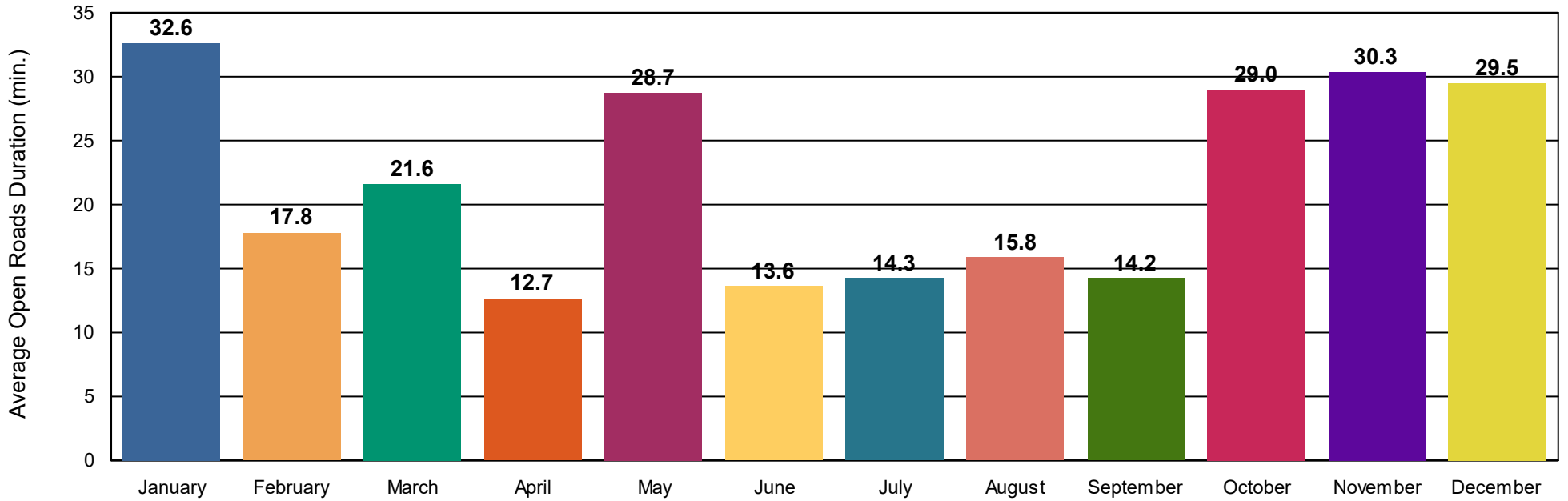
Incident Clearance Duration



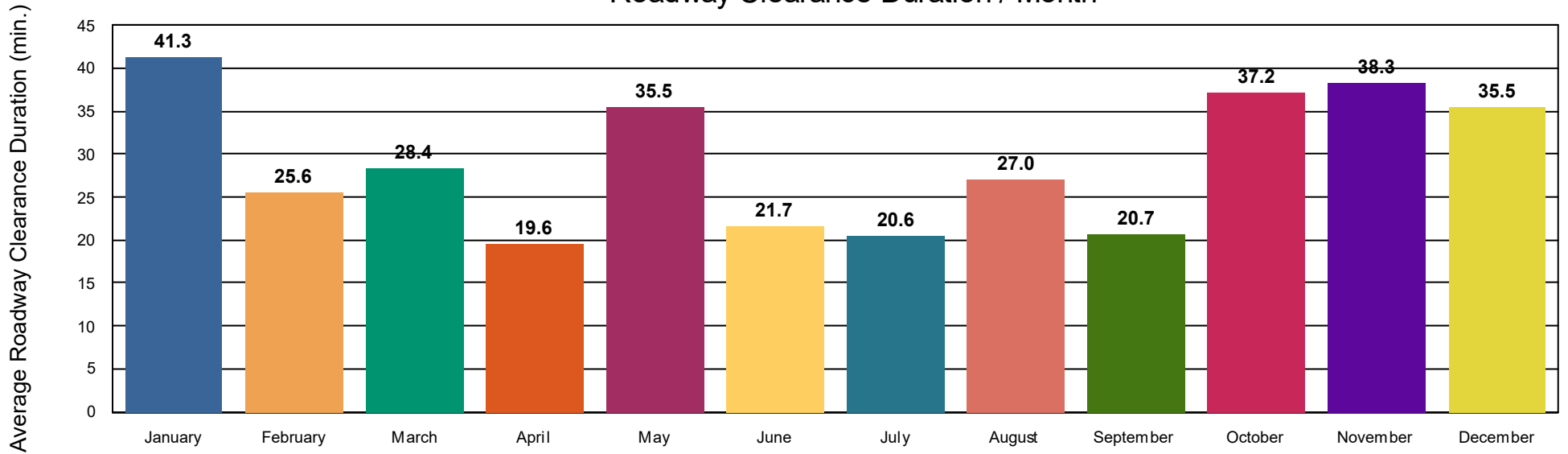




Open Roads Duration / Month



Roadway Clearance Duration / Month



Performance Measures Summary

Incidents with HELP Truck Response

	January	February	March	April	May	June	July	August	September	October	November	December	Total
Events included	225	249	213	234	266	286	279	286	255	228	180	155	2,856
Notification Duration (min.)*	0.0	0.0	0.0	0.0	0.0	0.0	0.0	0.0	0.0	0.0	0.0	0.0	0.0
Verification Duration (min.)	0.0	0.0	0.0	0.0	0.0	0.0	0.0	0.0	0.0	0.0	0.0	0.0	0.0
Response Duration (min.)	8.7	7.8	6.8	6.9	6.8	8.1	6.3	11.2	6.5	6.7	6.8	5.8	7.5
Open Roads Duration (min.)	32.6	17.8	21.6	12.7	28.7	13.6	14.3	15.8	14.2	22.2	20.5	16.7	19.0
Departure Duration (min.)	19.1	16.7	14.9	7.6	12.5	12.0	10.4	12.4	28.5	24.6	63.9	30.8	19.4
Roadway Clearance Duration (min.)	41.3	25.6	28.4	19.6	35.5	21.7	20.6	27.0	20.7	28.8	27.2	22.6	26.5
Incident Clearance Duration (min.)	60.4	42.2	43.2	27.1	47.9	33.7	31.0	39.4	49.2	53.4	91.1	53.4	45.9

Note:

Response Duration (min.): [\[First Notification to First Arrival\]](#)

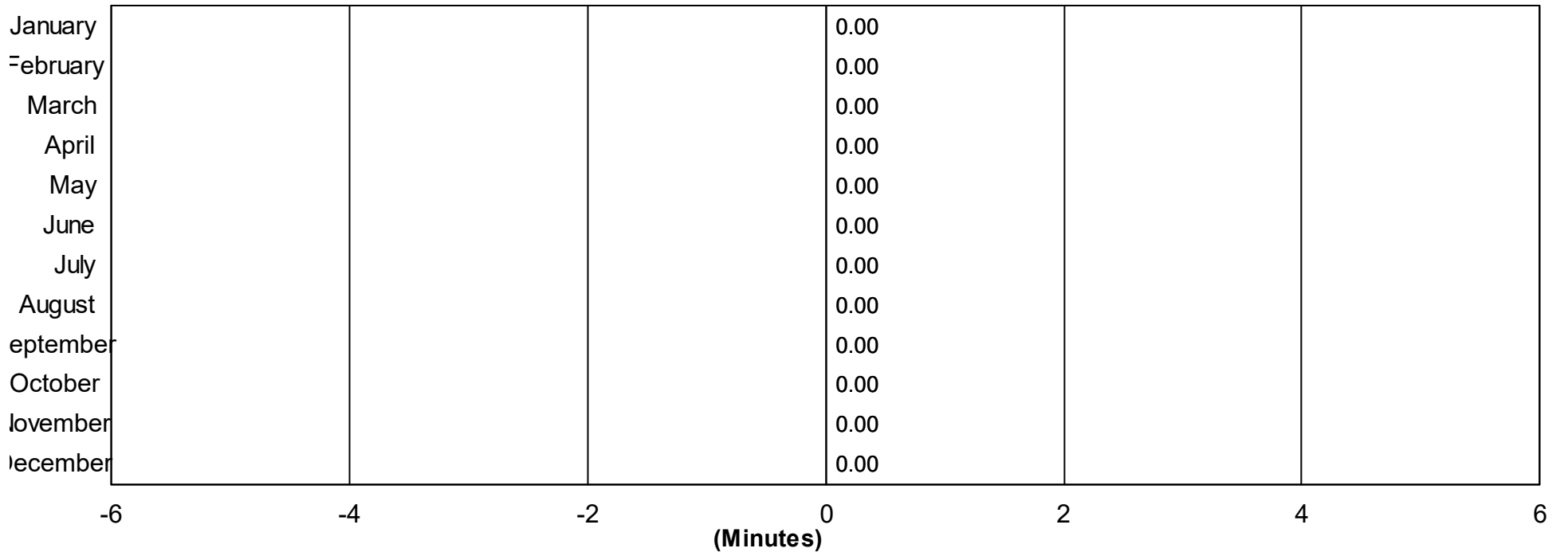
Open Roads Duration (min.): [\[First Arrival to Travel Lanes Cleared\]](#)

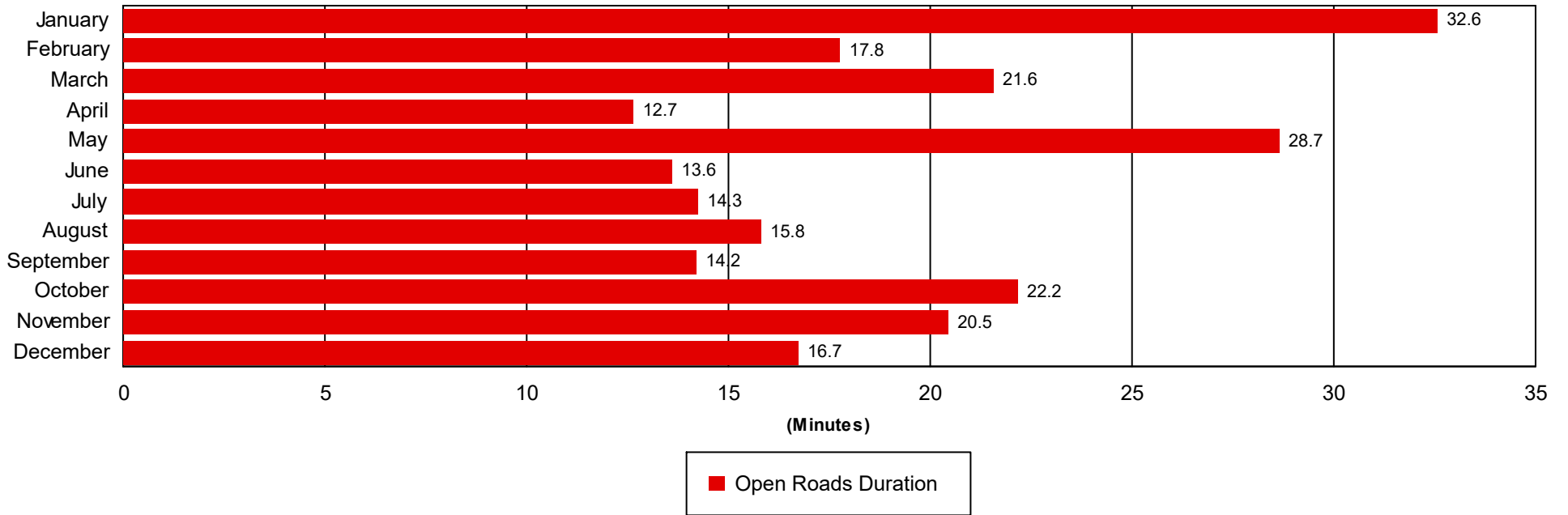
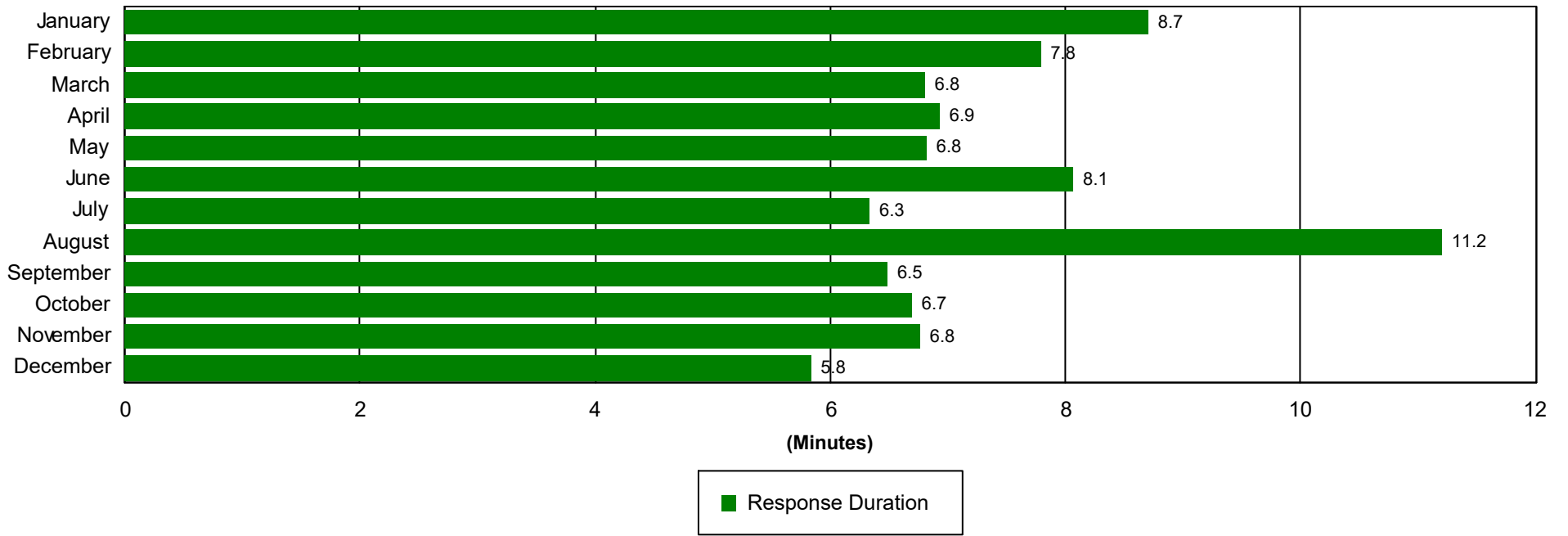
Departure Duration (min.): [\[Travel Lanes Cleared to Last Departure\]](#)

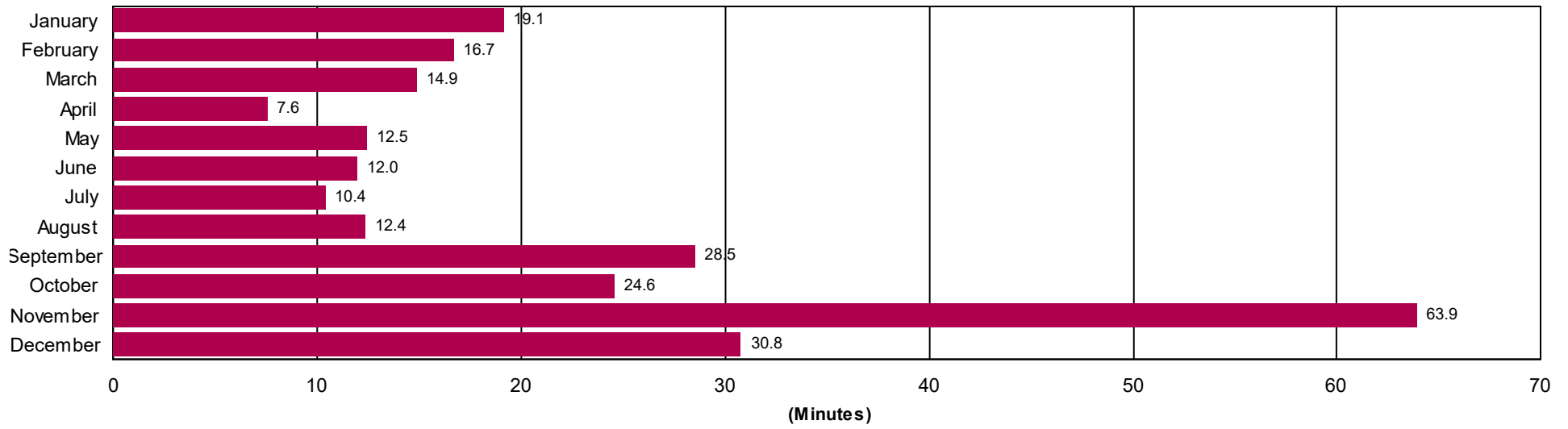
Roadway Clearance Duration (min.): [\[First Notif to Travel Lanes Cleared\]](#)

Incident Clearance Duration (min.): [\[First Notif to Last Departure\]](#)

Incident Clearance Duration

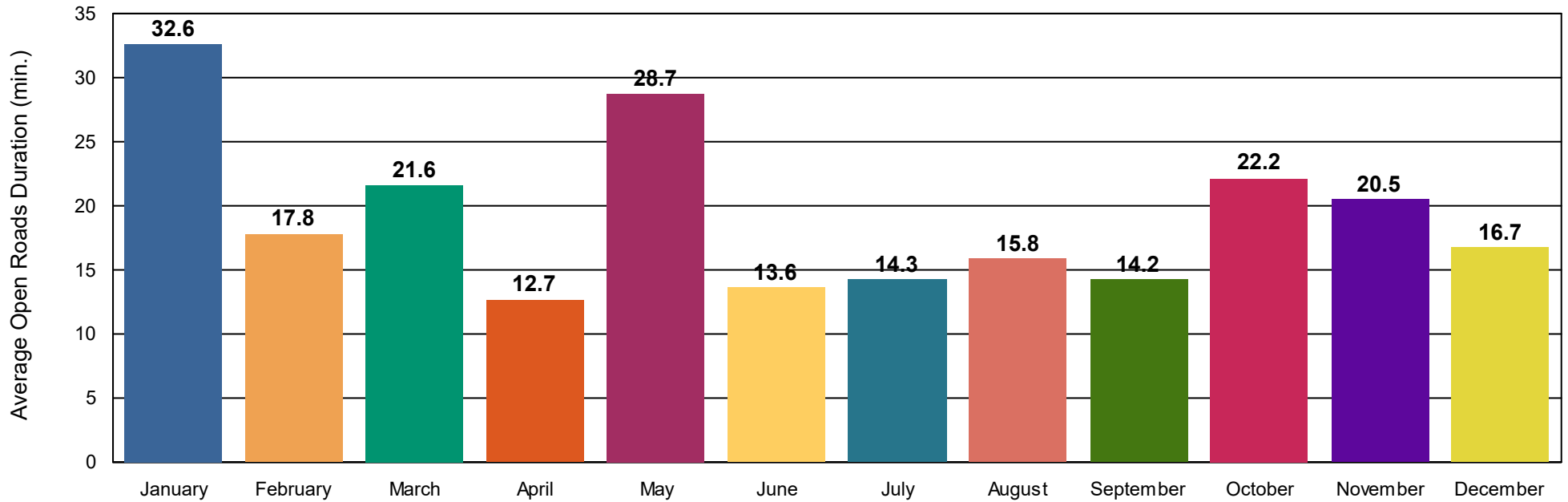




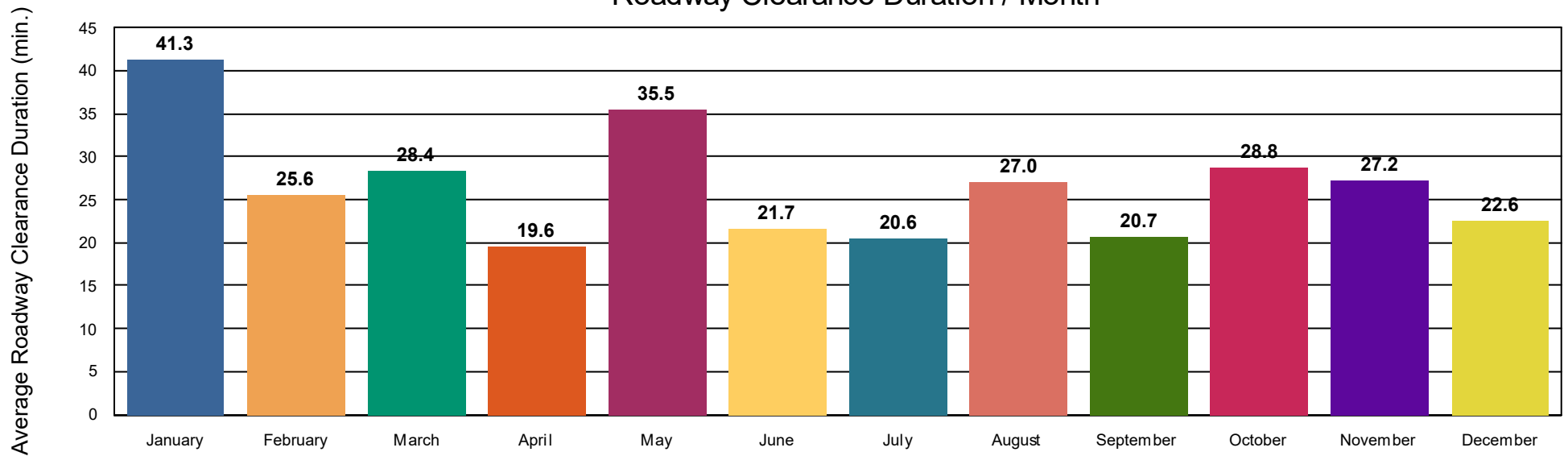


■ Departure Duration

Open Roads Duration / Month



Roadway Clearance Duration / Month



Performance Measures Summary

Incidents without HELP Truck Response

	January	February	March	April	May	June	July	August	September	October	November	December	Total
Events included	82	91	91	71	85	101	100	98	112	112	95	80	1,118
Notification Duration (min.)*										0.0	0.0	0.0	0.0
Verification Duration (min.)										0.0	0.2	0.0	0.1
Response Duration (min.)										22.6	11.5	7.1	12.5
Open Roads Duration (min.)										95.5	60.2	83.9	74.2
Departure Duration (min.)										31.3	30.1	36.3	32.2
Roadway Clearance Duration (min.)										118.1	71.8	90.9	86.7
Incident Clearance Duration (min.)										149.4	102.0	127.2	118.9

Note:

Response Duration (min.): [\[First Notification to First Arrival\]](#)

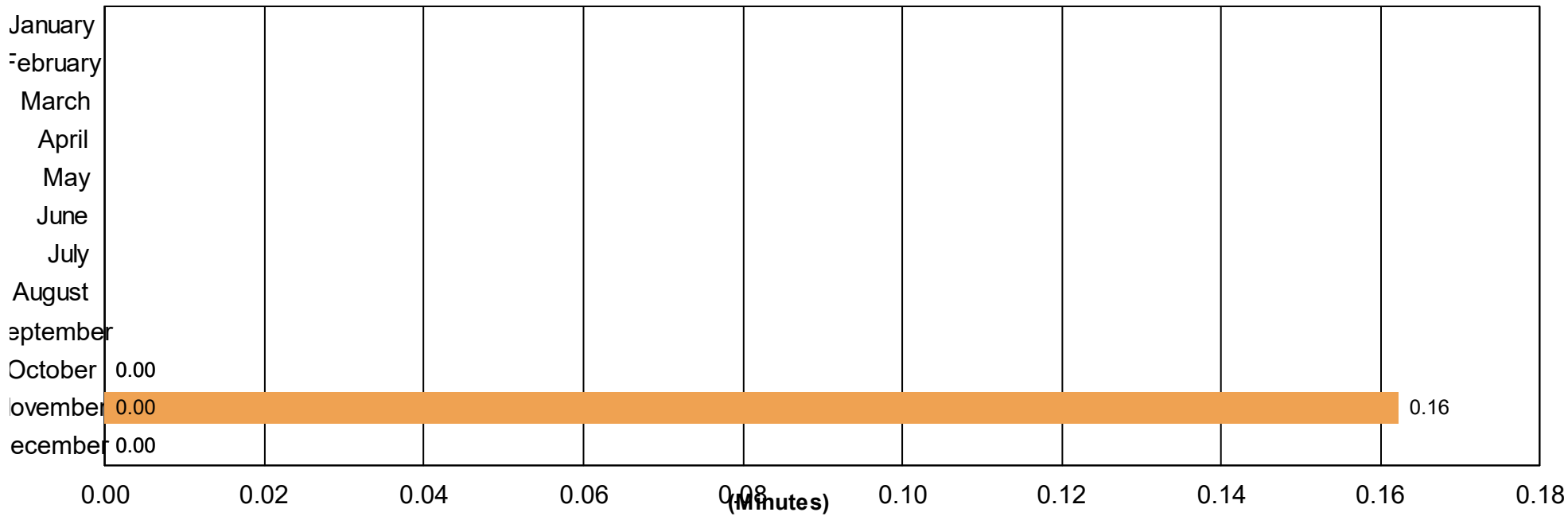
Open Roads Duration (min.): [\[First Arrival to Travel Lanes Cleared\]](#)

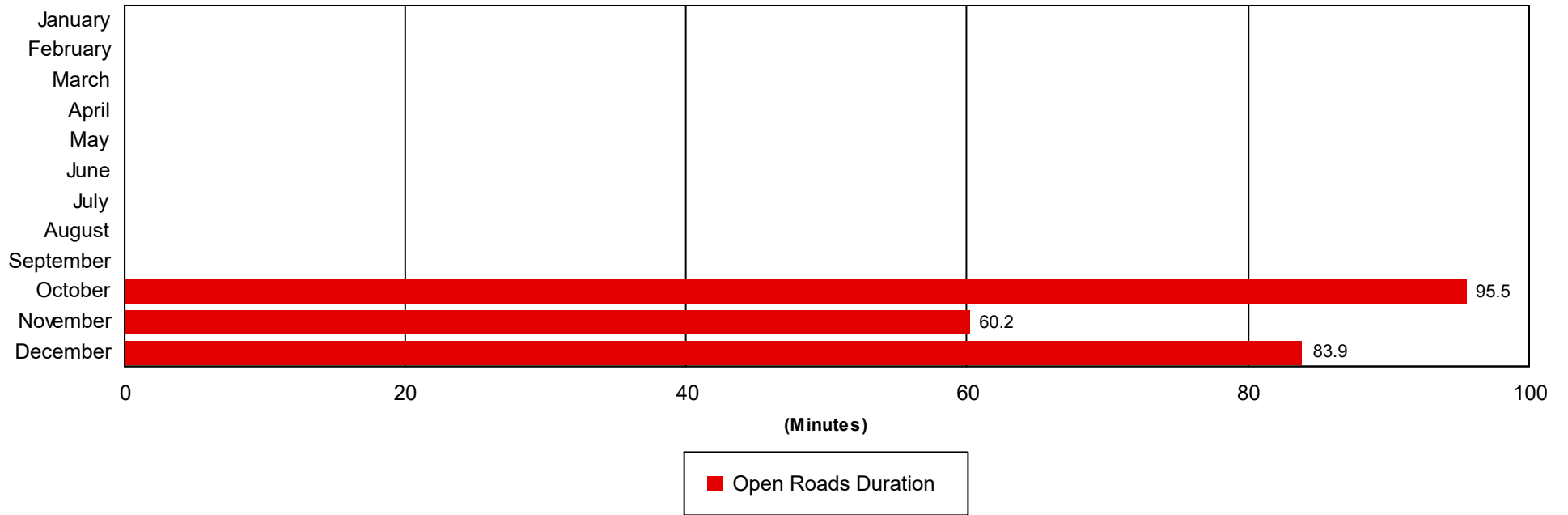
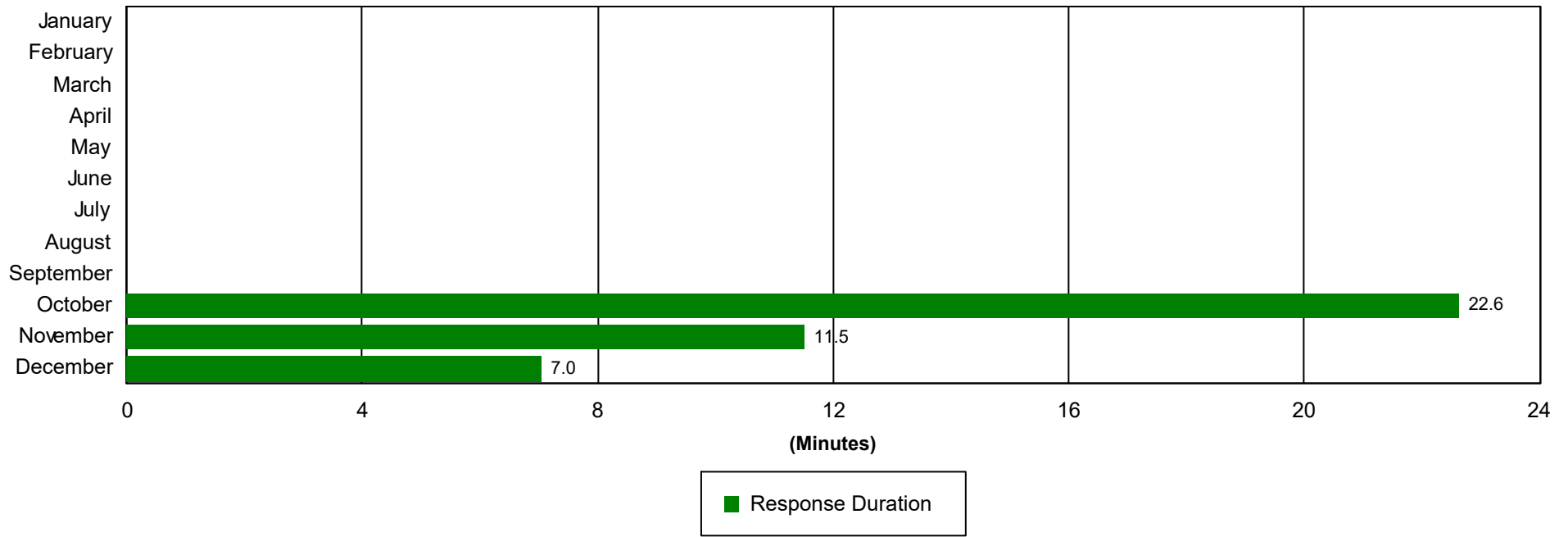
Departure Duration (min.): [\[Travel Lanes Cleared to Last Departure\]](#)

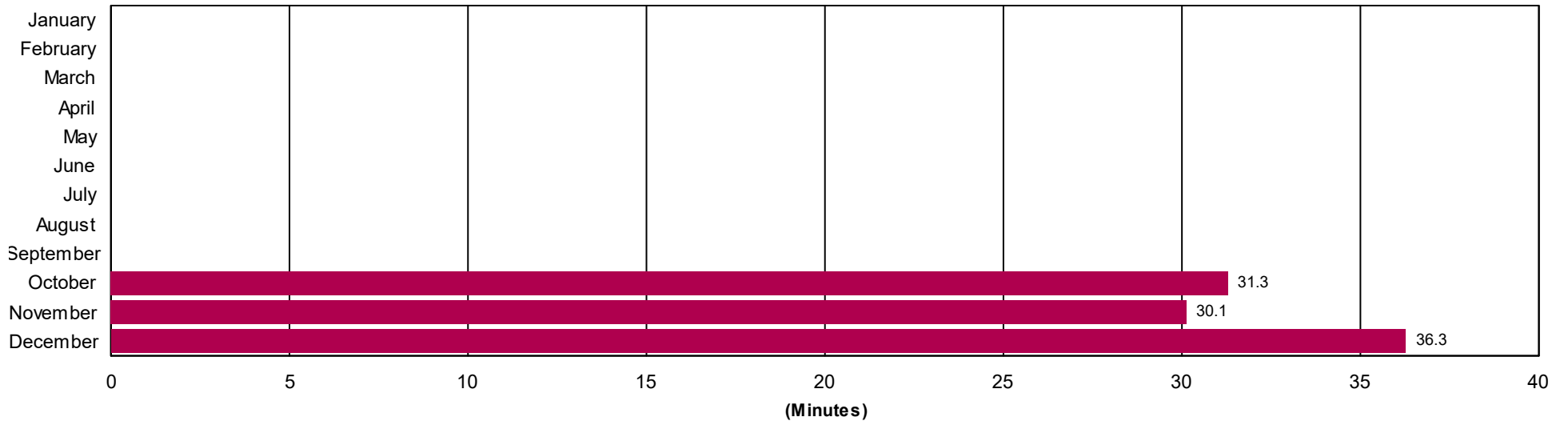
Roadway Clearance Duration (min.): [\[First Notif to Travel Lanes Cleared\]](#)

Incident Clearance Duration (min.): [\[First Notif to Last Departure\]](#)

Incident Clearance Duration

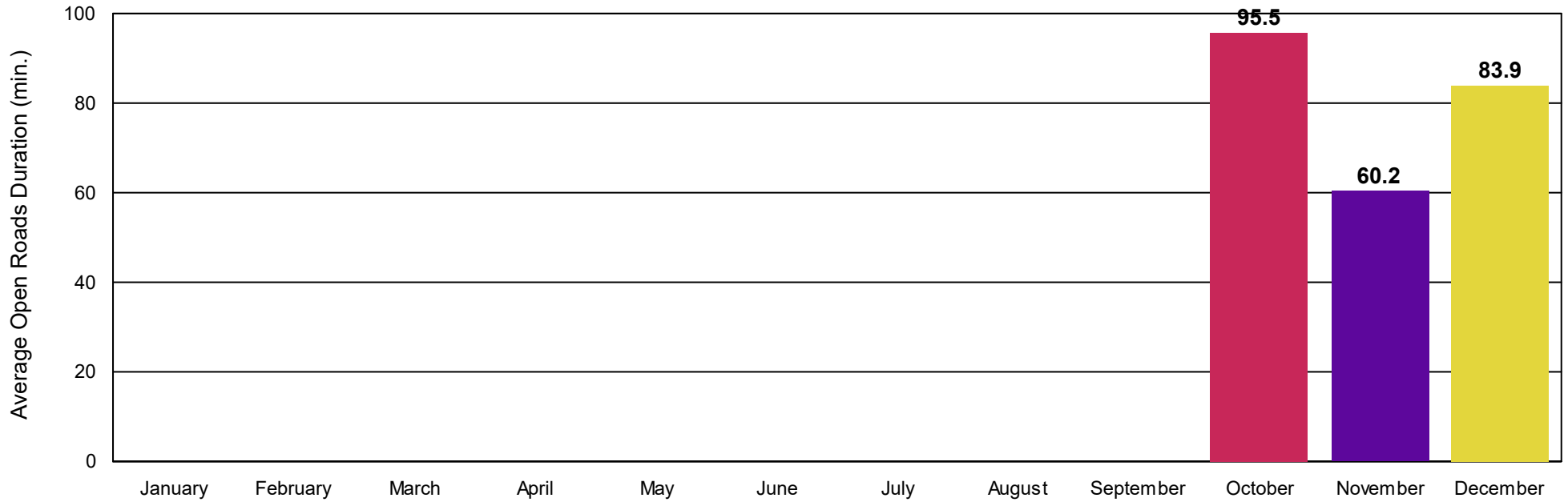




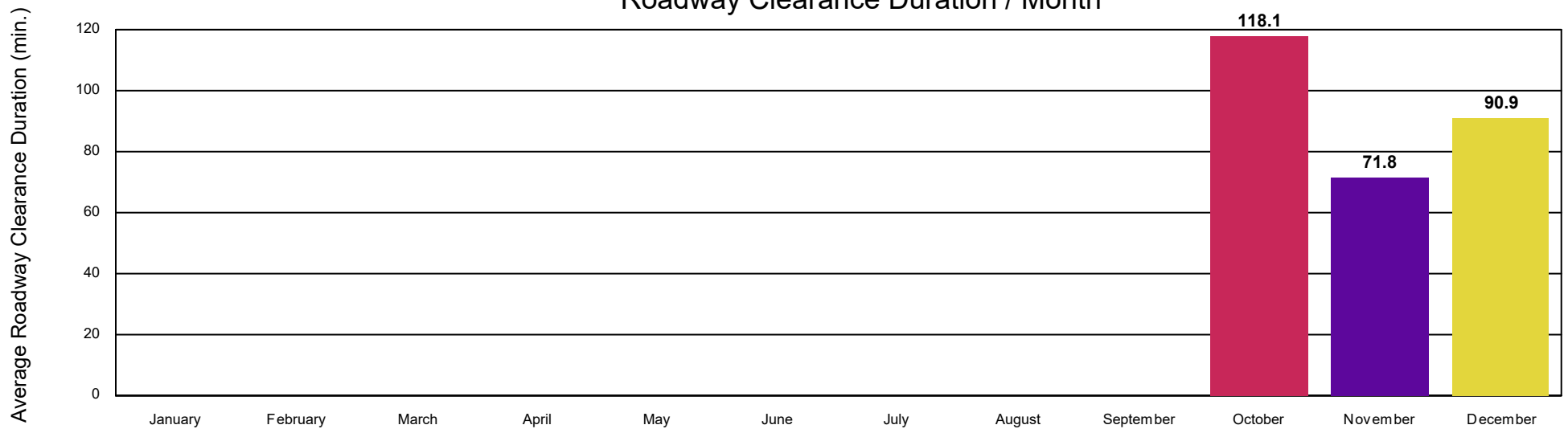


■ Departure Duration

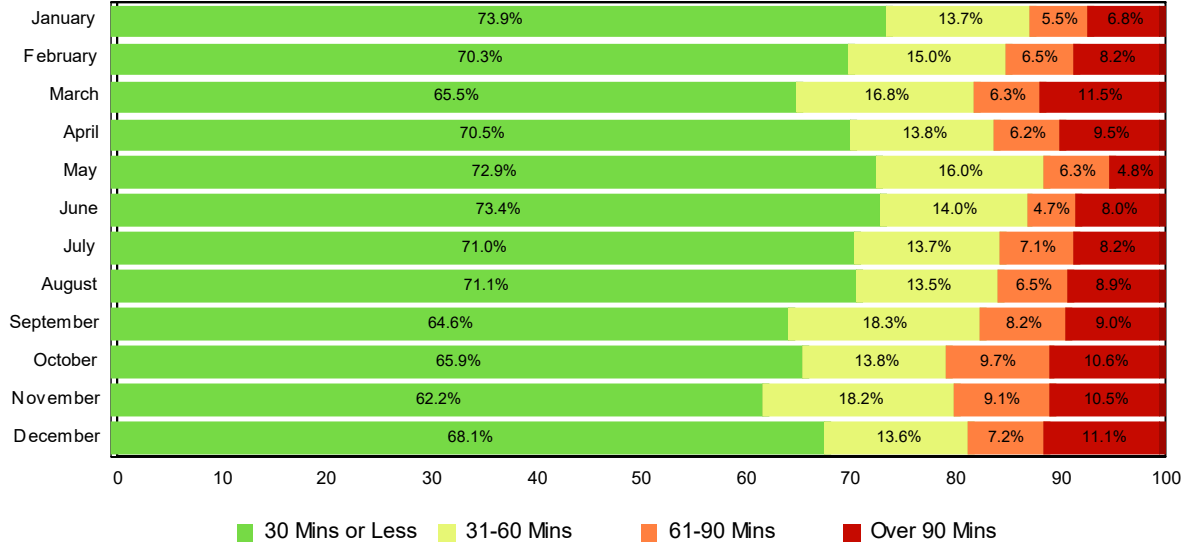
Open Roads Duration / Month



Roadway Clearance Duration / Month

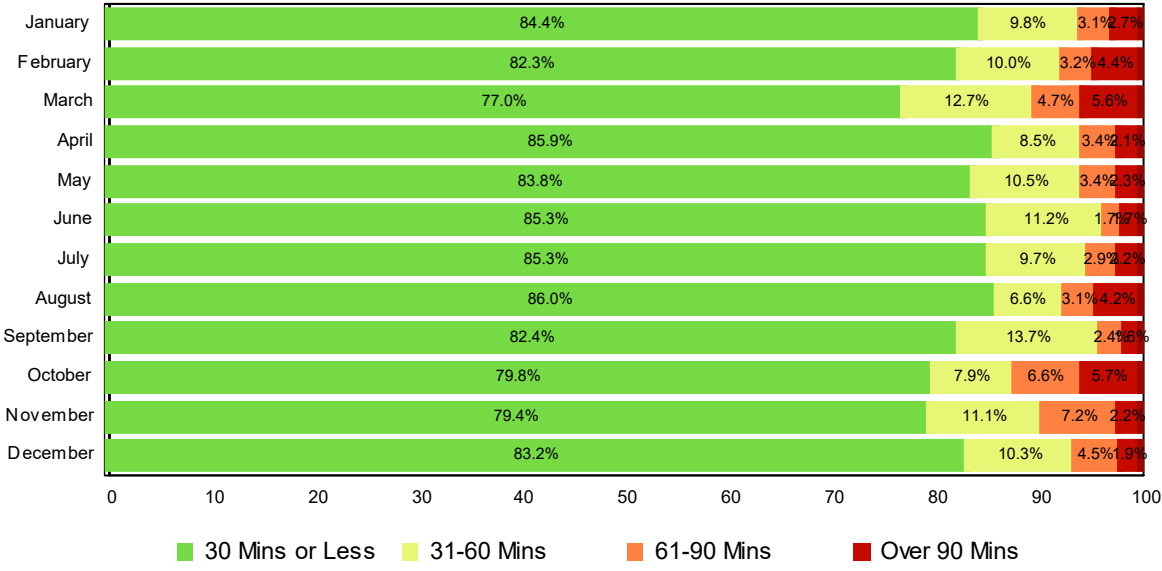


Lane Blockage Clearance Times - Overall



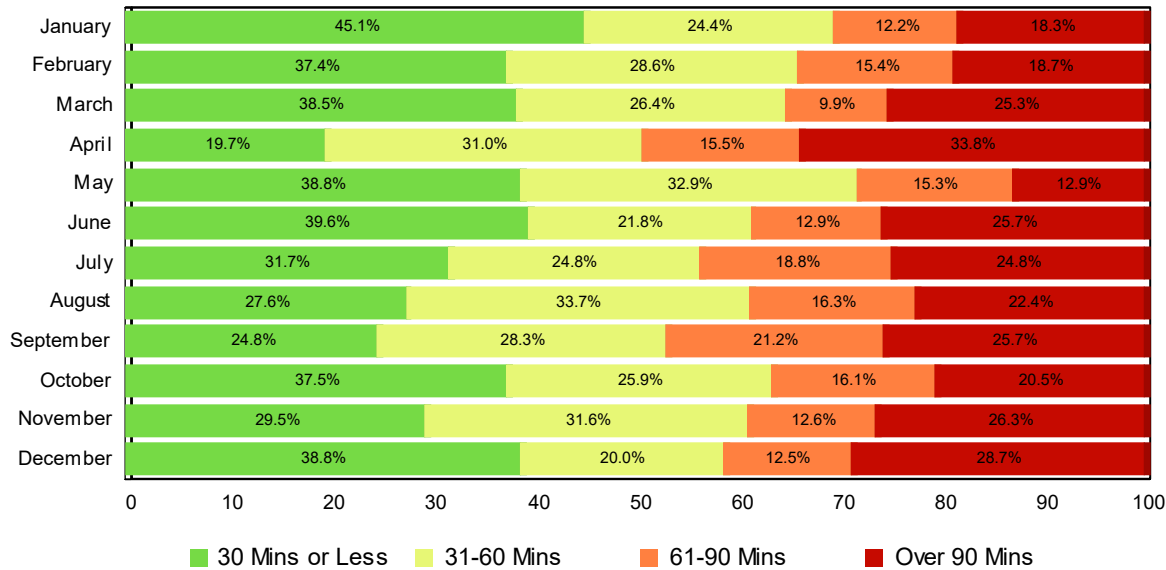
Month	30 Mins or Less	31-60 Mins	61-90 Mins	Over 90 Mins	Total # of Events
January	227	42	17	21	307
February	239	51	22	28	340
March	199	51	19	35	304
April	215	42	19	29	305
May	256	56	22	17	351
June	284	54	18	31	387
July	269	52	27	31	379
August	273	52	25	34	384
September	237	67	30	33	367
October	224	47	33	36	340
November	171	50	25	29	275
December	160	32	17	26	235
Total # of Events	2,754	596	274	350	3,974

Lane Blockage Clearance Times - with HELP Truck Response



Month	30 Mins or Less	31-60 Mins	61-90 Mins	Over 90 Mins	Total # of Events
January	190	22	7	6	225
February	205	25	8	11	249
March	164	27	10	12	213
April	201	20	8	5	234
May	223	28	9	6	266
June	244	32	5	5	286
July	238	27	8	6	279
August	246	19	9	12	286
September	210	35	6	4	255
October	182	18	15	13	228
November	143	20	13	4	180
December	129	16	7	3	155
Total # of Events	2,375	289	105	87	2,856

Lane Blockage Clearance Times - without HELP Truck Response



Month	30 Mins or Less	31-60 Mins	61-90 Mins	Over 90 Mins	Total # of Events
January	37	20	10	15	82
February	34	26	14	17	91
March	35	24	9	23	91
April	14	22	11	24	71
May	33	28	13	11	85
June	40	22	13	26	101
July	31	25	19	25	100
August	27	33	16	22	98
September	27	32	24	29	112
October	42	29	18	23	112
November	28	30	12	25	95
December	31	16	10	23	80
Total # of Events	379	307	169	263	1,118

All Incidents with Travel Lane Blockage and HELP Truck Response

No. of Lanes Blocked	%	Count	%	Count	%	Count	%	Count	Avg Clear Time (Min)
1	88	1787	96	1953	99	2002	1	27	16
2	76	454	89	534	94	566	6	35	27
3	61	85	79	111	90	126	10	14	48
4	59	43	77	56	88	64	12	9	54
5	42	5	75	9	83	10	17	2	40
6	100	1	100	1	100	1	0	0	0
Totals	83	2,375	93	2,664	97	2,769	3	87	21

<=30 Mins

<=60 Mins

<=90 Mins

>90 Mins

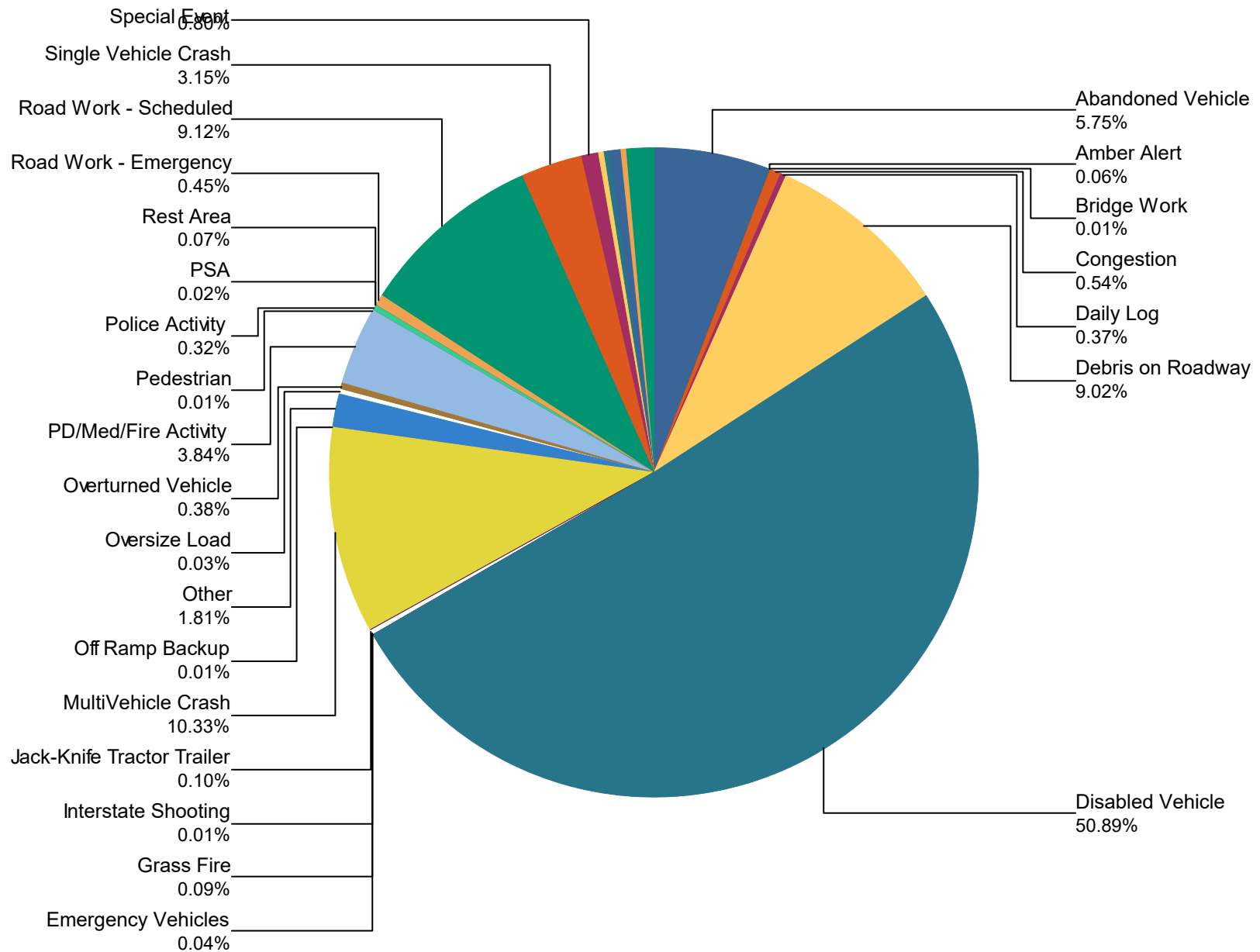
Travel Lane Blockage Events- Roadway

Roadway	Lane Blockage Events Count	All Incidents	% of Incidents with Lane Blockage
		79	
I0024	1306	5,211	25.1
I0040	118	191	61.8
I0075	1342	7,419	18.1
I0124	6	16	37.5
Region 2 TMC	0	65	0.0
SR001	11	17	64.7
SR002	11	20	55.0
SR008	16	19	84.2
SR015	1	1	100.0
SR017	0	1	0.0
SR024	12	14	85.7
SR026	3	5	60.0
SR027	3	6	50.0
SR028	14	17	82.4
SR029	347	1,352	25.7
SR030	13	22	59.1
SR033	3	4	75.0
SR039	2	4	50.0
SR040	7	8	87.5
SR050	2	2	100.0
SR052	1	1	100.0
SR053	4	9	44.4
SR055	1	1	100.0
SR056	11	12	91.7
SR058	13	17	76.5
SR060	6	12	50.0
SR062	2	3	66.7
SR068	12	16	75.0

SR074	3	5	60.0
SR083	1	1	100.0
SR084	3	5	60.0
SR085	1	2	50.0
SR096	4	6	66.7
SR101	1	1	100.0
SR108	4	5	80.0
SR111	17	28	60.7
SR121	0	1	0.0
SR127	3	3	100.0
SR130	1	1	100.0
SR134	1	1	100.0
SR135	5	5	100.0
SR136	4	5	80.0
SR141	1	1	100.0
SR145	0	1	0.0
SR146	3	3	100.0
SR148	0	1	0.0
SR150	2	2	100.0
SR153	608	2,647	23.0
SR154	1	1	100.0
SR156	4	4	100.0
SR163	9	12	75.0
SR164	1	1	100.0
SR262	1	1	100.0
SR280	2	3	66.7
SR281	0	2	0.0
SR290	2	5	40.0
SR291	0	1	0.0
SR294	0	1	0.0
SR298	4	4	100.0
SR304	7	11	63.6
SR305	2	4	50.0

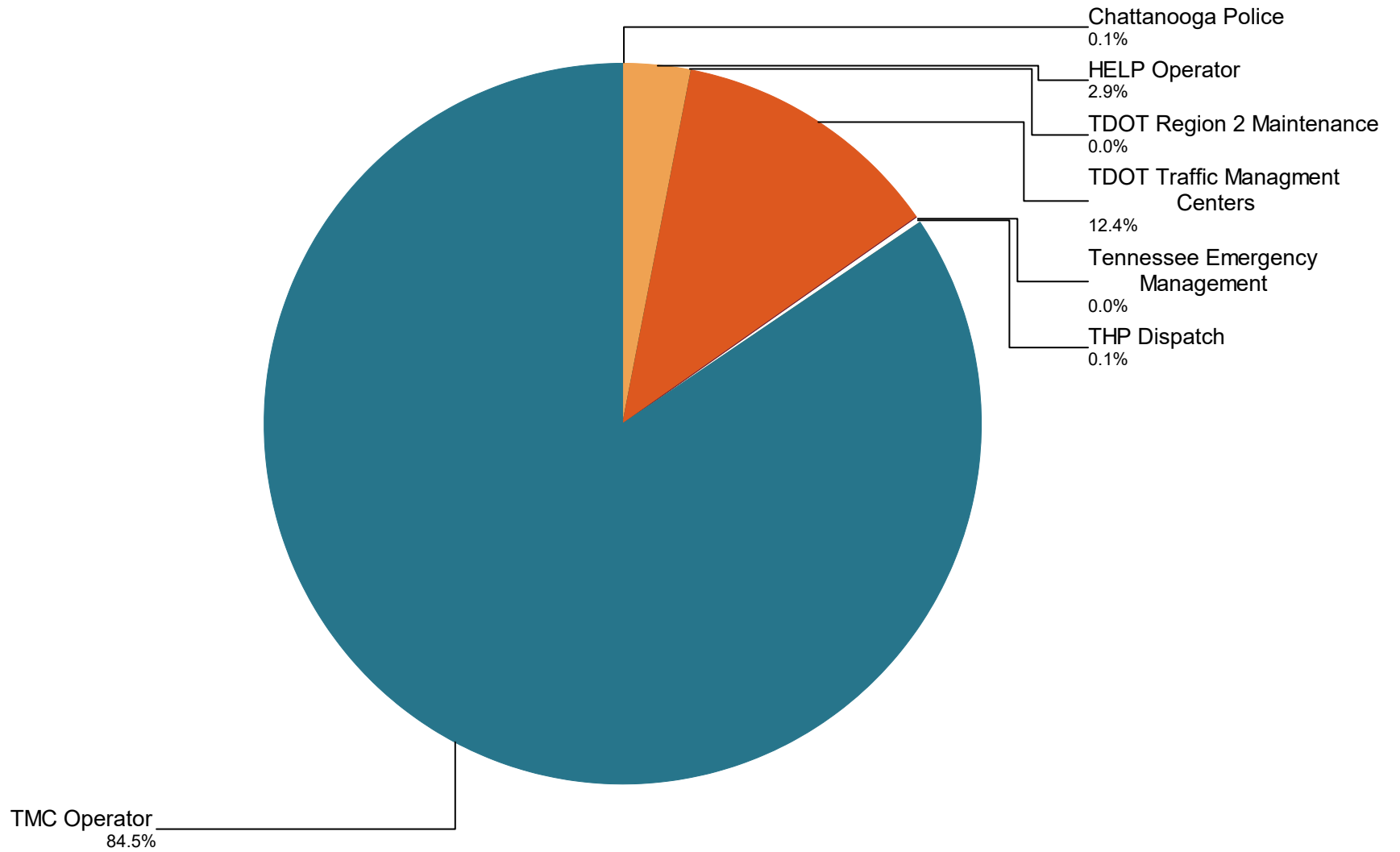
SR306	2	2	100.0
SR307	3	4	75.0
SR310	3	5	60.0
SR311	1	1	100.0
SR312	1	3	33.3
SR314	1	1	100.0
SR317	3	32	9.4
SR319	4	4	100.0
SR321	0	1	0.0
SR325	1	1	100.0
SR377	1	1	100.0
SR419	0	1	0.0
All Roadways	3,982	17,374	22.9

Percentage of Event Types for All Events in Current Year



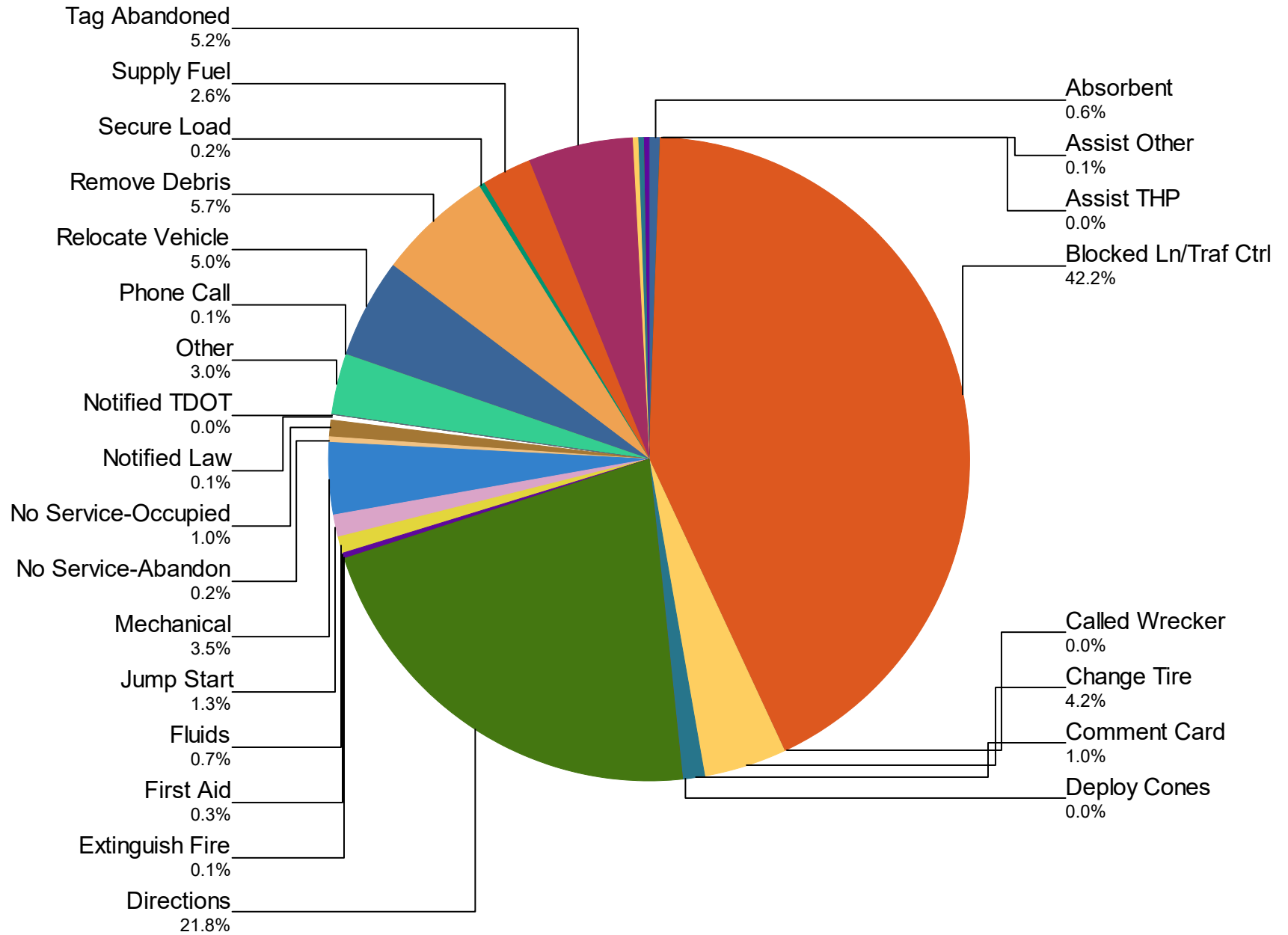
	January	February	March	April	May	June	July	August	September
Rest Area	0	0	0	1	3	0	2	4	1
Road Work - Emergency	8	17	13	7	7	4	10	9	2
Road Work - Scheduled	90	56	110	131	134	172	223	161	202
Single Vehicle Crash	43	67	53	42	45	60	49	43	52
Special Event	3	2	3	14	19	24	23	23	32
Test Incident	7	5	1	2	0	1	1	1	3
Unknown	3	3	0	2	1	1	5	3	0
Vehicle Fire	9	11	11	9	11	9	13	13	4
Visibility	0	0	0	0	0	0	0	0	0
Weather	14	58	31	19	19	12	15	22	15
Total	1,748	1,746	1,523	1,472	1,676	1,825	1,851	1,763	1,727

Incidents by Detection Source



Notifier Agency	January	February	March	April	May	June	July	August	September	October
Chattanooga Police	0	0	0	0	0	0	0	0	0	0
HELP Operator	0	0	0	0	0	0	0	0	0	88
TDOT Region 2 Maintenance	0	0	0	0	0	0	0	0	0	1
TDOT Traffic Managment Centers	261	312	253	245	275	287	218	166	228	180
Tennessee Emergency Management	0	0	0	0	0	0	0	0	0	0
THP Dispatch	0	0	0	0	0	0	0	0	0	1
TMC Operator	1,487	1,434	1,270	1,227	1,401	1,538	1,633	1,597	1,499	1,520
Total	1,748	1,746	1,523	1,472	1,676	1,825	1,851	1,763	1,727	1,790

Percentage of Activity Types for HELP Truck Activities in Current Year



Activity Types for All Activities	January	February	March	April	May	June	July	August	September
Absorbent	5	8	9	2	5	7	7	9	20
Assist Other	0	0	0	0	0	0	0	0	0
Assist THP	0	0	0	0	0	0	0	0	0
Blocked Ln/Traf Ctrl	409	308	330	408	495	487	535	540	584
Called Wrecker	1	0	0	1	0	2	0	0	1
Change Tire	58	34	37	61	50	47	49	71	59
Comment Card	6	12	4	6	8	21	14	15	19
Deploy Cones	0	0	0	0	0	0	0	0	0
Directions	274	218	207	198	254	253	281	298	306
Extinguish Fire	1	1	0	2	1	2	2	0	0
First Aid	2	3	2	2	3	6	6	6	4
Fluids	10	7	5	6	9	12	8	9	16

	January	February	March	April	May	June	July	August	September
Jump Start	9	16	13	13	7	13	20	20	15
Mechanical	49	24	33	38	44	42	51	56	45
No Service-Abandon	4	3	3	2	4	0	1	3	1
No Service-Occupied	14	14	19	17	30	10	13	2	4
Notified Law	0	0	0	5	1	1	1	4	1
Notified TDOT	0	0	0	0	0	0	0	0	0
Other	30	24	19	24	77	44	43	47	57
Phone Call	1	1	2	0	3	2	1	0	3
Relocate Vehicle	56	62	53	38	58	52	64	77	66
Remove Debris	43	28	51	93	61	72	74	73	100
Secure Load	2	0	5	4	2	5	4	4	3
Supply Fuel	28	51	32	20	23	27	35	24	31
Tag Abandoned	71	45	51	47	53	55	62	64	59

	January	February	March	April	May	June	July	August	September
Tire	0	0	0	0	0	0	0	0	0
Transported	7	9	4	3	2	1	1	0	0
Unable to Locate	3	0	0	1	1	0	2	0	1
Unalbe to Locate	0	0	0	0	0	0	0	0	0
Welfare Check	0	0	0	0	0	0	0	0	0
Wrecker Towed	3	7	4	2	7	8	0	2	0
Total	1,086	875	883	993	1,198	1,169	1,274	1,324	1,395

DMS Duration

	August	September	October	November	December
Avg % ON Time	11.2	102.6	48.5	53.5	65.2
Avg Post Time (hr)	8.8	92.4	5.3	1.5	2.3
Avg Messages Per Sign	9.5	8.0	67.6	262.8	213.4
Total Messages Posted	416	352	2,974	11,561	9,391