

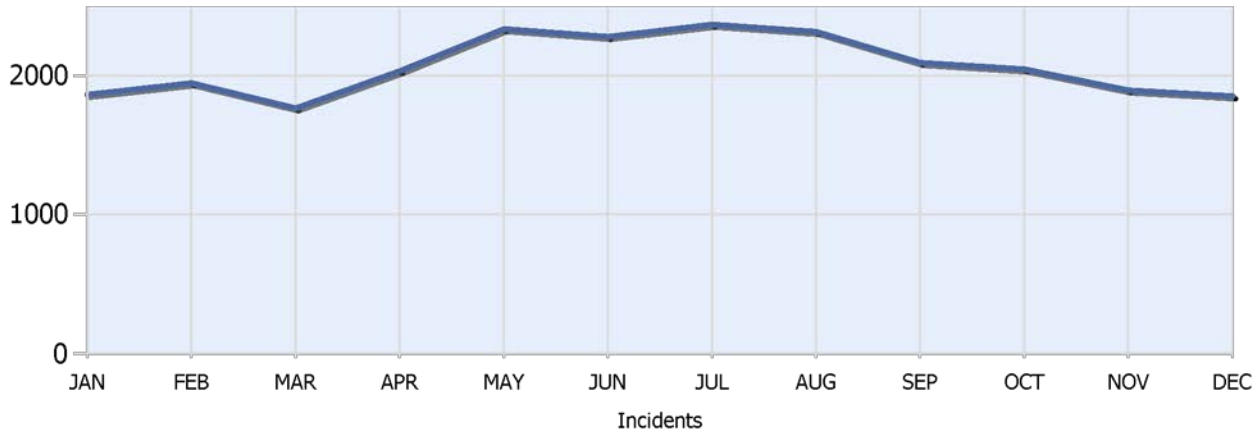


Quarter 4, 2018

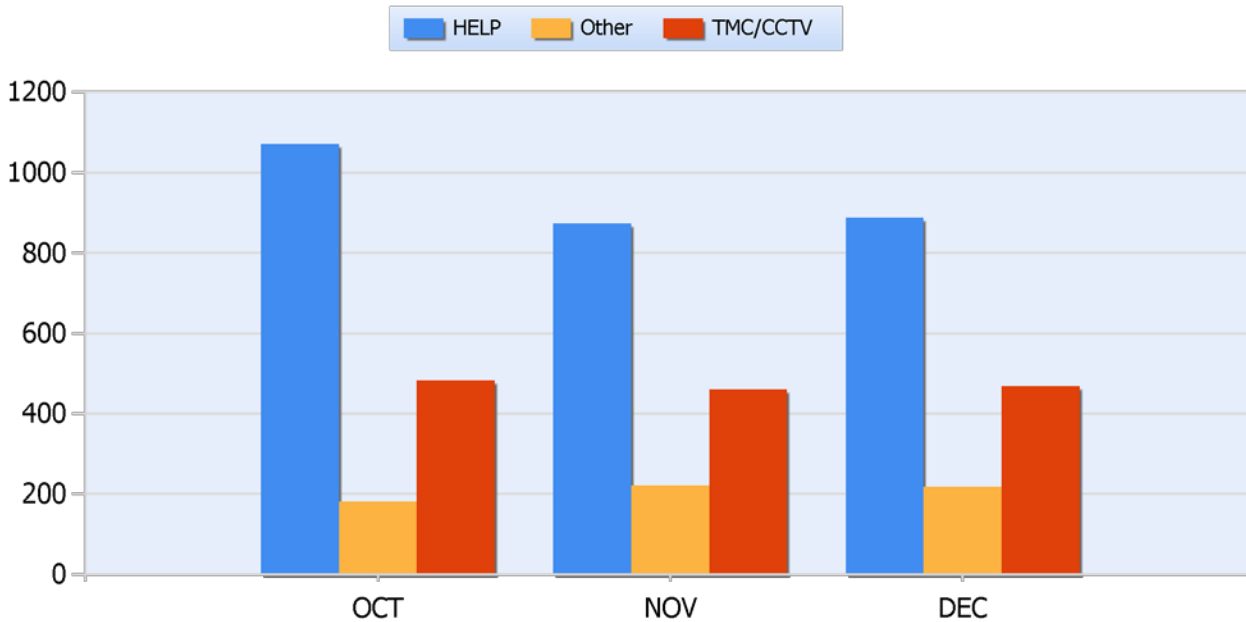
Total Incidents Managed This Quarter: 5798

## Incidents Managed YTD

Total Incidents Managed YTD - 24816



## Incidents By Detection Source

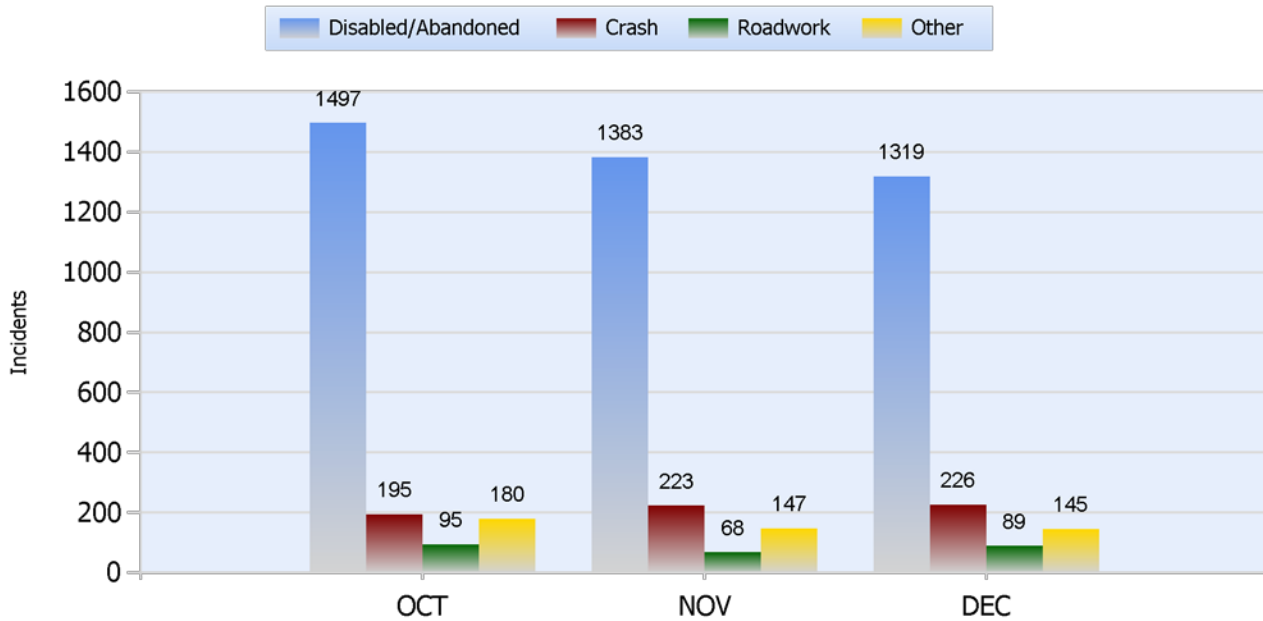




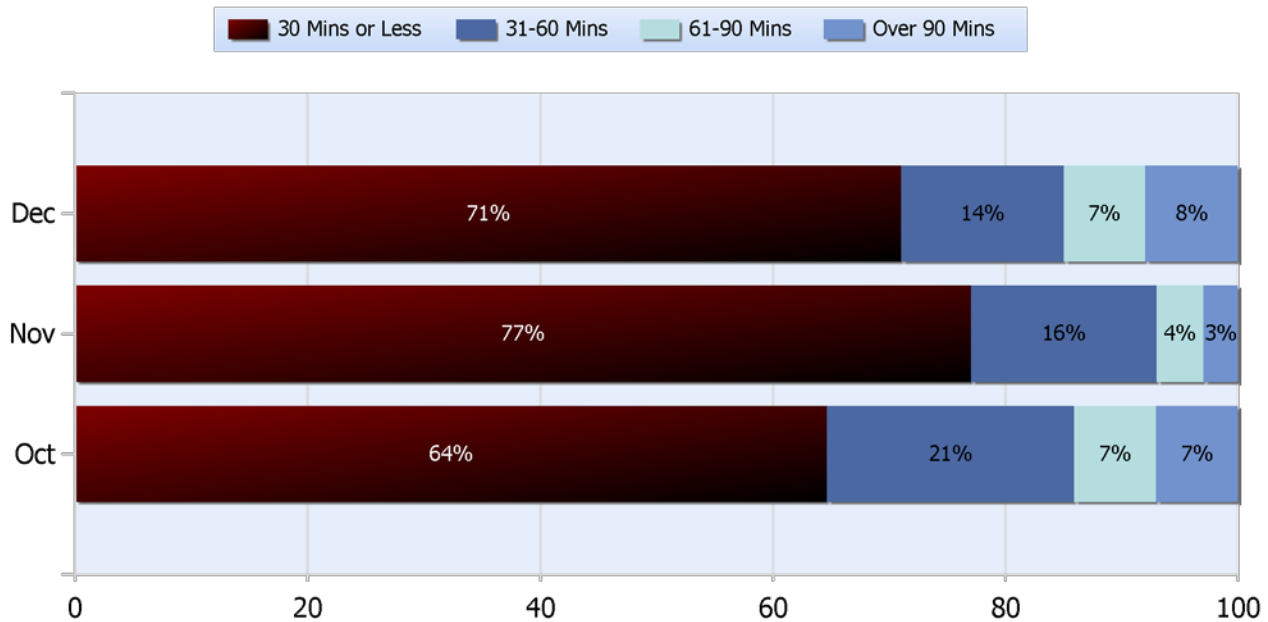
Quarter 4, 2018

Total Incidents Managed This Quarter: 5798

## Total Roadway Incidents



## Lane Blockage Clearance Times Overall

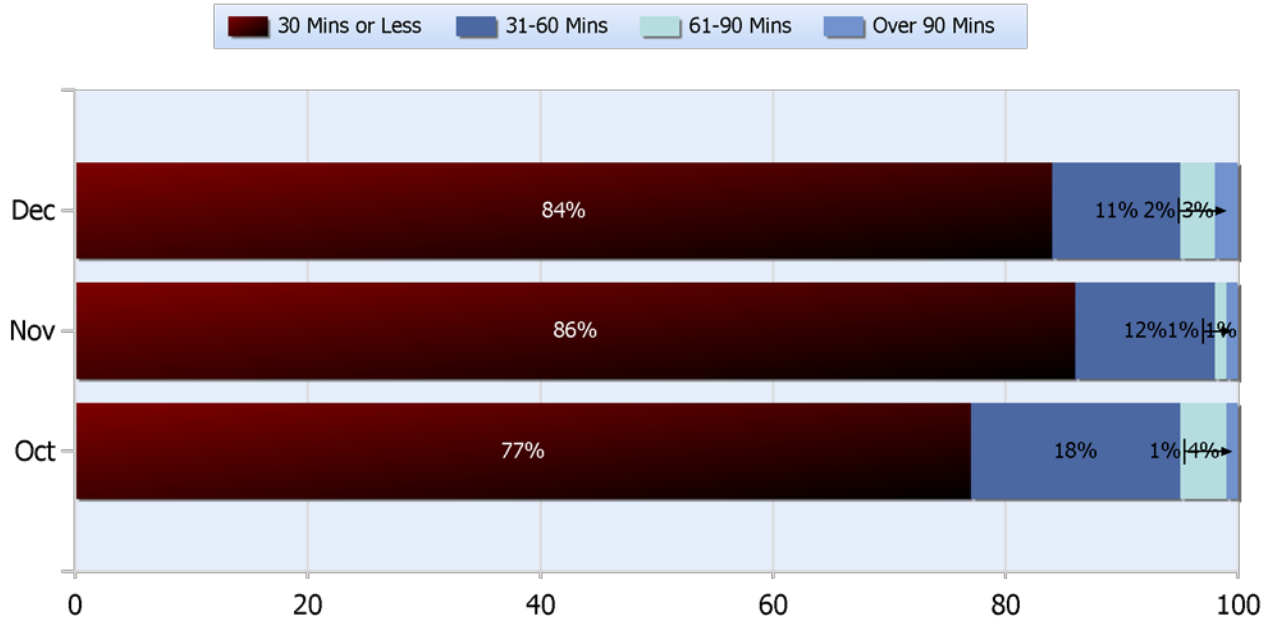




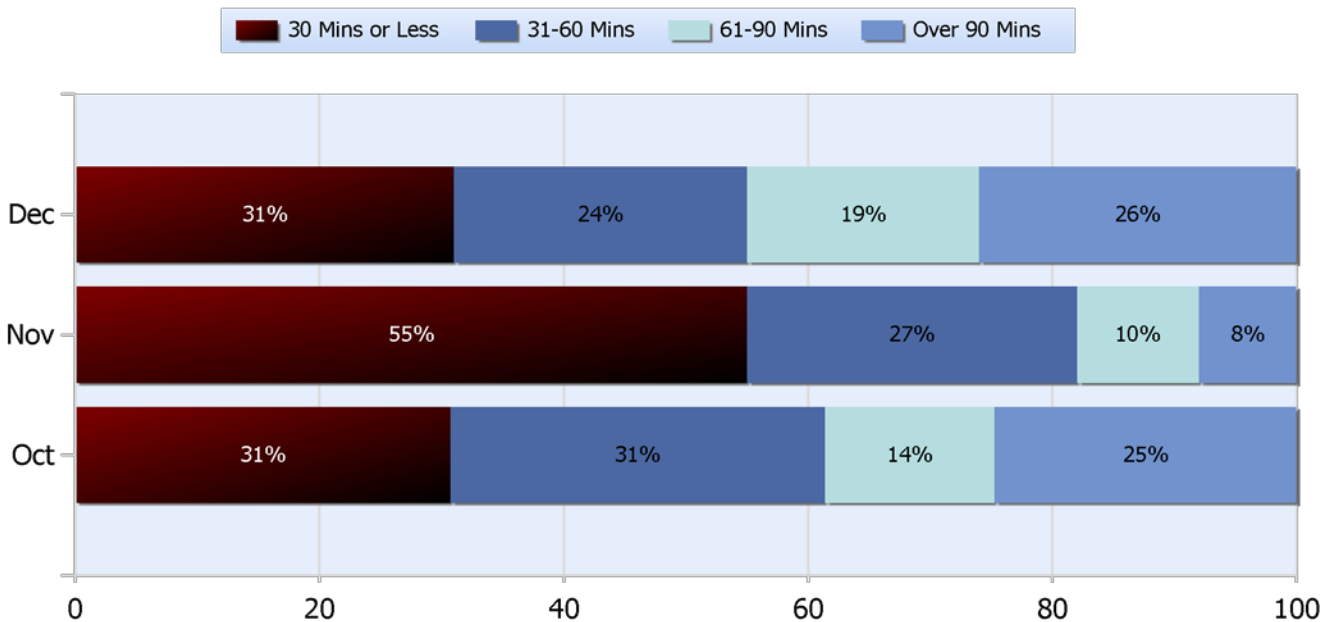
Quarter 4, 2018

Total Incidents Managed This Quarter: 5798

## Lane Blockage Clearance Times Urban



## Lane Blockage Clearance Times Rural

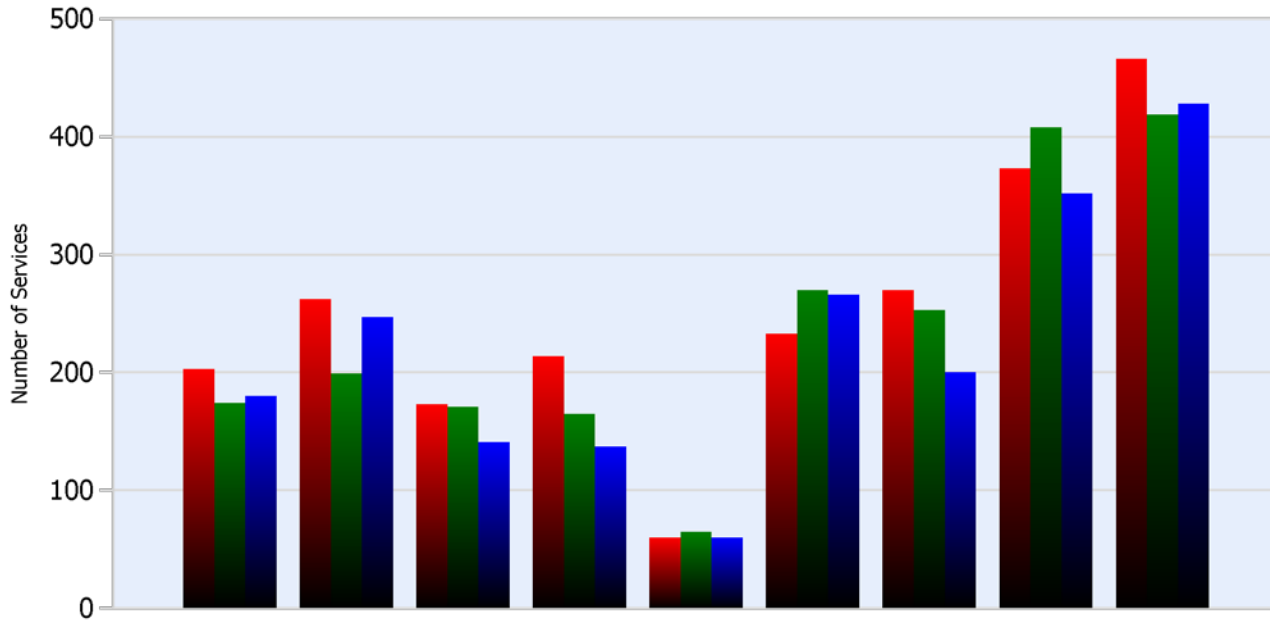




Quarter 4, 2018

Total Incidents Managed This Quarter: 5798

## HELP Services Provided



Month	Debris	Tire	Fuel	Mech	Jump	Traffic Ctrl	Tag	No Service	Other
<b>OCT</b>	203	262	173	214	60	233	270	373	466
<b>NOV</b>	174	199	171	165	65	270	253	408	419
<b>DEC</b>	180	247	141	137	60	266	200	352	428

## DMS Usage

	Oct	Nov	Dec	Quarter
Average % ON Time	37	38.6	40.8	38.8
Average Post Time	1.8	2.4	2.2	2.1
Avg Messages Per Sign	65.4	69.8	74.1	69.8
Total Messages Posted	2092	2234	2371	6697



Quarter 4, 2018

Total Incidents Managed This Quarter: 5798

## Events Affecting Traffic This Quarter:

- December 9, 2018 Incident # 203171 - 1402 - 1727. I81NB 66MM. Multi-vehicle crash with fatality,
- November 21, 2018 Incident # 202059- 1639 - 1846. I81 NB 30MM, Multi-vehicle crash with fatality.
- October 5, 2018 Incident # 198992. I75NB 136MM. Overturned tractor trailer.
- December 2, 2018 Incident # 202742 - 2046-0329. I75NB 136MM. Overturned tractor trailer
- December 4, 2018 Incident # 202830 -0836- 1510- I40EB 342MM. Overturned tractor trailer
- November 16, 2018 Incident # 201678 - 0716 - 0833. Overturned passenger vehicle.

## Travel Lane Blockage Events:

Roadway	Incident Count	Incident %
<b>I-140</b>	16	3.5
<b>I-26</b>	12	2.6
<b>I-275</b>	27	5.8
<b>I-40</b>	279	60.3
<b>I-640</b>	33	7.1
<b>I-75</b>	69	14.9
<b>I-81</b>	27	5.8