

FIGURE 1: PROJECT LOCATION AND TYPICAL SECTION MAPPING- Page 1

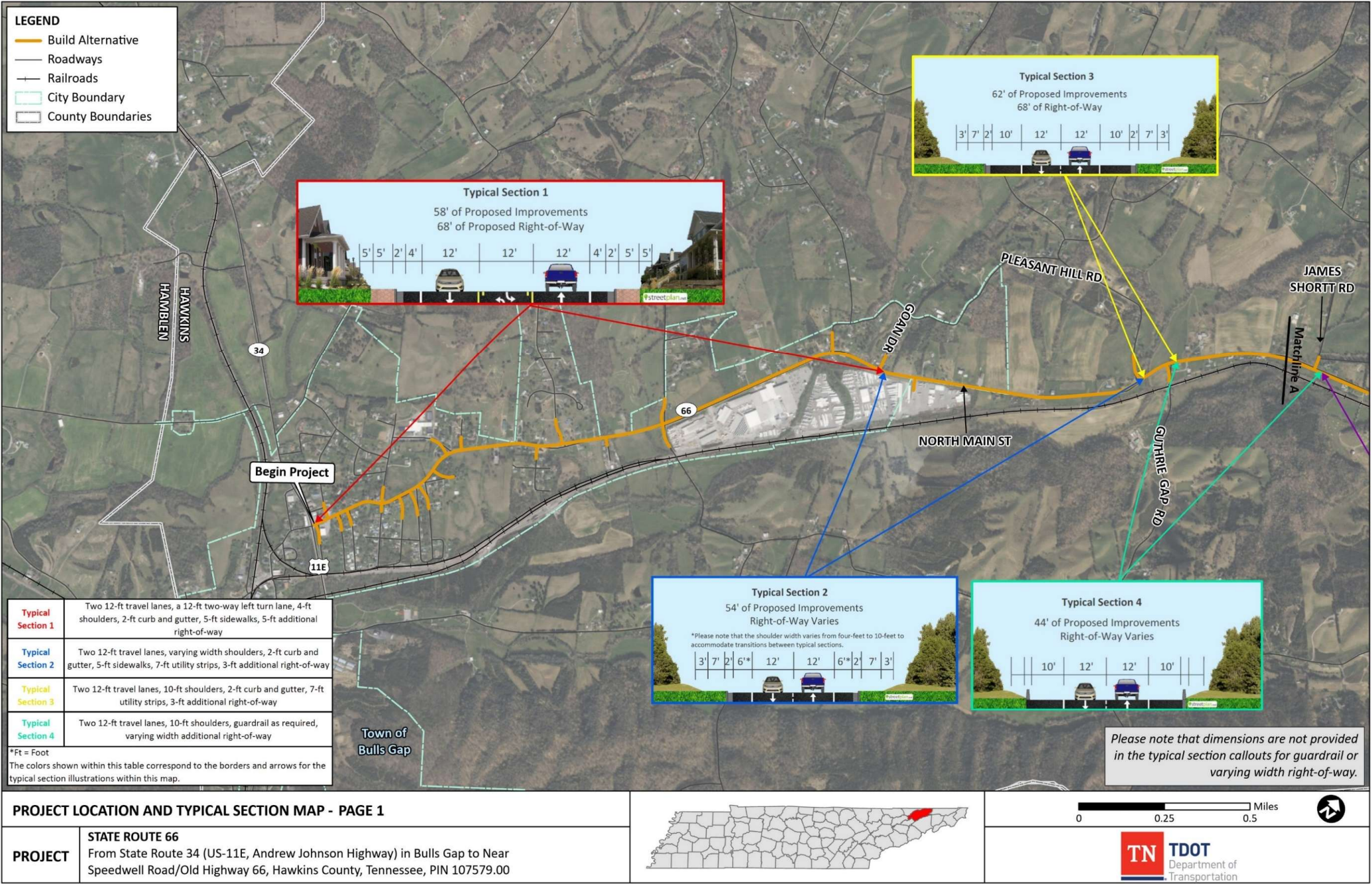
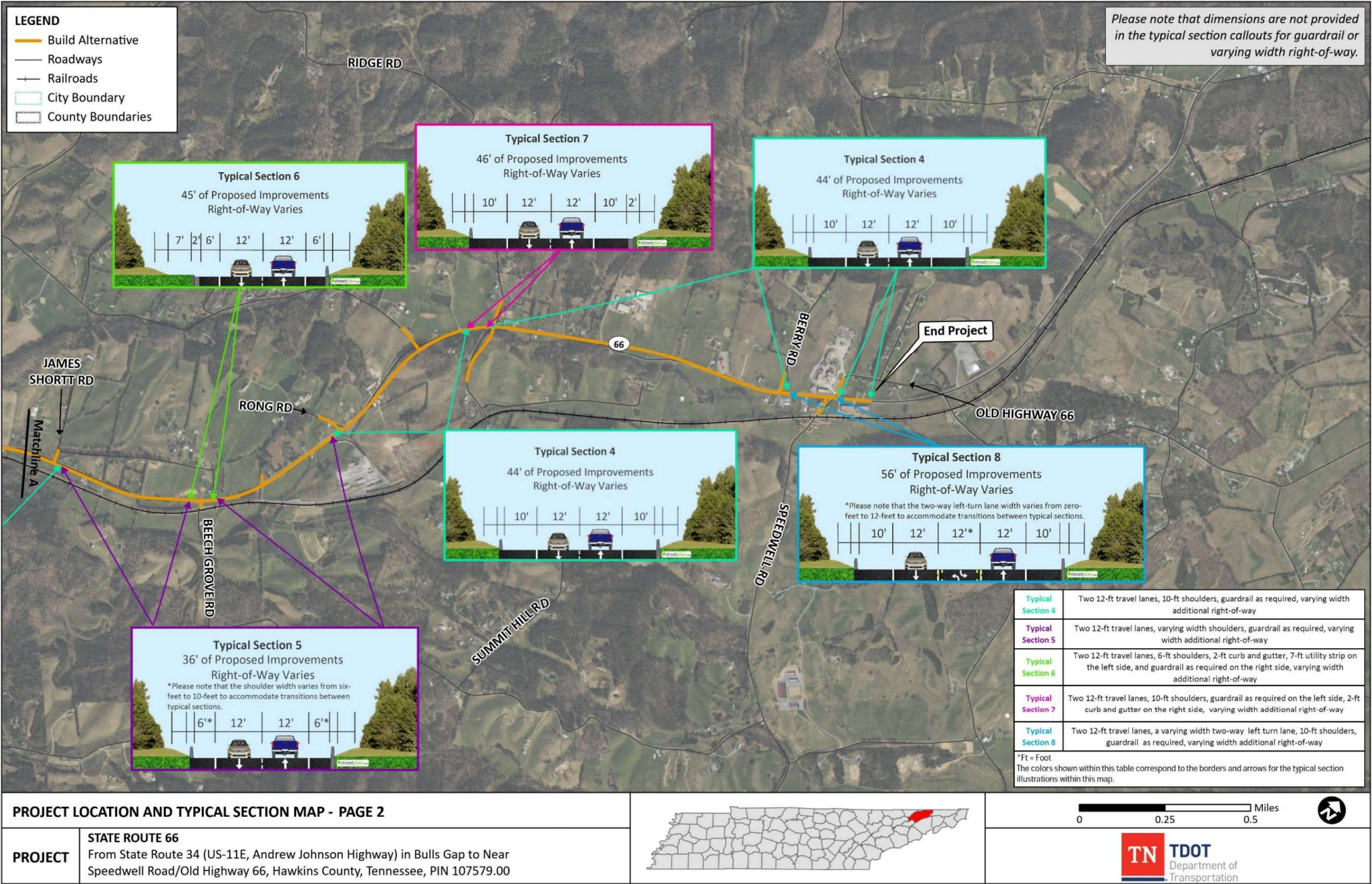


FIGURE 1 (Continued): PROJECT LOCATION AND TYPICAL SECTION MAPPING- Page 2



State Route 66 – TDOT PIN 107579.00
Website Updates 05.19.2025 – Notice of Availability and Public Hearing Notification

ENVIRONMENTAL IMPACTS

Impact Category (Resource)		No-Build Alternative	Build Alternative
Land Use	Direct Conversion of Land to a Transportation Use	No Effect	Approximately 102.52 acres of land would be converted to a transportation use. This amount may be reduced as the proposed project moves through the project development process.
	Existing Land Use	No Effect	The Build Alternative would be inconsistent with existing land uses; however, impacts are anticipated to be minimal since this conversion would occur predominantly along existing SR-66.
	Zoning	No Effect	The Build Alternative would be inconsistent with existing zoning in the Town of Bulls Gap; however, impacts are anticipated to be minimal since this conversion would occur predominantly along existing SR-66. Zoning data is not available for Hawkins County.
	Future Land Use	No Effect	The limits of the Town of Bulls Gap Urban Growth Area are unknown; therefore, impacts from the Build Alternative cannot be determined. Future land use data is not available for Hawkins County.
	Planned Development	No Effect	Two planned developments were identified within the vicinity of the Build Alternative: an industrial facility for Southern Waste Services and a 4.8-megawatt Holston Electric power generation plant under development at the Natural Gas Liquids Supply Company fractionation facility. Right-of-way and/or easements may be acquired from the parcels on which these developments are located; however, no impacts are anticipated to any structures, and access would be maintained during construction.
	Legislation, Plans, and Policies	No Effect	The Build Alternative would be consistent with stated infrastructure and economic development goals.
Farmland	Farm Size and Agricultural Employment	No Effect	The Build Alternative could reduce the overall amount of available farmland and reduce the need for agricultural industry employees. However, the amount of farmland to be converted may be reduced, and agriculture is not a predominant source of employment in Hawkins County. Therefore, impacts are anticipated to be minimal.
	Century Farms	No Effect	There is one recognized Century Farm that would be impacted by the Build Alternative.
	Prime Farmland	No Effect	Approximately 27.1 acres of prime, unique, and/or statewide or locally important farmland would be converted to a transportation use, which is approximately 0.52 percent of the total amount of prime, unique, and/or statewide or locally important farmland acreage found within Hawkins County.
	Impacts under the Farmland Policy Protection Act	No Effect	The Build Alternative received a Farmland Conversion Impact Rating of 109.7 points. Sites receiving a rating of less than 160 points are not given further consideration for protection and no additional sites need to be evaluated. The requirements of the Farmland Policy Protection Act have been fulfilled for the Build Alternative.
Transportation	Road Network	No Effect	The Build Alternative would widen the existing road and include minor horizontal and vertical alignment changes, primarily located in the Town of Bulls Gap, intended to meet current design standards.
	Bicycle and Pedestrian Facilities	The No-Build Alternative would not support the infrastructure goals of the legislation, plans, and policies.	The Build Alternative would include five-foot sidewalks in the Town of Bulls Gap and paved shoulders four- to ten-feet in width, which would provide additional accommodations for bicyclists on SR-66.
	Freight Rail	No Effect	No Effect
	Planned Roadway Projects in the Vicinity of the Build Alternative	No Effect	No Effect
Community Impact, Relocations, and	Relocations of Residents or Businesses	No Effect	There are 58 potential residential relocations. There are also seven business relocations. In the event of relocations, there may be issues finding suitable replacement housing for any potential residential relocations. An examination of the Hawkins County residential real estate market near the SR-66 project area indicates an inadequate supply of available residential property to satisfy the relocation requirements of

State Route 66 – TDOT PIN 107579.00
Website Updates 05.19.2025 – Notice of Availability and Public Hearing Notification

Impact Category (Resource)		No-Build Alternative	Build Alternative
Economic Resources			the 58 potential residential relocations. There is a larger inventory of homes in the Town of Rogersville (13 miles to the north), the City of Morristown (13 miles to the southwest), and the Town of Greeneville (17 miles to the southeast).
	Community Services and Facilities	No Effect	The Build Alternative would require partial acquisition from five community facilities (three churches, the East Tennessee Health Center, and Bulls Gap School) and the relocation of the East Tennessee Health Center. Due to the proximity of other medical facilities in the area, it is not anticipated that this relocation would have an adverse impact on the community. Access to all other community facilities would be maintained during construction.
	Community Stability and Cohesion	No Effect	Under the Build Alternative, impacts related to community cohesion have been determined to be moderate. The density and rural nature of the community following the relocation of residences and businesses would be consistent with the current density and rural nature of the existing community. Access to community facilities and services would be consistent with the current dispersed and rural nature of the existing community. It is unlikely that the Build Alternative would introduce a perceived barrier that discourages interaction across the roadway.
	Economic Conditions	No Effect	The Build Alternative is not anticipated to impact employment or unemployment rates in Hawkins County. The Build Alternative would support commuter/truck traffic on SR-66 and may encourage economic development.
Air Quality	Transportation Conformity	No Effect	The Build Alternative is located within Hawkins County, which is in attainment for all regulated criteria pollutants. Therefore, the Build Alternative is not subject to conformity.
	Mobile Source Air Toxics	No Effect	The Build Alternative qualifies as a “Project with Low Potential Mobile Source Air Toxic (MSAT) Effects” and is not predicted to create adverse Mobile Source Air Toxic effects.
	Construction Air Quality	No Effect	The Build Alternative may cause temporary generation of construction-related pollutant emissions.
Noise	Noise	No Effect	The Build Alternative is anticipated to impact five residential noise receivers. However, the Build Alternative is not predicted to cause a substantial increase in existing noise levels or exceed the FHWA Noise Abatement Criteria.
	Construction Noise	No Effect	Construction activities associated with the Build Alternative may generate intermittent and temporary noise above existing noise levels. The generated noise levels would depend on the types of equipment utilized, the duration of the activities, and the distances between construction activities and nearby land uses.
Historic Resources		No Effect	Two National Register of Historic Places eligible historic resources were identified within the limits of the Build Alternative (Shadowland Farm and Berry Farm). The Build Alternative would have no adverse effect to these resources.
Archaeological Resources		No Effect	The Build Alternative would have no effect to National Register of Historic Places listed/eligible archaeological resources.
Native American Consultation		No Effect	Native American Consultation was completed for the proposed project. None of the tribes indicated that the Build Alternative would result in adverse impacts; however, they did request to be contacted in the event of an inadvertent archaeological finding. Additionally, the Cherokee Nation requested to be a consulting party.
Section 4(f) Resources	Section 4(f) Resources – Historic Architecture	No Effect	Two historic architecture sites within the Area of Potential Effects of the Build Alternative were found eligible for the National Register of Historic Places, Shadowland Farm and Berry Farm. A Final Section 4(f) <i>De Minimis</i> Evaluation for impacts to these sites was signed by FHWA on March 12, 2025.
	Section 4(f) Resources – Archaeological	No Effect	No Effect
	Section 4(f) Resources – Recreational	No Effect	No Effect

State Route 66 – TDOT PIN 107579.00
Website Updates 05.19.2025 – Notice of Availability and Public Hearing Notification

Impact Category (Resource)		No-Build Alternative	Build Alternative
	Section 4(f) Resources – Wildlife and Waterfowl Refuges	No Effect	No Effect
Natural Resources	Perennial Streams	No Effect	Twenty-two perennial streams (approximately 2,340 linear feet) are located within the limits of the Build Alternative.
	Intermittent Streams	No Effect	Six intermittent streams (approximately 1,235 linear feet) are located within the limits of the Build Alternative.
	Wet Weather Conveyances	No Effect	Four wet weather conveyances (approximately 185 linear feet) are located within the limits of the Build Alternative.
	Ponds	No Effect	Nine ponds (approximately 0.33 acres) are located within the limits of the Build Alternative.
	Wetlands	No Effect	Sixteen wetlands (approximately 0.539 acres) are located within the limits of the Build Alternative.
	Water Quality	No Effect	One 303(d) listed stream, Whitehorn Creek, was found within the limits of the Build Alternative. Water quality may be impacted as a result of the Build Alternative.
	Threatened and Endangered Species	No Effect	Coordination with the U.S. Fish and Wildlife Service (USFWS) was completed, and there would be “No Effect” to any federally protected species. The USFWS and TWRA (Tennessee Wildlife Resources Agency (TWRA) requested the implementation of best management practices. TWRA requested that a site visit should be conducted by qualified TDOT personnel to ensure erosion control measures are followed. The Build Alternative is covered under the 2023 Memorandum of Agreement between TDOT, FHWA, and Tennessee Department of Environment and Conservation Division of Natural Areas (TDEC DNA); therefore, coordination with the TDEC DNA was not completed.
	Geology	No Effect	Construction of the Build Alternative may result in impacts to geology, such as impacts to drainage and ground and slope instability.
	Floodplains	No Effect	Portions of the Build Alternative (approximately 2.36 acres) are located in or near a Federal Emergency Management Agency defined floodplain; however, there is no detailed study.
Visual Impacts		No Effect	The Build Alternative would not impact visually sensitive resources. The Build Alternative would have a neutral effect on overall visual quality, and areas where roads were not previously visible but would be visible under the Build Alternative are minimal.
Hazardous Materials		No Effect	In 2012, four hazardous material sites with a “low” potential for encountering hazardous materials were identified within the limits of the Build Alternative. An updated 2024 hazardous materials desktop review identified 10 potential hazardous materials sites within the limits of the Build Alternative (two of which had been previously identified in the 2012 review).
Construction and Operations		No Effect	<p>Potential construction-related impacts are anticipated to be temporary and would not exceed the timeframe during which active construction of the Build Alternative would take place.</p> <p>As it relates to operations, the amount of fuel required to construct a highway project of this type is substantial, but temporary in nature, and generally leads to reduced operating costs once the proposed project is completed. Given that the Build Alternative is predominantly widening existing SR-66, it is not anticipated that fuel impacts related to Build Alternative would be more than the No-Build Alternative post construction.</p>