

Community Briefing

SR 162/PELLISSIPPI PARKWAY EXTENSION BLOUNT COUNTY, TENNESSEE



Presented by the Tennessee Department of Transportation

May 30, 2013



What is on the Agenda Tonight?

- ◆ 5:00 PM – Briefing Begins
 - Sign in and pick up briefing materials
 - View this brief presentation in the sanctuary
 - Visit the displays of the proposed avoidance shifts in breakout rooms
 - Talk with a TDOT representative
 - Fill out a comment card and leave it on the table (or mail or email it by **June 10, 2013**).
- ◆ 7:00 PM – Briefing Ends

Why is TDOT Having this Briefing?

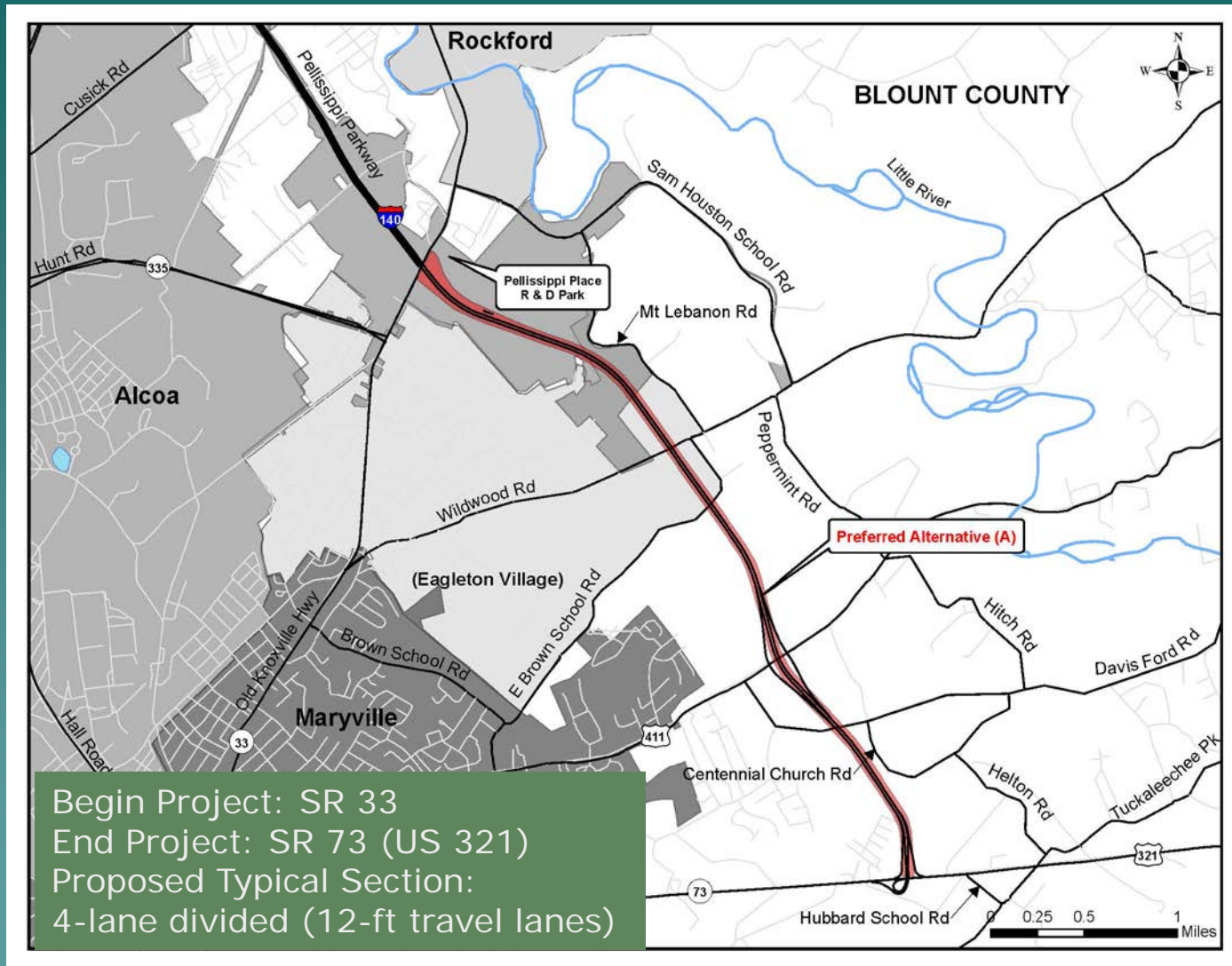
- ◆ To explain recent project activities related to the Preferred Alternative
- ◆ To discuss why a minor shift in the alignment of the Preferred Alternative is needed
- ◆ To share the schedule for completing the Final Environmental Impact Statement (FEIS)
- ◆ To answer your questions



What Has been Happening Since 2010?

- ◆ **July 2010** – TDOT held a Public Hearing on the Draft Environmental Impact Statement (DEIS).
- ◆ **September 2010 through 2011** - TDOT and FHWA reviewed and considered the comments received.
- ◆ **June 2012** – TDOT announced that the DEIS Alternative A was selected as the Preferred Alternative.
- ◆ **Since July 2012** – Updates of technical studies and preparation of the FEIS are underway.

What is the Preferred Alternative?



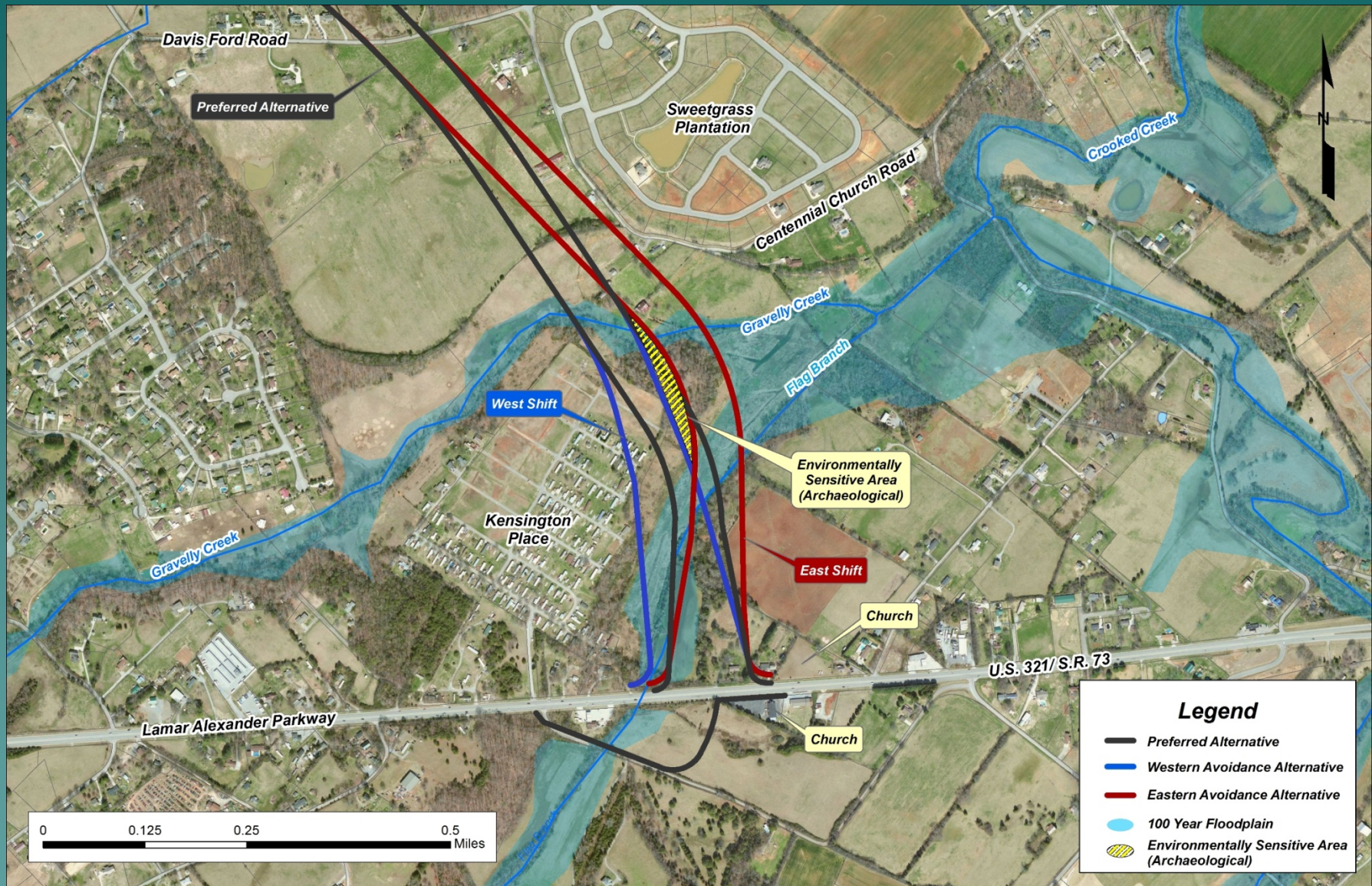
What Technical Studies are Underway?

- ◆ **Hazardous Materials** – Phase II Contamination Assessment for one site. Nothing of concern was found.
- ◆ **Noise** – Updated noise study to comply with 2011 TDOT Noise Policy.
- ◆ **Ecology Report** – Updated to address recently identified federally listed species.
- ◆ **Safety** – Updated to analyze accidents during 2008, 2009 and 2010.
- ◆ **Archaeology** – Phase II investigations of five sites. One site was determined to be significant enough to be eligible for the National Register. TDOT must avoid that site.

What is TDOT Doing to Avoid the Environmentally Sensitive Site?

- ◆ **Examine two potential shifts in the alignment, approximately between Brown School Road and US 321/SR 73:**
 - ◆ **East Shift** -- moves the alignment 300 feet to the east
 - or
 - ◆ **West Shift** -- moves the alignment 150 feet to the west

Where are the Avoidance Shifts?



What does the East Shift Affect?

- ◆ Reduces amount of property acquisition by 0.9 acre.
- ◆ Takes 1 additional residence, 5 barns, and agricultural outbuildings
- ◆ Affects 3 additional noise receptors. Noise receptors are representative locations of noise sensitive areas within the project area.
- ◆ Reduces amount of impact on floodplains but increases impact on wetlands
- ◆ Moves out of Kensington Place mobile home community

What does the West Shift Affect?

- ◆ Increase amount of property acquisition by 3.6 acres
- ◆ Increases number of impacts in Kensington Place Mobile Home Community:
 - ◆ Takes six mobile homes
 - ◆ Acquires 2.3 additional acres
 - ◆ Increases number of substantial noise impacts; eligible for a noise wall that would mitigate the impacts.
- ◆ Increases impacts to streams, floodplains and wetlands

How do the Avoidance Shifts Compare with the Preferred Alternative?

Resources Affected	Preferred Alt	East Shift	West Shift
New ROW affected	197 ac.	-09 ac.	+3.6 ac.
Additional residences taken	5	+1	+6
Additional farmlands affected	134 ac.	+3.1 ac.	+1.7 ac.
Eligible archaeological sites	1	No sites	No sites
Noise receptors affected	151	+3	+2
Additional floodplain impact	6.9 ac.	-0.9 ac.	+2.1 ac.

How do the Avoidance Shifts Compare with the Preferred Alternative?

Resources Affected	Preferred Alt	East Shift	West Shift
Additional stream impacts	1,526 ft.	+15 ft.	+789 ft.
Additional wetland impact	4.3 ac.	+2.1 ac.	+3.7 ac.
<i>Impacts to Kensington Place mobile home community:</i>			
Property & Residential Takes	1.5 ac. ROW, no homes	No takes	3.8 ac. ROW, 6 homes
Environmental Justice	No impact	No impact	No impact
Noise - approaching National Ambient Criteria	13, not eligible for noise walls*	2, not eligible for noise walls*	23, potentially eligible for noise wall*
<i>*Eligibility for noise walls will be determined during final design phase.</i>			

How will TDOT Decide which Avoidance Shift will be Included in the Preferred Alternative?

- ◆ Consider the results of the environmental screening

and

- ◆ Consider the comments of affected property owners, residents and business

NEXT PROJECT STEPS

Finalize the Alignment Shift



Complete Technical Study Reports



Prepare Final EIS (FEIS)



Issue Record of Decision



Request Injunction be Lifted



Preliminary and Final Design

* Right-of-Way Acquisition and Construction
are subject to annual funding by the
Tennessee General Assembly

Project Schedule

- ◆ Select alignment shift – *June 2013*
- ◆ Complete Technical Studies and Draft FEIS – *June through July 2013*
- ◆ Submit Draft FEIS to FHWA– *August 2013*
- ◆ FHWA reviews and TDOT edits FEIS as necessary – *August through October 2013*
- ◆ FHWA issues Final EIS – *October 2013*
- ◆ FHWA issues Record of Decision – *December 2013*

To Provide a Comment

- ◆ Turn in your completed comment form or written statement tonight
- ◆ By **June 10, 2013:**
 - **Email** your comments to **SkinnerN@pbworld.com**
 - **Mail** comments to:

Pellissippi Parkway Extension Comments
Parsons Brinckerhoff, Inc.
1900 Church Street, Suite 400
Nashville, TN 37203

For More Information

Visit the website at:

www.tdot.state.tn.us/pellissippi/

Or contact:

Danny Oliver, P.E., R.L.S.
Director of Project Development
TDOT - Region 1
(865) 594-2400