

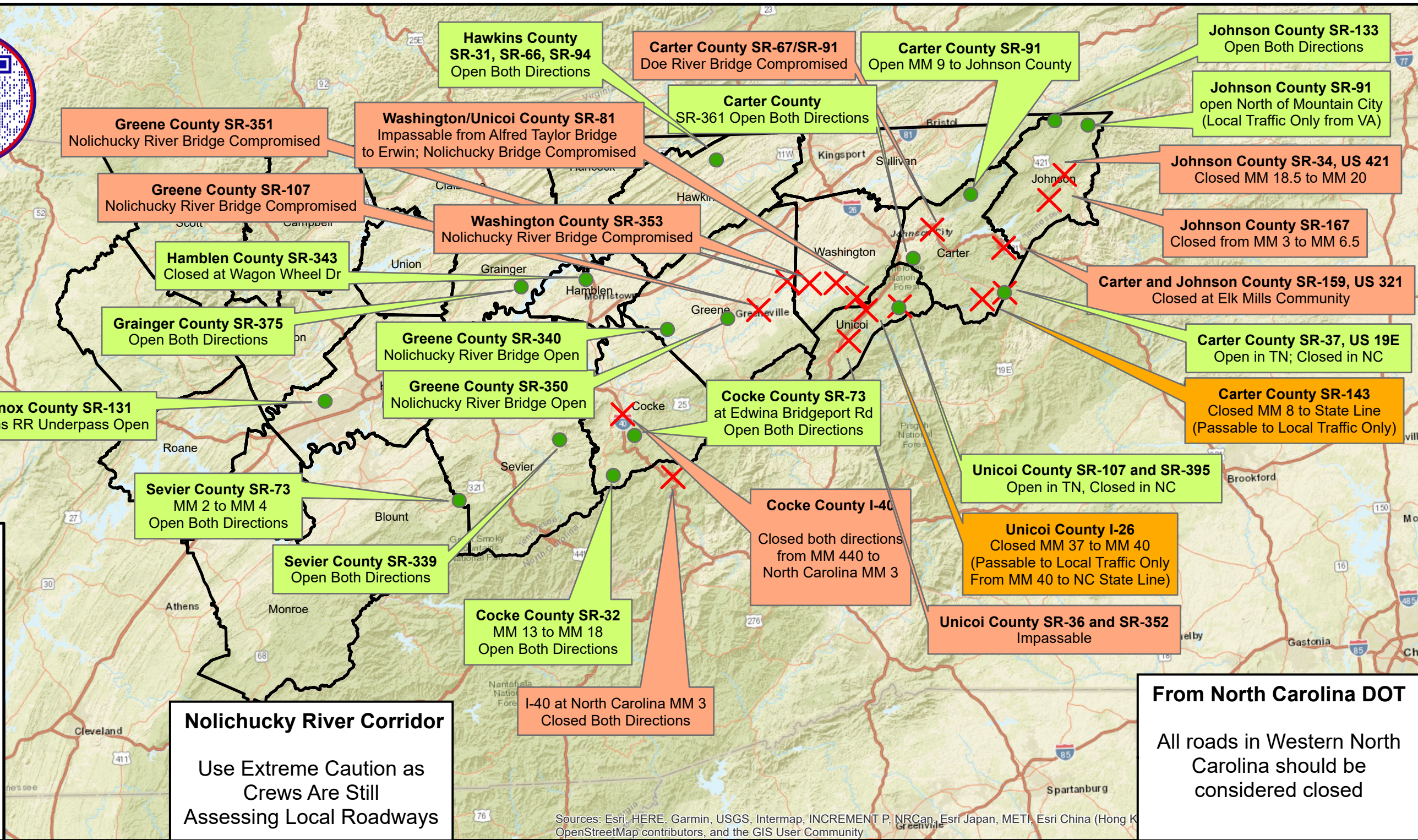
× Route/Bridge Closed

● Route/Bridge Open

Orange Box Interstate/State Route Closure

Yellow Box Passable (Local Traffic Only)

Green Box State Route Open



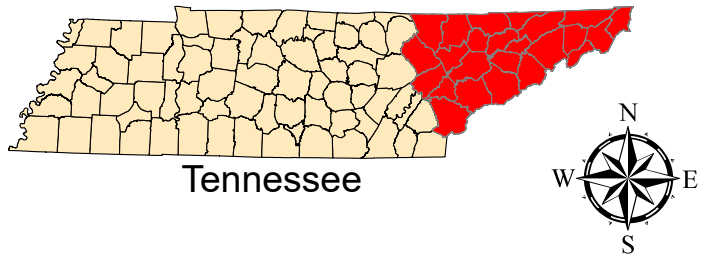
Nolichucky River Corridor
Use Extreme Caution as Crews Are Still Assessing Local Roadways

From North Carolina DOT
All roads in Western North Carolina should be considered closed

Sources: Esri, HERE, Garmin, USGS, Intermap, INCREMENT P, NRCan, Esri Japan, METI, Esri China (Hong K), OpenStreetMap contributors, and the GIS User Community







TDOT TRAFFIC OPERATIONS REGION 1



East Tennessee Roadway Closures

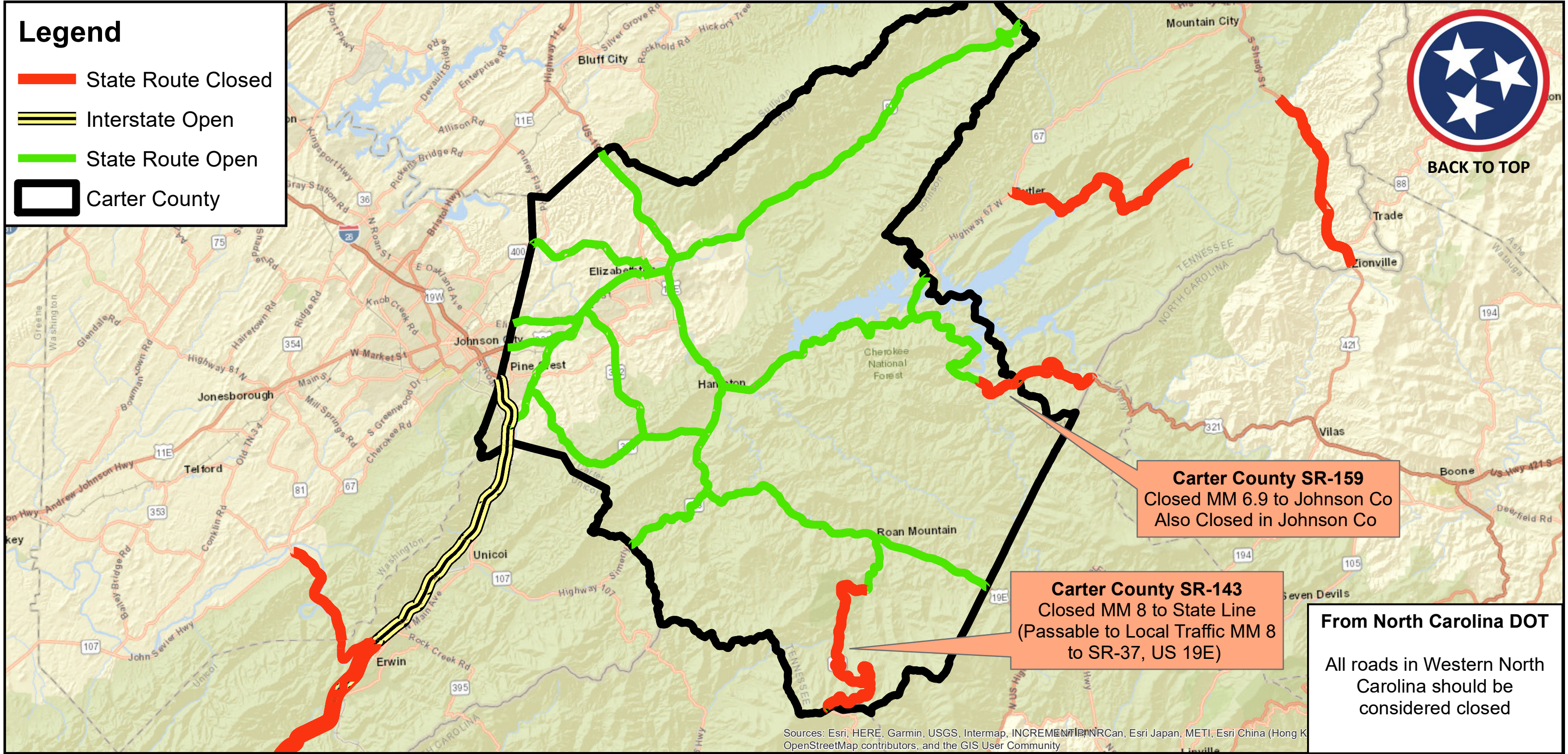
Source: TDOT GIS

Legend

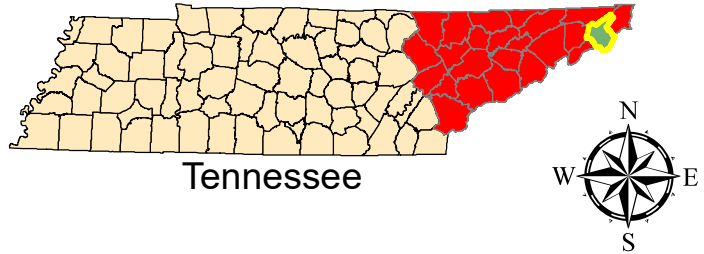
-  State Route Closed
-  Interstate Open
-  State Route Open
-  Carter County



[BACK TO TOP](#)



TDOT TRAFFIC OPERATIONS
REGION 1

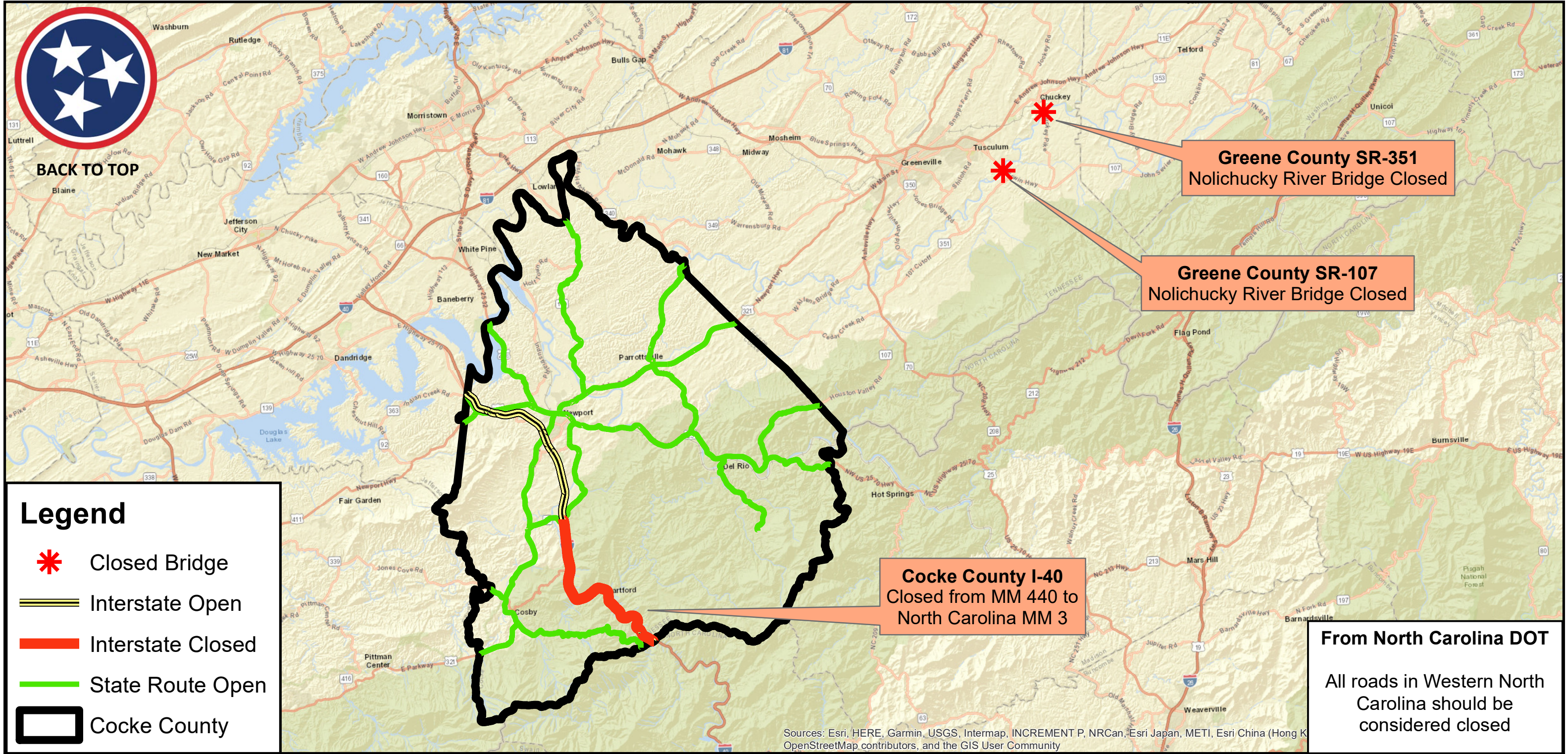


Carter County State Road System






Source: TDOT GIS



BACK TO TOP



Legend

-  Closed Bridge
-  Interstate Open
-  Interstate Closed
-  State Route Open
-  Coker County

Coker County I-40
Closed from MM 440 to
North Carolina MM 3

Greene County SR-351
Nolanducky River Bridge Closed

Greene County SR-107
Nolanducky River Bridge Closed

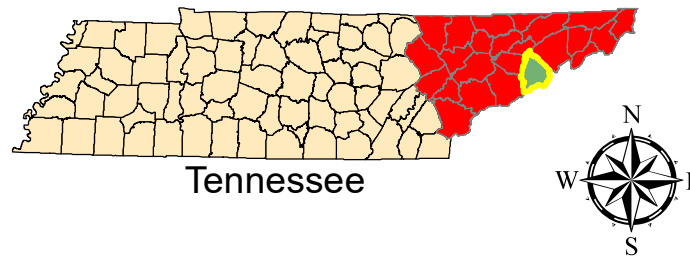
From North Carolina DOT

All roads in Western North
Carolina should be
considered closed

Sources: Esri, HERE, Garmin, USGS, Intermap, INCREMENT P, NRCan, Esri Japan, METI, Esri China (Hong K
OpenStreetMap contributors, and the GIS User Community



TDOT TRAFFIC OPERATIONS
REGION 1



Coker County State Road System

Source: TDOT GIS



[BACK TO TOP](#)





Greene County SR-107
Nolichucky River Bridge Closed

Greene County SR-351
Nolichucky River Bridge Closed

Washington County SR-353
Nolichucky River Bridge Closed

Washington/Unicoi SR-81
Nolichucky River Bridge Closed near SR-107

Legend

-  Interstate Open
-  State Route Open
-  Closed Bridge
-  Greene County

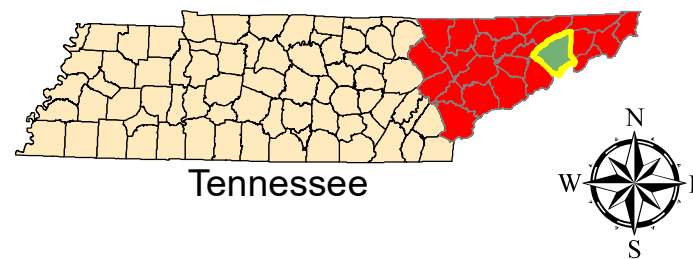
From North Carolina DOT

All roads in Western North Carolina should be considered closed

Sources: Esri, HERE, Garmin, USGS, Intermap, INCREMENT P, NRCan, Esri Japan, METI, Esri China (Hong K), OpenStreetMap contributors, and the GIS User Community



TDOT TRAFFIC OPERATIONS
REGION 1

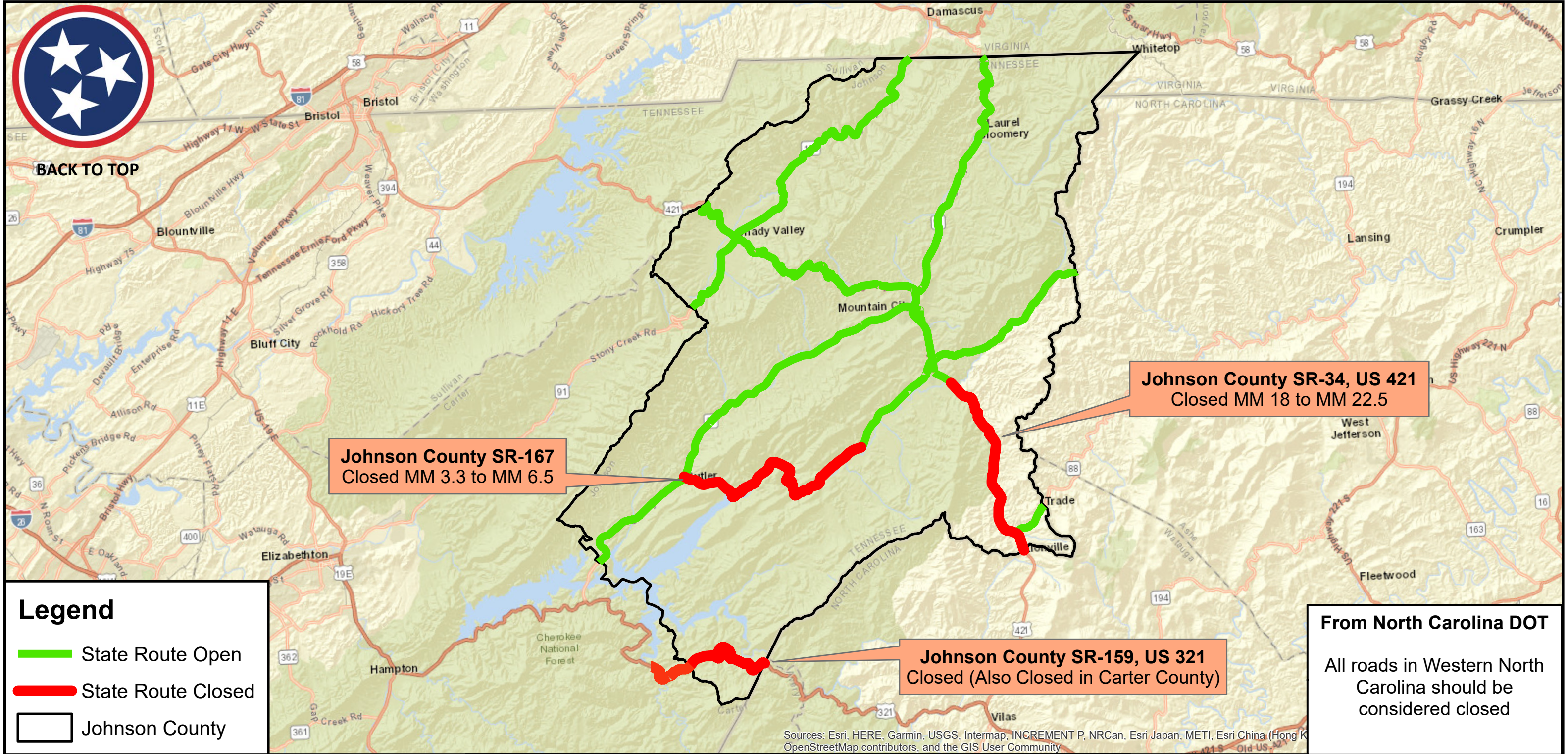


Greene County State Road System

Source: TDOT GIS



BACK TO TOP



Johnson County SR-167
Closed MM 3.3 to MM 6.5

Johnson County SR-34, US 421
Closed MM 18 to MM 22.5

Johnson County SR-159, US 321
Closed (Also Closed in Carter County)

From North Carolina DOT
All roads in Western North Carolina should be considered closed

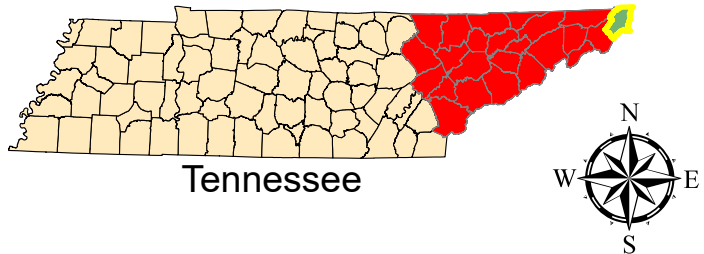
Legend

- State Route Open
- State Route Closed
- Johnson County

Sources: Esri, HERE, Garmin, USGS, Intermap, INCREMENT P, NRCan, Esri Japan, METI, Esri China (Hong K), OpenStreetMap contributors, and the GIS User Community



PREPARED BY:
TDOT TRAFFIC OPERATIONS
REGION 1



Johnson County State Route Status

Source: TDOT GIS

**Greene/Washington County
Closed Nolichucky River Bridges**

Greene SR-107
Greene SR-351
Washington SR-353

Unicoi County SR-81
Closed from I-26 to Washington County
(Also Closed in Washington County to SR-107)

Unicoi County I-26
Closed from Exit 37 to Exit 40
(Passable to Local Traffic MM 40
to NC State Line)

Unicoi County SR-36
Closed from I-26 to State Line



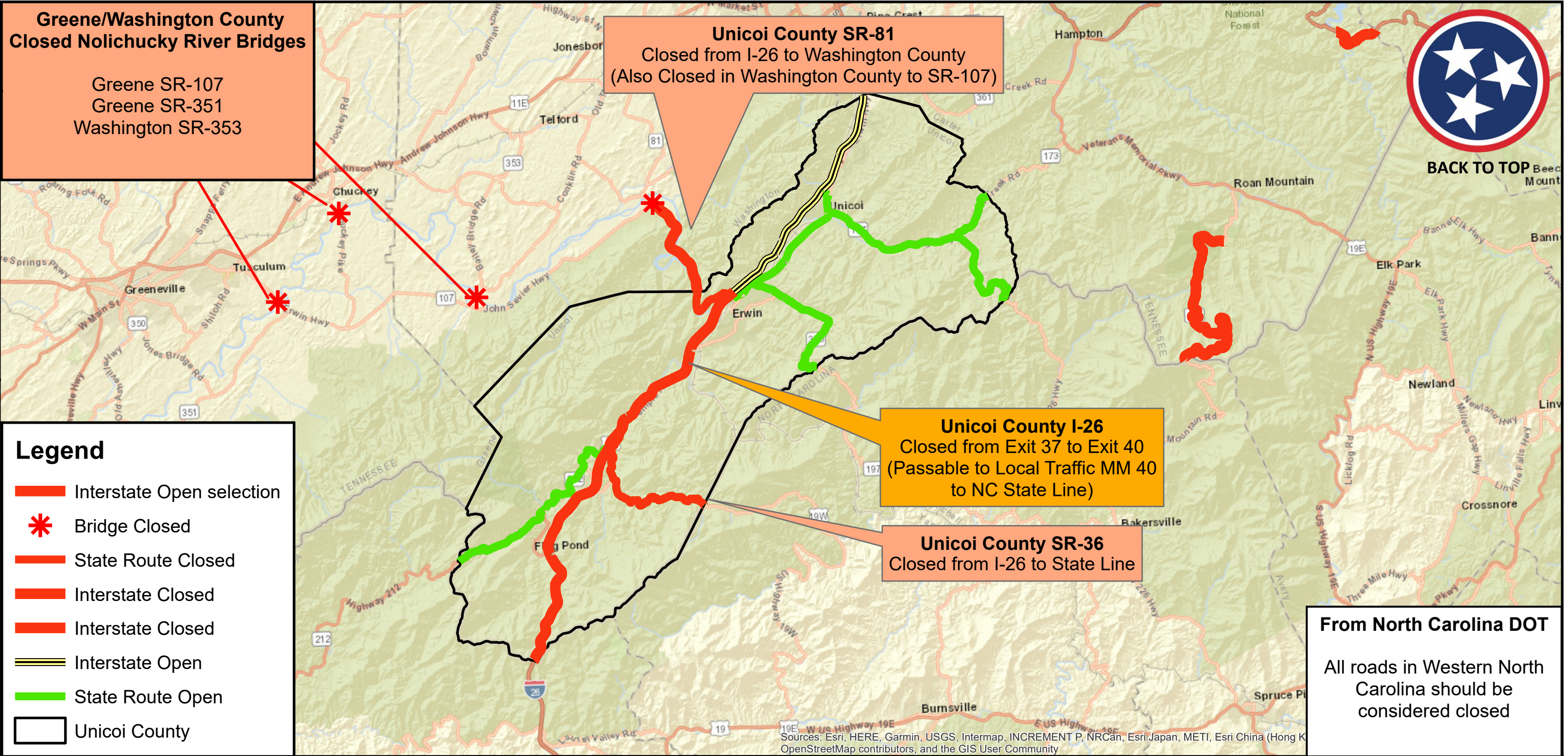
BACK TO TOP

Legend

- Interstate Open selection
- Bridge Closed
- State Route Closed
- Interstate Closed
- Interstate Closed
- Interstate Open
- State Route Open
- Unicoi County

From North Carolina DOT

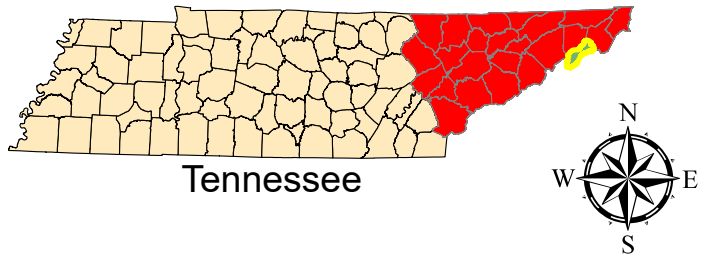
All roads in Western North Carolina should be considered closed



Sources: Esri, HERE, Garmin, USGS, Intermap, INCREMENT P, NRCan, Esri Japan, METI, Esri China (Hong K), OpenStreetMap contributors, and the GIS User Community



TDOT TRAFFIC OPERATIONS
REGION 1



**Unicoi County
State Road System**

Source: TDOT GIS



[BACK TO TOP](#)

**Greene/Washington County
Closed Nolichucky River Bridges**

Greene SR-107
Greene SR-351
Washington SR-353

**Washington/Unicoi SR-81
Nolichucky River Bridge Closed near SR-107**

**Washington County SR-81
Closed from Unicoi County to SR-107
(Also Closed in Unicoi County)**

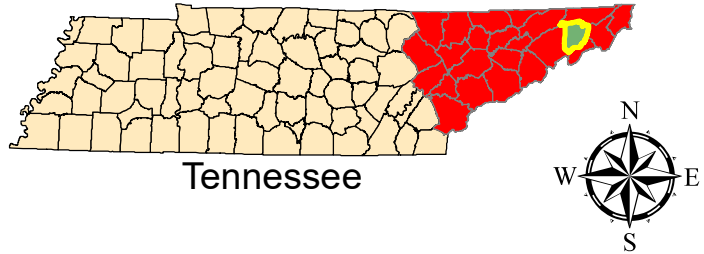
Legend

- Interstate Open
- State Route Open
- State Route Closure
- Bridge Closure
- Washington County

Sources: Esri, HERE, Garmin, USGS, Intermap, INCREMENT P, NRCan, Esri Japan, METI, Esri China (Hong Kong), Esri Korea, Esri (Thailand), NGCC, (c) OpenStreetMap contributors, and the GIS User Community



TDOT TRAFFIC OPERATIONS
REGION 1



Washington County State Road System

Source: TDOT GIS