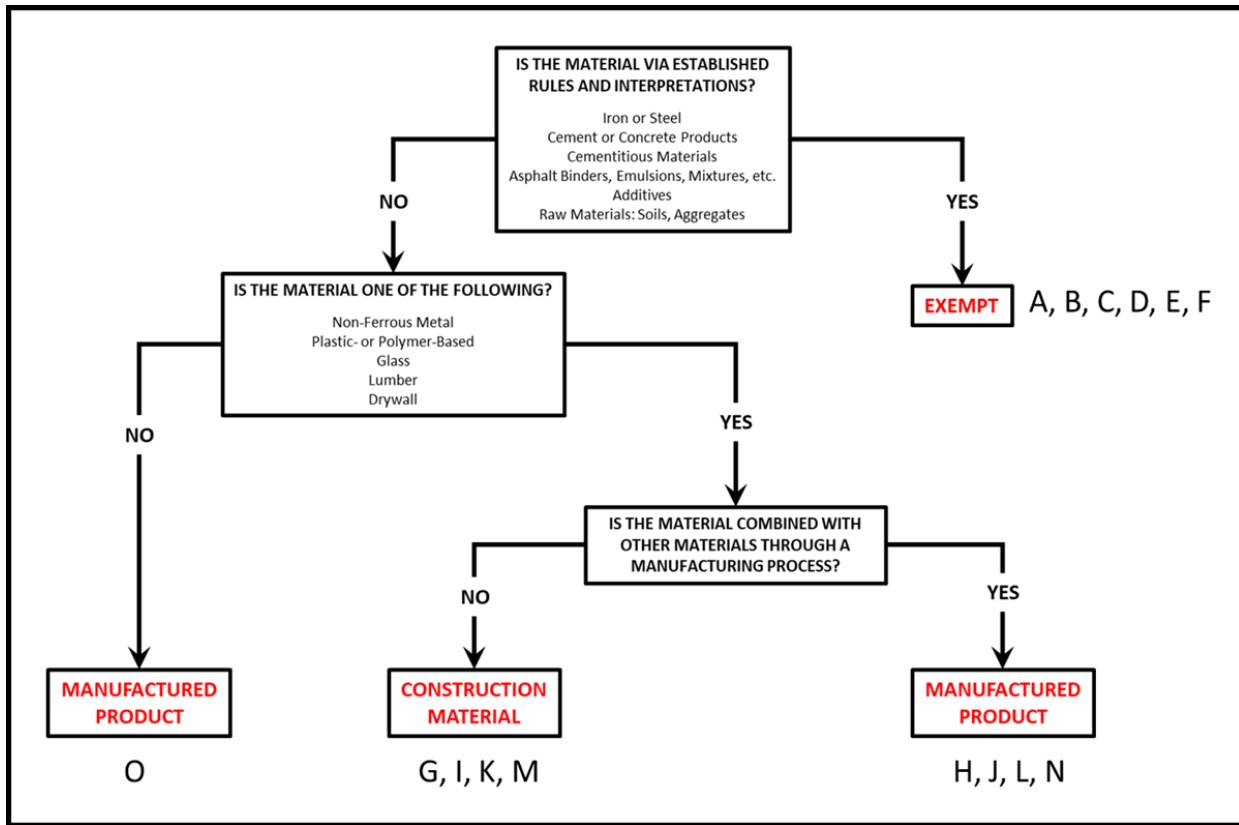


**Appendix A: Flowchart Establishing the Rules and Interpretations**



Material Type	BABA Status	Reference	Notes
A. Iron or Steel	No change	BAA 1978	Provide Certification per SP106A
B. Cement or Concrete Products	Exempt	BABA Mfg. Products	No action needed
C. Cementitious Materials	Exempt	BABA Guidance	No action needed
D. Asphalt Binders, Emulsions, Mixtures	Exempt	BABA Guidance	No action needed
E. Soils or Aggregates	Exempt	BABA Guidance	No action needed
F. Additives	Exempt	BABA Guidance	No action needed
G. Non-Ferrous Metal - primarily	Construction Material	BABA Guidance	Provide Certification per SP106BA
H. Non-Ferrous Metal - with other mtl's	Manufactured Material	BABA Mfg. Products	No action needed
I. Plastic or Polymer Based - primarily	Construction Material	BABA Guidance	Provide Certification per SP106BA
J. Plastic or Polymer Based - with other mtl's	Manufactured Material	BABA Mfg. Products	No action needed
K. Glass - primarily	Construction Material	BABA Guidance	Provide Certification per SP106BA
L. Glass - combined with other mtl's	Manufactured Material	BABA Mfg. Products	No action needed
M. Lumber - primarily	Construction Material	BABA Guidance	Provide Certification per SP106BA
N. Lumber - combined with other mtl's	Manufactured Material	BABA Mfg. Products	No action needed
O. Manufactured from multiple materials	Manufactured Material	BABA Guidance	No action needed
P. Project Specific	Material Dependent	Applicable to Material	May be subject to BABA 2022
Q. Organic or Natural Material	Exempt	Dept. of Agriculture	No action needed
R. Administrative	Administrative	--	No action needed
S. Temporary Items (tools, equipment, supplies)	Exempt	BABA Guidance	No action needed