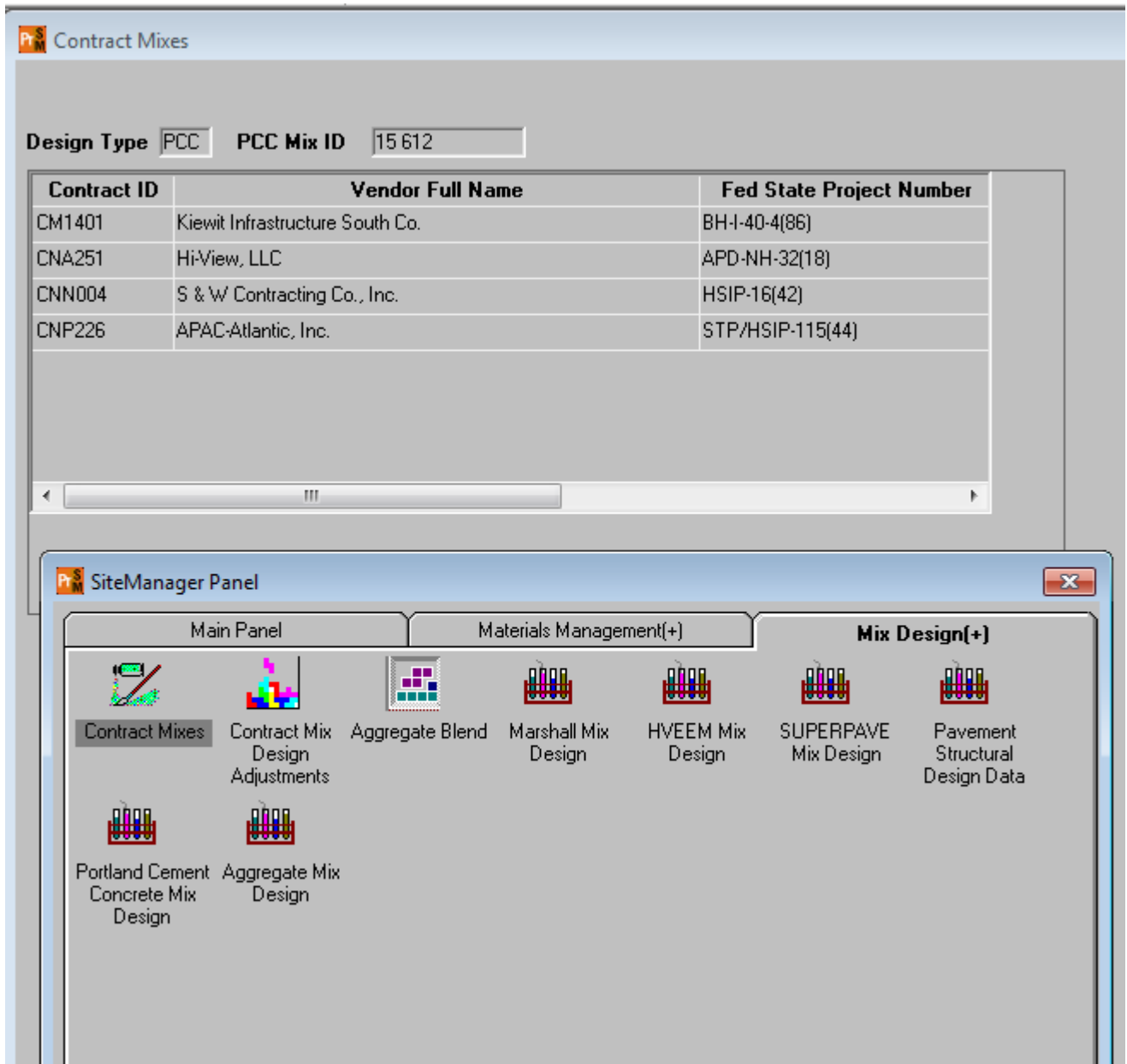


Rev. 4/5/2017

Several roles have rights to view the Contract mixes window in Mix designs. You will select design type PCC, then design number and click OK at bottom of window. You will see the window below showing all contracts linked to a design. NOTE: an older design (2014) may have active contracts not listed in this window.



BOE has a report (RR043) that will show all designs linked to a specific contract.



BusinessObjects 3.1

Home | Document List | Open | Send To | Dashboards

View - Mix Designs - Concrete Mixture Design RR043

Enter prompt values.

Contract/Mix ID

Select Contract ID:

CNP190

Select Mix ID:

13 013
13 016
15 425

This is what the report will look like:

Print Date: 04/18/2016
JJ01563

STATE OF TENNESSEE
DEPARTMENT OF TRANSPORTATION
Concrete Mixture Design Report



Parameters: Contract ID: CNM950
Mix ID: 15 628

Contract ID: CNM950 Contractor: Bell & Associates Construction, L.P. Letting Date: 12/06/2013
Project: 75002-3285-14 Project Reference Number: NH-1(297) Date Issued: 12/28/2015
County: RUTHERFORD Region: 3

MATERIALS AND PRODUCERS

CONCRETE PRODUCER		IMI - MURFREESBORO		MURFREESBORO, TN
CEMENTITIOUS MATERIALS	CEMENT	TYPE DOMESTIC (TYPE I)	G=3.15	CEMEX - LOUISVILLE
	SUPPLEMENTARY CM	FLY ASH CLASS	G=	
AGGREGATE	COARSE	CRUSH STONE #57	G=2.68	ROGERS GROUP - MURFREESBORO AGGREGATE
	FINE	MANUFACTURED SAND (FM=)	G=	PINE BLUFF SAND & GRAVEL - NASHVILLE
CHEMICAL ADMIXTURES	1. AIR ENTRAINER	NATURAL SAND (FM=2.61)	G=2.61	
	2. REDUCER	Retarder to be used when temperature is 85 degrees F or higher.		
3. REDUCER/RETARDER	Admixture dosage shall be in accordance with manufacturer's recommendations.			
4. ACCELERATOR	MASTERAIR AE 200 (MICRO-AIR)			
5. HIGH RANGE REDUCER	MASTER POLYHEED 997 OR POLYHEED 997			
6. OTHER	MASTERSET DELVO OR DELVO STABILIZER			
	MASTERSET AC 534 OR POZZOLITH NC 534			

MIX DESIGN DATA

CLASS OF CONCRETE:	CLASS A, CONCRETE MIX		
CEMENT	ib/yd ³	THEORETICAL UNIT WEIGHT, PCF	143.4
FLY ASH	565	% FA VOLUME OF TOTAL AGGREGATE	41.4
GGBFS		DESIGN W/CM RATIO	0.44
SILICA FUME		DESIGN AIR CONTENT	6%
CRUSH STONE #57	1800	REQUIRED COMPRESSIVE STRENGTH 28 DAYS, PSI	3000
NATURAL SAND	1236	REQUIRED COMPRESSIVE STRENGTH 28 DAYS, PSI	3000
MANUFACTURED SAND	250	MIX ID	15 628
WATER	1, 2, 3, 4		
CHEMICAL ADMIXTURES			

Remarks:

Design as specified in TDOT Sections 501, 504, 515, 516, 701, 702, 703, 711, or as applicable. Manufactured sand shall not be used in riding surfaces/Issued By: _____
Mix designs expire 6 months after they are issued, if not poured on a project.

NEIGHBORS, AMANDA

Headquarters (Materials & Tests)

