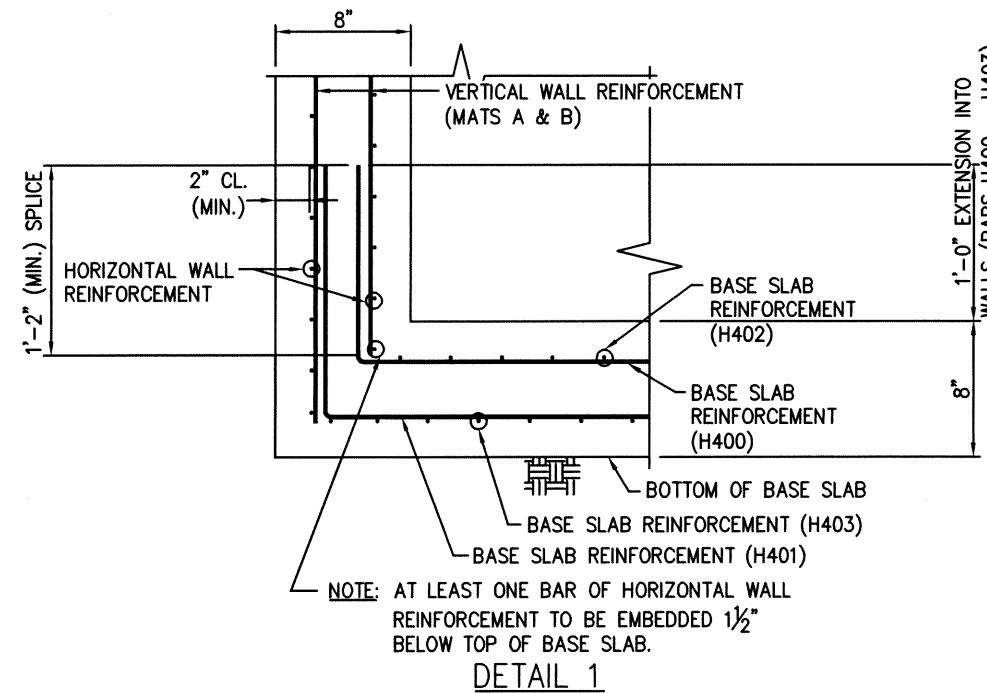
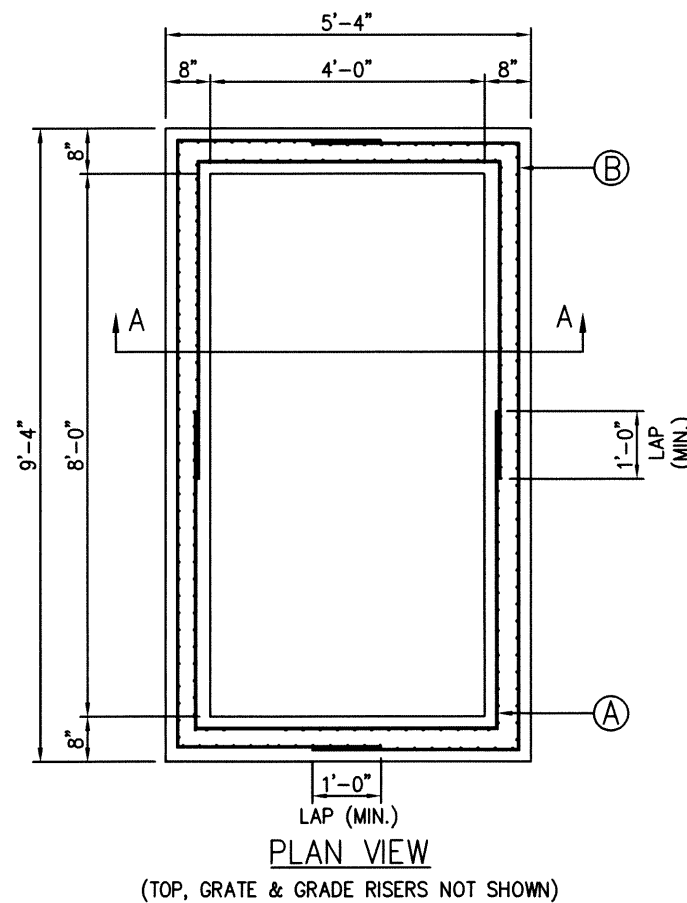
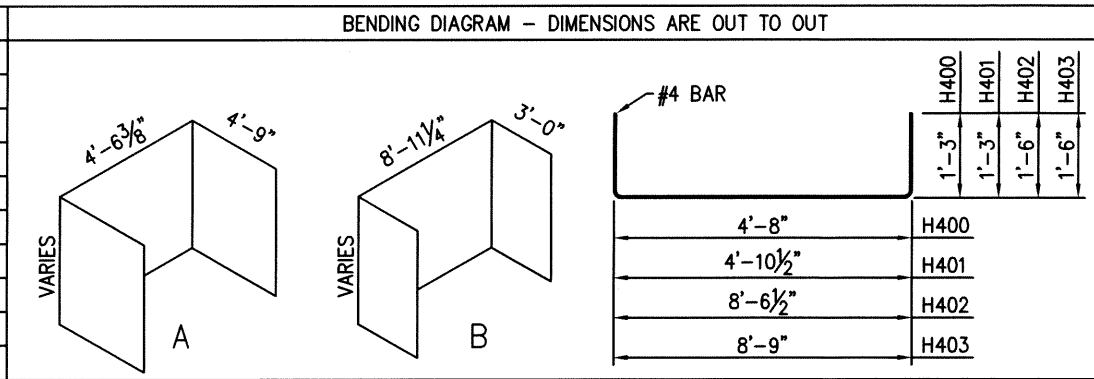


REINFORCING STEEL SCHEDULE

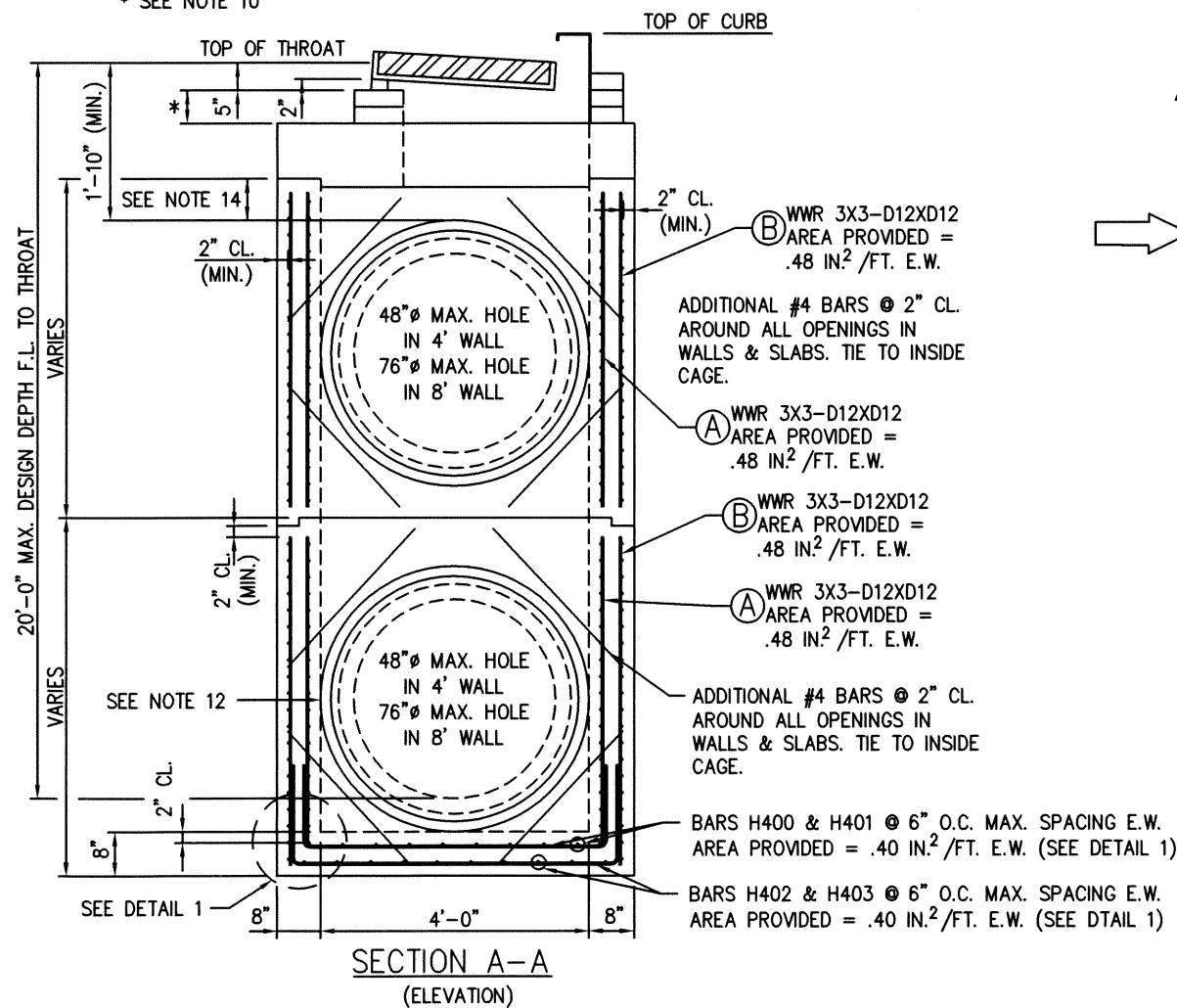
MARK	NO. REQ'D.	LENGTH	TYPE
A	2	SEE DIAGRAM	BENT
B	2	SEE DIAGRAM	BENT
H400	18	SEE DIAGRAM	BENT
H401	19	SEE DIAGRAM	BENT
H402	10	SEE DIAGRAM	BENT
H403	11	SEE DIAGRAM	BENT



NOTE: WALL & BASE SLAB POURED MONOLITHICALLY.

- GENERAL NOTES:
- DESIGN LOADING: HL-93 LIVE LOAD
 - THIS DRAWING TO BE USED AS AN ALTERNATE REINFORCEMENT DESIGN FOR THE FOLLOWING TDOT STANDARDS: D-CB-16S, D-CB-27S, D-CB-29SB & D-CB-45S. FOR DETAILS NOT COVERED BY THIS DRAWING, REFERENCE THE ABOVE LISTED STANDARD DRAWINGS.
 - PRECAST CONCRETE CATCH BASINS SHALL BE CONSTRUCTED TO COMPLY WITH ASTM C913.
 - THE FOLLOWING MATERIAL PROPERTIES ARE REQUIRED FOR PRECAST STRUCTURES:
 CONCRETE: $f'_c = 5,000$ PSI AT 28 DAYS
 REINFORCING STEEL: ASTM A615, $F_y = 60,000$ PSI
 WELDED WIRE REINFORCEMENT: ASTM A1064, WITH A MINIMUM YIELD STRENGTH OF 70,000 PSI. THE MINIMUM SPLICE LENGTH IS TO BE 12 INCHES UNLESS NOTED OTHERWISE. ALL REINFORCING STEEL TO BE INSTALLED AS DETAILED ON THIS DRAWING.
 - APPROPRIATE SIZING AND LOCATION OF LIFTING DEVICES SHALL BE THE RESPONSIBILITY OF THE FABRICATOR.
 - THE CONTRACTOR IS TO PATCH ALL LIFTING DEVICE HOLES WITH GROUT AND PLACE A MINIMUM OF 1 INCH OF COVER OVER THE HARDWARE OF THESE DEVICES ON BOTH TOP AND BOTTOM SURFACES.
 - SEE STANDARD: D-CBB-16S, D-CBB-27S, D-CBB-29SB OR D-CBB-45S FOR CASTING DETAILS.
 - CUT OUT HOLES BASED ON REINFORCED CONCRETE PIPE WITH WALL TYPE "B". HOLES TO BE FORMED IN ORDER TO OBTAIN A SMOOTH EDGED HOLE. SCORED OR ETCHED HOLES WITH REINFORCING LEFT UN CUT WILL NOT BE PERMITTED.
 - ALL FLEXIBLE PIPE MATERIALS REQUIRE GASKET. SEE STANDARD D-PB-2.
 - THIS DIMENSION MAY VARY FROM A MINIMUM OF 0 INCHES TO A MAXIMUM OF 24 INCHES AS LONG AS 23 INCHES IS SATISFIED. THE CONTRACTOR HAS THE OPTION OF USING BRICK OR STANDARD PRECAST CONCRETE RISER FRAMES. THE USE OF BRICK SHALL BE LIMITED TO 6 INCHES. IF THIS DIMENSION EXCEEDS 6 INCHES, PRECAST CONCRETE RISER FRAMES SHALL BE USED AS SHOWN ON STANDARD DRAWING D-RF-1.
 - FOR CASES WHERE THE OUTLET PIPE DIAMETER IS LARGER THAN THE INLET PIPE DIAMETER, A MINIMUM 23 INCH DEPTH SHALL BE MAINTAINED ABOVE THE OUTLET PIPE.
 - CONTRACTOR TO INSTALL PIPE COMPLETELY INTO WALL OPENING & FILL VOID BETWEEN PIPE & OPENING WITH NON-SHRINK GROUT PER STANDARD SPECIFICATION SECTION 921.
 - PRECAST CATCH BASINS UNITS WHICH ARE DAMAGED DURING SHIPMENT OR INSTALLATION WILL BE REJECTED. IT SHALL BE THE RESPONSIBILITY OF THE CONTRACTOR TO REPLACE DAMAGED CATCH BASIN UNITS AT THEIR OWN EXPENSE.
 - A MINIMUM OF 8" OF SOLID CONCRETE WALL TO BE MAINTAINED ABOVE THE HOLE CUT OUT DIRECTLY UNDER THE FLAT TOP SLAB AT THE TOP MOST SECTION.

* SEE NOTE 10



DWAIN R. HAMBY
REGISTERED ENGINEER
AGRICULTURE
No. 113532
STATE OF TENNESSEE

2/24/22

STATE OF TENNESSEE
ROADWAY DESIGN DIVISION
TDOT
OFFICE OF STANDARDS AND POLICY
DEPARTMENT OF TRANSPORTATION
APPROVED

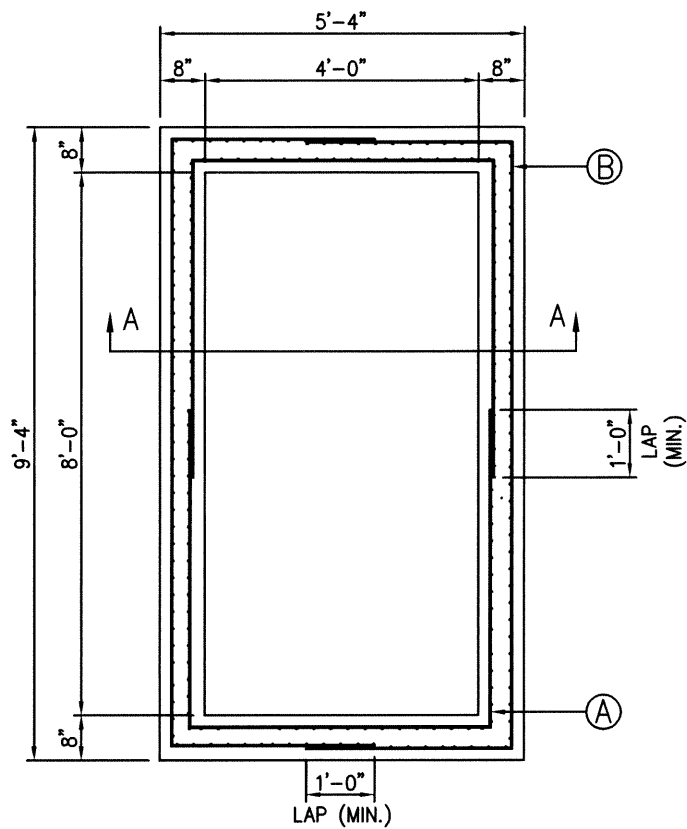
REVISIONS		FORTERRA WEST MEMPHIS PLANT 501 EAST JEFFERSON ST. WEST MEMPHIS, AR PH. 870 735-5514	
PROJECT: TENNESSEE DOT ALTERNATE REINFORCEMENT DETAILS		DRAWN BY: J.A.E.	
SCALE: N.T.S.	DATE: 02/22/22	APPROVED BY: <i>[Signature]</i>	
4'-0" X 8'-0" PRECAST CATCH BASIN			
FORTERRA DWG. FILE Forterra TDOT Alt	CHECKED BY: D.R.H.	SHEET 1 OF 2	

Z:\1 Forterra\Engineering\p\tdot\ACAD Drawings\Forterra TDOT Alt 2in.dwg, 2/24/2022 2:23:57 PM

REINFORCING STEEL SCHEDULE

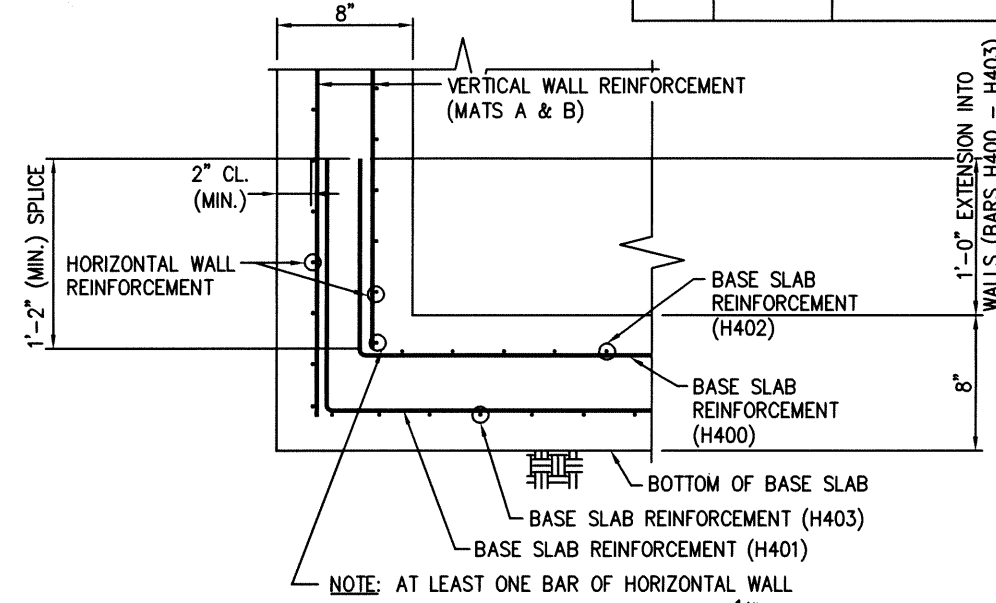
MARK	NO. REQ'D.	LENGTH	TYPE
A	2	SEE DIAGRAM	BENT
B	2	SEE DIAGRAM	BENT
H400	18	SEE DIAGRAM	BENT
H401	19	SEE DIAGRAM	BENT
H402	10	SEE DIAGRAM	BENT
H403	11	SEE DIAGRAM	BENT

BENDING DIAGRAM - DIMENSIONS ARE OUT TO OUT			
		#4 BAR	H400
		4'-8"	H400
		4'-10 1/2"	H401
		8'-6 1/2"	H402
		8'-9"	H403



PLAN VIEW

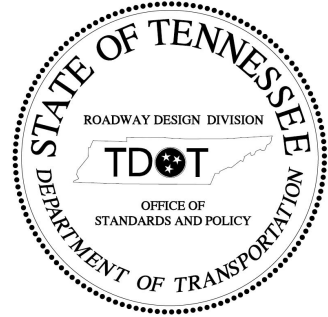
(TOP, GRATE & GRADE RISERS NOT SHOWN)



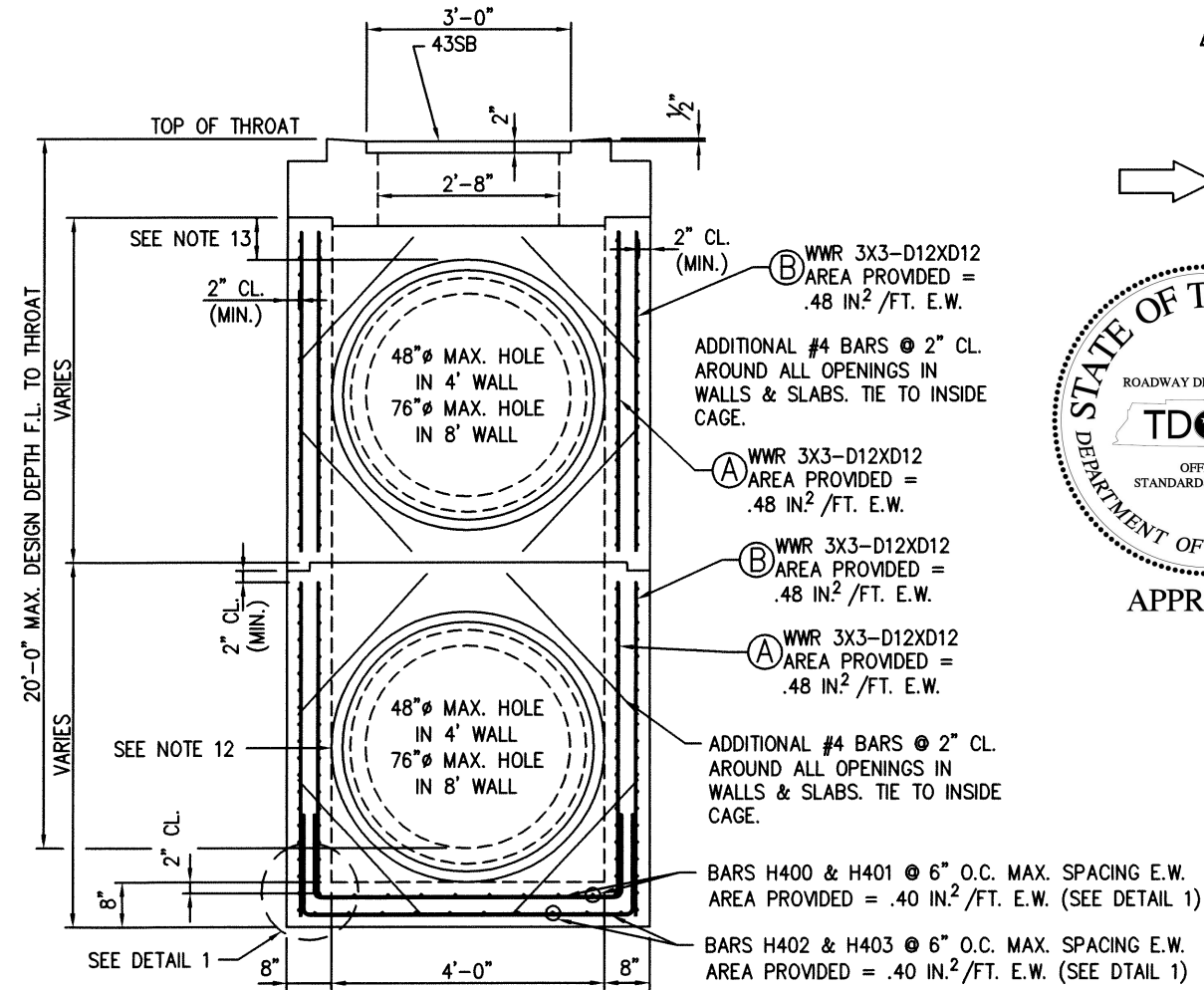
DETAIL 1

NOTE: AT LEAST ONE BAR OF HORIZONTAL WALL REINFORCEMENT TO BE EMBEDDED 1 1/2" BELOW TOP OF BASE SLAB.

NOTE: WALL & BASE SLAB POURED MONOLITHICALLY.

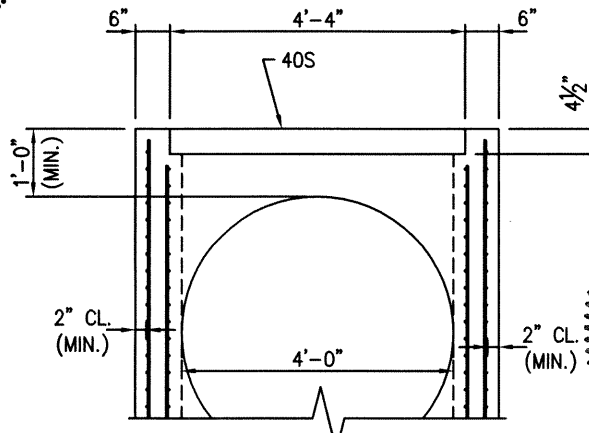


APPROVED



SECTION A-A

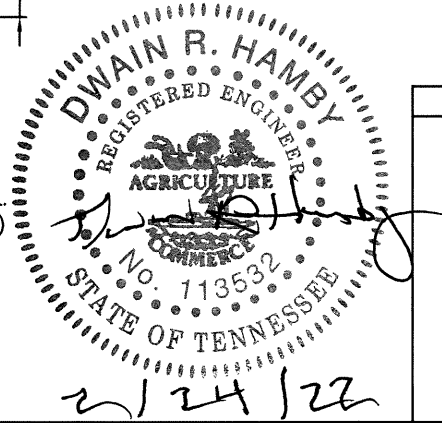
(ELEVATION)



ELEVATION 40S

GENERAL NOTES:

- DESIGN LOADING: HL-93 LIVE LOAD
- THIS DRAWING TO BE USED AS AN ALTERNATE REINFORCEMENT DESIGN FOR THE FOLLOWING TDOT STANDARDS: D-CB-40S & D-CB-43SB. FOR DETAILS NOT COVERED BY THIS DRAWING, REFERENCE THE ABOVE LISTED STANDARD DRAWINGS.
- PRECAST CONCRETE CATCH BASINS SHALL BE CONSTRUCTED TO COMPLY WITH ASTM C913.
- THE FOLLOWING MATERIAL PROPERTIES ARE REQUIRED FOR PRECAST STRUCTURES:
 CONCRETE: $f'_c = 5,000$ PSI AT 28 DAYS
 REINFORCING STEEL: ASTM A615, $F_y = 60,000$ PSI
 WELDED WIRE REINFORCEMENT: ASTM A1064, WITH A MINIMUM YIELD STRENGTH OF 70,000 PSI. THE MINIMUM SPLICE LENGTH IS TO BE 12 INCHES UNLESS NOTED OTHERWISE. ALL REINFORCING STEEL TO BE INSTALLED AS DETAILED ON THIS DRAWING.
- APPROPRIATE SIZING AND LOCATION OF LIFTING DEVICES SHALL BE THE RESPONSIBILITY OF THE FABRICATOR.
- THE CONTRACTOR IS TO PATCH ALL LIFTING DEVICE HOLES WITH GROUT AND PLACE A MINIMUM OF 1 INCH OF COVER OVER THE HARDWARE OF THESE DEVICES ON BOTH TOP AND BOTTOM SURFACES.
- SEE STANDARD: D-CBB-40S & D-CBB-43SB FOR CASTING DETAILS.
- CUT OUT HOLES BASED ON REINFORCED CONCRETE PIPE WITH WALL TYPE "B". HOLES TO BE FORMED IN ORDER TO OBTAIN A SMOOTH EDGED HOLE. SCORED OR ETCHED HOLES WITH REINFORCING LEFT UNCUT WILL NOT BE PERMITTED.
- ALL FLEXIBLE PIPE MATERIALS REQUIRE GASKET. SEE STANDARD D-PB-2.
- FOR CASES WHERE THE OUTLET PIPE DIAMETER IS LARGER THAN THE INLET PIPE DIAMETER, A MINIMUM 40S = 12" & 43SB = 8" INCH DEPTH SHALL BE MAINTAINED ABOVE THE OUTLET PIPE.
- CONTRACTOR TO INSTALL PIPE COMPLETELY INTO WALL OPENING & FILL VOID BETWEEN PIPE & OPENING WITH NON-SHRINK GROUT PER STANDARD SPECIFICATION SECTION 921.
- PRECAST CATCH BASINS UNITS WHICH ARE DAMAGED DURING SHIPMENT OR INSTALLATION WILL BE REJECTED. IT SHALL BE THE RESPONSIBILITY OF THE CONTRACTOR TO REPLACE DAMAGED CATCH BASIN UNITS AT THEIR OWN EXPENSE.
- A MINIMUM OF 8" FOR 43SB AND 12" FOR 40S OF SOLID CONCRETE WALL TO BE MAINTAINED ABOVE THE HOLE CUT OUT DIRECTLY UNDER THE FLAT TOP SLAB AT THE TOP MOST SECTION.



REVISIONS			
		FORTERRA WEST MEMPHIS PLANT 501 EAST JEFFERSON ST. WEST MEMPHIS, AR PH. 870 735-5514	
PROJECT: TENNESSEE DOT ALTERNATE REINFORCEMENT DETAILS			
SCALE: N.T.S.	DATE: 02/22/22	APPROVED BY:	DRAWN BY: J.A.E.
4'-0" X 8'-0" PRECAST CATCH BASIN			
FORTERRA DWG. FILE Forterra TDOT Alt	CHECKED BY: D.R.H.	SHEET 2 OF 2	