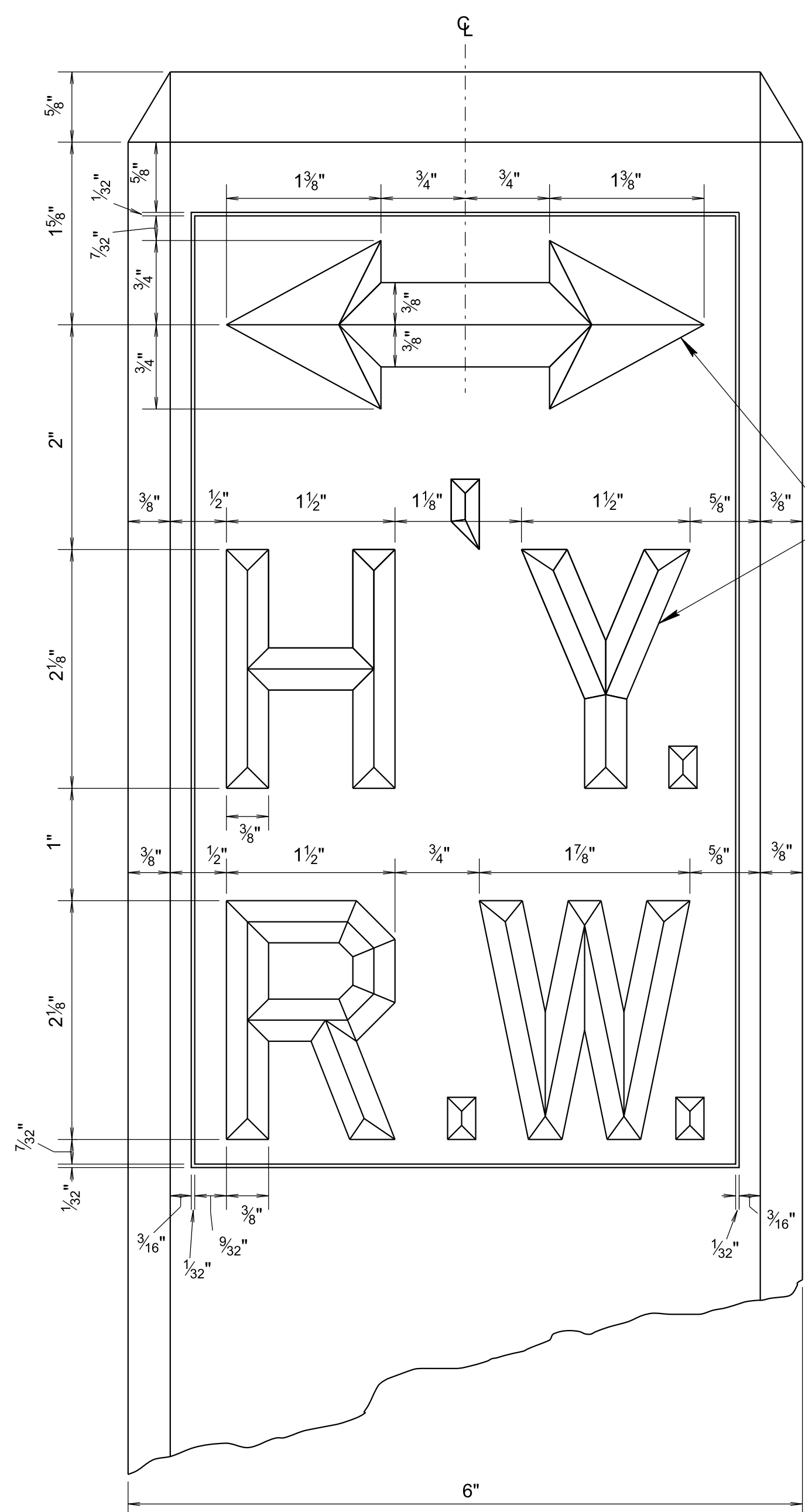
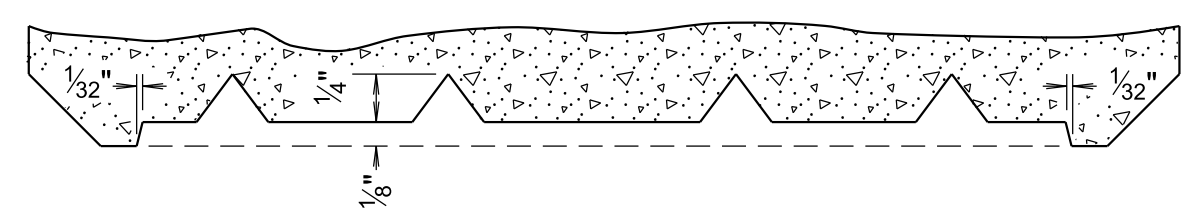


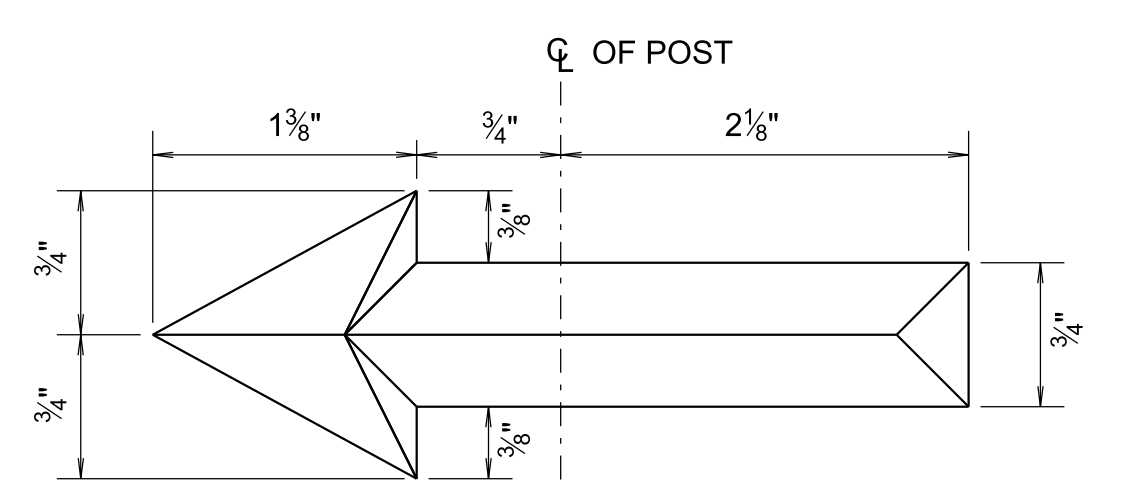
- REV. 7-2-72: CHANGED DEPARTMENT NAME.
- REV. 1-1-76: CHANGED DRAWING NUMBER FROM RW-M-2a(68) TO S-RP-2.
- REV. 4-18-90: REDREW SHEET AND CHANGED SHEET NAME. THE DESIGNATION "POSTS" HAS BEEN CHANGED TO "MARKERS". MODIFIED GENERAL NOTES.
- REV. 5-27-96: CHANGED DIMENSION OF DETAIL ON TYPE "B" AND "C" MARKERS.
- REV. 1-19-99: MODIFIED GENERAL NOTES AND ADDED PRECAST SPECIFICATIONS.
- REV. 2-8-16: REVISED GENERAL NOTES.
- REV. 06-28-2019: REDREW SHEET.



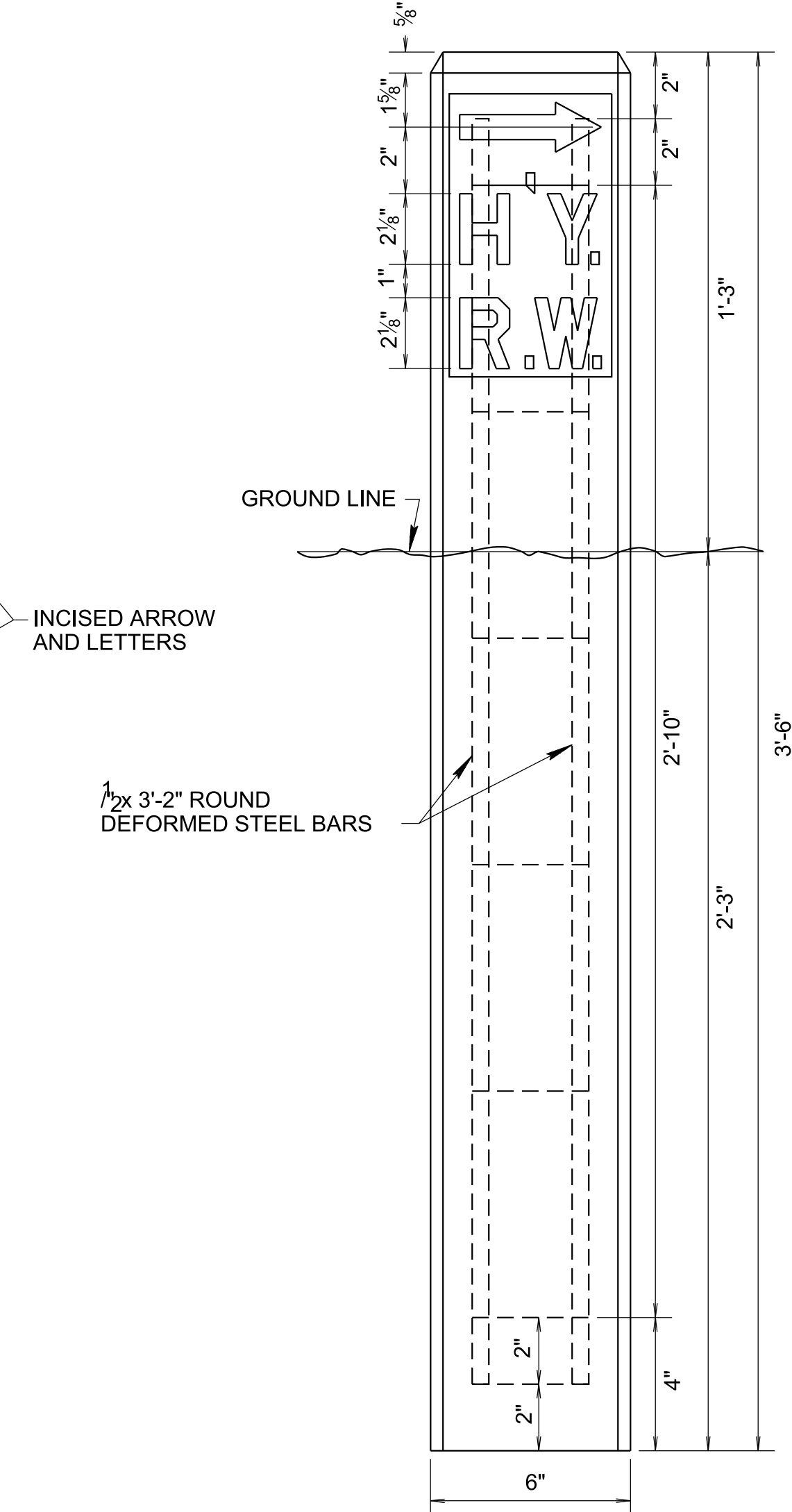
DETAIL OF INSCRIPTION



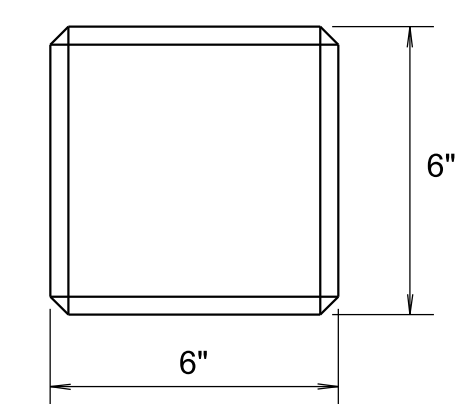
CROSS-SECTION



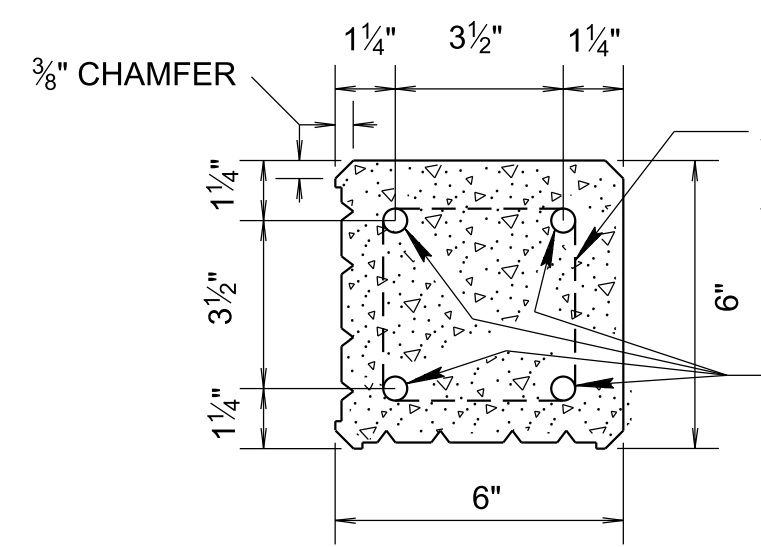
**ARROW FOR TYPES "B" AND "C" MARKERS
SCALE = FULL SIZE**



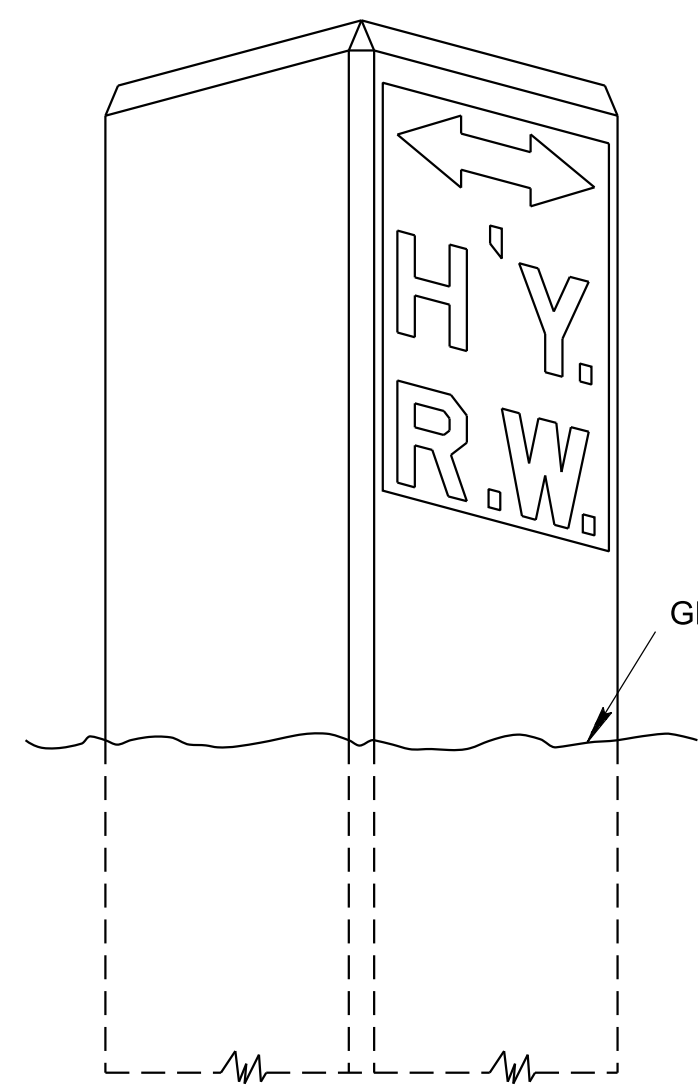
FRONT VIEW



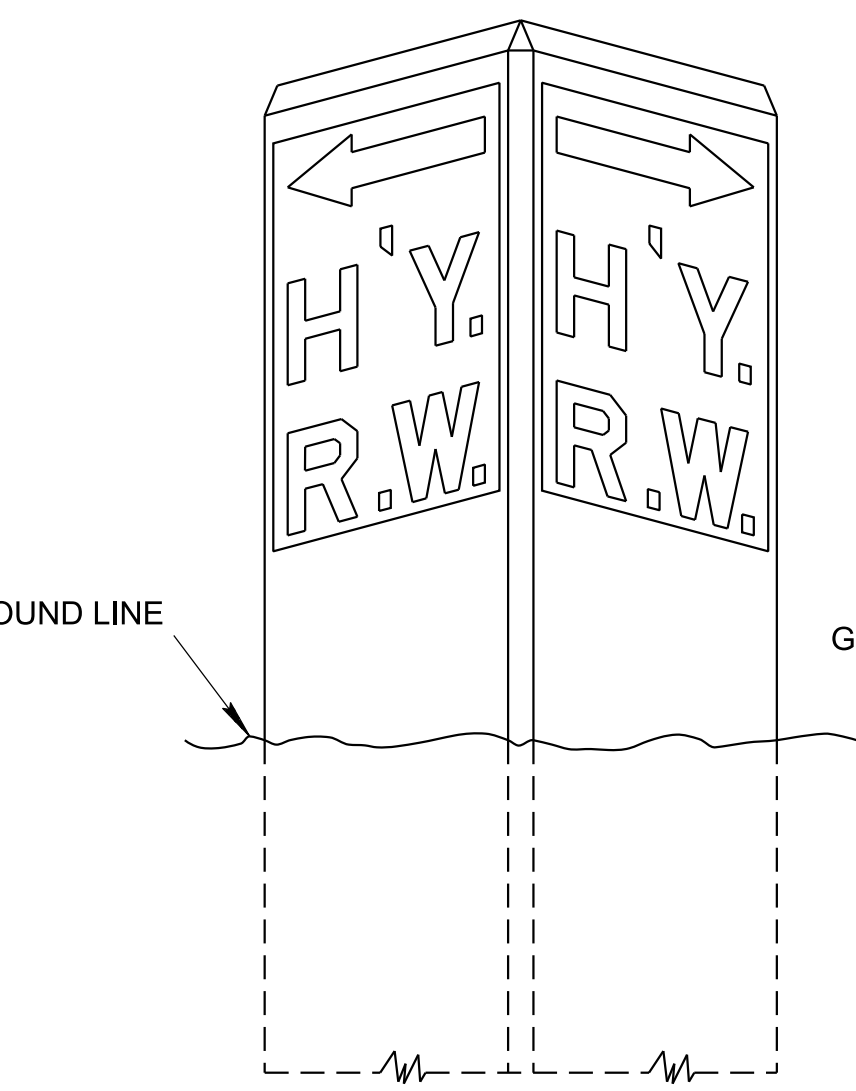
TOP VIEW



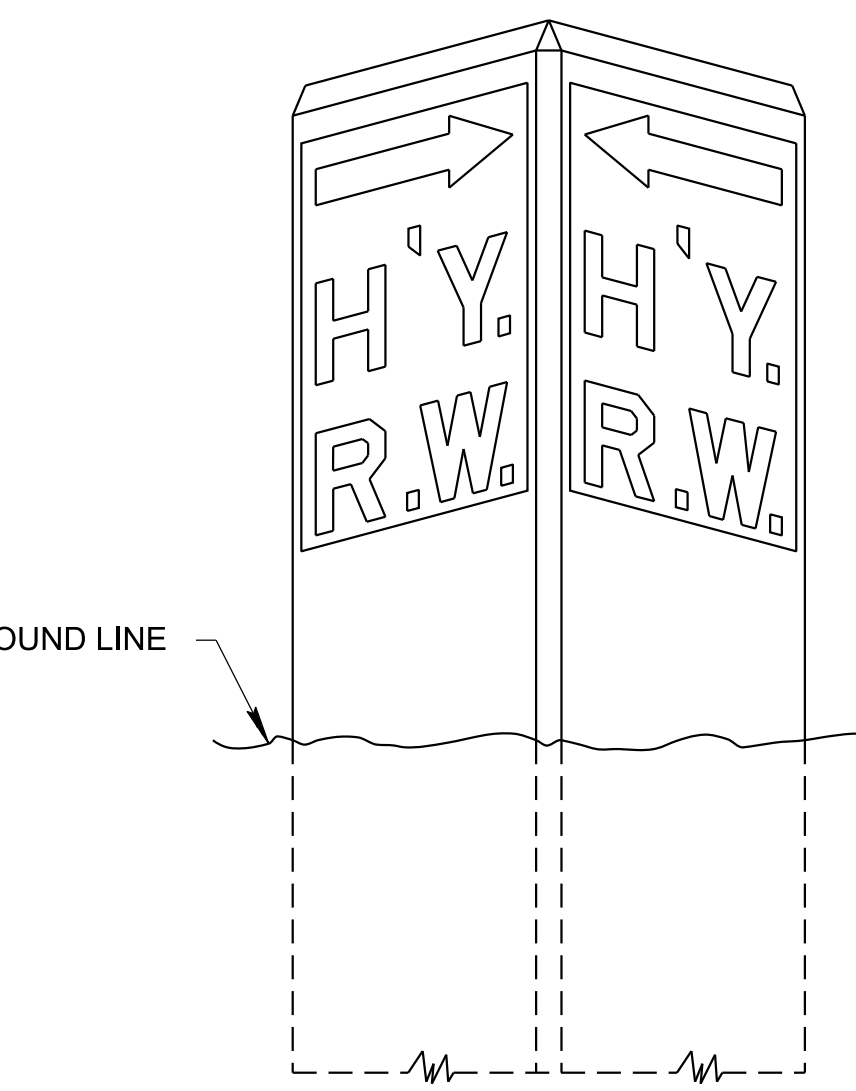
**CROSS-SECTION
SCALE 3" = 1'**



**TYPE "A"
INSCRIPTION ON ONE SIDE
(PARALLEL TO CENTERLINE)**



**TYPE "B"
INSCRIPTION ON TWO SIDES
(TURNS TO CENTERLINE)**



**TYPE "C"
INSCRIPTION ON TWO SIDES
(TURNS AWAY FROM CENTERLINE)**

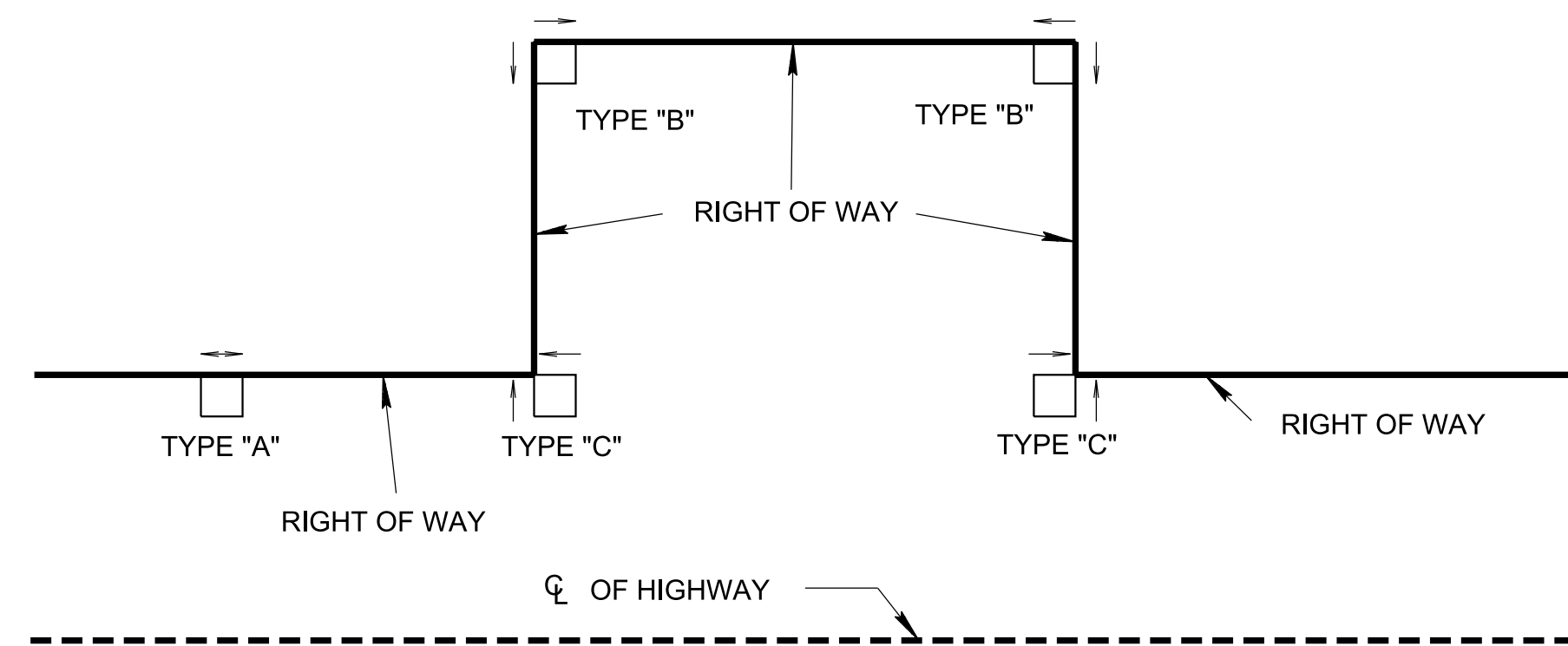


DIAGRAM SHOWING TYPES OF MARKERS TO USE

- GENERAL NOTES**
- (A) CONCRETE RIGHT-OF-WAY MARKERS SHALL BE CONSTRUCTED AND ERECTED IN ACCORDANCE WITH THIS DRAWING AND SECTION 708, MONUMENTS AND MARKERS, OF THE STANDARD SPECIFICATIONS FOR ROAD AND BRIDGE CONSTRUCTION.
 - (B) CONCRETE: $f_c = 4000$ PSI AT 28 DAYS
REINFORCING STEEL: ASTM A615, $F_y = 60,000$ PSI
ALL REINFORCING IS TO BE INSTALLED AS DETAILED ON THIS DRAWING.
 - (C) PRECAST RIGHT-OF-WAY MARKER UNITS WHICH ARE DAMAGED DURING SHIPMENT OR INSTALLATION WILL BE REJECTED. IT SHALL BE THE RESPONSIBILITY OF THE CONTRACTOR TO REPLACE DAMAGED RIGHT-OF-WAY MARKER UNITS AT THEIR OWN EXPENSE.
 - (D) RIGHT-OF-WAY MARKERS ARE TO BE INSTALLED FLUSH WITH THE GROUND IN AREAS WHERE THEY MIGHT BE AN OBSTACLE TO VEHICLES, MOWERS, ETC.
 - (E) PAYMENT ITEM NO.
708-02.01 MARKERS (CONCRETE R.O.W. POSTS), EACH

MINOR REVISION -- FHWA APPROVAL NOT REQUIRED

STATE OF TENNESSEE
STANDARD DRAWING
DEPARTMENT OF TRANSPORTATION

STANDARD
CONCRETE
RIGHT-OF-WAY
MARKERS

12/3/2019 11:24:07 AM C:\Users\jj00547\Desktop\104.05 Fence & Right of Way Markers IP\SRP2-20190628.DGN