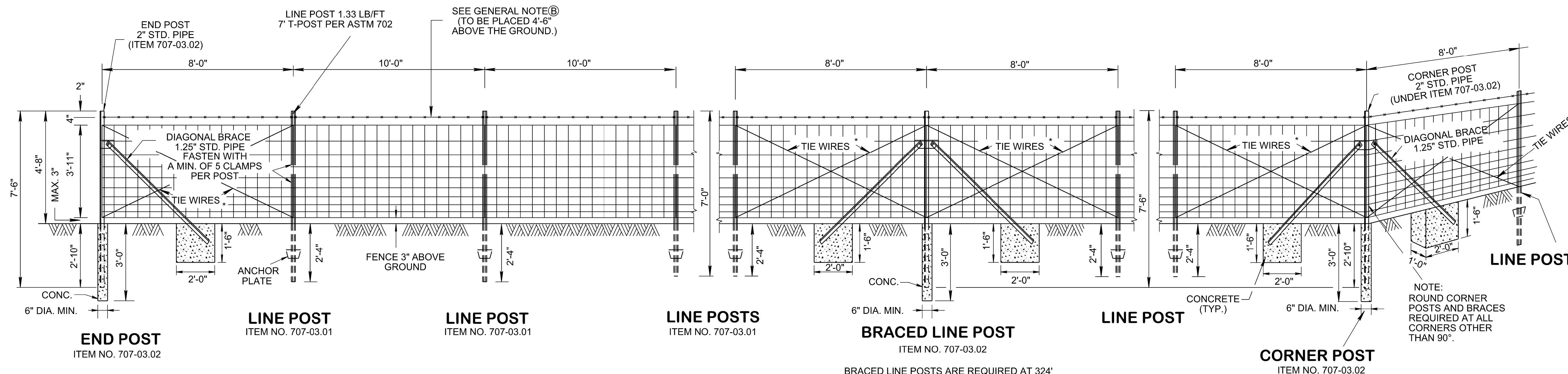


7/20/2020 7:50:34 AM
 P:\StandDraw\DESIGN STANDARDS\Standards Drawings\Standard Roadway Drawings - CURRENT\In Progress\10-104.00 Roadway, Pavement Appurtenances and Fence IP\104.05 Fence & Right of Way

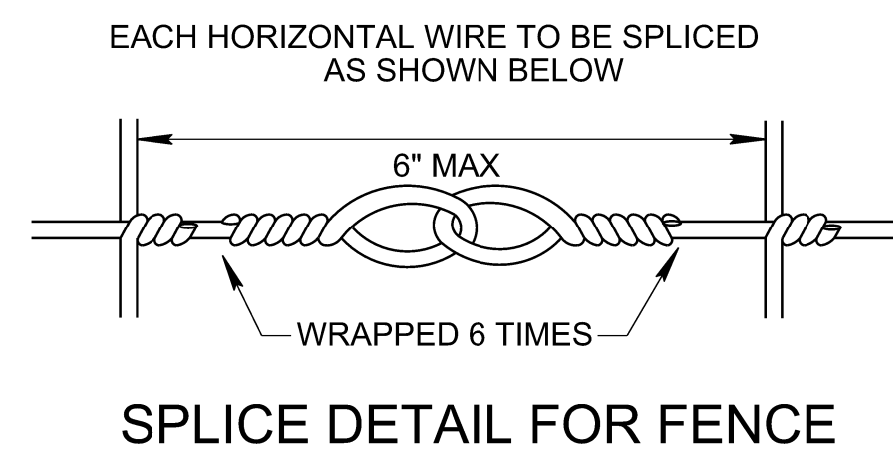


- REV. 6-3-69: ADDED NOTE REGARDING ALTERNATE TYPE TRUSS ROD AND FITTINGS.
- REV. 7-1-72: CHANGED DEPARTMENT NAME.
- REV. 12-7-75: ADDED ITEM NO'S FOR END BRACED LINE AND CORNER POSTS.
- REV. 1-1-76: CHANGED DRAWING NUMBER FROM RD-F-10(68), (SHEET 1) TO S-F-10.
- REV. 11-9-76: REMOVED CHAIN LINK FENCE DETAILS AND SPECIES FROM THIS SHEET.
- REV. 2-25-77: DELETED BARED WIRE AT BOTTOM OF FENCE, CHANGED POST SPACING ON BRACED LINE POSTS AND CORNER POSTS FROM 10' TO 8'.
- REV. 7-17-81: CHANGED ITEM NO. TO AGREE WITH NEW SPECIFICATION BOOK.
- REV. 1-24-08: REDREW SHEET AND CHANGED LENGTH OF ALL FENCE POSTS. MOVE STOCK FENCE AND CHAIN LINK FENCE TO S-F-10C.
- REV. 6-1-09: REMOVED TIE WIRES BETWEEN LINE POSTS. MODIFIED GENERAL NOTE (A). ADDED GENERAL NOTE (B). REVISED LINE POST SPACING.
- REV. 11-15-17: ADDED LINE POST NOTE. CHANGED R.O.W FENCE LINE STYLE. CHANGED FONT. REWORDED THE BRACED LINE POST NOTE REGARDING MAXIMUM INTERVALS.
- REV. 06-28-2019: REDREW SHEET.
- REV. 7-17-2020: CHANGED MIDDLE FENCE HEIGHTS.

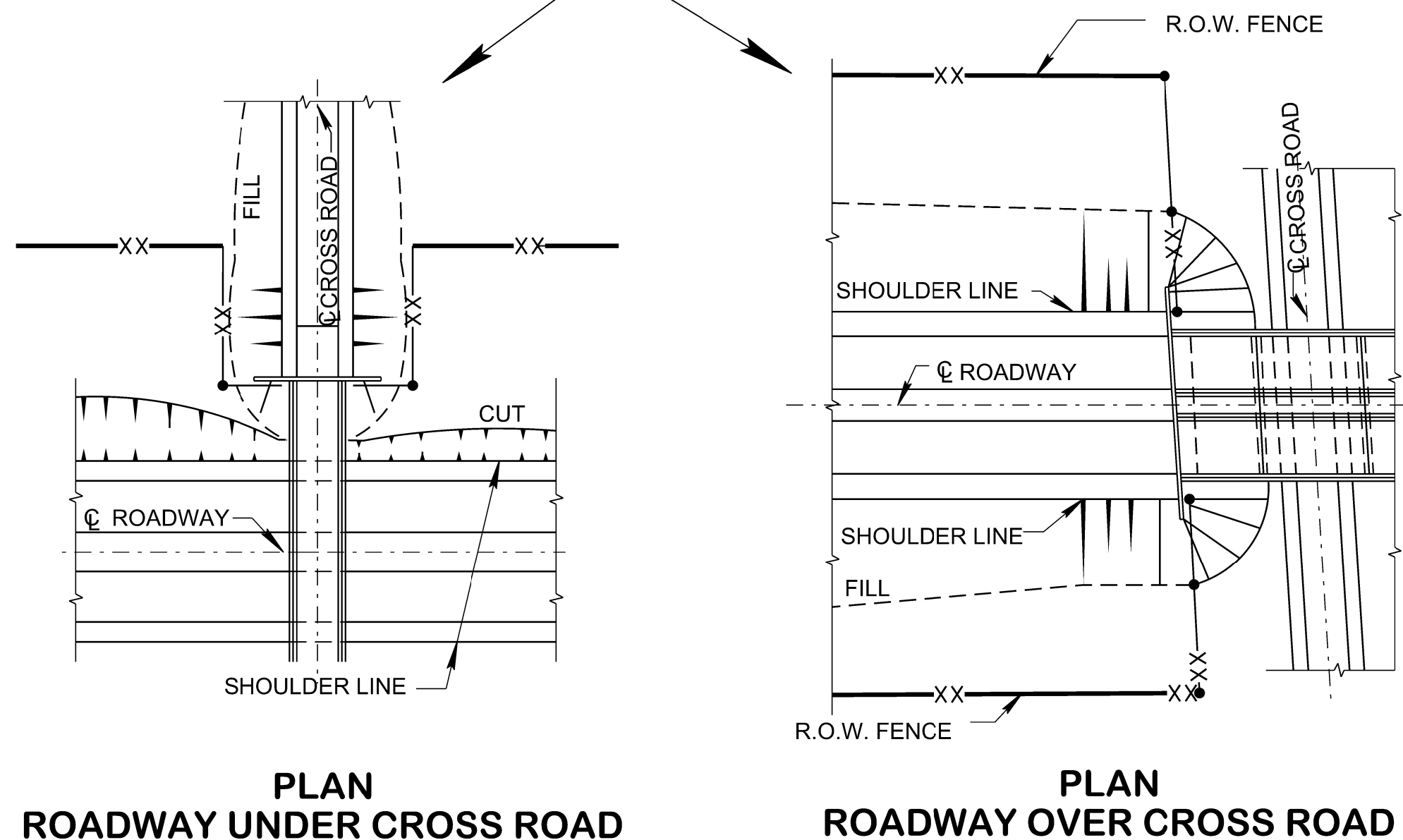
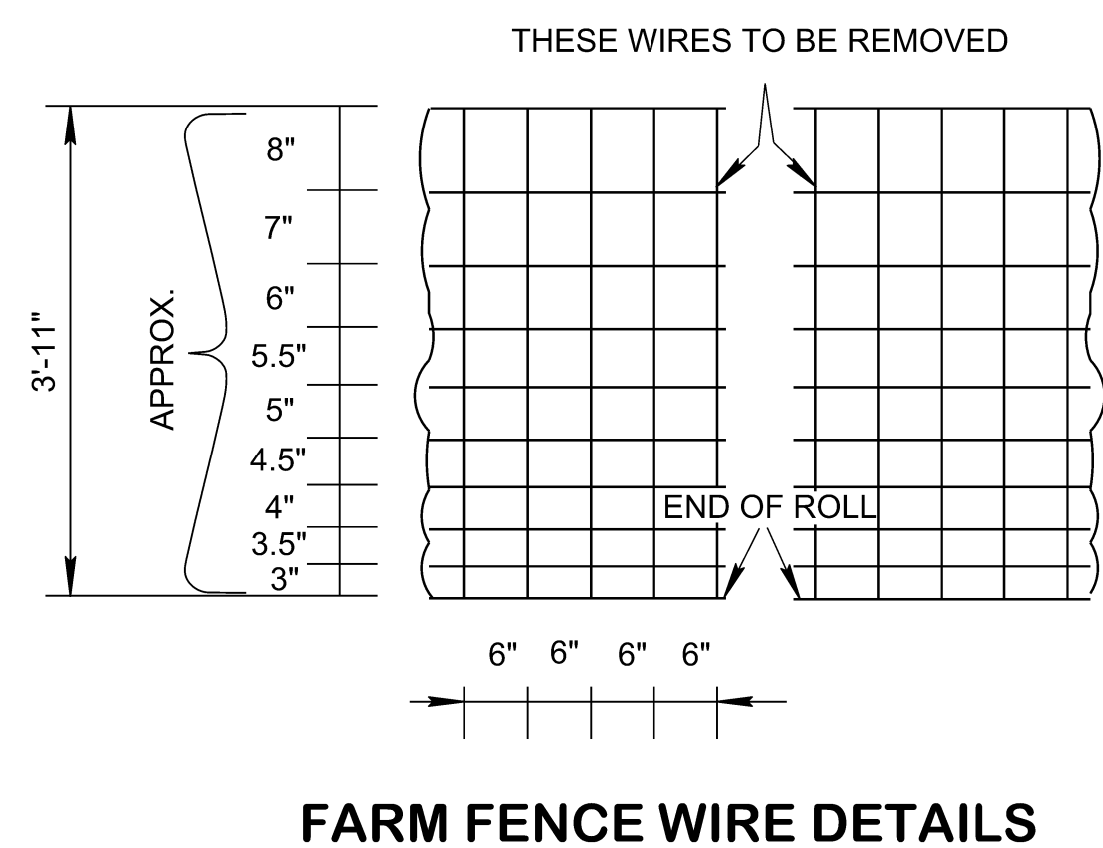
* NOTE REGARDING TIE WIRES:
 NO. 9 GAUGE DOUBLE STRAND GALVANIZED TIE WIRE TWISTED TO SINGING TIGHTNESS, DOUBLE WRAPPED AROUND POSTS.

BRACED LINE POSTS ARE REQUIRED AT 324' MAXIMUM INTERVALS FROM THE BEGINNING CORNER FOR THE FIRST ROLL. BRACED LINE POSTS ARE REQUIRED AT 330' MAXIMUM INTERVALS AFTER THE FIRST ROLL FROM THE BEGINNING CORNER. THIS SPACING WILL PERMIT A 6' LENGTH OF FABRIC TO EXTEND BEYOND THE BRACED LINE POST ASSEMBLY FOR ATTACHING THE STRETCHING DEVICE AND FOR SPLICING TO THE NEXT ROLL.

NOTE:
 ROUND CORNER POSTS AND BRACES REQUIRED AT ALL CORNERS OTHER THAN 90°.



NOTE: THESE INSTALLATION SCHEMES ARE TYPICAL AND ARE NOT TO BE CONSTRUED AS REPRESENTATIVE OF ALL CONDITIONS WHICH WILL BE ENCOUNTERED. CONSTRUCTION MAY BE VARIED AS REQUIRED TO MEET FIELD CONDITIONS AND/OR AS DIRECTED BY ENGINEER.



GENERAL NOTES

(A) GALVANIZED STEEL WOVEN WIRE MEETING THE REQUIREMENTS OF ASTM A-116 FOR NO. 11 FARM, DESIGN NO. 1047-6-11, CLASS III COATING OR GALVANIZED HIGH TENSILE STRENGTH STEEL WOVEN WIRE MEETING THE REQUIREMENTS OF ASTM A-116 FOR NO. 12½ FARM DESIGN, CLASS III COATING EXCEPT THAT THE TOP AND BOTTOM STRAND SHALL BE 10½ GAUGE AND THE YIELD STRENGTH SHALL BE EQUIVALENT TO NO. 11 FARM DESIGN 1047-6-11.

(B) THE BARBED WIRE SHALL CONSIST OF 2 NO. 12½ GAUGE TWISTED STEEL LINE WIRES WITH NO. 14 GAUGE 4-POINT BARBS SPACED NOT MORE THAN 5 IN. APART. IT MAY BE EITHER GALVANIZED OR ALUMINUM COATED. THE GALVANIZED WIRE SHALL MEET THE REQUIREMENTS OF ASTM A-121, CHAIN LINK FENCE GRADE. AT THE OPTION OF THE CONTRACTOR, HIGH TENSILE STRENGTH WIRE WITH BARB SPACING AS DESIGNATED ABOVE, MAY BE USED. IF THE CONTRACTOR ELECTS TO FURNISH HIGH TENSILE STRENGTH WIRE, IT SHALL MEET THE REQUIREMENTS OF ASTM A-121, CHAIN LINK FENCE GRADE FOR THE RESPECTIVE WIRE SIZE.

(C) SEE STANDARD DRAWING S-FG-20 FOR DETAILS OF FENCING OVER DITCHES FOR WATER CROSSING DETAILS.

(D) SEE STANDARD SPECIFICATIONS, SUB-SECTION 707.05 REGARDING FURNISHING AND PLACING ADDITIONAL BRACED LINE POSTS WHERE TERRAIN IS IRREGULAR.

(E) FENCE TO BE ANGLED TO EDGE OF CULVERTS AS SHOWN ON PLANS OR AS DIRECTED BY THE ENGINEER.

(F) PAYMENT WILL BE MADE UNDER ITEM NOS.:

707-03.01 STOCK FENCE.	L.F.
707-03.02 END, BRACED LINE, CORNER POST ASSEMBLY (STOCK FENCE), EACH	

FENCE LEGEND: PROPOSED STOCK FENCE ———— XX ———— , RIGHT-OF-WAY CONTROL ACCESS FENCE ———— XX ————

MINOR REVISION -- FHWA APPROVAL NOT REQUIRED

STATE OF TENNESSEE
 STANDARD DRAWING
 DEPARTMENT OF TRANSPORTATION

STANDARD
 RIGHT-OF-WAY
 STOCK FENCE