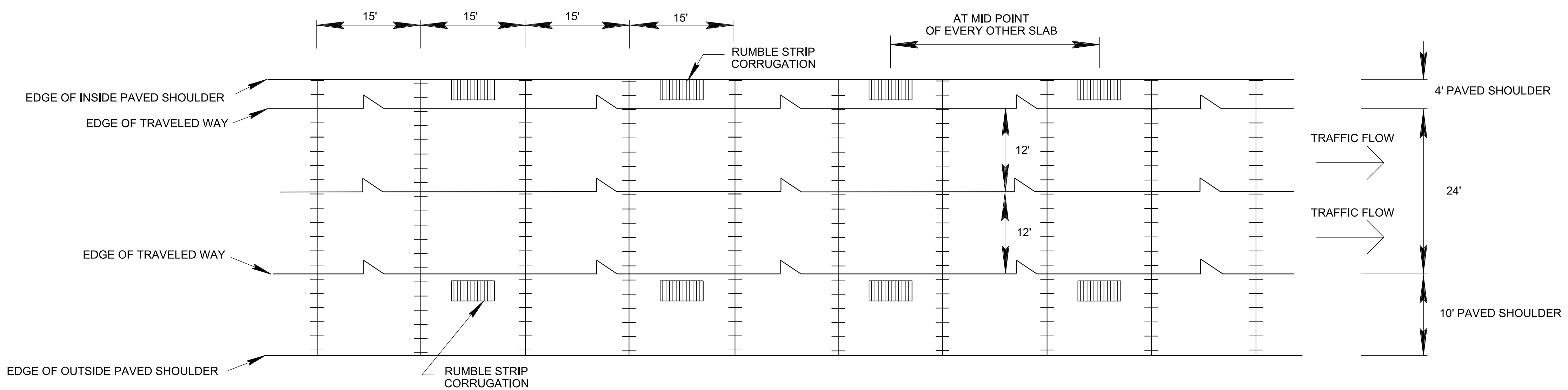
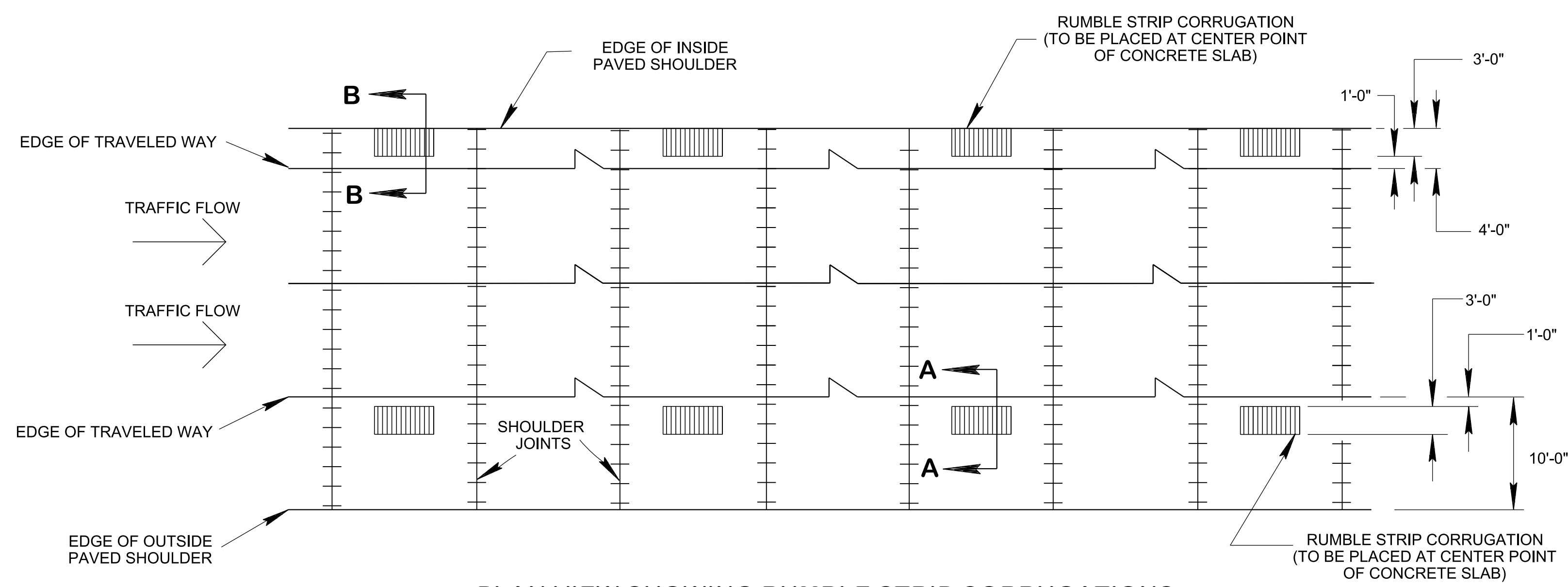


4/15/2020 2:39:18 PM P:\StandDraw\DESIGN STANDARDS\Standards Drawings\10-104.00 Roadway, Pavement Appurtenances and Fence IP\104.01 Concrete Pavement IP\RP

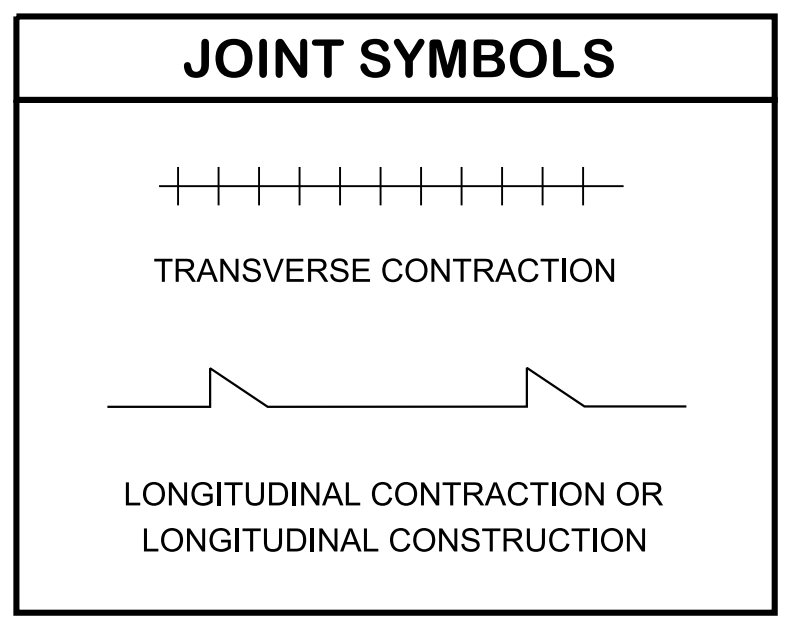
REV. 5-27-01: CHANGED VARIABLE JOINT SPACING TO 15' CONSTANT IN ALL VIEWS TO MATCH STD. DG. NO. RP-J-1.
 REV. 9-29-10: CHANGED ITEM NUMBER.
 REV. 05-01-20: REVISED AND RENAMED DETAILS. REDREW SHEET.



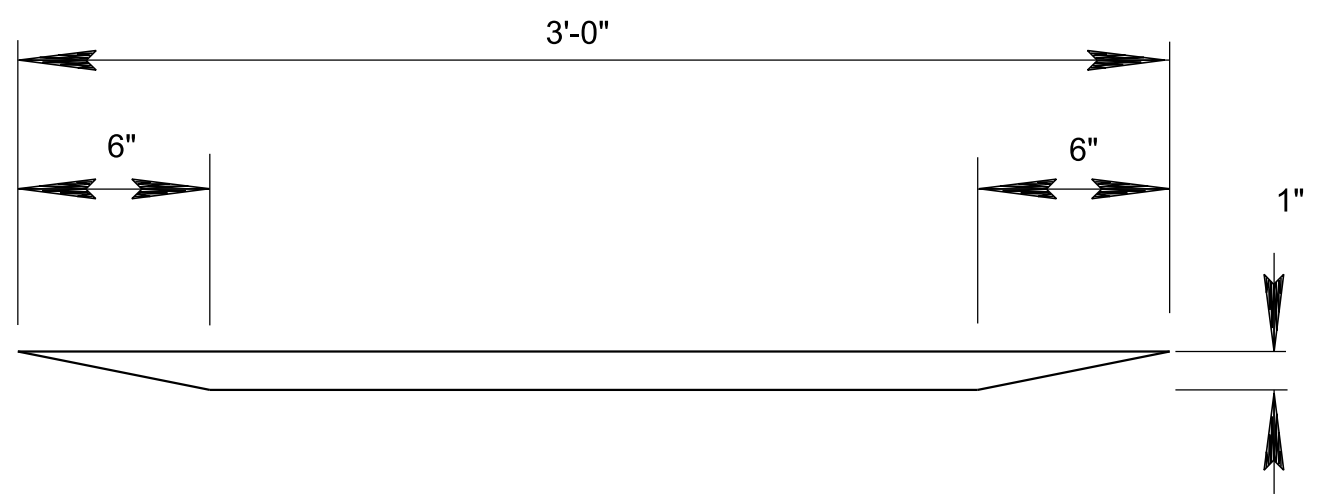
PLAN VIEW SHOWING RUMBLE STRIP CORRUGATIONS IN CONCRETE SHOULDERS, DETAIL 1



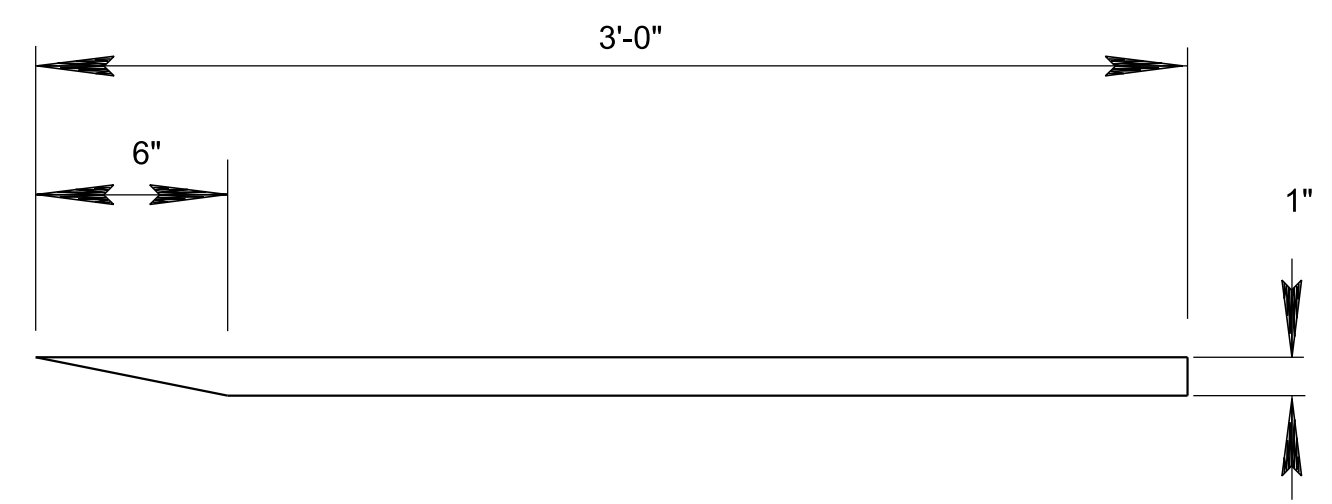
PLAN VIEW SHOWING RUMBLE STRIP CORRUGATIONS IN CONCRETE SHOULDERS, DETAIL 2



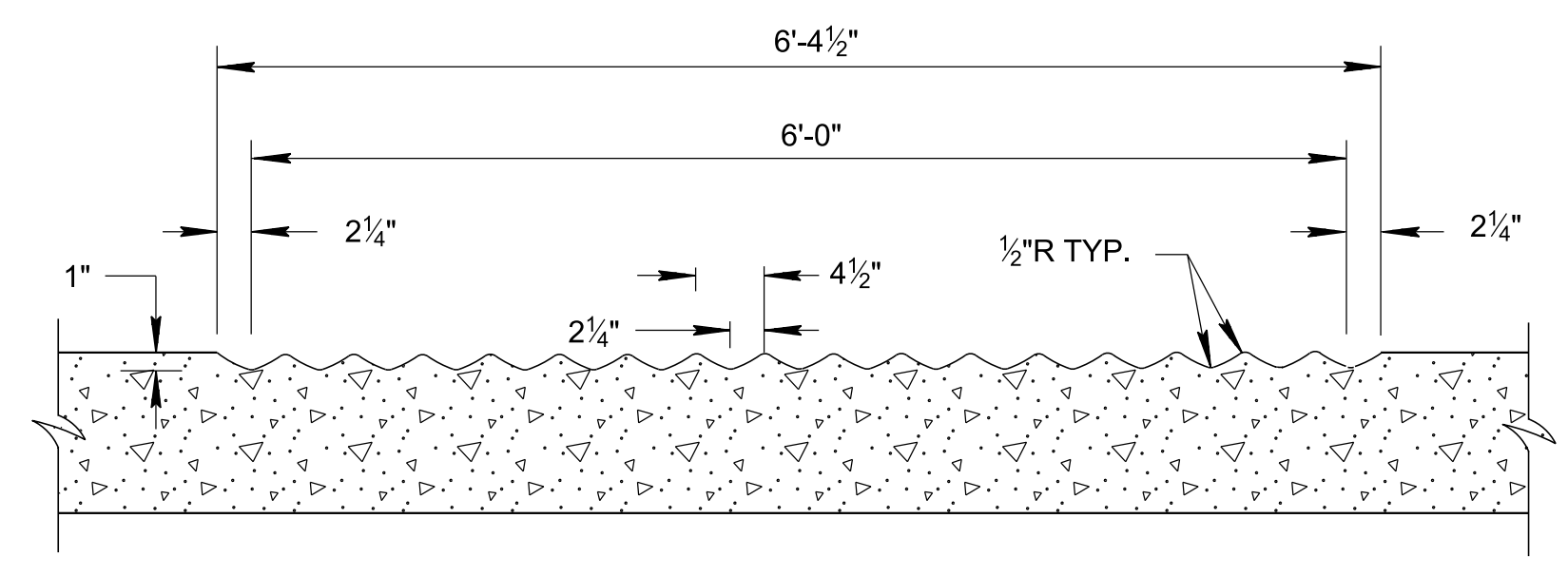
NOTE: RUMBLE STRIPS TO BE FORMED AND PAID FOR UNDER ITEM NO. 501-03.10, CONCRETE SHOULDER RUMBLE STRIP LINEAR FEET.



SECTION A-A



SECTION B-B



DETAIL OF CORRUGATIONS IN CONCRETE SHOULDER RUMBLE STRIP

STATE OF TENNESSEE
 STANDARD DRAWING
 DEPARTMENT OF TRANSPORTATION

CONCRETE SHOULDER RUMBLE STRIP DETAIL
 (FOR 4 LANE DIVIDED HWY)

10-26-1996 RP-CS-1

NOT TO SCALE