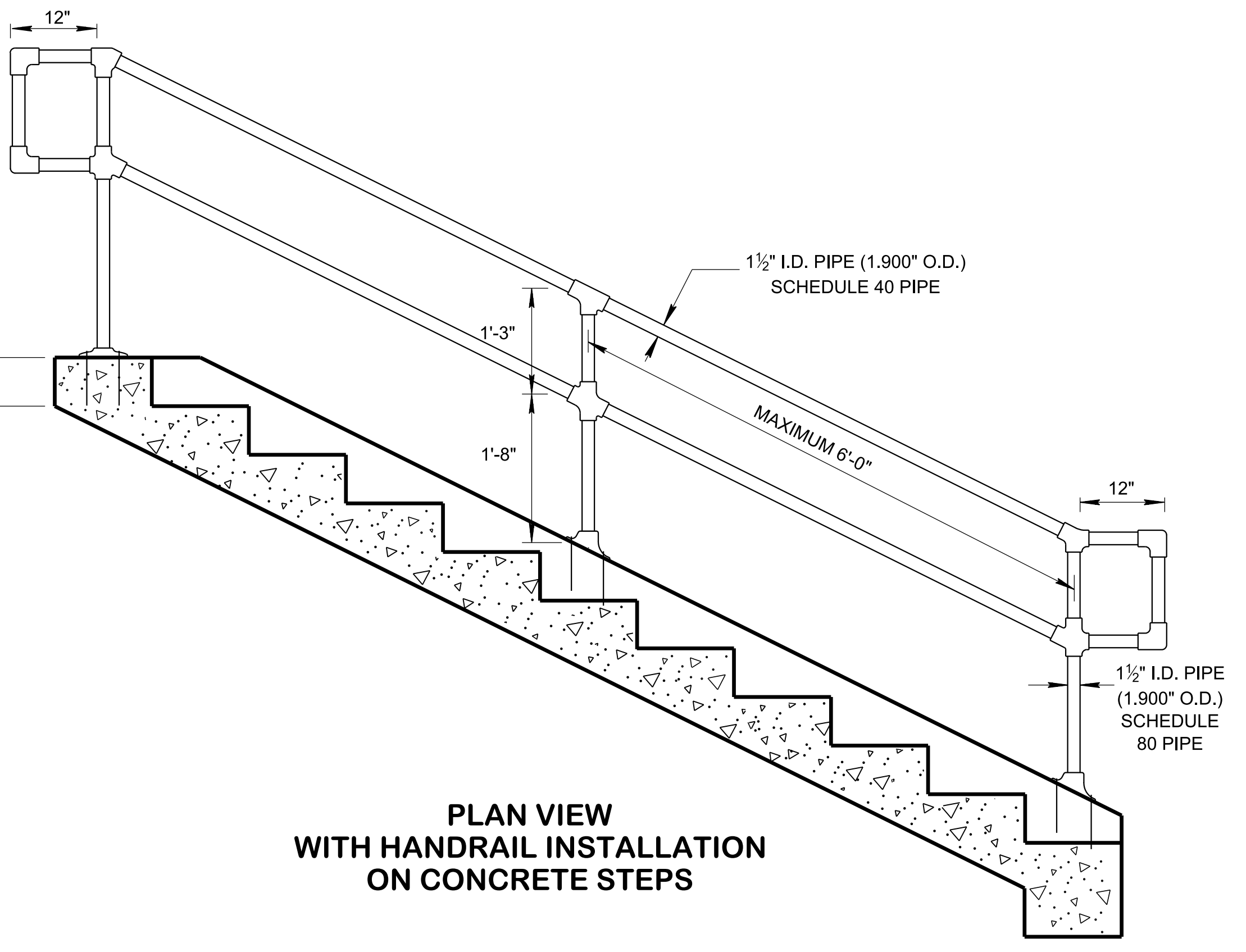
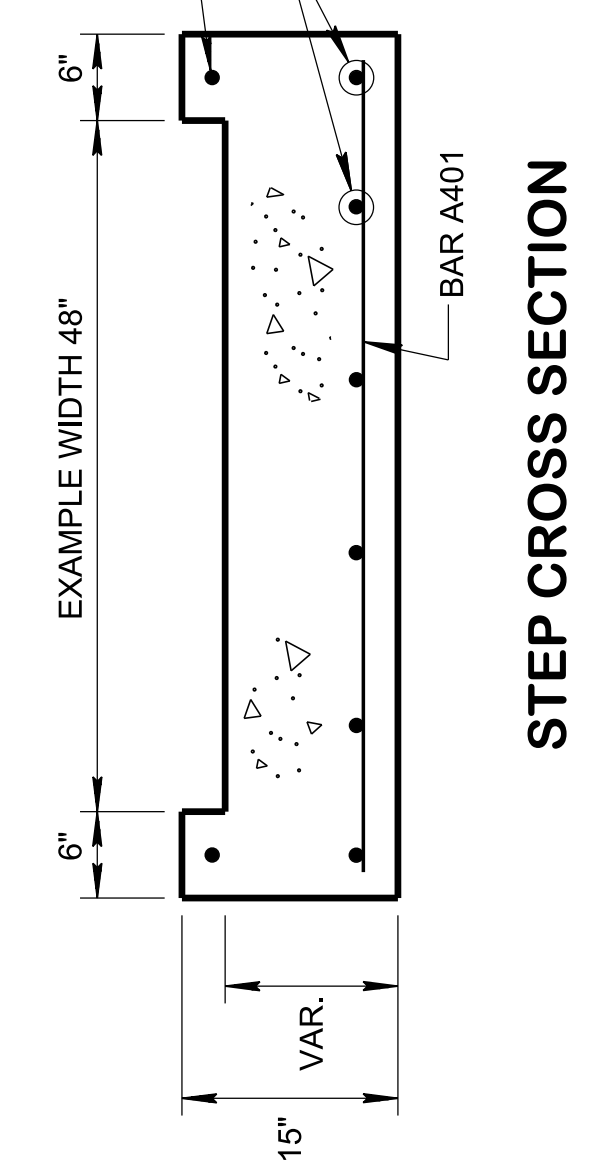
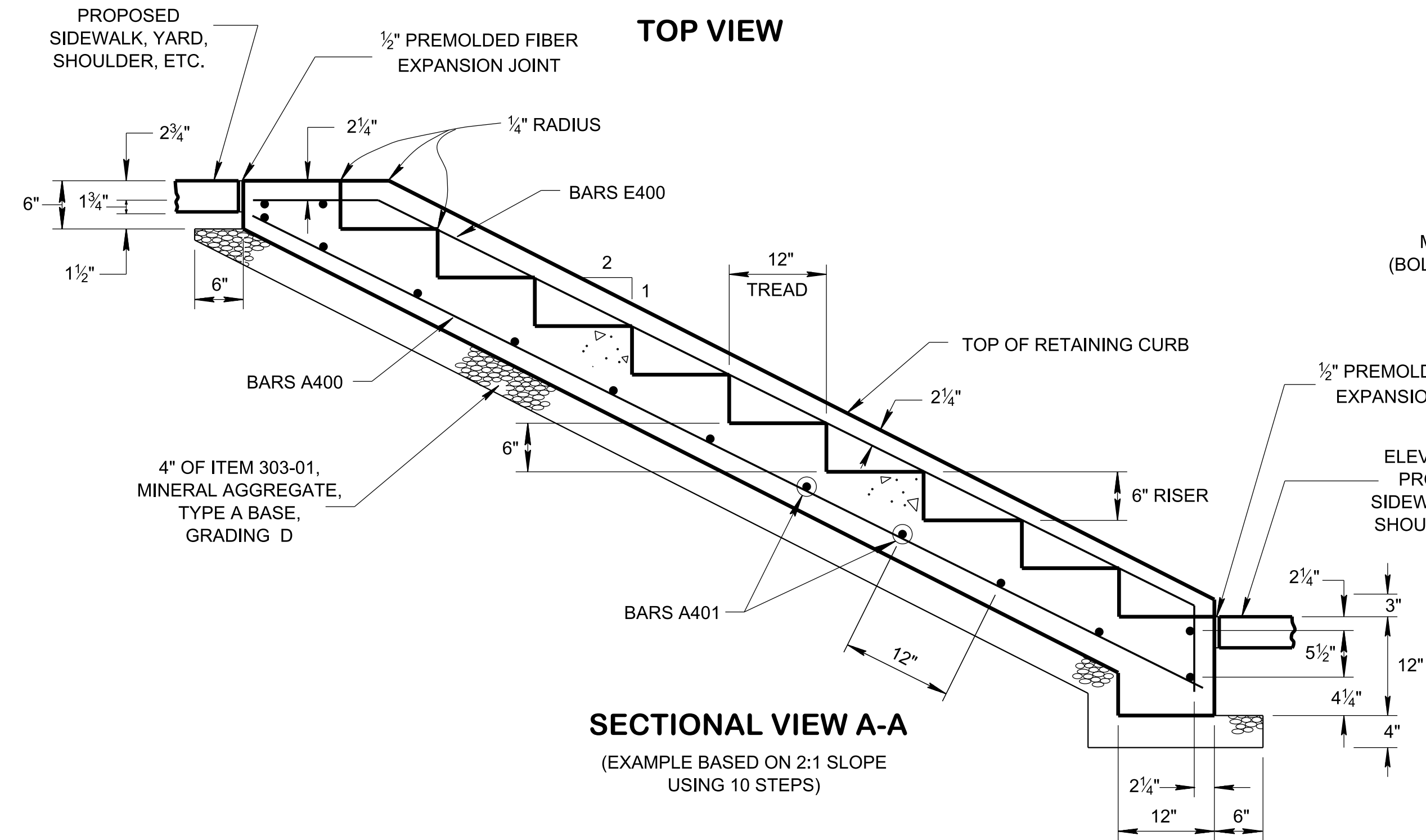
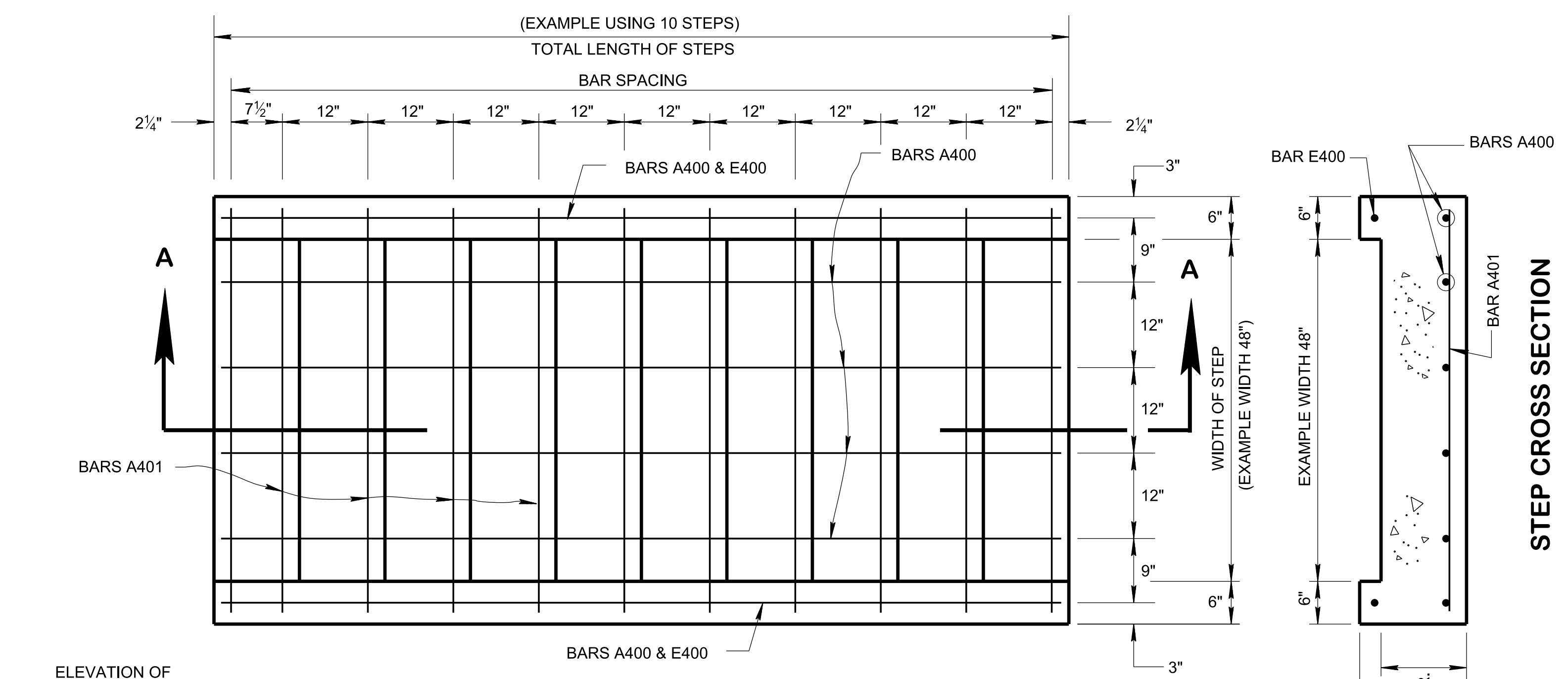


2/14/2019 10:24:10 AM  
 C:\Users\jj00547\Desktop\TDOT Multimodal Drawing Update\MMPS1-20190107.dgn



**CONCRETE STEP GENERAL NOTES**

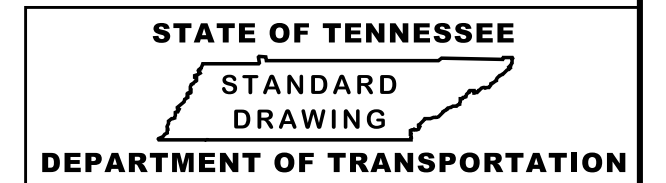
- (C1) FOR SPECIFICATIONS SEE "STANDARD SPECIFICATIONS FOR ROAD AND BRIDGE CONSTRUCTION" OF THE TENNESSEE DEPARTMENT OF TRANSPORTATION.
- (C2) CONCRETE STEPS MAY BE CAST IN PLACE OR PRECAST. ALL CONCRETE CAST IN PLACE TO BE CLASS "A". ALL PRECAST TO BE 4000 POUNDS PER SQUARE INCH.
- (C3) ALL EXPOSED EDGES ARE TO BE ROUNDED USING A QUARTER INCH RADIUS.
- (C4) THE TREAD IS TO BE TWELVE INCHES DEEP, THE RISER HEIGHT IS TO BE VARIED SO AS TO CONFORM TO THE PROPOSED SLOPE. A MAXIMUM RISER HEIGHT OF SEVEN INCHES IS NOT TO BE EXCEEDED.
- (C5) CONCRETE JOINT MATERIAL TO BE 1/2" PREMOLDED FIBER IN ACCORDANCE WITH SECTION 905 OF THE STANDARD SPECIFICATIONS. COST OF JOINT MATERIAL WILL BE INCLUDED IN THE COST OF OTHER ITEMS.
- (C6) ALL REINFORCING STEEL TO ADHERE TO SPECIFICATION ASTM A 615. ALL REINFORCING STEEL TO BE NO. 4 BARS.
- (C7) THE COST OF EXCAVATION BELOW LEVEL ON PROPOSED SLOPE TO BE INCLUDED IN THE COST OF OTHER ITEMS.
- (C8) PAYMENT FOR CONCRETE STEPS WILL BE MADE AS FOLLOWS

ITEM NO. 604-01.01	CLASS "A" CONCRETE (ROADWAY)	PER CUBIC YARD
ITEM NO. 604-01.02	STEEL BAR REINFORCEMENT (ROADWAY)	PER POUND

**HANDRAIL GENERAL NOTES**

- (H1) PIPE CROSS MEMBERS ARE TO ADHERE TO SPECIFICATION ASTM A 53 TYPE E OR S-GRADE A OR B.
- (H2) THE PIPE HANDRAIL IS TO BE PAINTED BLACK IN COLOR AND ADHERE TO FEDERAL SPECIFICATION TT-E-489H.
- (H3) THE PIPE HANDRAIL IS TO BE USED ONLY AS A PROTECTION FOR PEDESTRIANS AND SHOULD NOT BE PLACED IN ANY LOCATION WHERE IT MIGHT BE SUBJECT TO VEHICULAR IMPACT. FOR VEHICULAR PROTECTION STANDARD GUARD RAIL SHOULD BE USED.
- (H4) THE PIPE HANDRAIL IS TO BE PAID FOR UNDER ITEM NO. 604-01.04, 1 1/2" STEEL PIPE HANDRAIL PER LINEAR FEET.
- (H5) THE PIPE HANDRAIL SHALL BE REQUIRED WITH FIVE OR MORE STEPS AND WILL MEET THE FOLLOWING CONDITIONS:
  - ① ON STEPS LESS THAN 44 INCHES WIDE HAVING BOTH SIDES ENCLOSED, ONE HANDRAIL ON EACH SIDE.
  - ② ON STEPS LESS THAN 44 INCHES WIDE HAVING ONE SIDE OPEN, ONE HANDRAIL ON EACH SIDE.
  - ③ ON STEPS LESS THAN 44 INCHES WIDE HAVING BOTH SIDES OPEN, ONE HANDRAIL ON EACH SIDE.
  - ④ ON STEPS MORE THAN 44 INCHES WIDE BUT LESS THAN 88 INCHES WIDE, ONE HANDRAIL ON EACH SIDE
  - ⑤ ON STEPS 88 OR MORE INCHES WIDE, ONE HANDRAIL ON EACH SIDE, AND ONE INTERMEDIATE HANDRAIL LOCATED APPROXIMATELY MIDWAY OF THE WIDTH.

(Replaced Std Dwg RP-S-8)



**DETAILS FOR PEDESTRIAN STEPS AND HANDRAILS**