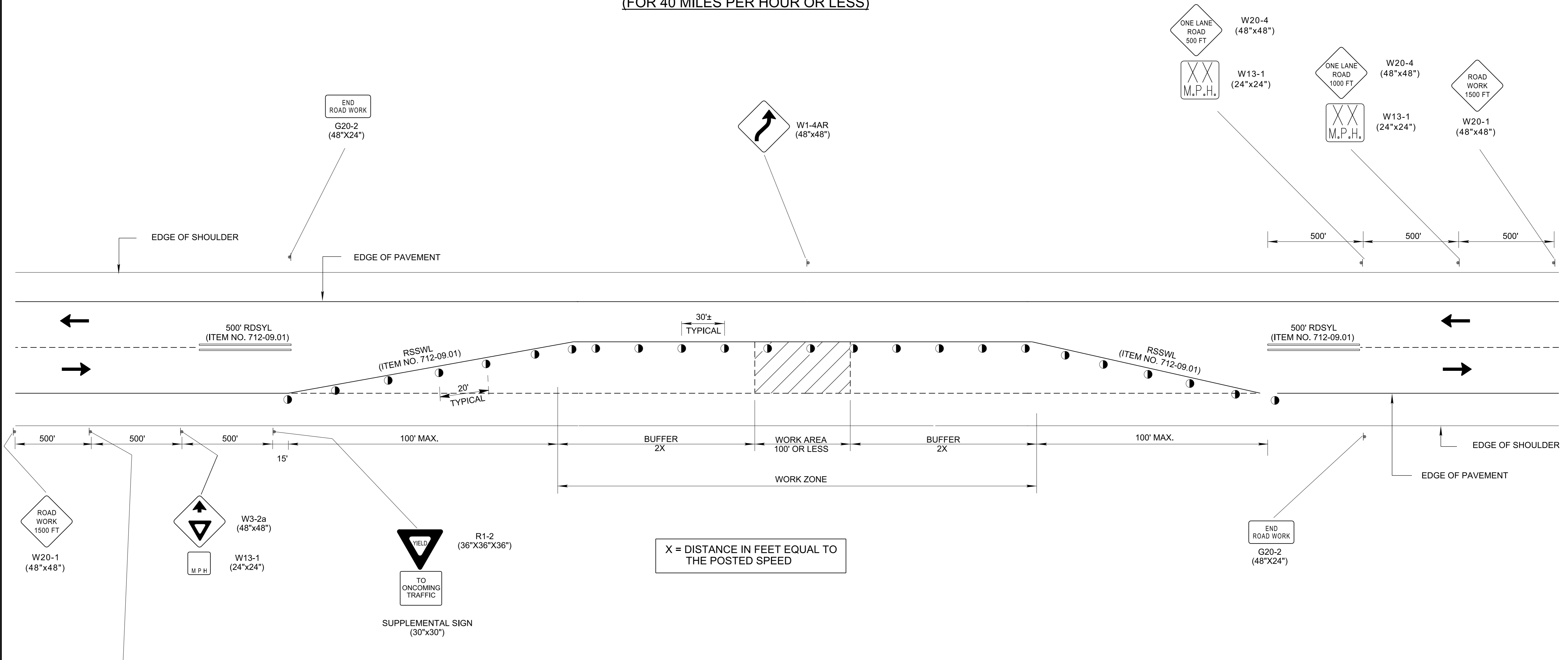


**TRAFFIC CONTROL FOR ONE LANE CLOSURE ON LOW VOLUME 2-LANE HIGHWAY  
(FOR 40 MILES PER HOUR OR LESS)**

- REV. 9-1-05: REMOVED TYPE "C" WARNING LIGHTS FROM FLEXIBLE DRUMS IN TAPER.
- REV. 4-2-12: ADDED 15' BETWEEN YIELD SIGN AND START OF TAPER, UPDATED G20-2A TO G20-2.
- REV. 03-05-17: ADDED ITEM NO. 712-09.01.
- REV. 4-15-99: MODIFIED CHANNELIZATION DEVICE LEGEND.
- REV. 12-18-99: ELIMINATED CONCRETE PORTABLE BARRIER WALL AND MODIFIED GENERAL NOTE (A).
- REV. 1-19-00: DELETED GENERAL NOTE (B).



X = DISTANCE IN FEET EQUAL TO THE POSTED SPEED

**GENERAL NOTES**

(A) THIS TRAFFIC CONTROL APPLICATION MAY BE USED WHEN CURRENT ADT IS 750 OR LESS, POSTED SPEED OF 40 MPH OR LESS, WORK AREA IS 100' OR LESS, AND SIGHT DISTANCE MUST BE SUFFICIENT WHERE DRIVERS FROM BOTH DIRECTIONS CAN SEE APPROACHING TRAFFIC THROUGH AND BEYOND THE WORK SITE.

CHANNELIZATION DEVICE LEGEND	
	SIGN SUPPORT
	FLEXIBLE DRUMS
	DIRECTION OF TRAFFIC
	WORK SITE
RSSLW	REMOVABLE PAVEMENT MARKING (SINGLE SOLID WHITE LINE)
RDSYL	REMOVABLE PAVEMENT MARKING (DOUBLE SOLID YELLOW LINE)

□ MINOR REVISION -- FHWA APPROVAL NOT REQUIRED.

**STATE OF TENNESSEE  
DEPARTMENT OF  
TRANSPORTATION**

**LANE CLOSURE  
ON LOW-VOLUME  
2-LANE HIGHWAY**

28-APR-2017 14:02 \\AG03DCWF00008.net.ads.state.in.us\13\SHARED\StandDraw\DESIGN STANDARDS\StandDraw\Traffic Control\Work Zones\Current\TWZ36-20170305.DGN