

REV. 7-29-98: MODIFIED PLAN VIEW, SECTION B-B AND SECTION C-C.

REV. 9-5-98: MODIFIED GENERAL NOTES (A) AND (D).

(A) REV. 1-19-99: CHANGED TYPE OF MEDIAN BARRIER DELINEATORS AND MODIFIED GENERAL NOTES ACCORDINGLY.

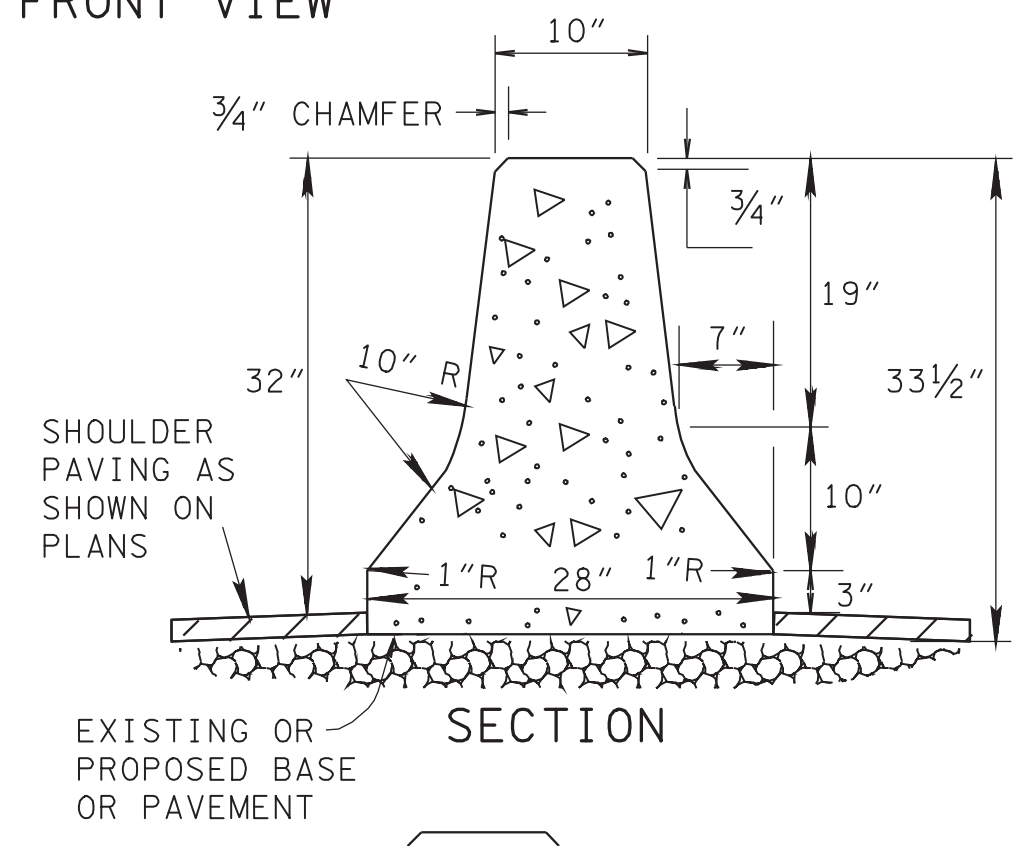
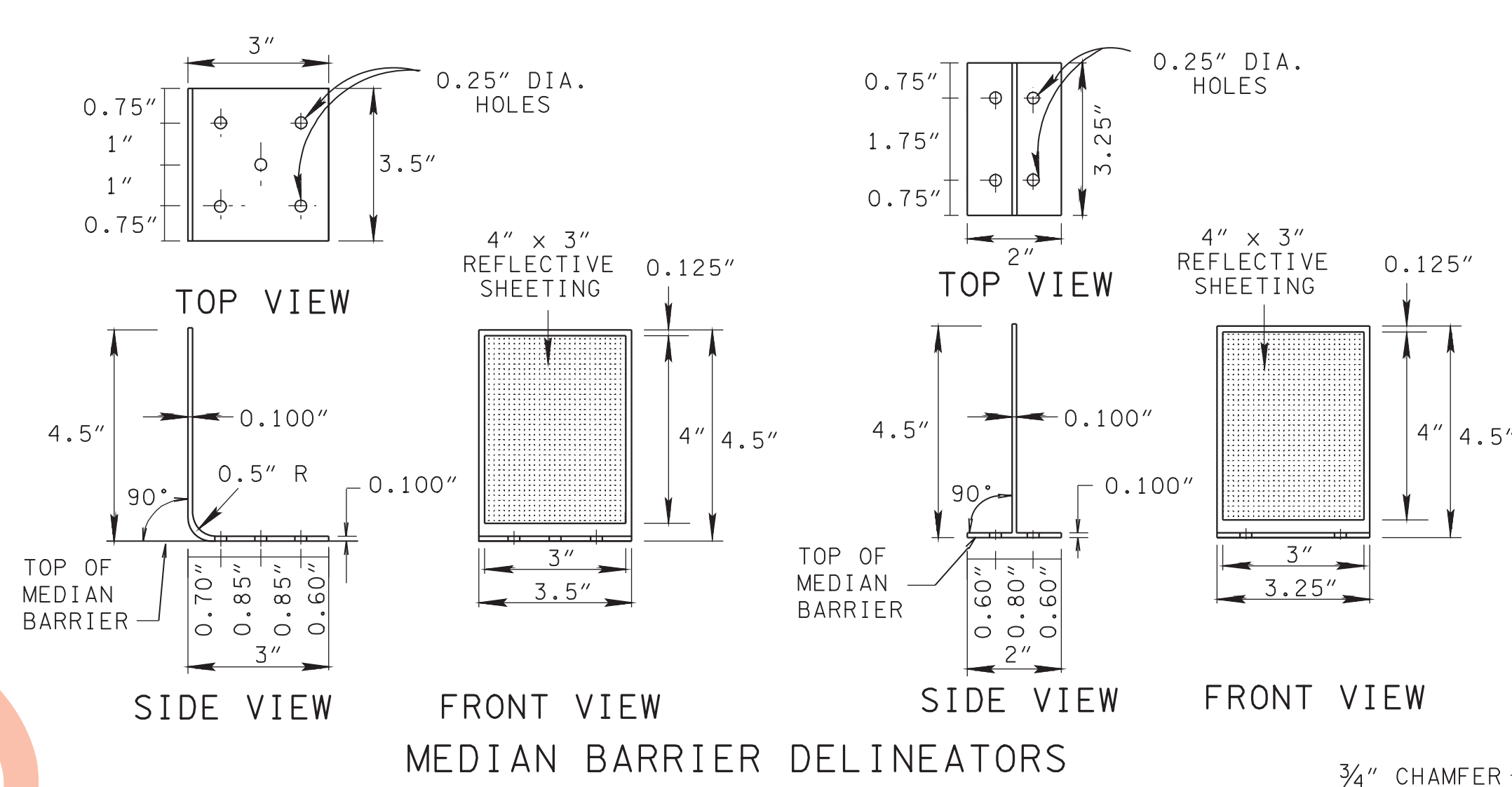
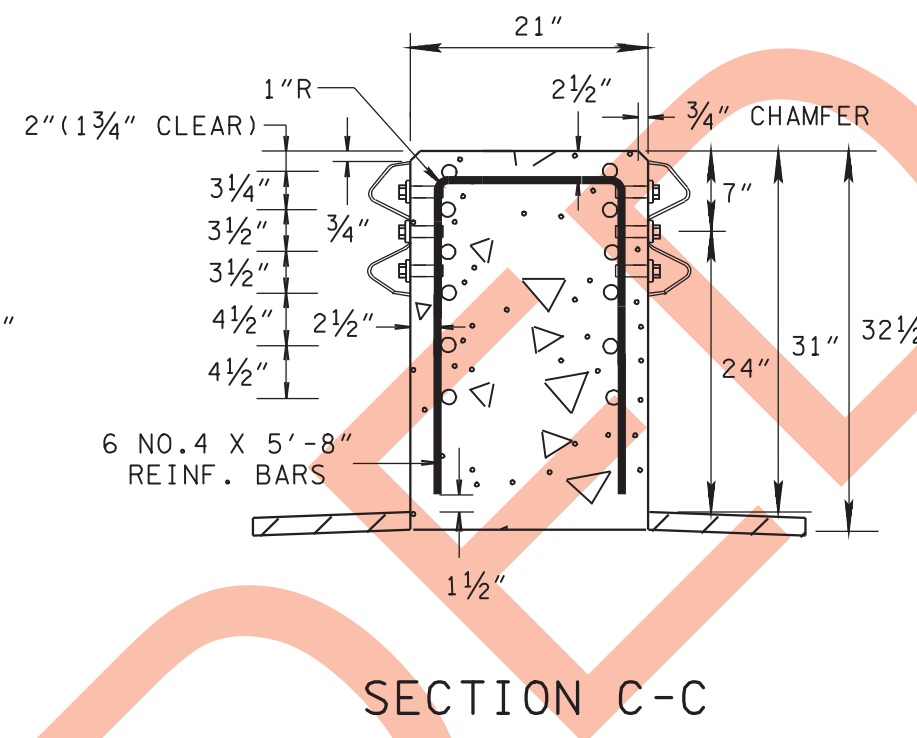
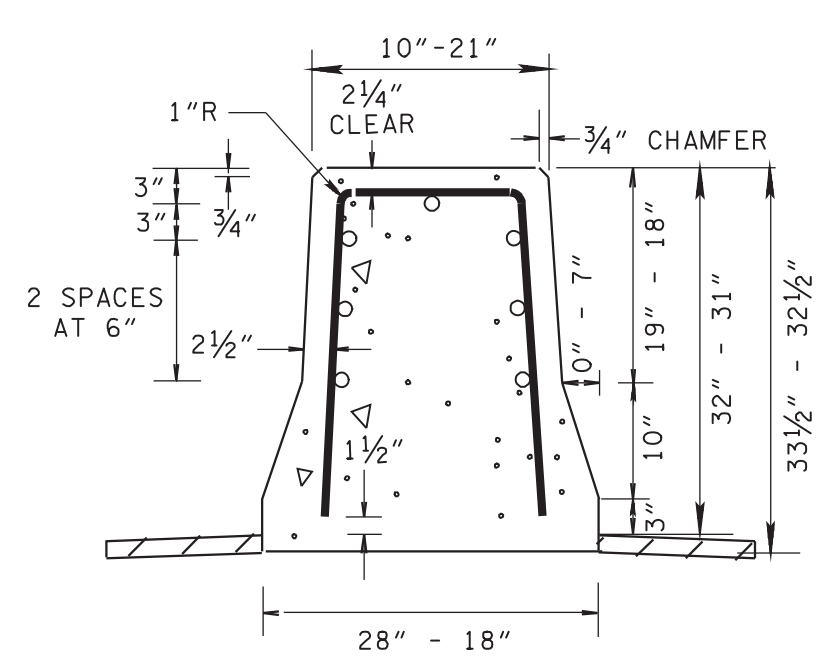
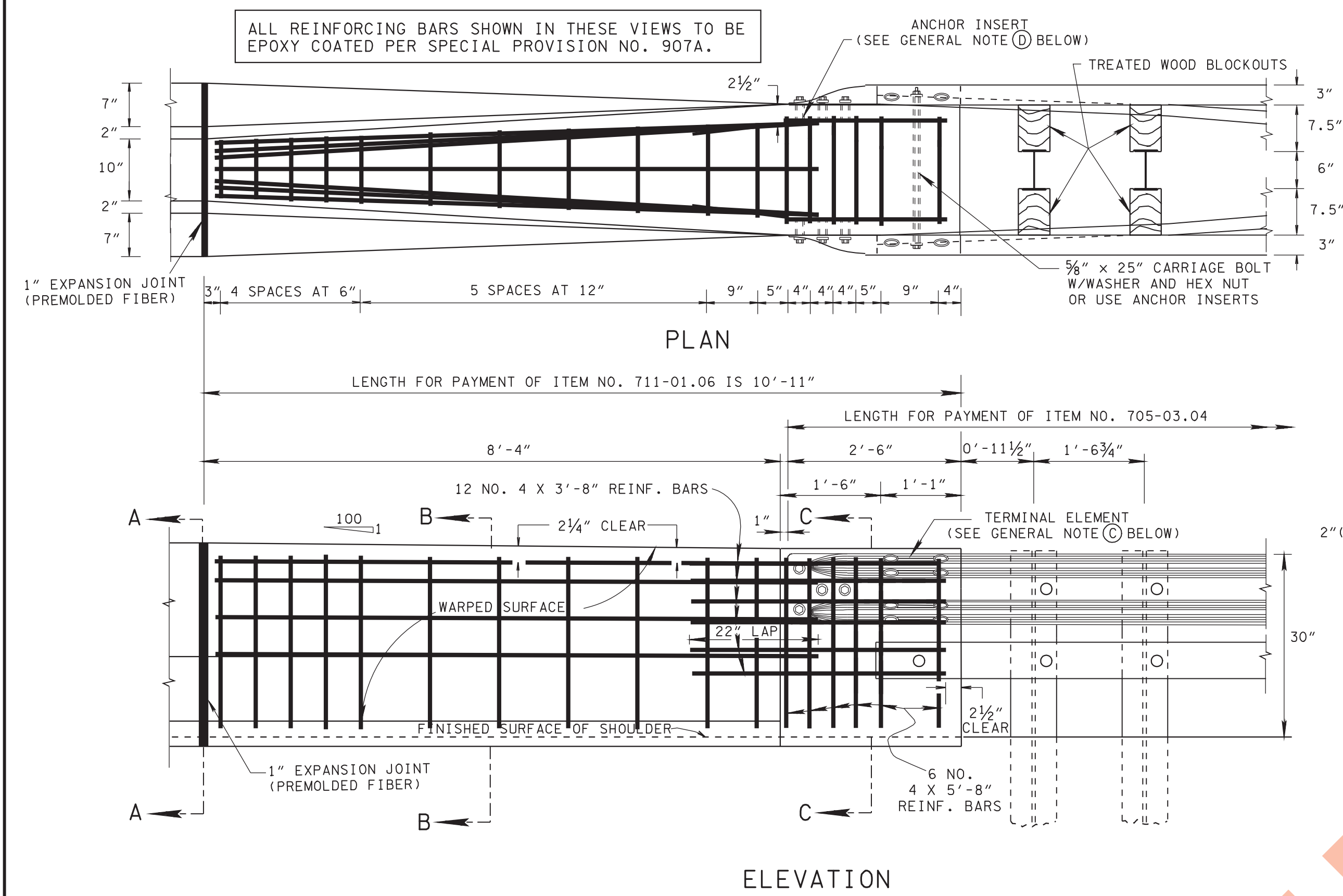
(B) REV. 5-27-99: MODIFIED DIMENSION ON SIDE VIEW OF LEFT GROUP OF MEDIAN BARRIER DELINEATORS.

(C) REV. 10-26-99: MODIFIED GENERAL NOTE (A).

(D) REV. 5-27-01: CHANGED ITEM NO. 705-01.06 TO 705-03.04 IN ELEVATION VIEW. CHANGED GENERAL NOTE (A).

(E) REV. 01-31-06: MODIFIED GENERAL NOTE (D).

(F) REV. 6-6-11: ADDED GENERAL NOTES (A).



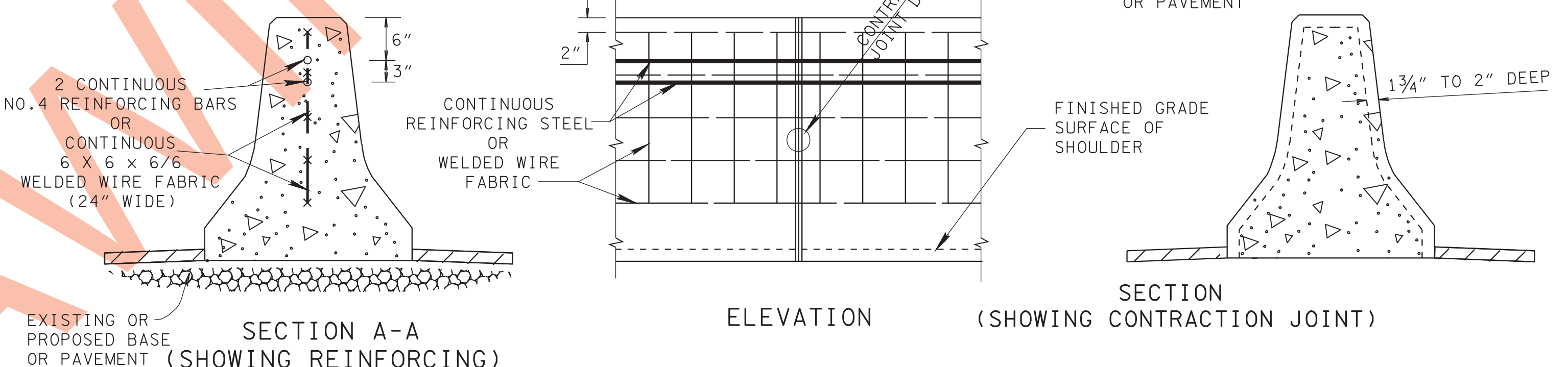
DETAIL OF TRANSITION FROM CONCRETE MEDIAN BARRIER TO METAL MEDIAN DIVIDER GUARDRAIL

MOUNTING DETAIL

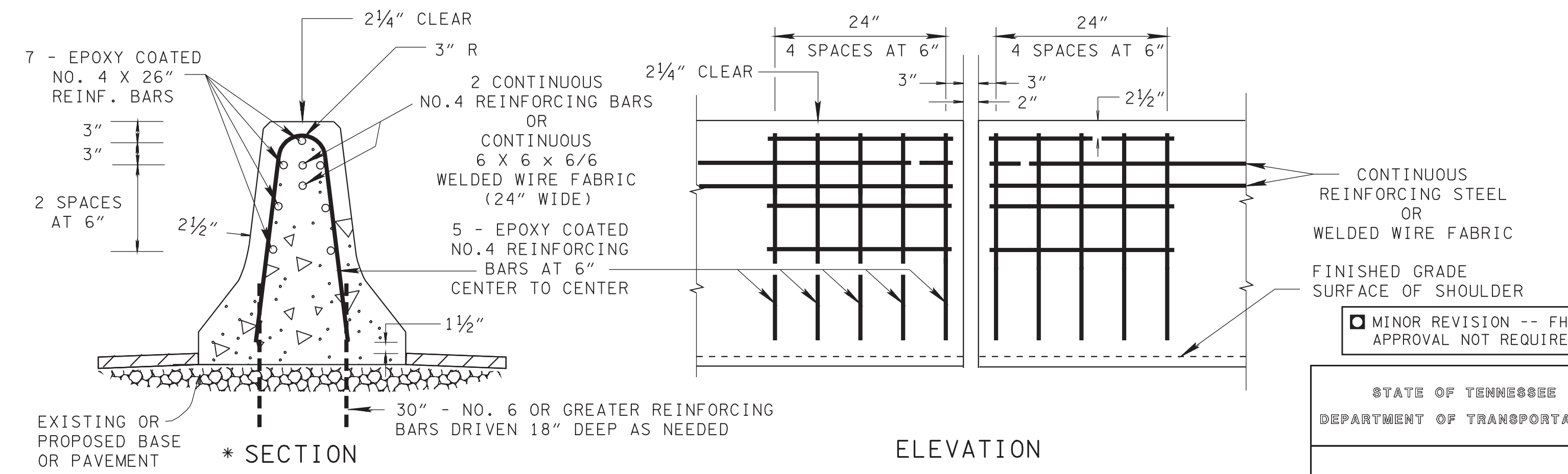
SECTION

GENERAL NOTES

- (A) CONCRETE MEDIAN BARRIER SHALL BE CONSTRUCTED IN ACCORDANCE WITH THE STANDARD SPECIFICATIONS FOR ROAD AND BRIDGE CONSTRUCTION, SECTION 711 AND/OR THE SPECIAL PROVISIONS.
- (B) SEE STANDARD DRAWING S-GR-20 FOR DETAILS OF MEDIAN DIVIDER GUARDRAIL AND FOR TERMINATING CONCRETE MEDIAN BARRIER.
- (C) SEE STANDARD DRAWING S-GR-15 FOR DETAILS OF TERMINAL ELEMENT FOR ANCHOR BLOCK AND BRIDGE CONNECTIONS.
- (D) SEE GENERAL NOTES ON STANDARD DRAWING S-GR-19 FOR REQUIREMENTS OF ANCHOR INSERTS.
- (E) IF SAWED CONTRACTION JOINTS ARE USED, THE JOINTS MUST BE SAWED WITHIN FOUR (4) HOURS AFTER THE CONCRETE IS PLACED UNLESS DUE TO COOL WEATHER THE ENGINEER EXTENDS THIS TIME PERIOD. IN NO CASE WILL THE TIME PERIOD BE LONGER THAN EIGHT (8) HOURS.
- (F) THE CONTRACTION JOINTS ARE TO BE SPACED AT 20 TO 25 FOOT INTERVALS WHEN CONSTRUCTED ON ASPHALT PAVEMENT. WHEN THE CONCRETE MEDIAN BARRIER IS ATTACHED TO CONCRETE PAVEMENT, THE CONTRACTION JOINTS WILL CORRESPOND TO THE JOINTS IN THE CONCRETE PAVEMENT. THE COST OF MATERIAL AND LABOR FOR THE JOINT INSTALLATION SHALL BE INCLUDED IN THE BID PRICE FOR CONCRETE MEDIAN BARRIER.
- (G) THE TWO (2) INCH OPEN EXPANSION JOINTS SHALL BE PLACED AT A MAXIMUM SPACING NOT TO EXCEED 400 FEET. IF FIXED OBJECTS SUCH AS BRIDGE PIERS, BRIDGE ENDS, OVERHEAD SIGN SUPPORTS, OR OTHER FEATURES PROJECTING THROUGH, INTO OR AGAINST THE BARRIER EXIST THAT REQUIRE TWO INCH OPEN EXPANSION JOINTS, THEN THE DISTANCE BETWEEN THE EXPANSION JOINTS IS TO BE REDUCED IN ORDER TO ALLOW AN EQUAL DISTANCE BETWEEN JOINTS THAT IS LESS THAN 400 FEET. ALL ADDITIONAL STEEL REQUIRED AT EXPANSION JOINTS TO BE EPOXY COATED REINFORCING STEEL. THE COST OF MATERIAL AND LABOR FOR THE JOINT INSTALLATION SHALL BE INCLUDED IN THE BID PRICE FOR CONCRETE MEDIAN BARRIER.
- (H) THE CONCRETE MEDIAN BARRIER SHALL BE GIVEN AN APPLIED TEXTURE FINISH. THE COLOR OF THE FINISH SHALL BE WHITE, FEDERAL SPECIFICATION NO. 37886. THE COST OF MATERIAL AND LABOR FOR THE TEXTURE FINISH SHALL BE INCLUDED IN THE BID PRICE FOR CONCRETE MEDIAN BARRIER.
- (I) MEDIAN BARRIER DELINEATOR REFLECTIVE SHEETING SHALL MEET ASTM D4956, TYPE V SPECIFICATIONS. DELINEATORS WITH DIMENSIONS OTHER THAN 4" X 3" MAY BE USED IF THE PRODUCT IS ON THE APPROVED PRODUCTS LIST. THE VARIATIONS IN DELINEATOR DIMENSION SHOULD NOT EXCEED ± 10%. DIFFERENT SIZE OR MANUFACTURED MEDIAN BARRIER DELINEATORS SHOULD NOT BE MIXED IN THE SAME LINE.
- (J) MEDIAN BARRIER DELINEATORS SHALL BE HIGH IMPACT, UV-STABILIZED, ENGINEERED THERMOPLASTIC OR POLYCARBONATE SUBSTRATE. SEE TDOT APPROVED QUALIFIED PRODUCT LISTS FOR ACCEPTABLE PRODUCTS.
- (K) MEDIAN BARRIER DELINEATORS WILL NOT BE REQUIRED IN AREAS WHERE ROADWAY IS LIGHTED.
- (L) SINGLE WHITE REFLECTIVE SHEETING WILL BE SUBSTITUTED FOR THE DOUBLE YELLOW REFLECTIVE SHEETING WHEN TRAFFIC ON EACH SIDE OF THE BARRIER IS GOING IN THE SAME DIRECTION.
- (M) THE COST OF FURNISHING AND INSTALLING MEDIAN BARRIER DELINEATORS, INCLUDING ALL MATERIALS, LABOR, AND INCIDENTALS NECESSARY TO COMPLETE THE INSTALLATION, SHALL BE INCLUDED IN BID PRICE FOR CONCRETE MEDIAN BARRIER.
- (N) MEDIAN BARRIER DELINEATORS SHALL BE MOUNTED TO THE CONCRETE MEDIAN BARRIER WITH A ONE COMPONENT ADHESIVE AS RECOMMENDED BY THE MANUFACTURER. THEY SHALL BE INSTALLED NO EARLIER THAN THREE WEEKS AFTER THE TEXTURE COATING HAS BEEN APPLIED.
- (O) ALONG TOP EDGES OF CONCRETE MEDIAN BARRIER THE CONTRACTOR MAY USE 3/4" RADIUS IN LIEU OF 3/4" CHAMFER SHOWN ON THIS DRAWING.
- (P) PAYMENT WILL BE MADE UNDER ITEM NO. 711-01, CONCRETE MEDIAN BARRIER, PER LINEAR FOOT AND ITEM NO. 711-01.06, CONCRETE MEDIAN BARRIER (TYING TO GUARDRAIL), PER LINEAR FOOT.
- (Q) ONLY DELINEATORS LISTED ON THE OPL, LIST 1. SECTION G.1 BARRIER WALL DELINEATION, MAY BE USED.



DETAILS OF REINFORCING AND CONTRACTION JOINT FOR CONCRETE MEDIAN BARRIER



DETAILS OF REINFORCING AT EXPANSION JOINT FOR CONCRETE MEDIAN BARRIER

STATE OF TENNESSEE
DEPARTMENT OF TRANSPORTATION

STANDARD
CONCRETE
MEDIAN BARRIER

22-FEB-2012 08:56 \\J0019033WF013.fdot.srce.fr.us\B\SHARED\S\randr-cw\STANDARD DRAWINGS\2012-MARCH DISTRIBUTION\smbl_060611.dgn