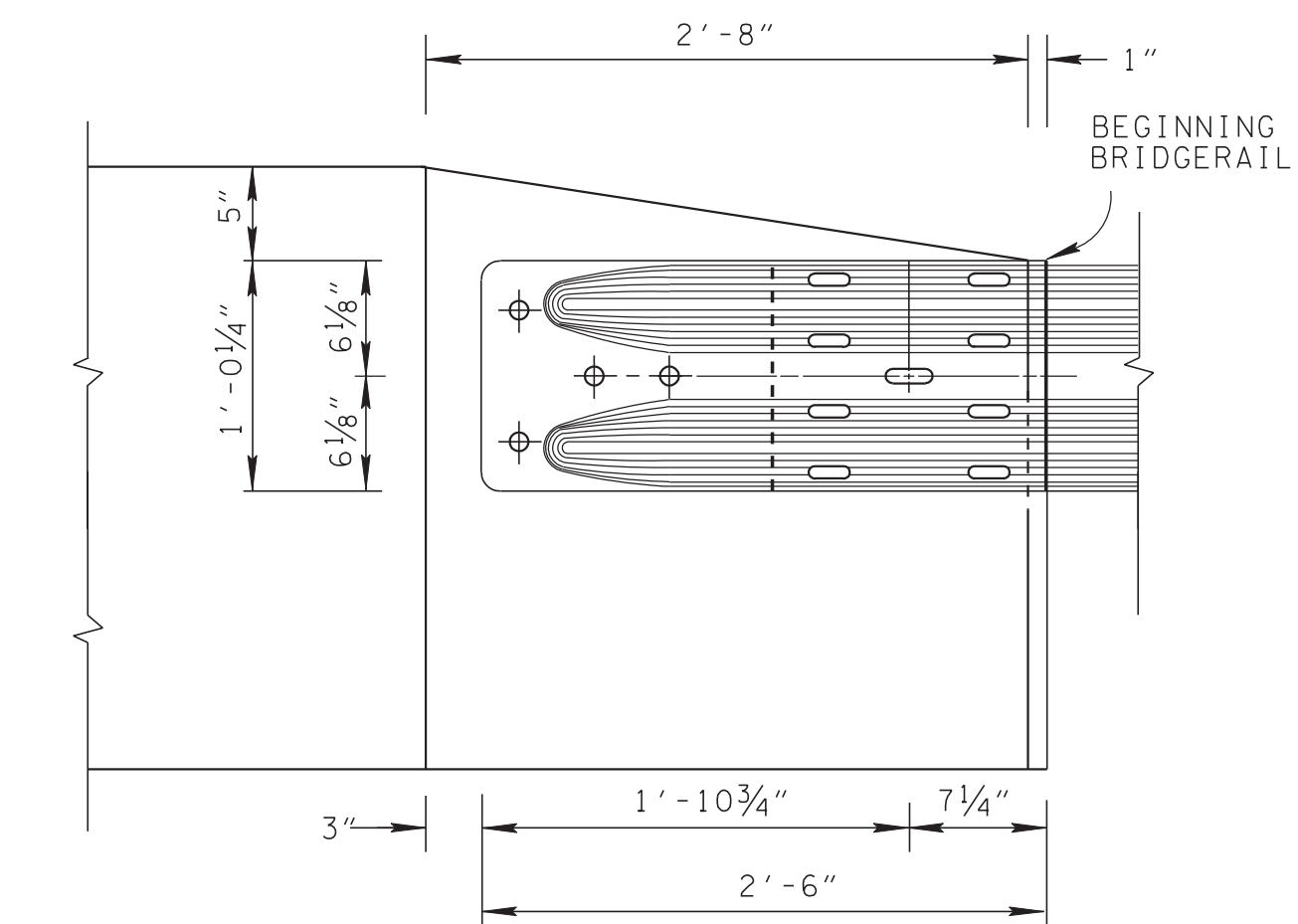
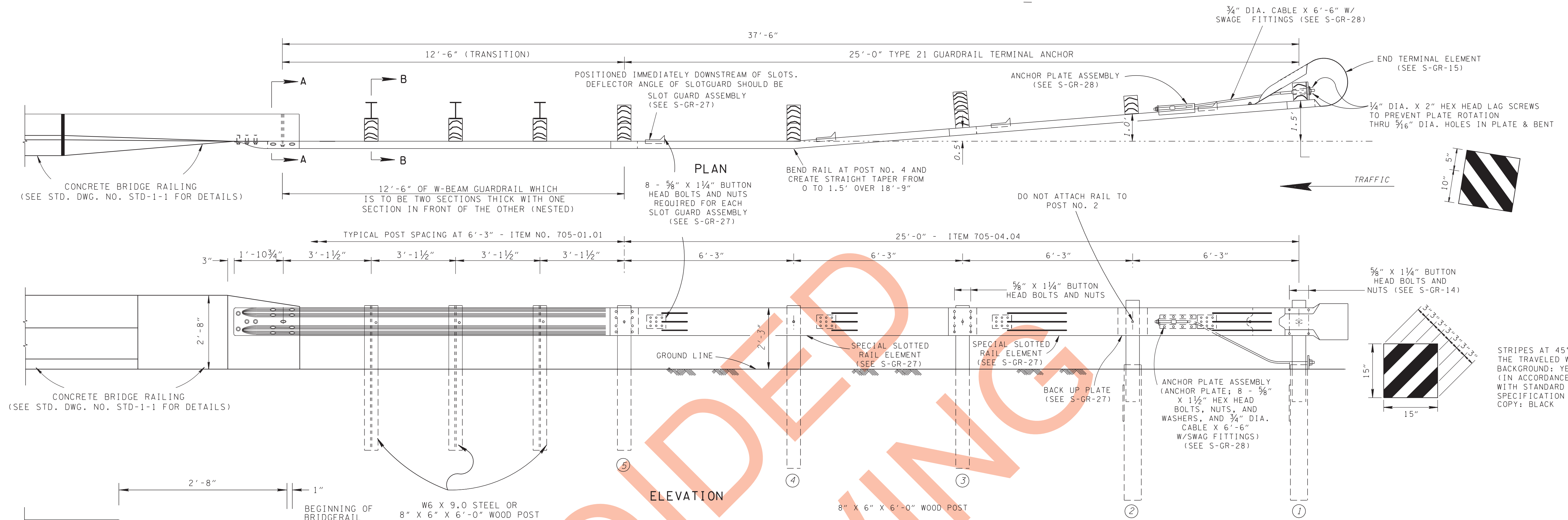
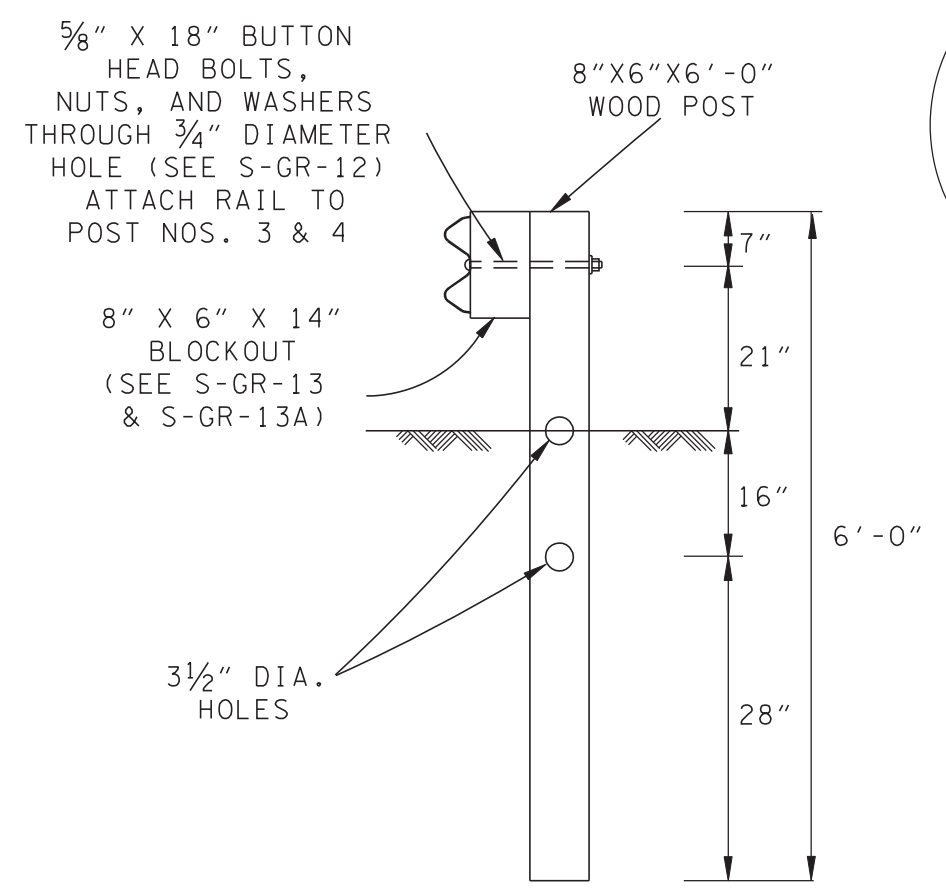


THIS DRAWING IS TO BE USED FOR LOW-VOLUME LOCAL ROADS (ADT < 400) ONLY

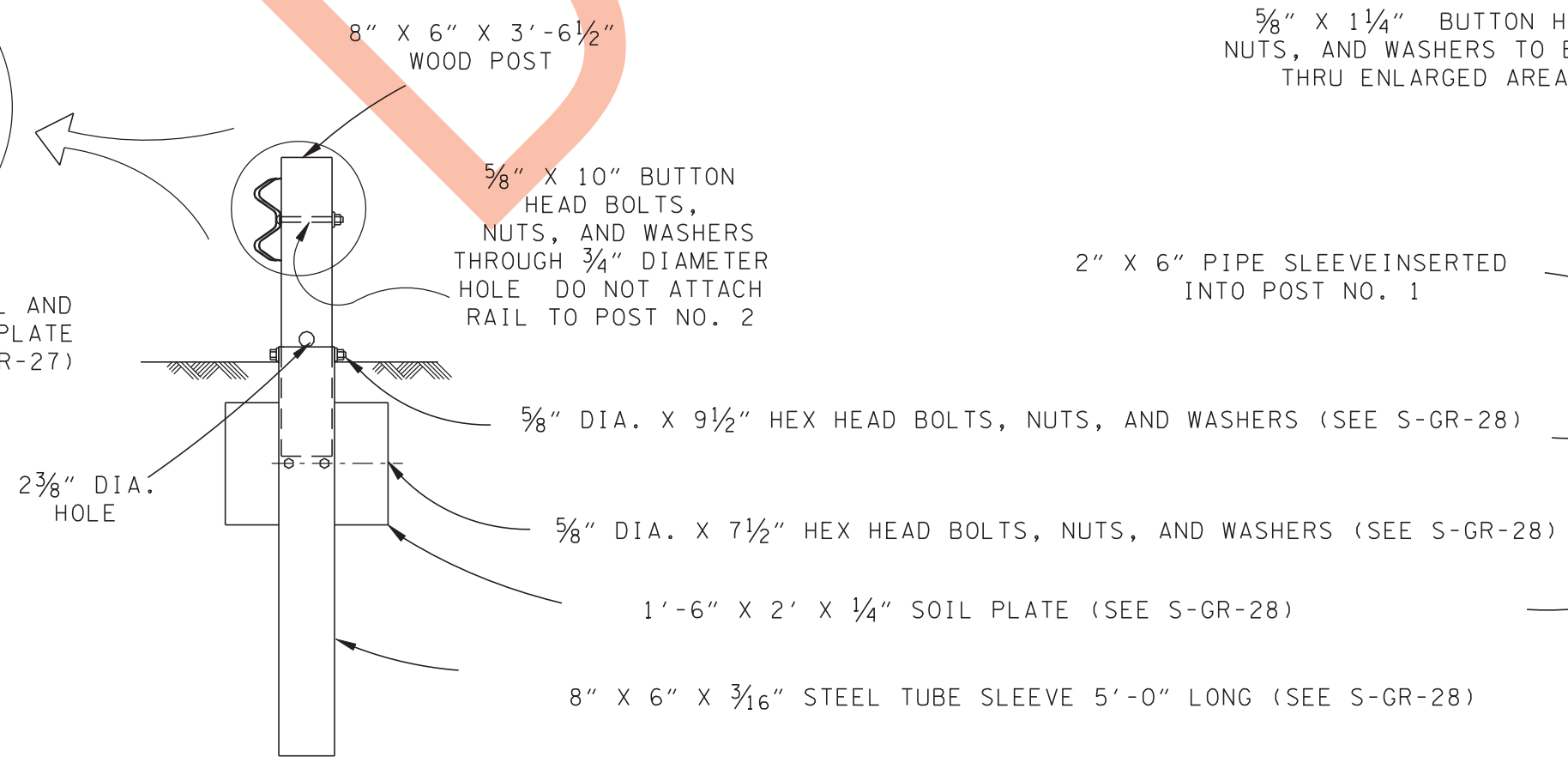


ENLARGED DETAIL FOR GUARDRAIL ATTACHMENT TO CONCRETE BRIDGERAIL (SEE S-GR-15 FOR TERMINAL DETAIL)

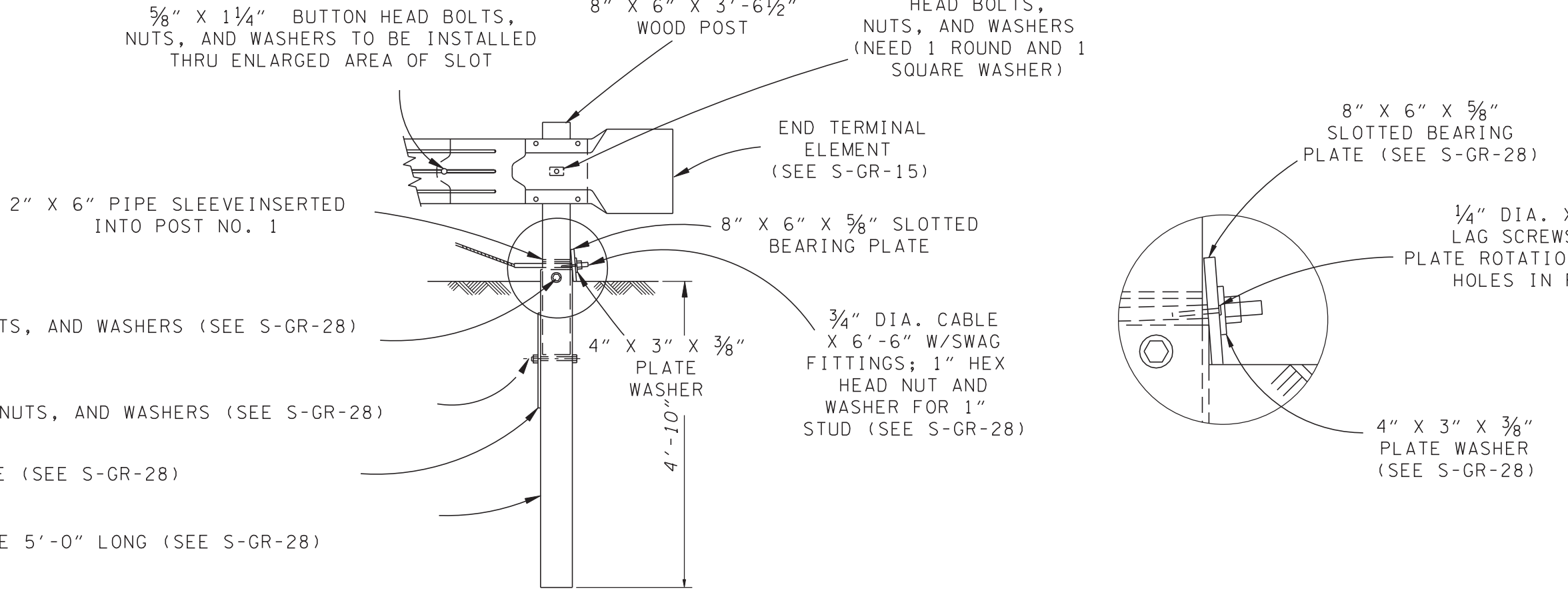
- ### GENERAL NOTES
- (A) SEE STANDARD DRAWING RD01-TS-1A FOR DETAILS AND SPECIFICATIONS REGARDING DESIGN STANDARDS FOR LOW-VOLUME LOCAL ROADS.
 - (B) THE POST OFFSET DIMENSIONS ARE GIVEN TO THE CENTER OF THE TRAFFIC FACE OF THE BLOCKOUTS, EXCEPT AT THE FIRST TWO POSTS, WHERE THE DIMENSION IS TO THE CENTER OF THE TRAFFIC FACE OF THE POST. OFFSET POINTS ARE TO BE LOCATED BY CHORD MEASUREMENTS AT THE BACK OF THE RAIL EQUAL TO THE NOMINAL POST SPACINGS SHOWN. POSTS ARE TO BE SET APPROXIMATELY RADIAL TO THE RAILINGS AT EACH POST LOCATION.
 - (C) OMIT THE RECTANGULAR WASHER BETWEEN BUTTON HEAD BOLT AND RAIL ON POST NOS. 2 THROUGH 5.



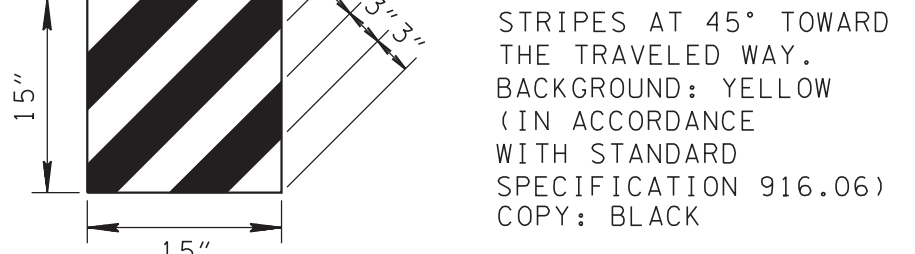
ELEVATION VIEW AT POST NOS. 3 & 4



ELEVATION VIEW AT POST NO. 2



ELEVATION VIEW AT POST NO. 1



STRIPES AT 45° TOWARD THE TRAVELED WAY. BACKGROUND: YELLOW (IN ACCORDANCE WITH STANDARD SPECIFICATION 916.06) COPY: BLACK