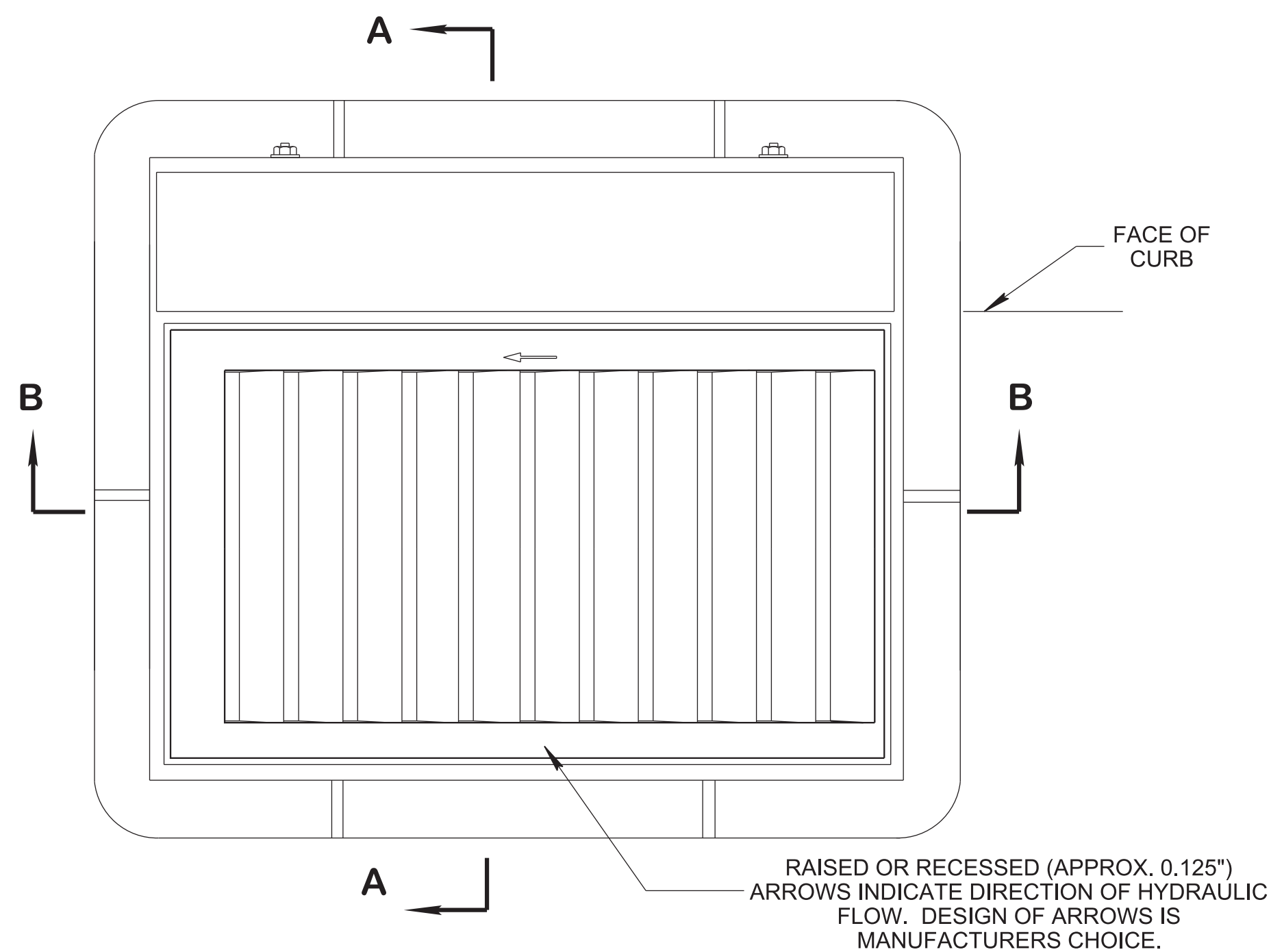
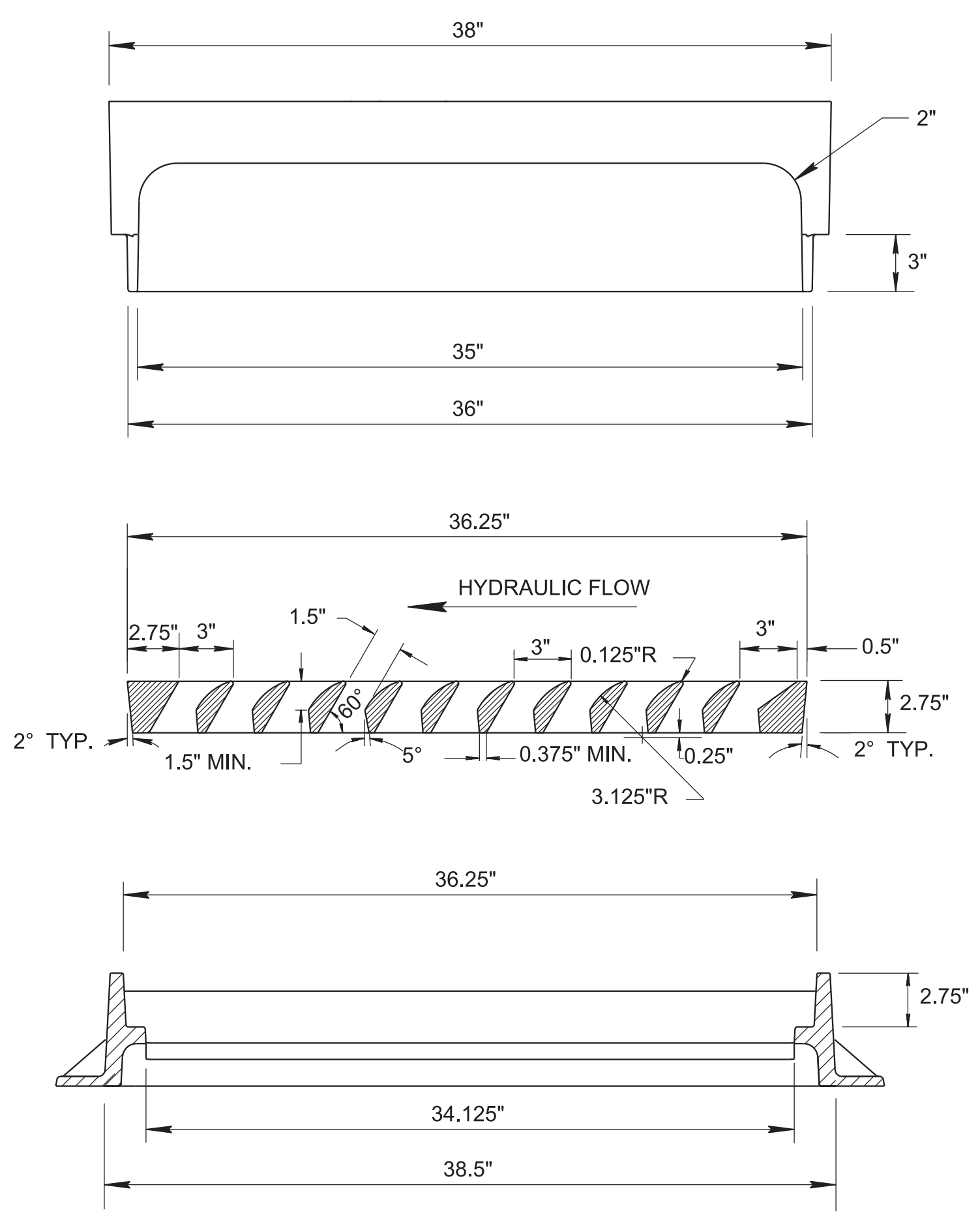


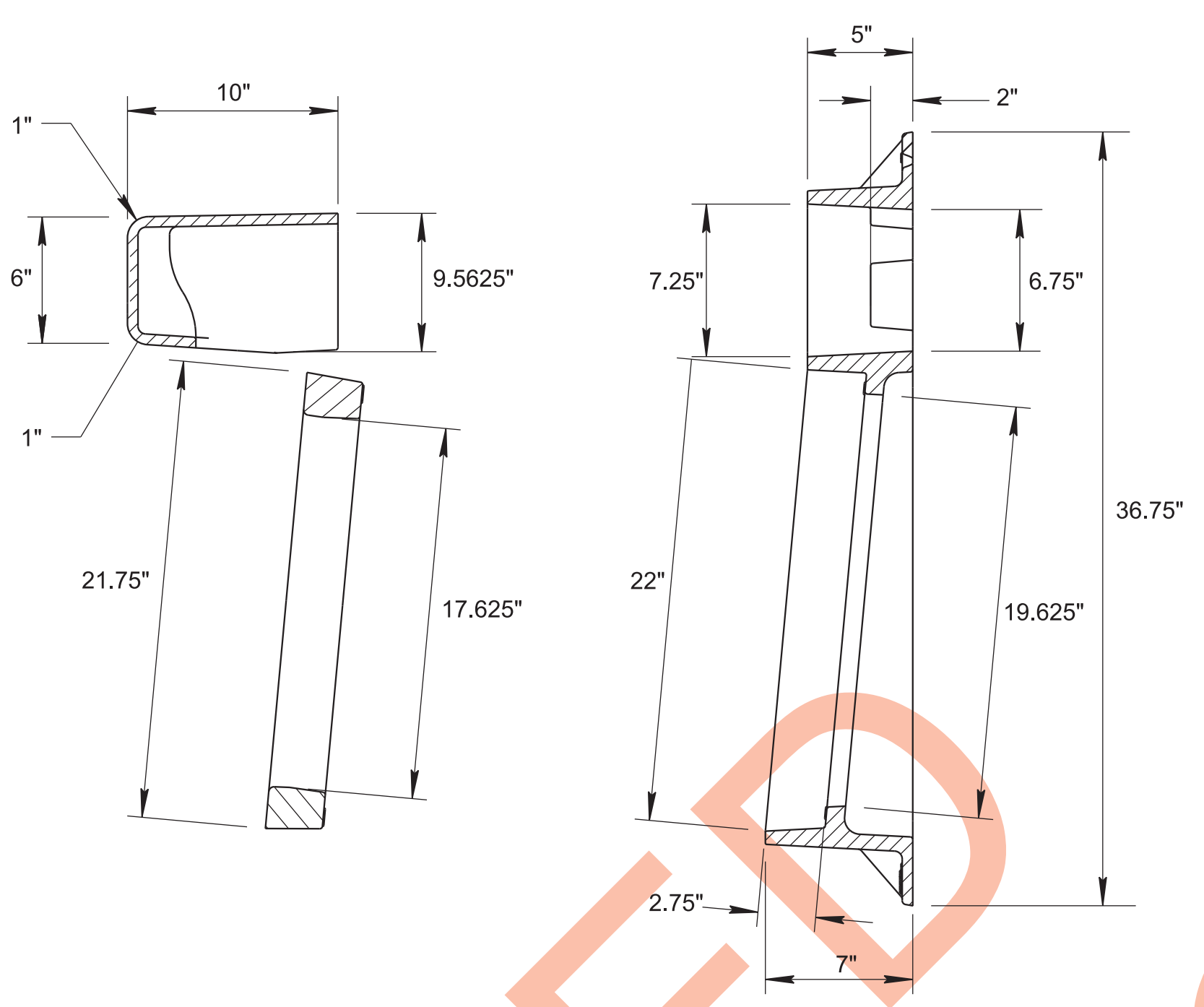
7/28/2021 10:11:36 AM P:\StandDraw\DESIGN STANDARDS\Standards Drawings Library\Standard Roadway Drawings - CURRENT\In Progress\10-102.00 Catch Basins and Manholes IP\DCBB12C20210728.dgn



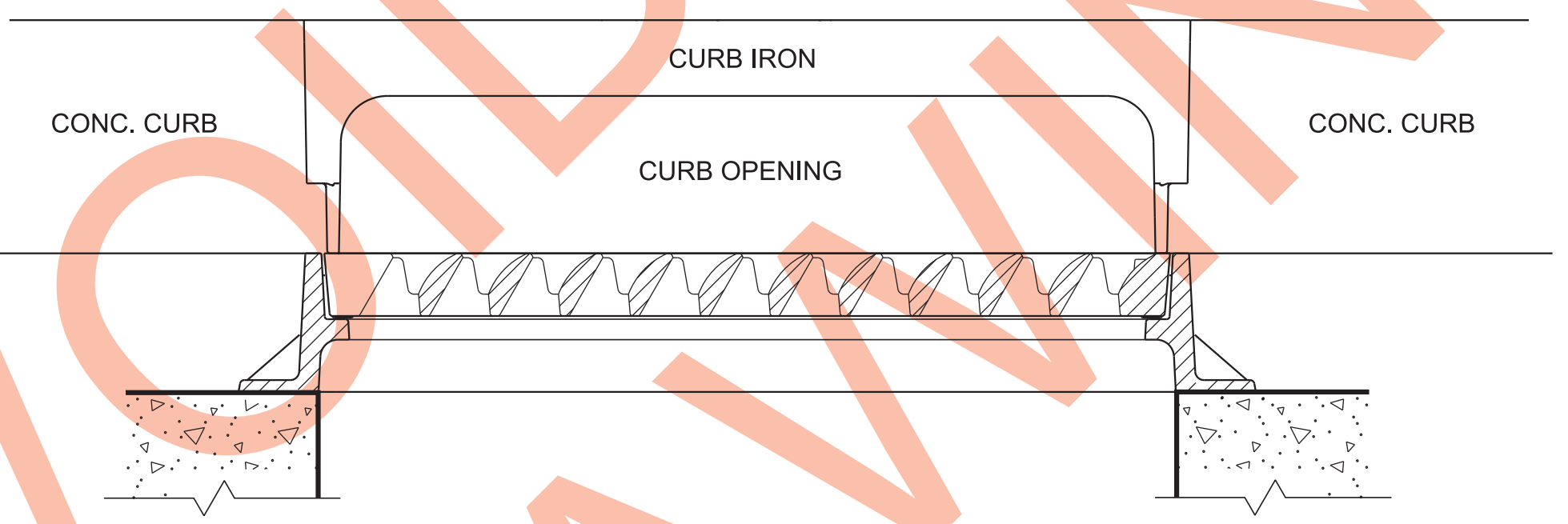
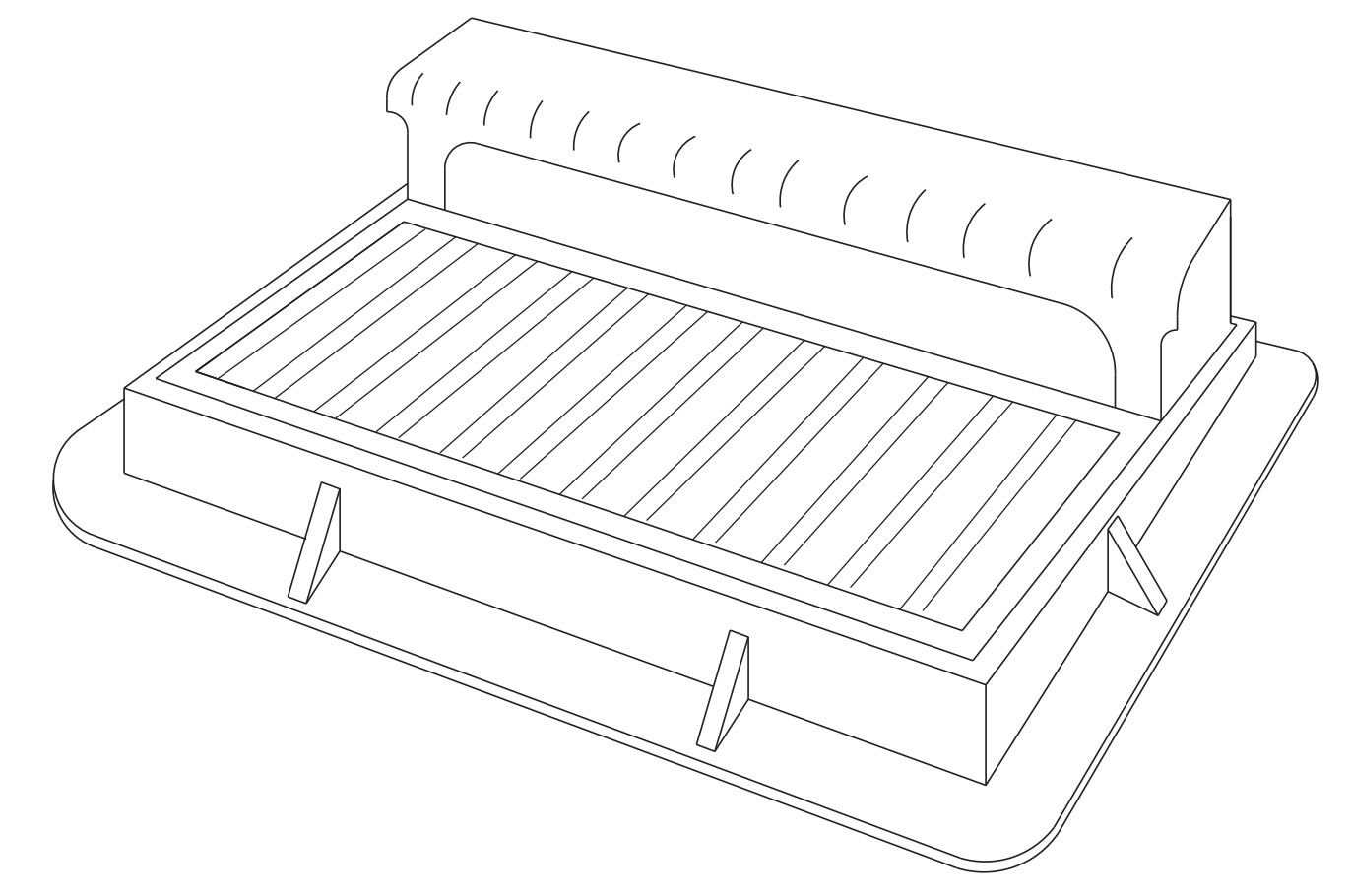
TOP VIEW



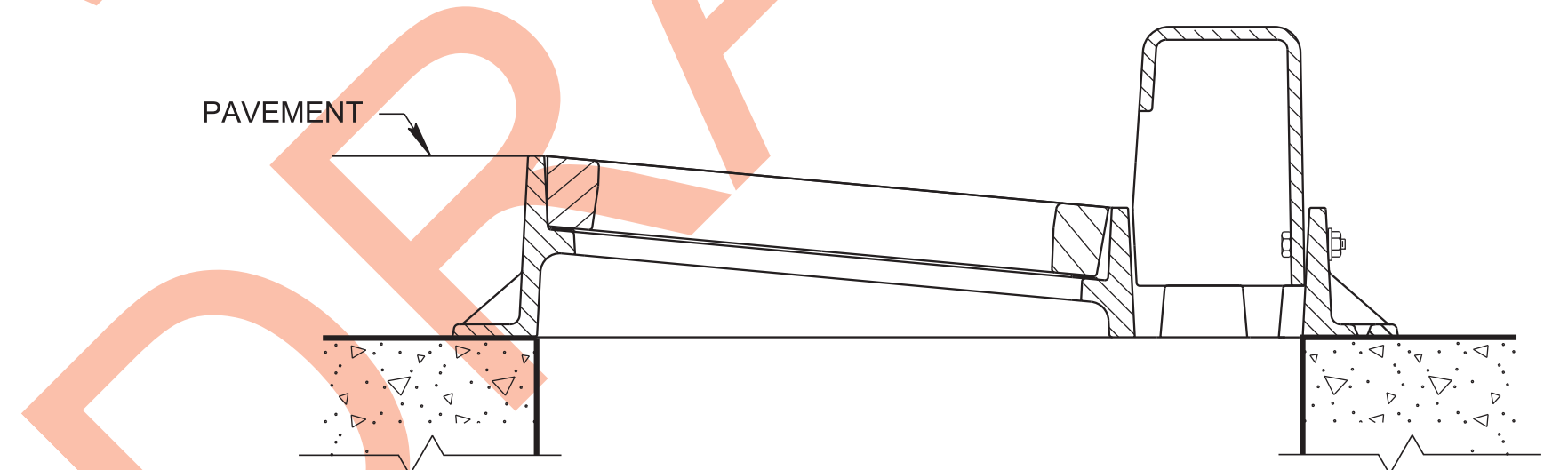
SECTION B-B



SECTION A-A



LONGITUDINAL SECTION



TRANSVERSE SECTION

- GENERAL NOTES**
- (A) WHEN A SIX (6) INCH VERTICAL CURB IS REQUIRED USE THIS DRAWING ON ALL VARIATIONS OF NUMBER 10, 12, 14, 16, AND 17 CATCH BASINS CONTAINED IN THIS SECTION OF THE STANDARD DRAWINGS.
 - (B) FOR CLEARNESS, ALL CORNERS ARE SHOWN ON THIS DRAWING BY STRAIGHT LINES WITH THE EXCEPTION OF THE 1" RADIUS AT THE TOP OF FACE OF CURB. ALL INSIDE CORNERS SHOULD BE MADE WITH 1/2" x 1/2" FILLETS OR 3/4" RADIUS FILLETS FOR EASE IN MOLDING.
 - (C) IF PAID FOR SEPARATELY CAST IRON USED IN CASTINGS IS TO BE PAID FOR UNDER ITEM NO. 611-03.04, GRAY IRON CASTINGS (CATCH BASIN), LB.
 - (D) IF CATCH BASIN IS PAID FOR UNDER EACH, THEN COST OF CAST IRON USED IN CASTINGS IS TO BE PAID FOR UNDER THE SPECIFIC ITEM BID FOR THAT CATCH BASIN. SEE STANDARD DRAWINGS FOR TYPE 10, 12, 14, 16, AND 17 CATCH BASINS FOR APPLICABLE PAY ITEMS FOR EACH TYPE OF CATCH BASIN.

STATE OF TENNESSEE
STANDARD
DRAWING
DEPARTMENT OF TRANSPORTATION

**TYPE "B" CAST IRON
FRAME, GRATE &
CURB HOOD DETAILS
FOR NOS. 10, 12, 14, 16 & 17
TYPE CATCH BASINS**

06-03-2021 D-CBB-12C