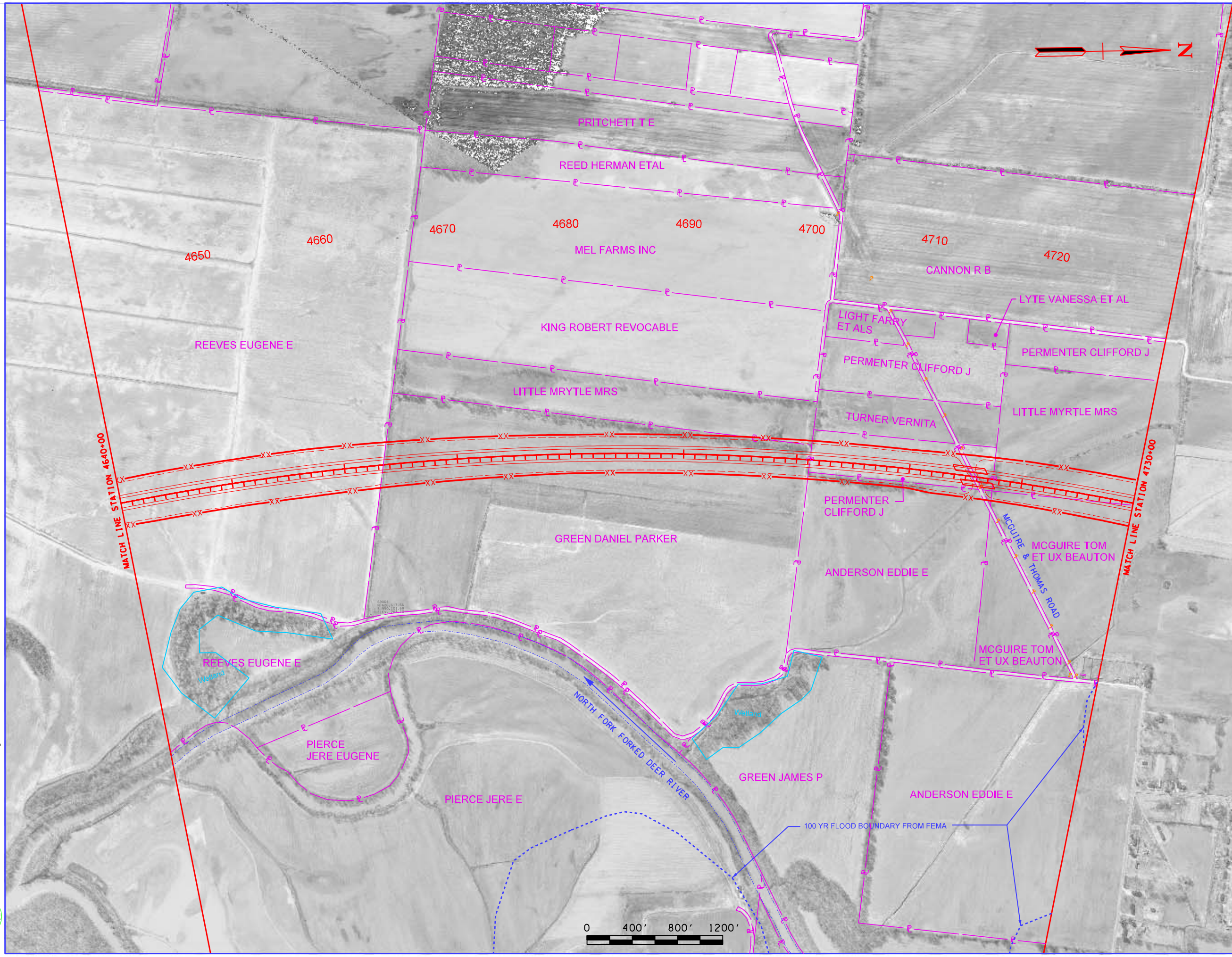


DATE	PROJECT NO.	SHEET NO.
TBA	NPCD-1-69 (3)	39

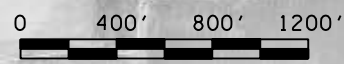


MATCH LINE STATION 4640+00

MATCH LINE STATION 4730+00

NORTH FORK FORKED DEER RIVER

100 YR FLOOD BOUNDARY FROM FEMA



7/11/2007
 J:\TDD\1-69\Plan\400_35West.dgn



STATE OF TENNESSEE
 DEPARTMENT OF TRANSPORTATION
 BUREAU OF PLANNING & DEVELOPMENT

I-69
 ALTERNATIVE R
 STA. 4640+00 TO STA. 4730+00