



**Build
With
Us**



TDOT
Department of
Transportation

TDOT Update: I-24 Southeast Choice Lanes

Transportation Modernization Board

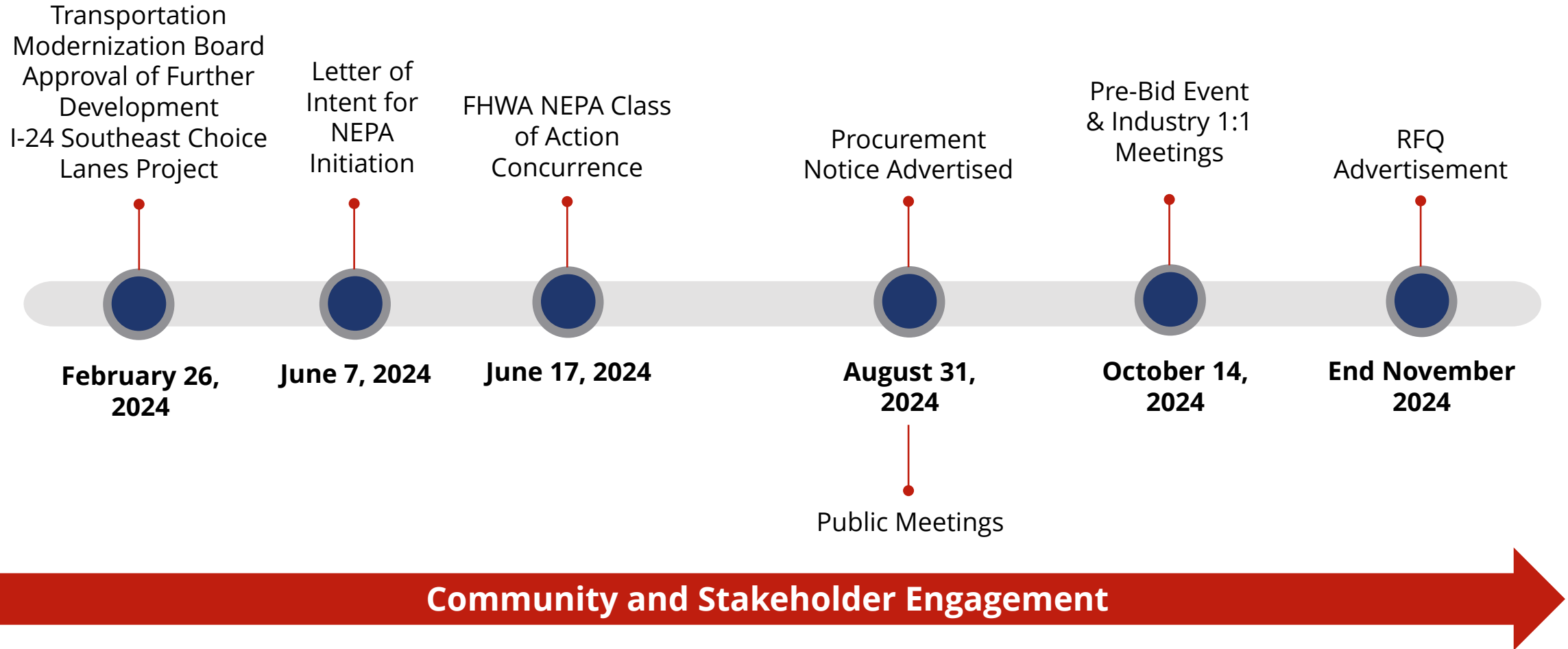
November 6, 2024

Table of Contents

TDOT Update: I-24 Southeast Choice Lanes

- NEPA and Design
- Communications
- Project and Procurement

Tennessee Choice Lanes Program Timeline



Pre-Bid Event and Industry 1:1 Meetings

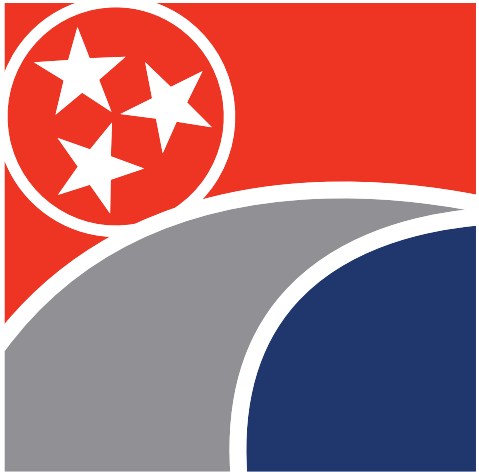


- Well attended event with diversity of the industry – construction, trucking, developers, financing, concessionaires
- Virtual component gave an expanded reach in the industry
- Impactful networking session



Industry Event: 312 Attendees
225 In person / 87 Virtual

Industry 1:1 Meetings: 8 Meetings
12 Developers / 11 Contractors



TDOT Update: I-24 Southeast Choice Lanes (NEPA and Design)

I-24 Southeast Choice Lanes Project NEPA and Design Timeline



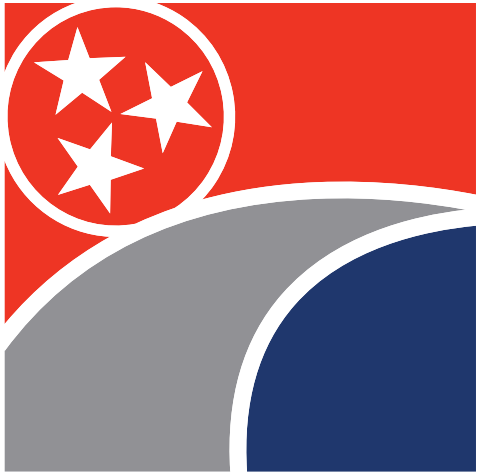
I-24 Southeast Choice Lanes Purpose and Need

PURPOSE

The purpose of the Project is to improve travel time reliability and regional connectivity issues along approximately 26 miles of I-24 between I-40 south of downtown Nashville and I-840 near Murfreesboro. The proposed project would address unreliable trip time for commuters, including those commuting via passenger vehicles or transit, regional connectivity issues and multimodal mobility.

NEED

The need for the Project is found in the unreliable trip times that affect regional connectivity and multimodal mobility along approximately 26 miles of I-24 between I-40 south of downtown Nashville and I-840 near Murfreesboro.

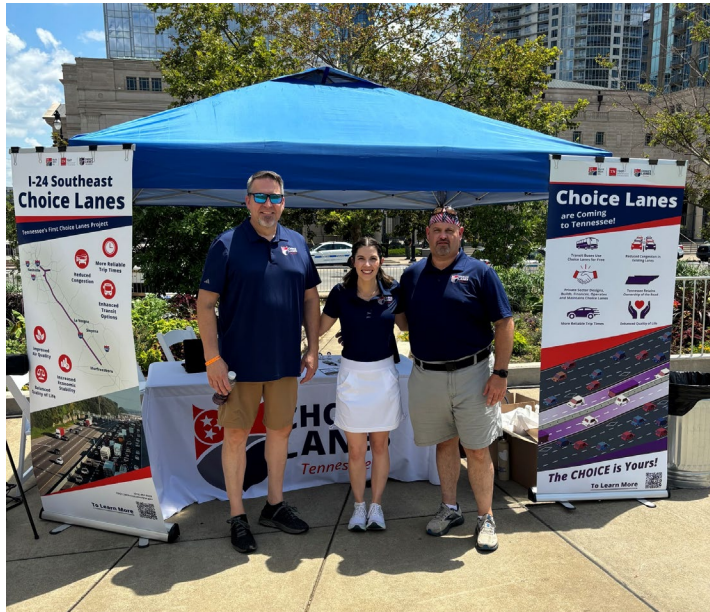


TDOT Update: I-24 Southeast Choice Lanes (Communications)

Robust Community and Stakeholder Engagement

Community Outreach / Pop-Up Events

SE Community Day, 4th July, Plaza Mariachi Back to School, Nashville Sounds Games, La Vergne Fall Festival, etc.



Nashville's Let Freedom Sing celebration downtown.

Stakeholder Engagement / Briefings:

- Partnership Briefings
 - WeGo
- Live Public Stakeholder briefings
 - Three live stream meetings
- Media Briefing Day
- Industry targeted Briefings
 - ACEC, GNRC, ITS, TAQI
- Municipalities
 - Smyrna, La Vergne, Nashville, Murfreesboro City Councils and elected officials

Public Meetings Held In August

- Virtual – August 14, evening
- Smyrna Event Center – August 21, 5-7 p.m.
- Nashville Fairgrounds – August 28, 5-7 p.m.
- Southeast Community Center – August 29, 11 a.m. – 6 p.m.
- Public Comment period: August 14 – September 19

516
Public
Comments



Common themes from public feedback:

- **Primary Focus: User Fee Education**
- **Right-of-Way** (general concern for property acquisition)
- **Public Transit** (positive reception of integrating Choice Lanes with the existing transit system)
- **Economic and Funding** (concern over the Choice Lanes only benefiting some roadway users)
- **Construction Impact** (timeline, increased congestion, lane closures)
- **Design** (accommodation for additional lanes, flood management)
- **Incident Response** (how Choice Lanes would be cleared if there is an incident)

On-going Community Engagement

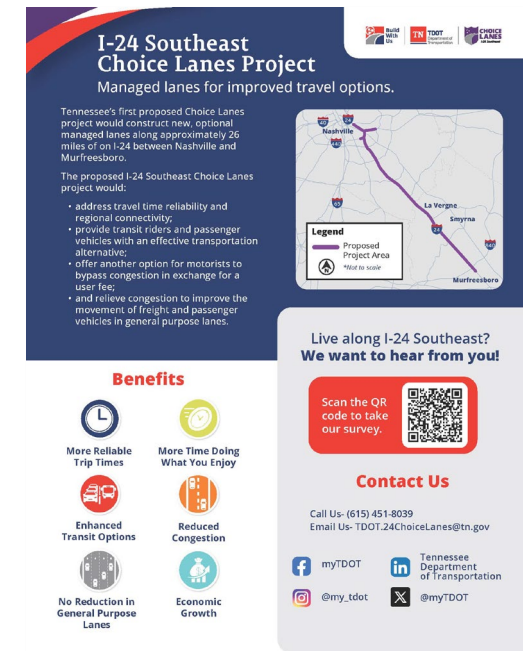
Prioritize Engagement in Directly Impacted Environmental Justice (EJ) Communities

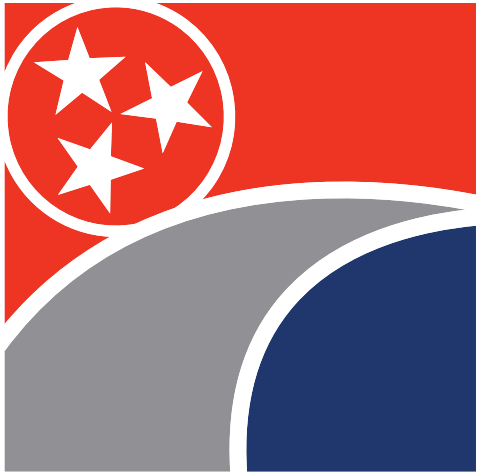
- Supporting engagement with culturally diverse communities like the Thompson Lane Park neighborhood
- Project-wide EJ community outreach regarding user fee impacts
- Collect information on how EJ communities feel they will be impacted by Choice Lanes and develop potential mitigation strategies informed by community input
- EJ business outreach around Bell Road Interchange

Targeted Community Outreach

- Community surveys at outreach events
- Project information at libraries
- Partnerships with community leadership and meetings to gather input on mitigation strategies
- Pop-up meetings throughout the community

- ✓ Community walks
- ✓ Targeted EJ community survey
- ✓ Summit with faith-based leaders
- ✓ Planned community meetings
- ✓ Planned engagement





TDOT Update: I-24 Southeast Choice Lanes (Project and Procurement)

I-24 Southeast Choice Lanes Facility

- The I-24 Southeast Choice Lanes NEPA Footprint
 - ~26 miles new Choice Lanes
 - Southern limit: just north of I-840
 - Northern limit: near Fesslers Lane (I-24/I-40) and TN-155/Briley Parkway (I-40)
- Environmental Assessment is ongoing, and an anticipated Finding of No Significant Impact (FONSI) in mid-2025 ⁽¹⁾

(1) NEPA limits extend from I-40 (between Browns Creek to Briley Parkway) to I-24/I-840 interchange, including the I-440 system to system interchange



I-24 Southeast Choice Lanes Project Responsibilities



TDOT

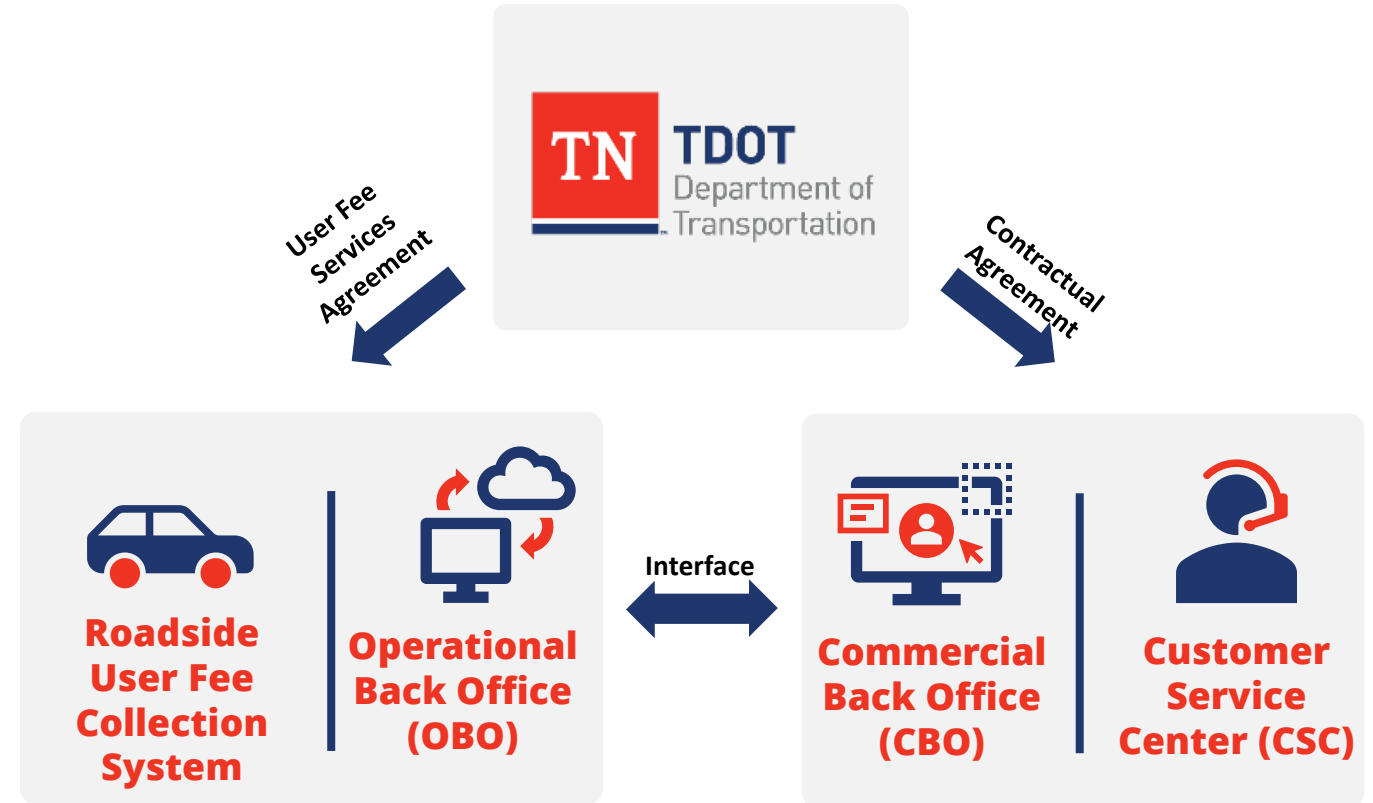
- Contracting Entity
- Project Sponsor and Manager
- Roadway Operation & Maintenance – General Purpose Lanes
- User Fee Authority
- Commercial Back Office & Customer Service Operations
- Violation Processing and Enforcement

Developer

- Financing
- Design & Construction
- Roadway Operation & Maintenance – Choice Lanes
- User Fee Roadside Systems
- User Fee Operational Back Office (i.e., Image Processing, Congestion Pricing, Trip Building)

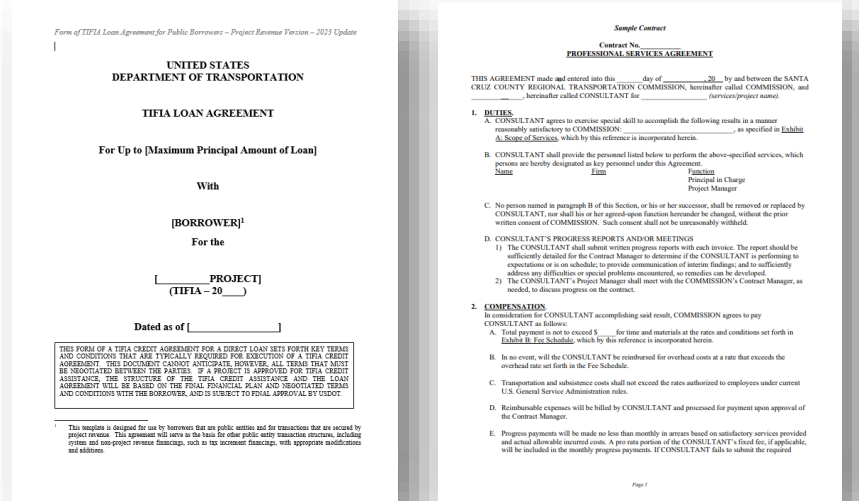
I-24 Southeast Choice Lanes CBO and CSC Approach

- TDOT will procure separately a statewide Commercial Back Office (CBO) and Customer Service Operations (CSC) vendor:
 - Separate contracts to manage the new statewide User Fee Back Office
 - TDOT to oversee contracts, setting and managing the strategies and policies for customer interactions
 - Developer will transmit transactions to TDOT's Back Office and be compensated the transponder user fee rate

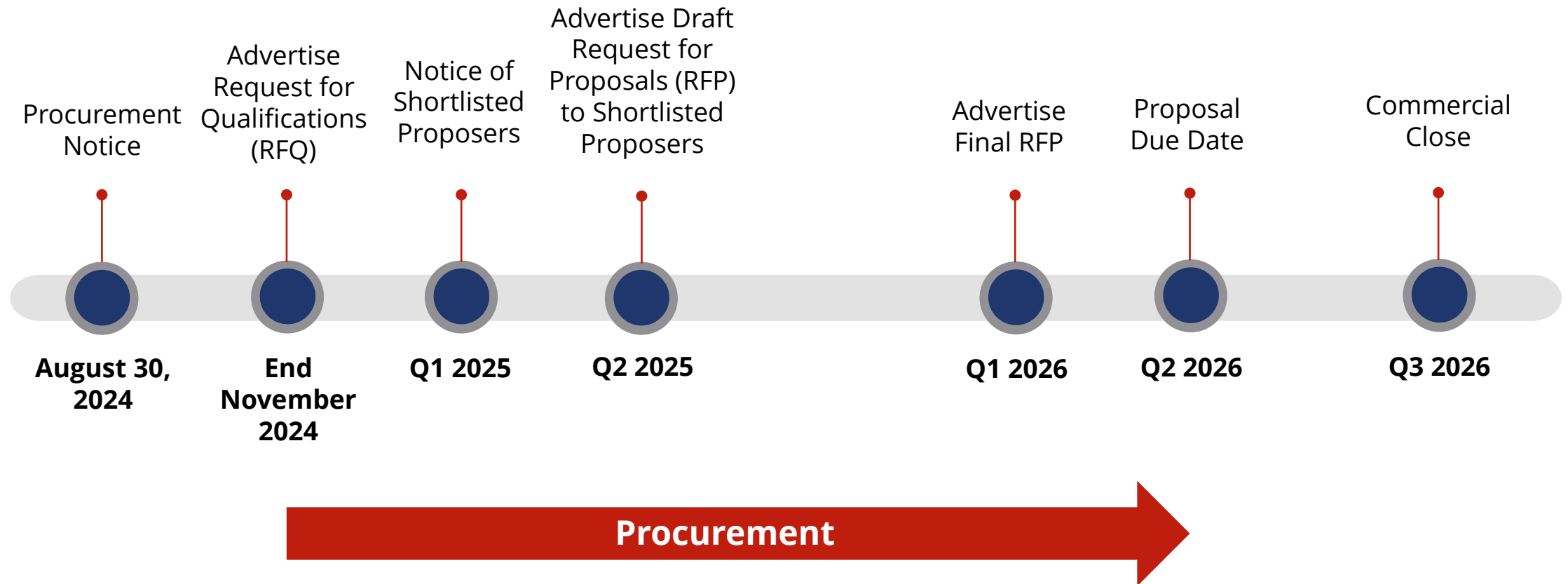


I-24 Southeast Choice Lanes Project Financing Considerations

- Developer will be responsible for structuring and securing non-recourse financing to support upfront construction, which could include developer equity and debt
- In coordination with the USDOT Build America Bureau, TDOT plans to seek, on behalf of the developer (i.e. no state debt):
 - An allocation of Private Activity Bonds (PABs)
 - A TIFIA loan which would be made available to the Developer
- Proposers will be required to provide financing commitments with compliant proposals and will be responsible for closing on these commitments at Financial Close



I-24 Southeast Choice Lanes Project Procurement Timeline*



**subject to change*