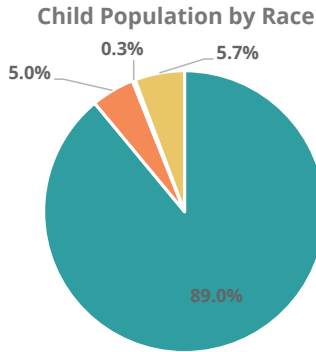
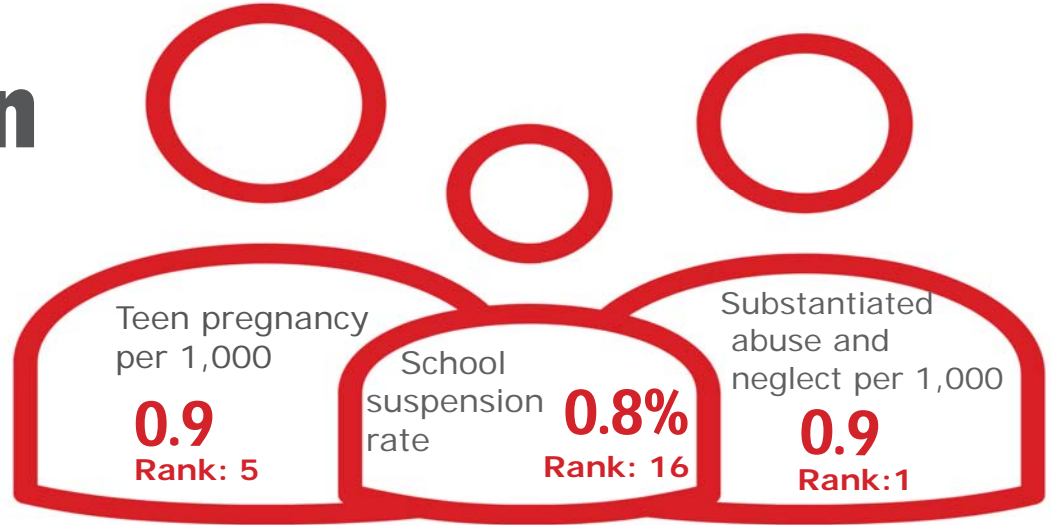


Family & Community

Rank: 1

Williamson Rank: 1

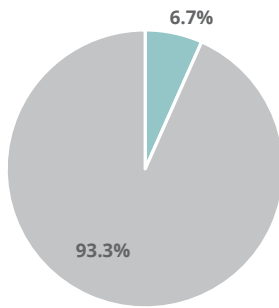


- White, Including Hispanic
- Black, Including Hispanic
- Native American/Alaskan
- Asian/Pacific Islander

Economic Well-Being

Rank: 1

Child Population by Hispanic Ethnicity

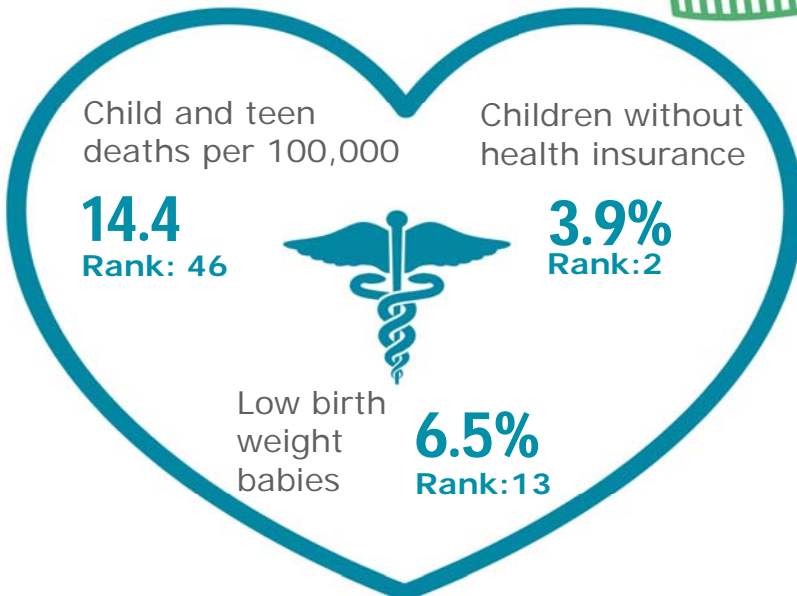


- Hispanic, All Races
- Non-Hispanic



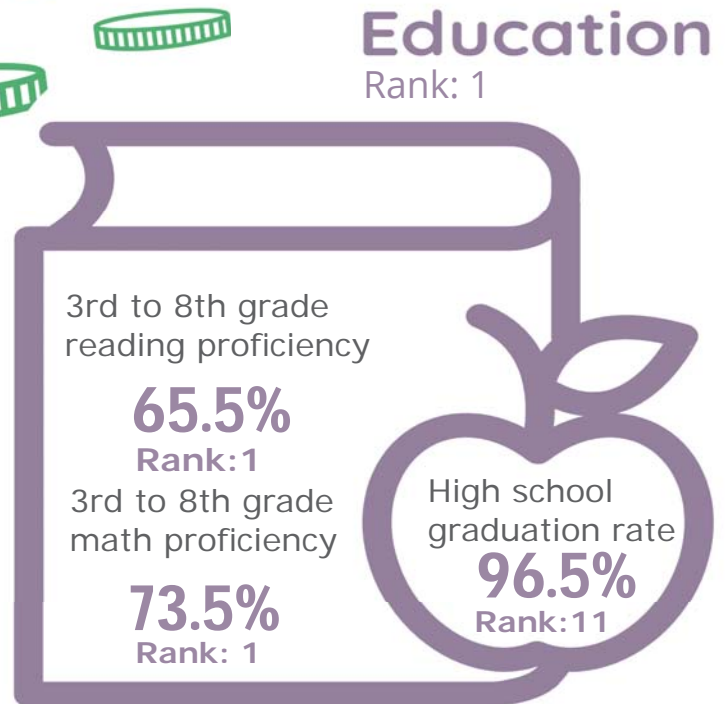
Health

Rank: 3








Education

Rank: 1



Williamson County

Published 1/2021

Demographics 	Williamson County		Tennessee Rate	County Rate as a percentage of State Rate	County Rank
	Number	Rate			
Total population (state comparison is number not rate)	231,737	NA	6,769,975	3.4%	6
Population under 18 years of age	62,337	26.9%	22.2%	121.2%	1
Economic Well-Being 	Williamson County		Tennessee Rate	County Rate as a percentage of State Rate	County Rank
	Number	Rate			
Youth unemployment	348	6.3%	11.2%	56.3%	11
Per capita personal income (state is dollars not rate)	\$94,872	NA	\$46,900	202.3%	1
Median home sales price (state is dollars not rate)	\$477,055	NA	\$146,000	326.8%	1
Children receiving Families First grants (TANF)	118	0.2%	2.7%	7.0%	1
Children receiving SNAP	2,077	3.3%	28.2%	11.8%	1
Children under five receiving WIC	821	5.9%	30.6%	19.4%	1
Education 	Williamson County		Tennessee Rate	County Rate as a percentage of State Rate	County Rank
	Number	Rate			
School age special education services	3,597	8.5%	12.3%	69.3%	1
TEIS participation (per 1,000 in age group)	209	26.46	27.9	94.9%	35
Cohort high school dropouts	65	2.2%	8.3%	26.5%	19
Event high school dropouts	96	0.7%	2.2%	31.8%	29
Economically disadvantaged students	5,351	12.7%	65.1%	19.5%	1
School expulsions (per 1,000 students)	0	0.0	2.0	0.0%	1
Chronic absenteeism	2,135	5.1%	13.3%	38.3%	2
Young adult college enrollment/completion rate	NA	85.0%	62.5%	136.0%	2
Health 	Williamson County		Tennessee Rate	County Rate as a percentage of State Rate	County Rank
	Number	Rate			
Neonatal abstinence syndrome (per 1,000 live births)	6	2.59	11.5	22.5%	20
Births to mothers who smoked during pregnancy	46	2.0%	12.1%	16.5%	1
Children on TennCare (Medicaid)	7,458	10.4%	44.7%	23.2%	1
Total TennCare (Medicaid) enrollees	11,853	5.1%	19.9%	25.7%	1
Births covered by TennCare (Medicaid)	560	24.1%	65.5%	36.9%	1
Children qualified for Medicaid/CHIP but uninsured	1,466	12.3%	6.5%	189.2%	95
Infant mortality (per 1,000 live births)	2	0.90	6.9	13.0%	19
Neonatal death (per 1,000 live births)	2	0.90	4.4	20.5%	32
Child deaths (per 100,000 children age 1 to 14)	7	14.40	20.5	70.2%	46
Teen violent deaths (per 100,000 children age 15 to 19)	7	38.90	55.7	69.8%	50
Adequate prenatal care	1,569	67.6%	58.8%	115.0%	29
Children under age six screened for lead poisoning	922	5.4%	17.1%	31.7%	94
Public school students measured as overweight/obese	NA	24.4%	39.3%	62.1%	1
Teens with STDs (per 1,000 children age 15 to 17)	32	2.8	19.0	14.8%	3
Medical doctors by county (per 100,000 residents)	397	171.3	229.1	74.8%	9
Dentists by county (per 100,000 residents)	160	69.0	50.1	137.9%	1
Family & Community 	Williamson County		Tennessee Rate	County Rate as a percentage of State Rate	County Rank
	Number	Rate			
Reported child abuse cases	872	1.4%	4.7%	30.0%	1
Commitment to state custody (per 1,000 children)	75	1.1	4.1	26.7%	2
Remaining in state custody (per 1,000 children)	97	1.4	5.2	27.1%	2
Juvenile court referrals	1,601	2.6%	3.5%	72.7%	23
Recorded marriages (per 1,000 residents)	1,143	4.9	8.0	61.3%	90
Recorded divorces (per 1,000 residents)	680	2.9	3.5	82.9%	22

Williamson County

Williamson County ranks highest among Tennessee counties in child well-being. Williamson County leads all other counties by large margins in rates of child poverty, median household income, 3rd to 8th grade students demonstrating proficiency on TNReady tests of reading and math and substantiated cases of child abuse and neglect. The county ranks low only for its high housing costs.

Williamson County ranks in the top 10 counties for low rates children without health insurance and pregnancies among girls age 15 to 17. Williamson County ranks just outside the top 10 in high school graduation rate and percentage of babies born at a low birth weight.

Though Williamson County's child and teen death rate is below the state average it is a much lower ranking at 46th compared to Williamson County's other rankings.

Policy/Practice/Program Options to Improve Outcomes. Many of these policies have multiple models for delivery, including public-private partnership and non-profit leadership.

- Pro-active housing policy that helps ensure affordable housing is available for people to live where they work can improve negative outcomes related to high housing costs.
- Child and teen deaths can be reduced with consistent enforcement of safety measures like proper car seat and seat belt use, bicycle helmet use and life preserver use around water. The fastest-growing cause of child and teen deaths in recent years has been homicide and suicide, often involving a firearm. Families who own firearms can reduce the risk to children and teens by following safe storage practices.