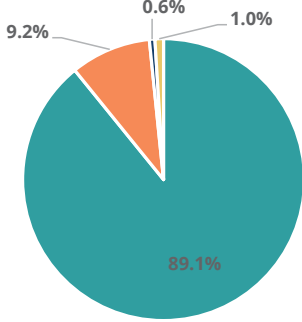


Family & Community

Rank: 43

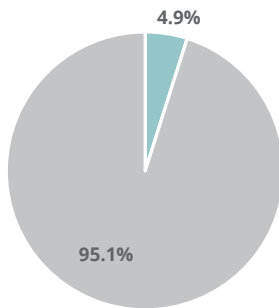
Weakley Rank: 28

Child Population by Race

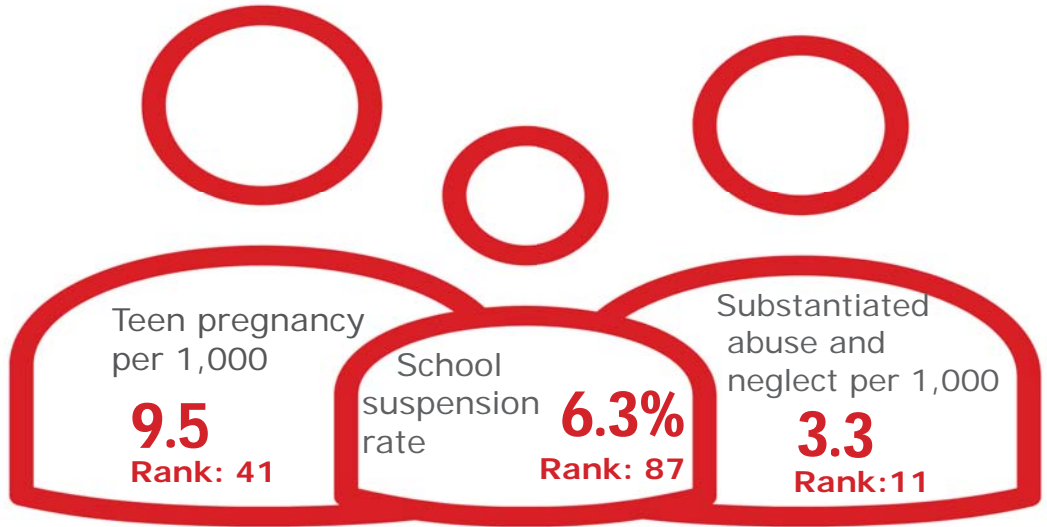


- White, Including Hispanic
- Black, Including Hispanic
- Native American/Alaskan
- Asian/Pacific Islander

Child Population by Hispanic Ethnicity



- Hispanic, All Races
- Non-Hispanic



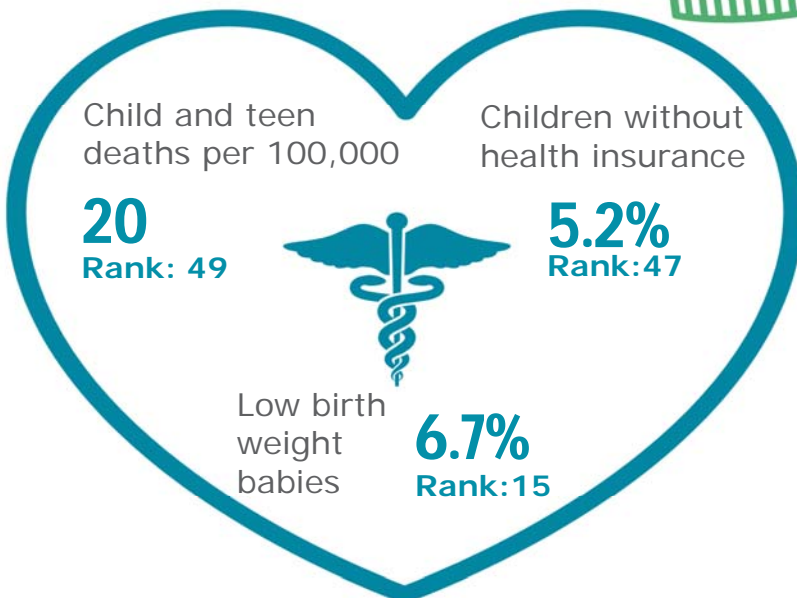
Economic Well-Being

Rank: 27



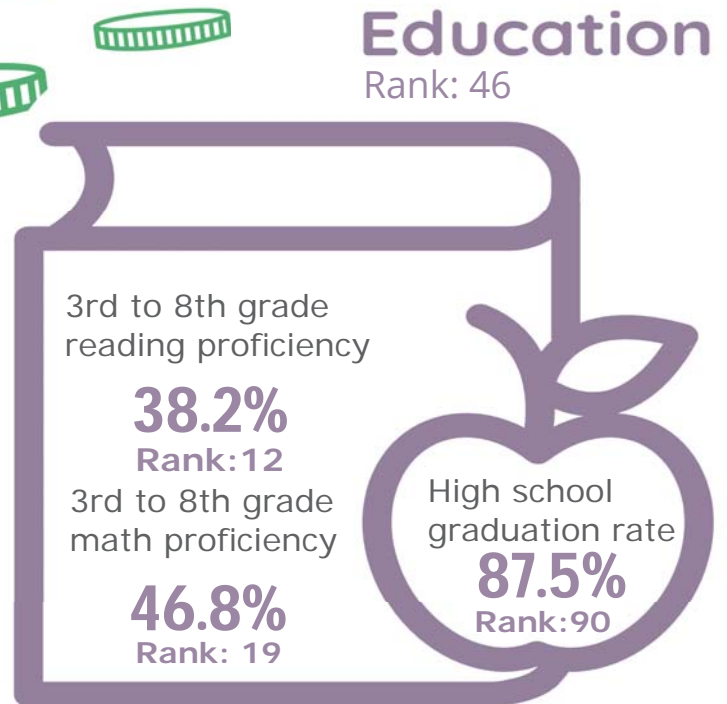
Health

Rank: 26








Education

Rank: 46



Weakley County

Published 1/2021

Demographics 	Weakley County		Tennessee Rate	County Rate as a percentage of State Rate	County Rank
	Number	Rate			
Total population (state comparison is number not rate)	33,413	NA	6,769,975	0.5%	45
Population under 18 years of age	6,718	20.1%	22.2%	90.6%	66
Economic Well-Being 	Weakley County		Tennessee Rate	County Rate as a percentage of State Rate	County Rank
	Number	Rate			
Youth unemployment	110	12.8%	11.2%	114.3%	54
Per capita personal income (state is dollars not rate)	\$37,316	NA	\$46,900	79.6%	47
Median home sales price (state is dollars not rate)	\$89,950	NA	\$146,000	61.6%	85
Children receiving Families First grants (TANF)	233	3.5%	2.7%	128.1%	69
Children receiving SNAP	2,041	30.4%	28.2%	107.9%	49
Children under five receiving WIC	634	37.4%	30.6%	122.0%	44
Education 	Weakley County		Tennessee Rate	County Rate as a percentage of State Rate	County Rank
	Number	Rate			
School age special education services	480	11.8%	12.3%	96.1%	21
TEIS participation (per 1,000 in age group)	24	24.10	27.9	86.4%	27
Cohort high school dropouts	18	5.7%	8.3%	68.7%	66
Event high school dropouts	12	1.0%	2.2%	45.5%	59
Economically disadvantaged students	2,558	63.3%	65.1%	97.2%	34
School expulsions (per 1,000 students)	0	0.0	2.0	0.0%	1
Chronic absenteeism	478	11.9%	13.3%	89.5%	37
Young adult college enrollment/completion rate	NA	67.9%	62.5%	108.6%	14
Health 	Weakley County		Tennessee Rate	County Rate as a percentage of State Rate	County Rank
	Number	Rate			
Neonatal abstinence syndrome (per 1,000 live births)	0	0.00	11.5	0.0%	1
Births to mothers who smoked during pregnancy	68	21.6%	12.1%	178.5%	54
Children on TennCare (Medicaid)	3,478	40.5%	44.7%	90.4%	12
Total TennCare (Medicaid) enrollees	6,492	19.4%	19.9%	97.6%	22
Births covered by TennCare (Medicaid)	219	69.5%	65.5%	106.2%	20
Children qualified for Medicaid/CHIP but uninsured	256	6.2%	6.5%	95.4%	49
Infant mortality (per 1,000 live births)	1	3.20	6.9	46.4%	24
Neonatal death (per 1,000 live births)	1	3.20	4.4	72.7%	52
Child deaths (per 100,000 children age 1 to 14)	1	20.00	20.5	97.6%	49
Teen violent deaths (per 100,000 children age 15 to 19)	1	38.90	55.7	69.8%	50
Adequate prenatal care	230	73.0%	58.8%	124.1%	6
Children under age six screened for lead poisoning	406	19.8%	17.1%	115.5%	31
Public school students measured as overweight/obese	NA	44.5%	39.3%	113.2%	66
Teens with STDs (per 1,000 children age 15 to 17)	11	7.8	19.0	41.0%	11
Medical doctors by county (per 100,000 residents)	20	59.9	229.1	26.1%	33
Dentists by county (per 100,000 residents)	7	20.9	50.1	41.8%	59
Family & Community 	Weakley County		Tennessee Rate	County Rate as a percentage of State Rate	County Rank
	Number	Rate			
Reported child abuse cases	343	5.1%	4.7%	109.4%	39
Commitment to state custody (per 1,000 children)	24	3.0	4.1	75.0%	22
Remaining in state custody (per 1,000 children)	24	3.0	5.2	58.7%	15
Juvenile court referrals	275	4.1%	3.5%	115.8%	52
Recorded marriages (per 1,000 residents)	160	4.8	8.0	60.0%	91
Recorded divorces (per 1,000 residents)	99	3.0	3.5	85.7%	25

Weakley County

At 28th, Weakley County is in the top third of Tennessee counties in child well-being. Some of the county's strongest rankings include low rates substantiated cases of abuse or neglect and a high percentage of students grades 3rd to 8th rated proficient on TNReady math and reading tests. The county's biggest opportunities for improvement are high rates of students suspended from schools and one of the lower high school graduation rates in the state.

Additional strengths are a low cost of housing and a low percentage of babies born at a low birth weight.

Additional challenges include a low median household income and an above-average rate of child and teen deaths.

Policy/Practice/Program Options to Improve Outcomes. Many of these policies have multiple models for delivery, including public-private partnership and non-profit leadership.

- Suspension rates can be reduced through clear definitions of what constitutes suspendable behavior and a focus on restorative discipline practices that aim to improve behavior while keeping children in school.
- Making high school students aware of the community college and technical school benefits available to them through Tennessee Promise can encourage on-time high school graduation.
- With a low median household income, counties can support children who live in poverty by improving outreach to those who may qualify to receive SNAP, WIC and/or TennCare benefits to be sure they are aware of these services. Additionally, nutrition programs that provide food for school-age children to take home can contribute to nutritionally sound diets. Expanding services through Family Resource Centers can also help reach these vulnerable populations.
- Child and teen deaths can be reduced with consistent enforcement of safety measures like proper car seat and seat belt use, bicycle helmet use and life preserver use around water. The fastest-growing cause of child and teen deaths in recent years has been homicide and suicide, often involving a firearm. Families who own firearms can reduce the risk to children and teens by following safe storage practices.