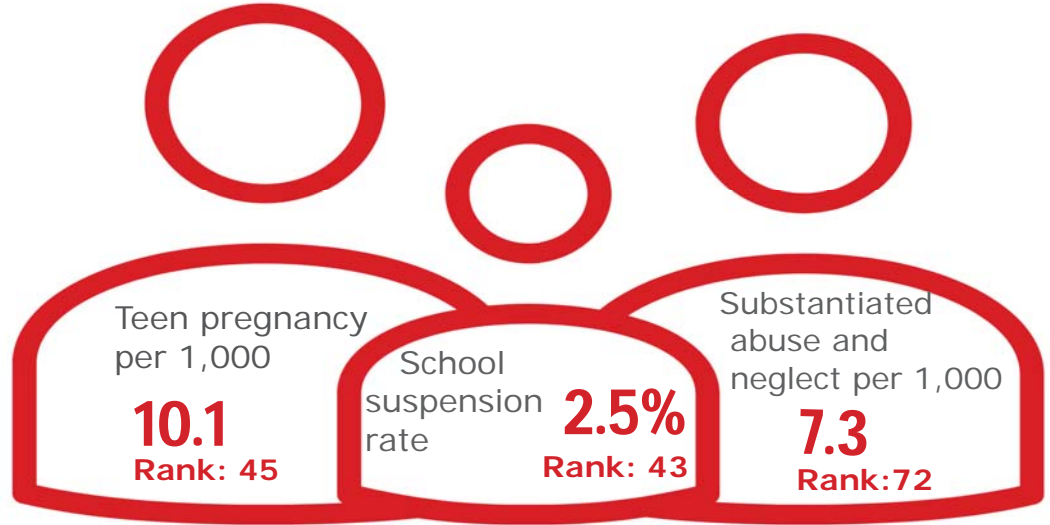


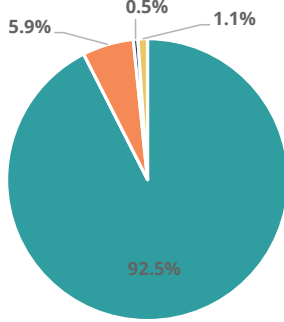
Family & Community

Rank: 54

Warren Rank: 87



Child Population by Race

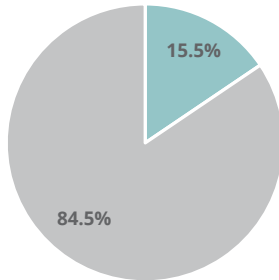


- White, Including Hispanic
- Black, Including Hispanic
- Native American/Alaskan
- Asian/Pacific Islander

Economic Well-Being

Rank: 84

Child Population by Hispanic Ethnicity

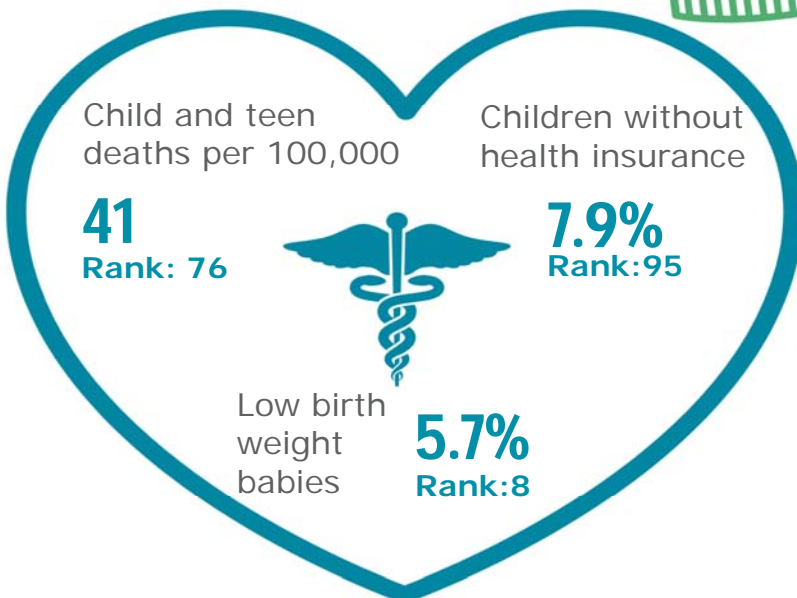


- Hispanic, All Races
- Non-Hispanic



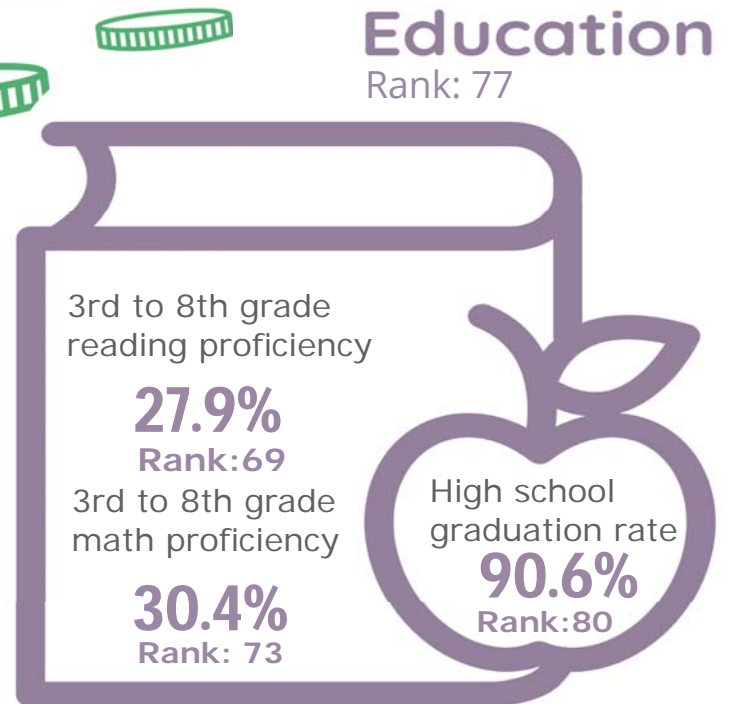
Health

Rank: 92








Education

Rank: 77



Warren County

Published 1/2021

Demographics 	Warren County		Tennessee Rate	County Rate as a percentage of State Rate	County Rank
	Number	Rate			
Total population (state comparison is number not rate)	40,871	NA	6,769,975	0.6%	37
Population under 18 years of age	9,466	23.2%	22.2%	104.3%	18
Economic Well-Being 	Warren County		Tennessee Rate	County Rate as a percentage of State Rate	County Rank
	Number	Rate			
Youth unemployment	117	16.1%	11.2%	143.8%	68
Per capita personal income (state is dollars not rate)	\$33,970	NA	\$46,900	72.4%	64
Median home sales price (state is dollars not rate)	\$117,700	NA	\$146,000	80.6%	67
Children receiving Families First grants (TANF)	251	2.7%	2.7%	97.9%	45
Children receiving SNAP	3,225	34.1%	28.2%	121.0%	68
Children under five receiving WIC	1,019	41.7%	30.6%	136.2%	55
Education 	Warren County		Tennessee Rate	County Rate as a percentage of State Rate	County Rank
	Number	Rate			
School age special education services	773	12.2%	12.3%	99.6%	27
TEIS participation (per 1,000 in age group)	38	26.19	27.9	93.9%	33
Cohort high school dropouts	11	2.3%	8.3%	27.7%	20
Event high school dropouts	9	0.5%	2.2%	22.7%	15
Economically disadvantaged students	5,267	83.9%	65.1%	128.9%	74
School expulsions (per 1,000 students)	0	0.0	2.0	0.0%	1
Chronic absenteeism	899	14.3%	13.3%	107.5%	63
Young adult college enrollment/completion rate	NA	54.8%	62.5%	87.7%	77
Health 	Warren County		Tennessee Rate	County Rate as a percentage of State Rate	County Rank
	Number	Rate			
Neonatal abstinence syndrome (per 1,000 live births)	19	41.30	11.5	359.7%	52
Births to mothers who smoked during pregnancy	96	20.9%	12.1%	172.7%	50
Children on TennCare (Medicaid)	5,997	54.6%	44.7%	122.2%	68
Total TennCare (Medicaid) enrollees	10,624	26.0%	19.9%	130.6%	82
Births covered by TennCare (Medicaid)	367	79.8%	65.5%	121.9%	52
Children qualified for Medicaid/CHIP but uninsured	610	9.1%	6.5%	140.0%	94
Infant mortality (per 1,000 live births)	3	6.50	6.9	94.2%	53
Neonatal death (per 1,000 live births)	1	2.20	4.4	50.0%	42
Child deaths (per 100,000 children age 1 to 14)	3	41.00	20.5	200.0%	76
Teen violent deaths (per 100,000 children age 15 to 19)	4	148.00	55.7	265.7%	89
Adequate prenatal care	247	53.7%	58.8%	91.3%	77
Children under age six screened for lead poisoning	515	17.5%	17.1%	102.0%	50
Public school students measured as overweight/obese	NA	46.2%	39.3%	117.6%	77
Teens with STDs (per 1,000 children age 15 to 17)	15	9.0	19.0	47.5%	17
Medical doctors by county (per 100,000 residents)	21	51.4	229.1	22.4%	41
Dentists by county (per 100,000 residents)	13	31.8	50.1	63.5%	36
Family & Community 	Warren County		Tennessee Rate	County Rate as a percentage of State Rate	County Rank
	Number	Rate			
Reported child abuse cases	487	5.1%	4.7%	110.3%	41
Commitment to state custody (per 1,000 children)	110	10.5	4.1	257.5%	87
Remaining in state custody (per 1,000 children)	124	11.8	5.2	227.2%	85
Juvenile court referrals	347	3.7%	3.5%	103.7%	42
Recorded marriages (per 1,000 residents)	248	6.1	8.0	76.3%	54
Recorded divorces (per 1,000 residents)	175	4.3	3.5	122.9%	71

Warren County

At 87th, Warren County ranks near the bottom of Tennessee counties in child well-being. The county's best rankings include a below-average rate of babies born at a low birth weight and a low housing cost. The county's biggest opportunities for improvement including having the highest rate of children without health insurance and one of the highest child poverty rates with 35.3 percent of children living in poverty.

Additional strengths include a below-average rate of pregnancy among girls age 15-17 and of a low rate of school suspensions.

Additional challenges occur in the education domain with a low percentage of students graduating high school and a low percentage of students grades 3rd – 8th rated proficient on TNReady reading and math tests. Warren county also had an above-average rate of substantiated cases of abuse or neglect.

Policy/Practice/Program Options to Improve Outcomes. Many of these policies have multiple models for delivery, including public-private partnership and non-profit leadership.

- Most uninsured children in Tennessee qualify for either TennCare or CoverKids, so high rates of uninsured children can be improved with outreach to make sure that families are aware of these insurance opportunities. According to Census Bureau estimates, Warren County has over 600 children who qualify for these health insurance programs but who nonetheless lack insurance.
- With a high rate of child poverty, improving outreach to those who may qualify to receive SNAP and WIC benefits to be sure they are aware of these services can help ensure basic needs are met. Additionally, nutrition programs that provide food for school-age children to take home can contribute to food security. Expanding services through Family Resource Centers can also help reach these vulnerable populations.
- Making high school students aware of the community college and technical school benefits available to them through Tennessee Promise can encourage on-time high school graduation.
- Increased access to pre-K can help reading and math proficiency in later grades. Early assessment of reading skills coupled with appropriate interventions where needed can improve reading proficiency in 3rd to 8th grade. Increasing STEM opportunities in elementary and middle schools can help improve 3rd to 8th grade math proficiency.
- Two-generation programs such as evidence-based home visiting have been shown to reduce instances of child abuse and neglect.