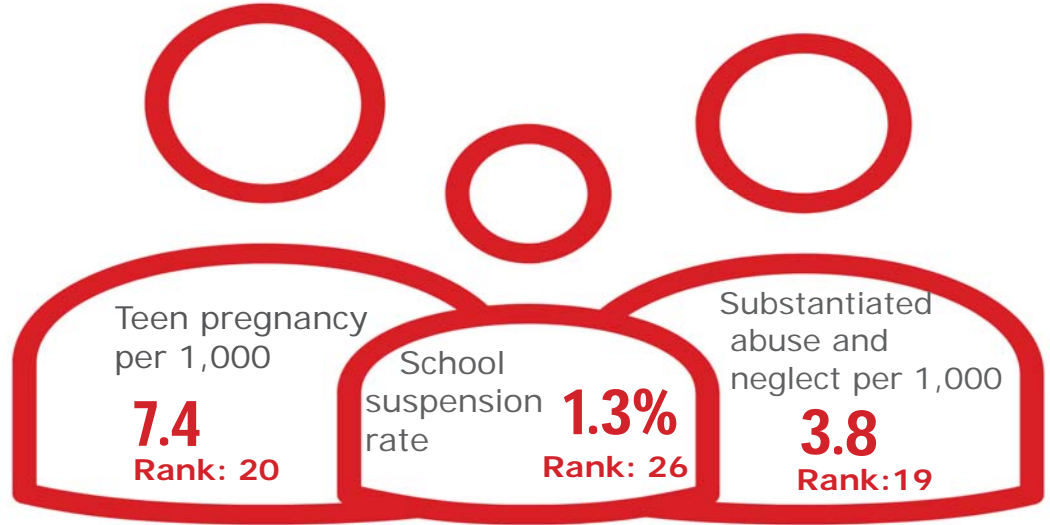


Family & Community

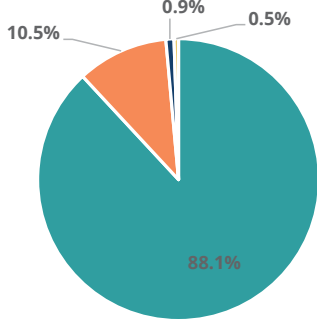
Rank: 6

Trousdale

Rank: 3



Child Population by Race

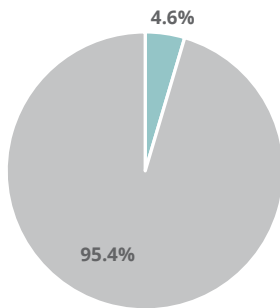


- White, Including Hispanic
- Black, Including Hispanic
- Native American/Alaskan
- Asian/Pacific Islander

Economic Well-Being

Rank: 85

Child Population by Hispanic Ethnicity

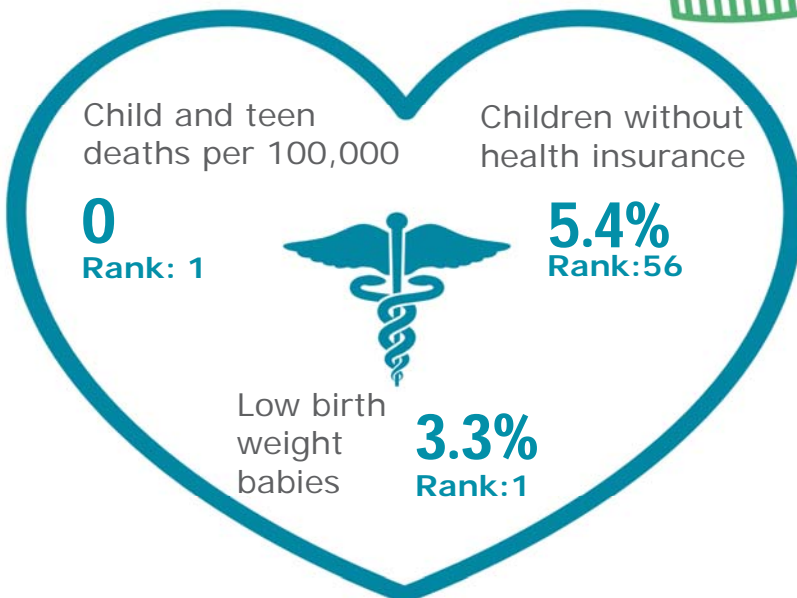


- Hispanic, All Races
- Non-Hispanic



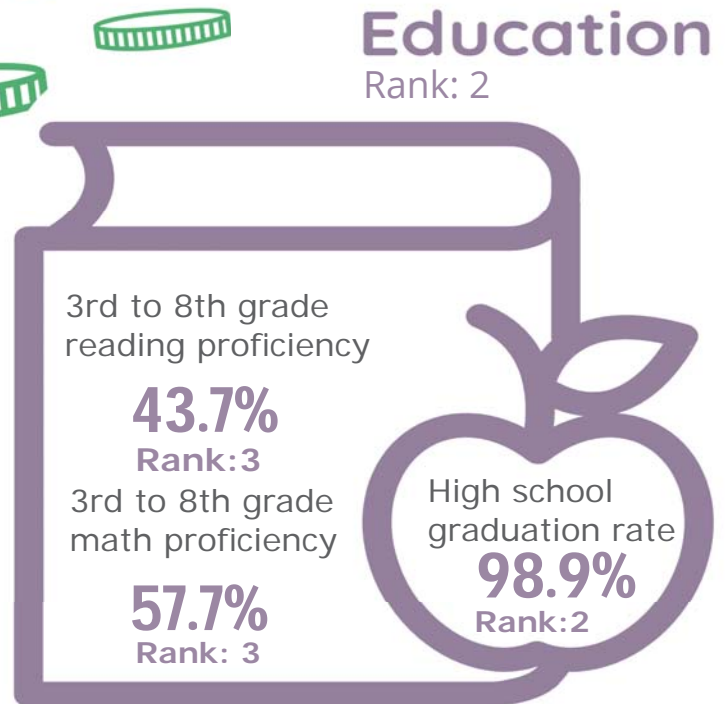
Health

Rank: 4








Education

Rank: 2



Trousdale County

Published 1/2021

Demographics 	Trousdale County		Tennessee Rate	County Rate as a percentage of State Rate	County Rank
	Number	Rate			
Total population (state comparison is number not rate)	11,009	NA	6,769,975	0.2%	87
Population under 18 years of age	2,080	18.9%	22.2%	85.1%	81
Economic Well-Being 	Trousdale County		Tennessee Rate	County Rate as a percentage of State Rate	County Rank
	Number	Rate			
Youth unemployment	23	18.0%	11.2%	160.7%	74
Per capita personal income (state is dollars not rate)	\$30,090	NA	\$46,900	64.2%	87
Median home sales price (state is dollars not rate)	\$180,450	NA	\$146,000	123.6%	18
Children receiving Families First grants (TANF)	46	2.2%	2.7%	81.0%	27
Children receiving SNAP	529	25.4%	28.2%	90.4%	20
Children under five receiving WIC	173	31.7%	30.6%	103.5%	20
Education 	Trousdale County		Tennessee Rate	County Rate as a percentage of State Rate	County Rank
	Number	Rate			
School age special education services	161	13.1%	12.3%	106.2%	49
TEIS participation (per 1,000 in age group)	13	39.27	27.9	140.8%	73
Cohort high school dropouts	5	6.0%	8.3%	72.3%	69
Event high school dropouts	2	0.6%	2.2%	27.3%	21
Economically disadvantaged students	959	77.3%	65.1%	118.7%	64
School expulsions (per 1,000 students)	1	1.0	2.0	50.0%	67
Chronic absenteeism	119	9.6%	13.3%	72.2%	23
Young adult college enrollment/completion rate	NA	76.9%	62.5%	123.0%	3
Health 	Trousdale County		Tennessee Rate	County Rate as a percentage of State Rate	County Rank
	Number	Rate			
Neonatal abstinence syndrome (per 1,000 live births)	0	0.00	11.5	0.0%	1
Births to mothers who smoked during pregnancy	29	23.8%	12.1%	196.7%	72
Children on TennCare (Medicaid)	1,100	43.3%	44.7%	96.9%	20
Total TennCare (Medicaid) enrollees	1,919	17.4%	19.9%	87.6%	14
Births covered by TennCare (Medicaid)	101	82.8%	65.5%	126.5%	64
Children qualified for Medicaid/CHIP but uninsured	75	6.4%	6.5%	98.5%	61
Infant mortality (per 1,000 live births)	0	0.00	6.9	0.0%	1
Neonatal death (per 1,000 live births)	0	0.00	4.4	0.0%	1
Child deaths (per 100,000 children age 1 to 14)	0	0.00	20.5	0.0%	1
Teen violent deaths (per 100,000 children age 15 to 19)	0	0.00	55.7	0.0%	1
Adequate prenatal care	87	71.3%	58.8%	121.3%	11
Children under age six screened for lead poisoning	97	14.9%	17.1%	86.9%	65
Public school students measured as overweight/obese	NA	45.0%	39.3%	114.5%	70
Teens with STDs (per 1,000 children age 15 to 17)	9	20.3	19.0	106.8%	55
Medical doctors by county (per 100,000 residents)	4	36.3	229.1	15.9%	65
Dentists by county (per 100,000 residents)	2	18.2	50.1	36.3%	66
Family & Community 	Trousdale County		Tennessee Rate	County Rate as a percentage of State Rate	County Rank
	Number	Rate			
Reported child abuse cases	89	4.3%	4.7%	91.7%	18
Commitment to state custody (per 1,000 children)	7	2.9	4.1	72.0%	16
Remaining in state custody (per 1,000 children)	9	3.8	5.2	72.4%	23
Juvenile court referrals	157	7.5%	3.5%	213.6%	78
Recorded marriages (per 1,000 residents)	59	5.4	8.0	67.5%	78
Recorded divorces (per 1,000 residents)	43	3.9	3.5	111.4%	59

Trousdale County

At 3rd, Trousdale County is one of the top Tennessee counties in child well-being. The county's best rankings include no child or teen deaths in 2018 and the lowest percentage in the state of babies born at a low birth weight. The county's biggest opportunities for improvement high housing costs and a comparatively high rate of children who lack health insurance.

Additional strengths include the second highest graduation rate in the state and third highest percentage of students grades 3rd to 8th rated proficient in TNReady reading and math.

Additional challenges include a below-average median household income and although the poverty rate is lower than many counties in the state, one in five children in Trousdale county are living in poverty.

Policy/Practice/Program Options to Improve Outcomes. Many of these policies have multiple models for delivery, including public-private partnership and non-profit leadership.

- Pro-active housing policy that helps ensure affordable housing is available for people to live where they work can improve negative outcomes related to high housing costs.
- Most uninsured children in Tennessee qualify for either TennCare or CoverKids, so high rates of uninsured children can be improved with outreach to make sure that families are aware of these insurance opportunities. According to Census Bureau estimates, Trousdale County has about 75 children who qualify for these health insurance programs but who nonetheless lack insurance.
- With a low median household income and children living in poverty, improving outreach to those who may qualify to receive SNAP, WIC and TennCare benefits to be sure they are aware of these services can help ensure basic needs are met. Additionally, nutrition programs that provide food for school-age children to take home can contribute to food security. Expanding services through Family Resource Centers can also help reach these vulnerable populations.