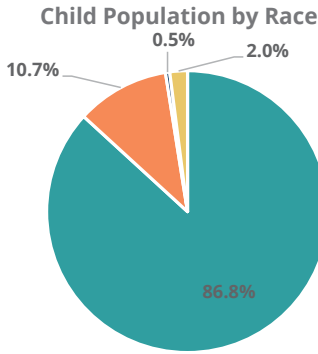


Family & Community

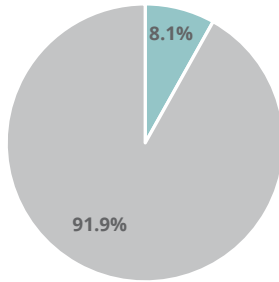
Rank: 19

Sumner Rank: 5

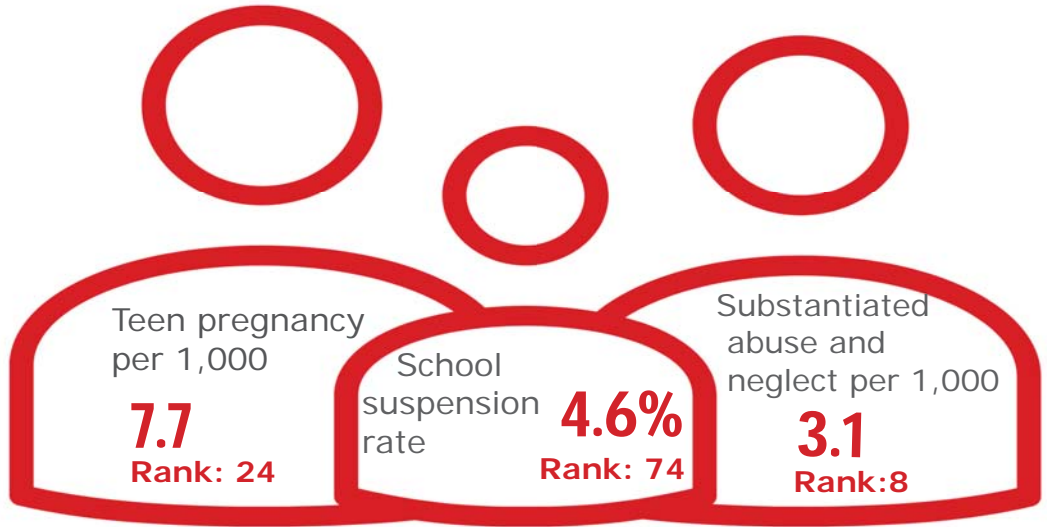


- White, Including Hispanic
- Black, Including Hispanic
- Native American/Alaskan
- Asian/Pacific Islander

Child Population by Hispanic Ethnicity



- Hispanic, All Races
- Non-Hispanic



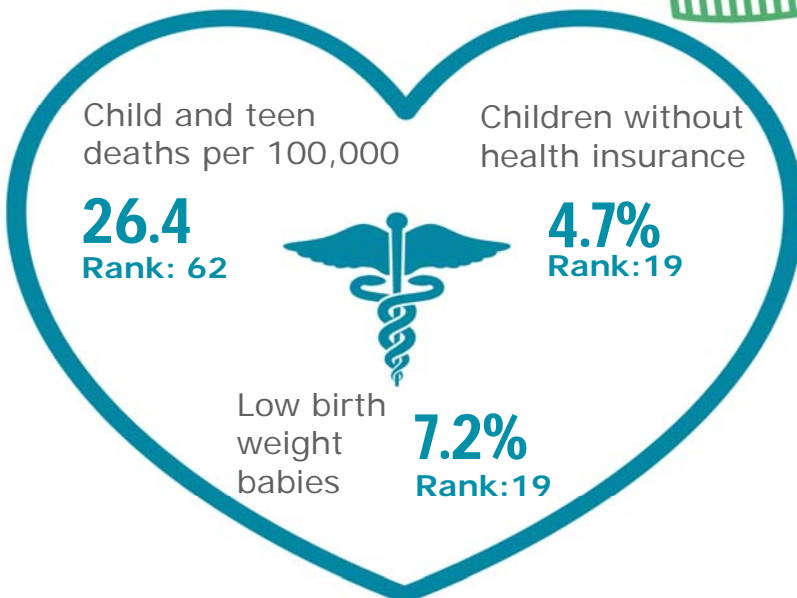
Economic Well-Being

Rank: 8



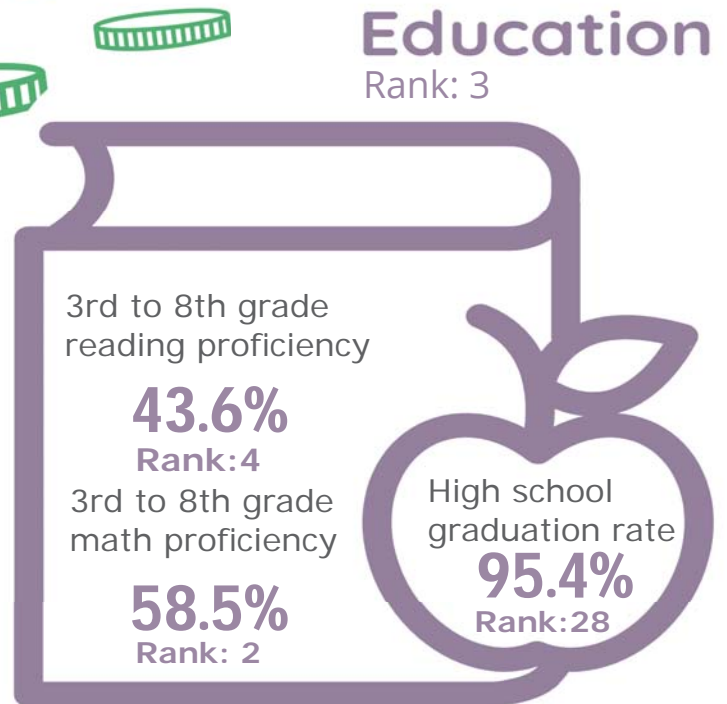
Health

Rank: 23








Education

Rank: 3



Sumner County

Published 1/2021

Demographics 	Sumner County		Tennessee Rate	County Rate as a percentage of State Rate	County Rank
	Number	Rate			
Total population (state comparison is number not rate)	187,147	NA	6,769,975	2.8%	8
Population under 18 years of age	43,482	23.2%	22.2%	104.7%	16
Economic Well-Being 	Sumner County		Tennessee Rate	County Rate as a percentage of State Rate	County Rank
	Number	Rate			
Youth unemployment	362	8.1%	11.2%	72.3%	21
Per capita personal income (state is dollars not rate)	\$48,656	NA	\$46,900	103.7%	8
Median home sales price (state is dollars not rate)	\$272,000	NA	\$146,000	186.3%	4
Children receiving Families First grants (TANF)	658	1.5%	2.7%	55.9%	9
Children receiving SNAP	7,479	17.2%	28.2%	61.1%	3
Children under five receiving WIC	2,048	18.1%	30.6%	59.0%	3
Education 	Sumner County		Tennessee Rate	County Rate as a percentage of State Rate	County Rank
	Number	Rate			
School age special education services	3,698	12.7%	12.3%	103.0%	40
TEIS participation (per 1,000 in age group)	289	42.96	27.9	154.1%	80
Cohort high school dropouts	87	3.9%	8.3%	47.0%	39
Event high school dropouts	65	0.7%	2.2%	31.8%	29
Economically disadvantaged students	11,148	38.3%	65.1%	58.8%	3
School expulsions (per 1,000 students)	0	0.0	2.0	0.0%	1
Chronic absenteeism	2,638	9.0%	13.3%	67.7%	14
Young adult college enrollment/completion rate	NA	68.2%	62.5%	109.1%	10
Health 	Sumner County		Tennessee Rate	County Rate as a percentage of State Rate	County Rank
	Number	Rate			
Neonatal abstinence syndrome (per 1,000 live births)	17	7.91	11.5	68.9%	26
Births to mothers who smoked during pregnancy	226	10.5%	12.1%	86.8%	11
Children on TennCare (Medicaid)	16,249	32.4%	44.7%	72.4%	3
Total TennCare (Medicaid) enrollees	26,567	14.2%	19.9%	71.3%	4
Births covered by TennCare (Medicaid)	1,219	56.7%	65.5%	86.7%	5
Children qualified for Medicaid/CHIP but uninsured	1,357	7.0%	6.5%	107.7%	77
Infant mortality (per 1,000 live births)	11	5.10	6.9	73.9%	39
Neonatal death (per 1,000 live births)	4	1.90	4.4	43.2%	37
Child deaths (per 100,000 children age 1 to 14)	9	26.40	20.5	128.8%	62
Teen violent deaths (per 100,000 children age 15 to 19)	6	51.10	55.7	91.7%	57
Adequate prenatal care	1,150	53.5%	58.8%	91.0%	78
Children under age six screened for lead poisoning	1,836	13.4%	17.1%	78.4%	70
Public school students measured as overweight/obese	NA	35.8%	39.3%	91.1%	8
Teens with STDs (per 1,000 children age 15 to 17)	84	11.7	19.0	61.3%	38
Medical doctors by county (per 100,000 residents)	177	94.6	229.1	41.3%	20
Dentists by county (per 100,000 residents)	80	42.7	50.1	85.4%	15
Family & Community 	Sumner County		Tennessee Rate	County Rate as a percentage of State Rate	County Rank
	Number	Rate			
Reported child abuse cases	1,582	3.6%	4.7%	78.0%	8
Commitment to state custody (per 1,000 children)	98	2.0	4.1	50.2%	6
Remaining in state custody (per 1,000 children)	113	2.4	5.2	45.3%	10
Juvenile court referrals	1,461	3.4%	3.5%	95.1%	35
Recorded marriages (per 1,000 residents)	1,165	6.2	8.0	77.5%	48
Recorded divorces (per 1,000 residents)	699	3.7	3.5	105.7%	52

Sumner County

At 5th, Sumner County ranks among the top Tennessee counties in child well-being. The county's best rankings include a one of the highest rates of 3rd to 8th grade students demonstrating proficiency on TNReady math and reading tests in the state. Sumner County also has a relatively low rate of child poverty (at 11.7 percent, Sumner County's child poverty rate is still too high, but it is one of the lowest in the state). The county's biggest opportunities for improvement include high housing costs and an above-average rate of school suspensions.

Additional strengths include a high median household income and a low rate of substantiated cases of abuse or neglect.

An additional challenge is an above-average rate of child and teen deaths in 2018.

Policy/Practice/Program Options to Improve Outcomes. Many of these policies have multiple models for delivery, including public-private partnership and non-profit leadership.

- Pro-active housing policy that helps ensure affordable housing is available for people to live where they work can improve negative outcomes related to high housing costs.
- Suspension rates can be reduced through clear definitions of what constitutes suspendable behavior and a focus on restorative discipline practices that aim to improve behavior while keeping children in school.
- Child and teen deaths can be reduced with consistent enforcement of safety measures like proper car seat and seat belt use, bicycle helmet use and life preserver use around water. The fastest-growing cause of child and teen deaths in recent years has been homicide and suicide, often involving a firearm. Families who own firearms can reduce the risk to children and teens by following safe storage practices.