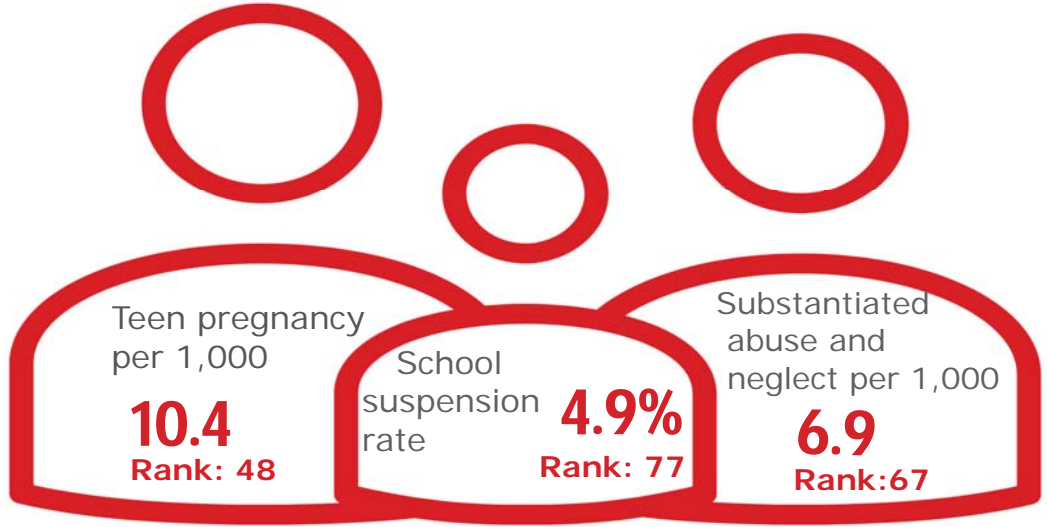




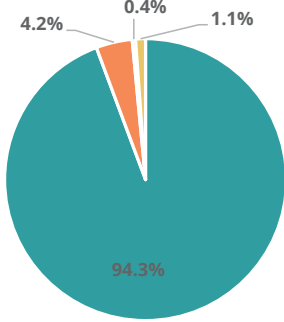
Family & Community

Rank: 74

Sullivan Rank: 26



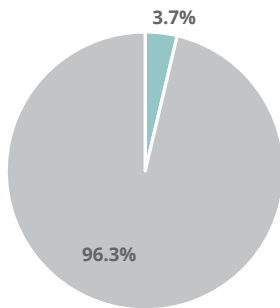
Child Population by Race



- White, Including Hispanic
- Black, Including Hispanic
- Native American/Alaskan
- Asian/Pacific Islander

Economic Well-Being Rank: 49

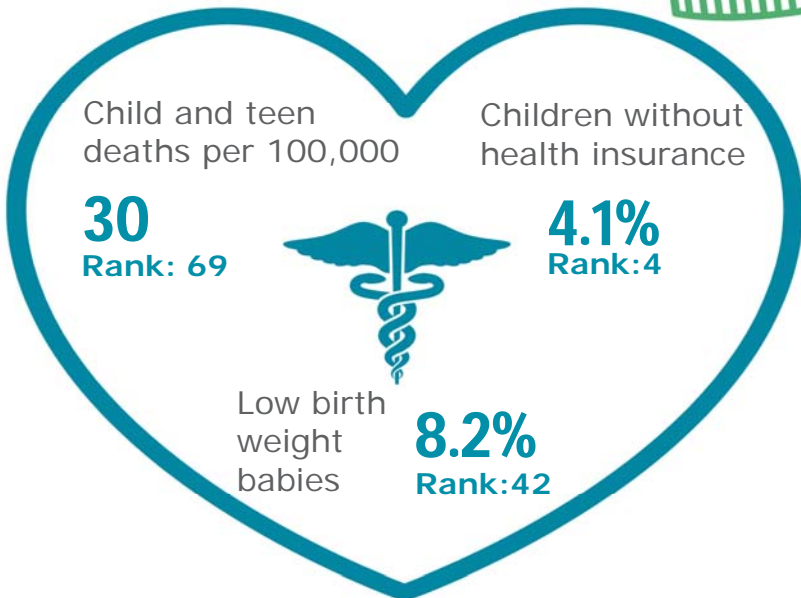
Child Population by Hispanic Ethnicity



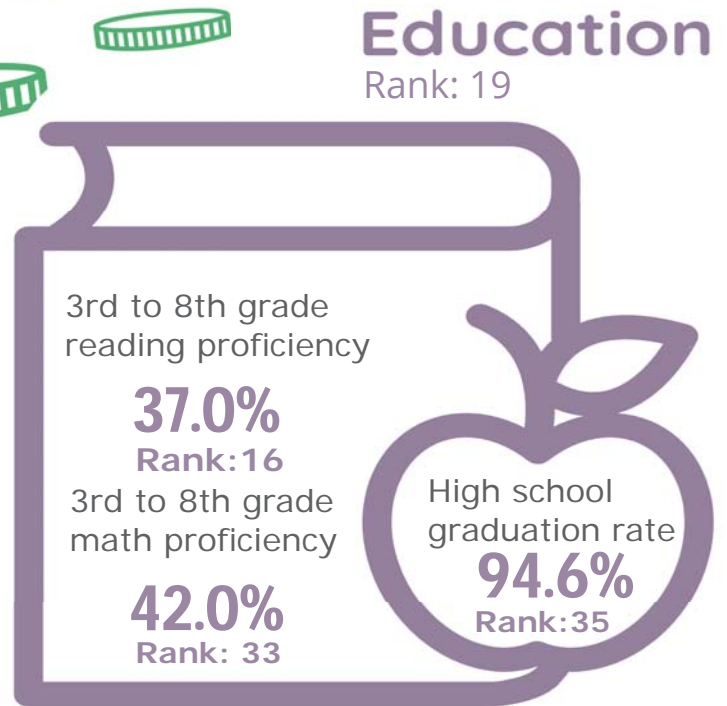
- Hispanic, All Races
- Non-Hispanic



Health Rank: 16








Education Rank: 19



Sullivan County

Published 1/2021

Demographics 	Sullivan County		Tennessee Rate	County Rate as a percentage of State Rate	County Rank
	Number	Rate			
Total population (state comparison is number not rate)	157,671	NA	6,769,975	2.3%	9
Population under 18 years of age	30,139	19.1%	22.2%	86.1%	80
Economic Well-Being 	Sullivan County		Tennessee Rate	County Rate as a percentage of State Rate	County Rank
	Number	Rate			
Youth unemployment	396	13.9%	11.2%	124.1%	60
Per capita personal income (state is dollars not rate)	\$42,606	NA	\$46,900	90.8%	16
Median home sales price (state is dollars not rate)	\$144,250	NA	\$146,000	98.8%	40
Children receiving Families First grants (TANF)	1,184	3.9%	2.7%	145.0%	77
Children receiving SNAP	9,014	29.9%	28.2%	106.2%	44
Children under five receiving WIC	2,653	34.8%	30.6%	113.7%	36
Education 	Sullivan County		Tennessee Rate	County Rate as a percentage of State Rate	County Rank
	Number	Rate			
School age special education services	3,175	15.2%	12.3%	123.4%	79
TEIS participation (per 1,000 in age group)	166	36.78	27.9	131.9%	66
Cohort high school dropouts	59	3.4%	8.3%	40.9%	31
Event high school dropouts	56	0.8%	2.2%	36.5%	43
Economically disadvantaged students	11,937	57.8%	65.1%	88.7%	18
School expulsions (per 1,000 students)	30	1.3	2.0	65.0%	83
Chronic absenteeism	3,153	15.1%	13.3%	113.5%	69
Young adult college enrollment/completion rate	NA	68.1%	62.5%	109.0%	11
Health 	Sullivan County		Tennessee Rate	County Rate as a percentage of State Rate	County Rank
	Number	Rate			
Neonatal abstinence syndrome (per 1,000 live births)	71	47.14	11.5	410.6%	58
Births to mothers who smoked during pregnancy	306	20.3%	12.1%	167.8%	47
Children on TennCare (Medicaid)	17,046	48.3%	44.7%	107.9%	34
Total TennCare (Medicaid) enrollees	31,723	20.1%	19.9%	101.1%	29
Births covered by TennCare (Medicaid)	1,072	71.2%	65.5%	108.7%	24
Children qualified for Medicaid/CHIP but uninsured	820	4.5%	6.5%	69.2%	4
Infant mortality (per 1,000 live births)	7	4.60	6.9	66.7%	33
Neonatal death (per 1,000 live births)	3	2.00	4.4	45.5%	38
Child deaths (per 100,000 children age 1 to 14)	7	30.00	20.5	146.3%	69
Teen violent deaths (per 100,000 children age 15 to 19)	3	34.00	55.7	61.0%	46
Adequate prenatal care	841	55.8%	58.8%	94.9%	70
Children under age six screened for lead poisoning	2,266	24.6%	17.1%	143.6%	11
Public school students measured as overweight/obese	NA	36.6%	39.3%	93.1%	9
Teens with STDs (per 1,000 children age 15 to 17)	57	10.7	19.0	56.3%	34
Medical doctors by county (per 100,000 residents)	374	237.2	229.1	103.5%	6
Dentists by county (per 100,000 residents)	95	60.3	50.1	120.3%	3
Family & Community 	Sullivan County		Tennessee Rate	County Rate as a percentage of State Rate	County Rank
	Number	Rate			
Reported child abuse cases	2,415	8.0%	4.7%	171.7%	92
Commitment to state custody (per 1,000 children)	162	4.8	4.1	118.5%	44
Remaining in state custody (per 1,000 children)	242	7.2	5.2	138.5%	58
Juvenile court referrals	2,033	6.7%	3.5%	190.9%	76
Recorded marriages (per 1,000 residents)	815	5.2	8.0	65.0%	83
Recorded divorces (per 1,000 residents)	578	3.7	3.5	105.7%	52

Sullivan County

At 26th, Sullivan County ranks in the top third of Tennessee counties in child well-being. The county's best rankings include a low rate of children without health insurance and high percentages of 3rd to 8th grade students demonstrating proficiency on TNReady reading and math tests. The county's biggest opportunities for improvement include a high rate of substantiated cases of child abuse and neglect and an above-average rate of students suspended from school.

Additional strengths include an above-average graduation rate and below-average housing costs.

An additional challenge is that almost one in four of the county's children live in poverty.

Policy/Practice/Program Options to Improve Outcomes. Many of these policies have multiple models for delivery, including public-private partnership and non-profit leadership.

- Two-generation programs such as evidence-based home visiting have been shown to reduce instances of child abuse and neglect.
- Suspension rates can be reduced through clear definitions of what constitutes suspendable behavior and a focus on restorative discipline practices that aim to improve behavior while keeping children in school.
- Counties can support children who live in poverty by improving outreach to those who may qualify to receive SNAP, WIC and/or TennCare benefits to be sure they are aware of these services. Additionally, nutrition programs that provide food for school-age children to take home can contribute to nutritionally sound diets. Expanding services through Family Resource Centers can also help reach these vulnerable populations.