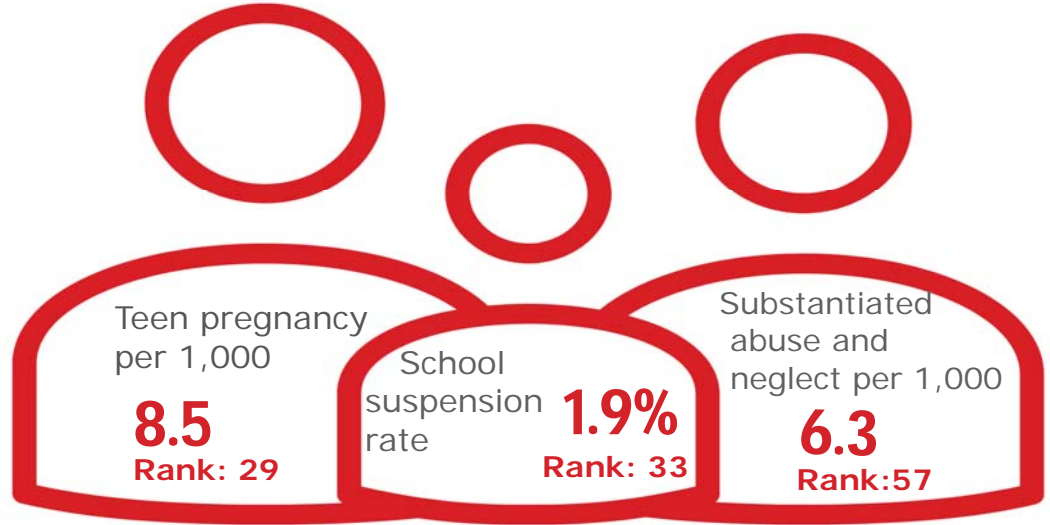


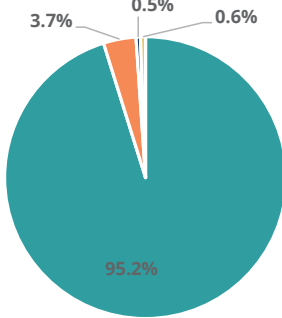
Family & Community

Rank: 34

Smith Rank: 11



Child Population by Race

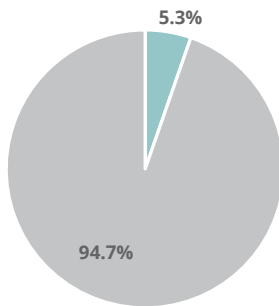


- White, Including Hispanic
- Black, Including Hispanic
- Native American/Alaskan
- Asian/Pacific Islander

Economic Well-Being

Rank: 4

Child Population by Hispanic Ethnicity

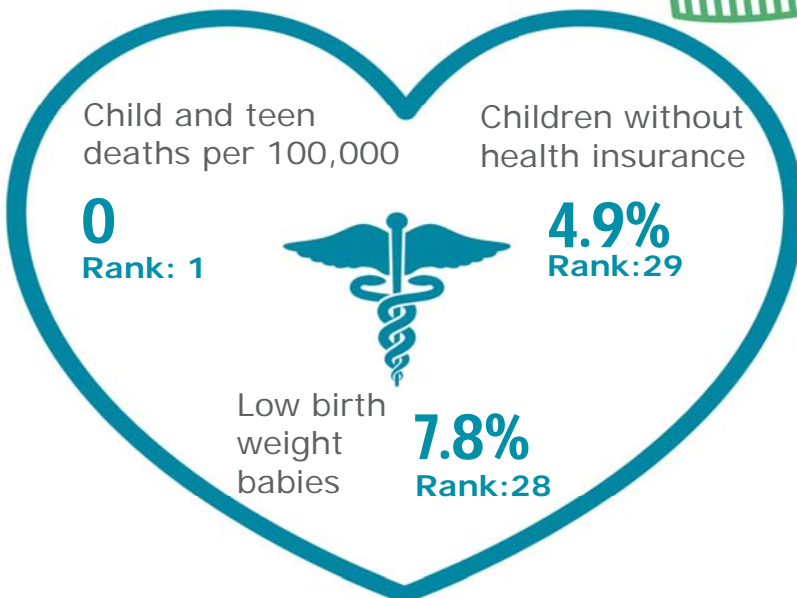


- Hispanic, All Races
- Non-Hispanic



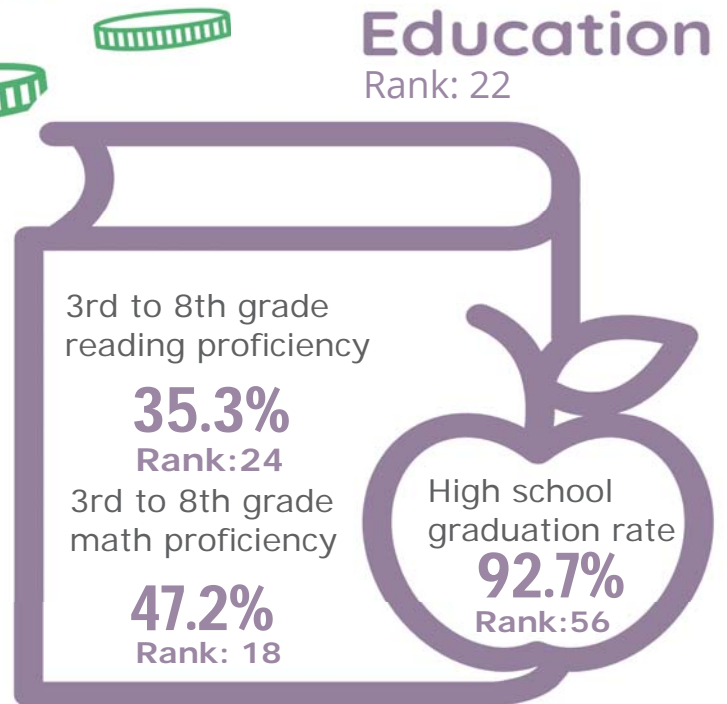
Health

Rank: 13








Education

Rank: 22



Smith County

Published 1/2021

Demographics 	Smith County		Tennessee Rate	County Rate as a percentage of State Rate	County Rank
	Number	Rate			
Total population (state comparison is number not rate)	19,937	NA	6,769,975	0.3%	66
Population under 18 years of age	4,456	22.4%	22.2%	100.7%	26
Economic Well-Being 	Smith County		Tennessee Rate	County Rate as a percentage of State Rate	County Rank
	Number	Rate			
Youth unemployment	79	24.0%	11.2%	214.3%	87
Per capita personal income (state is dollars not rate)	\$37,742	NA	\$46,900	80.5%	44
Median home sales price (state is dollars not rate)	\$150,000	NA	\$146,000	102.7%	33
Children receiving Families First grants (TANF)	96	2.2%	2.7%	79.7%	24
Children receiving SNAP	1,122	25.2%	28.2%	89.4%	19
Children under five receiving WIC	401	32.7%	30.6%	106.7%	23
Education 	Smith County		Tennessee Rate	County Rate as a percentage of State Rate	County Rank
	Number	Rate			
School age special education services	370	12.2%	12.3%	99.6%	28
TEIS participation (per 1,000 in age group)	23	30.50	27.9	109.4%	45
Cohort high school dropouts	10	4.3%	8.3%	51.8%	43
Event high school dropouts	9	0.9%	2.2%	40.9%	46
Economically disadvantaged students	1,663	55.8%	65.1%	85.7%	14
School expulsions (per 1,000 students)	3	1.0	2.0	50.0%	67
Chronic absenteeism	241	8.0%	13.3%	60.2%	11
Young adult college enrollment/completion rate	NA	60.4%	62.5%	96.6%	46
Health 	Smith County		Tennessee Rate	County Rate as a percentage of State Rate	County Rank
	Number	Rate			
Neonatal abstinence syndrome (per 1,000 live births)	0	0.00	11.5	0.0%	1
Births to mothers who smoked during pregnancy	51	23.4%	12.1%	193.4%	68
Children on TennCare (Medicaid)	2,347	45.3%	44.7%	101.4%	25
Total TennCare (Medicaid) enrollees	4,079	20.5%	19.9%	102.8%	34
Births covered by TennCare (Medicaid)	165	75.7%	65.5%	115.6%	35
Children qualified for Medicaid/CHIP but uninsured	154	5.6%	6.5%	86.2%	27
Infant mortality (per 1,000 live births)	2	9.20	6.9	133.3%	72
Neonatal death (per 1,000 live births)	0	0.00	4.4	0.0%	1
Child deaths (per 100,000 children age 1 to 14)	0	0.00	20.5	0.0%	1
Teen violent deaths (per 100,000 children age 15 to 19)	0	0.00	55.7	0.0%	1
Adequate prenatal care	160	73.4%	58.8%	124.8%	4
Children under age six screened for lead poisoning	144	9.9%	17.1%	57.6%	87
Public school students measured as overweight/obese	NA	44.1%	39.3%	112.2%	59
Teens with STDs (per 1,000 children age 15 to 17)	5	6.6	19.0	34.8%	6
Medical doctors by county (per 100,000 residents)	7	35.1	229.1	15.3%	68
Dentists by county (per 100,000 residents)	3	15.0	50.1	30.1%	77
Family & Community 	Smith County		Tennessee Rate	County Rate as a percentage of State Rate	County Rank
	Number	Rate			
Reported child abuse cases	190	4.3%	4.7%	91.4%	17
Commitment to state custody (per 1,000 children)	61	12.3	4.1	303.7%	93
Remaining in state custody (per 1,000 children)	67	13.6	5.2	261.0%	91
Juvenile court referrals	0	0.0%	3.5%	0.0%	1
Recorded marriages (per 1,000 residents)	198	9.9	8.0	123.8%	4
Recorded divorces (per 1,000 residents)	77	3.9	3.5	111.4%	59

Smith County

At 11th, Smith County ranks near the top Tennessee counties in child well-being. The county's best rankings include that it had no child and teen deaths in 2018 and a high percentage of students grades 3rd to 8th rated proficient on TNReady math and reading tests. The county's biggest opportunities for improvement include a high rate of substantiated cases of child abuse and neglect and a relatively low high school graduation rate.

Additional strengths include low housing costs and a low percentage of children living in poverty (at 18.8 percent, Smith County's child poverty rate is still too high, but it is one of the lower than many counties in the state.) Smith county has a below-average rate of children without health insurance, babies born at a low birth weight, school suspensions and pregnancy among girls age 15-17.

Policy/Practice/Program Options to Improve Outcomes. Many of these policies have multiple models for delivery, including public-private partnership and non-profit leadership.

- Two-generation programs such as evidence-based home visiting have been shown to reduce instances of child abuse and neglect.
- Making high school students aware of the community college and technical school benefits available to them through Tennessee Promise can encourage on-time high school graduation.