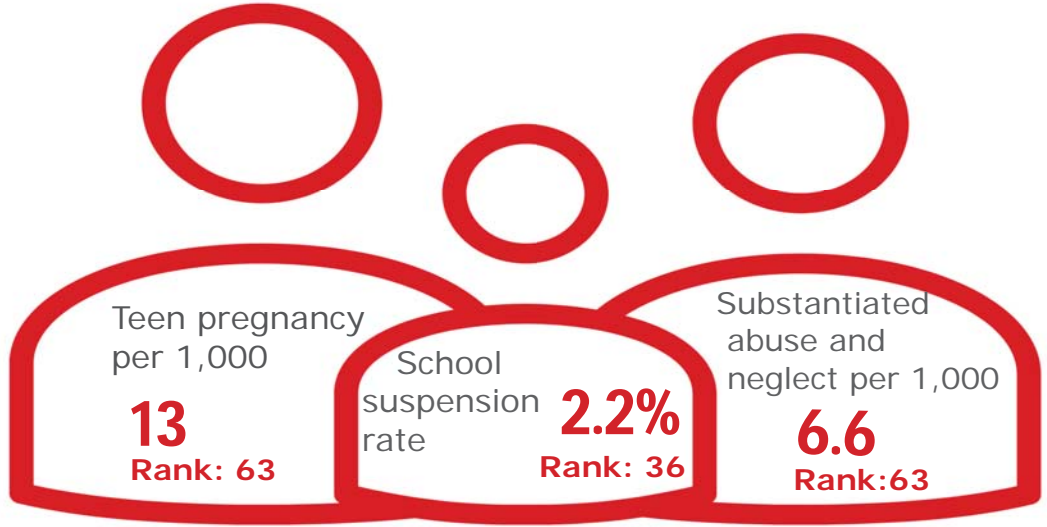


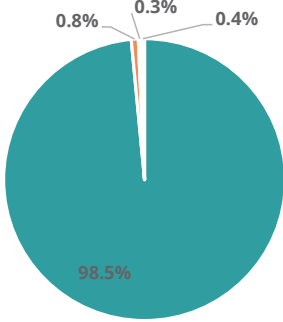
Family & Community

Rank: 53

Scott Rank: 69



Child Population by Race

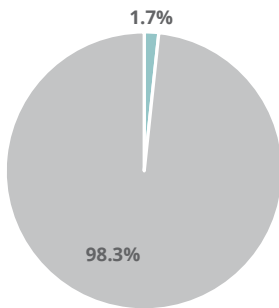


- White, Including Hispanic
- Black, Including Hispanic
- Native American/Alaskan
- Asian/Pacific Islander

Economic Well-Being

Rank: 75

Child Population by Hispanic Ethnicity

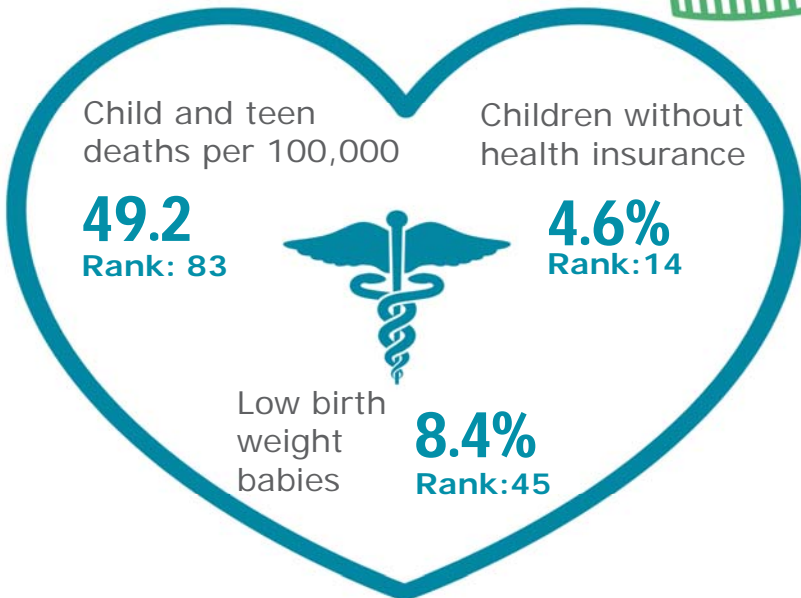


- Hispanic, All Races
- Non-Hispanic



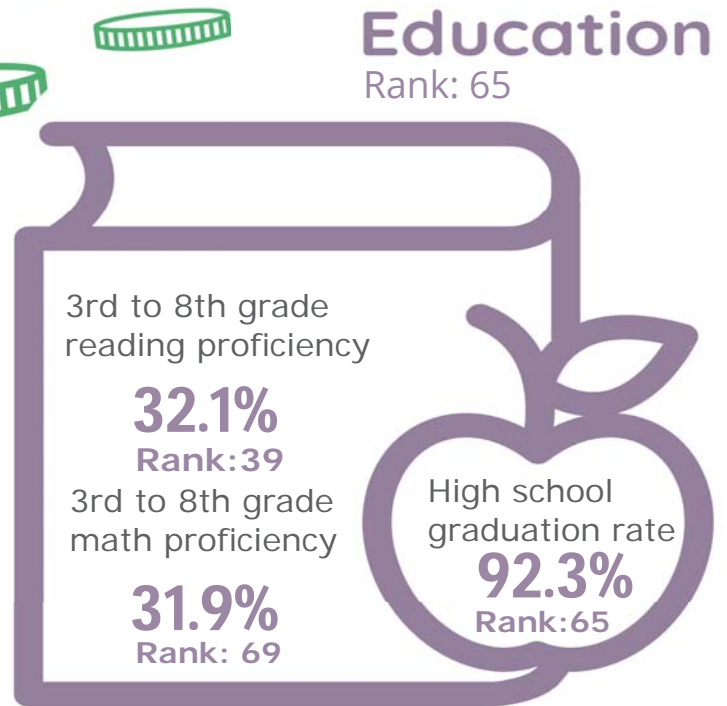
Health

Rank: 48








Education

Rank: 65



Scott County

Published 1/2021

Demographics 	Scott County		Tennessee Rate	County Rate as a percentage of State Rate	County Rank
	Number	Rate			
Total population (state comparison is number not rate)	22,039	NA	6,769,975	0.3%	63
Population under 18 years of age	5,273	23.9%	22.2%	107.8%	10
Economic Well-Being 	Scott County		Tennessee Rate	County Rate as a percentage of State Rate	County Rank
	Number	Rate			
Youth unemployment	69	22.5%	11.2%	200.9%	85
Per capita personal income (state is dollars not rate)	\$29,758	NA	\$46,900	63.4%	88
Median home sales price (state is dollars not rate)	\$116,500	NA	\$146,000	79.8%	68
Children receiving Families First grants (TANF)	193	3.7%	2.7%	135.1%	73
Children receiving SNAP	2,279	43.2%	28.2%	153.5%	90
Children under five receiving WIC	752	53.8%	30.6%	175.8%	84
Education 	Scott County		Tennessee Rate	County Rate as a percentage of State Rate	County Rank
	Number	Rate			
School age special education services	508	12.6%	12.3%	102.6%	39
TEIS participation (per 1,000 in age group)	19	22.43	27.9	80.4%	22
Cohort high school dropouts	4	1.5%	8.3%	17.5%	11
Event high school dropouts	7	0.6%	2.2%	25.8%	19
Economically disadvantaged students	3,547	88.9%	65.1%	136.5%	81
School expulsions (per 1,000 students)	10	2.4	2.0	120.0%	88
Chronic absenteeism	381	9.6%	13.3%	72.2%	23
Young adult college enrollment/completion rate	NA	62.9%	62.5%	100.6%	35
Health 	Scott County		Tennessee Rate	County Rate as a percentage of State Rate	County Rank
	Number	Rate			
Neonatal abstinence syndrome (per 1,000 live births)	7	28.11	11.5	244.8%	44
Births to mothers who smoked during pregnancy	47	18.9%	12.1%	156.2%	35
Children on TennCare (Medicaid)	3,890	63.8%	44.7%	142.6%	90
Total TennCare (Medicaid) enrollees	7,278	33.0%	19.9%	166.0%	94
Births covered by TennCare (Medicaid)	223	89.6%	65.5%	136.8%	91
Children qualified for Medicaid/CHIP but uninsured	180	4.7%	6.5%	72.3%	7
Infant mortality (per 1,000 live births)	2	8.00	6.9	115.9%	66
Neonatal death (per 1,000 live births)	2	8.00	4.4	181.8%	84
Child deaths (per 100,000 children age 1 to 14)	2	49.20	20.5	240.0%	83
Teen violent deaths (per 100,000 children age 15 to 19)	0	0.00	55.7	0.0%	1
Adequate prenatal care	167	67.1%	58.8%	114.1%	32
Children under age six screened for lead poisoning	132	7.9%	17.1%	46.1%	92
Public school students measured as overweight/obese	NA	46.8%	39.3%	119.1%	82
Teens with STDs (per 1,000 children age 15 to 17)	<5	*	19.0	#VALUE!	*
Medical doctors by county (per 100,000 residents)	8	36.3	229.1	15.8%	66
Dentists by county (per 100,000 residents)	6	27.2	50.1	54.4%	45
Family & Community 	Scott County		Tennessee Rate	County Rate as a percentage of State Rate	County Rank
	Number	Rate			
Reported child abuse cases	260	4.9%	4.7%	105.7%	36
Commitment to state custody (per 1,000 children)	35	6.0	4.1	147.4%	59
Remaining in state custody (per 1,000 children)	44	7.5	5.2	145.0%	63
Juvenile court referrals	148	2.8%	3.5%	79.4%	28
Recorded marriages (per 1,000 residents)	151	6.9	8.0	86.3%	33
Recorded divorces (per 1,000 residents)	123	5.6	3.5	160.0%	91

Scott County

At 69th, Scott County is in the bottom third of Tennessee counties in child well-being. The county's best rankings include a relatively low rate of children without health insurance and a low rate of school suspensions. The county's biggest opportunities for improvement include one of the lowest median household incomes in the state and a high rate of child and teen deaths.

An additional strength is below-average housing costs.

Additional challenges include a high rate of teen pregnancy among girls age 15-17 and high rates of substantiated cases of abuse or neglect. Additionally, more than one in four children are living in poverty.

Policy/Practice/Program Options to Improve Outcomes. Many of these policies have multiple models for delivery, including public-private partnership and non-profit leadership.

- With a low median household income and high rates of children living in poverty, improving outreach to those who may qualify to receive SNAP, WIC and TennCare benefits to be sure they are aware of these services can help ensure basic needs are met. Additionally, nutrition programs that provide food for school-age children to take home can contribute to food security. Expanding services through Family Resource Centers can also help reach these vulnerable populations.
- Child and teen deaths can be reduced with consistent enforcement of safety measures like proper car seat and seat belt use, bicycle helmet use and life preserver use around water. The fastest-growing cause of child and teen deaths in recent years has been homicide and suicide, often involving a firearm. Families who own firearms can reduce the risk to children and teens by following safe storage practices.
- Comprehensive sex education classes that include both encouragement of abstinence and information on birth control have been shown to reduce the number of teen pregnancies.
- Two-generation programs such as evidence-based home visiting have been shown to reduce instances of child abuse and neglect.